

THE JOSIAH K. LILLY  
COLLECTION

PART III

*Robert A. Siegel*  
**AUCTIONS**



317th SALE

# The Josiah K. Lilly Collection

PART III

Canal Zone, Cuba, D. W. Indies,  
Guam, Hawaii,  
Philippines, Puerto Rico  
and  
Confederate States  
of America

Sold by Order of the Trust Department  
of the Merchants National Bank & Trust Company  
of Indianapolis, Executors of the Estate

At Unreserved Sale by Public Auction

THURSDAY, APRIL 27th, 1967

2 P. M. and 8 P. M.

At the Waldorf Astoria Hotel

Park Avenue and 50th Street

*Robert A. Siegel*  
**AUCTIONS**

10 EAST 52nd STREET NEW YORK, N. Y. 10022

Tel: 212 PLaza 3-6422

# THE JOSIAH K. LILLY COLLECTION

## Part III

### U. S. Administration Issues, Hawaii and Confederate States of America

When one speaks of the "romance of philately", the images that are conjured up are of "Cape triangles", "Post Office Mauritius" and Hawaiian "Missionaries". And the third portion of the Lilly collection has a large share of this romance, not only in the group of Missionaries that are offered, but also in the Confederate States of America Postmasters' Provisionals. This group will possess a romantic appeal to the collectors who have an awareness of the rarity and to the appealing primitive character of the stamps of the Confederate period.

The Missionary stamps are complete, represented by attractive unused copies except for the 2c which is used. At the time of its acquisition by Mr. Lilly, no unused copy had appeared or was known. A cover bearing an uncanceled copy of the 13c "H. I. & U. S.", one of the finest covers known, will prove of interest to many.

The Confederate Postmasters' Provisionals contain such a great number of seldom seen stamps and covers, so many of them unique that the Confederate collectors will recognize them without difficulty as to their past travels and provenance. The great "gem" of Confederate Philately is, of course, the Livingston, Ala., 5c blue pair on cover. This is without question the most desirable item of appeal to the collectors of these issues, and was the subject of great competition when previously offered at sale. The pair of 10c "GOLIAD" provisionals, one of them with the "GOILAD" error, and the Unionville 5c pair on patriotic cover, the block of twelve of the 5c Nashville with three tete-beche pairs, and a pane of the 5c brown New Orleans in a complete sheet of 40 are others of considerable interest. And in the General issues, a strip of seven of the 10c "Frameline" is one of the largest known pieces.

The U. S. Administration issues are represented by an outstanding showing of the 1899 Special Printings, a much under-rated group of considerable rarity.

The opportunity to secure some of the choice items in this sale is not likely to come again for some years to come, and collectors will do well to view the long term aspects of their collecting fields.

ROBERT A. SIEGEL

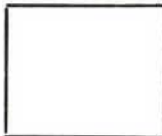


# 317th SALE

APRIL 27th, 1967

## BID SHEET

ROBERT A. SIEGEL AUCTION GALLERIES, Inc.  
10 East 52nd Street  
New York, N. Y. 10022  
Tel.: PLaza 3-6422 (Area Code 212)



Please purchase for me at your auction to be held April 27th, 1967, the lots named below, the prices annexed being my limit on each lot. I agree to remit for purchases in accordance with the **Conditions of Sale** and to return no lots later than three days after receipt.

REFERENCES PLEASE  
(if unknown to us)

SIGNED

.....  
.....  
.....

New York State residents kindly include  
County in address.

.....  
County

Lot	Bid	Lot	Bid	Lot	Bid

### VALUATIONS

Upon request, estimate of value furnished on any lots in this auction.



## CONDITIONS OF SALE

1. The terms of sale are strictly cash to the highest bidder. All buyers are expected to pay for lots within three days of receipt, unless special arrangements have been made prior to the sale.
2. All bids are per lot as numbered in the catalogue and not per piece, unless otherwise announced by the auctioneer at the time of sale.
3. Any lot the description of which is incorrect is returnable only within three days of receipt. All disputed lots must be returned intact as received. Lots containing five or more stamps are not returnable at any time. No lots may be returned by purchasers who have had the opportunity to examine them before the sale.
4. Successful mail bidders, unless they are known to us or supply acceptable references, will be notified of the amount of the lots secured for them, and are expected to send payment in full before the lots are forwarded.
5. If the purchase price has not been paid within the time limit, or lots taken up within seven days from date of sale, they may be resold and any losses arising from such sale charged to the defaulter.
6. All stamps are sold as genuine, except where sold "As Is". Claims for any lot proving otherwise, must be made within two weeks from date of sale.
7. The right is reserved to group two or more lots, also withdraw any lot or lots from the sale, or to act on behalf of the seller.
8. Until paid for in full all lots remain the property of Robert A. Siegel.
9. No commission is charged for buying at our sales, but all forwarding charges will be added to the purchase price.
10. Upon written application lots may be sent for examination prior to the auction to persons known to us or who supply acceptable references, conditional upon being mailed back by registered mail, adequately insured, within 24 hours of receipt. The applicant is completely responsible for all lots sent for examination, and for the insurance of same against mishap, from the time of receipt until they are actually received back, and is to pay all expenses of postage and insurance.
11. The placing of a bid shall constitute acceptance of the foregoing conditions of sale.

ROBERT A. SIEGEL

ANDREW LEVITT, Licensed Auctioneers

---

In sending bids, always state the highest price you are prepared to pay for the lot. Your limit will not be used as a starting bid unless absolutely necessary.

### DESCRIPTIONS

Superb or Extremely Fine—the finest condition for noteworthy, outstanding copies.

Very Fine (VF)—means that there is a slight deviation from the above.

Fine (F)—means that the perforations do not touch the design on issues after 1890, but in some cases may just touch in earlier issues; if used, fairly lightly cancelled.

Very Good (VG)—means that the appearance is generally fine but that the perforations cut the design slightly.

Good (G)—means average off-centering; or fairly attractive with slight defects

Original gum (OG) is not to be expected on 19th Century stamps unless so stated.

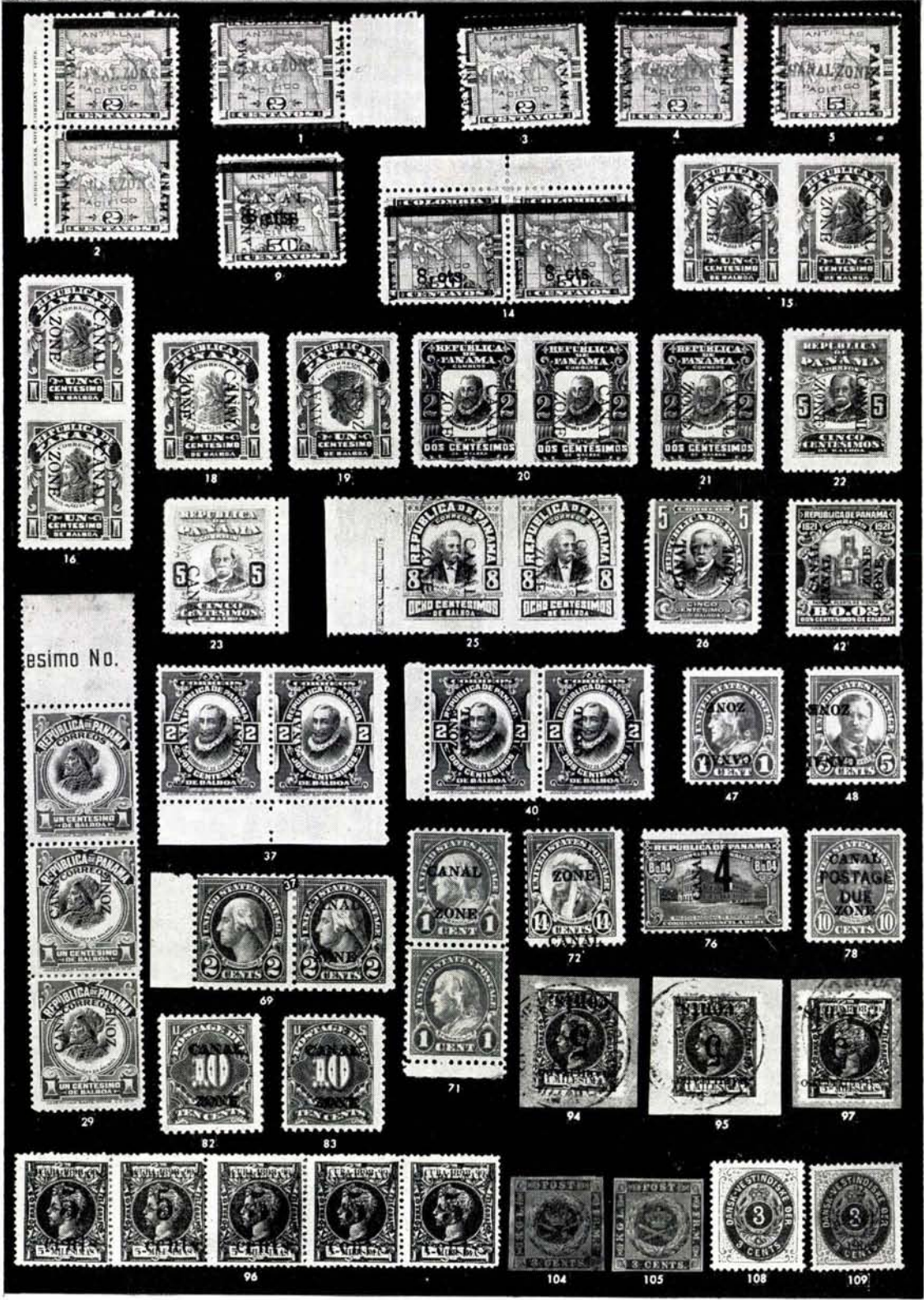
Mint—have never been hinged.

Scott 1967 Specialized United States Catalogue is used for cataloging our lots

of United States and Scott's Standard Catalogue, 1967 for others.

WE SOLICIT FINE MATERIAL FOR FUTURE SALES
---





asimo No.

96

104

105

108

109

# FIRST SESSION

THURSDAY, APRIL 27th, 1967 — 2 P. M.

## CANAL ZONE

### 1904 ISSUE

- |     |   |         |        |
|-----|---|---------|--------|
| 1 ★ | 2c Rose (1). Part o. g., Very Fine .....  | (Photo) | 45.00  |
| 2 ★ | 2c Rose (1). Imprint Vert. Pair, one with "Panama" reading up, other down, one blunted perf. otherwise F.-V.F., Ex Tows .....           | (Photo) | 90.00+ |
| 3 ★ | 2c Rose Inverted Overprint (1a). Very Fine, H. Colman guarantee on back, Ex Tows .....  | (Photo) | 85.00  |
| 4 ★ | 2c Rose Inverted Overprint, "Panama" reading up and down (1a var.). Str. edge at bot., Fine, H. Colman guarantee on back, Ex Tows ..... | (Photo) | 85.00+ |
| 5 ★ | 5c Blue Double Overprint (2b). Very Fine .....  | (Photo) | 80.00  |
| 6 ★ | 5c Blue Diagonal Overprint (2d). Small thin, V. G. appearance .....   |         | 35.00  |
| 7 ★ | 10c Yellow (3). Small thin speck, V. F. appearance, signed E. Perry .....   |         | 30.00  |

### 1904-1906 ISSUES

- |      |  |         |        |
|------|--|---------|--------|
| 8 ★田 | 1c Green "Canal" in Antique (9a). Block, U. L. Stamp the Error, V. F.                                      |         | 12.50+ |
| 9 ★  | 8c on 50c Bistre Brown Double Overprint (14f). No gum and tiny corner perf. crease, V. F. appearance ..... | (Photo) | 60.00  |

10



11

12

- |      |   |         |        |
|------|---|---------|--------|
| 10 ★ | 8c on 50c Bistre Brown (15). Fine, Ex Tows .....  | (Photo) | 200.00 |
| 11 ★ | 8c on 50c Bistre Brown (15). "Panama" 15 mm long, V. F., signed .....                                       | (Photo) | 225.00 |
| 12 ★ | 8c on 50c Bistre Brown (15). Vert. Margin Pair, one with "Panama" 15 mm long, Fine-Very Fine, Ex Tows ..... | (Photo) | 425.00 |



- 13 ★ 8c on 50c Bistre Brown (19, 19a, 19b). Two Blocks, one has one stamp with "Canal" in antique type, other Block one stamp with "Zone" in Antique, Fine-Very Fine, Ex Tows ..... 48.00
- 14 ★ 8c on 50c Bistre Brown "Canal Zone" Omitted (19d var.). Horiz. pair, left stamp "Panama" reading up and down, Very Fine, Ex Tows (Photo) —

#### 1906-1907 ISSUES

- 15 ★ 1c Green & Black, Horiz. Pair, Imperforate Between (22a). V. F. (Photo) 35.00
- 16 ★ 1c Green & Black Vert. Pair Imperforate Between (22b). Tiny corner crease in one, otherwise V. F., Ex-Tows ..... (Photo) 50.00
- 17 ★ 1c Green & Black Inverted, Double Overprints (22d, 22e). Small flaws, Very Fine appearance ..... 75.00
- 18 ★ 1c Green & Black, Double Overprint, one Inverted (22f). Minute thin speck, Very Fine appearance, Ex-Tows ..... (Photo) 70.00
- 19 ★ 1c Green & Black Inverted Center, Overprint Reading Up (22g). Small tear, Very Fine appearance ..... (Photo) 150.00
- 20 ★ 2c Red & Black Horiz. Pair, Imperforate Between (23a). Very Fine, H. Colman guarantee on back ..... (Photo) 80.00
- 21 ★ 2c Red & Black Double Overprint (23c). Very Fine, signed Sloane (Photo) 35.00
- 22 ★ 5c Ultramarine & Black Double Overprint (24c). Very Fine ..... (Photo) 45.00
- 23 ★ 5c Ultramarine & Black "Canal" Only (24d). No gum, otherwise V. F. (Photo) 125.00
- 24 ★ 5c Ultramarine & Black "Canal" Only (24d). Block, U. L. Stamp the Error, Very Fine ..... (Photo) 125.00
- 25 ★ 8c Purple & Black Horiz. Pair Imperf. Between and at Left Margin (25a). With Part Imprint, centered to top, V. G., H. Colman guarantee on back, Ex-Tows ..... (Photo) 45.00

#### 1909-1920 ISSUES

- 26 ★ 5c Deep Blue & Black Double Overprint (33a). Centered to top, V. G. (Photo) 70.00
- 27 ★ 5c Deep Blue & Black Double Overprint (33a). Block, V. G.-Fine (Photo) 280.00
- 28 ★ 10c on 13c Gray, "10cts" Inverted (36a). Couple blunted perms., otherwise Very Fine ..... 30.00
- 29 ★ 1c Green & Black Without Overprint (38a). Vert. Strip of 3, T. Stamp the Error, Fine ..... (Photo) 65.00
- 30 ★ 2c Vermilion & Black Booklet Pane (39c). Very Fine, signed Sloane ..... 30.00
- 31 ★ 2c Vermilion & Black Inverted Center (39e). Very Fine ..... 20.00
- 32 ★ 1c Green & Black Double Overprint (46b). V. F., Ex-Tows ..... 20.00
- 33 ★ 1c Green Inverted Overprint (52a). T. Margin Strip of 4, with Plate No., Fine ..... (Photo) 100.00+





24



27



33



48



54



61



64



39



52



60



63



59



81

34	★	1c Green & Black Booklet Pane of 6 (52b). Two stamps small thin spots, otherwise Very Good .....	40.00
35	★	2c Vermilion & Black Inverted Overprint (53a). Corner Plate No. Block of 4, and Margin Strip of 5 with Inscription, V. G.—Fine .....	54.00+

#### 1920-1924 ISSUES

36	★	2c Orange Vermilion Double Overprint (56a). Very Fine .....	20.00
37	★	2c Orange Vermilion & Black "Canal" Only (56 var.). Pair, R. Stamp the Error, Fine, Unlisted, Ex-Tows .....	(Photo) —
38	★	2c Orange Vermilion & Black Double Overprint, one Inverted (56b). V. G. ....	27.50
39	★	2c Orange Vermilion & Black Double Overprint, One Inverted (56b). Block, two stamps couple blunted perfs., B. Pair Very Fine .....	(Photo) 110.00
40	★	2c Orange Vermilion & Black, "Zone" Double (56f). Horiz. Pair, L. Stamp the Error, Fine .....	(Photo) 35.00
41	★	50c-1b Views (58-59). Very Fine set .....	46.00
42	★	2c Carmine Double Overprint (61b). Centered slightly to T., Very Fine, Ex-Tows .....	(Photo) 60.00
43	★	5c Blue Inverted Overprint (62a). Block, F.-V. F., Ex-Tows .....	30.00
44	★	5c Blue Small Black Overprint (62c). Corner Block with Plate No., Fine—Very Fine .....	34.00
45	★	10c Violet Inverted Overprint (63a). Corner Block with Plate No., Fine, Ex-Tows .....	40.00
46	★	5c-1b Arms Not Issued, Fine—Very Fine set .....	52.50

#### 1924-1927 ISSUES

47	★	1c Deep Green Inverted Overprint (71a). Fine, Ex-Tows .....	(Photo) 70.00
48	★	1c Deep Green, "Canal" Only "Zone-Canal" (71c, 71d). Block with Plate No., incl. two of each, Very Fine, Ex-Tows .....	(Photo) 180.00
49	★	5c-\$1.00 Overprints Ty. A (74-81). F.-V. F. ....	52.60
50	★	50c Lilac (80). Top Plate No. Block of 6, F.-V. F. ....	47.50
51	★	2c-\$1.00 Overprints (84-88, 90-95). F.-V. F. ....	50.90
52	★	2c Carmine "Canal" Only, "Zone Canal" (84a, 84b). Block with T. Plate No., incl. two of each, Very Fine, Ex-Tows .....	(Photo) 240.00+
53	★	3c Violet "Zone-Zone" (85a). Block, one stamp the Error, V. G. ....	90.00
54	★	3c Violet "Zone-Zone" (85a). Block of 9, Middle Stamp the Error, Fine, Ex-Tows .....	(Photo) 90.00
55	★	5c Dark Blue (86). Five Pairs, each with Overprint on one stamp partially missing through folding of sheet before overprinting, Very Attractive lot .....	—
56	★	5c Dark Blue "Canal" Inverted (86b). Pos. 7, str. edge at top, Pair, L. Stamp the Error, Very Fine .....	37.50
57	★	5c Dark Blue "Canal" Inverted (86b). Pos. 7, str. edge at top, Pair, L. Stamp the Error, Very Fine .....	37.50



58	★	5c Dark Blue Inverted Overprint (86c). Very Fine .....	(Photo)	45.00
59	★	5c Dark Blue Inverted Overprint (86c). Block, V. G. ....	(Photo)	180.00
60	★	5c Dark Blue "Zone-Canal" (86e). Block, Fine .....	(Photo)	110.00
61	★	5c Dark Blue "Zone-Canal", "Zone" Only (86e, 86f). L. R. Corner Block incl. two of each, Fine, Ex-Tows .....	(Photo)	205.00
62	★	5c Dark Blue (86, 86e, 86h). Block of 8 str. edge T. & L with overprint shifted, producing one "Canal" only and one "Zone-Canal", Fine Block, Ex-Tows .....		116.10+
63	★	5c Dark Blue Vert. Pair, one without overprint other inverted (86g). Block, forming two Pairs, F.-V. F., Ex-Tows .....	(Photo)	300.00
64	★	5c Dark Blue (86, 86e). L. Half Arrow Block of 6, shifted overprint, producing 3 copies "Zone-Canal", F.-V. F., Ex-Tows .....	(Photo)	82.50+
65	★	17c Black "Zone Canal", "Zone" Only (91a, 91c). Block with B. Plate No., Very Fine, Ex-Tows .....	(Photo)	105.00
66	★	17c Black "Canal" Only, "Zone Canal" (91b, 91c). Block, incl. two of each, Very Good-Fine, Ex-Tows .....		105.00
67	★	17c Black "Zone-Canal" (91c). Block, overprint mostly within perfs., Very Fine .....	(Photo)	70.00
68	★	50c Lilac (94). Left Plate No. Block of 6, Fine-Very Fine .....	(Photo)	225.00
69	★	2c Carmine, Pair one Without Overprint (97a). Fine, Ex-Tows .....	(Photo)	150.00
70	★	2c Carmine Booklet Panes (97b, 101a). Fine-Very Fine .....		36.50
71	★	7c Green, Pair one Without Overprint (100a). V. F., Ex-Tows .....	(Photo)	150.00
72	★	14c Dark Blue "Zone-Canal" (116a). V. G., signed Sloane, Ex-Tows .....	(Photo)	100.00
73	★	1c-\$1.00 Anniversary (120-135, C15-C20). Fine-Very Fine set .....		68.70
74	★	1904-46, Balance of Collection, 716 unused stamps, mounted in Godden De Luxe Album, incl. Wide Range of Overprinted Issues with Types, Varieties, Blocks, Multiples, Booklet Panes, Airposts, Dues, 14 Entires, Unlisted items, nearly all F.-V. F. ....		622.23+

#### POSTAGE DUES

75	★	10c Rose Carmine Postage Due (J3). Fine .....		32.50
76	★	4c on 4c Olive Brown Postage Due "Zone" Omitted (J11a). Centered slightly to left, Fine, Ex-Tows .....	(Photo)	70.00
77	★	10c Deep Claret Postage Due (J14). Block, 3 mm Spacing, V. G. ....		92.50
78	★	10c Orange Postage Due Double Overprint (J17a). V. F. ....	(Photo)	60.00
79	★	10c Orange Postage Due "POSTAG" variety (J17b). Pair, str. edge at bot., L. Stamp the Error, V. G. ....		38.00
80	★	1c Carmine Rose Postage Due "Zone-Zone" (J18a). Block of 6, incl. the Error, Fine .....	(Photo)	100.00
81	★	2c Carmine Rose "Zone-Zone" (J19a). Half Arrow Block of 12, Middle Stamp the Error, Fine .....	(Photo)	252.75+

82 ★	10c Carmine Rose Postage Due, Double Overprint (J20c). V. F. (Photo)	60.00
83 ★	10c Carmine Rose Postage Due, Double Overprint (J20c). Fine (Photo)	60.00
84 ★	Blue Post Office Seal (OX1). Cpl. sheet of 8, faint crease in three, pin-point thin in one, others F.-V. F.	32.00+

#### POSTAL STATIONERY

85	✉ 2c Entires, one Head & Overprint Only, other Frame Only (U2b, U2c). Unused, Very Fine	40.00
86	✉ 1c Green Entire (U3). Unused, faintly toned and light wrinkle, otherwise Very Fine	65.00
87	✉ 2c Red Entire (U4). Unused, American Legion Corner Card, V. F.	30.00
88	✉ 2c Carmine Entire (U5). Unused, Very Fine	37.50
89	✉ 2c Carmine Entire (U5). Unused, Very Fine	37.50
90	✉ 1c-2c Postal Cards (UX1-UX4). Unused, V. F.	33.00
91	✉ 1c Green Postal Card (UX6). Unused, Very Fine	40.00
92	✉ 1c Green Postal Card (UX6). Unused, light corner crease, otherwise V. F.	40.00

## CUBA

#### 1898-1900 ISSUES

93 ★	1898, 3c on 3m Orange Brown (180-181). Horiz. Pair, showing the two stamps se-tenant, Fine, o. g.	21.50
94	1898, 5c on 1m Orange Brown Inverted Overprint (182a). Tied on small piece, V. G., signed Bartels (Photo)	200.00
95	1898, 5c on 1m Orange Brown Inverted Overprint (183a). Tied on small piece, Very Fine (Photo)	250.00
96 ★	1899, 5c on 5m Orange Brown (188, four, 189). Horiz. Strip of five, o. g., one stamp nibbed perf., others V. G.-Fine, signed Colson (Photo)	115.00+
97	1899, 5c on 5m Orange Brown Inverted Overprint (189a). Tied on small piece, centered to R. (Photo)	100.00
98 ★	1899, 1c-5c Paris Exhibition Special Printing (221 var-225 var.). Horiz. Pairs, o. g., F.-V. F., Rare	—

*LOTS ON VIEW FROM APRIL 20th*

*OFFICES OPEN EVERY SATURDAY*





68



120



76



65



67



80



121



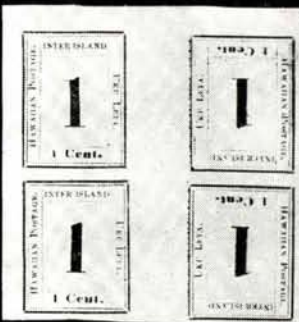
187



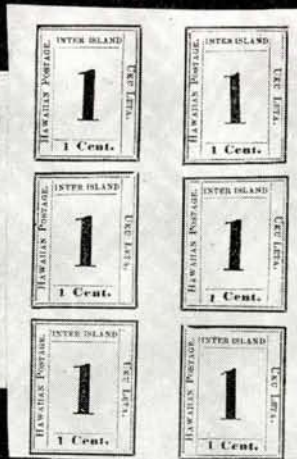
165



142



135



162



151



172



173



174



- 99 ★ 1899, 10c on 10c Brown Ty. II (226A). Vert. Imprint Pair, o. g., microscopic thin speck in one, other Very Fine, Rare Pair, with P. F. Certificate (Photo) 1000.00
- 100 P 1899, 1c-10c Pictorials, Spec. Delivery Small Die Proofs (227P-231P, E3P). Very Fine set ..... 80.00
- 101 P 1899, 10c Orange Spec. Delivery Large Die Proof India Die Sunk on Card (E3P). Very Fine ..... 60.00
- 102 ★ 1899, 1c-5c Cut Squares (U1-U11, U13-U18). Very Fine ..... 44.35
- 103 ★ 1898-1900, Balance of Collection, 14 unused stamps, 10 Cut Squares, 13 Entires, nearly all F.-V. F. .... 82.15

## DANISH WEST INDIES

- 104 ★ 1855, 3c Dark Carmine, Brown Gum (1). Margins all around, o. g., V. F. (Photo) 50.00
- 105 ★ 1855, 3c Dark Carmine Yellow Gum (1a). Margins all around, V. F. (Photo) 40.00
- 106 ★ 1866-72, 3c Rose, Carmine (2-3). Fine-Very Fine, o. g. .... 25.00
- 107 ★ 1873, 4c Dull Blue (4). Fresh, o. g., Fine ..... 28.50
- 108 ★ 1898, 3c Blue & Lake Normal Frame (17a). Very Fine ..... (Photo) 55.00
- 109 ★ 1902, 2c on 3c Blue & Carmine "Straight Tail" (23a). V. F., signed (Photo) 100.00
- 110 ★ 1902, 8c on 10c Blue & Brown Inverted Frame (28b). V. F. .... (Photo) 50.00
- 111 ★ 1873-1917, Balance of Collection, 65 unused stamps, incl. Numerals, Inverted Frame, Varieties, Pictorials, Dues, nearly all F.-V. F. .... 99.10

## GUAM

- 112 ★ 1899, 1c-15c Overprints (1-8, 10). Fresh, o. g., F.-V. F. .... 46.35
- 113 ★ 1899-1930, 1c-\$1.00 Overprints, Guard Mail (Betw. 1-M11). 22 unused stamps, mostly o. g., few small faults, otherwise V. G.-V. F. .... 127.80
- 114 ★ 1899, 1c-\$1.00 Paris Exposition Special Printing (1 var.-8 var., 10 var.-12 var.). Horiz. Pairs, o. g., F.-V. F. set, Rare ..... (Photo Ex) —



115	★	田	1899, 10c Brown Ty. I (8). Block, o. g., Very Fine .....	20.00
116	★		1899, 10c Brown Ty. II (9). Large part o. g., Fresh and Fine, with P. F. Certificate .....	(Photo) 450.00
117	★		1899, 10c Brown Ty. II (9). Fresh, o. g., tiny thin spot, centered to R. Fine appearance, with P. F. Certificate .....	(Photo) 450.00
118	★	田	1899, 15c Olive Green (10). Block, o. g., Very Fine .....	40.00
119	★		1899, 50c Red Orange (11a). Very Fine, o. g. ....	25.00
120	★	田	1899, 50c Orange (11). B. Imprint Plate No. Block of 6, part o. g., V. F. (Photo) .....	185.00
121	★	田	1899, \$1.00 Black Ty. I (12). Bot. Imprint Plate No. Block of 6, o. g., F. (Photo) .....	325.00
122	★		1899, \$1.00 Black Ty. II (13). Large part o. g., Fresh, light crease, Fine appearance .....	(Photo) 350.00
123	★		1899, 10c Blue Spec. Delivery Paris Exposition Special Printing (E1 var.). Very Fine, o. g., Rare .....	(Photo) —
124	★		1930, 2c-4c Guard Mail (M1-M2). V. G.-V. F. ....	70.00
125	★		1930, 1c-2c Guard Mail (M3-M4). Very Fine set .....	35.00

## HAWAII

### MISSIONARIES, 1851-1852



126			2c Blue Missionary (1). Margins all around, Bold Oval Grid & San Francisco pmk., expertly repaired, Very Fine appearance, A Very Handsome copy of this Great Rarity, with P. F. Certificate .....	(Photo) 22,500.00
-----	--	--	---	-------------------



127

128

129

- 127 ★ **5c Blue Missionary (2).** Crocker Ty. I, margins all around, Lovely Color minute tear in R. margin, invisibly repaired tear at L.R., Very Fine appearance, One of the most attractive unused copies known, with Friedl Certificate ..... (Photo) 10,000.00
- 128 ★ **5c Blue Missionary (2).** Crocker Ty. II, margins all around, neatly repaired, Very Fine appearance, with Friedl Certificate ..... (Photo) 10,000.00
- 129 ★ **13c Blue Missionary (3).** Ample to Enormous Margins, Rich Pretty Color, Beautifully restored, Trivial Toning, Extremely Fine appearance, with P. F. Certificate ..... (Photo) 5,000.00



- 130 ☒ **13c Blue Missionary (3).** Margins except microscopic nick in frame line at L., scissor cut at L., Deep Beautiful Color, Uncancelled, on fresh Buff cover to N. Y. state with clear Red "Honolulu U. S. Postage Paid", "Paid" over "8" in circle, one of the Finest Known Covers bearing this Rarity, Ex Caspary ..... (Photo) 5,500.00+



- 131 ★ **13c Blue Missionary (4).** Large Margins, Rich Lovely Color, Expertly repaired, Extremely Fine appearance, with P. F. Certificate ..... (Photo) 12,000.00
- 132 **H. M. Whitney** (Postmaster when Missionary stamps were issued & later Hawaiian Postmaster General) Autograph on 1"x3" Piece, Very Fine E. II

### KING KAMEHAMEHA III

#### 1853-1868 ISSUES

- 133 ★ **5c Blue on Thick White (5).** Ample to Huge Margins, Wonderful Color, o. g., Extremely Fine, Ex Caspary ..... (Photo) 200.00
- 134 ★ **13c Dark Red (6).** Margins all around, o. g., Very Fine ..... (Photo) 80.00



- 135 ★ **13c Dark Red (6).** Horiz. Block of Eight Pos. 13-20 Brilliant Color, o. g., faint corner crease in margin, far from design, Extremely Fine, A Rare & Gorgeous Block ..... (Photo) 2,000.00+

*LOTS ON VIEW FROM APRIL 20th*  
*OFFICES OPEN EVERY SATURDAY*



- 136 ★ **13c Dark Red (6).** Complete Plate Reconstruction, sixteen have margins all around, other four touched in places, few minor faults, large majority Fine-Very Fine, an Attractive & Rare Study ..... (Photo) 1,600.00



- 137 ✉ **5c on 13c Dark Red (7).** Five Copies Large Margins except one touched at B., uncanceled, on Legal Size Cover to Mass. **in combination with U. S. 10c Green Ty. II, III, 12c Black (14, 15, 17).** Horiz. Pair & Single of No. 15, clear to huge margins except pair touched at R., tied by San Francisco pmks, Red Honolulu pmk., "52" in ms. cover bit irregular at R., one 5c bit rubbed in margin & 10c Ty. III single has margin crease, otherwise Very Fine, A Unique and Very Handsome Quintuple Rate Cover, Ex Caspary ..... (Photo) E. XV
- 138 ★ **5c Blue on Thin White (8).** Large Margins, o. g., tiny thin speck, Very Fine appearance ..... (Photo) 95.00
- 139 ★ **5c Blue on Thin White (8).** Complete Plate Reconstruction, incl. Horiz. Strip of Four and Three Horiz. Pairs, two stamps of the strip have Red Honolulu pmk., balance unused, most have margins all around, few small faults, Balance Fine-Very Fine ..... (Photo) 1,930.00+
- 140 ★ **5c Blue on Bluish (9).** Huge Margins, Extremely Fine ..... (Photo) 37.50
- 141 ★ **5c Blue on Bluish (9).** Huge Margins, fresh, o. g., trace of horiz. crease, Extremely Fine appearance ..... (Photo) 37.50
- 142 ★ **5c Blue on Bluish (9).** Block Pos. 11, 12, 15, 16. Large Margins except tiny nick at B. just touches frame, fresh, o. g., negligible creases & two tiny thins, otherwise Extremely Fine, A Very Handsome Block, Ex Caspary ..... (Photo) 300.00
- 143 ★ **5c Blue on Bluish (9).** Complete Plate Reconstruction incl. Two Horiz. Pairs, all but one unused, margins all around except two touched at one point, few small faults, balance F.-V. F., Scarce & Most Attractive ..... 760.00
- 144 ★ **2c Red, 5c Blue (9, 10, 10 var., 27, 29).** Small faults, F.-V. F. appearance ..... 115.00
- 145 ★ **5c Blue Reissue, Double Print (10 var.).** Margins except just touched at L. L., small faults, Very Fine appearance, unlisted in Scott ..... (Photo) —
- 146 ★ **5c Blue Reissue (10).** Complete Pane of 20, one has tear, crease in 5 others, balance Very Fine, Ex Caspary ..... 179.00
- 147 ★ **2c Red, 5c Blue Reissues, Reprint (10, 29, 51).** Fresh, o. g., Very Fine ..... 31.00
- 148 ★ **13c Dull Rose Reissue (11).** Large Margins, o. g., Extremely Fine (Photo) 75.00



114EX



110

116

117

122

123



133

134

138

140

141

145



148

149

150

152

153

189



157

158

159

160

161



178

190 EX

196

198



- 149 ★ **13c Dull Red Reissue (11).** Margins all around, o. g., faint crease in L. margin, Very Fine appearance ..... **(Photo)** 75.00

#### NUMERALS, 1859-1865 ISSUES

- 150 ★ **1c Light Blue on Bluish White (12).** Pos. 2, Enormous margins, fresh, o. g., Extremely Fine, A Magnificent Gem ..... **(Photo)** 375.00
- 151 ★ **1c Light Blue on Bluish White (12).** Cpl. Reconstruction of the Second Setting, five have margins all around, others barely touch at places except one bit in at R. & B., most have minor faults, Fine-Very Fine appearance, A Very Rare Study ..... **(Photo)** 3,750.00
- 152 ★ **2c Light Blue on Bluish White (13).** Pos. 10, Dropped Period after Cents, Huge Margins, Extremely Fine, **only recorded copy** of this variety, Ex Tows, Caspary ..... **(Photo)** 300.00+
- 153 ★ **2c Black on Greenish Blue (14).** Pos. 3, Huge Margins, Extremely Fine, a wonderful Copy, Ex Caspary ..... **(Photo)** 375.00
- 154 ★ **1c Black on Grayish (15).** Large margins, small faults, Fine appearance 42.50
- 155 ★田 **1c Black on Grayish (15).** Tete Beche Block of 4, Pos. 8+4, 10+2, Huge Margins, full o. g., faint crease at B., 3 have minor thins, Extremely Fine appearance, Ex Caspary, Unlisted in Scott ..... **(Photo)** —
- 156 ★ **1c Black on Grayish (15).** Complete **Pane of Ten**, Huge Margins, faint horiz. crease in Pos. 6-7, tiny thins in 3 stamps, otherwise Extremely Fine, Rare & Handsome, Ex Caspary ..... **(Photo)** 585.00+
- 157 ★ **2c Black on Grayish (16).** Large Margins, minor faults, V.F. appearance **(Photo)** 125.00
- 158 ★ **2c Black on Grayish (16).** Huge Margins, faint bend, barest trace of thin specks, Extremely Fine appearance, Ex Caspary ..... **(Photo)** 125.00
- 159 ★ **2c Dark Blue on Bluish (17).** Pos. 9, Clear to Gigantic Margins, barest trace of thin speck, otherwise Extremely Fine, one of the finest known copies of this Rarity, Ex Caspary ..... **(Photo)** 500.00
- 160 ★ **2c Black on Blue Gray (18).** Pos. 9, Huge Margins, Extremely Fine, Ex Caspary ..... **(Photo)** 150.00
- 161 ★ **1c Black (19).** Huge margins, small thins, Very Fine appearance **(Photo)** 60.00
- 162 ★田 **1c Black (19)** Block of Six, Pos. 1-6, Huge Margins, Extremely Fine, Ex Caspary ..... **(Photo)** 570.00+
- 163 ★ **2c Black (20).** Huge Margins, tear, Fine appearance ..... 70.00
- 164 ★ **5c Blue on Blue (21).** Margins all around, faint crease and tiny thin specks, Very Fine appearance ..... 65.00
- 165 ★ **5c Blue on Blue (21).** Horiz. Pair, Pos. 8+7, Huge Margins, o. g., faint creases, tiny thin specks, Extremely Fine appearance, Ex Caspary **(Photo)** 130.00+
- 166 ★ **5c Blue on Blue (22).** Huge Margins, o. g., trivial faint vertical creases, Extremely Fine appearance ..... 45.00
- 167 ★ **5c Blue on Blue (21).** Cpl. **Pane of Ten**, Huge Margins to barely touched, o. g., faint vertical crease in R. Row, couple tiny age spots, otherwise F.-V.F., Ex Caspary ..... **(Photo)** 590.00+





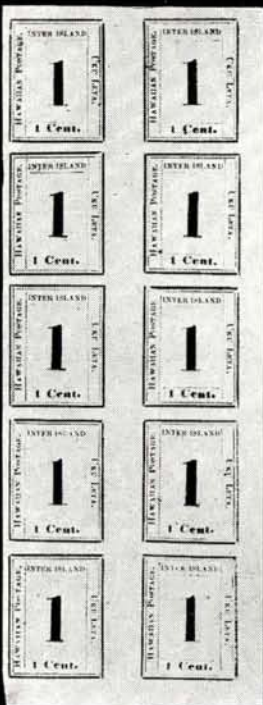
136



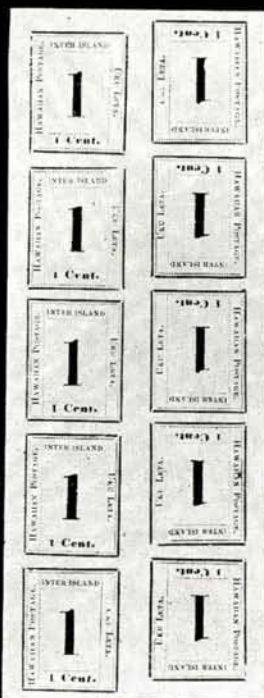
139



167



162



168



170

168	★	1c Black on Laid (23b). Tete-Beche Pane of Ten, fresh, o.g., tiny thin in T. margin, clear of design, otherwise Extremely Fine ..... (Photo)	875.00+
169	★	1c, 2c Black on Laid (23, 24). Fresh, Fine-Very Fine .....	50.00
170	★	2c Black on Laid (24). Straddle Block of Ten, Fresh, dealer handstamp at B, faint horiz. crease between 3rd & 4th rows, otherwise Extremely Fine Ex Caspary ..... (Photo)	320.00+
171	★	1c, 2c Dark Blue (25, 26). Margins to barely touched, first has pinpoint marginal thin speck, otherwise Fine .....	72.50

#### KING KAMEHAMEHA IV

1861-1869

172	★	2c Pale Rose (28). Block, clear to enormous margins except barely touched at one point, fresh, o.g., scissor cuts between stamps at sides, one touching design, vertical crease between stamps, otherwise Fine-Very Fine, Rare in this Shade, Ex Caspary ..... (Photo)	350.00
173	★	2c Carmine Rose (28a). Horiz. Block of Ten, Rich Color, Large Margins except L. R. stamp partly touched at B., fresh, o.g., faint thin speck in one, another has negligible corner bend, barely visible tiny toned spots, otherwise Extremely Fine, one of only three Known Blocks of Ten, Ex Caspary ..... (Photo)	400.00
174	★	2c Red Reissue (29). L. L. Sheet Corner Block, Huge Margins, o.g., faint bend in top pair, not visible in fluid, Extremely Fine, Ex Caspary (Photo)	70.00

#### PORTRAIT ISSUES 1864-1899

175	★	1c-\$1.00 1864-99 Issues (30-47, 49, 52-52c, 74-82). Extra Shades of 33, 38, 43, Majority o.g., nearly all Fine-Very Fine .....	128.65
176	★	1c Green Double Overprint (55B). Fresh, o.g., Fine .....	35.00
177	★	1c-\$1.00 1893 Overprints (53-73). Cpl. Set Except 61B, 66C, almost all o.g., Fine-Very Fine .....	111.70
178	★	6c Green, Double Overprint (60A). Fine, part o.g. .... (Photo)	65.00
179	★	2c-25c Officials (01-06). Cpl. Set, o.g., Fine-Very Fine .....	30.00
180	☒	4c Red Entire, Blue Inside (U7). Unused, Very Fine .....	40.00
181	☒	5c Blue Entire, Blue Inside (U8). Unused, Very Fine .....	47.50
182	☒	10c Black Entire, Blue Inside (U9). Unused, Very Fine .....	60.00
183	☒	5c Blue Entire, Double Overprint (U12a). Unused, Very Fine .....	30.00
184	☒	Hawaiian POSTAL STATIONERY Nine Entires, seven cut squares, seventeen Postal Cards, Mostly diff. Very Fine lot .....	50.30

## PHILIPPINES

1899-1901 ISSUES

185	★	50c Orange (212). B. Imprint Plate No. Block of 6, o.g., slightly reinforced and couple of tiny stains, otherwise Fine ..... (Photo)	300.00
-----	---	--	--------



- 186 ★ 1c-15c Paris Exhibition Special Printing (213 var-214 var., 216 var-218 var). Horiz. Pairs, o. g., Very Fine, Extremely Rare ..... (Photo Ex) —
- 187 ★ 6c Lake St. Louis Exposition Special Printing (221 var). Horiz. Pair, Very Fine, Very Rare ..... (Photo) —
- 188 ★ \$2.00 Dark Blue (224). Negligible perf. tips thin, Fine appearance ..... 55.00
- 189 ★ \$5.00 Dark Green (225). Perfs. just touch at bot., Very Good, o. g. (Photo) 120.00

1903-1904 ISSUE

- 190 ★ 1c-\$5.00 Insular Affairs Special Printing (226 var, 228 var-240 var). Fine-Very Fine set, Rare, signed E. K. .... (Photo Ex) —



- 191 ★田 1c-\$5.00 Insular Affairs Special Printing (226 var, 228 var-240 var). Blocks, Fine-Very Fine set, Exceedingly Rare in Blocks, signed W. H. B. (Photo Ex) E. XV
- 192 ★田 50c Orange (236). Block, Very Fine ..... 57.50
- 193 ★田 \$1.00 Black (237). Block, Fine-Very Fine ..... (Photo) 200.00
- 194 ★ \$2.00 Dark Blue (238). Few blunted perf. tips, otherwise Very Fine ..... 80.00
- 195 ★田 \$2.00 Dark Blue (238). Block, Very Fine ..... (Photo) 350.00
- 196 ★ \$5.00 Dark Green (239). Small thin spots, V. F. appearance ..... (Photo) 110.00
- 197 ★田 \$5.00 Dark Green (239). Block, one stamp pinpoint thin speck, others V. F. (Photo) 485.00

1906-1926 ISSUES

- 198 ★ 10p Dark Green (254). Fine ..... (Photo) 40.00
- 199 ★ 4p Deep Blue (273). Very Fine ..... (Photo) 95.00
- 200 ★ 10p Deep Green (274). Very Fine ..... (Photo) 42.50
- 201 ★ 2c-1p Portraits, Arms (276, 278, 278a, 279-284). Very Fine ..... 81.55
- 202 ★ 2c-6c Booklet Panes of 6 (277a, 291b, 292c). One stamp light gum crease, others Fine-Very Fine ..... 46.50

203	★	4c-1p Portraits, Arms (286-289D). Fine-Very Fine .....	94.00
204	★	2c Green Booklet Pane of 6 (285a). Fine, listed but unpriced in Scott ....	—
205	★	2c-10p Portraits, Arms (290-300, 302-304). Fine-Very Fine.....	51.75
206	★	2c-10p Imperforates (340-353). Very Fine set .....	105.07
207	★	2c-10c Imperforates (340-353). Horiz. Pair, V. F. set .....	(Photo Ex) 210.14

#### 1932-1940 ISSUES

208	★	2c-32c Views (354-360). Blocks, incl. 3 with Plate No., V. F. set .....	73.35
209	★	18c Orange Falls (357). Block with T. Plate No., Very Fine .....	50.00
210	★	2c-5p Pictorials (383-396). Blocks, incl. several with Plate Nos., 5p light gum creases, otherwise F.-V. F. set .....	80.77
211	★	2c-5p Commonwealth Issues (411-424, 433-446). F.-V. F. sets .....	58.98

#### 1944 VICTORY HANDSTAMPS

212	★	2c Rose Booklet Pane Victory Handstamp (463a). Stuck to glassine interleaving, small stains in margin, otherwise V. G.-Fine, with P. F. Certificate (Photo) .....	900.00
213	★	2c-20c Victory Handstamps (464-465, 472, 473-474, 477, 481). Few small faults in some, otherwise V. G.-V. F., with P. F. Certificates .....	263.00
214	★	6c Dark Brown Victory Handstamp (466). Str. edge at L. & B., partly struck on piece of paper, light crease, Fine appearance, with P. F. Certificate .....	(Photo) 500.00
215	★	6c Yellow Green Victory Handstamp (467). Well centered, tiny corner crease, V. F. appearance, with P. F. Certificate .....	(Photo) 75.00
216	★	6c Dark Brown Victory Handstamp (468). Nibbed perf., otherwise Fine, with P. F. Certificate .....	(Photo) 300.00
217	★	6c Carmine Victory Handstamp (469). Fine, with P. F. Certificate (Photo) .....	60.00
218	★	6c Orange Victory Handstamp (470). Very Fine, with P. F. Certificate (Photo) .....	250.00
219	★	12c Ultramarine Victory Handstamp (475). Light tropical toning, otherwise Fine, with P. F. Certificate .....	(Photo) 100.00
220	★	16c Dark Blue Victory Handstamp (478). Nibbed perf., V. G., with P. F. Certificate .....	(Photo) 375.00
221	★	16c Dark Blue Victory Handstamp (479). Str. edge at left, tiny bits of tissue paper on back, otherwise V. F., with P. F. Certificate .....	(Photo) 200.00
222	★	16c Dark Blue Victory Handstamp (480). Tissue paper on back, faint gum soak, otherwise Fine, with P. F. Certificate .....	(Photo) 100.00
223	★	30c Orange Red Victory Handstamp (482). Very Fine, with P. F. Certificate .....	(Photo) 100.00
224	★	30c Orange Red Victory Handstamp (483). Fine, with P. F. Certificate (Photo) .....	150.00





193



195



197



186 EX



883



207 EX

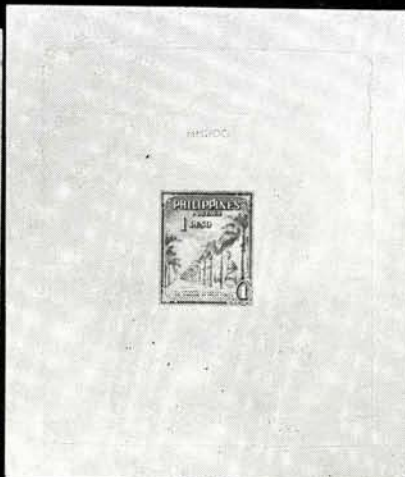
241



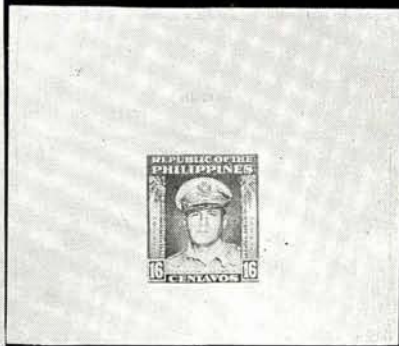
244



212



225 EX



229



226 EX



228 EX

1947-1948 DIE PROOFS

225 P	4c-1p Views Large Die Proofs India Die Sunk on Card (504P-510P). V. F. set, Scarce ..... (Photo Ex)	—
226 P	4c-1p Views Large Die Trial Color Proofs India Die Sunk on card (504TC-508TC, 510TC). Very Fine, Scarce ..... (Photo Ex)	—
227 P	4c-16c Mc Arthur Large Die Proof India Die Sunk on Card (519P-521P) Tiny stain or nick in extreme margins, otherwise V. F. set, Scarce .....	—
228 E	6c-80c Mc Arthur, Airpost Large Die Essays India Die Sunk on Card, without Numeral of Value (520E-521E, C66E), V. F., Scarce (Photo Ex)	—
229 P	16c Bright Ultramarine Large Die Proof India Die Sunk on Card (521P). Bit trimmed at bot., Very Fine, Scarce ..... (Photo)	—

AIRPOSTS

230 ★	2c-30c Madrid-Manila Flight (C1-C6, C9-C12). Three values have pinpoint tropical stains on few perf. tips, others F.-V. F. ....	72.00
-------	---	-------



231 ★	16c Light Olive Green Madrid-Manila Flight (C7). V. F., Rare (Photo)	400.00
232 ★	2p Violet Brown Madrid-Manila Flight (C13). Barest trace of toning on few perf. tips, otherwise Very Fine ..... (Photo)	120.00
233 ★	4p Dark Blue Madrid-Manila Flight (C14). Very Fine ..... (Photo)	225.00
234 ★	4p Dark Blue Madrid-Manila Flight (C14). Faint toning specks on back only, Very Fine appearance ..... (Photo)	225.00
235 ★	10p Deep Green Madrid-Manila Flight (C15). Fine ..... (Photo)	375.00
236 ★	26c Blue Green Madrid-Manila Flight Wmk. (C16). Nibbed perf., otherwise Very Fine, Rare ..... (Photo)	500.00
237 ★	1p Pale Violet Madrid-Manila Flight (C17). Very Fine ..... (Photo)	50.00
238 ★	1p Pale Violet Madrid-Manila Flight (C17). Very Fine ..... (Photo)	50.00





199



200



214



215



216



217



219



218



220



221



222



223



237



224



238



240



242



243



246



254



253



255



263



264

239	★	2c-1p LOF, Gronau, Rein Flights (C18-C45). #C45 thin spot, otherwise Fine-Very Fine sets .....	54.95
240	★	4c Rose Carmine Airpost Victory Handstamp (C68). Stuck on paper, tiny gum soak in couple of perfs., otherwise V.F., with P. F. Certificate (Photo)	400.00

### SPECIAL DELIVERIES, DUES, OFFICIALS

251	★	10c Dark Blue Spec. Delivery (E1). B. Imprint Plate No. Block of 6, few pinpoint thin specks in one stamp, otherwise Very Fine .....	(Photo) 165.00
242	★	10c Ultramarine Spec. Delivery Special Printing (E2A). Fine .....	(Photo) 275.00
243	★	10c Ultramarine Spec. Delivery Special Printing (E2A). Small tear, Fine appearance, with P. F. Certificate .....	(Photo) 275.00
244	★	10c Ultramarine Special Delivery Special Printing (E2A). Block, Fine, signed, Extremely Rare Block .....	(Photo) 1,100.00+
245	★	20c Ultramarine, Violet Spec. Delivery (E3-E6). Fine-Very Fine .....	34.15
246	★	20c Dull Violet Spec. Delivery Victory Handstamp (E8). Tissue paper on back, otherwise Very Fine, with P. F. Certificate .....	(Photo) 85.00
247	★	20c Blue Violet Spec. Delivery Victory Handstamp (E9). Str. edge at R., large thin spot, Fine appearance, with P. F. Certificate .....	75.00
248	P	20c Rose Lilac Spec. Delivery Large Die Proof India Die Sunk on Card (E11P). Very Fine, Scarce .....	—
249	★	1c-10c Postage Due Paris Exhibition Special Printing (J1 var.-J4 var.). Horiz. Pairs, o. g., F.-V. F., Extremely Rare .....	—
250	★	1c-50c Postage Due Insular Affairs Special Printing (J1 var.-J7 var.). V. G.-V. F. set, Rare, signed E. K. ....	—
251	★	1c-50c Postage Due Insular Affairs Special Printing (J1 var.-J7 var.). Blocks, one 10c stamp pulled perf., otherwise V. G.-V. F. set, Exceedingly Rare, signed W. H. B. ....	—
252	★	4c-20c Postage Dues Victory Handstamps (J16-J22). Mostly o. g., 10c blunted perf., 16c faint thin spot, otherwise Fine set, with P. F. Certificates .....	250.00
253	★	2c Rose Official Victory Handstamp (O38). Fine, with P. F. Certificate (Photo)	150.00
254	★	10c Rose Carmine Victory Handstamp (O41). V. F., with P. F. Certificate (Photo)	200.00
255	★	10c Rose Carmine Victory Handstamp (O41). Fine, with P. F. Certificate (Photo)	200.00
256	★	Post Office Seals (OX1-OX5, OX7, OX9-OX12). #OX2 faint trace of toning, others Fine-Very Fine .....	65.35
257	★	1c-5c Cut Squares (U1-U13, U15-U27). Very Fine .....	70.55
258	☒	2c Carmine, 4c Olive Green Entires Victory Handstamp (U43, U45). Unused, Very Fine .....	47.00
259	☒	4c Carmine Entire Victory Handstamp (U44). Unused, Very Fine .....	150.00
260	☒	2c Green on Buff Postal Card Victory Handstamp (UX20). Unused, Fine	30.00



261	✉	<b>2c Green, Red Post Cards Victory Handstamp (UX20-UX22).</b> Unused, Very Fine .....	180.00
262	★	<b>1899-1946, Balance of Collection,</b> 432 unused stamps in Godden De Luxe Album incl. #212, ovpts. with values to \$1.00 #223, Booklet panes, incl. #240a, Portraits, Arms to 4p, Pictorials, Commems., Victory Handstamps, many with Certificates, Victory ovpts. with values to 20p #496, Airpost, Dues, Spec. Delivery, Entires, Jap. Occupation, a number have small faults, balance Fine-Very Fine .....	849.88

## PUERTO RICO

263	★	<b>1898, 5c Violet on Yellowish Ponce Issue (200).</b> Clear to Large Margins, o. g., tiny thin speck, V. F. appearance, signed .....	<b>(Photo)</b> 400.00
264	★	<b>1898, 5c Black Coamo Issue (201).</b> Pos. 10, Margins except barely touched at U. R. corner, minute corner crease, Fine appearance .....	<b>(Photo)</b> 85.00
265	★	<b>1899, 5c-10c Paris Exhibition Special Printing (212 var.-214 var.).</b> Plate No. Singles, o. g., V. G.-V. F., Extremely Rare, Ex-De Coppet .....	—
266	★	<b>1899, 1c-10c Postage Due Paris Exhibition Special Printing (J1 var.-J3 var.).</b> T. Plate No. Singles, o. g., F.-V. F. set, Extremely Rare, Ex-De Coppet .....	—
267	✉	<b>1899, 2c Carmine on Amber Entire (U6).</b> Addressed but unused, faint stain, otherwise Very Fine, signed Sloane .....	100.00
268	★	<b>1938-40, 1c-\$1.00 Private Airposts (Sanabria 1-15).</b> Cpl. Sheets of 6 and 10, Fine-Very Fine sets.....	Sanabria 88.00
269	★	<b>1899-1900, Balance of Collection,</b> 10 unused stamps, 14 Cut Squares, 2 Entires, nearly all Fine-Very Fine .....	57.25

END OF FIRST SESSION

*LOTS ON VIEW FROM APRIL 20th*

*OFFICES OPEN EVERY SATURDAY*









## SECOND SESSION

THURSDAY, APRIL 27th, 1967 — 8 P. M.

### CONFEDERATE STATES

#### POSTMASTERS' PROVISIONALS

- 270  **Abingdon, Va. 5c Black on Orange Provisional Entire (2XU3).** Clear Abingdon pmk., used Clinton, Tenn., Fresh, V. F., Very Scarce **(Photo)** 85.00
- 271  **Albany, Ga. 5c Greenish Blue on Amber (3XU2).** Clear Albany Oct. 22, 1861 pmk., used to Ft. Gaines, Fresh, Very Fine, Ex Caspary ..... **(Photo)** 85.00
- 272  **Anderson C. H. S. C. Provisional Entire on Oatmeal (4XU3 var.).** Ty. II, unused no value stated, Extremely Fine ..... Dietz 60.00
- 273 ★ **Athens, Ga. 5c Dull Purple (5X1).** Ty. II, Huge Margins, Magnificent Color, part o. g., Extremely Fine, A Gem Ex Caspary ..... **(Photo)** 400.00
- 274  **Athens, Ga. 5c Dull Purple (5X1a).** Vertical Tete Beche Pair Enormous Margins, Grid Cancels, not tied on cover to Vice Pres. Stephens at Richmond, clear Athens pmk., pinhole between stamps & microscopic margin tear far from design, still Very Fine, cover docketed on flap, A Rare & Handsome Cover, Ex Ferrari, Caspary ..... **(Photo)** 1,250.00
- 275 **Athens, Ga. 5c Red Ty. II (5X2).** Huge Margins, grid cancel, not tied, on left half of fresh Amber Cover with clear "Athens, Ga. Paid" pmk. and Blue & Embossed Illustrated Corner Card of U. of Ga., Gem, Extremely Fine, Ex Caspary ..... **(Photo)** 850.00+
- 276  **Autaugaville, Ala. 5c Black on Gray Green Provisional Entire (10XU1).** Clear Autaugaville, pmk., used to Marion, Very Fine, Very Rare, Ex Caspary ..... **(Photo)** 1,000.00
- 277 **Autaugaville, Ala. 5c Black on White Provisional (10XU3).** Top 1½" x 5½" strip top portion of cover with clear Autaugaville pmk., Very Fine, Ex Ferrari, cat. as Entire \$1,000.00 ..... **(Photo)** E. X
- 278  **Autaugaville, Ala. 5c Black on Amber Provisional Entire (10XU4).** Clear Autaugaville pmk., used to Lowndesboro, Fresh, Extremely Fine, Rare, Ex Caspary ..... **(Photo)** 325.00
- 279 ★ **Baton Rouge, La. 2c Green (11X1).** Margins to barely in, full o. g., long sealed tear, creases, Fine appearance, Rare, Ex Caspary ..... **(Photo)** 1,750.00



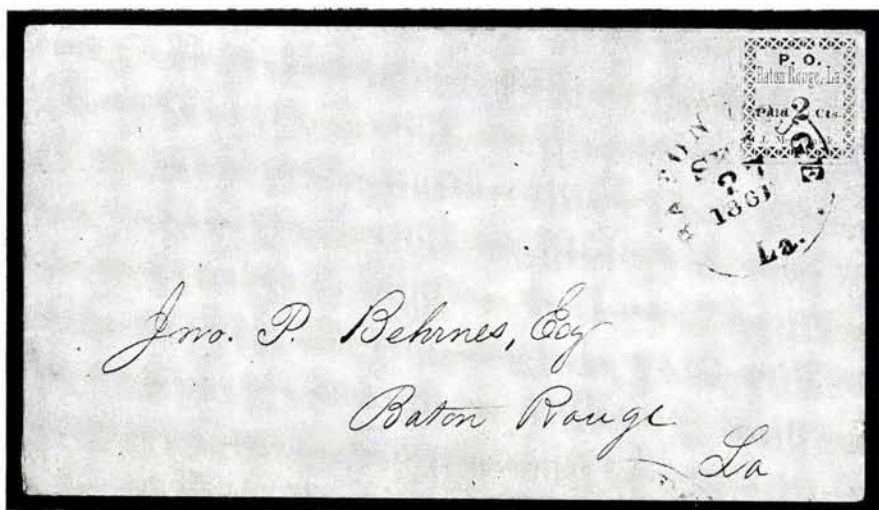
273



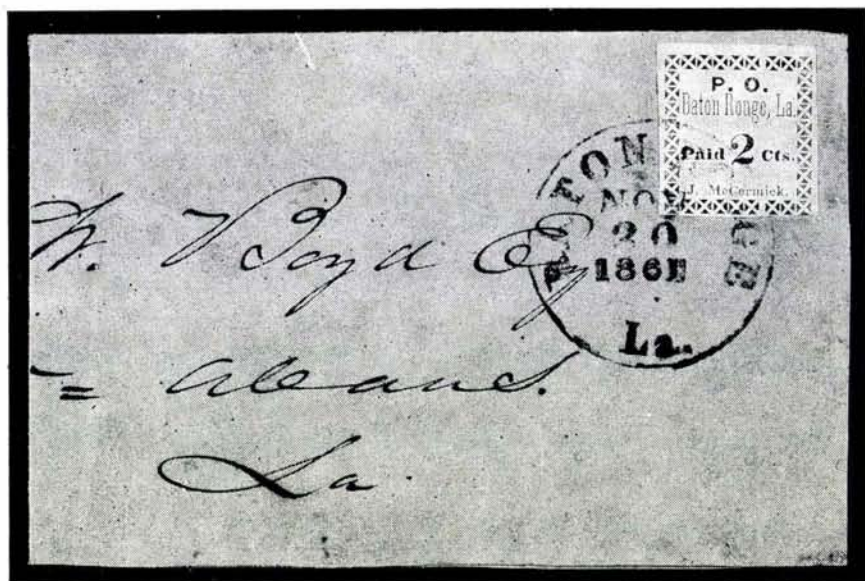
275



274



280  **Baton Rouge, La. 2c Green (11X1).** Margins all around, tied by clear Baton Rouge Sep 27, 1861 pmk. on Fresh Local Cover, A Rare and Handsome Gem, Extremely Fine ..... (Photo) 2,250.00



281  **Baton Rouge, La. 2c Green "Mc Cermick" (11X1A).** Large margins except barely touched in L. R. Corner, tied by clear Baton Rouge Nov. 30, 1861 pmk. on oblong Wrapper, folded at center, **Only Known** Example on Cover, A Very Handsome Rarity ..... (Photo) 3,250.00





277



285

Mrs. C. Sand, Watson.



284

Mrs. Wm. P. Duncan  
Liberty  
Texas

by 10



Mrs. P. M. C.



276

Ellen H. Walther

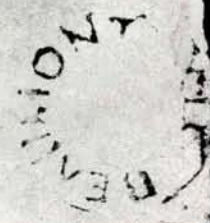


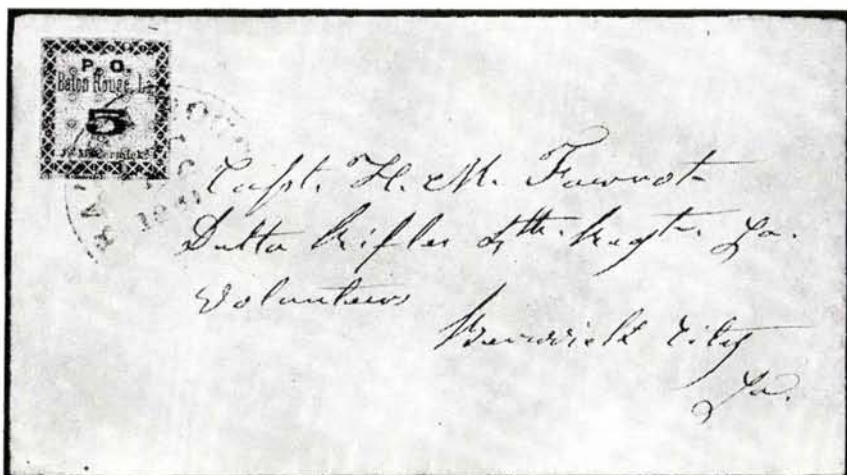
286

Mrs. Wm. P. Duncan  
Liberty  
Texas



278





- 282  **Baton Rouge, La. 5c Green & Carmine, "Mc Cermick" (11X2a).** Huge Margins, Vivid Color, tied by clear Baton Rouge pmk. on fresh cover to Berwick City no flap, Extremely Fine Gem, Ex Caspary ..... **(Photo)** 1,200.00
- 283 ★ **Baton Rouge, La. 5c Green & Carmine (11X3).** Margins to slightly in, Vivid Colors, o. g., small sealed corner tear, Fine appearance, Rare unused, Ex Caspary ..... **(Photo)** 500.00
- 284  **Beaumont, Texas 10c Black on Yellow (12X1).** Large Margins, Minor Gum Soak, Uncancelled, on Fresh Turned Cover to Liberty with Liberty pmk. & matching Paid in circle inside, Very Fine, Rare ..... **(Photo)** 2,000.00
- 285  **Beaumont, Texas 10c Black on Pink (12X2).** Huge Margins, Uncancelled, on cover to Galveston from which it has been torn & neatly replaced, cover has other small faults, stamp Extremely Fine, Ex Caspary **(Photo)** 1,650.00
- 286  **Beaumont, Texas 10c Black on Yellow (12X3).** Huge Margins, uncancelled, minor gum soak on cover to Liberty with clear Beaumont pmk., minor cover fault at L.L., otherwise Very Fine, **Only Known Example**, Ex Caspary ..... **(Photo)** 3,500.00

*LOTS ON VIEW FROM APRIL 20th*

*OFFICES OPEN EVERY SATURDAY*





279



283



304



313



306



310



288



323



330



339



348



345



352



355



360



371



378



372



388



389



394



398



399



400

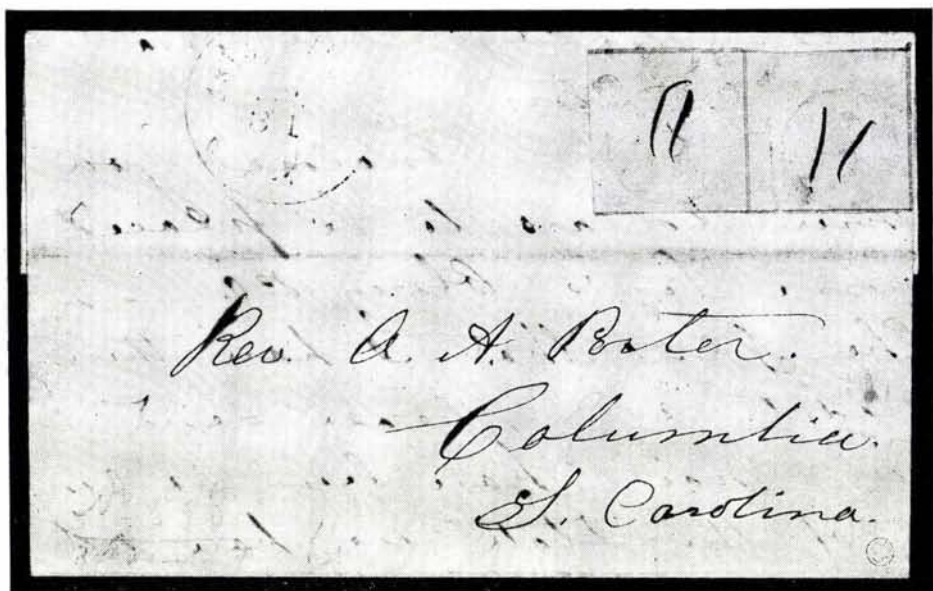


382

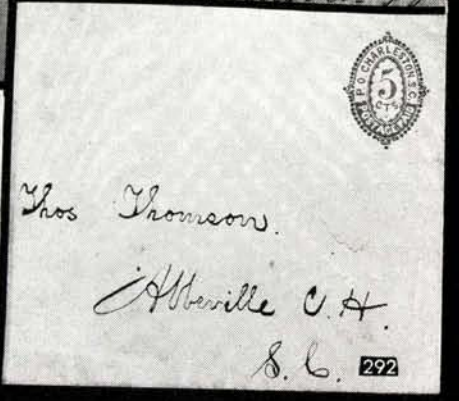
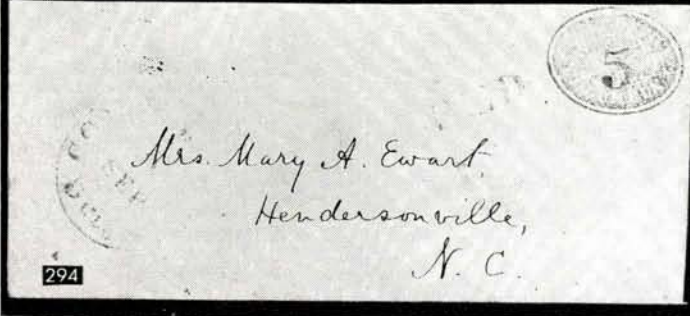
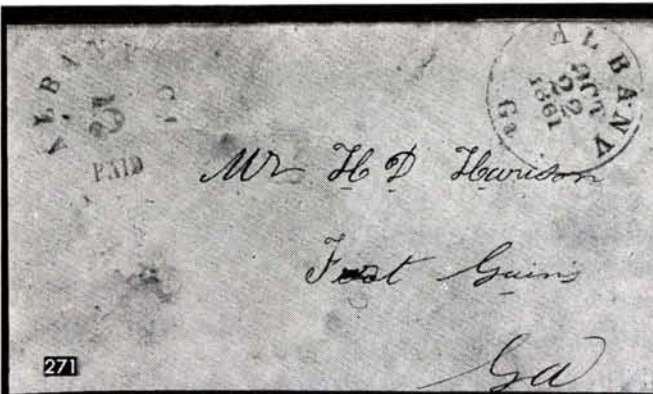


402

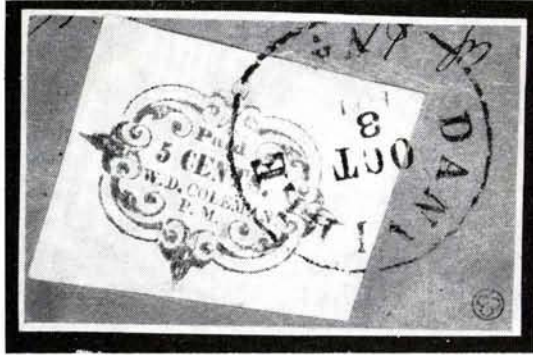




- 287 ☒ **Bridgeville, Ala. 5c Black & Red on White (13X1)**. Horiz. Pair showing nearly full Red lines except at L., vertical crease before using on R. stamp, ms. cancels, Bridgeville pmk., on neat folded letter to S. C., **unique**, A Rare & Desirable Cover, Ex Ferrari, Caspary ..... **(Photo)** 5,000.00
- 288 ★ **Charleston, S. C. 5c Blue (16X1)**. Huge Margins except barely in at U. L., Fresh, o. g., Very Fine for this, Ex Caspary ..... **(Photo)** 100.00
- 289 ☒ **Charleston, S. C. 5c Blue on Amber Provisional Entire (16XU2)**. Bold Charleston Aug. 20, 1861 pmk., used to Laurens, Very Fine ..... **(Photo)** 150.00
- 290 ☒ **Charleston, S. C. 5c Blue on Orange Provisional Entire (16XU3)**. Bold Oct. 8, 1861 Charleston pmk., used to Abbeville, C H, Fresh, Extremely Fine, Ex Seybold, Caspary ..... **(Photo)** 150.00
- 291 ☒ **Charleston, S. C. 5c Blue on Buff Provisional Entire (16XU4)**. Clear Charleston Oct. 27, 1861 pmk., used to Aiken, S. C., Fresh, Extremely Fine, Ex Caspary ..... **(Photo)** 150.00
- 292 ☒ **Charleston, S. C. 5c Blue on Blue Provisional Entire (16XU5)**. No pmk., addressed to Abbeville C. H., minor tear at L. L., otherwise V. F. **(Photo)** 150.00
- 293 ☒ **Columbia, S. C. 5c Blue on White Provisional Entire (18XU1)**. Clear Columbia 5c pmk., used to Bivingsville, Fresh, Extremely Fine, Ex Caspary **(Photo)** 125.00
- 294 ☒ **Columbia, S. C. 5c Blue on White Provisional Entire (18XU8)**. Light Columbia 5c pmk., matching "Paid", used to Hendersonville, N. C., Handsome, Fresh & Very Fine, A Very Handsome Cover, Ex Caspary **(Photo)** 150.00
- 295 ☒ **Columbus, Ga. 5c Blue on Orange Provisional Entire (19XU2)**. Clear Columbus pmk., used to Griffin, Ga., V. F., Rare, Ex Caspary ..... **(Photo)** 135.00
- 296 ☒ **Columbus, Ga. Paid 10**, handstamp on fresh greenish cover to Albany, Ga., Very Fine ..... **E. III**
- 297 ☒ **Dalton, Ga. 10c Black on Buff Provisional Entire (20XU7)**. Clear Jul. 17. 1862 Dalton pmk., used to Mc Kinley, Ala., Fresh, Very Fine, Very Scarce **(Photo)** 110.00







- 298 **Danville, Va. 5c Red (21X1).** Cut Square, Huge Margins, tied on small piece by clear Danville pmk., A Gorgeous Example of this Rarity, Extremely Fine, Ex Ferrari, Caspary ..... (Photo) 1,900.00
- 299  **Danville, Va. 5c Red (21X1).** Cut Square, tied by clear Danville pmk. on Orange Cover to Richmond, cover chipped in U.R. corner and bit reduced at L., Fine stamp, Rare, Ex Caspary ..... (Photo) 2,750.00
- 300  **Danville, Va. 5c Black on Dk. Buff Provisional Entire (21XU3).** Clear Danville pmk., used to Richmond Gorgeous Fresh Example of this most Handsome of Provisional Entires, Extremely Fine ..... (Photo) 450.00
- 301  **Emory, Va. 5c Blue on Dull Blue (24X1 var.).** Tied by ms. cancel on Orange Entire to Wythville, Va., clear ms. "Emory, Va. June 24, 1861", cover bit nicked in U.L. corner, otherwise Very Fine, Only Known Example with "Paid" below "5", Letter Enclosed, Ex Caspary (Photo) 1,100.00+



- 302  **Franklin, N. C. 5c Blue on Buff Provisional Entire (25XU1).** Clear Franklin pmk., used to Waynesville, faint toned spots, no flap, otherwise Extremely Fine, Unique, Ex Ferrari, Caspary ..... (Photo) 3,250.00
- 303 ★ **Fredericksburg, Va. 5c Blue on Bluish (26X1).** Complete Sheet of Twenty, Huge Margins, Fresh, o. g., 3 have tiny holes, faint creases & minor margin breaks, balance Very Fine, most Attractive & Very Rare Showpiece, only one or two other sheets known unpriced in multiples, Cat. as singles (Photo) 700.00+



- 304 ★ **Fredericksburg, Va. 10c Red Brown on Bluish (26X2a).** Huge Margins, o. g., faint crease, negligible margin break, Extremely Fine appearance (Photo) 150.00



- 305  **Goliad, Texas 5c Black on Rose (29X3).** Clear to Enormous Margins, clear "Paid" cancel, not tied, on Cover Front Only to Austin with "Goliad" pmk., fresh, tiny fault in top of stamp, Very Fine appearance, no full cover known, this is the item from which Scott's "On Cover" listing was made Ex Ferrari, Caspary ..... (Photo) 2,250.00
- 306 **Goliad, Texas 10c Black (29X4).** Margins to barely touched, faults, Fine appearance, A Very Rare Stamp, Ex Caspary ..... (Photo) 1,250.00



- 307  **Goliad, Tex. 10c Black on Rose (29X5).** Margins to Barely touched, vertical crease before using, uncancelled on faintly toned Multicolor Patriotic to "Santa Gertrudas, Kings Ranch Texas" showing Soldier, Tents, 10 Star Flag, also U. S. Patriotic with similar design, A Famous & most Attractive Confederate Rarity, Ex Ferrari, Hind, Caspary ..... (Photo) 2,750.00+



- 308 **Goi lad, Goliad, Texas 5c Black on Gray (29X6, 29X6a).** Horiz. Pair, L. stamp the Error, Huge Margins to Barely touched, light town pmk., faint crease between stamps Very Fine, A Unique Gem, Ex Ferrari, Caspary (Photo) 6,000.00



- 309  **"Goi lad", Texas 10c Black on Gray Error (29X7a).** Enormous margins to barely touched, tied by "Paid" on neat folded Letter to Corpus Christie, "O. B." in ms., Very Fine, only one other Example Known, Ex Caspary (Photo) 2,500.00
- 310 **Goliad, Tex. 10c on Dark Blue (29X9).** Margins to barely touched, ms. cancel, tiny faults, Fine appearance, with P. F. Certificate ..... (Photo) 1,500.00

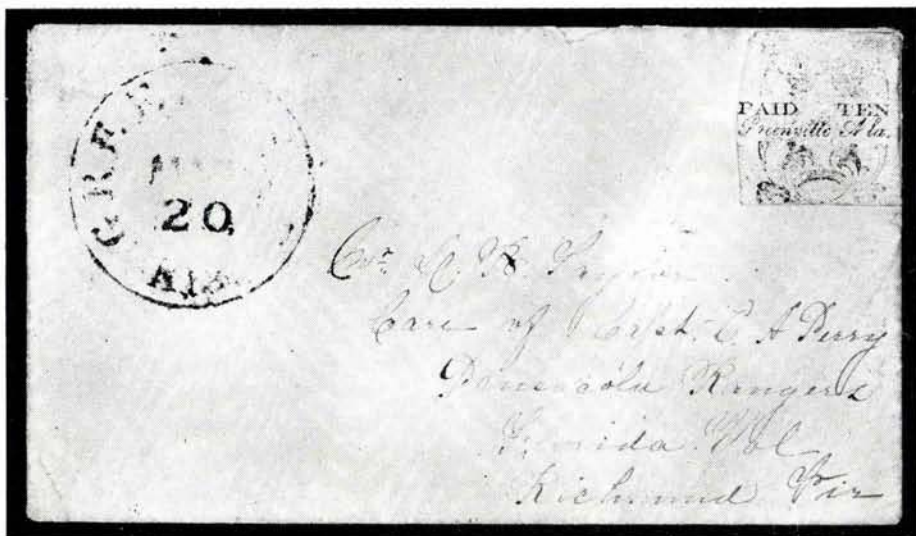


- 311  **Gonzales, Tex. 10c Gold on Garnet (30X2).** Large margins, tied by ms. lines, clear Gonzales pmk., matching "Paid" on neat folded letter to San Antonio, Very Fine, Very Rare on cover, A beauty, Ex Caspary (Photo) 2,000.00

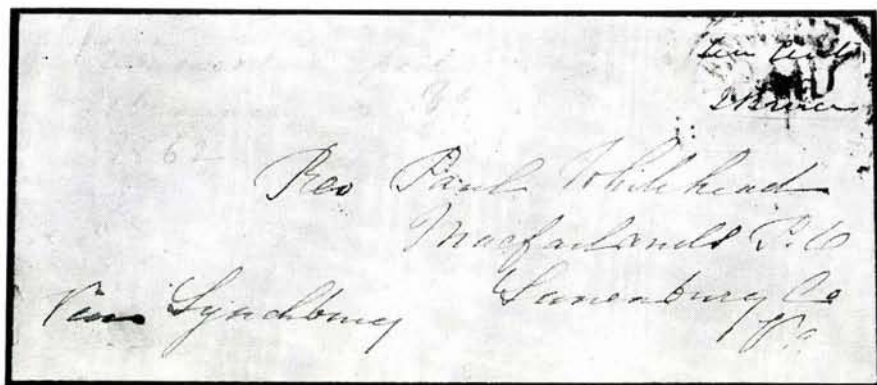


- 312  **Gonzales Texas 5c Gold on Black (30X3).** Large margins, Uncancelled on Fresh Folded Cover to Victoria with clear Gonzales pmk., "Paid 5" in ms., sealed cover tear at L.L., otherwise Very Fine, Very Rare, Ex Caspary ..... (Photo) 2,000.00
- 313 ★ **Greenville, Ala. 5c Red & Blue on White, Ty. I (33X1).** Margins except barely touched at one point, Unusually Rich Color & Impression, ms. initials & date on reverse, Choice, V.F., with P. F. Certificate (Photo) 1,500.00





- 314  Greenville, Ala. 10c Red & Blue on White, Ty. II (33X2). Variety "R" of Greenville Inverted, margins all around, uncanceled, minor gum soak, on small cover to Richmond with partly indistinct town pmk., Rare & Most Attractive, only one other cover known, Ex Caspary ..... (Photo) 2,000.00



- 315  Greenwood Depot, Va. 10c on Gray Blue (35X1). Large margins, two L. corners clipped diagonally, tied by light Greenwood Depot pmk. on Fresh Green Cover made from Sheet Music, used to Macfarland, Va., Extremely Fine, only 5 or 6 examples known, of which this is the only known example with stamp tied, Ex Caspary ..... (Photo) 1,850.00

**LOTS ON VIEW FROM APRIL 20th**  
**OFFICES OPEN EVERY SATURDAY**



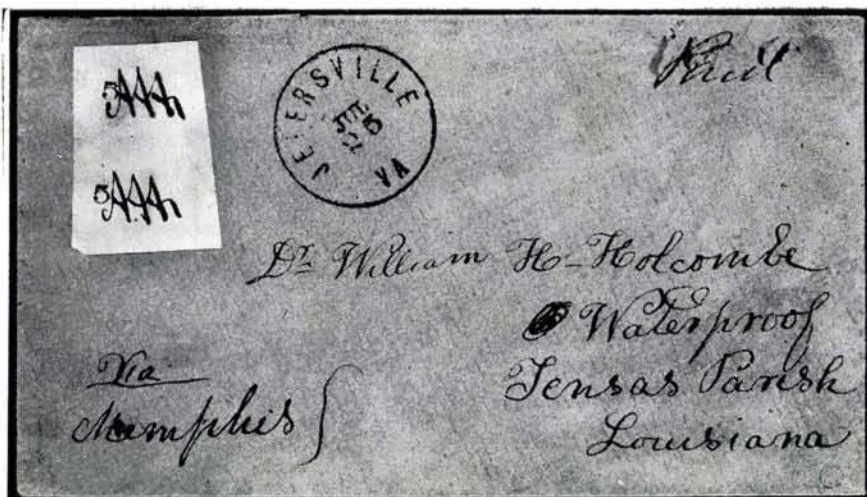
- 316  **Grove Hill, Ala. 5c Black on Laid (36X1).** Large margins, magenta ms. cancel on front only with Grove Hill pmk., used to Jackson, Ala., stamp has minute margin tear, front has small sealed nick at T., not over two other examples known, A Great Confederate Rarity, Ex Caspary (Photo) 9,000.00
- 317  **Grove Hill, Ala. Paid 5 on Fresh Orange Envelope to Ft. Morgan,** clear Grove Hill pmk., Fresh, Extremely Fine, Ex Caspary ..... E. III



318

319

- 318 ★ **Helena, Texas 5c Black on Buff (38X1).** Clear Large Margins, faint creases & tiny toned speck, Very Fine appearance, only known unused copy of this Great Rarity, two used copies, known ..... (Photo) 2,500.00
- 319 **Helena, Texas 10c Black on Gray (38X2).** Large margins, faint Red cancel, small interior tear & tiny thin, Extremely Fine appearance, the Finer of the two known copies ..... (Photo) 1,000.00
- 320  **Independence, Tex. 10c Black on Buff (41X3).** Cut Square, faint diag. crease, bit toned, not cancelled on Orange Cover to Shreveport, "Independence Tex." pmk., cover restored at top, Very Rare, Ex Caspary (Photo) 1,100.00



- 321  **Jetersville, Va. 5c on White Laid (44X1).** Vertical Pair, Huge Margins, bit toned & vertical crease at R., far from design, uncanceled, on fresh orange cover with clear Jetersville, Va. pmk. and ms. "Paid", used to Waterproof, La. Unique & Most Attractive Cover, Ex Ferrari, Caspary (Photo) 3,750.00
- 322  **Jonesboro, Tenn. 5c Blue on Orange Provisional Entire (45XU5).** Clear Jonesboro pmk., used to Kentucky, A Gem, Extremely Fine, Ex Emerson, Caspary ..... (Photo) 450.00
- 323 ★ **Knoxville, Tenn. 5c Brick Red on Grayish Laid (47X1).** Clear to Large Margins, Rich Color, pinpoint thin speck, Very Fine appearance (Photo) 500.00



- 324  **Knoxville, Tenn. 10c Green on Grayish Laid (47X3).** Margins all around, tied by light town pmks. on cover to Va., **Only Known Cover** & possibly only known copy of this stamp, A Wonderful Cover Very Fine, Ex Ferrari, Caspary ..... (Photo) 5,000.00





325

*Emory Va  
Richmond 1861*

*Col. Alex. M. Davis*

301

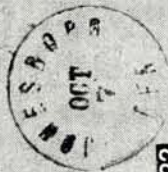


326

*Mr. H. C.*

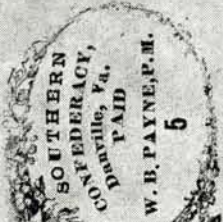


*Mr. Samuel S. Jackson*



322

*Mr. J. Williams*



300



329

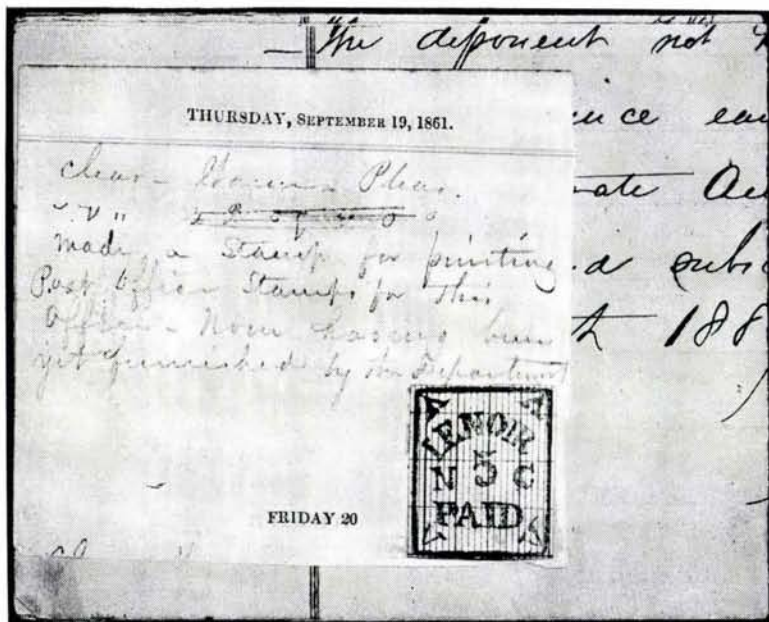
*4 Reg. Texas Volunteers  
Richmond*



*Mr. J. Williams  
Richmond*

320

- 325  **Knoxville, Tenn. 5c Blue on White Provisional Entire (47XU1).** Uncancelled, as usual Fine, Ex Seybold, Hind ..... (Photo) 275.00
- 326  **Knoxville, Tenn. 5c Blue on Orange (47XU2).** Uncancelled, as usual, addressed to Morristown, Fresh, Very Fine, Ex Caspary ..... (Photo) 275.00



- 327 ★ **Lenoir, S. C. 5c Blue & Orange (49X1).** Margins all around, Exceptionally Rich Color & Impression, fastened to small portion of diary page, referring to mfg. of the stamp, the diary being that of the P. M. Son, who cut the die and kept this "the first good impression", also sworn statement relating these facts, a Wonderful Provisional Showpiece, Ex Caspary (Photo) 1,500.00

*LOTS ON VIEW FROM APRIL 20th*

*OFFICES OPEN EVERY SATURDAY*





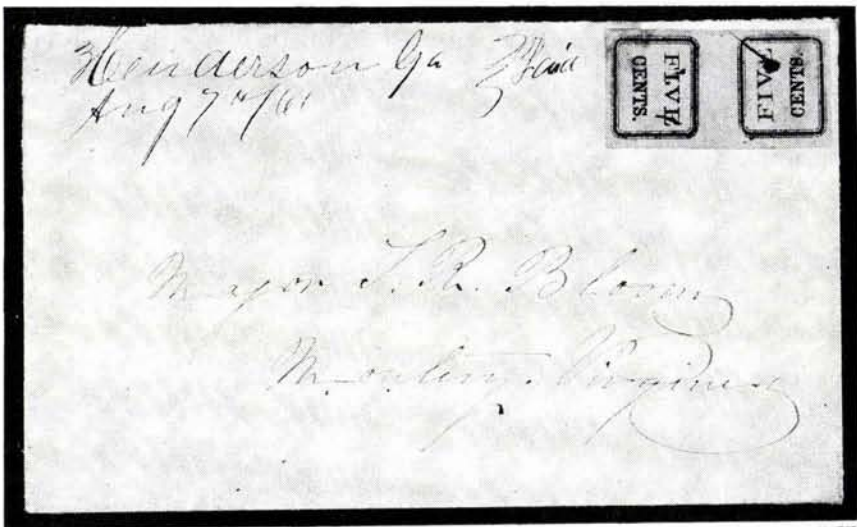
- 328  Livingston, Ala. 5c Blue (51X1). Ample to Enormous Margins, sheet margin at T., tied by Livingston pmk. on cover to Mobile, cover bit reduced at L. & minor age spots, stamp Extremely Fine, A Wonderful Example of this Handsome Provisional, Ex Caspary ..... (Photo) 8,000.00



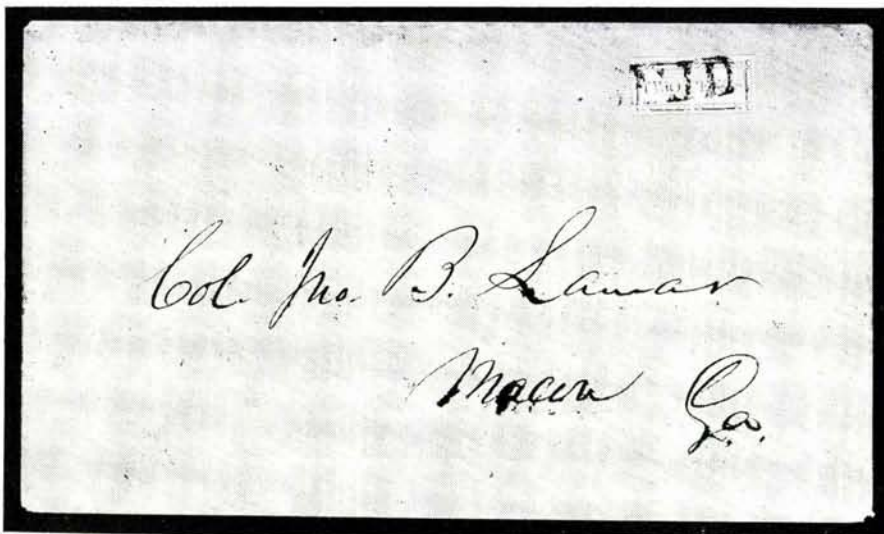
- 329  Livingston, Ala. 5c Blue (51X1). Horiz. Pair, Large Margins all around, tied by clear Livingston pmk. on fresh homemade cover to Manassas Junction, Va., A Unique & Magnificent Gem, the Most Valuable of all Confederate Items ..... (Photo) 22,500.00
- 330 ★ Lynchburg, Va. 5c Dark Blue (52X1b). Clear to Large Margins, faint vertical crease, Very Fine appearance ..... (Photo) 160.00+
- 331  Lynchburg, Va. 5c Black on Amber Provisional Entire (52XU2). Lynchburg Jun 5 pmk., used to Richmond, Very Fine, Ex Caspary ..... (Photo) 350.00



- 332  **Lynchburg, Va. 5c Black on Buff Provisional Entire (52XU3).** Clear Lynchburg Jun 18 pmk., used to Haynesville, Tenn., Fresh, Extremely Fine, Ex Caspary ..... (Photo) 350.00
- 333  **Macon, Ga. 5c Black on Yellow (53X3).** Horiz. Pair, Huge Margins, tied by town pmk. on small cover to Richmond, cover bit reduced at R. & clipped Diagonally at U. L., stamps Extremely Fine, Ex Caspary (Photo) 1,400.00
- 334  **Macon, Ga. 5c Black on Lemon Yellow (53X4a).** Large margins, tied by town pmk. on Fresh Orange Cover to "Bergelia", Ga., June 18, 1861 Docket at L., Very Scarce Shade, Very Fine, Ex Caspary ..... (Photo) 1,000.00



- 335  **Macon, Ga. 5c Black on Yellow (53X4b).** Tete Beche Pair, light ms. cancels, "Henderson, Ga. Aug. 7 '61" in ms., matching Paid on fresh small cover to Va., one has faint crease & minor gum stain, otherwise Extremely Fine, Unique, Ex Ferrari, Hind, Caspary ..... (Photo) 2,500.00



- 336  **Macon, Ga. 2c Black on Gray Green (53X5).** Margins all around, tied by clear str. line "Paid" on Local Cover, Extremely Fine, Ex Caspary, by far the finest of the 4 or 5 Known Examples of this Rare Provisional (Photo) 2,850.00



PAID.

332



*Miss R. S. ...*



PAID.

331



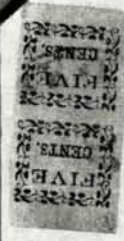
*Dr. Wm. A. Guathrey  
Richmond*

344



343

*paid*



*Thos. L. Howell Co.  
Richmond  
John B. Samson?  
Virginia*

333

*Dear Sir,  
I have the honor to acknowledge  
the receipt of your letter of 18th inst.  
and in reply to inform you  
that the same has been forwarded  
to the proper authorities  
for their consideration.  
I am, Sir, very respectfully,  
Your obedient servant,  
J. M. ...*

*Robt. E. ...  
"Bozonia"  
Georgia*

334





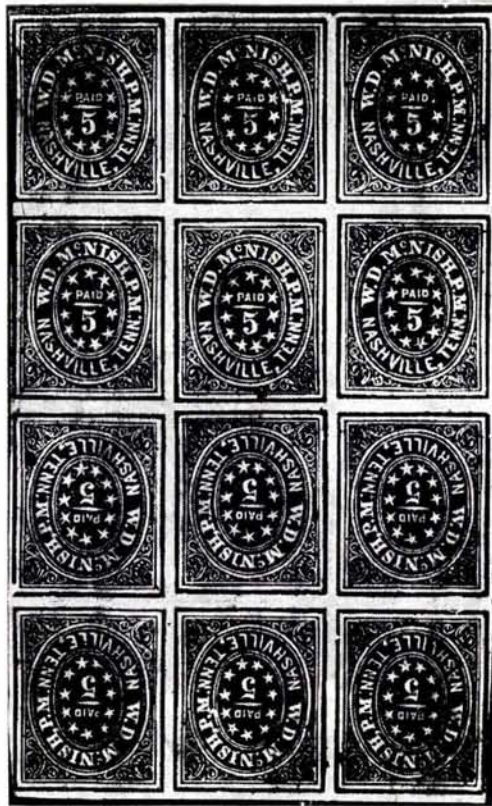


- 337 ★ **Macon, Ga. 5c Black on Yellow Laid (53X6).** Large margins, microscopic corner creases, well clear of design, otherwise Extremely Fine, listed but unpriced used, not listed unused in Scott, previously only one used copy known ..... (Photo) E. XV
- 338 ★田 **Memphis, Tenn. 2c Blue (56X1).** Block, two stamps at R. incompletely printed as a result of breaking off of plate, faint creases in margins and in top pair, others Extremely Fine ..... (Photo) 50.00+
- 339 ★ **Mobile, Ala. 2c Black (58X1).** Large margins, faint crease & trivial thin specks, Extremely Fine appearance ..... (Photo) 600.00
- 340 ★ **2c-5c Mobile, Nashville, New Orleans Provisionals (58X2, 61X1, 62X1, 62X2, 62X5, two).** First lightly cancelled, small faults, F.-V. F. appearance 112.00
- 341 ① **Montgomery, Ala. 5c Red on Orange Provisional Entire (59XU2).** Clear Jun 27, 1861 Montgomery pmk., Very Fine, Ex Caspary ..... (Photo) 65.00
- 342 ① **Montgomery, Ala. 5c Red on Orange Provisional Entire (59U2).** Clear Jul 25, 1861 Montgomery pmk., used to Haynesville, Fresh, V. F. (Photo) 65.00
- 343 ① **Montgomery, Ala. 10c Blue on White Provisional Entire (59XU7).** Bold Oct. 26, 1861 Montgomery pmk., used to Texas, fresh one side flap missing, Rare, Very Fine, Ex Emerson, Caspary ..... (Photo) 250.00
- 344 ① **Montgomery, Ala. 10c on 5c Red on Orange Provisional Entire (59XU13).** Clear Montgomery Jul 20, 1861 pmk, Very Fine, Rare, Ex Hind, Emerson, Caspary ..... (Photo) 400.00
- 345 ★ **Nashville, Tenn. 5c Brick Red on Gray Blue Ribbed (61X3).** Huge margins showing over half the next stamp at top, Brilliant Unusual Color, minor wrinkles, faint crease in margin between designs, Extremely Fine, A Marvelous Copy, Ex Caspary ..... (Photo) 250.00

*LOTS ON VIEW FROM APRIL 20th*

*OFFICES OPEN EVERY SATURDAY*





- 346 ★田 Nashville, Tenn. 5c Violet Brown on Gray Blue Ribbed (61X5, 61X5a). Vertical Block of Twelve, Including Three Tete Beche pairs at center, large margins except outer frame touched in two places, Wonderful Rich Color, fresh, o. g., few stamps have small faults, Extremely Fine appearance, A Rare & Magnificent Showpiece, only one other block of 12 known, Tete Beche pairs not priced ..... (Photo) E. XV
- 347 ★ New Orleans, La. 2c Blue (62X1). Clear to large margins, o. g., V. F. .... 16.50
- 348 ★ New Orleans 5c Brown on Blue (62X4). Huge margins, o. g., barest trace of bend, still Extremely Fine ..... (Photo) 60.00
- 349 ★ New Orleans, La. 5c Brown on Yellowish (62X5). Complete Pane of Forty, Large Margins, light creases, marginal gum soak & few tiny margin tears, probably only complete pane known, Ex Deats, Caspary ..... 1,000.00+



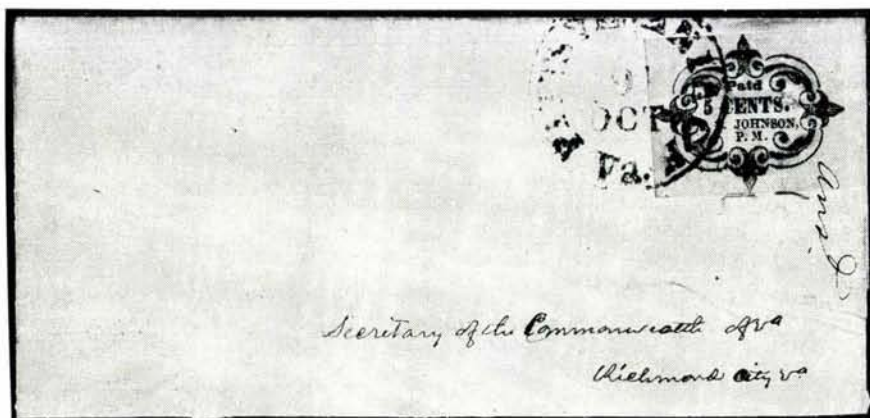
350

351

- 350 **New Orleans, La. 5c Red (62X6).** Large margins, light town pmk. & bold "Due" small faults, Very Fine appearance, two other copies known, one of which is unused, Ex Caspary ..... **(Photo)** 2,650.00
- 351 **New Orleans, La. 5c Red on Blue (62X7).** Large margins, clear New Orleans pmk., small faults, Very Fine appearance, only one other copy known, also with faults ..... **(Photo)** 2,650.00
- 352 ★ **Petersburg, Va. 5c Red (65X1).** Pos. 8, clear to Huge Margins, fresh, faint horiz. crease, Very Fine appearance ..... **(Photo)** 150.00



- 353 ★ **Pittsylvania Courthouse, Va. 5c Dull Red (66X1).** Fresh, almost full o. g., pinpoint thin speck & microscopic crease, otherwise Extremely Fine, probably unique, Ex Caspary ..... **(Photo)** 2,500.00



- 354  **Pittsylvania Court House 5c Dull Red on Laid (66X2).** Rich Color, tied by clear "Pittsylvania C H Va. 9 Oct." pmk. on fresh folded cover to Richmond, faint vertical wrinkle & negligible toning, still Extremely Fine, only Known Cut Square Copy on Cover, A Rare & Very Handsome Cover **(Photo)** 2,850.00

- 355 ★ Pleasant Shade, Va. 5c Blue (67X1). Pos. 3 huge margins, fresh, faint crease & pinpoint thin specks, Extremely Fine appearance ..... (Photo) 1,000.00



- 356 ★ 田 Pleasant Shade Va. 5c Blue (67X1). Block of Six, both rows Pos. 2-4, margins except just in at L. R. Corner faint horiz. crease in B. row, few negligible natural wrinkles & faint toned specks, A Unique & Handsome Block, only known multiple larger than a pair, Ex Caspary ..... (Photo) 6,000.00
- 357 ☒ Raleigh, N. C. 5c Red on White Provisional Entire (68XU1). Multicolor Nine Star Flag Patriotic, Clear Blue Raleigh pmk., used to Charlotte, fresh, Extremely Fine, A Little Gem, Ex Emerson, Caspary ..... (Photo) 300.00
- 358 ☒ Raleigh, N. C. 5c Red on Buff Provisional Entire (68XU4A). Bold Raleigh pmk., used to Hillsboro, Brilliant, Fresh, Extremely Fine, Ex Caspary (Photo) 65.00
- 359 ☒ Raleigh, N. C. 5c Red on Brownish Provisional Entire (68XU6). Bold Blue Raleigh pmk. used to Rural Hill, Fresh, Very Fine, Ex Caspary (Photo) 65.00
- 360 ★ Rheatown, Tenn. 5c Red (69X1). Ty. I, Gigantic Margins, full sheet margin at L., faint vert. crease in margin, far from design, stamp Extremely Fine, Ex Caspary ..... (Photo) 600.00
- 361 ☒ Richmond, Tex. 5c Red on Amber Provisional Entire (70XU2). Clear Blue Richmond pmk., used to New Orleans, Very Fine, Rare, Ex Hind, Caspary (Photo) 225.00
- 362 ☒ Richmond, Texas 10c Red on Blue Provisional Letter Sheet (70XU7). Bold Richmond pmk., used in 1864 to Houston, Fresh Very Fine, Rare Ex Caspary ..... (Photo) 400.00
- 363 ☒ Richmond, Texas 10c over 5c Red on White Provisional Mourning Entire (70XU9). Clear Blue Richmond pmk., used to N. C., Gem, Extremely Fine, a Unique and Handsome Cover, Ex Phillips, Brown, Brooks (Photo) 575.00
- 364 ☒ Salem, N. C. 5c Black on Amber Provisional Entire (73XU1). Clear Salem pmk., used to How River, Very Fine, Ex Emerson, Caspary (Photo) 150.00





- 365  **Salem, Va. 5c Black on Vertical Laid (74X1).** Uncancelled, on Fresh Orange cover to Lynchburg with clear Salem pmk., "Paid 5" in ms., Extremely Fine, Handsome & Unique Provisional, Ex Caspary ..... (Photo) 2,000.00
- 366  **Salisbury, N. C. Five Cents Black on Greenish Provisional Entire (75XU1).** Indistinct Salisbury Sept. 1, 1861 pmk., Matching Paid, used to Clover Depot, Va., piece missing at L., removing small portion of design, water stains, Only Example known, Ex Emerson, Caspary ..... (Photo) 1,000.00
- 367  **Selma, Ala. 5c on Amber Provisional Entire (77XU2).** Clear Selma pmk., used to Montgomery, Rare, Very Fine, Ex Ferrari, Hind, Caspary (Photo) 225.00
- 368  **Spartanburg, S. C. 5c Black on White with Blue Lines (78X1a).** Cut to Shape clear of design, on cover to Richmond with clear June 18, 1861 Spartanburg pmk., Matching Paid cover neatly repaired at top, Fresh & Attractive, Rare ..... (Photo) 850.00
- 369  **Statesville, N. C. 5c Black on White Provisional Entire (79XU1).** Clear Statesville pmk., used to Deep Well, Fresh V.F., Ex Caspary (Photo) 65.00
- 370  **Statesville, N. C. 5c Black on White Letter Sheet (79XU1 var.).** Clear Statesville pmk. on neat folded letter to Hillsborough, Letter Sheet not listed in Scott ..... (Photo) 65.00+
- 371 ★ **Tellico Plains, Tenn. 5c Red on Laid (81X1).** Large margins, fresh, o.g., Extremely Fine ..... (Photo) 225.00
- 372 ★ **Tellico Plains, Tenn. 5c, 10c Red on Laid (81X1, 81X2).** Cpl. Setting, Horiz. Se-Tenant Strip of Three, stamp at R. is 10c, margins all around except stamp at L. just touched in two places, faint toned speck in first & marginal crease between 1st & 2nd stamps, the Se-Tenant Pair is Very Fine (Photo) 775.00

361

SALISBURY.  
N. C.  
POSTAGE



7 CENTS  
P. M.

366

Ms. May 11. 1862  
Care of Mrs. Peter Cook



*Ms. May 11. 1862*



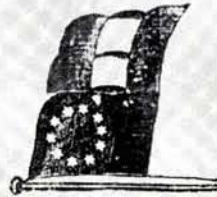
367



363



362



Mrs Alex Sinclair,  
Charlotte,  
N. C.

357

368

1862  
11  
1862  
Capt. Jos Walker  
Richmond Virginia  
5th Regt. So. Car Volunteers  
"Spitzer's Rifles"  
Ed. McJentzen, Command  
Corpl. Edward J. Dean



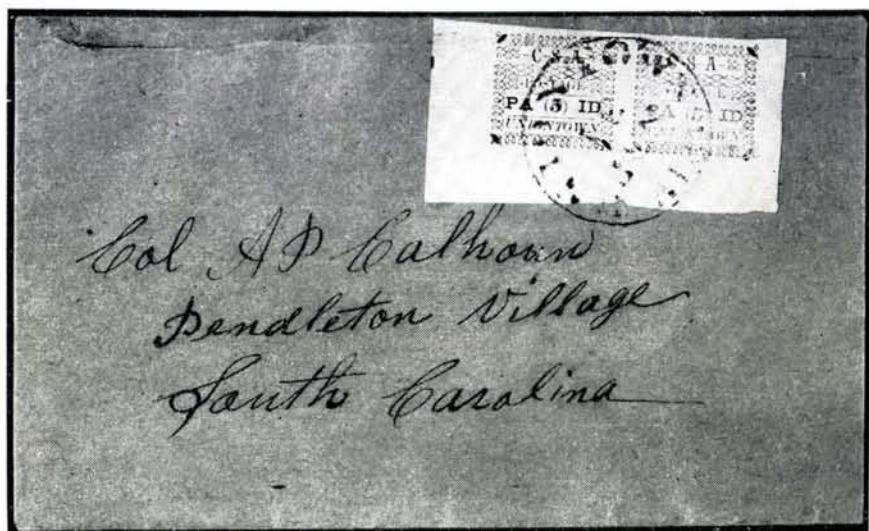
PAID





- 373  **Uniontown, Ala. 2c Dark Blue on Gray Blue Laid (86X1).** Ty. I, Enormous margins, scissor cut in L. R. corner, far from design, uncanceled, on Local Cover with "Drop Letter" in ms., cover has nick in U. L. corner, stamp Extremely Fine, only copy known on cover, Ex Ferrari, Caspary  
 (Photo) 6,500.00

- 374  **Uniontown, Ala. 5c Green on Gray Blue Laid (86X3).** Ty. III, Huge Margins, tied by indistinct town pmk. on cover to Marion, cover reduced at L., stamp has tiny toned spot, otherwise Extremely Fine, Ex Caspary  
 (Photo) 800.00



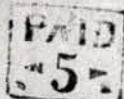
- 375  **Uniontown, Ala. 5c Green on White Laid (86X4).** Horiz. Pair, Ty. III, IV, Gigantic Margins, tied by clear Uniontown pmk. on fresh Homemade cover to S. C., Letter Enclosed, cover neatly repaired at T., crease and two tears in T. margin of L. stamp, A Unique & Handsome Cover, Ex Caspary ..... (Photo) 3,500.00





W. Sullivan St. Linstock  
New River  
N.C.

364



Mrs. Kate Anderson  
Dup. Hill  
N.C.

369



George Lane Esq.  
Hillsborough  
N.C.

370



Wm. H. ...  
Hillsborough

358



341



M  
Care of  
E. L. Wood



342



359



Mrs. C. O. Shivers  
Marion  
Ala.

374

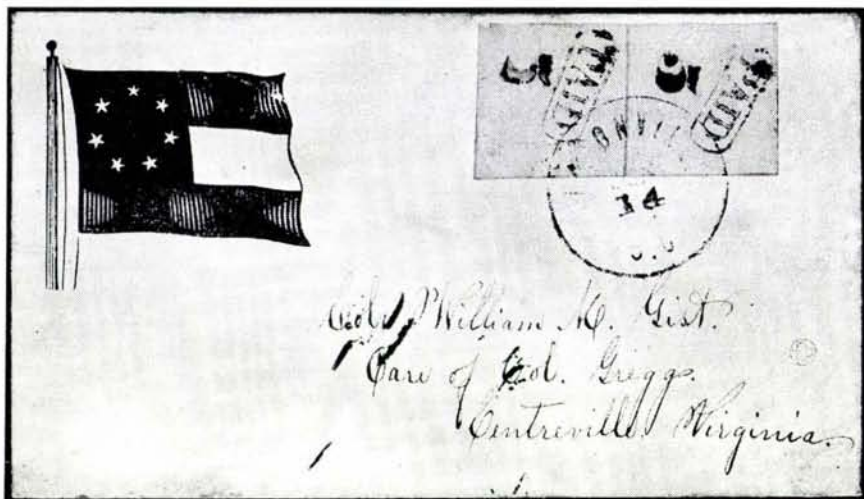


Miss Corie Sutton  
Batesville  
Georgia

379



- 376 ★ **Uniontown, Ala. 10c Red on Gray Blue Laid (86X5).** Ty. IV, Large Margins, uncancelled, on 2"x3" piece with Indistinct pmk., faint gum soak & paper pore, Extremely Fine, only uncancelled copy known, Ex Caspary (Photo) 2,500.00



- 377 ☒ **Unionville, S. C. 5c on Grayish with Blue Lines (87X1).** Vertical Pair, tied by Unionville pmk. on Fresh Multicolor 7 Star Flag Patriotic to Va., A magnificent & Unique Gem, one of the Finest of all Confederate Covers (Photo) 8,000.00
- 378 ★ **Victoria, Texas 5c Red Brown on Green (88X1).** Margins to barely touched light vertical creases, Fine appearance, Very Rare, Ex Caspary (Photo) 800.00
- 379 ☒ **Weatherford, Tex. 5c+5c on White Provisional Entire (109XU2).** Bold Weatherford pmk. used to Georgia, trivial sealed cover faults, part of flap, missing, Fine, Rare ..... (Photo) 550.00



**CONFEDERATE STATES GENERAL ISSUES**

- 380 ★田 **5c Bright Green (1)**. Block, Pos. 6-7, 16-17, margins all around, Rich Color, o. g., trivial tiny faults, Very Fine appearance, Handsome Block  
(Photo) 125.00
- 381 ★田 **5c dark Green (1b)**. Block, margins all around, microscopic nick at B., fresh, o. g., trivial faint creases, Very Fine appearance ..... (Photo) 125.00
- 382 ★ **5c Deep Green, Stone 2 (1)**. Horiz. Strip of Five, Pos. 16-20, o. g., Huge Margins, Rich Lovely Color, tiny wrinkle, not visible in fluid, a Magnificent & Rare Strip, Extremely Fine, Ex Caspary ..... (Photo) 121.50+
- 383 ★ **10c Light Milky Blue (2)**. Stone Y, Huge Margins, Fresh, o. g., pinpoint thin speck, otherwise Extremely Fine, A Lovely Copy ..... 35.00
- 384 ★田 **10c Blue, Hoyer & Ludwig (2)**. Block, Huge Margins, Gorgeous Color, o. g. faint thin at B., tiny crease in one, Extremely Fine appearance, A Beautiful Block ..... (Photo) 175.00
- 385 ★田 **10c Dark Blue, Patterson (2b)**. Horiz. Block of Six, Huge Margins, fresh o. g., faint creases in B. margin and between horiz. rows, negligible wrinkles, otherwise Extremely Fine, A Handsome block, Ex Caspary  
(Photo) 145.00+
- 386 ★田 **10c Milky Blue, Stone Y (2)**. Vertical Block of 10, Large Margins except U. R. corner rounded, fresh, o. g., horiz. crease in center pair, U. R. corner thin, otherwise Extremely Fine, A Remarkable Block ..... (Photo) 500.00+
- 387 ☒ **10c Milky Blue (2)**. Huge Margins, tied by clear Selma, Ala. pmk. on fresh homemade cover to Capt. Reben Chapman, to whom the cover with the pair of Livingston Provisionals is Addressed, A Beauty, Extremely F. 22.50
- 388 ★ **2c Green (3)**. Large margins, o. g., negligible gum wrinkle, Extremely Fine  
(Photo) 60.00
- 389 ★ **2c Green (3)**. Pos. 21, mark at U. L., large margins, o. g., pinpoint thin speck, otherwise Extremely Fine ..... (Photo) 65.00
- 390 ★田 **2c Green (3)**. Block, margins except barely touched at U. R., o. g., trivial tiny creases, negligible scuff specks, unusual printing streak in R. stamps, Very Fine appearance, Rare Block, Ex Caspary ..... (Photo) 375.00
- 391 ★ **5c Light Milky Blue (4b)**. Clear to Huge Margins, Fresh, o. g., Very Fine 27.50
- 392 ★田 **5c Dark Blue (4a)**. Horiz. Block of 8, Stone II, large margins, nice color, o. g., few faint creases & tiny thins, a Very Pretty Block ..... (Photo) 400.00+
- 393 ★田 **5c Dark Blue (4)**. Horiz. Block of Twelve, Stone 3, Pos. 41-46, 1-6 Huge Margins, Wonderful Color, full o. g., faint vertical crease in 4th Row, gum crinkles, minor stain in L. R. Corner, A Very Choice & Handsome Block, The Largest Known from Stone 3, Ex Caspary ..... (Photo) 600.00+
- 394 ★ **10c Rose (5)**. Huge margins, Pretty Color, o. g. tiny thin specks, Extremely Fine appearance ..... (Photo) 95.00
- 395 ★田 **10c Rose (5)**. Block, Huge Margins, Exceptionally Deep Rich Color, faint crease in B. pair, U. R. stamp thin, Extremely Fine appearance, one of Very Few blocks known and probably as nice a block as exists, Ex Caspary ..... (Photo) 800.00
- 396 ★ **2c-20c General Issues (6, 8, three, 11, three, 12, five, 13, two)**. All diff. shades, full margins, mostly o. g., Very Fine, also No. 12 on a neat cover from Charleston ..... 59.60



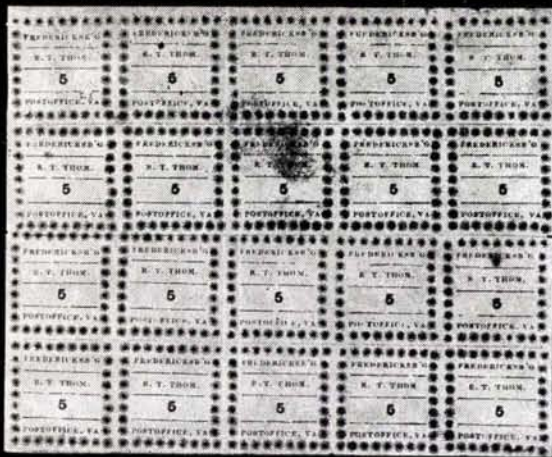
- 397 ★ 2c Brown Red (8). Vertical Block of Six, Large Margins, Vivid Color, usual negligible tiny gum crease, otherwise Extremely Fine ..... 45.00
- 398 ★ 10c Blue TEN (9). Huge margins, Brilliant Color, fresh, o. g., negligible gum crease, otherwise Extremely Fine ..... (Photo) 75.00
- 399 ★ 10c Blue TEN (9). Huge margins, Rich Color, o. g., faint horiz. crease, Extremely Fine appearance ..... (Photo) 75.00
- 400 ★ 10c Blue TEN (9). Large margins, nice color, trivial toned specks, otherwise Very Fine ..... (Photo) 75.00
- 401 ★ 10c Deep Gray Blue TEN (9). Horiz. Block of Ten, U. L. Stamp Double Transfer, Enormous Margins except U. L. stamp touched at L., Incredible Rich Color, o. g., negligible wrinkles as always, Extremely Fine, A Magnificent Block, Ex Caspary ..... (Photo) 915.00+
- 402 ★ 10c Blue Frame Line (10). Large margins, showing full frame L. & T. and part at B., Rich Color, o. g., usual negligible gum creases, otherwise Extremely Fine, a Fresh & Pretty Copy ..... (Photo) 350.00



- 403 ★ 10c Blue Frame Line (10). Horiz. Strip of Seven, showing Full Frames at L. & Top, Rich Color, o. g., Vertical creases in 3, one has tiny tear & thin speck others Very Fine, a Great Rarity No Larger Strip Known ..... (Photo) 3,350.00+
- 404 ★ 10c Blue, Perforated (11d, 12e). Fresh, o. g., Fine-Very Fine ..... 32.50
- 405 ★ 20c Green (13). Block of Nine, Enormous Margins, o. g., thinning in sheet margin at L., otherwise Extremely Fine ..... 54.00
- 406 ★ 1c Orange (14). Two Shades, Fresh, o. g., Extremely Fine ..... 37.00
- 407 ★ 1c-20c General Issues (1, two, 2, 4, two, 6-8, 11, five, 12, three, 13, 14). Mostly small faults, Fine-Very Fine appearance ..... 134.90

END OF SALE

*LOTS ON VIEW FROM APRIL 20th*  
*OFFICES OPEN EVERY SATURDAY*



303



338



380



381



384



386



385



392



390



401



393



395



## Thank You

310th Sale	U. S. Covers .....	\$ 71,709.50
311th Sale	William Hicks Collection .....	39,259.50
312th Sale	Josiah K. Killy - Part I - U. S. 19th Century .....	494,612.50
313th Sale	Rarity Sale .....	255,195.00
314th Sale	Josiah K. Lilly - Part II - British	319,473.00
		<hr/>
1st Quarter Total		\$1,180,249.50

# THE JOSIAH K. LILLY COLLECTION

## SCHEDULE OF SALES

*(All sales will be held at the Waldorf-Astoria Hotel)*

<i>Sale IV</i>	General Foreign <i>Thursday and Friday, June 8-9, 1967</i>	(4 sessions)
<i>Sale V</i>	U. S. Proofs, Encased Postage, Stamp Currency, Locals and Carriers <i>Wednesday and Thursday, September 13-14, 1967</i>	(3 sessions)
<i>Sale VI</i>	General Foreign <i>Monday and Tuesday, November 20-21, 1967</i>	(4 sessions)
<i>Sale VII</i>	United States 19th & 20th Century <i>Wednesday and Thursday, January 24-25, 1968</i>	(4 sessions)
<i>Sale VIII</i>	British Commonwealth <i>March, 1968</i>	(4 sessions)
<i>Sale IX</i>	U. S. Revenues, Envelopes, Telegraphs <i>May, 1968</i>	(4 sessions)
<i>Sale X</i>	Latin America and Asia <i>June, 1968</i>	(3 sessions)



## ESTIMATES

Our sales contain many 19th Century covers and fancy cancellations. We have had many requests to give the estimated cash value on these lots. We are trying to place a fair net valuation on each lot as a guide for bidding when no catalogue value portrays the true value. The chart below will be used, for example E. IV means our estimate cash value on this lot is \$30.00 to \$40.00. Lots may actually realize more or less than these estimates and under no circumstances are these estimates to be considered reserves but merely a guide to bidding.

E. I	up to \$10.00	E. VIII	\$100.00 to \$150.00
E. II	\$10.00 to \$20.00	E. IX	\$150.00 to \$200.00
E. III	\$20.00 to \$30.00	E. X	\$200.00 to \$250.00
E. IV	\$30.00 to \$40.00	E. XI	\$250.00 to \$350.00
E. V	\$40.00 to \$50.00	E. XII	\$350.00 to \$500.00
E. VI	\$50.00 to \$75.00	E. XIII	\$500.00 to \$750.00
E. VII	\$75.00 to \$100.00	E. XIV	\$750.00 to \$1000.00
		E. XV	over \$1000.00

## PRICES REALIZED

### THIS SALE

**\$1.00**

**OR ENTIRE YEAR \$5.00**







317th SALE

*List of Prices Realized*

JOSIAH K. LILLY COLLECTION

PART III

Canal Zone, Cuba, D. W. Indies,  
Guam, Hawaii,  
Philippines, Puerto Rico  
and  
Confederate States  
of America

APRIL 27th, 1967 (2 Sessions)

TOTAL \$285,294.50

*Robert A. Siegel*  
**AUCTIONS**

10 EAST 52nd STREET NEW YORK, N. Y. 10022  
Tel: 212 PLaza 3-6422

Lot#	Price	Lot#	Price	Lot#	Price	Lot#	Price	Lot#	Price	Lot#	Price
1	62.50	69	260.00	137	15,500.00	205	18.00	273	325.00	341	80.00
2	75.00	70	40.00	138	45.00	206	60.00	274	950.00	342	67.50
3	110.00	71	160.00	139	750.00	207	70.00	275	475.00	343	290.00
4	135.00	72	95.00	140	45.00	208	28.00	276	900.00	344	475.00
5	40.00	73	20.00	141	32.50	209	20.00	277	115.00	345	290.00
6	17.00	74	525.00	142	210.00	210	18.00	278	500.00	346	4,250.00
7	27.00	75	27.00	143	320.00	211	28.00	279	1,000.00	347	15.00
8	17.00	76	110.00	144	36.00	212	625.00	280	4,000.00	348	50.00
9	44.00	77	62.50	145	19.00	213	175.00	281	2,900.00	349	950.00
10	240.00	78	37.50	146	70.00	214	100.00	282	1,050.00	350	1,500.00
11	250.00	79	20.00	147	27.00	215	52.50	283	220.00	351	1,800.00
12	450.00	80	105.00	148	77.50	216	160.00	284	2,100.00	352	140.00
13	37.50	81	135.00	149	50.00	217	50.00	285	1,600.00	353	1,700.00
14	24.00	82	37.50	150	340.00	218	200.00	286	9,000.00	354	2,700.00
15	47.50	83	30.00	151	1,100.00	219	62.50	287	4,250.00	355	475.00
16	62.50	84	19.00	152	625.00	220	270.00	288	160.00	356	4,000.00
17	30.00	85	52.50	153	340.00	221	45.00	289	240.00	357	425.00
18	110.00	86	45.00	154	23.00	222	57.50	290	330.00	358	75.00
19	115.00	87	15.00	155	360.00	223	65.00	291	240.00	359	60.00
20	75.00	88	13.00	156	500.00	224	90.00	292	60.00	360	550.00
21	32.50	89	15.00	157	57.50	225	42.50	293	320.00	361	380.00
22	35.00	90	19.00	158	57.50	226	42.50	294	280.00	362	475.00
23	210.00	91	38.00	159	725.00	227	32.00	295	170.00	363	700.00
24	130.00	92	19.00	160	155.00	228	28.00	296	28.00	364	240.00
25	62.50	93	20.00	161	52.50	229	21.00	297	135.00	365	1,700.00
26	25.00	94	120.00	162	400.00	230	15.00	298	1,400.00	366	650.00
27	70.00	95	140.00	163	40.00	231	425.00	299	4,250.00	367	240.00
28	20.00	96	60.00	164	28.00	232	75.00	300	700.00	368	425.00
29	60.00	97	60.00	165	100.00	233	170.00	301	850.00	369	60.00
30	16.00	98	57.50	166	45.00	234	105.00	302	2,500.00	370	70.00
31	32.00	99	675.00	167	425.00	235	230.00	303	525.00	371	300.00
32	22.00	100	52.50	168	800.00	236	270.00	304	130.00	372	425.00
33	57.50	101	23.00	169	40.00	237	21.00	305	3,600.00	373	6,750.00
34	13.00	102	18.00	170	300.00	238	26.00	306	725.00	374	600.00
35	25.00	103	32.50	171	44.00	239	12.00	307	2,800.00	375	5,250.00
36	19.00	104	40.00	172	270.00	240	360.00	308	9,500.00	376	1,900.00
37	250.00	105	37.50	173	300.00	241	200.00	309	4,500.00	377	10,500.00
38	24.00	106	21.00	174	65.00	242	170.00	310	650.00	378	1,000.00
39	57.50	107	21.00	175	60.00	243	52.50	311	2,800.00	379	850.00
40	24.00	108	62.50	176	23.00	244	675.00	312	1,700.00	380	52.50
41	32.50	109	90.00	177	47.50	245	12.00	313	550.00	381	55.00
42	40.00	110	45.00	178	18.00	246	80.00	314	1,300.00	382	145.00
43	13.00	111	57.50	179	18.00	247	11.00	315	2,700.00	383	32.50
44	13.00	112	42.50	180	25.00	248	32.50	316	5,250.00	384	125.00
45	25.00	113	60.00	181	26.00	249	40.00	317	42.50	385	120.00
46	105.00	114	160.00	182	40.00	250	57.50	318	2,000.00	386	250.00
47	55.00	115	14.00	183	42.50	251	230.00	319	1,600.00	387	80.00
48	155.00	116	275.00	184	35.00	252	155.00	320	850.00	388	65.00
49	24.00	117	190.00	185	280.00	253	95.00	321	6,250.00	389	42.50
50	35.00	118	16.00	186	115.00	254	135.00	322	425.00	390	210.00
51	24.00	119	21.00	187	80.00	255	120.00	323	260.00	391	32.50
52	250.00	120	275.00	188	21.00	256	14.00	324	8,500.00	392	95.00
53	26.00	121	450.00	189	55.00	257	21.00	325	90.00	393	220.00
54	100.00	122	125.00	190	340.00	258	23.00	326	280.00	394	75.00
55	19.00	123	37.50	191	1,100.00	259	95.00	327	2,000.00	395	600.00
56	20.00	124	40.00	192	45.00	260	18.00	328	9,500.00	396	26.00
57	19.00	125	37.50	193	180.00	261	75.00	329	19,000.00	397	50.00
58	27.00	126	17,000.00	194	60.00	262	280.00	330	185.00	398	65.00
59	45.00	127	3,800.00	195	270.00	263	400.00	331	425.00	399	55.00
60	65.00	128	3,200.00	196	85.00	264	82.50	332	450.00	400	35.00
61	130.00	129	2,100.00	197	525.00	265	360.00	333	950.00	401	1,200.00
62	40.00	130	4,200.00	198	15.00	266	320.00	334	900.00	402	525.00
63	180.00	131	4,800.00	199	40.00	267	67.50	335	2,300.00	403	3,400.00
64	26.00	132	13.00	200	30.00	268	23.00	336	3,800.00	404	19.00
65	62.50	133	270.00	201	23.00	269	30.00	337	1,150.00	405	52.50
66	60.00	134	80.00	202	30.00	270	100.00	338	105.00	406	13.00
67	21.00	135	3,400.00	203	40.00	271	85.00	339	160.00	407	28.00
68	140.00	136	850.00	204	32.50	272	80.00	340	37.50		