

Thursday, November 16, 2000

# The Dr. Hubert C. Skinner Collection of New Orleans Civil War Postal History



*Robert A. Siegel*

AUCTION GALLERIES, INC.

# Sale 832

Thursday, November 16, 2000  
at 1:30 p.m.

## The Dr. Hubert C. Skinner Collection of New Orleans Civil War Postal History

**Offered at unreserved public auction**

### Pre-sale exhibition

Friday, November 10 — 10:00 a.m. to 4:00 p.m.  
Wednesday, November 15 — 10:00 a.m. to 12:00 p.m.  
Thursday, November 16 — 10:00 a.m. to 12:00 p.m.  
or by appointment (please call 212-753-6421)

**On-line catalogue, e-mail bid form, resources and  
the Siegel Encyclopedia are available on our web site:**

[www.siegelauctions.com](http://www.siegelauctions.com)



5c Red error, lot 3154

### Arrangement of Sale

**Afternoon session (lots 3001-3228)  
Thursday, November 16, at 1:30 p.m.**

Riddell Correspondence .....	pages	5
New Orleans Stamp Money .....		6
Independent and C.S.A. Usage .....		7-9
Thru-the-Lines Express Mail .....		10-15
Antonio Costa's Express .....		16-17
Covert Mail Routes .....		18-19
Confederate Covers to New Orleans .....		20-21
Postmasters' Provisionals Used to New Orleans .....		22-23
Postmaster's Provisionals .....		24-65
Steam and Due Markings .....		66-67
General Issues .....		68-69
Prisoner-of-War Mail .....		70
Federal Occupation .....		71-77
Post-War Expresses .....		78

### On the cover

Only known combination of two different New Orleans provisionals on cover (lot 3060)

## Conditions of Sale (Important—please read carefully)

The property described in this catalogue will be offered at public auction by Robert A. Siegel Auction Galleries, Inc. (“Galleries”) on behalf of various consignors and itself or affiliated companies. By bidding on any lot, whether directly or by or through an agent, in person, or by telephone, facsimile or any other means, the bidder acknowledges and agrees to all of the following Conditions of Sale.

1. The highest bidder acknowledged by the auctioneer shall be the buyer. The term “final bid” means the last bid acknowledged by the auctioneer, which is normally the highest bid offered. **The purchase price payable by the buyer will be the sum of the final bid and a commission of 10% of the final bid (“buyer’s premium”), together with any sales tax or use tax which may be due on the sale.**
2. The auctioneer has the right to reject any bid, to advance the bidding at his discretion and, in the event of a dispute between bidders, to determine the successful bidder, to continue the bidding or to reoffer and resell the lot in dispute. The Galleries’ record of the final sale shall be conclusive.
3. All bids are per numbered lot in the catalogue unless otherwise announced by the auctioneer at the time of sale. The right is reserved to group two or more lots, to withdraw any lot or lots from the sale, or to act on behalf of the seller. The Galleries will execute bidding instructions on behalf of clients, but will not be responsible for any errors in the execution of such bids.
4. **Lots with numbers followed by the symbol ° are offered subject to a confidential minimum final bid (“reserve”), below which the lot will not be sold. The absence of the symbol ° means that the lot is offered without a reserve.** In the absence of a reserve, the auctioneer has sole discretion to establish a minimum opening bid and may refuse an offer of less than half of the published estimate. Any lot that does not reach its reserve or opening bid requested by the auctioneer will be announced as “passed” and excluded from the prices realized lists after the sale. The Galleries may have a direct or indirect ownership interest in any or all lots in the sale resulting from an advance of monies or goods-in-trade or a guarantee of minimum net proceeds made by the Galleries to the seller.
5. Any lot, the description of which is obviously incorrect, is returnable, but only if the lot is returned within 14 days of receipt. All disputed lots must be returned intact with the original packing material. **The following lots may not be returned for any reason: Lots containing ten or more items; lots from buyers who have registered for the pre-sale exhibition or received lots by postal viewing, thereby having had the opportunity to inspect them before the sale; any lot described with “faults” or “defects” may not be returned because of any fault or defect. No illustrated lots may be returned because of centering, margins or other factors shown in the illustrations.**
6. Successful bidders, unless they have established credit with the Galleries prior to the sale, must make payment in full before the lots will be delivered. Buyers not known to the Galleries must make payment in full within three days from the date of sale. **The Galleries retain the right to demand a cash deposit from anyone prior to bidder registration and/or to demand payment at the time the lot is knocked down to the highest bidder, for any reason whatsoever.** In the event that any buyer refuses or fails to make payment in cash for any lot at the time it is knocked down to him, the auctioneer reserves the right to reoffer the lot immediately for sale to the highest bidder.

7. If the purchase price has not been paid within the time limit specified above, nor lots taken up within seven days from the date of sale, the lots will be resold by whatever means deemed appropriate by the Galleries, and any loss incurred from resale will be charged to the defaulting buyer. Any account more than thirty days in arrears will be subject to a late payment charge of 1 1/2% per month as long as the account remains in arrears. Any expenses incurred in securing payment from delinquent accounts will be charged to the defaulter. A fee of \$250.00 per check will be charged for each check returned for insufficient funds.

8. All lots are sold as genuine. **Any lot which is accompanied by an expert certificate (for U.S. items, the accepted authority is The Philatelic Foundation), dated within the past five years of the sale date, is sold “as is” and in accordance with the description on the certificate. Such lots may not be returned for any reason, including but not limited to a contrary certificate of opinion obtained after the sale.** Buyers who wish to obtain a certificate for any item that is not accompanied by a certificate dated within the past five years may do so, provided that the following conditions are met: (1) the purchase price must be paid in full, (2) the item must be submitted to an acceptable expertizing committee with a properly executed application form within 21 days of the sale, (3) a copy of the application form must be given to the Galleries, (4) in the event that an adverse opinion is received, the Galleries retain the right to resubmit the item on the buyer’s behalf for reconsideration, without time limit or other restrictions, (5) unless written notification to the contrary is received, items submitted for certification will be considered cleared 90 days from the date of sale, and (6) in the event any item is determined to be “not as described”, the buyer will be refunded the purchase price and the certification fee up to \$100.00 unless otherwise agreed.

9. Until paid for in full, all lots remain the property of the Galleries on behalf of the seller.

10. Agents executing bids on behalf of clients will be held responsible for all purchases made on behalf of clients unless otherwise arranged prior to the sale.

11. The buyer assumes all risk for delivery of purchased lots and agrees to pay for prescribed shipping costs (see back of Bid Form).

12. The bidder consents that any action or proceeding against it may be commenced and maintained in any court within the State of New York or in the United States District Court for the Southern District of New York, that the courts of the State of New York and United States District Court for the Southern District of New York shall have jurisdiction with respect to the subject matter hereof and the person of the bidder. The bidder agrees not to assert any defense to any action or proceeding initiated by Galleries based upon improper venue or inconvenient forum. The bidder agrees that any action brought by the bidder shall be commenced and maintained only in a Federal Court in the United States District Court for the Southern District of New York or the State Court in the county in which Galleries has its principal place of business in New York. These Terms and Conditions shall be governed by and construed in accordance with the substantive laws of the State of New York.

SCOTT R. TREPEL, Principal Auctioneer

Auctioneer’s License No. 795952  
N.Y.C. Department of Consumer Affairs  
80 Lafayette Street, New York, N.Y. 10013  
Telephone (212) 577-0111

*Revised 2/2000*

### Copyright Notice

This catalogue in all versions, printed and electronic, is protected by copyright. The descriptions, format, illustrations and information used herein may not be reprinted, distributed or copied in any form without the express written consent of Robert A. Siegel Auction Galleries. Application for permission may be made in writing.

© 2000, Robert A. Siegel Auction Galleries, Inc.

## Grading Terms, Abbreviations and Values Used in Descriptions

### Grade and Centering

Margin width, centering and gum are graded according to Scott Catalogue standards.







**Extremely Fine (EF):** Exceptionally large margins or near perfect centering. The term “Gem” describes condition that is the finest possible for the issue.

**Very Fine (VF):** Normal size margins for the issue and well-centered with the design a bit closer to one side.

**Fine (F):** Smaller than usual margins or noticeably off center. Pre-1890 issues may have the design touched in places.

**Very Good (VG):** Attractive appearance, but margins or perforations cut into the design.

**Good (G) or Average (Ave.):** Cut into or perfs far into design and usually with slight faults. This condition is generally acceptable for rarities, scarce multiples or stamps used on unusual covers.

Gum Categories:	MINT N.H.	ORIGINAL GUM (O.G.)				NO GUM
	 <b>Mint Never Hinged</b> <i>Free from any disturbance</i>	 <b>Lightly Hinged</b> <i>Faint impression of a removed hinge over a small area</i>	 <b>Hinge Mark or Remnant</b> <i>Prominent hinged spot with part or all of the hinge remaining</i>	 <b>Part o.g.</b> <i>Approximately half or more of the gum intact</i>	 <b>Small part o.g.</b> <i>Approximately less than half of the gum intact</i>	 <b>No gum</b> <i>Only if issued with gum</i>
Catalogue Symbol:	★★	★	★	★	★	(★)
PRE-1890 ISSUES	<i>Pre-1890 stamps in these categories trade at a premium over Scott value</i>			Scott Value for “O.G.”		Scott “No Gum” Values thru No. 218
1890-1935 ISSUES	Scott “Never Hinged” Values for Nos. 219-771	Scott Value for “O.G.” (Actual value will be affected by the degree of hinging)		<b>Disturbed Original Gum:</b> Gum showing noticeable effects of humidity, climate or hinging over more than half of the gum. The significance of gum disturbance in valuing a stamp in any of the Original Gum categories depends on the degree of disturbance, the rarity and normal gum condition of the issue and other variables affecting quality. For example, stamps issued in tropical climates are expected to have some		
1935 TO DATE	Scott Value for “Unused”					

### Covers

Minor nicks, short edge tears, flap tears and slight reduction at one side are normal conditions for 19th century envelopes. Folded letters should be expected to have at least one file fold. Light cleaning of covers and small mends along the edges are accepted forms of conservation. Unusual covers may have a common stamp with a slight crease or tiny tear. **These flaws exist in virtually all 19th century covers and are not always described. They are not grounds for return.**

### Catalogue Values and Estimates

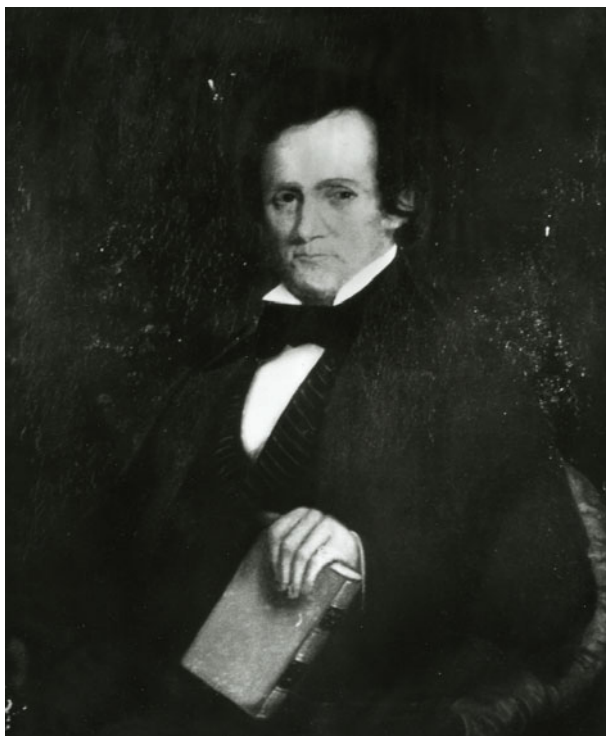
Unless otherwise noted, the currently available *Scott Catalogue* values are quoted in dollars with a decimal point. Other catalogues are often used for foreign countries or specialized areas and are referred to by their common name: *Stanley Gibbons* (SG), *Dietz*, *American Air Mail Catalogue* (AAMC), *Michel*, *Zumstein*, *Facit*, etc. Estimates are indicated with an “E.” and reflect our conservative valuation in dollars. Reserves will never exceed the low end of the estimate range; they will sometimes exceed Scott Catalogue value for stamps in Extremely Fine condition.

Because of certain pricing inconsistencies in the Scott Catalogue—for example, blocks that have no gum, the absence of premiums for Mint N.H. items, etc.—we cannot guarantee the accuracy of values quoted for multiples, specialized items and collection lots. We generally try to be conservative, but buyers may not return a lot because of a discrepancy in catalogue value due to Scott pricing inconsistencies.

### Symbols and Abbreviations (see chart above for gum symbols)

⊞	Block	E	Essay	pmk.	Postmark	No.	Scott Catalogue Number
⊞	Cover	P	Proof	cds	Circular Datestamp	hs	Handstamp
FC	Fancy Cancel	TC	Trial Color Proof	var.	Variety	ms.	Manuscript

## INTRODUCTION



*Dr. John L. Riddell, Postmaster of New Orleans*

NEW ORLEANS HAS ALWAYS OCCUPIED A PLACE THAT IS UNIQUE IN American history. The city's French and Creole background and its location on the country's most significant waterway give New Orleans its Continental character and pivotal role in the growth of the United States. During the Civil War, New Orleans was strategically critical to both sides, and the Confederacy's loss of the city to Federal forces in April 1862 was a crippling blow to the South, enabling the North to gain a foothold on the Mississippi River and control over the Gulf.

Dr. Hubert C. Skinner, a professor of earth sciences and New Orleans resident for several decades, is the leading collector and researcher of New Orleans postal history. This portion of his collection — focusing on the Civil War years from 1861 to 1865 — is the most comprehensive of its kind ever formed and received an International Large Gold at Ameripex. The Frederic J. Grant collection of New Orleans provisionals, sold at auction in March 1959, has historically been the most significant sale in this subject area, but the Dr. Skinner collection eclipses even that great offering.

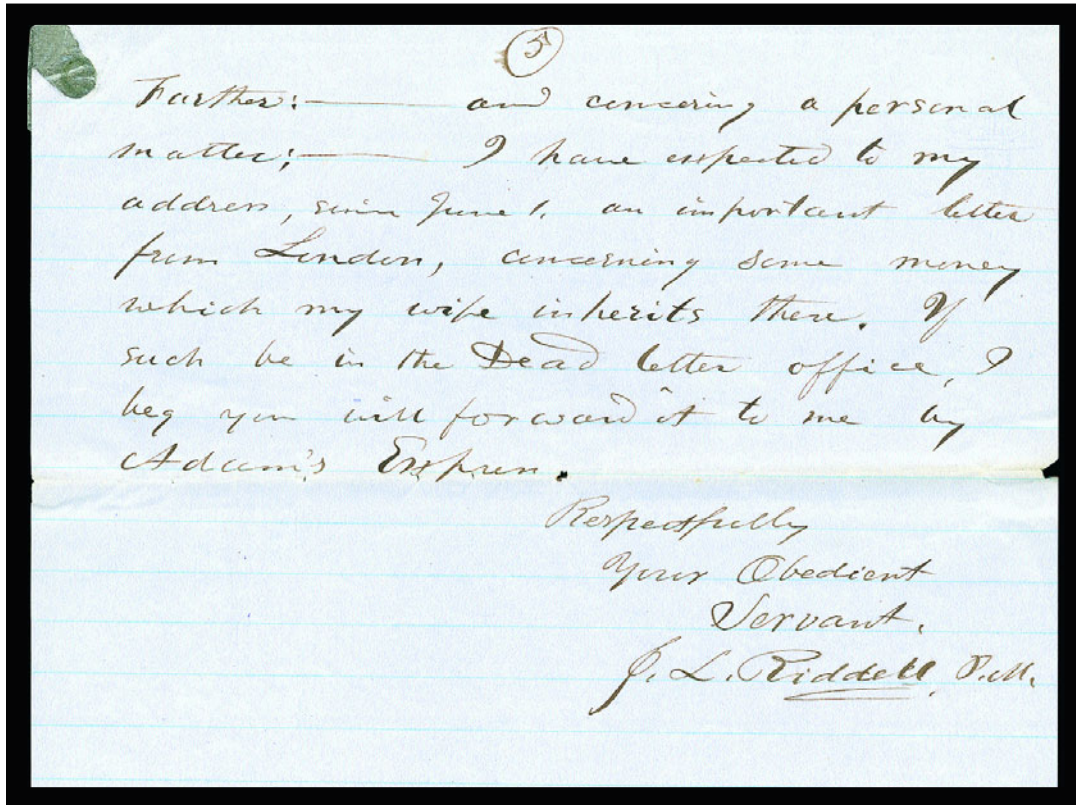
It is impossible to introduce New Orleans Civil War postal history without specifically mentioning Dr. John L. Riddell, the reluctant Confederate postmaster who issued his own stamp money and provisionals. Dr. Riddell was an educator, inventor, physician, chemist, botanist, geologist, physicist and prominent scientific author. Among his many accomplishments is the invention of the binocular microscope in 1851. He served as the Melter and Refiner for the United States Mint in New Orleans from 1839 to 1848, and as postmaster from 1860.

Dr. Skinner's collection is carefully balanced between the technical aspects of philately and the human stories of postal history, represented by numerous rarities and significant usages acquired through dedicated collecting and study over half a century. We are pleased to present this collection to the market and hope that the availability of so many rare or unique items inspires other collectors to embrace the city of New Orleans.

—SCOTT R. TREPEL

AFTERNOON SESSION (LOTS 3001-3228)  
THURSDAY, NOVEMBER 16, 2000, AT 1:30 P.M.

THE DR. HUBERT C. SKINNER COLLECTION OF  
NEW ORLEANS CIVIL WAR POSTAL HISTORY



3001EX

3001 **John L. Riddell Correspondence.** Three letters, first datelined "Univ. La. New Orleans, October 14, 1853" from Riddell to his young son, Edward, giving advice on how to become a better speller and encouraging him to keep "clean, tidy, dry and warm. Keep your hair and teeth clean. Wash your teeth well with a brush at least once a day. . . Do no mean action", other two datelined "New Orleans Post Office" Apr. 28 and Aug. 19, 1861, to Third Asst. Postmaster General A. N. Zevely, **reports for the first six months of 1861**, carefully recording post office returns and items returned to Washington D.C.

THE GROUP INCLUDES A HIGHLY SIGNIFICANT LETTER FROM POSTMASTER RIDDELL TO THIRD ASSISTANT POSTMASTER GENERAL ZEVELY, CAREFULLY EXPLAINING THE STATUS OF THE NEW ORLEANS POST OFFICE UNDER CONFEDERATE CONTROL.

The August 19 report includes this significant statement from Riddell, a reluctant Confederate postmaster: "All this has been done with the same good faith that has characterized my previous accounts; in the same manner as if the United States government had been still paramount in these parts. It is true, you have not that I am aware, formally authorized the payment by me, of the route mail agents, for the months specified in the general account. But as the sums set down are honestly due these poor men, I feel confident the payment will meet your approval. . . Since the 1st of June, when the Confederate States took charge of our postal affairs, no opportunity has presented itself of safely returning to you these [United States] stamps and envelopes. . . I have received no appointment as Confederate Postmaster, but in common with other Postmasters, was left to act under a general proclamation of Hon. J. H. Reagan, P.M. General of the Confederate States. A gentleman by the name of J. M. Reid has lately been appointed to this office, and in a few days I expect to be supplanted by him." Riddell goes on to ask if he could arrange for a bonfire, properly witnessed, to destroy stamps and envelopes on hand.

This significant correspondence provides insight into Dr. Riddell and the early period of the Confederate post office in New Orleans. . . . E. 1,000-1,500



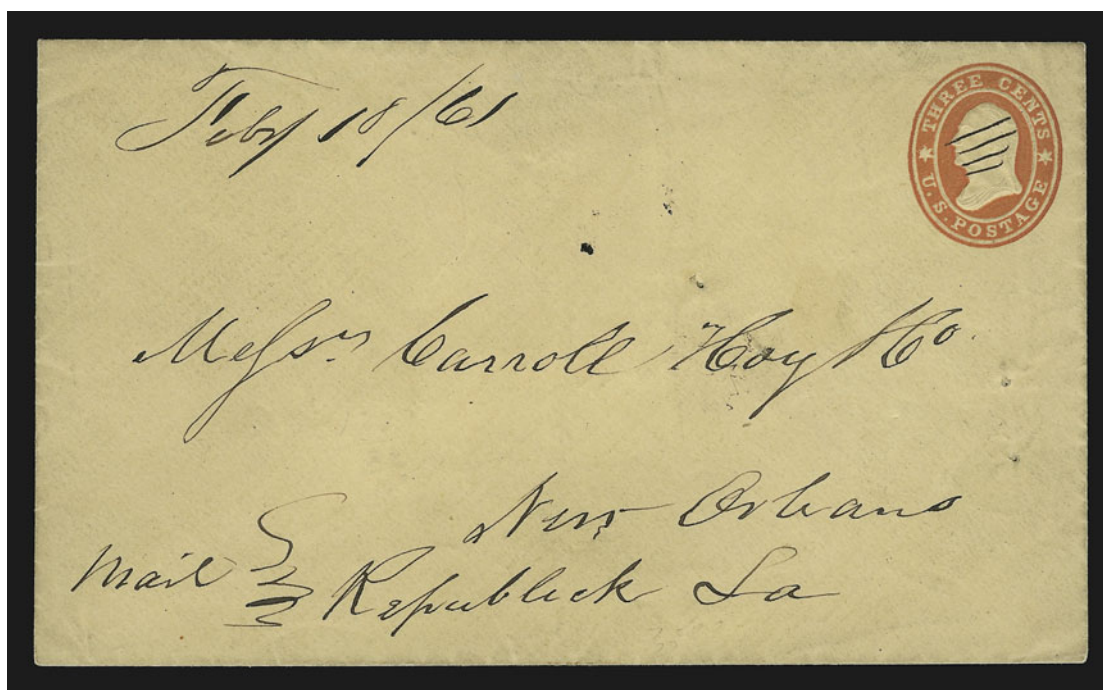
## NEW ORLEANS STAMP MONEY

- 3002 **1861 New Orleans Stamp Money, "One Cent", "Two Cents" and "Five Cents"**. Two of "One Cent" in light brown and black on yellow card, one signed "J. L. Riddell" (in his hand) and postal clerk "Ed. S. Rapier", other signed by postal clerk "L. S. Riddell" (his son, Sanford); "Two Cents" in olive and black on yellow card, signed by postal clerk "Ed. S. Rapier"; "Five Cents" in brown and black on pink card, signed "J. L. Riddell" (in his hand) and postal clerk "Ed. S. Rapier", each card has the blind impression of the "J. L. RIDDELL" silver mark, each is lightly creased, 2c has rounded corners, 5c has thins on back  
A REMARKABLE GROUP OF NEW ORLEANS STAMP MONEY CARDS, ISSUED BY POSTMASTER RIDDELL TO MAKE CHANGE AT THE POST OFFICE DURING A SHORTAGE OF COINS. VERY FEW EXIST.  
Ex Brown, Knapp, Grant, Freeland and Weill Brothers..... E. 4,000-5,000
- 3003 **1861 "One Cent" New Orleans Stamp Money**. Printed in light brown and black on yellow card, "J. L. RIDDELL" silver mark impressed in reddish ink, signed by postal clerk "Ed. S. Rapier", top part of back thinned, otherwise Very Fine and extremely rare..... E. 500-750
- 3004 **1861 "One Cent" New Orleans Stamp Money**. Printed in light brown and black on yellow card, "J. L. RIDDELL" silver mark impressed in reddish ink, signed by postal clerk "Ed. S. Rapier", Very Fine and extremely rare ..... E. 500-750

## INDEPENDENT AND CONFEDERATE STATE USAGE



- 3005 ☒ **New Orleans La. 29 Jan. (1861) — Independent Statehood.** Bold circular datestamp and “Steamship” in circle on folded cover from **Mexico to Aurillac, France**, Mexican merchant’s blue oval backstamp, ms. “22” rate and “Packet Anglais” endorsement, “New York Am. Pkt. Feb. 2” transit datestamp and “19” debit handstamp, “12” decimes due handstamp, French transits front and back, light vertical file fold, Extremely Fine, a rare Independent State usage to France and reported to be one of two such covers with a 22c rate (reduced 3c to eliminate double inland postage), ex Haas ..... E. 1,500-2,000



- 3006 ☒ **“Republic La.”** Manuscript address on 3c Red Star Die entire to Carroll Hoy & Co. in New Orleans, ms. “Feby. 18/61” postmark and matching pen strokes cancel 3c, usual filing pinholes, Very Fine, extremely rare example of the Second Republic title that applied to Louisiana during its brief period of independence prior to joining the Confederacy on Feb. 4, 1861 ..... E. 1,500-2,000

3007



3008

3009



3010

- 3007 ☒ **New Orleans La. 7 Feb. (1861).** Circular datestamp on 3c Red Star Die entire to New York, year-docketed on reverse, backflap removed, otherwise Very Fine, used three days after admission to the Confederacy ..... E. 200-300
- 3008 ☒ **New Orleans La. 9 Apr. (1861)** Bold circular datestamp on 3c Red Star Die entire to Denton Tex., dry goods merchant's embossed advertisement on backflap, light water-staining at edges and slightly reduced at left, Fine, Confederate Statehood usage, ex Gibson ..... E. 200-300
- 3009 ☒ **New Orleans La. Apr. 8, 1861.** Double-circle river-mail datestamp on 3c Red Nesbitt entire to Carroll, Hoy and Co. New Orleans, couple usual pinholes, Fine, the double-circle datestamp was used on mail received at the wharfside office ..... E. 300-400
- 3010 ☒ **New Orleans La. 3 May (1861).** Circular datestamp on 3c Red Star Die entire to New York City, Extremely Fine ..... E. 300-400



3013



3012



3011

- 3011 ☒ **N.O.U.S. City Post Mar. 25.** Usual lightly struck circular datestamp on 1861 inbound cover with **France 80c Rose (20)** tied by diamond grid and red "Br. Service" framed cancel, Paris datestamp, red "Boston Mar. 18 Paid 15" credit datestamp, cover has small flaws, otherwise Fine, rare inbound transatlantic usage with carrier service during Confederate Statehood..... E. 750-1,000
- 3012 ☒ **Incoming Foreign Mail to New Orleans.** 1861 stampless cover from Luebeck, Germany, "30 Boston Br. Pkt. Mar. 25" debit datestamp, Aachen and Hamburg transits, ms. "*per first steamer*" at top, ms. "*Answered 22 of April 61*" docketing at top right, overall toning, otherwise Fine inbound usage during Confederate Statehood ..... E. 300-400
- 3013 ☒ **New Orleans La. 14 Apr.** Bold strike of circular datestamp and "**Steamship**" in circle on blue folded cover from **Vera Cruz to London, England**, pencil "29" rate crossed out in ink, "**26**" debit handstamp (reduced 3c to eliminate double inland postage) and British ms. due marking, Vera Cruz merchant's blue oval handstamp, "New York Am. Pkt. Apr. 20" transit and "London May 4 61" receiving datestamp on back, light horizontal file folds, otherwise Very Fine, an outstanding cover from Mexico to Great Britain thru Confederate New Orleans and Union New York City ..... E. 750-1,000

## THRU-THE-LINES EXPRESS MAIL



3014

- 3014 ☒ **Adams Express Co. New-Orleans May 16 (1861).** Mostly bold circular datestamp on 3c Red Star Die entire to Blooming Groove N.Y., "New-York May 23" circular datestamp and grid cancel, ms. "2/" (two bits, or 25c) express company charge at top left, light bend across top, Very Fine, rare Adams usage from New Orleans to New York just prior to June 1st termination of mails ..... E. 1,000-1,500

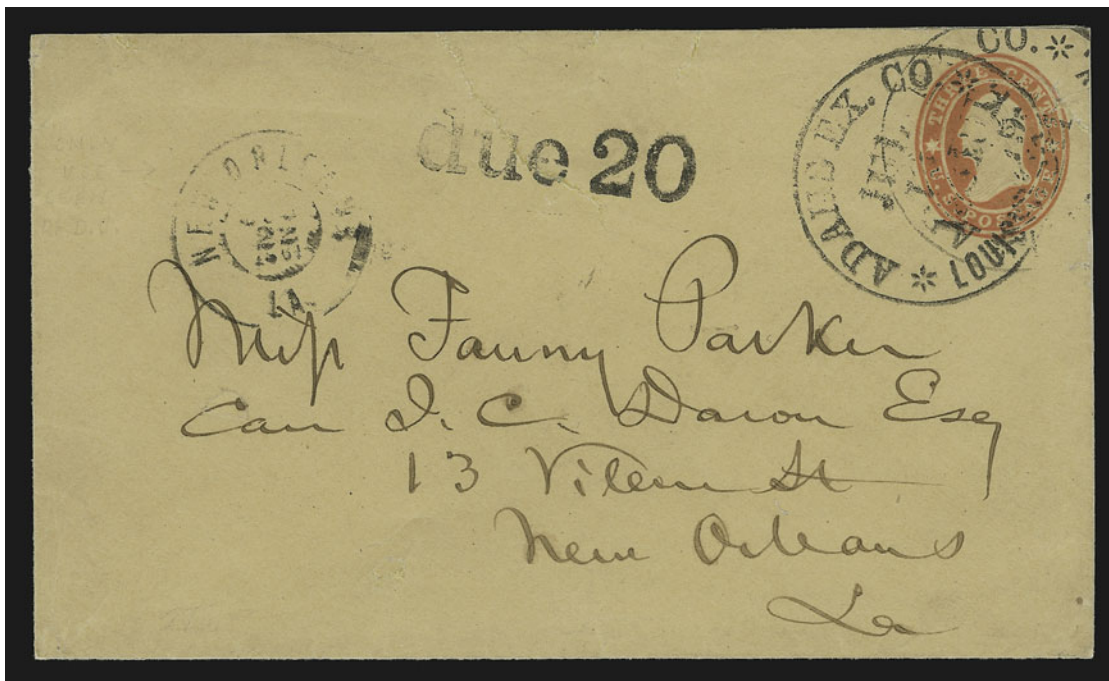


3015

- 3015 ☒ **Adams Express Co. New-Orleans Mar. 12 (1861).** Lightly inked but clear circular datestamp on 3c Nesbitt entire to Coventry Conn., pencil "By Stage tomorrow noon", torn open at left barely affecting endorsement and large tear on back, otherwise Very Fine, scarce New Orleans Adams marking on South-to-North express usage prior to suspension of mails on June 1 ..... E. 750-1,000



- 3016 ☒ **Adams Express Co. N.Y.** Blue double-circle handstamp on front and back, matching "Paid" in oval on 3c Red Star Die entire to Carroll Hoy & Co. New Orleans, small sealed tear at top, otherwise Very Fine, ex Knapp, Emerson, Shenfield, Antrim and Hollowbush ..... E. 500-750
- 3017 ☒ **Adams Express Company N.Y. April 1.** Blue double-circle datestamp ties 3c Dull Red (26), matching "Paid" oval on 3c Red Star Die paste-up front adhering to address panel from London, England, to New Orleans via New York City, red "Lombard Street Paid F2 Mr 16 61" circular datestamp and ms. "2/-" double rate, part of Star Die and stamp cut away, creased, nonetheless a rare use of Adams Express to convey a letter from England prior to the end of regular mail service on June 1, 1861 ..... E. 500-750

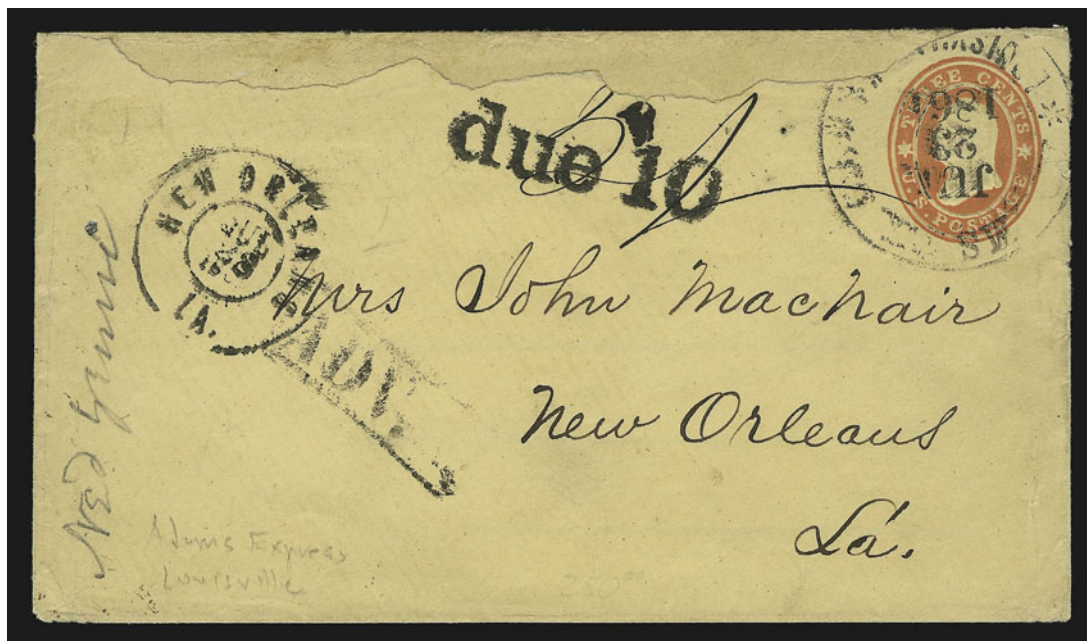


3018

- 3018 ☒ **Adams Ex. Co. \* Louisville, Ky. \* Jul. 19, 1861.** Double-struck circular datestamp on 3c Red Star Die entire to New Orleans street address, partly clear "New Orleans La. Jul. 22, 1861" double-circle datestamp and "due 20" straightline handstamp for double Confederate postage due, skillfully sealed tear into due marking, part of backflap restored and minor cosmetic improvements around edges

VERY FINE APPEARANCE. A RARE ADAMS EXPRESS THRU-THE-LINES COVER INTO NEW ORLEANS. THIS IS THE ONLY RECORDED EXAMPLE OF THE NEW ORLEANS "DUE 20".

Ex Knapp and Meroni..... E. 4,000-5,000



3019

- 3019 ☒ **Adams Ex. Co. \* Louisville Ky. \* Jul. 23, 1861.** Partly clear circular datestamp and ms. "2/-" express charge on 3c Red Star Die entire to New Orleans, boxed "ADV. ." with value removed handstamp, bold "due 10" straightline (for Confederate postage due) and "New Orleans La. Jul. 28, 1861" double-circle datestamp, top edge torn off when opened and repaired, still an extremely rare use of these New Orleans markings during the Confederate period..... E. 1,000-1,500



3020

3020 ☒ **Adams Ex. Co. \* Louisville, Ky. \* Jul. 8, 1861.** Mostly complete strike at lower left corner of Jul. 3, 1861 folded letter from New Orleans to New York City, ms. "D.H." applied by Adams agent to indicate no fee charged, **United States 1c Blue, Ty. I, and 5c Brown, Ty. II (18, 30)**, applied at Adams office in Louisville and tied by bold blue "Louisville Ky. Jul. 9, 1861" double-circle datestamp and grid, faint stain at upper left where we believe a pair of uncanceled 3c stamps was removed by Adams — 1c stamp has small corner fault

VERY FINE APPEARANCE. ONE OF TWO RECORDED THRU-THE-LINES EXPRESS COVERS WITH THE 5-CENT 1857-61 ISSUE AND THE ONLY ONE WITH A ONE-CENT 1857-61 STAMP.

The "D.H." marking on Adams Express Company covers always indicates that the letter was carried free of charge (it is said to represent the words "Dead Head"). Express covers with the normal charge are usually marked "2/-" (two bits, or 25c) or a multiple thereof. It is unclear why this letter was carried free by Adams, but the prepayment of United States postage was an absolute requirement. Because stamps affixed in the South were considered invalid by the U.S. post office, Adams Express covers (unless sent in an outer envelope) usually have a due marking or second valid franking, which was applied at Louisville. In this instance, the Adams clerk in Louisville probably saw no reason to lose money on the second franking, considering that the express fee was waived, so he removed a pair of 3c stamps from upper left and franked the cover with the 1c and 5c stamps from his own supply. By keeping the uncanceled stamps — contraband in a strict sense — he made an even exchange instead of losing six cents.

Ex Chase and Hollowbush (where acquired by Dr. Skinner)..... E. 7,500-10,000



3021

- 3021 ☒ **Adams Ex. Co. \* Louisville Ky. \* Aug. 14, 1861.** Bold circular datestamp on blue folded letter datelined New Orleans Aug. 10, 1861 to New York City, 3c Dull Red (26) tied by blue grid with matching "Louisville Ky. Aug. 15, 1861 " double-circle datestamp, horizontal file fold, Extremely Fine, carried from New Orleans by Adams Express via Louisville where it was placed in the regular U.S. mails ..... E. 1,000-1,500



3022

- 3022 ☒ **Adams Express Co. "Louisville Ky. Jun. 8, 1861"** blue double-circle datestamp, matching grid ties 3c Dull Red (26) on blue folded letter datelined "New Orleans May 30, 1861" to New York City, without an Adams Express Co. handstamp but from an established thru-the-lines correspondence (see previous lot), few light file folds affect stamp, otherwise Very Fine..... E. 200-300



3023

- 3023 ☒ **New Orleans La., 5c Red Brown on Bluish (62X4).** Oct. 4, 1861 folded letter — part-printed legal notice — originally franked with four 5c provisional stamps (one cut out from upper right and replaced with another stamp), used in combination with pair of **United States 3c Dull Red (26)**, all original stamps tied together by three strikes of “Paid” cancel, “New Orleans La. 6 Oct.” circular datestamp also ties two 5c stamps, ms. “Due 6 cts.” for U.S. postage — demonetized 3c 1857 pair not recognized — with significant note written on inside panel, which reads: “*Notices of Protest similar to the within to [list of names] by me received this 12 April 1862 and placed in the Post Office at Georgetown Ky. Postage paid & in time for next mail. Noah Spears NPLC[?].*”, files folds, minor stamp faults

A REMARKABLE THRU-THE-LINES USAGE FROM NEW ORLEANS TO GEORGETOWN, KENTUCKY, CARRIED WELL AFTER MAIL EXCHANGE BETWEEN THE NORTH AND SOUTH WAS TERMINATED.

Postmaster General Blair’s May 27 order to stop all mail from the North to disloyal Southern states was less explicit in dealing with mail from the South to loyal states. With the suspension of government mail exchange between Louisville and Nashville on or about June 8, the express companies assumed the primary role in carrying letters across the lines. Such service was outlawed with the Federal ban on all commerce and exchange on August 26. This letter and other similar notices — as described in the contemporary endorsement — were sent from New Orleans to Georgetown, Kentucky, on October 4, 1861. The sender evidently expected that the double Confederate postage and double United States postage would assure its delivery. However, not only were the U.S. stamps invalid, the express companies were no longer carrying mail across the lines. It is unclear how the letter reached Noah Spears, nor do we know his function.

The vandalism in removing one of the original provisional stamps from the corner is a regrettable occurrence; however, this artifact of Civil War postal history is essentially unique, which lessens the impact of any flaws.

Ex Brown, Knapp, Brooks and Haas. .... E. 7,500-10,000

## ANTONIO COSTA'S EXPRESS



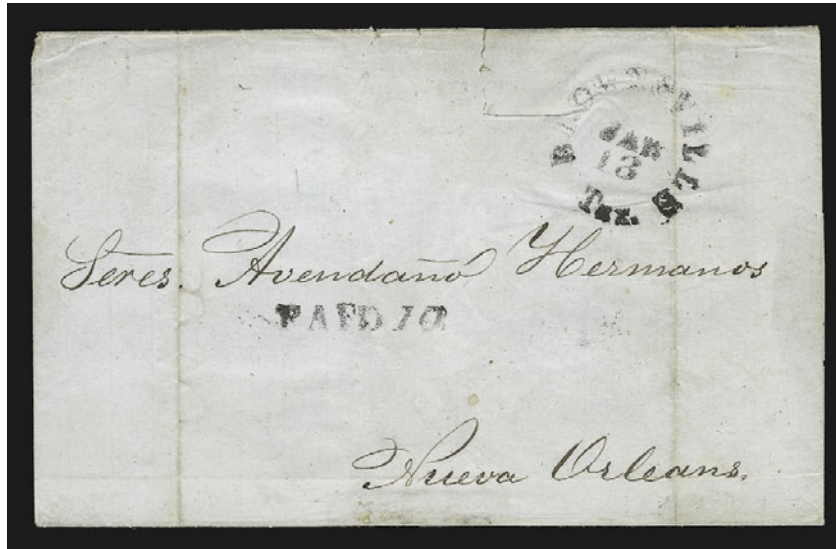
3024

- 3024 ☒ **Antonio Costa's Express.** Aug. 16, 1861 folded letter from Baring Brothers in London, England, to E. F. Lavillebeuvre in New Orleans, inside of letter routed "*pr Asia*", blue "J. & J. Prom & Co. \* Tampico \*" forwarder's oval handstamp, ms. "10" (indicating amount of Confederate postage required) beneath 10c Dark Blue, Hoyer & Ludwig (2b), three large margins, in at top, tied by "Brownsville Tex. Feb. 24" (1862) rimless circular dates-tamp, stamp creased by file fold, small fault at bottom right corner, lifted and reattached slightly out of original position

A FINE AND EXTREMELY RARE EXAMPLE OF TRANSATLANTIC MAIL CARRIED THRU THE GULF BLOCKADE DURING THE PERIOD WHEN COSTA'S EXPRESS WAS IN OPERATION.

Costa's Express operated briefly between October 1861 into early 1862. This cover falls into that period. Later thru-the-lines covers sent via Matamoros and Brownsville Tex. have appearance similar to this cover, but they should not be confused with this extremely rare usage.

Illustrated in Huber and Wagner *The Great Mail* (p. 153). ..... E. 3,000-4,000



3025

- 3025 **Antonio Costa's Express.** Greenish folded cover from Monterey, Mexico, to New Orleans via Brownsville Tex., "Brownsville Tex. Jan. 13" (1862) datestamp and "Paid 10" straightline handstamp, docketed "1862, Louis G. Coindreau, Monterey Enero 7, Rda. 31, Cda. Abril 10" — indicating that the letter was dated at Monterey on Jan. 7, 1862, and was received in New Orleans on Jan. 31 — couple vertical file folds, few sealed edge tears

FINE AND EXTREMELY RARE EXAMPLE OF MAIL CARRIED ACROSS THE MEXICAN BORDER INTO CONFEDERATE TEXAS, THEN BY COSTA'S EXPRESS TO NEW ORLEANS.

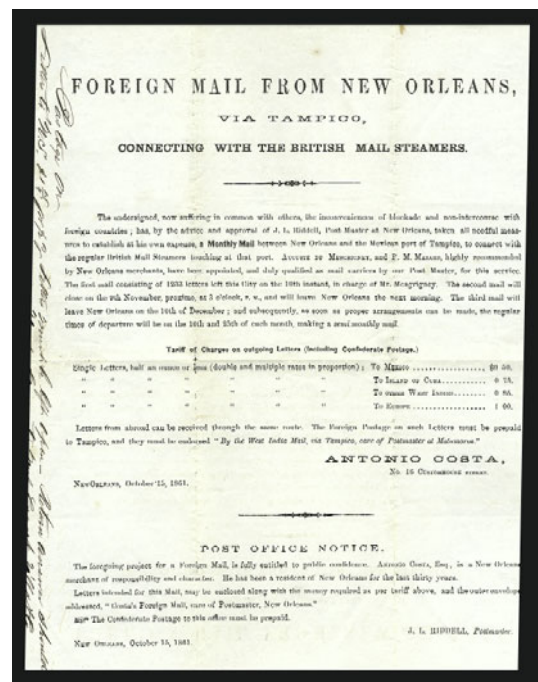
Antonio Costa's express operated from October 1861 until early 1862. No markings were used, but covers carried from Mexico to New Orleans via Brownsville Tex. are considered to have been carried by Costa when dated in the proper time period. Very few exist. Later cross-border covers carried after Costa's Express ceased to exist were conveyed by other means.

Ex MacBride..... E. 1,500-2,000

- 3026 **Antonio Costa's Express.** One-page printed circular from Antonio Costa at 15 Customhouse Street with sub-text from Postmaster J. L. Riddell, dated October 15, 1861, announcing "Foreign Mail from New Orleans, via Tampico, Connecting with the British Mail Steamers", stating that one mail carrier took 1,233 letters on October 10th in the first of bimonthly runs, listing fees and providing instructions that the letters must be endorsed "By the West India Mail, via Tampico, care of Postmaster at Matamoros", Postmaster Riddell's printed sub-text states "Letters intended for this Mail, may be enclosed along with the money required as per tariff above, and the outer envelope addressed, 'Costa's Foreign Mail, care of Postmaster, New Orleans'.", additional manuscript note in left margin reads "Postage on Letters to U.S. \$1.15 pr 1/2 oz., Letters must be left open — Return answer should be under cover to Mess. Loport Villa & Co. Havana", folded with only very slight wear

AN IMPORTANT HISTORICAL DOCUMENT ANNOUNCING COSTA'S EXPRESS, WHICH EXISTED BRIEFLY FROM OCTOBER 1861 UNTIL EARLY 1862.

This circular was originally enclosed in a folded letter from Rotterdam to James Thomas in Richmond Va., dated December 27, 1861, which was carried into New Orleans and forwarded from there on March 15 by Warnecken & Co. with two 5c Green stamps. The circular and letter have been separated for many years, but the two were discussed in an article by Thomas Parks in *Stamps* magazine (Apr. 9, 1966)..... E. 1,000-1,500



3026

## COVERT MAIL ROUTES

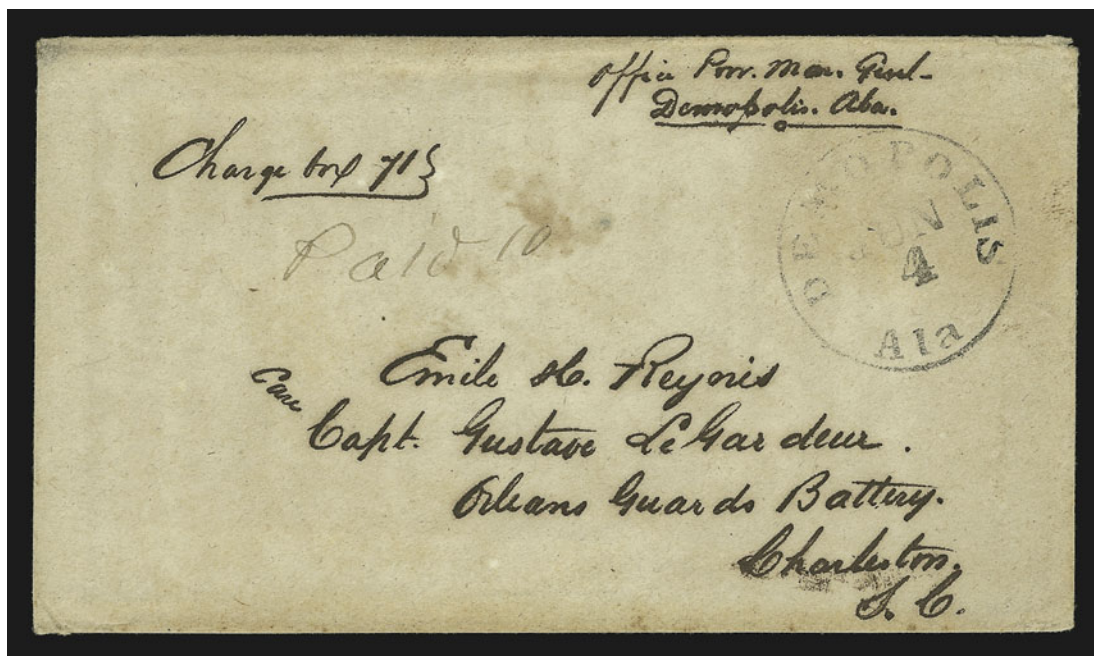


3027

- 3027 ☒ **“Through Kindness of Judge Jones”**. Sender’s manuscript notation at lower left of red and blue **8-Star Confederate Flag Patriotic** cover smuggled out of New Orleans by Judge Jones, addressed from Mrs. John Perkins to her husband in the Confederate Congress in Richmond Va., with 5c Blue, Local (7) vertical pair tied by “Richmond Va. Jun. 22” (ca. 1863) circular datestamp, drop rate overpaid — Mrs. Perkins probably affixed the stamps in New Orleans, not knowing the Judge would hand-carry the cover all the way to Richmond

VERY FINE. EXTREMELY RARE EXAMPLE OF MAIL SMUGGLED FROM FEDERAL-OCCUPIED NEW ORLEANS.

After New Orleans surrendered to Federal forces in April 1862 and with Maj. Gen. Butler’s ever-tightening grip on the city, various routes and means were used to carry mail from New Orleans residents to correspondents in the Confederacy, although such communication was a criminal act. In May 1863, Gen. Nathaniel P. Banks, Butler’s successor, ordered the deportation of all registered enemies of the United States residing in New Orleans (primarily those who refused to take the oath of allegiance). More than 700 families were forced to leave under miserable conditions. In June 1863, the Louisiana Relief Committee was organized to provide food, shelter and medicine to the mass of refugees. Another of its functions was to maintain a covert mail route between New Orleans and Mobile. The cover offered here was probably carried out of New Orleans in early June 1863, during the mass deportation, but before the Louisiana Relief Committee route was formally established..... E. 2,000-3,000



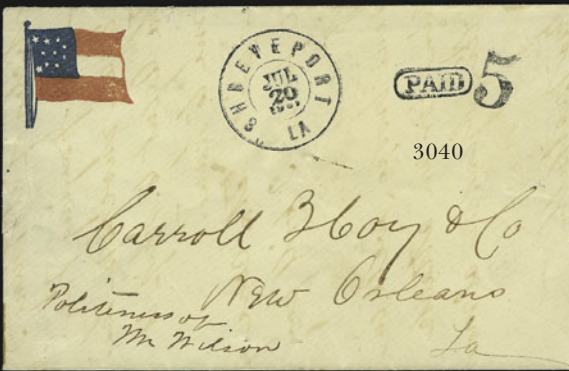
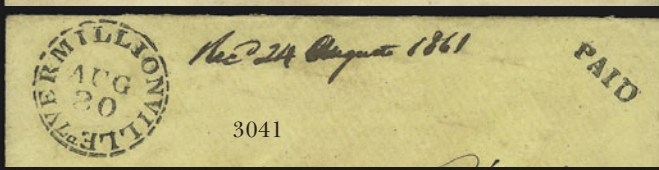
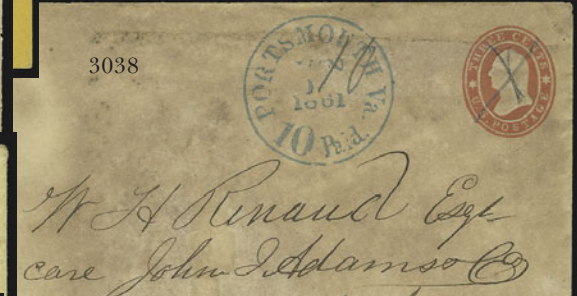
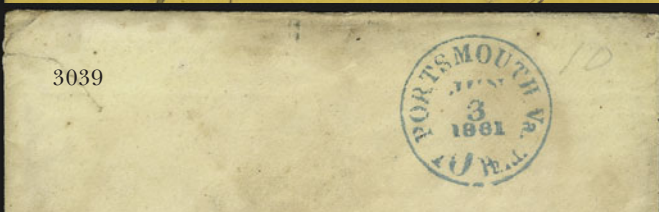
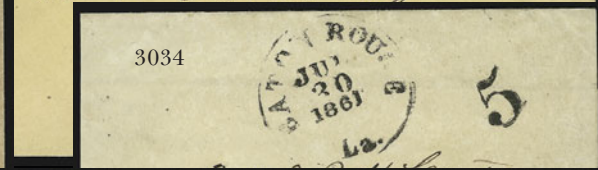
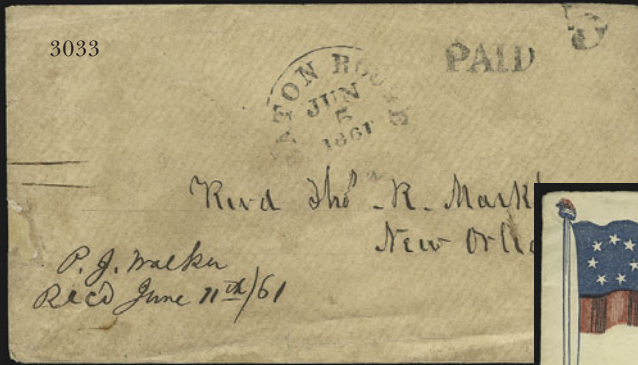
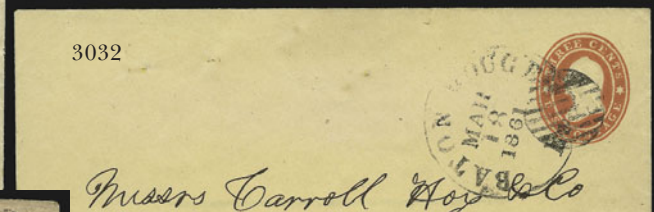
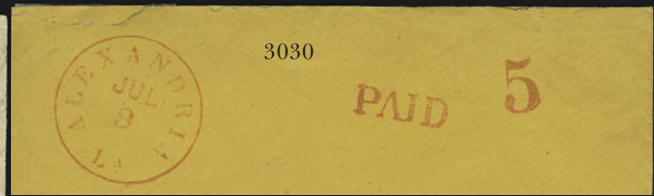
3028

- 3028 ☒ **Smuggled Mail from Federal-Occupied New Orleans.** Brown cover addressed to “Emile H. Reynes, care Capt. Gustave LeGardeur, Orleans Guards Battery, Charleston S.C.”, with sender’s directive “Office Prov. Mar. Genl Demopolis, Ala.” and “Charge box 71”, “Demopolis Ala. Jun. 4” (ca. 1863) circular datestamp and ms. “Paid 10”, Very Fine, an extremely rare cover from the well-known Reynes correspondence — the sender used covert means to carry mail from Federal-occupied New Orleans to the Confederate Provost Marshal at Demopolis, where the letter entered the mails and 10c postage was charged to a box account (see historical note in lot 3027)..... E. 1,500-2,000



3029

- 3029 ☒ **10c Blue, Die B (12).** Huge margins to just touching, bit irregular at top left, tied by red “Alexandria La. Feb. 11” circular datestamp on blue Jan. 8, 1864 folded letter from New Orleans to Jefferson Tex., letter with staining at left (not visible when folded), Very Fine, rare example of mail smuggled out of New Orleans and carried by Trans-Mississippi courier (or express)..... E. 500-750

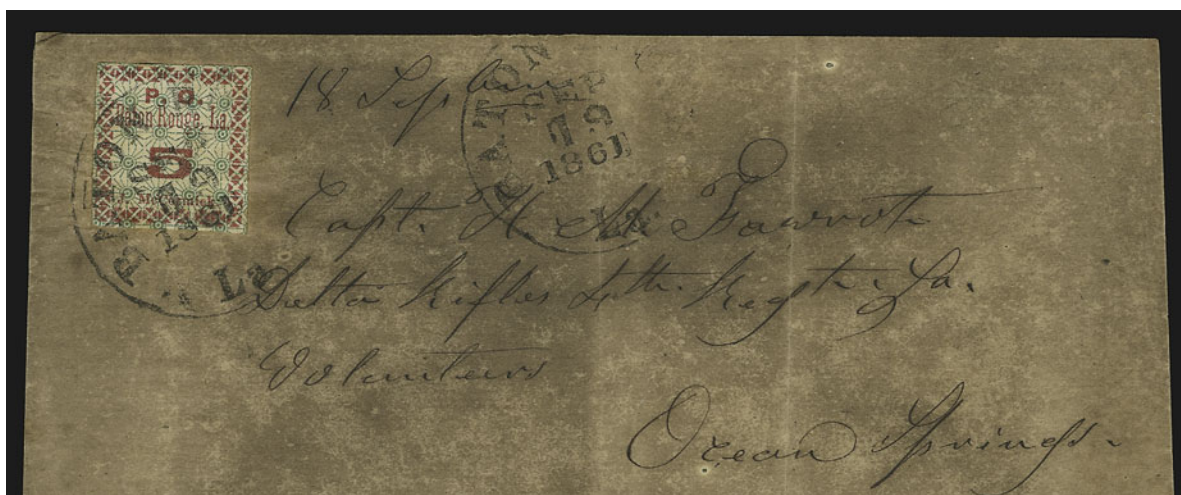


CONFEDERATE COVERS TO NEW ORLEANS

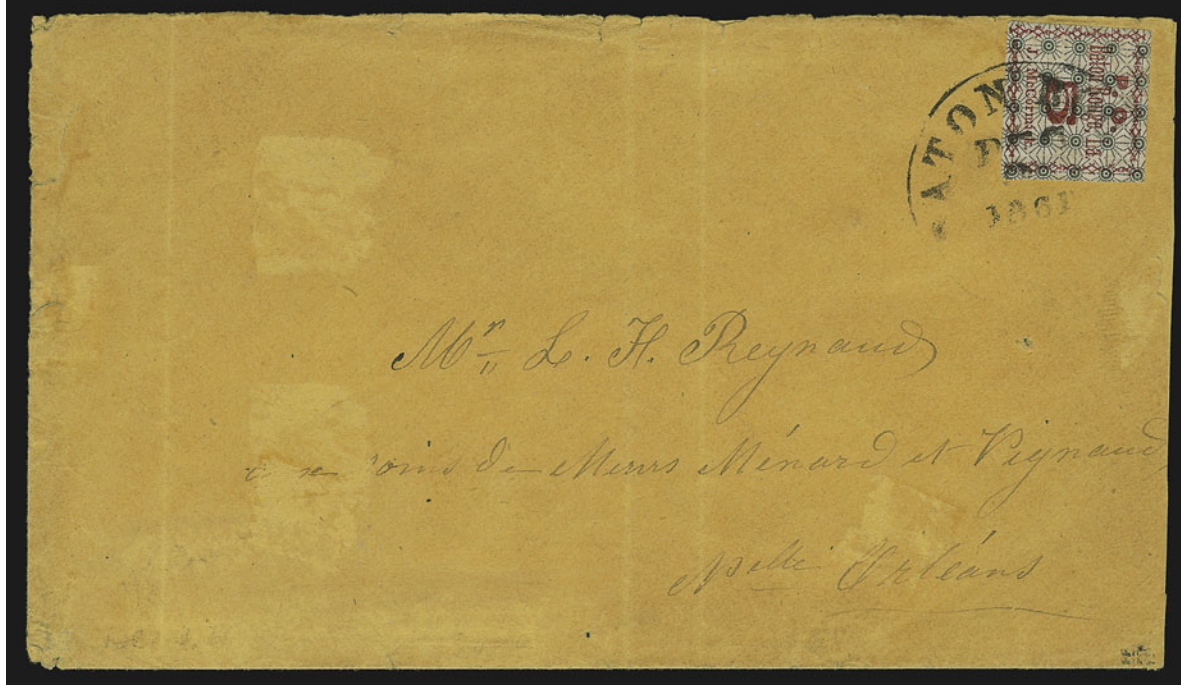
- 3030 ☒ **Alexandria La. Jul. 9 (1861).** Well-struck circular datestamp in **red**, matching “Paid” and “5” handstamps on orange cover to Carroll Hoy & Co. New Orleans, small sealed tear at top left, otherwise Extremely Fine..... E. 100-150
- 3031 ☒ **Baton Rouge La. Feb. 12, 1861.** Bold circular datestamp with grid tying 3c Dull Red (26) on folded cover to New Orleans, minor splits along folds sensibly reinforced, otherwise Very Fine..... E. 300-400
- 3032 ☒ **Baton Rouge La. Mar. 18, 1861.** Circular datestamp and grid cancels 3c Red Star Die entire to Carroll Hoy & Co. New Orleans, Very Fine and choice Independent State usage, ex Judd..... E. 200-300
- 3033 ☒ **Baton Rouge La. Jun. 5, 1861.** Partly clear circular datestamp, matching “Paid” and “5” handstamps on cover to New Orleans, small repair at left, otherwise Very Fine..... E. 100-150
- 3034 ☒ **Baton Rouge La. Jul. 30, 1861.** Clear strike with matching “5” **due handstamp** on small folded cover to New Orleans, Extremely Fine, rare illegal unpaid usage..... E. 150-200
- 3035 ☒ **La Grange Tex. May 6 (1861).** Circular datestamp, grid cancel ties 3c Dull Red (26), natural s.e. at left, on red and blue **7-Star Confederate Flag Patriotic** cover to New Orleans, roughly opened at top with repairs, otherwise Fine..... E. 400-500
- 3036 ☒ **Natchez Miss. Jun. 12, 1861.** Clear circular datestamp over blue pencil “5”, “Paid 5” straightline handstamp on buff cover to Carroll Hoy & Co. New Orleans, small part of backflap removed and usual filing pinholes, Very Fine, ex Judd..... E. 200-300
- 3037 ☒ **Petersburg Va. Mar. 25 (1861).** Blue circular datestamp, matching grid cancel on 3c Red Star Die entire to Mrs. John Perkins, Ashwood (Plantation) P.O., Tensas Parish La., usual minor edge wear and wrinkles, otherwise Fine, John Perkins was a member of the Confederate Congress..... E. 200-300
- 3038 ☒ **Portsmouth Va., 10 Paid, Jun. 1? 1861.** Blue circular datestamp with integral rate over ms. “10” rate, **possibly June 1st date** — First Day of the Confederate Postal System — on 3c Red Star Die entire to New Orleans, pencil “X” over obsolete 3c, age toned, backflap reattached, otherwise Fine ..... E. 400-500
- 3039 ☒ **Portsmouth Va., 10 Paid, Jun. 3, 1861.** Well-struck circular datestamp in blue, pencil “10” rate on cover to New Orleans, cover with soiling and small insignificant tear at top left, Fine, a very early date — same correspondence as potential June 1st cover offered in lot 3038 ..... E. 300-400
- 3040 ☒ **Shreveport La. Jul. 20, 1861.** Bold double-circle datestamp, matching “Paid” in oval and “5” handstamps on red and blue **10-Star Confederate Flag Patriotic** cover to Carroll Hoy & Co. New Orleans, stars were added to the top left and bottom left of the blue portion of the flag to transform this 8-star design into a 10-star design, lightened offset of ms. on cover, otherwise Extremely Fine, a beautiful 10-star patriotic cover, ex Haas..... E. 1,000-1,500
- 3041 ☒ **Vermillionville La. Aug. 20 (1861).** Boldly struck dashed circular datestamp and “Paid” straightline on yellow cover to New Orleans, ms. receipt docketing, light soiling, Very Fine, ex Haas ..... E. 400-500
- 3042 ☒ **Vicksburg Miss. Apr. 24 (1861).** Double-circle datestamp, matching grid cancel on 3c Dull Red (26), pieces out, on **Jefferson Davis Medallion Patriotic** cover to New Orleans, stamp faults, otherwise Fine, rare Davis medallion design in black..... E. 1,000-1,500

POSTMASTERS' PROVISIONALS USED TO NEW ORLEANS

3043



3044



- 3043 ☒ **Baton Rouge La., 5c Green & Carmine, Maltese Cross Border (11X2).** Full even margins all around, tied by "Baton Rouge La. Sep. 19, 1861" circular datestamp on brown cover to Capt. H.M. Favrot, Ocean Springs, second strike to right, overall age toning and couple vertical file folds clear of stamp, Very Fine stamp, ex Ashbrook, Hollowbush, signed Ashbrook ..... 2,750.00

- 3044 ☒ **Baton Rouge La., 5c Green & Carmine, Criss-Cross Border (11X3).** Full even margins all around, tied by "Baton Rouge La. Dec. 9, 1861" circular datestamp on buff cover to L. H. Reynaud of New Orleans, cover has minor scuff spots and edge wear, vertical folds well clear of stamp, most of backflap removed

EXTREMELY FINE STAMP ON AN ATTRACTIVE COVER. ONLY ELEVEN COVERS WITH THE BATON ROUGE 5-CENT CROSS-CROSS BORDER STAMP ARE RECORDED — THIS IS ONE OF TWO WITH A FOUR-MARGIN STAMP.

Dated examples indicate that the 5c criss-cross border stamp was produced during a second printing circa November 1861. Crown records only eleven covers, all of which are single frankings, and our records reflect the same count. Only two covers have four-margin stamps, and almost all covers have minor faults or flaps removed.

Ex Caspary. .... 10,000.00



3045

- 3045 ☒ **Memphis Tenn., 5c Red (56X2).** Huge sheet margin at bottom, large margins at left but cut in deeply at right, tied by "Memphis Ten. Nov. 20, 1861" circular datestamp on small cover to New Orleans, "**N.O.U.S. City Post Nov. 22**" circular datestamp — struck much more clearly than usual at this late period of use — street location "*Barron St. Julia & St. Joseph*" written by carrier department at lower left, stamp has negligible corner crease in margin from placement over edge of cover

VERY FINE. THIS IS THE ONLY RECORDED COVER WITH A CONFEDERATE POSTMASTER'S PROVISIONAL FROM OUTSIDE NEW ORLEANS THAT WAS DELIVERED TO A STREET ADDRESS AND DATESTAMPED BY THE N.O.U.S. CITY POST.

The 2c fee for delivery was presumably paid in cash by the addressee.

Ex Semsrott ..... E. 2,000-3,000



3046

- 3046 ☒ **Mobile Ala., 5c Blue (58X2).** Full to large margins all around, tied by "Mobile Ala. Jul. 21, 1861" double-circle datestamp on cover to New Orleans with **green illustrated cameo corner card** for Randall & Williams, Booksellers & Stationers, repaired tears at top clear of stamp, looks Extremely Fine, ex Haas ..... E. 1,500-2,000

## INTRODUCTION TO NEW ORLEANS POSTMASTER'S PROVISIONALS

DR. RIDDELL FACED THE SAME PROBLEM ALL CONFEDERATE POSTMASTERS faced on June 1, 1861, when the Confederate government assumed control over the postal system in seceded states. United States stamps were no longer valid, and there were no Confederate stamps to replace them (the first issue did not reach post offices until October). Coins were becoming scarce as the public hoarded specie. Without stamps to be used for prepayment or coins to make change at the post office window, provisional means were necessary to maintain normal activities until the government stamps were received (and even then, shortages required provisionals).

On June 6, Postmaster Riddell placed an order for stamps with John V. Childs, an engraver and printer located at 10 Camp Street. The 5c stamps were delivered on June 12, and one cover is recorded with a June 12 datestamp. 2c stamps were printed in red from a plate without the imprint; but these were evidently withheld from sale until January 1862. The 2c stamps in blue were printed from plates with the imprint, and these were issued in late June or early July. Although 10c stamps were initially ordered, they were not printed.

The stereotype plate of 40 subjects was arranged in five rows of eight. Imprints at the top and bottom of the 5c sheet read "Usable exclusively in the New Orleans Post Office". On the 2c Blue sheet, a similar imprint appears at top and a three-line imprint at bottom explains the rates paid by a 2c stamp. The "exclusively" imprint is thought to have been added to the plates after Postmaster Riddell received complaints from other postmasters about attempts to use the stamps outside New Orleans.

The adhesive stamps were issued as follows (dates from Dr. Skinner's 1978 *Congress Book* article):

	Recorded Dates of Use	
	Earliest	Latest
62X2, 2c Red (1st Printing)	Jan. 6, 1862	Apr. 4, 1862
62X1, 2c Blue (2nd Printing)	Jul. 14, 1861	Feb. 22, 1862
62X3, 5c Brown on White (1st Printing)	Jun. 12, 1861	Aug. 17, 1861
62X3b, 5c Ocher on White (1st Printing)	Jun. 18, 1861	Sep. 2, 1861
62X4, 5c Red Brown on Bluish (2nd Printing)	Aug. 20, 1861	Feb. 12, 1862
62X5, 5c Yellow Brown on Off-White (3rd Printing)	Dec. 4, 1861	Jan. 1, 1862
62X6-62X7, 5c Red error on White or Bluish	Sep. 17, 1861	—

In addition to adhesive stamps, envelopes were handstamped with markings indicating prepayment. These are recognized as provisional entires in the Scott Catalogue, which lists them as 62XU1 (5c), 62XU2 (10c), and 62XU3 (2c). The 5c and 10c entires have the "J. L. RIDDELL, P.M." straightline control handstamp; the 2c does not. It appears that some of the entires were prepared from empty envelopes and sold in advance of use (see lots 3156 and 3158); others were handstamped at the wharfside post office when presented for mailing.

The New Orleans provisionals exist in large numbers relative to other post offices' stamps. The variety of New Orleans provisional printings and postal usages enable collectors to form in-depth collections. For example, in the Dr. Skinner collection, we have the following significant items:

- The only color error in Confederate philately—the 5c Red (lot 3154), six known
- The only 2c and 5c Confederate provisional combination cover (lot 3060)
- The only 2c carrier plus 2c drop-rate cover with provisional stamps (lot 3061)
- The only 2c printed-on-both-sides error (lot 3062)
- The only 5c printed-on-both-sides error on cover (lot 3140)
- The only New Orleans provisional and General Issue combination (lot 3123)

POSTMASTER'S PROVISIONALS



3047

3047 ☒ **New Orleans La. Jun. 8, 1861.** Double-circle datestamp in red on Jun. 8, 1861 folded prices current list to St. Joseph La., ms. "15c/Pd./J.L.R(iddell)/P.M." provisional marking at top, sender's ms. "Iberville" steamboat-name endorsement at bottom, reinforced horizontal split along file fold clear of markings

VERY FINE STRIKE OF THE RED DOUBLE-CIRCLE DATESTAMP AND THE ONLY RECORDED EXAMPLE OF RIDDELL'S MANUSCRIPT 15-CENT PROVISIONAL, USED PRIOR TO THE JUNE 12TH ISSUE DATE OF THE ADHESIVE PROVISIONALS.

With the commencement of the Confederate postal system on June 6, 1861, Postmaster Riddell found himself without stamps or a sufficient supply of small coins to make change for cash payments at the post office. On June 6, Riddell contacted John V. Childs, a local printer and engraver, and ordered stamps for immediate delivery. The stamps were delivered and placed on sale on June 12 (a first day cover is recorded). Between June 1 and 12, there are very few covers to show how Riddell handled mail. This remarkable cover, with the red double-circle datestamp (three reported covers — all handled personally by Riddell in early June) and the 15c provisional applied and initialed by Riddell (unique), is evidence of the temporary measures to which Riddell resorted until his provisional stamps were printed.

Illustrated in Huber and Wagner's *The Great Mail* (p. 152). Ex Freeland. ....  
..... E. 2,000-3,000

2-CENT BLUE (SECOND PRINTING)



3048

- 3048 (★) 田 **New Orleans La., 2c Blue (62X1).** Block of four, Positions 7-8/15-16, unused (no gum), full to large margins all around with traces of adjoining stamp at bottom and **sheet margin at top right**, few horizontal creases mostly between stamps, small faint stain spots and natural inclusions

VERY FINE APPEARANCE. THIS IS THE LARGEST RECORDED MULTIPLE OF THE NEW ORLEANS 2-CENT BLUE POSTMASTER'S PROVISIONAL.

Our records contain just one other block, which is seriously defective. This block is illustrated in Dr. Skinner's 1978 *Congress Book* article. Ex Caspary, Freeland and Weill 6,500.00

- 3049 (★) **New Orleans La., 2c Blue (62X1).** Position 2, large to huge margins with **part imprint at top**, unused (no gum), bright color, thin spots in margin and at center, Very Fine appearance, one of two recorded examples of the 2c Blue with top imprint and the only unused imprint example, ex Caspary ..... E. 300-400



3049



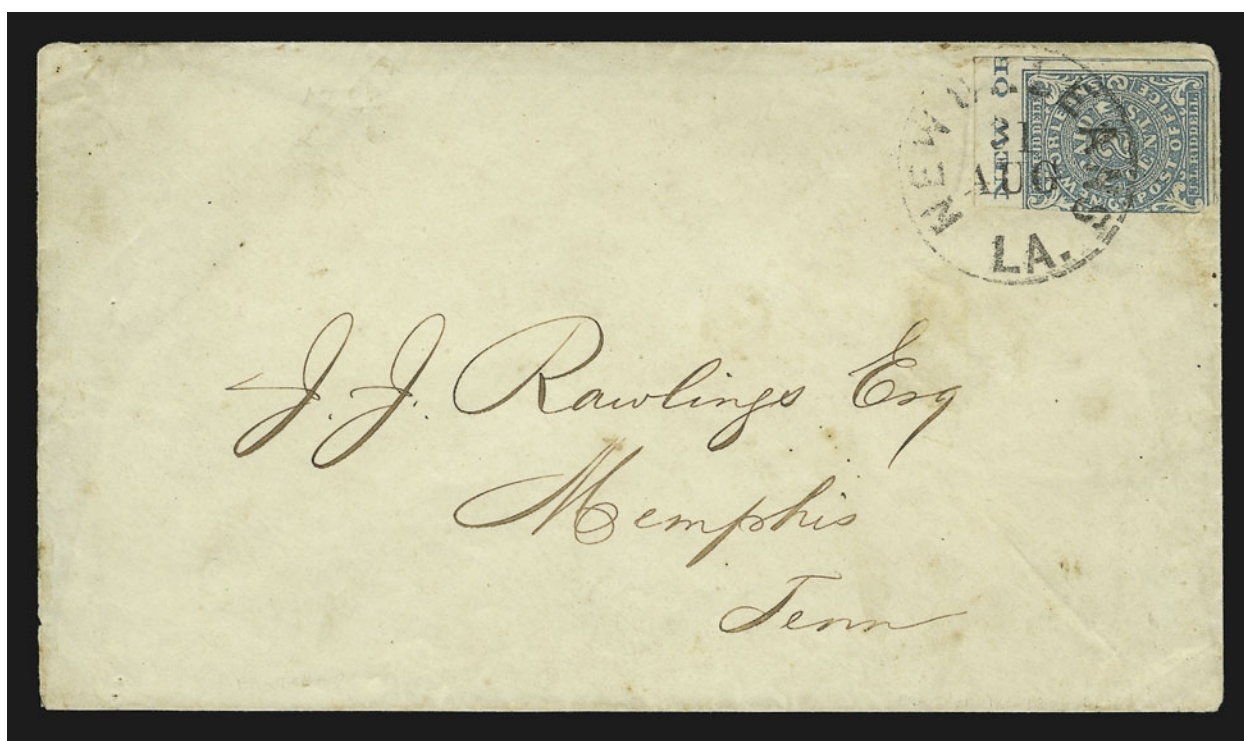
3050

- 3050 ★ **New Orleans La., 2c Blue (62X1).** Vertical pair, Positions 27/35, large margins with traces of adjoining stamps at left and **part three-line imprint at bottom**, just clear at top right, original gum, tiny h.r., horizontal creases thru top stamp, between stamps and in margin where it ends in small paper breaks, otherwise Very Fine, one of two recorded examples of the 2c Blue with bottom imprint, ex Caspary ..... E. 400-500

- 3051 **New Orleans La., 2c Blue (62X1).** Position 3, full to large margins with **part imprint at top**, light New Orleans circular datestamp
- EXTREMELY FINE. THE FINER OF TWO RECORDED USED EXAMPLES OF THE 2-CENT BLUE WITH IMPRINT.
- The other used 2c Blue with imprint is found on the cover offered in lot 3052. This stamp is illustrated in Dr. Skinner's study in the 1978 *Congress Book*.
- Ex Grant ..... E. 1,000-1,500



3051



3052

- 3052 ☒ **New Orleans La., 2c Blue (62X1).** Position 5, top sheet margin with **part imprint "NEW OR(LEANS)"** and large margins at right and bottom, slightly in along left, light shade, tied by "New Orleans La. 31 Aug." (1861) circular datestamp on unsealed cover to Memphis Tenn.
- FINE STAMP AND VERY FINE COVER. ONE OF TWO RECORDED USED IMPRINT COPIES OF THE 2-CENT BLUE PROVISIONAL — THIS IS THE ONLY RECORDED IMPRINT STAMP ON COVER.
- Ex Knapp and Kilbourne. Notation on back in Knapp's hand "From the Ashbook collection 1920" ..... E. 3,000-4,000



3053



3054



3055



3056



3057



3058

- 3053 **New Orleans La., 2c Blue (62X1).** Position 34, two large margins with part of adjoining stamp at top, other two sides ample, tied by bold "New Orleans La. 2 Aug." circular datestamp on small piece, Very Fine and choice, ex Ashbrook ..... 500.00
- 3054 **New Orleans La., 2c Blue (62X1).** Position 3, large margins all around, bright color and crisp impression, "New Orleans La. 26 Aug." circular datestamp, faint diagonal crease at top left, otherwise Extremely Fine ..... 500.00
- 3055 **New Orleans La., 2c Blue (62X1).** Position 36, large even margins all around, bright color, light "New Orleans La. 2 Dec." circular datestamp, small thin and sealed tear at top, appears Extremely Fine ..... 500.00
- 3056 **New Orleans La., 2c Blue (62X1).** Position 30, two large margins with trace of adjoining stamps at top and left, other sides clear to ample, bright color, bold "New Orleans La. 2 Sep." circular datestamp, small corner crease at top left and tiny nick in top right margin, otherwise Very Fine ..... 500.00
- 3057 **New Orleans La., 2c Blue (62X1).** Position 7, three large margins with part of adjoining stamp at right, slightly in at left, tied by "New Orleans La. 10 Sep." dashed-circle datestamp on small piece, Fine, signed Dietz ..... 500.00
- 3058 **New Orleans La., 2c Blue (62X1).** Horizontal pair, Positions 39-40, large margins to just into top left, tied by "New Orleans La. Jul. 26" circular datestamp on small piece of printed circular, light soiling at left, long scissors-cut between stamps (almost completely separated), otherwise Fine ..... 1,150.00
- 3059 **New Orleans La., 2c Blue, Red (62X1, 62X2).** Study of sixteen stamps comprising seven Blue and nine Red, large margins to close, **all plated with distinguishing plate characteristics noted** on two exhibit pages, twelve with flaws in "J.L. Riddell" and four with comma flaws, one Blue stamp used, others unused, a few lightly stained, generally Very Fine ..... *Not illustrated* 2,525.00



3060

3060 ☒ **New Orleans La., 2c Blue, 5c Red Brown on Bluish (62X1, 62X4).** Three 2c and one 5c, each with large margins to slightly in on one side, bright colors, tied together by four strikes of "Paid" cancel, full clear strike of "New Orleans La. 1 Oct." (1861) circular datestamp on cover to Orange C.H. Va., part of backflap removed, tiny tear in first 2c at left, opening tear into datestamp has been skillfully sealed, some very minor cosmetic improvements along top edge of cover

VERY FINE APPEARANCE. THIS IS THE ONLY RECORDED COVER WITH BOTH DENOMINATIONS OF THE NEW ORLEANS POSTMASTER'S PROVISIONAL ISSUE. ONLY TWO CONFEDERATE STATES COVERS ARE KNOWN WITH DIFFERENT PROVISIONAL ADHESIVES USED TOGETHER, THIS BEING THE ONLY 2-CENT COMBINATION. A SPECTACULAR COVER AND OF THE UTMOST IMPORTANCE IN CONFEDERATE PHILATELY.

Combination frankings involving two different stamps are extremely scarce in Confederate philately. Even among the General Issues, covers showing 2c, 5c and 10c stamps used in any kind of combination are elusive, and those involving 2c stamps are exceedingly rare. We know of only two Confederate provisional combination covers: the Nashville Tenn. 5c and 10c combination, ex Caspary, and this New Orleans 2c and 5c combination. The Nashville cover is a three-times 5c rate and has been skillfully reduced and restored. This New Orleans cover was prepaid at the 10c rate, with a 1c overpayment.

Ex Seybold, Needham and Grant. With 1969 P.F. certificate..... E. 10,000-15,000



3061

3061 ☒ **New Orleans La., 2c Blue (62X1).** Vertical pair, three large margins, in at left, bright shade, tied by full clear strike of “New Orleans La. 3 Sep.” (1861) circular datestamp, additional “**N.O.U.S. City Post**” **carrier datestamp** in large rimless circle — a much better strike of this well-worn marking than usually found at this late date — on cover addressed to “Miss Martha Maddern, 34 Gasquet St., New Orleans La.”, small opening tear at top center has been invisibly sealed

FINE AND ATTRACTIVE. THIS UNIQUE COVER REPRESENTS AN EXTRAORDINARY EVENT IN CONFEDERATE POSTAL HISTORY — THE USE OF POSTMASTER'S PROVISIONAL STAMPS TO PREPAY THE CARRIER FEE AND DROP RATE FOR INTRA-CITY MAIL. NOTHING ELSE EVEN REMOTELY COMPARABLE TO THIS COVER IS KNOWN IN CONFEDERATE PHILATELY.

The New Orleans U.S. City Post continued to operate after Louisiana entered the Confederacy in 1861. Prior to the Confederate period, there is only one cover known with the carrier fee and drop rate prepaid by stamps; the cover will be found in our Sale 791 as lot 182. The pre-war cover has a U.S. 1c 1851 pair for the 1c fee plus 1c rate. During the Confederate period, the N.O.U.S. City Post charged 2c for a letter, and the post office charged the standard 2c rate for a drop letter. We have no record of another Confederate cover with both rates prepaid by stamps, and the use of a New Orleans 2c Blue provisional pair — a major rarity in its own right — to prepay the 2-plus-2 postage is a fantastic example of a theoretical possibility actually surviving for collectors.

Another cover addressed to Miss Martha Maddern in the same hand was offered in the Meroni sale (lot 165). It has a faint strike of the “N.O.U.S. City Post Sep. 7” circular datestamp and 5c 62X4 provisional tied by the “New Orleans La. Sep. 6” river-mail double-circle datestamp, indicating that it arrived by steamboat and was mailed at the wharf, using carrier service to bring it to the addressee. The identical handwriting and use of the city name “New Orleans La.” in the address are evidence that this cover was brought in by someone on a steamboat, who mailed it as a drop letter with carrier service to the addressee.

Ex Needham..... E. 7,500-10,000



3062

- 3062 ☒ **New Orleans La., 2c Blue, Printed on Both Sides (62X1a).** Very Fine stamp, used with normal 2c Blue (62X1), huge margins showing parts of three adjoining stamps, slightly in on two sides, both tied by clear "New Orleans La. Sep. 1" circular datestamp on fresh unsealed cover to Burlington Miss., double 2c circular rate, the error has been lifted to show both sides (see photo below for original position)

EXTREMELY FINE. PROBABLY THE ONLY EXAMPLE OF THE 2-CENT PRINTED ON BOTH SIDES IN EXISTENCE. AN IMPORTANT PROVISIONAL RARITY AND KEY ITEM OF THE NEW ORLEANS POSTMASTER'S ISSUE.

Our records and the Crown census contain only one example of the 2c printed-on-both-sides error, which is the stamp on this cover. The Dietz catalog also lists an unused single and single on cover, but there may be no basis for those entries. Considering the rarity of normal 2c Blue stamps on or off cover, it would be surprising if another example of 62X1a escaped the notice of philatelists who track such items.

The Crown book (p. 264) contains the following quote from Charles J. Phillips: "In May 1890, the Scott Stamp & Coin Co. sold at auction the collection of my old friend C. B. Corwin. In this sale there was: 2c blue, a pair [sic] cancelled on cover, one stamp of the pair was printed on both sides. This unique item sold for \$27.00! I do not know its present location."

Ex C. B. Corwin and Everett. .... E. 7,500-10,000



3062

Detail of stamps in original positions



3063

- 3063 ☒ **New Orleans La., 2c Blue (62X1).** Position 26, large margins all around, tied by "New Orleans La. 6 Nov." on 1861 printed circular offering Confederate Notes and Bonds, to Kaufman Tex.

EXTREMELY FINE. ONE OF THE FINEST COVERS BEARING THE 2-CENT BLUE PROVISIONAL.

Approximately 30 covers are known with the 2c Blue (27 in Crown census), including circular rates and drop-rate usages. More than half of the covers have stamps without four margins or faults in the stamp and/or cover. The condition of this circular-rate usage ranks among the top ten percent.

Signed Dietz. .... 4,250.00



3065

3064

- 3064 ☒ **New Orleans La., 2c Blue (62X1).** Position 5, ample margins to a bit close at sides, tied by "New Orleans 14 Jul." (1861) circular datestamp on wrapper folded to shape of large wrapper to Charleston S.C., minor edge wear not affecting stamp, otherwise Very Fine, the wrapper probably enclosed a small booklet or newspaper ..... 4,250.00

- 3065 ☒ **New Orleans La., 2c Blue (62X1).** Position 2, three huge margins with part of adjoining stamp at right, touched at left, rich color and sharp impression, tied by "New Orleans La. 18 Jul." circular datestamp on buff drop-rate cover to New Orleans, addressee's name and street address cut out, otherwise Very Fine ..... 4,250.00

2-CENT RED (FIRST PRINTING)



3066

3066 ★ **New Orleans La., 2c Red (62X2).** All forty positions reconstructed from a total of 46 stamps, including (in descending order of size with positions in brackets): block of eight [7-8/15-16/23-24/31-32], block of six [19-20/27-28/35-36] and strip of five [13/21/29/37-38] rejoined to form the original block, strip of five [9-13], block of four\* [1-2/9-10], strip of three [7/14-15], pairs [17-18, 29-30\*, 39-40] and singles [3, 4, 5, 6\*, 22, 25, 26, 33, 34], all have original gum except those items marked with an asterisk (\*), generally of excellent color and freshness, full to large margins, corner block of four has thin spots and indelible ink on back, a few others may have small insignificant faults

A VERY FINE AND IMPORTANT PLATE RECONSTRUCTION OF THE SCARCE NEW ORLEANS 2-CENT RED POSTMASTER'S PROVISIONAL, INCLUDING A BLOCK OF EIGHT, REJOINED BLOCK OF ELEVEN, CORNER BLOCK OF FOUR AND STRIP OF FIVE. THE CORRECT PLATING OF THIS STAMP WAS ONLY COMPLETED IN 1977, AND THIS RECONSTRUCTION REPRESENTS ONE OF THE GREAT ACHIEVEMENTS IN CONFEDERATE PHILATELY.

For a detailed discussion of the plating of the 2c provisional, please refer to Dr. Skinner's article in the 1978 *Congress Book*, pages 122-128.

Total Scott value using only the premiums for a block of four and pair is \$10,200.00.....  
..... E. 5,000-7,500



3067

3067 (★)田 **New Orleans La., 2c Red (62X2)**. Block of nine, Positions 9-11/17-19/25-27, full to huge margins with sheet margin at left, unused (no gum), rich color, right stamps with vertical crease ending in reinforced tear in top right stamp, tiny nick at top right and light creasing in center row

VERY FINE APPEARANCE. THIS IS THE LARGEST RECORDED MULTIPLE OF THE NEW ORLEANS 2-CENT RED PROVISIONAL — A KEY PIECE IN DR. SKINNER'S PLATE RECONSTRUCTION.

This block was found in the 1970's and was a critical piece of evidence in reconstructing the 2c plate. Illustrated in Dr. Skinner's 1978 *Congress Book* article.....  
..... 2,175.00



3068



3069

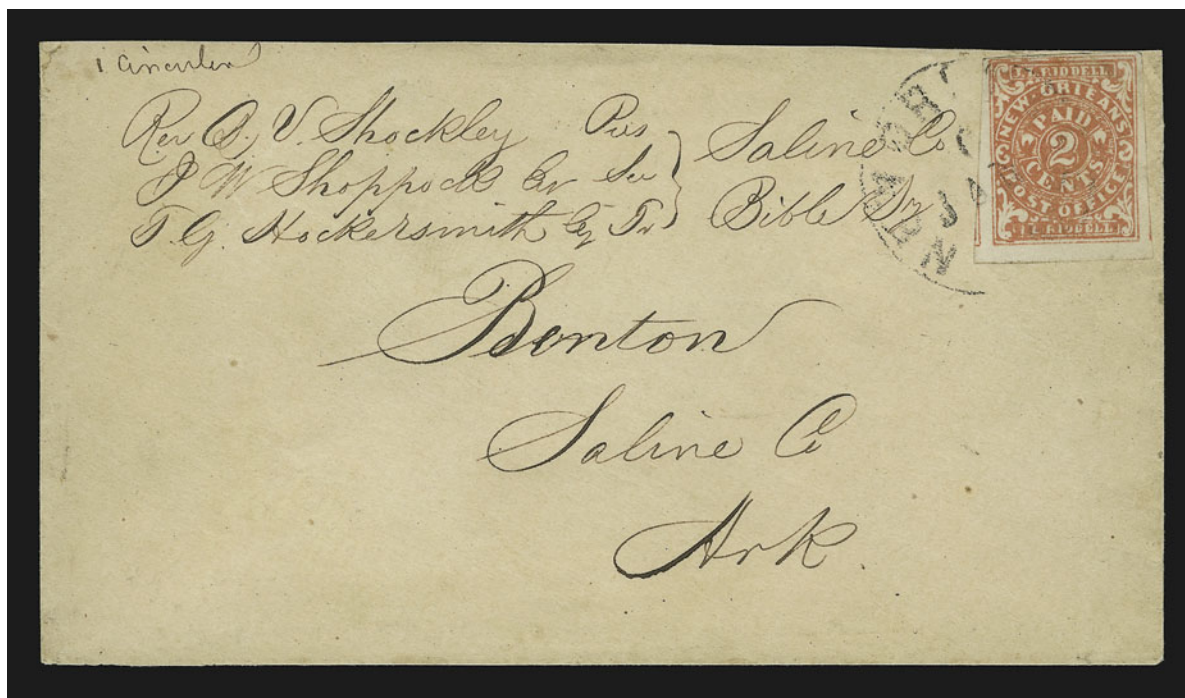


3070

3068 ★ **New Orleans La., 2c Orange Red (62X2)**. Horizontal pair, Positions 13-14, full to large margins, original gum, lightly hinged, Very Fine, a beautiful pair in the Orange Red shade, ex Caspary ..... 300.00

3069 **New Orleans La., 2c Red (62X2)**. Position 33, large to huge margins with sheet margin at bottom, bright color, lightly cancelled by New Orleans circular datestamp, small closed tear at top, Extremely Fine appearance and very rare in used condition, with 1971 P.F. certificate ..... 1,000.00

3070 **New Orleans La., 2c Red (62X2)**. Ample margins to just touching, bold "New Orleans La. 4 Apr." (1862) circular datestamp, vivid color, tiny thin spot, appears Very Fine, rare in used condition ..... 1,000.00



3071

- 3071 ✉ **New Orleans La., 2c Red (62X2).** Position 37, huge margins with trace of adjoining stamps at bottom left and bottom right, full at top, bright shade, tied by "New Orleans La. 6 Jan." (1862) circular datestamp on cover to Benton Ark., ms. "1 circular" at top left with the names of three members of the Saline County Bible Society, very slightly reduced at top and trivial small edge mends at top left

EXTREMELY FINE. ONE OF THE FINEST OF THE EIGHT RECORDED COVERS BEARING THE RARE NEW ORLEANS 2-CENT RED PROVISIONAL.

New Orleans postmaster, J. L. Riddell, prepared provisional stamps in June 1861 and advertised them for sale on June 12th. The 2c Red stamps were printed without the marginal inscription "Usable exclusively in the New Orleans Post Office". The 5c and subsequent 2c Blue printings all have the imprint. It is the accepted theory that the 2c Red stamps were printed first, before Riddell added the imprint, and were withheld from use until January 1862 when the supply of 2c Blue stamps was exhausted. The Crown book lists six 2c Red covers, while Dr. Skinner records eight covers. This cover comes from a correspondence acquired by Harold C. Brooks and is illustrated in Stanley B. Ashbrook's article on the Brooks collection (*Stamp Specialist*, 1945 Black Book).

Ex Brooks and Grant. .... 25,000.00



3072

3072 ☒ **New Orleans La., 2c Red (62X2).** Position 39, three large to huge margins with sheet margin at bottom, just barely into frameline at right, tied by "New Orleans La. 14 Mar." (1862) circular datestamp on blue folded cover to local addressee at Post Office Box 3008, cover has vertical file fold and light soiling

VERY FINE AND RARE DROP-RATE USE OF THE NEW ORLEANS 2-CENT RED PROVISIONAL. ONLY EIGHT COVERS ARE RECORDED.

Ex Needham..... 25,000.00

5-CENT BROWN ON WHITE (FIRST PRINTING)



3073

- 3073 ★田 **New Orleans La., 5c Brown on White (62X3).** Block of six, Positions 29-31/37-39, full to large margins with sheet margin at bottom with **part imprint**, toned original gum, small faults, otherwise Very Fine, this is the largest known multiple of the 5c Brown on White Paper (First Printing)..... 2,275.00



3074

- 3074 **New Orleans La., 5c Brown on White (62X3).** Position 6, full to huge margins with sheet margin at top with **inverted part imprint** "New Orlea(ns)", tied by light "New Orleans La. 15 Nov." circular datestamp on small piece  
EXTREMELY FINE. THIS IS THE UNIQUE EXAMPLE OF A NEW ORLEANS POSTMASTER'S PROVISIONAL STAMP WITH THE INVERTED IMPRINT.  
Ex Brown, Knapp and Caspary. .... E. 1,000-1,500



- 3075 New Orleans La., 5c Brown on White (62X3). Position 35, huge margins with **part imprint** sheet margin at bottom, close at top right, well-struck "Paid" cancel, Very Fine and choice ..... E. 200-300
- 3076 New Orleans La., 5c Brown on White (62X3). Position 36, large to huge margins including sheet margin at bottom with **part imprint**, tied by "New Orleans La. 12 Nov." circular datestamp on small piece, Extremely Fine Gem, ex Caspary ..... 150.00
- 3077 ✉ New Orleans La., 5c Brown on White (62X3). Horizontal pair, Positions 3-4, three large margins with **part imprint at top**, close to touching at bottom, tied by "Paid" cancel, "New Orleans La. 3 Aug." (1861) circular datestamp on orange cover to Lynchburg Va., Very Fine, choice pair and cover, ex Judd ..... E. 1,000-1,500
- 3078 New Orleans La., 5c Brown on White (62X3). Position 39, enormous margins all around with large part of adjoining stamp at top and trace of imprint at bottom left, well-struck "Paid" cancel, tiny thin spot at top center, otherwise Extremely Fine, signed Ashbrook (who identifies it as 62X5) ..... 150.00
- 3079 New Orleans La., 5c Brown on White (62X3). Full margins just in at left, with three different cancels including "New York Jul. 6" debit datestamp applied to foreign-bound mail, red transit and French due handstamp, indicating this stamp was used on a thru-the-lines cover, small thinning at top, otherwise Fine and rare, with 1987 P.F. certificate ..... E. 300-400
- 3080 New Orleans La., 5c Brown on White (62X3). Full margins, light red New Orleans double-circle datestamp, tiny thin spot at top, appears Fine, the double-circle datestamp was struck in red only by Dr. Riddell himself in June 1861, with 1983 P.F. certificate ..... E. 300-400
- 3081 New Orleans La., 5c Deep Brown on White (62X3). Horizontal pair, Positions 33-34, large margins all around, two strikes of "Paid" cancel, negligible faint corner crease at bottom right, still Extremely Fine and choice ..... 325.00
- 3082 New Orleans La., 5c Brown on White (62X3). Horizontal pair, Positions 37-38, large margins all around with sheet margin at bottom with **part imprint**, late worn impression, light "Paid" cancels, Extremely Fine ..... 325.00
- 3083 New Orleans La., 5c Brown on White (62X3). Horizontal pair, Positions 21-22, large margins all around, rich color, two bold strikes of "Paid" cancels, light vertical crease between stamps, otherwise Very Fine ..... 325.00
- 3084 New Orleans La., 5c Brown on White (62X3). Horizontal pair, Positions 29-30, ample to large margins, dark shade, two "Paid" cancels and trace of New Orleans circular datestamp at left, faint vertical crease thru left frameline of right stamp, otherwise Very Fine ..... 325.00



3085

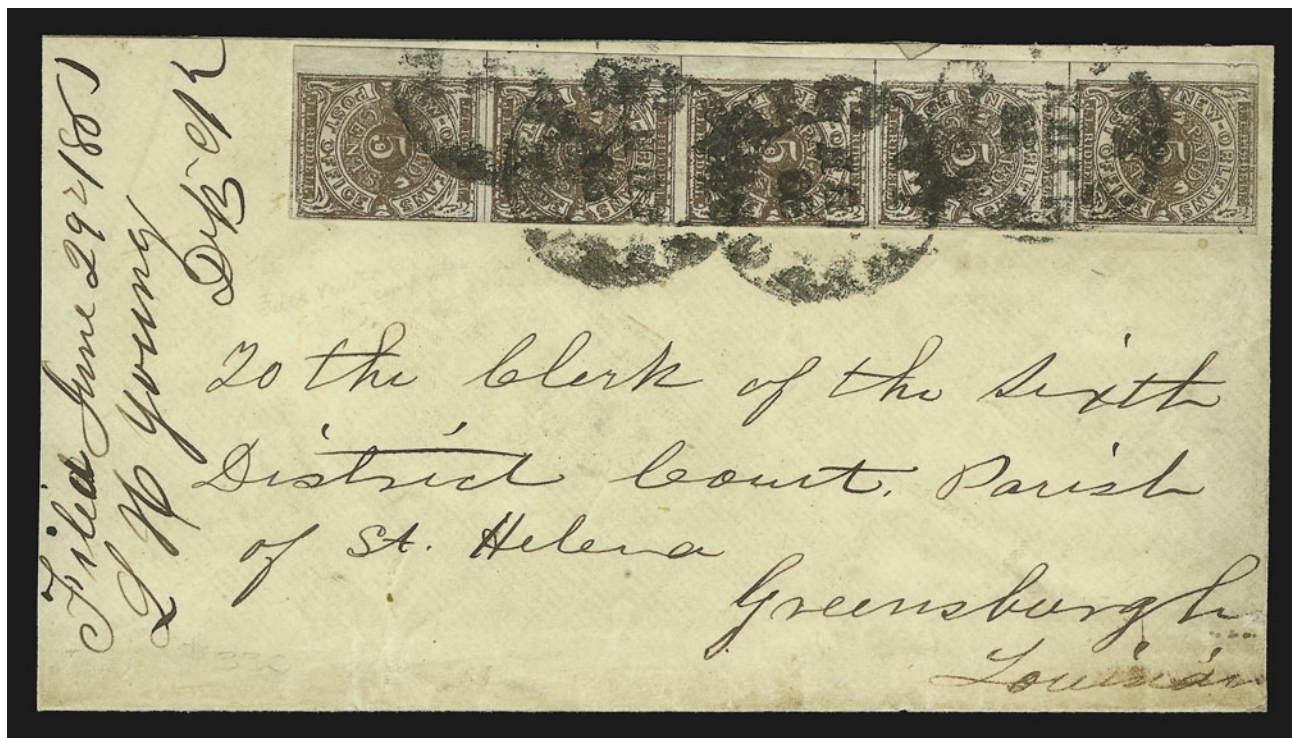
- 3085 ☒ **New Orleans La., 5c Brown on White (62X3).** Position 10, ample to clear margins all around, rich color, tied by “**Grand Gulf Miss. Jun. 18**” (1861) circular datestamp on cover to Port Gibson Miss. with red and blue **10-Star Confederate Flag Patriotic** design, “J.K. Sutterley, Bookseller, under the St. Charles Hotel, N.O.” imprint along staff at upper left, few tiny sealed edge tears clear of stamp and design

VERY FINE. A COLORFUL AND EXTREMELY RARE USE OF THE NEW ORLEANS PROVISIONAL ON A CONFEDERATE 10-STAR FLAG PATRIOTIC POSTMARKED OUTSIDE NEW ORLEANS.

This cover was posted aboard a steamer with the stamp uncanceled. It was transported to Grand Gulf Miss., where it entered the mails and received its postmark (used to cancel the provisional stamp). It then travelled a few miles inland to Port Gibson.

We are aware of nine patriotic covers with the 5c New Orleans provisional stamp, including red and blue Flag and Cannon designs and the unique “Soldier” design in black. The 10-Star Flag on this cover has a distinctive pattern of stars; another example used from Evergreen La. is shown in the Wishnietsky book on Confederate patriotics (p. 56). The design was later modified by adding an eleventh star to the center. We record an 11-Star with “R. Coburn, Bookseller, N.O.” imprint (ex Emerson, Wishnietsky book p. 69), another without imprint (our Sale 823, lot 20) and the cover offered in this sale as lot 3124 with the flag surprinted on back of an advertising cover printed in New York City.

Ex Knapp, Brown, Grant and Judd..... E. 7,500-10,000



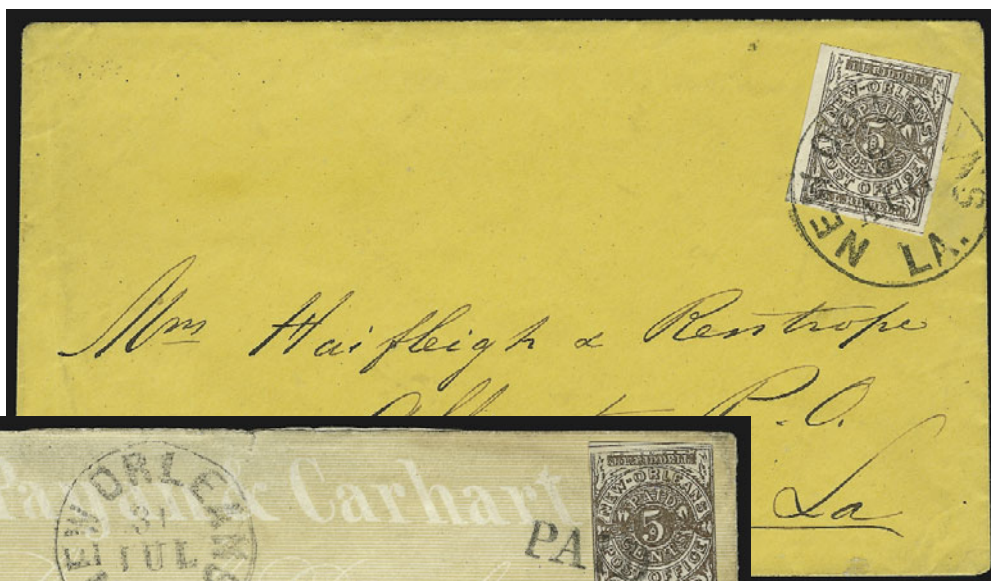
3086

- 3086 ☒ **New Orleans La., 5c Brown on White (62X3).** Vertical strip of five, Positions 8/16/24/32/40, huge margin at left, other sides close to touching, tied by multiple strikes of "New Orleans La. 28 Jun." circular datestamp on 1861 cover to Sixth District Court Parish of St. Helena, Greensburgh La., ms. receipt docketing, red wax seal affixed over, cover reduced by a few inches at left, top stamp in strip has closed tear

VERY FINE AND CHOICE. THIS IS THE ONLY RECORDED VERTICAL STRIP OF FIVE ON COVER AND THE SECOND LARGEST ON-COVER MULTIPLE OF THE 5-CENT PROVISIONAL.

We are aware of covers bearing a horizontal strip of six (offered in lot 3125), horizontal strip of five (end stamp deeply cut into) and two blocks of four. A block of six and vertical strip of five also exist off cover.

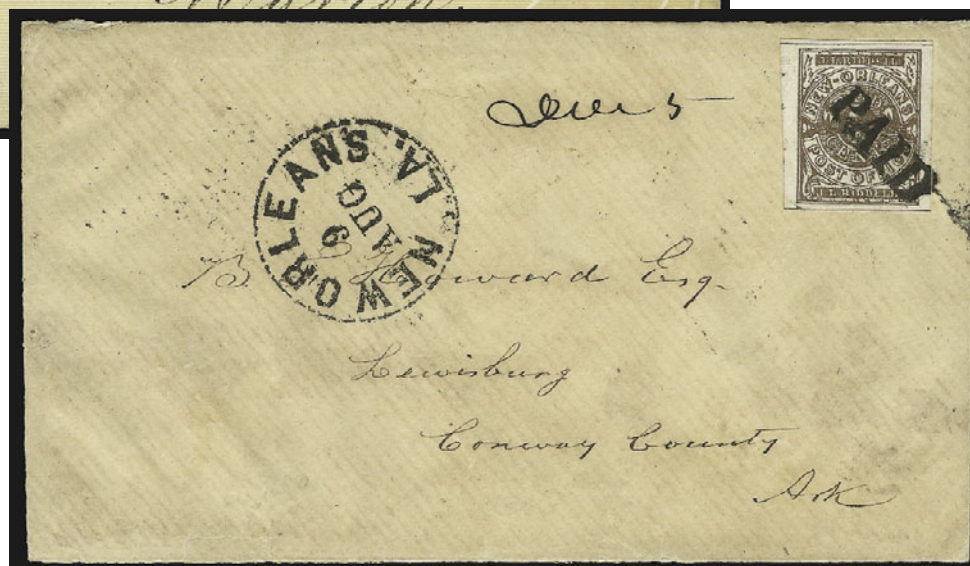
Ex Grant..... E. 3,000-4,000



3087



3088



3089

- 3087 ☒ **New Orleans La., 5c Brown on White (62X3).** Position 27, full to large margins, fine early impression, tied by clear "New Orleans La. 3 Aug." circular datestamp on orange cover to Alligator P.O. La., Extremely Fine and choice, ex Caspary, Haas. E. 750-1,000
- 3088 ☒ **New Orleans La., 5c Brown on White (62X3).** Full margins to touching, Position 13, tied by "Paid" cancel, clear "New Orleans La. 31 Jul." (1861) circular datestamp on cover to Marion Ala. with **yellow lithographed all-over advertisement for dealer in "Fashionable Clothing"**, part of backflap removed and small tear at top left, Very Fine E. 750-1,000
- 3089 ☒ **New Orleans La., 5c Brown on White (62X3).** Position 2, large to huge margins all around, fine impression, tied by bold "Paid", perfectly struck "New Orleans La. 9 Aug." (1861) circular datestamp on cover to Lewisburg Ark., ms. "Due 5" at top for double rate, cleaned and bottom flap repaired, appears Very Fine ..... E. 500-750
- 3090 **No Lot**



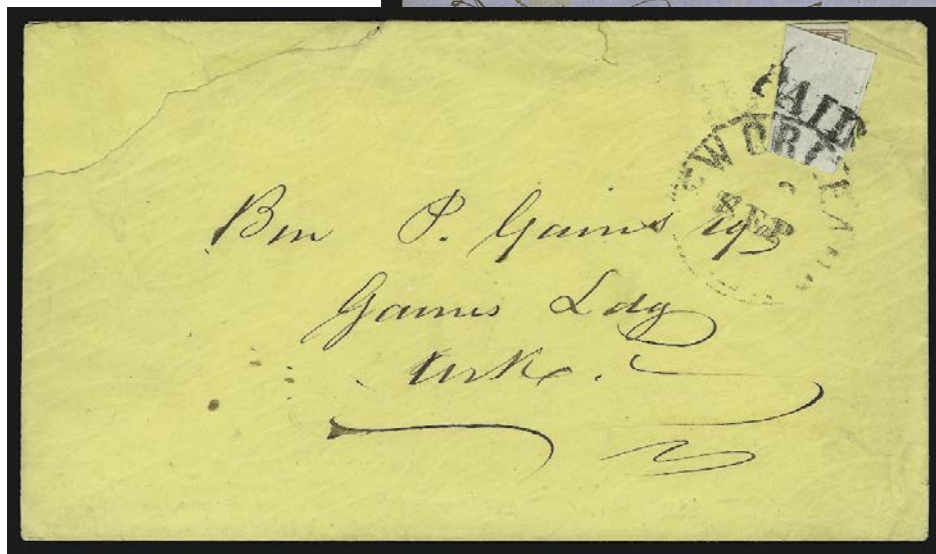
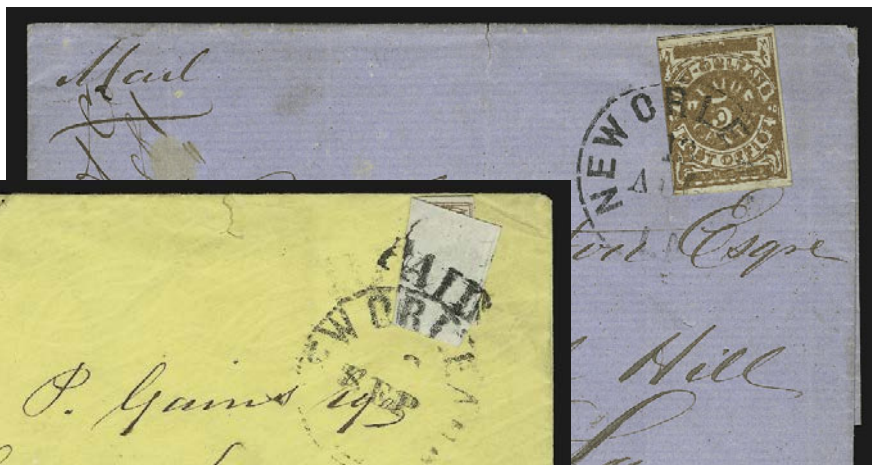
- 3091 ☒ **New Orleans La., 5c Brown on White (62X3).** Large to huge margins, tied by "New Orleans La. 9 Jul." (1861) circular datestamp on folded letter to Natchitoches La., Extremely Fine, very unusual use of a folded letter rather than envelope..... 400-00
- 3092 ☒ **New Orleans La., 5c Brown on White (62X3).** Position 18, full margins, "Paid" cancel (not tied), used on **pale yellow lithographed all-over illustrated advertising** cover to East Baton Rouge La., no New Orleans datestamp, vertical file fold and slightly reduced at left, address with slightly smeared ink, small mended tear, otherwise Fine... E. 200-300
- 3093 ☒ **New Orleans La., 5c Chocolate Brown on White (62X3).** Position 20, large margins at sides, into at top and bottom, tied by "New Orleans La. 19 Jun." circular datestamp on buff cover to Cayuga Miss., small stains on stamp, otherwise Fine, the first printing of the 5c was first sold on June 12, 1861 — this is a first-week usage ..... E. 500-750
- 3094 ☒ **New Orleans La., 5c Brown on White (62X3).** Ample margins except pieces out in bottom corners, tied by "Paid" cancel, matching "New Orleans La. 31 Jul." circular datestamp on cover to Carrollton Miss., with ms. "N.O. & J. R.R." (New Orleans and Jackson R.R.) at top and printed advertisement for **Copes and Phelps, Commission Merchants** on reverse, cover with faint diagonal crease clear of stamp, otherwise Fine.. E. 400-500
- 3095 ☒ **New Orleans La., 5c Brown on White (62X3).** Two singles, Positions 18 and 26, large to huge margins except close to touching at lower left corners, remarkably sharp impressions, tied by "New Orleans La. 23 Jul." circular datestamp on cover to Murfreesboro Tenn., edge wear and part of side backflap removed, otherwise Fine..... E. 300-400
- 3096 ☒ **New Orleans La., 5c Brown on White (62X3).** Vertical pair, Positions 21/29, ample margins to just in at lower right, tied by "Paid" cancels on **lithographed advertising cover** to Nashville Tenn., bold "New Orleans La. 24 Jul." (1861) circular datestamp, cover has small faults at top left, otherwise Very Fine, scarce vertical pair E. 750-1,000

- 3097 **New Orleans La., 5c Ocher (62X3b).** Position 36, large to huge margins, "New Orleans La. 2 Jul." circular datestamp, small thin and small sealed tear at right, appears Extremely Fine, a scarce shade..... 600.00

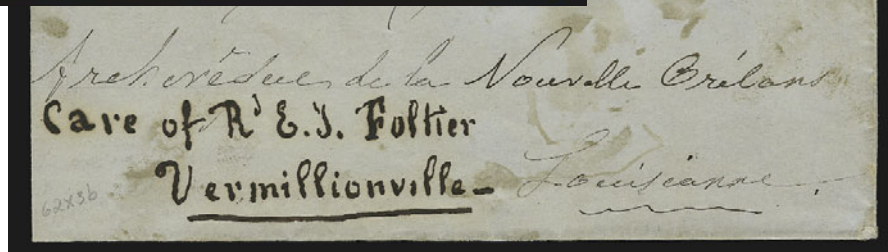


3097

3098

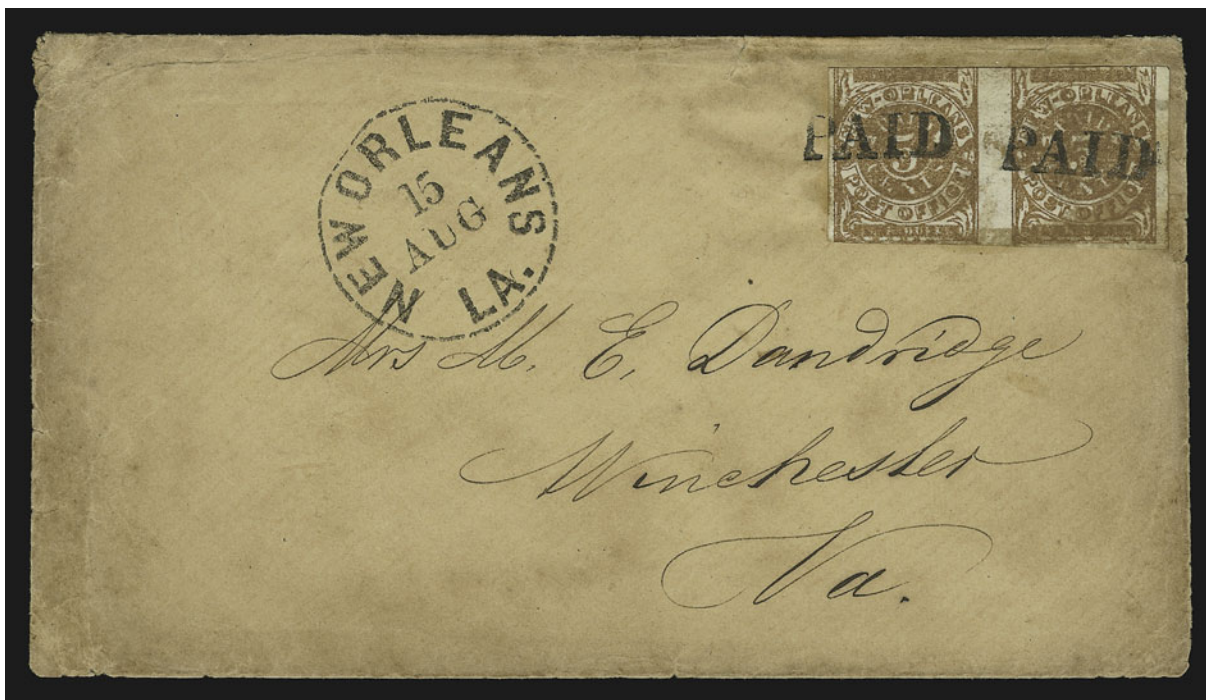


3100



3099

- 3098 ☒ **New Orleans La., 5c Ocher (62X3b).** Position 7, three full to large margins, barely in at left, rich caramel color, tied by "New Orleans La. 12 Aug." (1861) circular datestamp on blue folded cover to Laurel Hill La., receipt docketing at left, few file folds clear of stamp, Very Fine, the Ocher shade is very scarce..... 2,250.00
- 3099 ☒ **New Orleans La., 5c Ocher (62X3b).** Position 33, large margins all around, rich color, tied by "New Orleans La. 27 Aug." (1861) circular datestamp on blue folded cover to the Archbishop of New Orleans and forwarded to Vermillionville La., faint red "10" due handstamp, stained areas affect stamp, it also appears that an attempt was made to peel the stamp off, causing damage to the lettersheet beneath (reaffixed), otherwise Fine, very rare usage ..... 2,250.00
- 3100 ☒ **New Orleans La., 5c Ocher (62X3b).** Position 10, ample to large margins, horizontally creased and folded over, then tied by "Paid" cancel and "New Orleans La. 3 Sep." (1861) circular datestamp on yellow cover, cover with repaired opening tears clear of stamp and postmarks, stamp has sealed tear (not surprising considering half of it has been dangling off the cover for 139 years), still Very Fine and quite remarkable ..... 2,250.00



3101

- 3101 ☒ **New Orleans La., 5c Ocher (62X3b).** Horizontal pair, Positions 27-28, large margins to slightly in at top and bottom, tied by "Paid" cancel, "New Orleans La. 15 Aug." (1861) circular datestamp on brown cover to Manchester Va., light overall soiling, pair has minor gum stain, otherwise Fine, extremely rare pair of the Ocher shade..... 3,000.00



3102

- 3102 ☒ **New Orleans La., 5c Light Ocher on White (62X3b var).** Horizontal pair, Positions 4-5, mostly large margins with trace of imprint at top, just touched at top left, "Paid" cancels, matching "New Orleans La. 11 Aug." (1861) circular datestamp on yellow cover to Montgomery Ala., cover stains just touch pair, otherwise Fine, the Light Ocher shade is not listed in Scott, but the C.S.A. committee recently recognized this shade ..... E. 1,000-1,500

5-CENT RED BROWN ON BLUISH (SECOND PRINTING)



- 3103 ★ **New Orleans La., 5c Red Brown on Bluish (62X4).** Position 6, original gum, large to enormous margins with sheet margin at top with **part imprint**, clear impression on fresh deep blue paper, Extremely Fine and choice, a beautiful and superb stamp ..... E. 280.00
- 3104 **New Orleans La., 5c Red Brown on Bluish (62X4).** Position 39, three huge margins including sheet margin at bottom with **part imprint**, just barely in at top, New Orleans circular datestamp, faint diagonal crease at top left, otherwise Fine ..... E. 100-150
- 3105 **New Orleans La., 5c Red Brown on Bluish (62X4).** Position 3, three huge margins with sheet margin at top with **part imprint**, cut into at bottom, bold New Orleans circular datestamp, Fine . E. 200-300
- 3106 **New Orleans La., 5c Red Brown on Bluish (62X4).** Horizontal pair, Positions 1-2, huge to enormous margins all around with **corner sheet margin and part imprint at top left** and parts of adjoining stamps at bottom, New Orleans circular datestamp and two neat strikes of "Paid" cancels, pressed vertical crease between stamps and small diagonal crease at lower left, otherwise Extremely Fine ..... E. 425.00
- 3107 **New Orleans La., 5c Red Brown on Bluish (62X4).** Horizontal pair, Positions 3-4, ample to huge margins with sheet margin at top with trace of **imprint at top**, "Paid" cancels, tiny trace of a corner crease at top left, still Very Fine..... E. 425.00
- 3108 ☒ **New Orleans La., 5c Red Brown on Bluish (62X4).** Position 39, huge margins with **trace of imprint** at bottom, ample at top, tied by "Paid" cancel with bold "New Orleans La. 6 Sep." (1861) circular datestamp on small cover to Baton Rouge La., Extremely Fine, ex Judd ..... E. 300-400
- 3109 ☒ **New Orleans La., 5c Red Brown on Bluish (62X4).** Horizontal pair, Positions 3-4, large margins with **sheet margin and part imprint** at top, "Paid" cancel, "New Orleans La. 25 Sep." (1861) circular datestamp on cover to Bertie City N.C., pair has trivial corner crease, minor edge wear, otherwise Very Fine ..... E. 500-750



3110



3111



3112



3113



3114



3116



3117



3118



3119



3120



3121

- 3110 (★) **New Orleans La., 5c Red Brown on Bluish (62X4).** Unused (no gum), large margins to slightly in at top, faint vertical crease in left margin and tiny translucency in right margin, otherwise Fine ..... 280.00
- 3111 (★) **New Orleans La., 5c Red Brown on Bluish (62X4).** Position 22, unused (no gum), ample margins to close at top, fresh and Fine ..... 280.00
- 3112 **New Orleans La., 5c Red Brown on Bluish (62X4).** Large to enormous margins, rich color on nicely blued paper, neat "Paid" cancel, Extremely Fine Gem ..... 175.00
- 3113 **New Orleans La., 5c Red Brown on Bluish (62X4).** Position 13, large to huge margins all around, tied by bold "New Orleans 12 Feb." (1862) circular datestamp on small piece, tiny wrinkle at lower left, Extremely Fine, ex Caspary ..... 175.00
- 3114 **New Orleans La., 5c Red Brown on Bluish (62X4).** Large margins all around with part of adjoining stamp at top, well-struck "New Orleans La. 29 Nov." circular datestamp, faint diagonal preprinting paper crease, otherwise Extremely Fine, ex Judd ..... 175.00



3115 front and back

- 3115 **New Orleans La., 5c Red Brown on Bluish, Printed on Both Sides (62X4a).** Full margins, reverse with full split impression, also a mirror offset, New Orleans circular datestamp  
VERY FINE EXAMPLE OF THE RARE PRINTED-ON-BOTH-SIDES VARIETY. PROBABLY FEWER THAN A DOZEN EXAMPLES EXIST ON EITHER WHITE OR BLUISH PAPER.  
Ex Knapp and Brown ..... 2,750.00
- 3116 **New Orleans La., 5c Red Brown on Bluish (62X4).** Horizontal pair, Positions 31-32, huge margins including sheet margin at right, barely into frameline at top, tied by "New Orleans La. 12 Oct." dashed-circle datestamp on small piece, deep rich color, Very Fine ..... 425.00
- 3117 **New Orleans La., 5c Red Brown on Bluish (62X4).** Horizontal pair, Positions 37-38, large margins to close at bottom, bold "Paid" cancels, Fine-Very Fine ..... 425.00
- 3118 **New Orleans La., 5c Red Brown on Bluish (62X4).** Horizontal pair, Positions 13-14, ample to large margins, into at top, cancelled by two sharp strikes of the **New Orleans "PD 5 CTS/N.O.P.O." two-line provisional handstamp**, fresh and Fine, the provisional handstamp was also used on river mail, there are no pairs known on cover ..... E. 500-750
- 3119 **New Orleans La., 5c Red Brown on Bluish (62X4).** Vertical pair, close to large margins, blurry impressions on deep blue paper, faint but discernible strikes of **Southern Express Co.** double-circle datestamp, Fine-Very Fine, rare usage ..... 425.00
- 3120 **New Orleans La., 5c Red Brown on Bluish (62X4).** Horizontal pair, Positions 29-30, ample to large margins all around, rich color on deeply blued paper, "Paid" straightline cancels, Very Fine and choice, a beautiful sound pair ..... 425.00
- 3121 **New Orleans La., 5c Red Brown on Bluish (62X4).** Horizontal pair, Positions 17-18, enormous margins with wide sheet margin at left and parts of adjoining stamps at bottom, touched at top, well-struck "New Orleans La. 12 Nov." dashed-circle datestamp, Fine ..... 425.00

- 3122 田 **New Orleans La., 5c Red Brown on Bluish (62X4).**  
Block of four, Positions 7-8/15-16, three large margins incl. sheet margin at right, touching at bottom, multiple strikes of "New Orleans La. 20 Nov." circular datestamp, right pair with vertical crease ending in sealed tear at bottom  
  
FINE-VERY FINE APPEARANCE. THIS BLOCK OF FOUR IS THE SECOND LARGEST USED MULTIPLE OF THE NEW ORLEANS 5-CENT RED BROWN ON BLUISH PAPER.  
With 1976 P.F. certificate ..... 2,200.00



3122



3123

3123 ☒ **New Orleans La., 5c Red Brown on Bluish (62X4).** Three large margins, ample to just in at top, used with **General Issue 5c Green, Stone 1-2 (1)**, margins cutting in, both stamps tied by "New Orleans La. 11 Jan. (1862)" circular datestamp on cover to "Capt. J. M. Carter, C.S.N., C.S. Steamer Genl. Polk, Columbus Ky.", 5c has faint gum toning

VERY FINE COVER. ONE OF EIGHT RECORDED COVERS SHOWING CONJUNCTIVE USE OF CONFEDERATE POSTMASTERS' PROVISIONALS AND THE GENERAL ISSUE. ONLY FOUR OF THESE COVERS HAVE ADHESIVE PROVISIONALS, AND ONLY ONE IS KNOWN WITH THE NEW ORLEANS STAMP. IN MANY RESPECTS, WE CONSIDER THIS TO BE ONE OF THE MOST OUTSTANDING CONFEDERATE COVERS EXTANT.

We record a total of eight covers with combinations of Confederate provisionals (either adhesive or handstamped) and General Issue stamps to prepay postage — we have excluded from this count a few covers on which the provisional served no postal duty. In our opinion, these combination frankings are significant and quite undervalued — imagine what price would be paid for a Baltimore provisional handstamped entire with a U.S. 5c 1847 stamp, or a St. Louis "Bear" and 1847 combination.

The following is a list of the eight mixed-franking covers: 1) Columbia S.C. (18XU1) and 5c Green (1), Jan. 4, 1862, our Sale 810, lot 1862; 2) Columbia S.C. (18XU1) and 5c Green (1), Jan. 1, 1862, Crown book, p. 80; 3) Columbia S.C. (18XU1) and 5c Blue, Local (7), Sep. 1, 1862, our Sale 810, lot 1861; 4) Charleston S.C. (16X1, repaired) and 5c Blue, London (6), Aug. 5, 1862; 5) Memphis Tenn. 5c Red entire (56XU2) and 5c Green (1), date unclear, Siegel 1983 Rarities sale, lot 357; 6) New Orleans La. 5c Brown on Blue (62X4) and 5c Green (1), Jan. 11, 1862, Siegel 1983 Rarities sale, the cover offered here; 7) Petersburg Va. 5c Red (65X1) and 5c Green (1), Jan. 5, 1862, ex Muzzy; and 8) Petersburg Va. 5c Red (65X1) and 5c Green (1), Feb. 7, 1862, ex Kilbourne (realized \$52,500 hammer).

Ex Knapp, Ackerman and Grant. .... E. 10,000-15,000



3124 front and back

3124 ☒ **New Orleans La., 5c Red Brown on Bluish (62X4).** Horizontal pair, large to huge margins, rich color on deeply blued paper, tied by "New Orleans La. 5 Nov." (1861) circular datestamp on cover to Red Oak Grove Va. with **commission merchant's green lithographed overall advertisement** (imprint of New York City printer on back) and **surprinted on back with red and blue 11-Star Confederate Flag**, slightly reduced at right, two small scuff spots in cover, slight creasing between stamps from application

EXTREMELY FINE. A REMARKABLE DUAL ADVERTISING AND 11-STAR CONFEDERATE FLAG PATRIOTIC COVER, USED WITH A SUPERB PAIR OF THE NEW ORLEANS PROVISIONAL.

The 11-Star Confederate flag surprinted on the back of this advertising cover is a distinctive design with an unusual pattern of stars. It also exists in an earlier form with ten stars (the eleventh was added to the center). Very few examples are known, and the use of Confederate provisionals on this design is extremely rare. A 10-Star version is offered as lot 3085 in this sale.

Ex Dukeshire..... E. 7,500-10,000



3125

3125 ☒ **New Orleans La., 5c Red Brown on Bluish (62X4).** Horizontal strips of six and four, Positions 11-16, 19-22, margins vary from huge to slightly in, uncanceled, paying five-times 10c rate on legal-size orange cover originally containing depositions to District Court in Clarksville Tex., reverse with ms. "Rec'd this package from the hand of Wm. Shannon, Notary public, New Orleans August 27th 1861" and **signed by Postmaster J. L. Riddell** with "New Orleans La. Aug. 27, 1861" double-circle datestamp (probably by Riddell himself), cover has large green seal tied by Shannon's signature and ms. "Notary", minor corner flaws from mounting mentioned for accuracy only

VERY FINE. THIS IS THE LARGEST RECORDED MULTIPLE OF THE NEW ORLEANS 5-CENT POSTMASTER'S PROVISIONAL.

We are aware of covers bearing a vertical strip of five (see lot 3086), a horizontal strip of five (end stamp deeply cut into) and two blocks of four. A block of six and vertical strip of five also exist off cover. .... E. 3,000-4,000



- 3126 ☒ **New Orleans La., 5c Red Brown on Bluish (62X4).** Position 6, huge margins all around, tied by well-struck "Paid" cancel, "New Orleans La. 5 Sep." (1861) circular datestamp on **Cotton Factors' gray lithographed all-over advertising** cover to Lexington Miss., Extremely Fine and choice cover ..... E. 1,000-1,500
- 3127 ☒ **New Orleans La., 5c Red Brown on Bluish (62X4).** Large to huge margins, sharp early impression, "Paid" cancel, bold "New Orleans La. 27 Aug." (1861) circular datestamp on small fresh cover to St. Jacques La., Extremely Fine, ex Haas ..... 400.00
- 3128 ☒ **New Orleans La., 5c Red Brown on Bluish (62X4).** Position 33, enormous margins with **huge bottom left corner sheet margin**, mottled Second Printing impression on blue paper, tied by "New Orleans La. 3 Nov." (1861) circular datestamp on cover to Reading Miss., backflap removed, stain at upper left, otherwise Very Fine, the stamp is Extremely Fine, ex Haas ..... 400.00



- 3129 ☒ **New Orleans La., 5c Brown on Bluish (62X4).** Position 39, large margins all around, mottled Second Printing impression on blue paper, tied by bold "New Orleans La. 19 Oct." (1861) circular datestamp on cover to Port Gibson Miss., part of backflap removed, Extremely Fine, ex Emerson and Brooks ..... 400.00
- 3130 ☒ **New Orleans La., 5c Red Brown on Bluish (62X4).** Position 8, huge margins with **sheet margin at right**, clear at bottom, removed and hinged in place over blue crayon "5" rate marking, tied by "New Orleans La. Sep. 11, 1861" **river-mail** double-circle datestamp on cover addressed to Carroll Hoy & Co. New Orleans, ms. "Order for Fr.t" at top, couple usual file pinholes, Extremely Fine and choice cover, carried to New Orleans by steamboat and posted at the wharfside office, ex Caspary and Matz ..... E. 500-750
- 3131 ☒ **New Orleans La., 5c Deep Reddish Brown on Bluish (62X4 var).** Position 25, three large margins including **sheet margin at left**, barely in at bottom, tied by "New Orleans La. 10 Sep." (1861) circular datestamp on cover to Baton Rouge La., small part of backflap removed, otherwise Extremely Fine, a scarce shade variety of the Red Brown, signed Dietz ..... 400.00
- 3132 ☒ **New Orleans La., 5c Red Brown on Bluish (62X4).** Position 28, huge margins with trace of adjoining stamp at bottom, close at lower right, tied by bold "Paid" cancel, partly inked "New Orleans 25 Sep." (1861) circular datestamp (strengthened in pencil) on cover to Woodville Miss., minor backflap faults, otherwise Fine ..... 400.00
- 3133 ☒ **New Orleans La., 5c Red Brown on Bluish (62X4).** Position 10, huge margins with part of adjoining stamp at bottom, just touching at top, tied by clear "New Orleans La. 2 Oct." (1861) circular datestamp on yellow cover to Woodville Miss., stamp has minor corner creases at top, otherwise Very Fine ..... 400.00
- 3134 ☒ **New Orleans La., 5c Red Brown on Bluish (62X4).** Small margins, tied by clear "New Orleans La. 3 Feb." (1862) circular datestamp on cover to Ascension Parish La., cover repaired clear of stamp, appears Fine, a very late usage of a New Orleans provisional ..... 400.00



3135

- 3135 ☒ **New Orleans La., 5c Red Brown on Bluish (62X4).** Two horizontal pairs, Positions 1-2 and 36-37, large margins, tied by "New Orleans La. 11 Sep." (1861) circular datestamps on **merchant's salmon-colored lithographed advertising cover** to Natchez Miss., cover has small tears, two stamps with tears, Very Fine appearance, rare quadruple-rate franking on an advertising cover..... E. 2,000-3,000



3136

- 3136 ☒ **New Orleans La., 5c Brown on Bluish (62X4).** Horizontal pair, Positions 21-22, full to large margins, tied by sharp "New Orleans La. 10 Nov." (1861) circular datestamp on cover to Tallahassee Fla., Extremely Fine Gem, ex Judd..... 675.00

3137



3138



3139

- 3137 ☒ **New Orleans La., 5c Red Brown on Bluish (62X4).** Vertical pair, Positions 16/24, enormous margins with **sheet margin at right**, full at bottom, "Paid" cancels, "New Orleans La. 22 Aug." (1861) circular datestamp on cover to Morristown East Tenn., backflap removed and light vertical file fold clear of stamps, Very Fine, early usage (Aug. 20 is the earliest known), ex Seybold..... E. 1,000-1,500
- 3138 ☒ **New Orleans La., 5c Red Brown on Bluish (62X4).** Horizontal pair, Positions 33-34, large margins to clear at top, "Paid" cancels and tied by "New Orleans La. 11 Sep." (1861) circular datestamp on cover to Salem Va., minor sealed tear at top and part of backflap removed, otherwise Very Fine, ex Emerson, Brooks and Kohn ... E. 750-1,000
- 3139 ☒ **New Orleans La., 5c Brown on Bluish (62X4).** Horizontal pair, Positions 3-4, mottled Second Printing impression on blue paper, three huge margins, just into at top, tied by clear "New Orleans La. 18 Oct." (1861) circular datestamp on small cover to Richmond Va., Very Fine..... 675.00



3140

- 3140 ☒ **New Orleans La., 5c Brown on Bluish, Printed on Both Sides (62X4a).** Large margins all around, tied by "New Orleans La. Dec. 3" (1861) circular datestamp on folded cover to East Baton Rouge La., stamp has a vertical crease and a second part impression on back, evidently due to printing, stamp lifted and hinged in place to show reverse, cover with minor faults and edge wear

VERY FINE APPEARANCE. THE ONLY RECORDED COVER BEARING THE 5-CENT PRINTED-ON-BOTH-SIDES ERROR.

The shade and impression of this stamp are unusual for the Scott-listed Red Brown on Bluish 62X4 — it is a dull Brown color, not Red Brown, but the paper is definitely bluish. The Scott Catalogue lists the Brown on White printed on both sides (62X3a) on cover, but the listing is probably based on this cover. There is no cover listing for the Red Brown on Bluish (62X4a) in the current Scott Catalogue. We mention this confusion to support our claim that this is, in fact, the only cover extant with the 5c printed-on-both-sides error.

Ex Caspary..... E. 3,000-4,000

5-CENT YELLOW BROWN ON OFF-WHITE (THIRD PRINTING)



3141

3141 (★)田 New Orleans La., 5c Yellow Brown on Off-White (62X5). Complete pane of 40 with full imprints at top and bottom, unused (no gum), couple vertical creases between stamps and thru three stamps in second row, couple tiny margin faults

VERY FINE APPEARANCE. THIS IS THE UNIQUE INTACT PANE OF THE 5-CENT NEW ORLEANS POSTMASTER'S PROVISIONAL AND THE BASIS FOR THE PLATING OF THE ISSUE.

There are only a few Confederate Postmasters' Provisionals that have survived in sheet form: Fredericksburg and New Orleans are the only two large-format sheets. Sheets of the Nashville, Tellico Plains and Uniontown small-format settings are also known.

Ex Hiram Deats and Caspary. Pictured in Dr. Skinner's 1978 *Congress Book* article.....  
..... E. 5,000-7,500

- 3142 ★田 New Orleans La., 5c Yellow Brown on Off-White (62X5). Block of twelve, Positions 4-6/12-14/20-22/28-30, **nine stamps Mint N.H.**, other three original gum, lightly hinged, large to huge margins all around with **part imprint and trace of inverted part imprint at top**

EXTREMELY FINE. THE ONLY RECORDED BLOCK OF THE NEW ORLEANS 5-CENT PROVISIONAL SHOWING THE TÊTE-BÊCHE IMPRINT AT TOP.

This block is pictured in Dr. Skinner's article in the 1978 *Congress Book*. He offers two explanations for its existence: either the paper was cut double size and the sheets were turned and run through the press a second time after the first impression was made, or there were two printing forms locked head-to-head and printed at the same time. There is evidence to support both possible explanations. Dr. Skinner records one other example of this tête-bêche imprint — an unused single in the Tapling Collection at the British Library.

Scott Retail as two hinged blocks of four and two hinged pairs 1,850.00



3142



3143

- 3143 ★田 New Orleans La., 5c Yellow Brown on Off-White (62X5). Block of six, Positions 30-32/38-40, large to huge margins with lower right sheet margin and **part imprint at bottom**, original gum, top row and bottom center stamp lightly hinged, other two **Mint N.H.**, three stamps and margin with slight gum soaks, otherwise Extremely Fine..... 925.00



3144



3145



3146



3147



3148

- 3144 ★ **New Orleans La., 5c Yellow Brown on Off-White (62X5).** Horizontal strip of three, Positions 33-35, large margins with **lower left sheet margin and part imprint**, just in at top right, original gum, lightly hinged, tiny stain in margin, otherwise Very Fine and scarce corner-margin strip ..... E. 300-400
- 3145 (★) **New Orleans La., 5c Yellow Brown on Off-White (62X5).** Position 4, large to huge margins with sheet margin at top with **part imprint**, unused (no gum), Extremely Fine and choice imprint example ..... 125.00
- 3146 **New Orleans La., 5c Yellow Brown on Off-White (62X5).** Full to large margins, perfectly struck "New Orleans La. 21 Dec." circular datestamp, small margin corner crease at top left and tiny sealed nick in bottom margin, otherwise Very Fine..... 225.00
- 3147 **New Orleans La., 5c Yellow Brown on Off-White (62X5).** Horizontal pair, large top and bottom margins with trace of adjoining stamp at bottom left, ample to close at sides, **incomplete impression at lower left**, "New Orleans La. 6 Dec." circular datestamp, small diagonal crease at top left, otherwise Very Fine..... 500.00
- 3148 **New Orleans La., 5c Yellow Brown on Off-White (62X5).** Horizontal pair, Positions 36-37, full margins to clear at bottom, blurry impression, boldly struck "New Orleans 14 Dec" circular datestamp, left stamp with small thin spot, Fine appearance..... 500.00



- 3149 ☒ **New Orleans La., 5c Yellow Brown on Off-White (62X5).** Position 20, large margins to just touching, typical Third Printing impression, tied by “New Orleans La. 3 Dec.” (1861) circular datestamp on cover to Vicksburg Miss., cover reduced at left, tears and soiling, still Fine, Dec. 3 is the **earliest recorded date** of the Third Printing..... 500.00
- 3150 ☒ **New Orleans La., 5c Yellow Brown on Off-White (62X5).** Position 5, large margins to touched at bottom, tied by bold “New Orleans La. 15 Dec.” (1861) circular datestamp on printed prices current to Memphis Tenn., vertical file folds, Very Fine..... 500.00
- 3151 ☒ **New Orleans La., 5c Yellow Brown on Off-White (62X5).** Position 6, huge side margins and full to clear at top and bottom, tied by well-struck “New Orleans La. 10 Dec.” (1861) circular datestamp on cover to Tallahassee Fla., left edge of cover reduced with a portion added at upper left, Very Fine stamp and attractive Third Printing usage..... 500.00
- 3152 ☒ **New Orleans La., 5c Yellow Brown on Off-White (62X3).** Position 32, large margins at sides, touched at top, tied by “New Orleans La. 14 Dec.” (1861) circular datestamp on cover to Baton Rouge La., most of backflap removed, otherwise Fine ..... 500.00
- 3153 ☒ **New Orleans La., 5c Yellow Brown on Off-White (62X5).** Position 9, large margins to just touching, tied by “New Orleans La. 13 Dec.” (1861) circular datestamp on cover to Florence Ala., Very Fine Third Printing usage ..... 500.00

# 5-CENT RED ERROR



3154

3154

**New Orleans La., 5c Red on Bluish (62X7).** Position 1, full to large margins, intense shade on deeply blued paper, part of New Orleans circular datestamp and full clear strike of "Paid" cancel, thinning at left resulting in two tiny nicks (reinforced with archival paper)

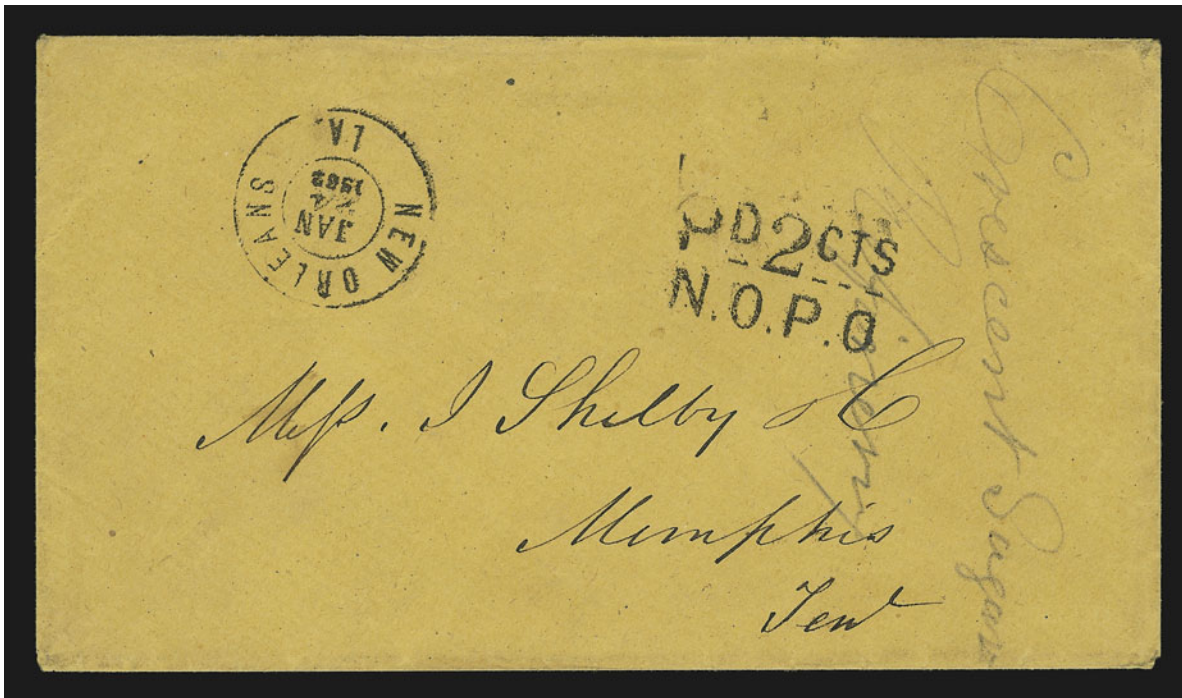
VERY FINE APPEARANCE. ONLY THREE OF THE SIX RECORDED EXAMPLES OF THE NEW ORLEANS 5-CENT RED ERROR ARE PRINTED ON BLUISH PAPER. ONE OF THE RAREST CONFEDERATE POSTMASTERS' PROVISIONALS AND THE ONLY COLOR ERROR IN CONFEDERATE PHILATELY.

Because the 5c Red error is found on two separate papers in such small numbers — with at least two of the copies showing a few traces of the normal brown color — Dr. Skinner theorizes that either "too much red ink was introduced onto the platen in blending the brown ink or the components of the ink separated while the press was idle for a time." This, he speculates, "produced a mottled impression on a very few sheets" and "would have been corrected as soon as the rollers passed across the platen a few times re-mixing or blending the ink."

Our records contain the following examples of the 5c Red error: **White Paper (62X6):** 1) unused with traces of gum, ex Hind, Brooks; 2) "DUE" straightline cancel, partly rebacked over thins, ex Caspary, Lilly and Kilbourne; 3) cut in at bottom, tied by "Paid" straightline on part of cover to Mrs. Wm. Reynauld, Baton Rouge, photo by Hiram Deats in P.F. files; **Blue Paper (62X7):** 4) Dec. 4 circular datestamp, filled thins, ex Crocker; 5) Sep. 17 circular datestamp, small faults, ex Ferrary, Hind, and Lilly, 6) Position 1, "Paid" and part datestamp, thinned with small nicks at left, ex Caspary, the stamp offered here. The Crown book lists only four examples on either paper (Nos. 3 and 4 above omitted). Dr. Skinner's 1978 *Congress Book* article notes only five examples on either paper (probably omitting No. 4). Based on our census, there is only one possible sound example of this rarity — the ex Hind/Brooks unused stamp — but that stamp has not been offered since the 1943 Laurence & Stryker sale of the Brooks collection.

Ex Caspary. Purchased by Dr. Skinner in our 1984 Rarities sale for \$6,500 hammer. ....  
..... 10,000.00

HANDSTAMPED PROVISIONAL ENTIRES



3155

- 3155 ☒ **New Orleans La., 2c Black entire (62XU3).** Full clear strike of "PD 2 CTS/N.O.P.O." two-line provisional handstamp with bold "New Orleans La. Jan. 24, 1862" double-circle datestamp on unsealed buff cover to Memphis Tenn., pencil note "*Crescent Sugar Refinery*"

EXTREMELY FINE. ONE OF FOUR RECORDED EXAMPLES OF THE NEW ORLEANS 2-CENT PROVISIONAL ENTIRE. THE STRIKES ON THIS ENTIRE AND ITS OVERALL CONDITION ARE THE BEST OF THE FOUR KNOWN.

Our records of New Orleans 2c handstamped provisional entires include the following four examples (in chronological order): 1) Jan. 21, 1862, circular rate to Rev. T. Lynch, Mebanesville N.C., with printed enclosure from Domestic Missions of the Confederate States, ex Walcott, Siegel 1985 Rarities sale; 2) Jan. 21, 1862, turned cover to McByrde, Pendleton S.C., inside with Pendleton "Paid 5", ex McBride; 3) Jan. 24, 1862, circular rate to J. Shelby & Co., Memphis Tenn., ex Judd, the cover offered here; and 4) Apr. 7, 1862, circular rate to County Court, San Antonio Tex., 1982 Rarities sale.

Ex Judd. .... 9,500.00



- 3156 ☒ **New Orleans La., 5c Black entire (62XU1).** Bold strike of “PD 5 CTS/N.O.P.O.” two-line provisional handstamp with “J. L. RIDDELL, P.M.” straightline and well-struck “New Orleans La. Dec. 3, 1861” river-mail double-circle datestamp, additional “**New Orleans La. 14 Mar.**” (1862) circular datestamp (sans-serif) on yellow cover to Dennis Mills La., vertical toning band

VERY FINE. THE ONLY RECORDED COMBINATION OF THE NEW ORLEANS PROVISIONAL HANDSTAMP AND BOTH TYPES OF NEW ORLEANS DATESTAMPS.

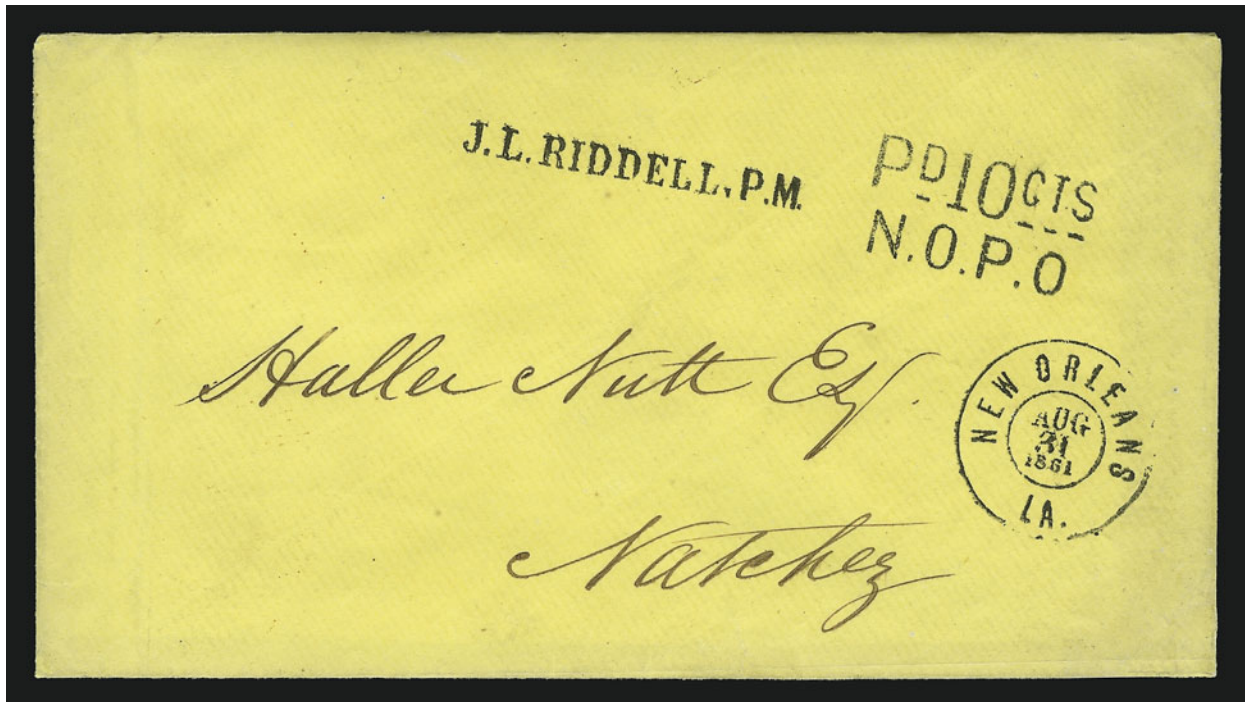
As noted in the description of the unique 10c entire (lot 3158), all provisional markings on that entire, including the datestamp, are impressed through the back of the envelope, indicating that they were applied before the letter (weighing over one-half ounce) was inserted. Therefore, in our opinion, the December 3 (1861) double-circle datestamp on this entire was applied when it was sold, and the March 14 (1862) circular datestamp was applied at the main post office when it was mailed three months later. Dr. Skinner’s analysis differs from ours — he believes that the entire was mailed on December 3 and returned to the main office on March 14, but we see no evidence of non-delivery. In our opinion, some of the New Orleans entires were sold in advance and postmarked with the double-circle on the day of sale; in this instance, the delayed mailing resulted in a second postmark.

Ex Knapp and Brown..... 4,500.00

- 3157 ☒ **New Orleans La., 5c Black entire (62XU1).** Sharp “PD 5 CTS/N.O.P.O.” two-line provisional handstamp with “J.L. RIDDELL, P.M.” straightline and well-struck “New Orleans La. Oct. 26, 1861” river-mail double-circle datestamp on cover to Gros Tete La., cover has small edge tears and stains clear of handstamps

VERY FINE AND CHOICE STRIKE OF THIS RARE PROVISIONAL ENTIRE.

Ex Grant..... 4,500.00



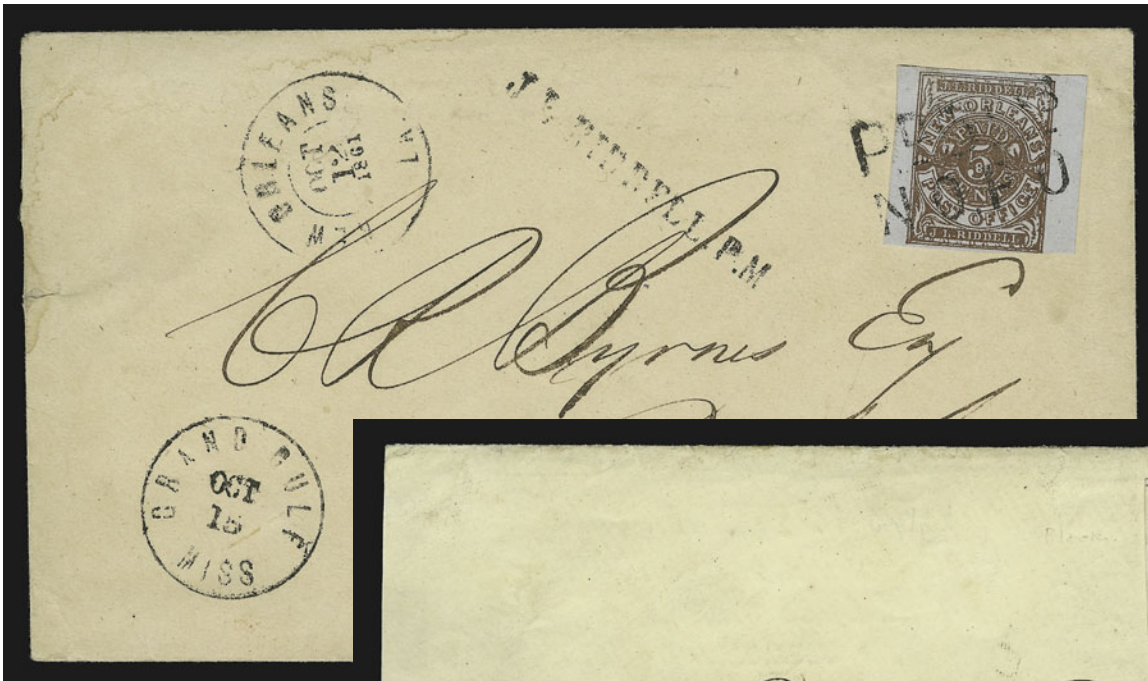
3158

- 3158 ☒ **New Orleans La., 10c Black entire (62XU2).** Remarkably perfect pitch-black strikes of "PD 10 CTS/N.O.P.O." two-line provisional handstamp, "J. L. RIDDELL, P.M." straightline and "New Orleans La. Aug. 31, 1861" double-circle datestamp on bright yellow entire to Natchez Miss., rate for distance was 5c, making this a double rate for weight, small part of bottom right corner has been skillfully repaired

EXTREMELY FINE. THE ONLY RECORDED EXAMPLE OF THE NEW ORLEANS 10-CENT POSTMASTER'S PROVISIONAL AND ONE OF THE MOST OUTSTANDING CONFEDERATE COVERS IN EXISTENCE.

An interesting and previously unmentioned feature of this unique 10c entire is that the back of the envelope shows impressions from each of the three separate markings, indicating that they were applied *before* the enclosure was inserted — they could not possibly pass through a letter, especially one heavy enough to require the double rate. Therefore, the provisional entire was prepared and sold with a datestamp applied.

From a group of four entires (including three 5c) discovered by H. C. Beck of Washington D.C. (see Crown book, p. 278). Ex Heathcote, Freeland and Graves. .... 12,500.00



3160



3159

- 3159 ☒ **New Orleans La., 5c Brown on White (62X3).** Position 14, large margins all around, tied by "PD 5 CTS/N.O.P.O." two-line provisional handstamp with matching "New Orleans La. Aug. 12, 1861" river-mail double-circle datestamp on cover to Canton Miss., advertisement for "Copes & Phelps, Commission Merchants" on back, slightly reduced at left and stamp with small sealed tear at top

VERY FINE. ONLY 12-15 COVERS ARE KNOWN WITH THE PROVISIONAL HANDSTAMP USED TO CANCEL THE 5-CENT PROVISIONAL STAMP. THIS IS ONE OF THE EARLIEST RECORDED EXAMPLES OF THE "PD 5 CTS/N.O.P.O." HANDSTAMP.

It is worth noting that only this cover and one other have the provisional stamp cancelled by the provisional handstamp without the "J. L. RIDDELL, P.M." straightline. This Aug. 12, 1861 cover is the earliest use of the "PD 5 CTS/N.O.P.O." handstamp we record.

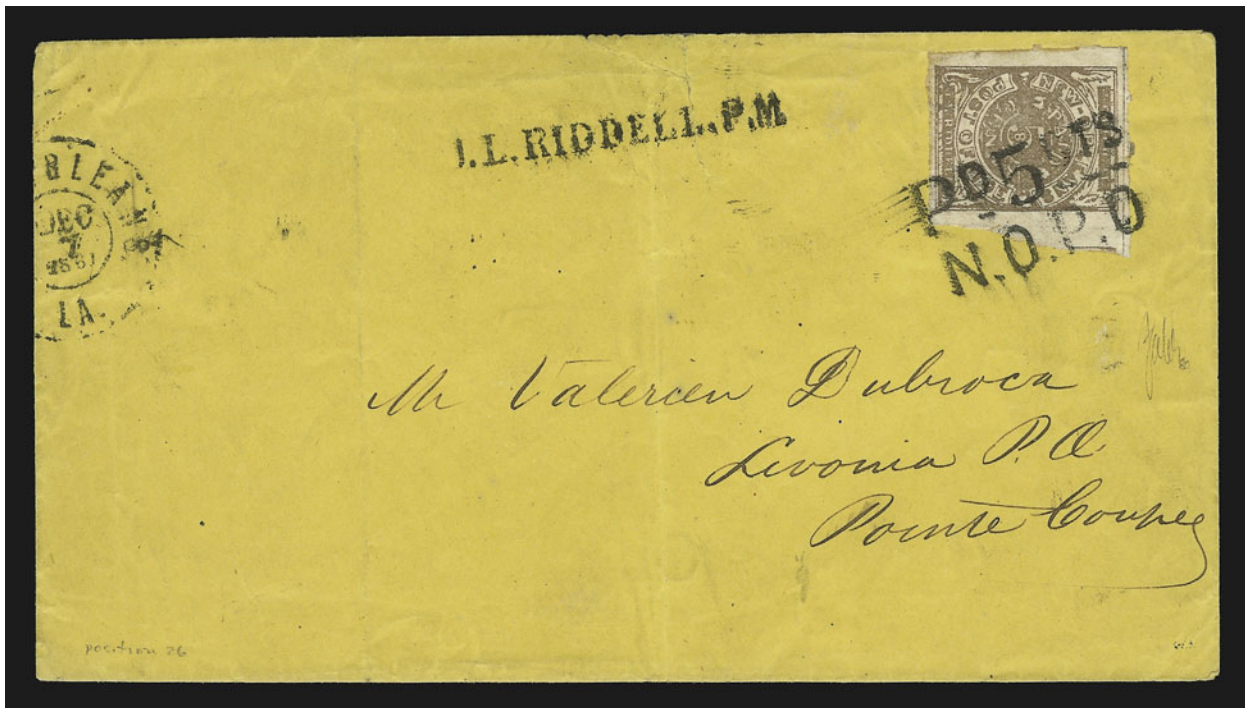
Ex Kimmel..... E. 3,000-4,000

- 3160 ☒ **New Orleans La., 5c Red Brown on Bluish (62X4).** Position 8, intense shade, huge side margins with sheet margin at right, ample to clear at top and bottom, tied by mostly clear strike of "PD 5 CTS/N.O.P.O." two-line provisional handstamp with "J. L. RIDDELL, P.M." straightline and "New Orleans La. Oct. 12, 1861" river-mail double-circle datestamp on cover to Port Gibson Miss., clear "Grand Gulf Miss. Oct. 15" circular datestamp, cover with trace of waterstain at top left

VERY FINE AND RARE USAGE OF THE PROVISIONAL HANDSTAMP TO CANCEL THE 5-CENT PROVISIONAL STAMP. OF THE 12-15 EXAMPLES KNOWN, ONLY THREE HAVE THE GRAND GULF POSTMARK.

This cover was mailed at the New Orleans wharfside post office and was carried up river to Grand Gulf Miss., where it was postmarked again and carried inland to Port Gibson.

Ex Deats, MacBride, Meroni and Kimmel..... E. 3,000-4,000



3161

- 3161 ☒ **New Orleans La., 5c Yellow Brown on Off-White (62X5).** Position 26, large to huge margins with part of adjoining stamp at right, rich color, tied by full clear strike of “PD 5 CTS/N.O.P.O.” provisional handstamp with “J. L. RIDDELL, P.M.” straightline and “New Orleans Dec. 7, 1861” **river-mail** double-circle datestamp on buff cover to Livonia La., half of backflap removed, couple vertical file folds clear of stamp and couple small tears at top center

VERY FINE. THIS IS ONE OF TWO RECORDED COVERS WITH THE NEW ORLEANS PROVISIONAL HANDSTAMP USED TO CANCEL THE 5-CENT THIRD PRINTING.

There are probably 12 to 15 covers with the New Orleans 5c provisional cancelled by the wharf-office markings, and most of these are dated between August and November 1861. This very late usage (Dec. 7, 1861) coincides with the availability of the 5c Third Printing (earliest known usage is Dec. 3 — see lot 3149). The other cover, dated Dec. 31, was offered in our Kilbourne sale (lot 129) and correctly described as a Third Printing, but misidentified as Scott 62X3 instead of 62X5.

Ex Deats and “Stonewall” ..... E. 4,000-5,000

## STEAM AND DUE MARKINGS

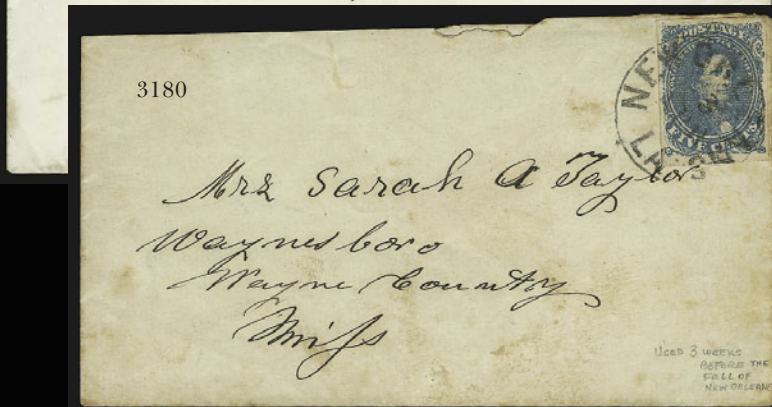
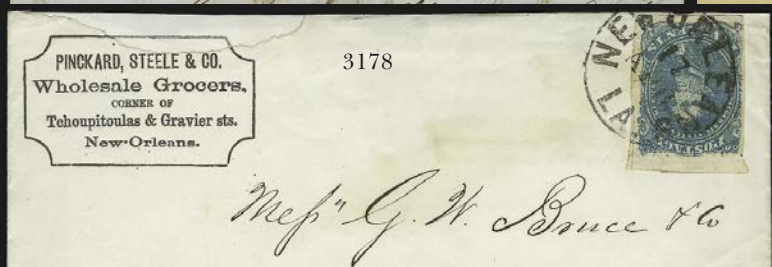
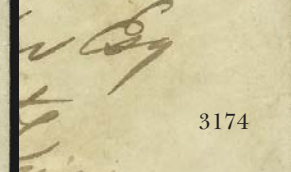
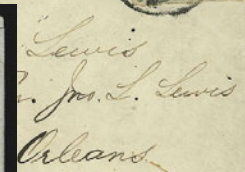
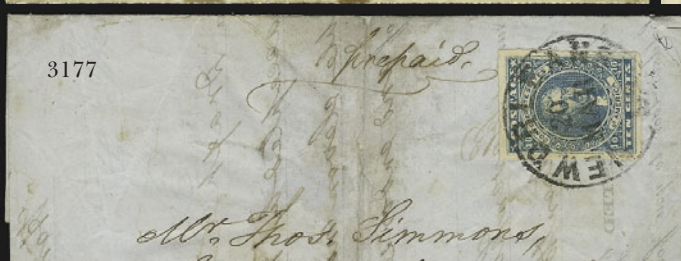
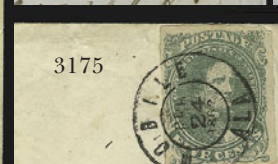
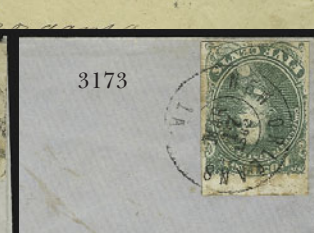
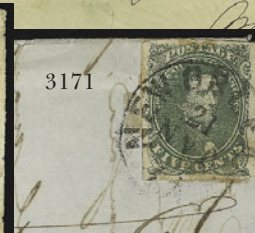
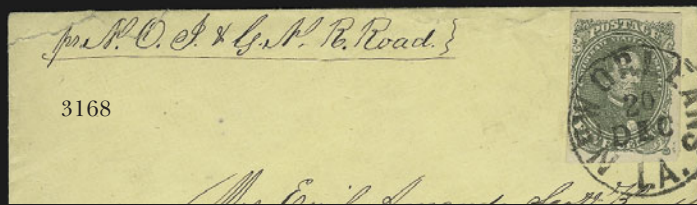


- 3162 ☒ **New Orleans La. Jul. 22, 1861.** Double-circle datestamp and bold “**Steam 7**” straightline (5c postage plus 2c ship captain’s fee) on fresh cover to Carroll Hoy & Co. at New Orleans, endorsed “*Str. Mary T.*” (name of non-contract steamboat), Extremely Fine, a choice and rare Mississippi River packet boat usage, ex Judd..... E. 1,000-1,500
- 3163 ☒ **New Orleans La., Sep. 1, 1861.** Double-circle datestamp, matching “**Steam 7**” handstamp (5c postage plus 2c ship captain’s fee) on cover to Carroll Hoy & Co. in New Orleans, sealed diagonal tear in top right corner, otherwise Very Fine..... E. 750-1,000
- 3164 ☒ **Corinth Miss. Apr. 10 (1862).** Partly readable circular datestamp on small cover to New Orleans, ms. soldier’s letter endorsement, bold “**due 5**” straightline handstamp, minor cover soiling, otherwise Very Fine, only a few covers are known with the New Orleans “due 5” handstamp ..... E. 500-750
- 3165 ☒ **Norfolk Va. Nov. 1, 1861.** Bright blue double-circle datestamp, matching “10” rate handstamp on soldier’s letter cover to W. H. Renaud in New Orleans, bold “**due 10**” straightline handstamp, cover has minor opening and edge flaws, otherwise Fine, rare New Orleans “due 10” marking..... E. 750-1,000



3166

- 3166 ☒ **ADV.** . “Advertised” framed handstamp and bold New Orleans “**due 10**” straightline on red and blue “**Washington Artillery**” and **11-Star Confederate Flag Patriotic** cover to New Orleans, adjutant’s endorsement at upper right, “Tudor Hall Va. Oct. 1” circular datestamp, “10” rate handstamp, light vertical fold, minor edge wear and small backflap fault, still Very Fine, an extremely rare use of the auxilliary markings on a rare patriotic design ..... E. 1,500-2,000



## GENERAL ISSUES

- 3167 ☒ **5c Olive Green, Stone A-B (1c).** Large margins all around, tied by sharp “New Orleans La. 18 Dec.” (1861) circular datestamp on **Cotton Factors’ lithographed all-over advertising** cover to Woodville Tenn., bold “DUE/5” handstamp applied at Memphis, Extremely Fine..... E. 750-1,000
- 3168 ☒ **5c Olive Green, Stone A-B (1c).** Huge margins to close at left, tied by well-struck “New Orleans La. 20 Dec.” (1861) circular datestamp on yellow cover to Chatawa Miss., ms. “*pr. N.O.J. & G.N.R. Road*” for **New Orleans, Jackson & Great Northern Railroad**”, opening tear barely affects top left corner, otherwise Very Fine, ex Brown ..... 275.00
- 3169 ☒ **5c Olive Green, Stone A-B (1c).** Two slightly overlapping singles, large margins to touched at one side, tied by bold “New Orleans La. 21 Dec.” (1861) circular datestamp and ms. docketing at left on fresh cover to Bertie City N.C., Very Fine..... E. 300-400
- 3170 ☒ **5c Green, Stone 1-2 (1).** Large margins except just in at left, tied by bold “New Orleans La. 19 Dec.” (1861) circular datestamp on **green wallpaper** cover to Morganza La., folded out for display, small piece out of flap, otherwise Fine..... 1,500.00
- 3171 ☒ **5c Green, Stone 1-2 (1).** Full to large margins, tied by “New Orleans La. 21 Jan.” (1862) circular datestamp on blue folded letter to Laurel Hill La., stamp has gum stains, cover with ms. bleed thru, otherwise Very Fine ..... 250.00
- 3172 ☒ **5c Green, Stone 1-2 (1).** Horizontal strip of three, full to large margins, stains, tied by two strikes of “New Orleans La. 11 Feb.” (1862) circular datestamp — underpaying 20c double rate over 500 miles — on cover to Rockbridge Artillery, Winchester Va. and forwarded to Lynchburg Va., “Winchester Va. Feb. 19” circular datestamp, bold **New Orleans “due 5”** straightline handstamp at bottom with “d” of second strike, **Lynchburg Va. blue “Due 5”** straightline handstamp, stains and small faults, appears Fine, rare franking with scarce New Orleans “due 5” ..... E. 750-1,000
- 3173 ☒ **5c Green, Stone 1-2 (1).** Huge margins to close at bottom, tied by clear “New Orleans La. Mar. 17, 1862” **river-mail** double-circle datestamp on blue cover to Gen. Dahlgren at New Orleans, stamp has gum stains, otherwise Very Fine..... 250.00
- 3174 ☒ **5c Green, Stone 1-2 (1).** Large margins to just touching, single bold pen stroke, deep rich color, tied by “New Orleans La. 9 Apr.” (1862) circular datestamp on **turned cover** to Liberty Miss., inside with 10c Blue, Die B (12) tied by “Canton Mi.” circular datestamp, used to Enterprise Miss., minor toning, Fine..... 250.00
- 3175 ☒ **5c Green, Stone 1-2 (1).** Full to large margins, tied by boldly struck “Mobile Ala. Feb. 24, 1862” double-circle datestamp on cover to New Orleans, slightly reduced at left, otherwise Very Fine..... 250.00
- 3176 ☒ **10c Dark Blue, Hoyer & Ludwig (2b).** Three large margins, just touching at right, tied by “New Orleans La. 15 Jan.” (1862) circular datestamp over old 3c Red Star Die entire to Memphis Tenn., backflap removed, otherwise Very Fine ..... 425.00
- 3177 ☒ **10c Dark Blue, Hoyer & Ludwig (2b).** Large margins, tied by mostly clear “New Orleans La. 20 Mar.” (1862) circular datestamp on blue notarized printed form to Spring Hill Ark., reinforced vertical file fold clear of stamp, otherwise Very Fine..... 425.00
- 3178 ☒ **5c Blue, Stone 2 (4).** Huge margins to close at left, tied by bold “New Orleans La. 17 Apr.” (1862) circular datestamp on grocer’s corner card cover to Memphis Tenn., small sealed tear at top left and backflap removed, otherwise Very Fine, used one week prior to the fall of New Orleans, ex Haas..... E. 300-400
- 3179 ☒ **5c Blue, Stone 2 (4).** Close margins to just in at top, rich color, tied by “New Orleans La. Mar. 31, 1862” **river-mail** double-circle datestamp on blue cover to Iberville and forwarded, stamp has scissors-cut at top, otherwise Very Fine, early usage one week after date of issue ..... E. 300-400
- 3180 ☒ **5c Blue, Stone 2 (2).** Full to large margins, tied by “New Orleans La. 3 Apr.” (1862) circular datestamp on cover to Waynesboro Miss., light toning, part of backflap removed, otherwise Fine, used three weeks prior to the Union capture of New Orleans.... 310.00

## PRISONER-OF-WAR MAIL

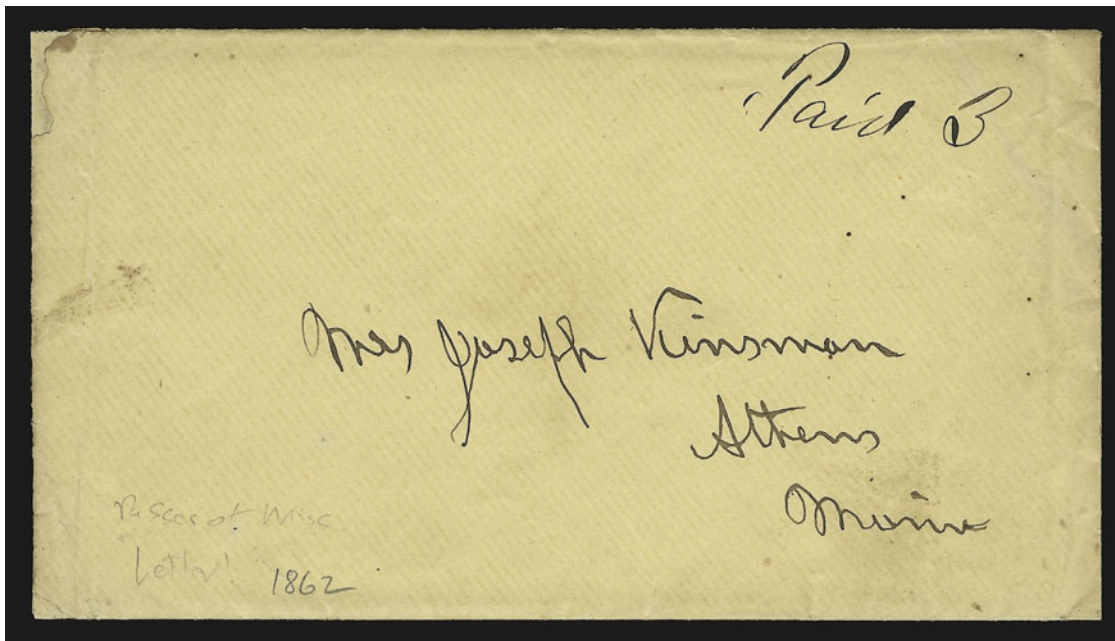


- 3181 ☒ **Federal Prison in New Orleans.** Small blue cover addressed to "Private William Weekes, Pelham Cadets, Prisoner of War, New Orleans La. — Captured at Fort Gaines", ms. "Examined" censor marking at left, no postal markings, Very Fine, Private Weekes was among the Confederates who surrendered to Farragut's forces when Fort Gaines fell on Aug. 8, 1864, at the Battle of Mobile Bay — we cannot yet determine the prison to which this letter is addressed, but the "Examined" is identical to the censor marking on the Dec. 15, 1864 cover illustrated in Antrim's book on page 65 (a drop letter to a prisoner) — worth further research, but there is no doubt this is a very rare prisoner-of-war cover ..... E. 750-1,000
- 3182 ☒ **Rock Island Barracks Ill..** Clear blue examiner's oval on orange cover to a Confederate prisoner at Rock Island, 3c Rose (65) tied by "New Orleans La. Sep. 13 '64" double-circle datestamp, ms. "Fr. a C.S.A. prisoner" at bottom left, blue ms. "10 ch"(arged) and lightened blue ms. "not found", slightly reduced at right, otherwise Fine ..... E. 400-500
- 3183 ☒ **Johnson's Island O..** Well-struck examiner's oval on cover to New Orleans, 3c Rose (65) tied by blue target with matching "Sandusky O. Dec. 14 '64" double-circle datestamp, insignificant tear in backflap, appears Fine, prisoners' letters addressed to New Orleans are scarce..... E. 400-500
- 3184 ☒ **3c Rose (65).** Tied by quartered cork cancel on **adversity cover** from unused printed checks to New Orleans, well-struck "Old Point Comfort Va. Jan. 17" double-circle datestamp and neat ms. "via flag of truce", tiny stain at left, and one backflap bit roughly opened for display, otherwise Very Fine..... E. 400-500

## FEDERAL OCCUPATION



Capture of Forts Jackson and St. Phillip



3185

- 3185 ☒ **Earliest Recorded Federal Occupation Usage from Louisiana.** Cover to Athens Me. simply marked "Paid 3" with no other postal markings, significant letter enclosed, dated "Head Quarters Dept. of the Gulf, On board the Steamer Mississippi, Head of the Passes, Mississippi River, April 29, 1862", the letter reads (in part): "Our fleet had an engagement with the Forts Jackson and St. Phillip & passed the Forts and proceeded on up the river to New Orleans leaving Forts unsundered — then we moved down the river and out into the Gulf with the land force and up in the rear of the Forts and commenced to land and was proceeding with the landing when yesterday afternoon seeing us from the Forts they mutinied — shot one of their Officers and at five in the afternoon they surrendered to our troops — on this morning we started down the Gulf and up the river to where we are now — the General has gone up to New Orleans on a Gun Boat and is expected down tonight — our fleet is lying in front of the city and is said to be surrendered to the Gun Boats and if so I suppose we shall go up tomorrow and take possession — wont that be humiliating to the proud Southerners" — although Confederate forces gave up New Orleans on Apr. 26, officials in charge of the city delayed surrender for days, which resulted in Farragut ordering his forces to take the city on Apr. 29, the date of this letter and the event described by the writer — the mailing of this letter probably coincides with the arrival of Federal occupation troops on May 1, 1862 — an outstanding Civil War cover and letter..... E. 1,000-1,500

3186  
*Soldiers Letter*  
 31 Aug '64  
 Ship Letter  
 Mrs. Mary C. ...  
 ...

3187  
  
 L. J. Parsons Esq  
 187 Franklin St  
 New Haven  
 Conn

3188  
*"The Union, our life must be preserved"*  
*Soldiers Letter*  
 C. Andrew, Chaplain of the 64<sup>th</sup> Mich. Regt  
 Mrs. James H. Boyden  
 Care L. S. Boyden  
 Saline  
 Due 3  
 Washington D.C.

3189  
 from M. S. Scher, at ...  
 Sarah E. Smith  
 Northport  
 L. Island

3191  
*Soldiers Letter*  
 Capt. ...  
 ...

3190  
*Ship Letter*  
 SHIP 5  
 Mrs. Sarah E. Smith

3192  
  
*Soldiers Letter*  
 chaplain ...  
 Mr. Wendell G. ...  
 Ethics, P.O. ...

3193  
 Mrs. H. C. Foster  
 Lowell  
 Mass

3195  
 July - 1864  
 1<sup>st</sup> Asst. Surg.  
 James H. ...  
 W. A. ...

3194  
 ...  
 ...

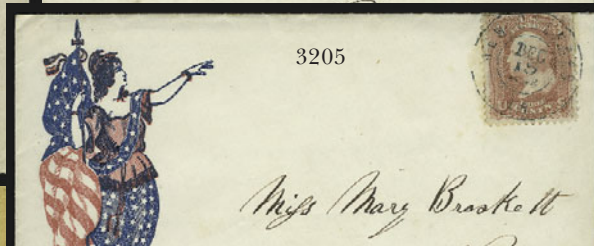
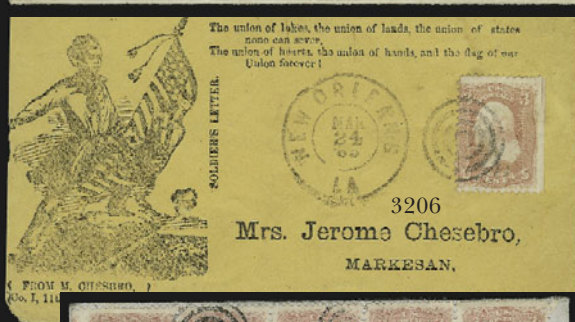
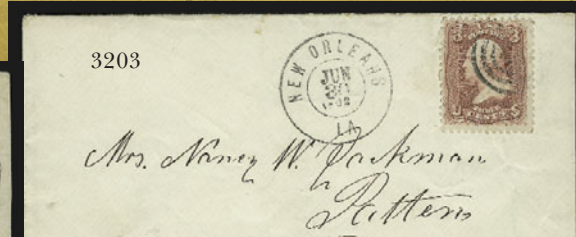
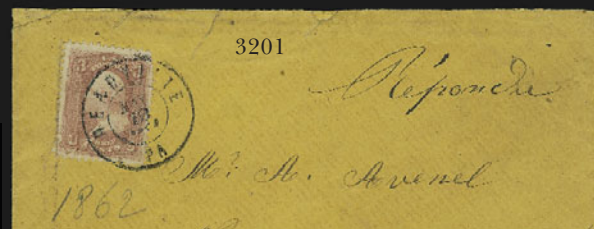
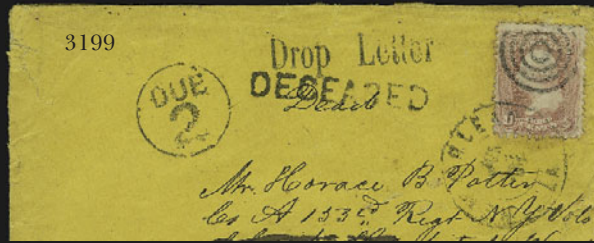
3197  
 ...  
 Capt. ...  
 ...

3196  
 DEPARTMENT OF THE C  
 Headquarters, U. S. Sequestration  
 OFFICIAL BUSINESS

3198  
 2 cts  
 Dr. Charles B. White, U. S. A.  
 Med. Purveyor's Office  
 101 Magazine St.  
 New Orleans, La.

U. S. ...  
 ...  
 ...

- 3186 ☒ **“Ship Island Miss. May 6”**. Ms. postmark and “3” rate on orange cover to Hardwick Mass. with soldier’s letter endorsement, enclosed in cover is a blank printed postage-return form (Riddell’s name at bottom) with May 5, 1862 date and message *“Please excuse non prepayment of postage as I have only Confederate money & stamps”*, Extremely Fine, the form was probably salvaged from the ransacked post office..... E. 300-400
- 3187 ☒ **Ship Island Miss. May 3**. Circular datestamp and “Paid 3” handstamp on red and blue **Soldier and Flag “No Quarter to Traitors” Patriotic** cover to New Haven Conn., additional “Due 3” in oval, a bit age toned, still Very Fine, scarce — May 1862 usage, which some believe to be a time when the Ship Island device was used at New Orleans (a theory to which Dr. Skinner does not subscribe) ..... E. 750-1,000
- 3188 ☒ **New Orleans La. Jun. 5, 1862**. Double-circle datestamp and “Due 3” on **soldier’s letter and handwritten patriotic cover** to Saline Mich., ms. *“The Union can & must be preserved”* at top, Fine ..... E. 300-400
- 3189 ☒ **“From U.S. Schooner Arletta”**. Ms. sailor’s endorsement at top left on cover to New York, “Cairo Ill. Jul. 8, 1862” double-circle datestamp where entered the regular U.S. mail and bold “Due 3” in circle handstamp, parts of backflap removed and minor edge wear, otherwise Fine ..... E. 150-200
- 3190 ☒ **“Ship” in Oval**. Clear strike with “5” in circle handstamp and “New Orleans La. Jun. 10, 1862” double-circle datestamp on yellow cover to Northport N.Y., ms. *“Ship letter”* at top left, Fine ..... E. 150-200
- 3191 ☒ **Soldier’s Letter**. Endorsement at top right on yellow cover from soldier in Aransas Pass, Tex. to Fulton N.Y., “New Orleans La. May 13 ‘64” double-circle datestamp where entered the U.S. regular mails, vertical fold and light creasing at left, otherwise Fine..... E. 200-300
- 3192 ☒ **Banks Division Jun. 3**. Blue circular datestamp with matching blue “Due 3” in circle on yellow patriotic cover to Galesboro Pa. red and blue design with **George Washington** in medallion, ms. soldier’s endorsement, Very Fine ..... E. 200-300
- 3193 ☒ **1c Blue (63)**. Horizontal pair, tied by “New Orleans La. Aug. 12, 1863” double-circle datestamp on newspaper wrapper to Lowell Mass., unusual usage ..... E. 100-150
- 3194 ☒ **1c Blue, 3c Rose (63, 65)**. 1c slightly overlapping 3c horizontal strip of three, target cancels with one tying strip of three on cover to San Francisco, “New Orleans La. May 6, 1863” double-circle datestamp, cover with small edge faults, otherwise Fine, used in the late stages of the 10c rate to California, which was lowered to 3c on June 30, 1863..... E. 150-200
- 3195 ☒ **3c Rose (65)**. Tied by quartered cork cancel, “Old Point Comfort Va. Jul. 17” double-circle datestamp on cover to *“1st Asst. Engr. James Atkins U.S.N./U.S. Steamer ‘Metacomet’/ Western Gulf Blockading Squadn via New Orleans”*, ms. July 1864 docketing at left, backflap removed, otherwise Very Fine, typed abridged history of Metacomet accompanies..... E. 200-300
- 3196 ☒ **3c Rose (65)**. Tied by target cancel on **Dept. of the Gulf, U.S. Sequestration Commission** imprint cover to Morrisville N.Y., “New Orleans La. Aug. 12, 1863” double-circle datestamp, stamp has s.e. at left and small faults from placement at edge of cover, otherwise Very Fine..... E. 300-400
- 3197 ☒ **3c Rose (65)**. Clear target cancel and bold “New Orleans La. Sep. 28 ‘64” double-circle datestamp on cover to Cumberland Center Maine from an officer aboard the U.S.S. *Althea*, ship-name endorsement, couple small stains, otherwise Fine ..... E. 200-300
- 3198 ☒ **3c Rose (65)**. Tied by target and “New Orleans La. Mar. 7 ‘65” double-circle datestamp on cover to New Orleans, **“Ship” and “2 cts.”** handstamps in separate ovals, Very Fine and rare, the ship rate to the port is 4c — because the 3c underpays the rate by 1c, the penalty is 2c postage due ..... E. 200-300



- 3199 ☒ **3c Rose (65).** Tied by target and “New Orleans La. Jun. 3 ‘64” double-circle datestamp on buff cover to N.Y. soldier in a New Orleans hospital, **“Drop Letter”** and **“Deceased”** straightline handstamps and “Due 2” in circle, “New Orleans La. Jun. 22” double-circle datestamp on back, opened on two sides, Fine and rare markings, the “Deceased” handstamp is extremely rare and unusual..... E. 200-300
- 3200 ☒ **3c Rose (65).** Target cancel, tied by “New Orleans La. Nov. 17 ‘64” double-circle datestamp on cover to the wife of engineer aboard U.S. gunboat *Octorara* who was located in New Orleans, well-struck **“Due 2” in circle** and **“Drop Letter”** straightline, ms. “*Octorara Nov. 14*” at top left barely affected by slight cover reduction, otherwise Very Fine ..... E. 200-300
- 3201 ☒ **ADV. .** Boxed handstamp with rate removed on back of buff cover to New Orleans, 3c Rose (65) tied by “Meadville Pa. May 10, 1862” double-circle datestamp, light soiling, otherwise Very Fine ..... E. 200-300
- 3202 ☒ **3c Rose (65).** Tied by “New Orleans La. Jan. 23, 1863” double-circle datestamp on cover with **Fifteenth New Hampshire Regiment** corner card and printed Laconia N.H. address, slightly reduced at right, otherwise Extremely Fine..... E. 200-300
- 3203 ☒ **Soldier’s Letter.** Datelined “*New Orleans June 22nd 1862*” on Union patriotic lettersheet depicting Gen. McClellan on his horse inspecting the troops, original cover with 3c Rose (65), target cancel and “New Orleans La. Jun. 30, 1862” double-circle datestamp to Patten Me., cover with embossed backflap and colored trim on reverse, Extremely Fine, early soldier’s letter..... E. 300-400
- 3204 ☒ **3c Rose (65).** Tied by target and “New Orleans La. Mar. 11 ‘64” double-circle datestamp on red and blue **Liberty & Flag Patriotic** cover to New Salem Mass., bold “Due 6” in circle handstamp, Very Fine and choice..... E. 300-400
- 3205 ☒ **3c Rose (65).** Tied by blue “New Orleans La. Dec. 15, 1862” double-circle datestamp on red and blue **Liberty with Flag Patriotic** cover to Webster Mass., original letter datelined “*Fort Jackson La. Dec. 10th 1862*”, remarkably fresh and Very Fine ..... E. 150-200
- 3206 ☒ **3c Rose (65).** S.e. at right, tied by target, “New Orleans La. Mar. 24 ‘65” double-circle datestamp on yellow **patriotic cover with printed return and mailing addresses**, cover has rounded corner, otherwise Very Fine ..... E. 400-500
- 3207 ☒ **3c Rose (65).** Tied by bold “New Orleans Nov. 8 ‘64” double-circle datestamp on pink-lined cover to Canton N.Y. with **“Scotts Nine Hundred. 11th New York Cavalry”** and horse and rider printed at top left, “Due 6” in circle handstamp, small tear at top and stamp with small stain, slightly reduced at right, otherwise Fine..... E. 200-300
- 3208 ☒ **3c Rose (65).** Two slightly overlapping singles, target cancels, “New Orleans La. Mar. 7, 1863” double-circle datestamp on red and blue **Eagle and Flag on Globe Patriotic** cover to Abington Mass., few tiny tears at top and tear across backflap, otherwise Very Fine .... E. 200-300
- 3209 ☒ **3c Rose (65).** Horizontal strip of five, tied by target cancels and sharp “New Orleans La. May 26, 1863” double-circle datestamp on small blue folded letter **to Paris, France**, bold red New York credit datestamp and Calais transit, red framed “PD” handstamp, Very Fine and scarce franking..... E. 200-300
- 3210 ☒ **30c Orange (71).** Tied by circle of V’s cancel and “New Orleans La. Nov. 15” circular datestamp on yellow cover **to Paris, France**, red New York credit and Calais transit datestamps, red framed “PD” handstamp, Fine..... E. 200-300
- 3211 ☒ **30c Orange (71).** Tied by target, “New Orleans La. Nov. 27, 1863” double-circle datestamp on double-rate cover to **Sieurville, France**, red New York credit and Calais transit datestamps and boxed “PD” handstamp, two sealed tears on backflap, addressee’s name crossed out, otherwise Fine, ex Judd..... E. 200-300



- 3212 ☒ **12c Black, 30c Orange (69, 71).** Tied by target cancels, 30c also tied by "New Orleans La. Apr. 30, 1863" double-circle datestamp on red and blue **Liberty and Flag Patriotic to Italy**, red New York credit and Calais transit datestamps, framed "PD" handstamp, backflap removed, edge tears and vertical crease clear of stamps, otherwise Fine, very scarce usage ..... E. 750-1,000
- 3213 ☒ **2c Black (73).** Tied by clear "New Orleans La. 13 Aug." (1863) circular datestamp on buff cover to "Judge Wm. Burnet/ Asst. Spec. Agt. Tsy. Dept./ In charge Plantations/ Natchez Miss.", New Orleans Commission Merchants corner card, Very Fine, rare use of C.S.A. period datestamp on circular-rate mail ..... E. 300-400
- 3214 ☒ **5c Red Brown (75).** Horizontal pair, tied by two strikes of blue "New Orleans La. Nov. 7, 1862" double-circle datestamp, third strike at right on cover to **Havana, Cuba**, red New York transit, "NA1" oval, ms. receipt docketing at left, sealed tear in backflap, pair has margin faults at right, otherwise Fine ..... E. 200-300
- 3215 ☒ **5c Red Brown, 10c Yellow Green (68, 75).** Tied by target cancels on buff cover to **Paris, France**, red New York credit and Calais transit datestamps, red framed "PD" handstamp, French "Nonreclamee" (unclaimed) handstamp on backflap and returned to New Orleans with blue "Dead Letter Office Jan. 6, 1863" circular datestamp and blue "Due 6 cents" with "6" in pencil, "3" in "1863" changed to "4" in pencil, Fine ..... E. 300-400
- 3216 ☒ **5c Red Brown, Brown (75, 76).** Two of former and one of latter, tied by target cancels, "New Orleans La. Aug. 13 '64" double-circle datestamp on cover to **Nantes, France**, red New York and Calais circular datestamps and boxed "PD" handstamp, addressee's last name cut out, otherwise Fine, the combination of Brown and Red Brown is very unusual ..... E. 300-400
- 3217 ☒ **New Orleans La. Apr. 21, 1865.** Double-circle datestamp and target on 10c Yellow Green entire (U40) to **Matamoros, Mexico**, large "2" and "½" Mexican due handstamps, small part of top backflap removed, Very Fine ..... E. 100-150

## INBOUND FOREIGN MAIL DURING FEDERAL OCCUPATION



- 3218 ☒ **SHIP.** Neat straightline in oval with "40 cts." in oval due handstamp on 1864 folded cover **from Havana, Cuba**, to New Orleans, ms. "per Morning Star" at top left, couple file folds and sealed tears, otherwise Fine, this is the only known example of these two handstamps on a cover to New Orleans ..... E. 500-750
- 3219 ☒ **ADV.** . Framed handstamp with rate removed, sharp "New Orleans La. Jun. 9 '64" double-circle datestamp on back of cover **from France to New Orleans**, France 80c Lake (19) tied by perfectly struck "520" in diamond of dots cancel, Bondy datestamp, red New York credit and framed "PD" handstamp, red "9" handstamp, ink spots along edges, otherwise Fine ..... E. 150-200
- 3220 ☒ **ADV.** . Framed handstamp with rate removed, "New Orleans La. Aug. 7, 1863" double-circle datestamp on back of cover **from Graudenz, Prussia**, to New Orleans, boxed "Graudenz 3 7 \* 7-8A" handstamp, Aachen transit and New York **depreciated currency** datestamp (30/35), left backflap removed with tiny repair and small diagonal sealed tear, otherwise Very Fine, a rare combination of advertised New Orleans markings and depreciated currency marking on incoming foreign letter ..... E. 400-500
- 3221 ☒ **Incoming Mail from Rome.** Two horizontal pairs of **Roman States 8b Black (9)**, large even margins all around, tied by grid in diamonds and "Roma 3 Giu '64" circular datestamp on folded cover to the Archbishop of New Orleans, red Marseilles transit and **Portland Me.** credit datestamps, Very Fine ..... E. 200-300
- 3222 ☒ **Incoming Mail from Rome.** Two horizontal pairs of **Roman States 8b Black (9)**, close to large margins, tied by grid in diamonds on folded cover to the Archbishop of New Orleans, "Roma 20 Giu '65" circular datestamp, red Marseilles transit and **Portland Me.** credit datestamps, red "9" handstamp, Very Fine ..... E. 200-300

## POST-WAR EXPRESSES



- 3223 ☒ **3c Rose (65).** Tied by target on cover carried by **military courier** to Thibodeaux and forwarded to Paincourt(ville) La., ms. "*The provost marshal will please forward to destination*" and "*Case of Lt. John Pugh*", bold "New Orleans La. Oct. 10 '65" double-circle datestamp, ms. "*Oct-14th 1865 J.Y.S(anders).*" at center, small faults, appears Fine, the only means of getting this letter to Paincourtville was military courier because regular mail service had not been re-established, the Sanders marking appears on the Wofford correspondence and may indicate some sort of mail handling..... E. 400-500
- 3224 ☒ **3c Rose (65).** Tied by target, overpaying 2c drop letter rate on cover with ms. "*Please drop this in city p.o./Aug. 7th 1865*" to Rev. Markham of New Orleans, ms. "*By Dr. McWhinney*", light soiling, otherwise Very Fine, scarce post-war usage ..... E. 400-500
- 3225 ☒ **Baldwin's South Louisiana Express, Brashear City, La.** Corner card on buff cover to New Orleans, 3c Rose (65), overpaying 2c drop letter rate, pen cancel and tied by target, matching "New Orleans La. Apr. 21 '65" double-circle datestamp, Fine, rare post-war express usage from outside New Orleans..... E. 500-750
- 3226 ☒ **Forwarded by Commercial Express Co.** Black on magenta label affixed at left of yellow cover to Gloucester Va., ms. "*Pd. 2/ H*" (two bits and agent's initial) at top left, "New Orleans La. Nov. 2, 1865" double-circle datestamp, Fine, very rare post-war express usage, ex Robson Lowe..... E. 500-750
- 3227 ☒ **Adams Express Co./Southern Express Co.** Adams "Internal Revenue Paid. Forwarded by Adams Express Co. from New Orleans, Louisiana" black on red label affixed to upper left corner of 3c Pink entire to Mobile Ala., Southern Express Company Aug. 10, 1869 black on red label for unclaimed letters affixed to back, ms. "*Paid 25*" and "*Rec'd June 5/1865*" at top, slightly reduced at left, appears Very Fine, choice "Three Gatherings" cover, ex Judd..... E. 200-300
- 3228 ☒ **Southern Express Company. New Orleans, La.** Black on red label affixed to large folded cover to Biloxi Miss., music and lyrics written on inside, ms. "*The Children's Hymnal by the Rev. Dr. Tucker, Rector of Holy Cross, Troy*" on backflap, ms. "*5*" rate marking, file fold just thru left margin of label, otherwise Fine and unusual ..... E. 300-400

END OF SALE—THANK YOU

# Bid Form

Sale 832  
Thursday, November 16, 2000

# 1

Please provide the following information:

NAME.....  
ADDRESS.....  
CITY/STATE/ZIP .....  
TEL. (DAY) ..... FAX.....  
E-MAIL.....

PADDLE #

*Do not write in box*

# 2

Have you purchased from us in the past 5 years? ☐ YES (if so, please go to Section 3)  
☐ NO (please provide a trade reference and bank information)

References:

Stamp Firm: ..... Telephone: .....

# 3

In the space provided below, enter the **lot number** from **Sale 832** and your corresponding bid. Please use **whole dollar amounts** only and enter the **maximum bid** you wish to have us execute on your behalf, according to the bidding increments (on other side of this form). **Your bid will NOT include the 10% buyer's premium.** We will advance the bidding at one increment over the next

highest bid; therefore, you may be awarded the lot at less than your maximum bid. Please do not use "plus" bids or "buy" bids. If you wish to bid on one lot **or** the other, indicate your "or" bid between lot number/bid entries and bracket your choices. If you wish to place a **bidding limit** on the total amount of your bids, please enter your limit in the space marked "Limit Bids".

☐ **LIMIT BIDS:** Check this box if you wish to limit the total amount of your bids (not including the 10% buyer's premium) in this sale. Your bids will be executed until your bidding

\$ .....

Lot	Bid	Lot	Bid	Lot	Bid
	\$		\$		\$

# 4

**AGREEMENT:** By signing this bid form, you agree to pay for purchases resulting from your bids, in accordance with the **Conditions of Sale** printed in the sale catalogue. You also agree to pay the 10% buyer's premium and any shipping costs (see reverse), which will be added to your successful bids, and any sales tax or use tax which may be due

on the total invoiced amount. It is understood that these bids will be executed by Siegel Auction Galleries as a courtesy to absentee bidders, but that no legal responsibility shall lie with the auctioneer or the firm if these bids are not executed. **You are responsible for your written bids, including any errors on your part.**



SIGNED ..... TODAY'S DATE .....

# 5

Please submit your bids promptly (telephone bids must be confirmed in writing).

**Mail to: Robert A. Siegel Auction Galleries, Inc.**  
65 E. 55th Street, New York, N.Y. 10022  
Telephone (212) 753-6421

**OR FAX YOUR BIDS: (212) 753-6429**

**Shipping Instructions, Bidding Increments and space for additional bids on other side of form**

## Additional Bids

Sale 832—November 16, 2000

Lot	Bid	Lot	Bid	Lot	Bid
	\$		\$		\$

## Shipping and Transit Insurance

We will be pleased to arrange for shipping and transit insurance for purchases in this sale (except those described as “floor sale only”). To expedite billing and delivery of lots to hundreds of buyers per sale, we use standard charges for postage and insurance, based on the invoiced total and mailing requirements (see schedule). The standard charges are sometimes slightly more or less than the actual postage, but we do not include any fees for our labor or packing costs. Therefore, we ask all buyers to remit the prescribed amount for shipping charges.

Transit insurance is provided in all cases, except when the buyer has furnished us with proof that insurance coverage is effective under another policy. Proof, in such cases, will be accepted in the form of a written certificate from the insurance carrier.

You are responsible for insurance charges, which will be added to your invoice. This coverage is provided for our mutual protection against theft or loss in transit.

## Current Postage & Insurance Charges

Invoice Total	Shipping Method	Charges
Up to \$1,000	Certified Mail or Insured Priority	\$10.00
\$1,000-10,000	Fedex or Express Mail	\$16.00
\$10,000-25,000	Fedex or Express Mail	\$22.00
Over \$25,000	Fedex or Express Mail	\$22.00 plus insurance at \$1 per \$1,000 value over \$25,000
Foreign Destinations (any value)	Registered or Express mail	\$10.00 plus insurance at \$2 per \$1,000 value
Bulk Lots	UPS Preferred	By weight and value (min. \$25.00)

2/95

## Bidding Increments

The auctioneer may regulate the bidding at his discretion. However, to assist absentee bidders in establishing their maximum bid for each lot, the increments shown at right will be used in most cases. We recommend that written bids conform to these increments (those which do not will be reduced to the next level).

Up to \$140	\$5	\$3,000-7,000	\$250
\$140-300	\$10	\$7,000-20,000	\$500
\$300-700	\$25	\$20,000-30,000	\$1,000
\$700-1,400	\$50	\$30,000-75,000	\$2,500
\$1,400-3,000	\$100	\$75,000 up	\$5,000

# PRICES REALIZED FOR SALE 832---11/16/2000

## The Hubert C. Skinner Collection of New Orleans

Robert A. Siegel Auction Galleries, Inc.  
60 East 56th Street, 4th Floor, New York, NY 10022  
Tel (212) 753-6421 Fax (212) 753-6429

Lot#	Realized	Lot#	Realized	Lot#	Realized	Lot#	Realized	Lot#	Realized
3001	1,100	3046	1,700	3089	400	3137	1,150	3182	280
3002	3,000	3047	1,600	3091	600	3138	475	3183	260
3003	525	3048	2,500	3092	160	3139	200	3184	230
3004	400	3049	675	3095	210	3140	4,750	3185	1,600
3005	1,100	3050	800	3096	375	3141	5,750	3186	240
3006	750	3051	1,700	3097	210	3142	2,600	3187	575
3007	200	3052	3,250	3098	2,200	3143	350	3190	280
3008	180	3053	650	3099	650	3144	280	3192	120
3009	325	3054	325	3101	950	3145	350	3193	75
3010	200	3055	270	3103	600	3146	75	3194	85
3011	1,250	3056	325	3104	120	3147	170	3195	115
3012	200	3057	290	3105	180	3149	125	3198	475
3013	1,700	3058	375	3106	200	3150	300	3199	750
3014	800	3059	1,100	3107	200	3151	450	3200	425
3015	850	3060	13,000	3108	500	3153	375	3202	100
3016	250	3061	7,500	3109	375	3154	6,000	3204	550
3017	250	3062	9,000	3110	250	3155	7,000	3205	290
3018	3,500	3063	5,250	3111	200	3156	2,600	3206	200
3019	750	3064	1,500	3112	210	3157	2,000	3207	100
3020	9,500	3065	600	3113	220	3158	10,500	3208	110
3021	1,050	3066	4,250	3114	120	3159	2,400	3209	450
3022	150	3067	1,600	3115	1,750	3160	3,250	3210	100
3023	5,000	3068	750	3116	170	3161	3,000	3212	750
3024	6,500	3069	625	3117	200	3162	700	3213	160
3025	2,100	3070	500	3118	375	3163	625	3214	350
3026	1,900	3071	28,000	3119	160	3164	375	3215	425
3027	4,500	3072	9,500	3120	160	3165	500	3216	325
3028	2,100	3073	525	3121	180	3166	2,600	3217	140
3029	1,350	3074	3,250	3122	1,300	3167	1,100	3218	900
3030	105	3075	220	3123	16,500	3168	350	3221	800
3031	300	3076	260	3124	7,500	3169	325	3223	525
3032	120	3077	600	3125	2,000	3170	280	3224	325
3033	80	3078	150	3126	2,600	3171	210	3225	450
3034	140	3079	150	3127	1,300	3172	800	3226	950
3035	325	3080	475	3128	900	3173	350	3227	550
3036	140	3081	250	3129	350	3174	200	3228	375
3037	100	3082	325	3130	425	3175	250		
3038	200	3083	240	3131	240	3176	375		
3040	1,100	3084	210	3132	400	3177	375		
3041	1,050	3085	9,000	3133	400	3178	450		
3043	900	3086	3,500	3134	100	3179	500		
3044	4,750	3087	1,500	3135	2,200	3180	260		
3045	2,100	3088	1,000	3136	950	3181	950		