

**CATALOGUE**  
of the  
**George Walcott Collection**  
of  
**CONFEDERATE STATES**  
**POSTMASTERS**  
and  
**GENERAL ISSUES**

**TO BE SOLD AT AUCTION**  
**Without Reserve by Order of the Executors**  
**of the Estate**

**THURSDAY, MAY 23rd, 1935**  
**AT 2 P. M.**

---

**AT THE COLLECTORS CLUB**  
**30 East 42nd Street, New York, N. Y.**

---

**WALTER S. SCOTT, Auctioneer**

---

**ROBERT LAURENCE**  
**30 EAST 42nd STREET      NEW YORK CITY**

**ROOMS 320-321**

**Telephone MUrray Hill 6 - 0726**

## Terms of Sale

— :: —

- 1 The terms of the sale are strictly cash, all buyers being expected to pay for lots within two days after receipt. Special arrangements must be made before the sale should a longer time be desired.
- 2 Parties favorably known to the trade, or such as furnish undoubted business references, may have their purchases forwarded by registered mail, but all others will be notified and their lots mailed on receipt of remittance.
- 3 Lots not taken up within seven days from date of sale may be resold and losses arising from such sale charged to defaulter.
- 4 Right is reserved to withdraw any lot prior to the sale.
- 5 Any lot the description of which is incorrect is returnable only within 3 days from receipt.
- 6 No lots may be returned by purchasers who have had the opportunity to examine them before the sale.
- 7 All bids are per lot and not per piece, and the highest bidder to be the purchaser.
- 8 *I charge no commission* for buying at my sales.
- 9 A minimum charge of 25 cents will be made for mailing and insurance.

Carefully *Hand Priced Catalogue* may be had for this sale for \$2.00.

— :: —

**ROBERT LAURENCE**

**30 East 42nd Street**

**ROOM 320-321**

**New York, N. Y.**



---

**CATALOGUE**  
of the  
**George Walcott Collection**  
of  
**CONFEDERATE STATES**  
**POSTMASTERS**  
and  
**GENERAL ISSUES**

**TO BE SOLD AT AUCTION**

**Without Reserve by Order of the Executors  
of the Estate**

**THURSDAY, MAY 23rd, 1935**  
**AT 2 P. M.**

---

**AT THE COLLECTORS CLUB**  
**30 East 42nd Street, New York, N. Y.**

---

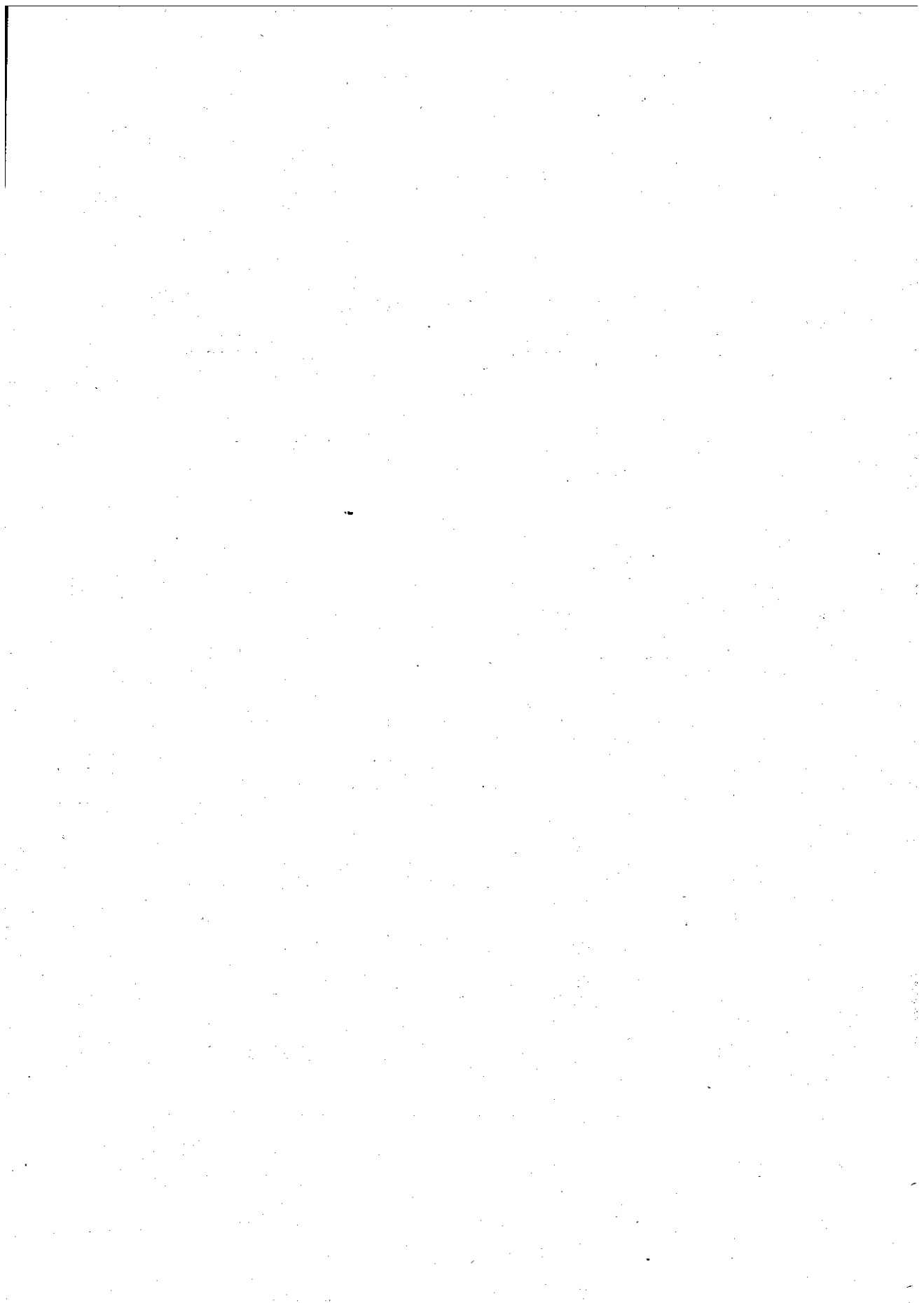
**WALTER S. SCOTT, Auctioneer**

---

**ROBERT LAURENCE**  
**30 EAST 42nd STREET      NEW YORK CITY**

**ROOMS 320-321**

**Telephone MUrray Hill 6-0726**



## INTRODUCTION

---

The late George Walcott who gathered all the items listed in this sale, was a natural collector right from his boyhood days and had a very keen knowledge of stamps. Although his stamp collections, from the beginning were of a general nature, he gradually dropped those various sections, until Patriotic covers and Confederates were his main consideration.

His Patriotic covers, which I sold late in January, was by far the largest collection of Patriotic covers known.

This collection of Confederates, that I am offering now, was carefully gone over and mounted by the well known expert Mr. Edward S. Knapp. It has been listed by my friend, Mr. Charles J. Phillips, as the greatest collection ever gathered together. It is matchless in uncut and reconstructed sheets and panes.

There is a sheet of 100 5c green, Lithographed, the only one known, also a sheet of 100 10c Hoyer & Ludwig, sheet of 100 Paterson, a block of 197 5c blue Lith., a sheet of 100 2c green, reconstructed sheet of 10c Rose, etc. In rare cancellations on and off cover and varieties it abounds. All in all with a **Matchless Lot of Provisional Issues**. This sale is the largest and most important sale of Confederate stamps ever held in this country or abroad. For this reason I invite all dealers and collectors to give this sale the most careful attention, and consideration, as being a unique opportunity to obtain these rare classics of our most historical period of our national history.

ROBERT LAURENCE





*George Walcott*

# CATALOGUE

All stamps which are preceded by a ★ are unused, while ○ signifies used, and ☒ indicates an original cover. Original gum (o. g.) is not to be expected on U. S. stamps up to 1890 unless specially mentioned. Numbers and catalogue value refer to Scott's 1935 Standard catalogue, Scott's Specialized U. S. catalogue, or Scott's catalogue of Air Post Stamps. Where other catalogues are quoted, they are mentioned by name. Do not expect V. F. when description says Fine.

## CONFEDERATE STATES POSTMASTER'S PROVISIONALS

Scott			Dietz	Scott
1	1B	ALBANY GA. 5c greenish blue on white .....	100.00	
2		ANDERSON C. H. S. C. PAID 10c. From Ferrari's collection .....	25.00	
3	2A	ATHENS GA. 5c VERY RARE, Tête bêche pair on cover .....		750.00
3A	2	— 5c dull purple, bright copy, tied on cover ...		125.00
3B	2	— 5c dull purple. Superb copy with very wide margins .....		125.00
3C		ATLANTA GA. PAID 5c black type 1, on fine Patriotic envelope. Very Rare .....		
4	3B	— PAID 5c type 1, on white Corner Card envelope. V. F. ....	25.00	
5	6	— PAID 5c type 1, on V. F. amber envelope ...	25.00	
6	4	— PAID 5c type 1, on V. F. Corner Card buff envelope .....	25.00	
7	7	— PAID 5c type 1, on fine orange envelope .....	25.00	
8	9	— PAID 5c type 2, on V. F. Corner Card envelope .....	50.00	
9	10A	— PAID 10c type 2, on orange envelope. Rare.	125.00	
10	10	— PAID 10c type 2, on white envelope .....	125.00	
11		AUSTIN TEX. PAID 10c on orange, State Dept. envelope .....	50.00	
12		— PAID 10c on white, State Dept. envelope ....	50.00	
13	12B	AUTAUGAVILLE ALA. PAID 5c black on white, on V. F. upper half of envelope. VERY RARE.		500.00
14	13	★ BATON ROUGE LA. 2c GREEN, VERY FINE AND RARE. UNUSED COPY FROM FERRARI'S COLLECTION .....		1500.00
15	13	○ — 2c GREEN. WAS LISTED IN GEORGE WALCOTT'S COLLECTION AS THE FINEST USED COPY THAT EXISTS .....		900.00
16	14	★ — 5c very fine unused copy .....		200.00
17	14	○ — 5c V. F. wide margins copy used on piece of cover .....		85.00
18	14	○ — V. F. used copy .....		85.00
19	14	○ — V. F. used copy .....		85.00
20	14	○ — V. F. used copy, canc. PAID. Rare .....		85.00

## CONFEDERATE STATES—POSTMASTER'S PROVISIONALS

	Scott		Dietz	Scott
21	14	○ — V. F. used and wide margins copy .....		85.00
22	14A	○ — V. F. with error (Mc Cernick) rare .....		250.00
23	14A	○ — V. F. copy canc. PAID with error (Mc Cernick.) Very Rare .....		250.00
24	14	— 5c V. F. copy on cover .....		—
25	14	— 5c V. F. copy on cover .....		—
26	15	— 5c cut close at right, but very rare on cover.		250.00
26A	18	★ BEAUMONT TEXAS, UNUSED, 10c IN BLACK ON PINK, DAMAGED AT LEFT MARGIN BARELY TOUCHING DESIGN. FINE CONDITION FOR SUCH A RARITY .....		1000.00
27		BLUFFTON S. C. PAID 5c on amber. Very rare. From Ferrari's Collection .....		—
28	19A	CANTON MISS. 5c black on buff envelope .....		45.00
29	19A	— 5c black on buff envelope .....		45.00
30		CHATTANOOGA TENN. PAID 2. From Ferrari's collection. "It shows actual preparation of provisional envelopes to meet the drop letter rate. VERY RARE .....		—
31		— PAID 5 on buff. V. F. ....		—
32	21	CHARLESTON S. C. 5c Env. in blue on white. Very fine .....		25.00
33	20	— Fine copy on cover .....		—
34	20	— Very fine copy on cover .....		—
35	20	★ — 5c V. F. unused copy .....		75.00
36	20	○ — 5c V. F. copy on piece of cover .....		65.00
37	20	○ — 5c V. F. used copy on piece of cover .....		65.00
38	20	○ — 5c V. F. used copy on piece of cover .....		65.00
39	20	○ — Fine used copy .....		65.00
40	20	○ — 5c V. F. used copy on piece of cover .....		65.00
41	26	COLUMBIA S. C. 5c blue on white. V. F. ....		25.00
42	29	— 5c blue on amber. V. F. ....		40.00
43	30	— 5c blue on buff. V. F. ....		35.00
44	32B	— 5c blue on buff, seal on reverse. V. F. ....		100.00
45	32	— 5c blue on white, seal on reverse .....		100.00
46	33A	COLUMBUS GA. 5c blue on orange. V. F. ....		75.00
47	33B	— 5c blue on amber. V. F. ....		75.00
48	33C	— 10c red on white on damaged envelope .....		150.00
49		DALTON GA. 5c black on manila. V. F. ....	50.00	
50		— 5c black on buff. V. F. ....	50.00	
51		— 5c black on orange. V. F. ....	50.00	
52		— 10c black on white. V. F. ....	50.00	
53		— 10c black on manila. V. F. ....	50.00	
54	35	DANVILLE VA. 5c black on buff. V. F. ....		250.00
55		— 10c RED ON ORANGE. FROM FERRARI'S COLLECTION. LISTED BY CHAS. J. PHILLIPS IN HIS ARTICLE IN STAMPS AS ONLY ONE OTHER KNOWN TO EXIST ....		2000.00
56	40	★ FREDERICKSBURG VA. 5c blue on bluish, fine wide margins pair, one stamp thin .....		60.00
57	40	★ — 5c blue. V. F. unused copy .....		30.00
58	40	★ — 5c blue. V. F. unused copy .....		30.00



	Scott		Dietz	Scott
59	40	○ — 5c blue, wide margins, small closed tear. Rare used . . . . .		75.00
60	40	○ — 5c blue. V. F. copy used . . . . .		75.00
61	41	★ — 10c red on bluish. V. F. wide margins copy. . . . .		100.00
62	41	★ — 10c red. V. F. copy . . . . .		100.00
63	41	★ — 10c red. V. F. . . . .		100.00
64	41	★ — 10c red. V. F. copy with right sheet margin. . . . .		100.00
65		GALVESTON TEX. 10c black on bluish. Dietz type 4. Converted canceller. Rare . . . . .	100.00	
66	50EE	GREENSBOROUGH ALA. PAID 10c, converted canceller in double line oval. Very rare . . . . .		—
67	50EE	— PAID 10c. Very rare converted canceller, single line oval over PAID 5c. Very unusual and rare . . . . .		—
67A	50F	GREENSBORO N. C. PAID 10c in red. Only two or three exist. Very rare . . . . .		—
68	50B	GONZALES TEX. 10c GOLD ON GARNET, DAMAGED BUT STILL A VERY RARE AND DESIRABLE PIECE . . . . .		1500.00
69	50C	— 10c GOLD ON BLACK, A FINE COPY ON PIECE OF COVER . . . . .		1100.00
70		HOUSTON TEX. PAID 5c red on buff converted canceller. V. F. . . . .	75.00	
71		— PAID 5c red on orange. V. F. . . . .	75.00	
72		— PAID 10c in ink over PAID 5c in red. V. F. . . . .		—
73	56A	INDEPENDENCE TEX. FINE COPY OF THIS RARITY ON COVER . . . . .		1000.00
73A	56D	JACKSON MISS. 5c black on white. V. F. condition . . . . .		75.00
73B		— 10c black on orange used over 5c. Only one other known . . . . .		—
74		KNOXVILLE TENN. 5c brick red. Very fine copy. . . . .		300.00
74A	67	— 5c blue on white. Rare . . . . .		100.00
75		LAGRANGE TEX. PAID 5c on white. Very fine . . . . .	100.00	
76		— PAID 10c on orange. Very rare . . . . .	100.00	
77		— PAID 10c on white. Somewhat soiled . . . . .	100.00	
78	69	LENOIR N. C. 5c blue & orange on V. F. cover . . . . .		300.00
79	70	LEXINGTON MISS. PAID 5c on orange. V. F. and rare . . . . .		100.00
80	71	○ LEVINGSTON ALA. 5c BLUE, A VERY FINE COPY OF THIS MOST BEAUTIFUL AND POPULAR STAMP OF THE PROVISIONALS . . . . .		2000.00
81	72	LYNCHBURG VA. 5c blue. V. F. copy with short transfer at bottom on V. F. illustrated cover. . . . .		175.00
82	72	○ — 5c blue. Very fine used copy . . . . .		175.00
83	72	○ — 5c blue. Fine used copy . . . . .		175.00
83A	74	— 5c black on lemon envelope. V. F. and quite rare . . . . .		150.00
84	88	○ MEMPHIS TENN. 2c blue. V. F. used copy. Very rare . . . . .		200.00
85	88	○ — 2c blue. A fine copy used on a piece of cover, a rare deep shade . . . . .		200.00
86	88	★ — 2c blue. V. F. wide margins copy . . . . .		5.00

Scott			Dietz	Scott
87	88	— 2c blue. V. F. copy .....		5.00
88	88	★ — 2c blue. V. F. copy with wide sheet margins.		5.00
89	88	★ — 2c pale blue. V. F. copy with right sheet margin .....		5.00
90	88	★ — 2c blue. V. F. copy .....		5.00
91	88	★ — 2c deep blue. V. F. copy .....		5.00
92	88	★ — 2c blue. V. F. block of fifteen. Very interesting misprint variety .....		—
93	88	★ — 2c deep blue. V. F. copy .....		5.00
94	88	★ — 2c blue. V. F. copy .....		5.00
95	88	★ — 2c blue. V. F. block of four .....		—
96	88	★ — 2c blue. V. F. block of four .....		—
97	88	★ — 2c blue. V. F. block of four .....		—
99	90	★ MEMPHIS TENN. 5c rose. V. F. copy .....		10.00
100	89	★ — 5c red. V. F. copy .....		10.00
101	90	★ — 5c rose. V. F. copy .....		10.00
102	90	★ — 5c rose. V. F. copy .....		10.00
103	89	★ — 5c red. V. F. copy .....		10.00
104	90	★ — 5c red. V. F. pair .....		20.00
105	89	○ — 5c red. Very rare used block of six with a crease .....		—
106	90	○ — 5c red. V. F. used copy .....		20.00
107	90	★ — 5c red. V. F. used copy .....		20.00
108	90	○ MEMPHIS TENN. 5c red. V. F. used copy .....		20.00
109	90	○ — 5c red. V. F. used copy .....		20.00
110	90	— 5c red. V. F. copy on rare Patriotic cover. A GEM for any Patriotic collection .....		—
111	90	— 5c red. Fine copy on V. F. Patriotic cover. Rare .....		—
111A	91	MEMPHIS TENN. 5c ENV. deep red on white. V. F. and very rare .....		200.00
112		MARIETTA GA. PAID 5c black on orange .....	75.00	
113		MACON GA. PAID 5c black converted canceller on orange. Very rare .....		—
114	93	MILLEDGEVILLE GA. PAID 5c black on white. V. F. condition .....		—
115	93	— PAID 5 black on white. V. F. condition .....		—
115A	95A	— PAID 10c in black on manila. Only one other copy recorded .....	100.00	
116	97E	MONTGOMERY ALA. 5c blue covered by 5c green, #200 tied with MONTGOMERY ALA. canc. Most unusual and rare item .....		60.00
117	97E	— 5c blue on white. V. F. and rare .....		60.00
118	97	— 5c red on rose envelope. V. F. ....		40.00
119		— 5c red on orange. V. F. ....		40.00
120		— 5c red on white. V. F. ....		40.00
121		— 5c red on V. F. corner card envelope .....		40.00
122	97	MONTGOMERY ALA. 10c red on orange and a cancelled 5c red on same cover. Very unusual and very rare .....		125.00
123	97	— 10c red on white envelope. V. F. ....		125.00
124	97	— 10c blue on amber on V. F. Conf. States Dept. envelope. Very rare .....		150.00

CONFEDERATE STATES—POSTMASTER'S PROVISIONALS

9

	Scott		Dietz	Scott
125	96	<b>MOBILE ALA. 2c black, fine copy tied on cover re-addressed with Pmk. of BROCKVILLE MISS. and odd PAID 5. Very interesting cover . . .</b>		<b>150.00</b>
126	96	— 2c black, fine copy tied on small neat cover . .		150.00
127	96	○ — 2c black. V. F. copy, margins all around . . .		150.00
128	96	○ — 2c black, fine bright copy tied on small piece of cover . . . . .		150.00
129	96	○ — 2c black. V. F. copy, wide margins . . . . .		150.00
130	97	○ — 5c blue. V. F. copy, wide margins, also left sheet margin . . . . .		25.00
131	97	○ — 5c blue. V. F. copy . . . . .		25.00
132	97	○ — 5c blue. V. F. PAIR, bright color and lightly canc. . . . .		—
133	97	○ — 5c blue. V. F. pair TOP SHEET MARGIN, lightly canc. on small piece of cover . . . . .		—
134	97	— 5c blue. V. F. copy with bottom sheet margin showing PART OF IMPRINT, tied on V. F. cover . . . . .		—
135	97	— 5c blue. V. F. pair, tied on V. F. cover . . . . .		—
136	98	★ <b>NASHVILLE TENN. 3c red. V. F. copy . . . . .</b>		—
137	98	★ — 3c red. V. F. reconstructed sheet of five stamps . . . . .		—
138	102	★ — 5c violet brown, fine O. G. pair with left sheet margin. Right stamp V. F. Left stamp has been severed through on the left margin and put together again . . . . .		<b>500.00</b>
139	102	★ — 5c bright violet brown. V. F. copy . . . . .		<b>250.00</b>
140	102	★ — 5c violet brown, fine copy with small nick at right top . . . . .		250.00
141	103	○ — 10c dark green. V. F. and rare stamp . . . . .		<b>600.00</b>
142	103	○ — 10c green. V. F. and very rare stamp . . . . .		<b>600.00</b>
142A	103B	— <b>PAID 5c blue on orange. Only two others recorded . . . . .</b>		—
143	104	★ <b>NEW ORLEANS LA. 2c blue. V. F. unused copy . .</b>		15.00
144	104	★ — 2c blue. Fine unused copy . . . . .		15.00
145	104	★ — 2c blue. Fine unused copy . . . . .		15.00
146	105	★ — 2c red. V. F. unused copy . . . . .		15.00
147	105	★ — 2c red. V. F. unused copy . . . . .		15.00
148	105	★ — 2c light red. V. F. unused copy . . . . .		15.00
149	105	★ — 2c deep red. V. F. unused copy . . . . .		15.00
150	105	★ — 2c deep red. V. F. unused copy . . . . .		15.00
151	106	★ — 5c brown. V. F. unused copy . . . . .		20.00
152	106	★ — 5c deep brown. V. F. unused copy . . . . .		20.00
153	106	○ — 5c brown. V. F. used copy . . . . .		15.00
154	106	○ — 5c brown. V. F. wide margin used copy . . . .		15.00
155	106	○ — 5c brown. V. F. used copy . . . . .		15.00
156	109	○ — 5c brown on blue. V. F. used copy . . . . .		15.00
157	109	○ — 5c brown on blue. V. F. copy. Canc. PAID.		15.00
158	109	○ — 5c brown on blue. Wide margin copy, canc. PAID. Slightly thin . . . . .		<b>15.00</b>
159	109	○ — 5c brown on blue. V. F. copy. Cancelled with rare N. O. P. O. PAID 5c . . . . .		—



	Scott		Dietz	Scott
160	106	★ — 5c brown, second printing. V. F. unused copy		15.00
161	106	★ — 5c brown. V. F. unused copy		15.00
162	106	★ — 5c brown. Fine unused copy		15.00
163	106	★ — 5c brown. V. F. unused copy		15.00
164	106	— 5c brown on blue. (2) V. F. copies tied on cover with PAID canc.		—
165	106	— 5c brown on blue. V. F. pair on Patriotic cover. VERY RARE		—
166		NEW ORLEANS LA. VERY FINE AND RARE PROVISIONAL ENV.	100.00	
167	112	PETERSBURG VA. 5c red. V. F. wide margins copy tied on front of cover		85.00
168	112	○ — 5c RED, A RECONSTRUCTED SHEET, WITH EIGHT V. F. WIDE MARGINS COPIES, ALSO A V. F. PAIR. A VERY RARE PIECE.		950.00
169	115	RALEIGH N. C. PAID 5c in red on white envelope. V. F.		40.00
170	116	— PAID 5c in red on amber. V. F.		40.00
171	117	— PAID 5c in red on orange. V. F.		40.00
172	118	— PAID 5c in red on straw. V. F.		40.00
173	119B	RICHMOND TEX. PAID 5c in red on amber. V. F.		75.00
174		— PAID 5c on folded letter. V. F. and rare		90.00
175	119E	— PAID 10c on orange. V. F. and rare		90.00
176	121B	SALEM N. C. PAID 5c in black on orange. V. F. and rare		85.00
177	121	— PAID 5c in black on buff. V. F. and rare		85.00
178	129	SELMA ALA. PAID 5c in black on orange. Very rare		150.00
179	130	— PAID 5c in black on buff. Very rare		150.00
180	135	STATESVILLE N. C. PAID 5c in black on straw. Very rare		100.00
181		SPARTA GEO. PAID 5c in red on orange	100.00	
182		TALBOTTON GA. PAID 5c in black on white. Rare	75.00	
183		— PAID 10c in black on lemon. V. F. and very rare	100.00	
184		— PAID 10c in black on home made straw envelope. V. F.	100.00	
184A	136	★ TELlico PLAINS TENN. 5c red, unused. V. F. and rare copy		200.00
184B	137	★ — 10c red, unused, fine copy		350.00
184C	136-7	★ — 5c red and 10c red (Se tenant). V. F. and rare unused pair		550.00
185		THOMASVILLE GA. PAID 5c black on orange. V. F.		60.00
186		— PAID 5c in black on amber. V. F.		60.00
187		— PAID 5c on buff. V. F.		60.00
187A	138	TUSCALOOSA ALA. PAID 5c black on white. V. F. and rare cover		—
188		TUSCUMBIA ALA. PAID 5c in black on buff. V. F. and rare		75.00
189		— PAID 10c in black on white. Very rare		—
190		WARRENTON GA. PAID 5c in black on orange. V. F.	75.00	

**CONFEDERATE STATES****GENERAL ISSUES****5c GREEN LITHOGRAPH.**

191	★	Wide margins block of four. O. G., slightly creased, unnoticeable on face. Stone 1 . . . . .	100.00
192	★	V. F. O. G. block of five, right sheet margin. Stone 1 . . . . .	112.00
193	★	Fine O. G. block of six, pale green shade. Two stamps have light thin spot . . . . .	150.00
194	★	Fine O. G. pair . . . . .	35.00
195	★	Fine O. G. pair. Thin . . . . .	35.00
196	★	V. F. and <b>RARE LIGHT GREEN BLOCK</b> of fourteen. No gum. Stone 1. A <b>SPLIT</b> . Bottom strip of three is from a different unit . . . . .	—
197	○	V. F. used vert. pair, wide margins lower stamp, with <b>flaw in C of Confederate</b> . . . . .	—
198	○	Fine used vert. pair with <b>flaws in three different places on lower stamp</b> . . . . .	—
199	○	Beautiful horizontal pair. One stamp has very minute thin spot. . . . .	—
200	○	V. F. copy, tied to small piece of cover . . . . .	6.00
201	○	Fine copy tied to piece of cover, double line circle <b>ASHLAND VA.</b> . . . .	6.00
202	○	V. F. copy tied to piece of cover with <b>PENSACOLA FLA.</b> Stone 2 . . . . .	8.00
203	○	Superb used copy . . . . .	6.00
204	★	<b>VERY RARE HOR. pair</b> , bottom sheet margin with <b>IMPRINT</b> . Left stamp has <b>variety with curl back of head</b> . . . . .	—
205	○	V. F. HOR. pair tied on piece of cover with rare <b>WASHINGTON TEXAS</b> canc. . . . .	24.00
206	○	V. F. HOR. pair tied to piece of cover with blue <b>PETERSBURG VA.</b> canc. . . . .	18.00
207	○	V. F. copy. Stone 2 tied on piece of cover with <b>PORT GIBSON MISS.</b> canc. . . . .	8.00
208	○	V. F. HOR. pair, wide margins, tied on piece of cover with <b>RODNEY MISS.</b> canc. . . . .	18.00
209	○	V. F. pair, on piece of cover, lightly canc. with <b>TUDOR HALL VA.</b> . . . .	18.00
210	○	Very rare <b>double print</b> all across bottom. The most unusual thing I have ever come across on this stamp . . . . .	—
211	★	<b>5c GREEN. VERY FINE PANE OF 100, THE LEFT PANE STONE 1, WIDE MARGINS ALL AROUND. THE ONLY ONE KNOWN.</b> . . . .	2500.00
212		<b>5c GREEN. VERY FINE, RECONSTRUCTED SHEET OF 50, STONE 2. FOUR STAMPS MISSING. #5, #10, #22 AND #27</b> . . . . .	—

**5c GREEN ON COVERS.**

213		V. F. and rare pair, olive green. Stone A, tied on V. F. cover with <b>MONTGOMERY ALA.</b> town canc. . . . .	35.00
214		V. F. pair, tied on V. F. cover with double circle <b>VA.</b> canc. . . . .	18.00
215		V. F. and bright pair on V. F. lemon envelope. Very attractive . . . . .	18.00
216		Wide margins copy, tied on V. F. cover with <b>CHARLESTON S. C.</b> town canc. . . . .	9.00

217	V. F. copy from plate 1. Very rare shade. Canc. with black grid..	9.00
218	Fine copy. Stone A, short transfer at right, tied on V. F. cover....	—
219	V. F. copy, tied on V. F. cover with RARE BOWLING GREEN KY. blue canc. ....	—
220	Fine copy, tied on cover with ALLENTON TEXAS town cane. Very rare .....	45.00
221	V. F. copy used on cover. Pmk. RARE FISHERVILLE VA. R. R....	—
222	Fine vert. pair, on cover with RED TOWN SMITHFIELD VA. ....	—
223	V. F. copy, tied on cover with RED TOWN SMITHFIELD VA. canc..	—
224	Fine copy on V. F. cover, cane. with RED NUMERAL 5. Pmk. in red CAMDEN S. C. The only one I have ever seen .....	—
225	Fine copy, tied on cover with black town cane. Pmk. in red oval DUE 5. Rare .....	—
226	V. F. TURN COVER with fine 5c lithograph used inside and outside. Both tied on front with BIG LICK VA. Very rare .....	—
227	V. F. 5c green used in combination with 5c London print. Both stamps tied with VICKBURGH MISS. cane. Very attractive and rare cover .....	—
228	V. F. copy, tied on illustrated envelope, picture of railroad train....	—

## ON U. S. ENTIRE ENVELOPES.

229	V. F. copy, tied over 3c. Entire envelope of 1853 with blue town NASHVILLE TENN. cane. Rare .....	—
230	Fine copy, tied over 3c 1860, patent line Nesbitt envelope. Rare...	—

## ON COLLEGE ENVELOPES.

231	Fine copy, cane. with rare TUSCALOOSA STAR, on V. F. envelope of UNIVERSITY of ALABAMA .....	—
232	V. F. copy, light green, tied on FARMVILLE VA. FEMALE COLLEGE envelope .....	—
233	V. F. copy, tied on V. F. cover with blue grid. Pmk. UNIVERSITY of VIRGINIA VA. ....	—

## ON PATRIOTIC COVERS.

234	Fine pair, tied on Patriotic cover, design Laurence Cat. #3183, with note under flag from Francis S. Bartow commander of brigade of Georgia Reg "I go to illustrate Georgia". Very rare .....	—
235	V. F. copy, tied on Pat. cover with town cane. MEMPHIS TENN. Also ADV. in rectangular box. Patriotic in a flag with verse at bottom, with large letter T for Tennessee in middle of stars. Rare .....	—
236	V. F. copy, bottom sheet margin, tied on V. F. Pat. cover with black town cane. CORINTH MISS. Design waving flag with eleven stars .....	—
237	Fine copy, tied on V. F. cover Laurence Cat. #3152. Very neat cover .....	—
238	V. F. copy, tied on V. F. Pat. cover. Laurence cat. #3173. A GEM for condition .....	—
239	Fine copy, stone A, tied with black town cane. CUTHBERT GA. on V. F. Conf. flag. Not in Laurence Pat. cat. ....	—
240	Fine copy, tied on V. F. Pat. cover. Laurence cat. #3142, but different verse .....	—
241	Fine light green copy, tied on V. F. Pat. cover. Laurence cat. #3161, but different verse .....	—



- 242 Fair copy, on fine Pat. cover. Laurence cat. #3173 ..... —  
 243 V. F. olive green copy, tied on with blue canc. on fine Pat. cover.  
 Laurence cat. #3191 ..... —  
 244 Fine copy, tied with JACKSON TEN., date inverted, on rare regi-  
 mental Conf. Pat. (7th Reg. Miss. Vol.) and flag in colors ..... —

**10c 1861-2 LITHOGRAPHED.****HOYER & LUDWIG OFF COVER.**

- 245 ★ Superb O. G. PAIR with bottom sheet margin ..... 75.00  
 246 ★ V. F. BLOCK OF FOUR O. G. Very difficult piece to procure ..... 175.00  
 247 ★ V. F. looking pair with a thin spot ..... 75.00  
 248 ○ Very wide margins copy, slightly thin with rare TUSCALOOSA STAR ..... —  
 249 ○ V. F. used pair, lightly cancelled. One stamp shows light crease.  
 Very rare and desirable item ..... 200.00  
 250 ○ V. F. copy, bottom sheet margin cancelled in red, with double circle  
 BUCK EYE GEO. Very rare ..... —  
 251 ○ Superb copy, lightly cancelled with bottom sheet margin ..... —  
 252 ○ Superb copy with two flaws, tied on piece of cover. Very unusual  
 and rare ..... —  
 253 ★ SHEET OF 100, WITH IMPRINT AT BOTTOM "LITHOGRAPH OF  
 HOYER & LUDWIG RICHMOND VA.", LIGHTLY CREASED IN  
 FOUR PLACES. VERY FINE ON FACE. THE ONLY ONE  
 KNOWN ..... 4,375.00

**J. T. PATTERSON OFF COVER.**

- 254 ★ Superb block of ten ..... 250.00  
 255 ★ V. F. O. G. block of nine with bottom sheet margin. One stamp on  
 top row has a thin spot ..... 208.00  
 256 ★ Superb O. G. block of six, deeper shade, bottom sheet margin ..... 150.00  
 257 ★ V. F. O. G. block of four ..... 100.00  
 258 ★ V. F. pair, greenish blue with wide margins between stamps ..... 35.00  
 259 ★ V. F. O. G. pair ..... 35.00  
 260 ★ V. F. O. G. copy, deep shade ..... —  
 261 ★ V. F. wide margin copy ..... 13.50  
 262 ○ V. F. copy, wide margins, deep color, pin head thin spot on right  
 margin ..... 8.00  
 263 ○ Superb copy, sharply printed, tied to piece of cover with QUINCY  
 FLOR. Rare ..... —  
 264 ○ Fine copy, canc. with blue town canc. .... 10.00  
 265 ○ V. F. PAIR, canc. RICHMOND ..... 125.00  
 266 ○ Very rare copy, canc. with ESTELL SPRINGS N. C. R. R. .... 85.00  
 267 ○ V. F. copy, light shade ..... 8.00  
 268 ○ V. F. copy, deep shade ..... 8.00  
 269 ○ V. F. copy, stone Y. canc. blue ..... 10.00  
 270 ○ V. F. copy, stone Y. canc. PORT HUDSON LA. .... 10.00  
 271 ★ SHEET OF 100, PARTLY CREASED AND STAINED ..... 2500.00

**HOYER & LUDWIG ON COVER.**

- 272 Left sheet margin pair, slightly damaged, tied on small cover with  
 MOBILE ALA. addressed to Mobile, drop letter with 20c postage,  
 why? ..... 200.00

273	Superb copy, tied on cover 4x9, with ATLANTA GA. Also due 10 in blue .....	15.00
274	Superb copy, tied on V. F. small cover with TUDOR HALL VA. ....	15.00
275	Superb copy, tied on V. F. small cover .....	15.00
276	V. F. copy, deep color, tied on V. F. cover .....	15.00
277	V. F. copy, greenish blue, tied on cover with rare JACKSON LA. GRID .....	—
278	Superb copy, on V. F. cover with TUSCALOOSA STAR canc. ....	—
279	Fine copy, tied on V. F. cover with MARSHALL TEXAS GRID. Rare. ....	—

**J. T. PATTERSON & CO. ON COVER.**

280	V. F. pair, tied on V. F. small cover with AMELIA C. H. VA. Rare...	125.00
281	Fine pair, wide margins on three sides, close at right bottom, tied on cover with HARDIEVILLE S. C. ....	125.00
282	Superb copy, tied on V. F. cover with RICHMOND VA. canc. ....	10.00
283	V. F. copy, tied on V. F. cover with CLINTON MISS. ....	10.00
284	V. F. copy. <b>RARE ULTRAMARINE, tied on V. F. cover</b> .....	—
285	Fine copy, bottom sheet margin, tied on home made mourning envelope with KINGSTON N. C. ....	10.00
286	Superb copy. Stone Y, tied on V. F. cover with RICHMOND VA. ....	12.00
287	Superb copy. Stone Y, tied on V. F. cover with RICHMOND VA. Rare canc. ....	12.00
288	V. F. copy, tied on small neat cover with LITTLE ROCK ARK. Extremely rare .....	—
289	Fine copy, wide margins on three sides, small nick at right, tied on V. F. cover with GREENTOWN MONTGOMERY GA. Extremely rare .....	—
290	Fine copy, wide margins on three sides, cut close at right, tied with BLUE PAID 10 IN CIRCLE. Rare .....	—

**WALL PAPER.**

291	Fine copy, tied on small wall paper envelope. The only one in the collection with 10c 1861. Very rare .....	—
-----	---	---

**COMBINATION.**

292	Fine copy, cut in at left, used in combination with a pair 10c London. Both tied with black town canc. Very rare combination .....	—
-----	--	---

**ON U. S. ENTIRE ENVELOPE.**

293	Fine copy, wide margins on three sides, cut close at left, tied with blue town canc. over 3c 1861. Entire env. rare .....	—
-----	---	---

**ON TURNED COVER.**

294	V. F. copy, on V. F. cover, tied with KINGSTON GA. inside a fine 5c blue #203. Pmk. ATHENS GA. Rare combination .....	—
-----	---	---

**ON PATRIOTIC COVERS.**

295	Wide margins pair, creased, tied on campaign cover, embossed on flap, Bell & Everett .....	—
-----	--	---

PLATE I. George Walcott Collection of Confederates.



Robert Laurence, 30 East 42nd St., New York, N. Y.

PLATE II. George Walcott Collection of Confederates.



Robert Laurence, 30 East 42nd St., New York, N. Y.



PLATE III. George Walcott Collection of Confederates.



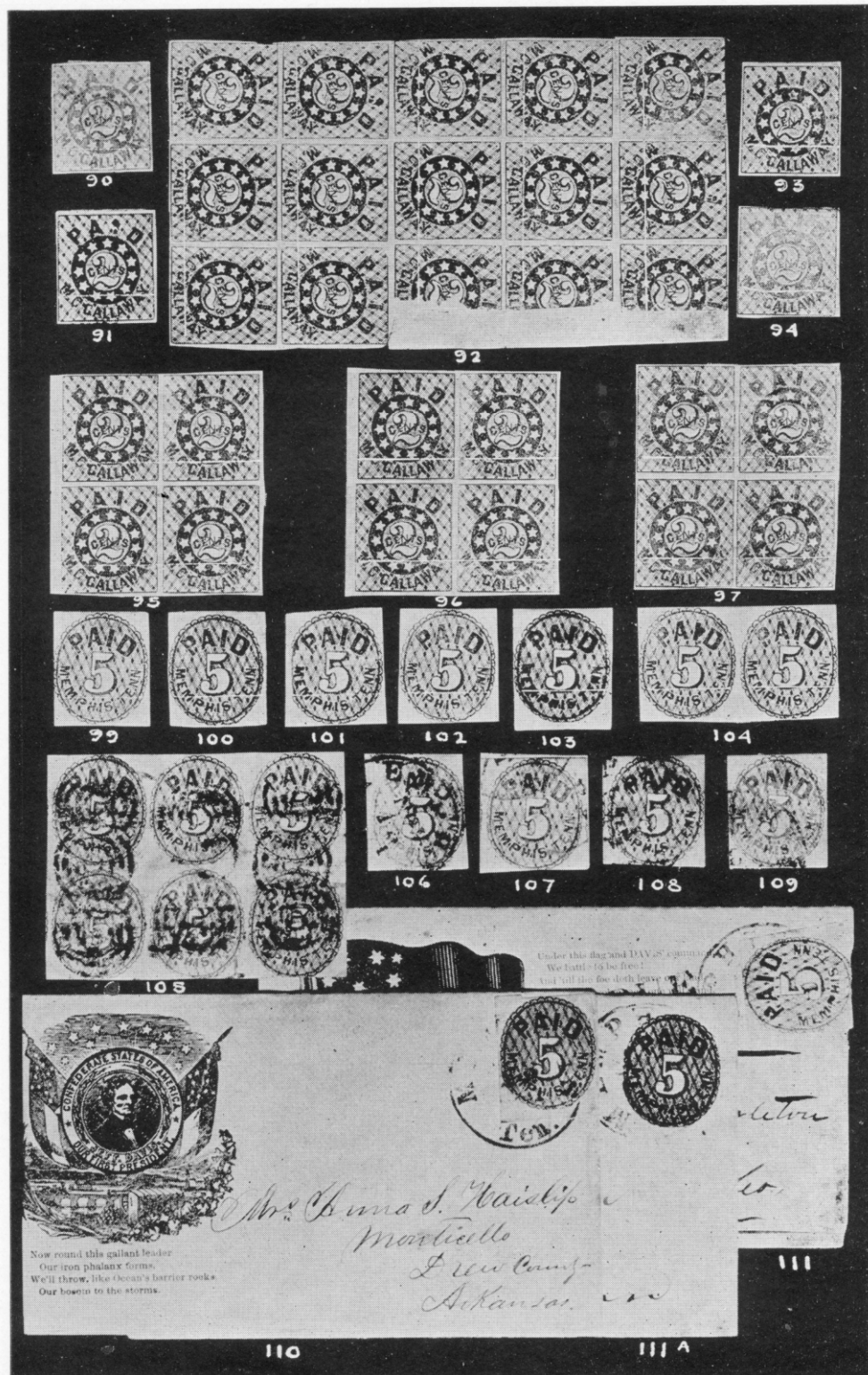
Robert Laurence, 30 East 42nd St., New York, N. Y.

PLATE IV. George Walcott Collection of Confederates.



Robert Laurence, 30 East 42nd St., New York, N. Y.

PLATE V. George Walcott Collection of Confederates.



Robert Laurence, 30 East 42nd St., New York, N. Y.



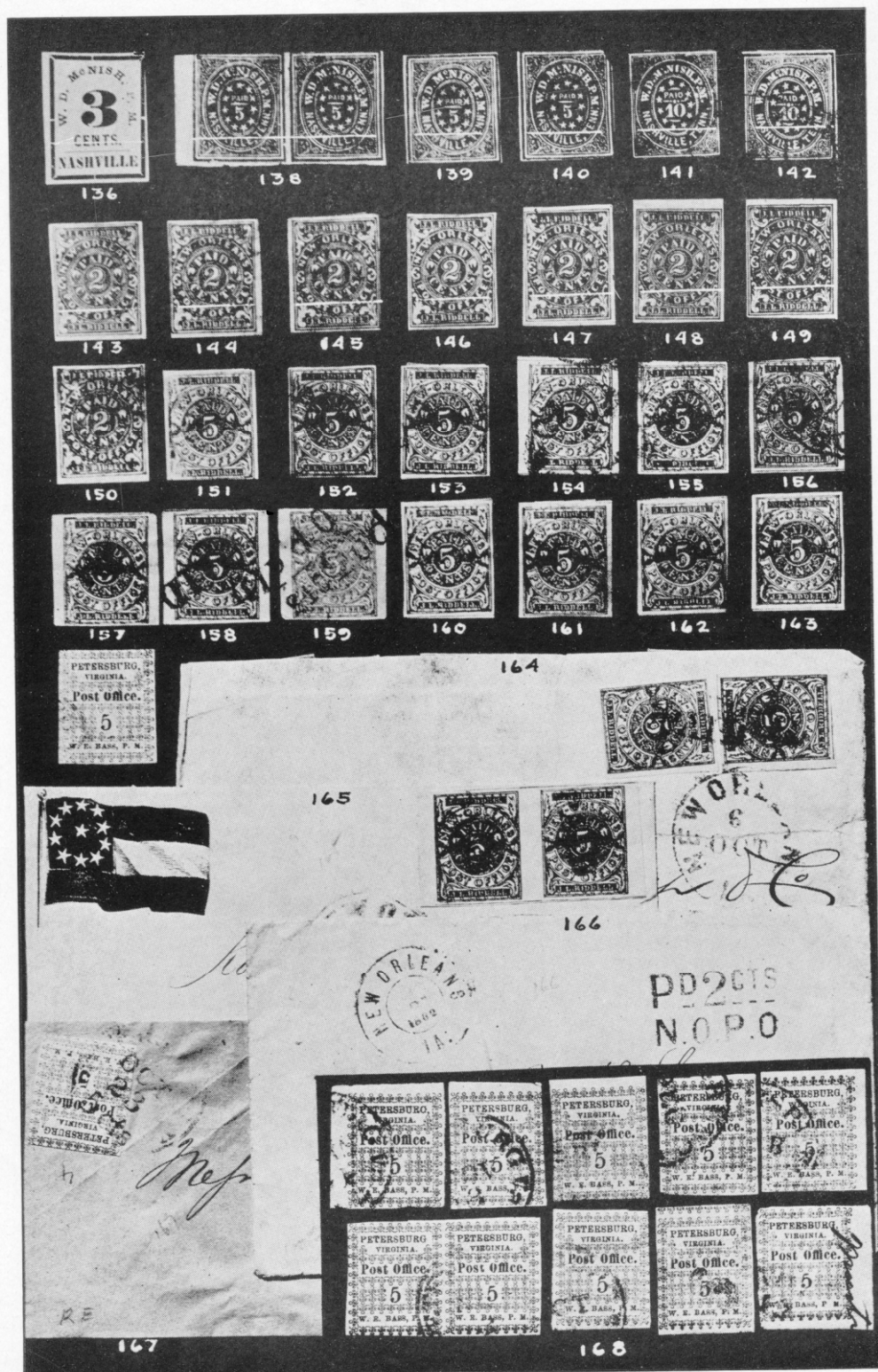
PLATE VI. George Walcott Collection of Confederates.



Robert Laurence, 30 East 42nd St., New York, N. Y.



PLATE VII. George Walcott Collection of Confederates.



Roberr Laurence, 50 East 42nd St., New York, N. Y.





PLATE IX. George Walcott Collection of Confederates.



Robert Laurence, 30 East 42nd St., New York, N. Y.

PLATE X. George Walcott Collection of Confederates.



Robert Laurence, 30 East 42nd St., New York, N. Y.



PLATE XI. George Walcott Collection of Confederates.



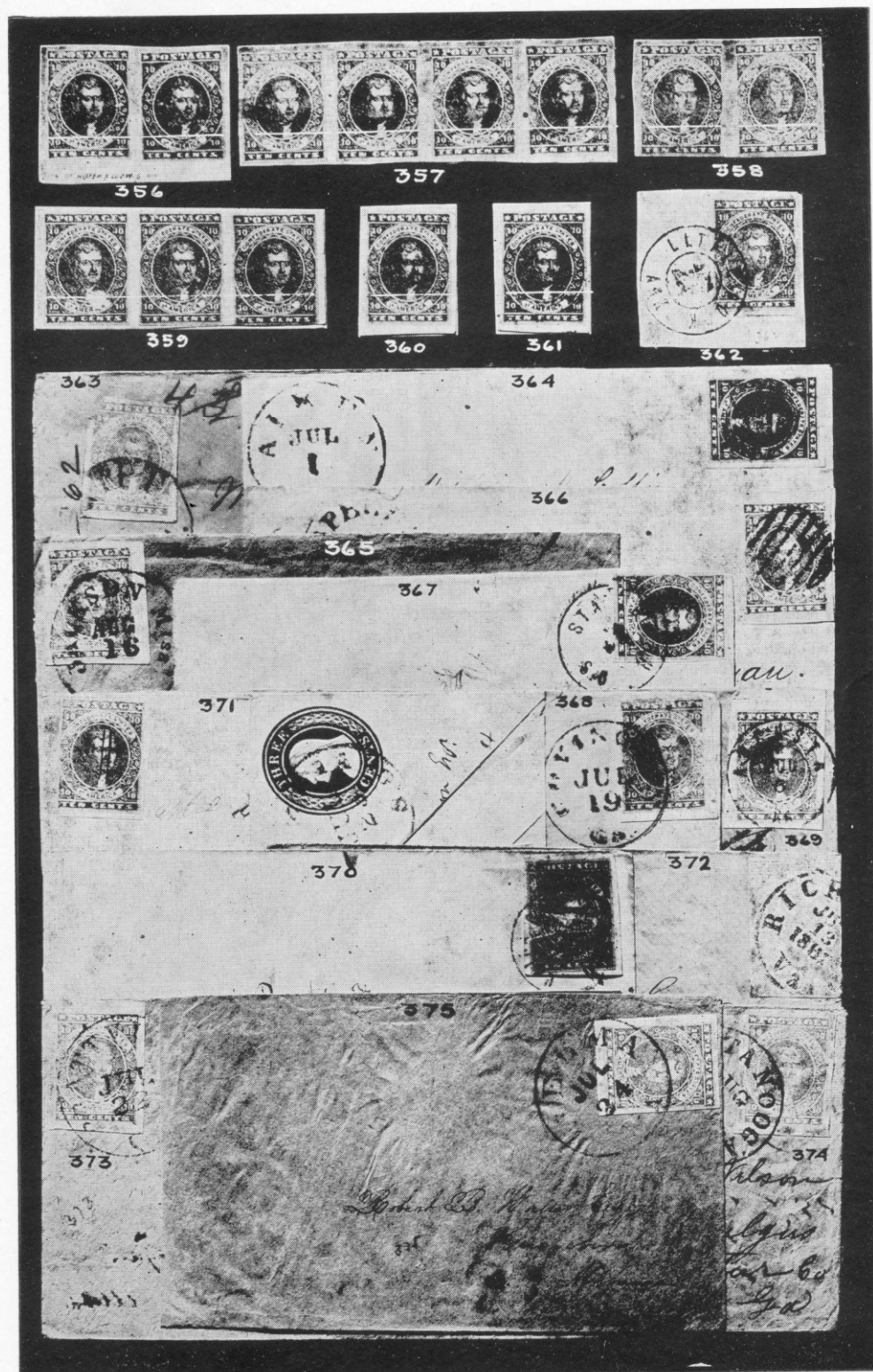
Robert Laurence, 30 East 42nd St., New York, N. Y.

PLATE XII. George Walcott Collection of Confederates.



Robert Laurence, 30 East 42nd St., New York, N. Y.

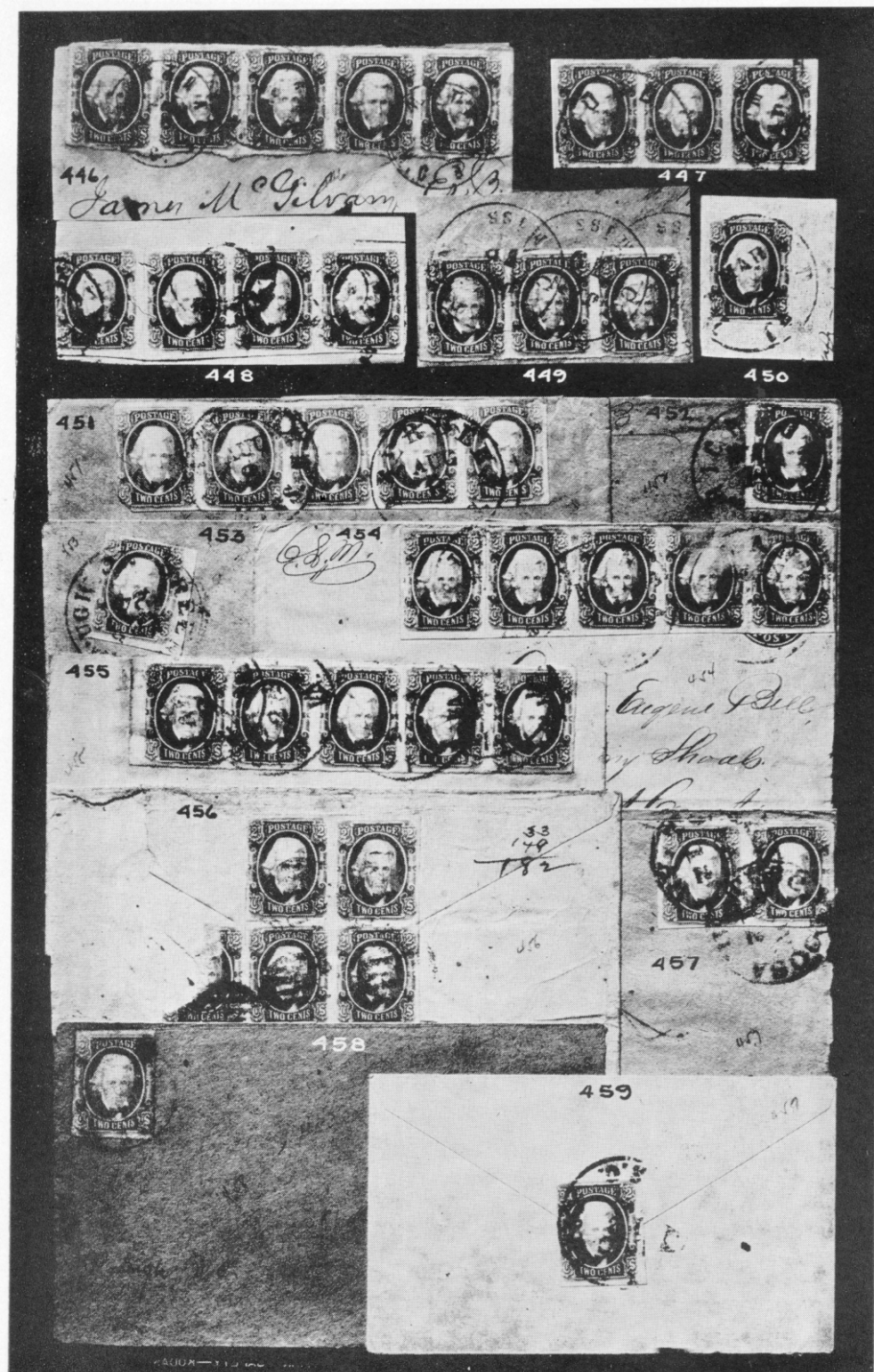
PLATE XIII. George Walcott Collection of Confederates.



Robert Laurence, 30 East 42nd St., New York, N. Y.



PLATE XIV. George Walcott Collection of Confederates.



Robert Laurence, 30 East 42nd St., New York, N. Y.

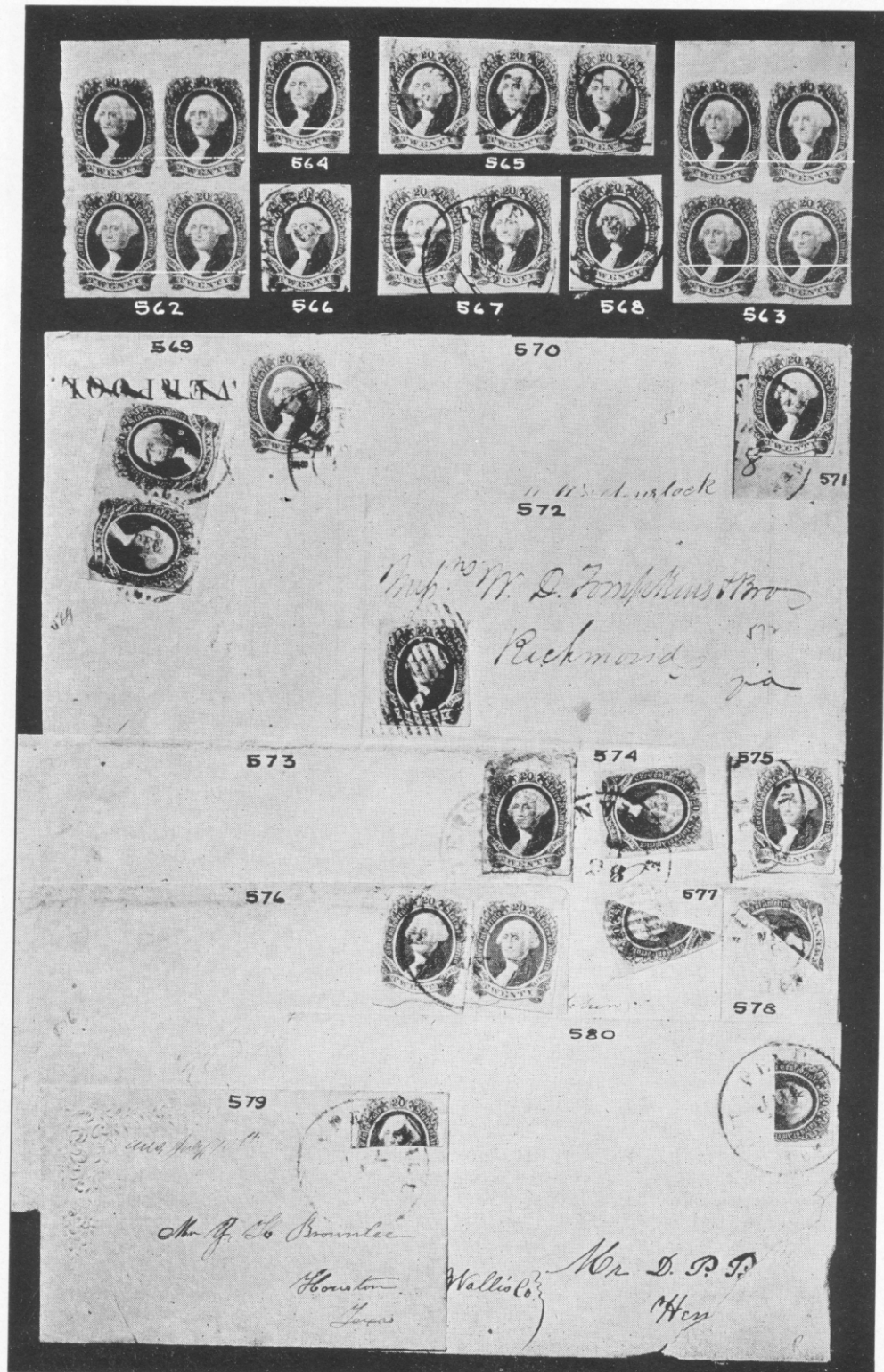


PLATE XV. George Walcott Collection of Confederates.



Robert Laurence, 30 East 42nd St., New York, N. Y.

PLATE XVI. George Walcott Collection of Confederates.



Robert Laurence, 30 East 42nd St., New York, N. Y.

- 296 V. F. copy, tied on fine Patriotic cover. Laurence cat. #3171, different verse . . . . .  
 297 V. F. copy, pen canc. on V. F. small Patriotic cover. Laurence cat. #3215. Ten stars . . . . .

**2c GREEN No. 202.**

- 297A **VERY FINE SHEET OF 100. LISTED IN THE COLLECTION AS THE ONLY SHEET OF 100 IN EXISTENCE** . . . . .  
 298 ★ V. F. O. G. block of six . . . . . 75.00  
 299 ★ Fine O. G. well centered block of four, slightly creased . . . . . 50.00  
 300 ★ V. F. O. G. pair . . . . . 25.00  
 301 ★ Fine copy, pin head thin spot . . . . . 12.00  
 302 ★ Fine copy, pin head thin spot . . . . . 12.00  
 303 ★ V. F. O. G. strip of five, top row . . . . . 60.00  
 304 ★ Fine O. G. left sheet margin copy . . . . . 12.00  
 305 ★ V. F. O. G. copy . . . . . 12.00  
 306 ○ **SUPERB PAIR CANCELLED PAID. Extremely rare. Gem** . . . . .  
 307 ○ V. F. copy, cancelled with EXPRESS CO. canc. A rarity . . . . .  
 308 ○ V. F. used copy on piece of cover . . . . . 50.00  
 309 ○ V. F. used copy . . . . . 50.00  
 310 ○ Fine copy, used, thin . . . . . 50.00

**ON COVER.**

- 311 Fine strip of five on face of cover, cancelled RICHMOND . . . . .  
 312 Fine margins copy, tied on V. F. cover . . . . . 200.00  
 313 Fine copy, tied on cover with SAVANNAH GA. . . . . 200.00  
 314 **EXTREMELY RARE BLOCK OF 5, tied on home made cover with black town ANDERSON TEXAS canc.** . . . . .  
 315 **Two 2c green used in combination with 5c #205, tied on V. F. cover with blue COLUMBIA S. C. One of the rarest Confederate combinations** . . . . .  
 316 Fine copy, tied on V. F. cover with black town ATHENS GA. . . . . 200.00  
 317 V. F. copy on hand made envelope out of an insurance circular, tied with town canc. . . . . 200.00  
 318 **Superb strip of five, pen canc. from OXFORD N. C. on turned cover with 3c 1857 used inside. Very rare** . . . . .  
 319 Fine strip of three and a pair, tied on V. F. cover with town canc. KNOXVILLE TENN. . . . .  
 320 V. F. copy, tied to large piece of env. with blue town canc. RICHMOND VA. . . . . 200.00

**5c BLUE LITHOGRAPHED 1862.**

- 321 ★ **VERY FINE BLOCK OF 197. FROM LATE SETTING OF STONE 2. THE LARGEST SINGLE PIECE KNOWN** . . . . .  
 322 ★ **VERY FINE RECONSTRUCTED SHEET OF 5c BLUE, STONE 3, COMPLETE PANE, CONSISTING OF THIRTEEN PAIRS AND THIRTY-ONE SINGLES** . . . . .  
 323 ★ **BLOCK OF TWELVE, STONE 3, LIGHTLY CREASED. THE LARGEST BLOCK ON RECORD OF STONE 3** . . . . . 600.00  
 324 ★ V. F. O. G. block of nine, stone 2. **BOTTOM ROW FROM DIFFERENT PANE** . . . . .  
 325 ★ V. F. O. G. block of nine, very deep shade. Rare block . . . . .

326	★ V. F. O. G. block of ten, stone 2 .....	—
327	★ V. F. O. G. block of four, stone 2 .....	—
328	○ Fine copy, used in combination with 5c #206, VARIETY WHITE CRAVAT. Both tied on half of env. Very rare .....	—
329	○ V. F. copy, canc. with grid .....	7.00
330	○ Fine copy, light blue, canc. PAID. Very rare .....	35.00
331	○ V. F. copy, canc. with rare BIG SHANTY. A GEM .....	—
332	○ V. F. copy, canc. in red CAMDEN D. C. ....	30.00
333	○ Fine pair, lightly creased .....	15.00
334	○ V. F. pair, light blue .....	15.00

## ON COVER.

335	Two V. F. copies, stone 3, deep shade, both tied on V. F. cover with UNIONTOWN ALA. ....	40.00
336	Superb copy, tied on cover .....	9.00
337	Superb copy, stone 3, tied on cover with WILMINGTON N. C. 5 PAID..	20.00
338	Superb copy, tied on cover with RICHMOND VA. ....	9.00
339	Superb pair, stone 3, tied on cover with GODSON VA. Rare .....	40.00
340	V. F. pair, stone 3, a split, bottom stamp from different pane, tied on small home made cover. Very rare .....	—
341	Fine and very rare pair, with plate flaws, lines across stamps, tied on V. F. cover .....	—
342	Fine pair, deep shade, tied on V. F. cover .....	15.00

## COMBINATIONS.

343	V. F. copy, 5c blue used with 5c green, both tied with different town postmarks. Very rare .....	—
344	V. F. blue used with 5c #205, both tied on small neat cover. Rare...	—
345	Fine copies, 5c blue and 5c green, both tied with different town canc...	—
346	Very rare combination, 5c blue and 5c green, on face of cover, on re- verse 10c rose. Very unusual .....	—
347	Two fair copies, 5c blue, stone 3, different shades milky blue and dark blue, both tied on cover with rare RED TOWN CANC. WOOD- VILLE GEO. ....	—

## CANCELLATIONS.

348	Fine copy, close at right, cancelled with rare TUSCALOOSA STAR....	—
349	Fine pair, stone 3, bottom sheet margin, top stamp creased at left top, but tied with rare ABINGDON VA. STAR. Illustrated C. C. Phila- telist Oct. 1925. #7 .....	—

## ON ILLUSTRATED ENVELOPE.

350	V. F. right bottom sheet margin, tied with SAVANNAH GA. on V. F. HOTEL COVER. A GEM .....	—
351	Fine copy, cut in at top, tied with blue NORFOLK VA. canc., on rose env. with picture of a PACKET BOAT .....	—

## ON TURN COVER.

352	Fine pair, bottom sheet margin, right stamp has damaged corner, canc. with RED GRID OF HAVANA ALA. Inside used with 1853 3c env. ....	—
-----	--	---

## ON PATRIOTIC COVERS.

- 353 Fine copy, cut in at top, tied on Pat. cover. Blue Flag with Palmetto Tree ..... —
- 354 Fine copy, stone 3, cut in at top, tied with blue PETERSBURGH VA. canc. on V. F. cover. Laurence cat. #3161 ..... 30.00

## 10c ROSE LITHOGRAPHED.

- 355 VERY FINE RECONSTRUCTED SHEET OF 10c ROSE, COMPLETE PLATING EXCEPT #40. TWO VERY FINE UNUSED PAIRS AND FORTY-FIVE SINGLES. USED AND UNUSED. A GEM.. —
- 356 ★ Superb O. G. rejoin pair, bottom sheet margin with imprint. (Lith. of Hoyer & Ludwig Rich.). Extremely rare ..... —
- 357 ★ Wide margins, O. G. strip of four, two stamps thin ..... —
- 358 ★ V. F. O. G. pair ..... 150.00
- 359 ★ Fine O. G. strip of three, one stamp thin ..... 210.00
- 360 ○ V. F. used copy, lightly canc. .... 35.00
- 361 ○ Superb, carmine rose, canc. in blue ..... 75.00
- 362 ○ V. F. copy, tied on piece of cover with LITTLE ROCK ARK. Extremely rare ..... —

## ON COVER.

- 363 Fine copy, left corner cut away, but tied on front of cover with red EGYPT MISS. canc. Very rare ..... —
- 364 Carmine rose, fine wide margins copy, canc. black grid, pmk. AIKEN S. C. .... —
- 365 V. F. copy, tied on cover with JACKSON MISS. canc. .... 45.00
- 366 Superb copy, tied on cover with black grid, pmk. CHAPELL HILL N. C. 45.00
- 367 V. F. copy, tied on small cover, black town canc. .... 45.00
- 368 V. F. copy, tied on cover with blue COVINGTON GA. canc. .... 45.00
- 369 Superb copy, tied on cover with AUGUSTA GA. canc. .... 45.00

## ON U. S. ENTIRE ENVELOPE.

- 370 Fine copy over 1861 3c env., tied on cover with UNION CHURCH MISS. canc. Very rare ..... —
- 371 V. F. copy, pen canc. 3c 1852 entire env. pmk. LANCASTER S. C. Rare ..... —

## WITH IMPRINT.

- 372 Fine copy with imprint Hoyer & Ludwig, tied on V. F. cover with RICHMOND VA. Extremely rare ..... —

## ON TURN COVER.

- 373 Superb copy, tied on cover with PRATTVILLE town canc., used inside with a 5c blue #203 from COLUMBUS MISS. Very rare combination ..... —
- 374 V. F. copy on turn cover, tied on with CHATTANOOGA TEN. canc. .... —
- 375 V. F. copy with variety MALFORM T OF TEN. tied on cover with SELMA ALA. .... 50.00

**1862 5c TYPOGRAPH****BY De La RUE AND ARCHER & DALY.****No. 205-No. 206.**

376	★	Superb sheet of 100, De La Rue .....	—
377	★	V. F. sheet of 100, Archer & Daly on London paper, with WHITE CRAVAT variety, also numerous flaws .....	—
378	★	V. F. sheet of 100 on THICK PAPER, Plate 3. Very rare in sheet..	—
379	○	Fine used block of eighteen, Archer & Daly, canc. RICHMOND VA...	—
380	○	V. F. used block of six, on London paper, canc. RICHMOND VA. Very rare .....	—
381	○	V. F. used block of four, lightly canc. ....	35.00

**VARIETIES AND CANCELLATIONS.**

382	○	V. F. WELL CENTERED PAIR. PRINTED ON BOTH SIDES, ONE STAMP SCISSOR CUT AND REJOINED. EXTREMELY RARE.	500.00
383	○	V. F. pair, PERFORATED, canc. OXFORD N. C. Very rare .....	—
384	○	V. F. single, canc. FISHERVILLE VA. C. R. R. ....	75.00
385	○	V. F. single, canc. ESTELL SPRING U. & C. R. R. ....	75.00
386	○	V. F. pair, half stamp MISPRINTED .....	—
387	○	V. F. single. Very strong SHORT TRANSFER .....	—
388	★	V. F. single with white CRAVAT VARIETY .....	8.00
389	○	V. F. copy canc. in red CHARNEL HOUSE .....	10.00
390	○	V. F. pair, tied on piece of cover with RED GRANTVILLE GA. town canc. ....	10.00
391	○	V. F. pair, tied on piece of cover with JASPER TEX. town canc....	10.00
392	○	Fine pair, tied on piece of cover with rare NACHITOCHEs LA.....	—
393	○	V. F. copy, tied on small blue cover with rare red grid of LAVACA ALA. A GEM .....	—

**5c TYPOGRAPHED No. 205-No. 206.****ON COVER.****SINGLE ON COVER.**

394		Fine copy, cut close at right, tied on small cover with STRAIGHT LINE JACKSON MISS. ....	25.00
395		V. F. copy, tied with RICHMOND VA. Also pmk. GRAHAM'S TURN-OUT S. C. ....	—
396		V. F. copy, flaw on right eye, tied on V. F. cover with KNOXVILLE TENN. ....	—
397		V. F. copy, tied on cover with MOBILE ALA. Also pmk. due 5 in a small circle .....	—
398		V. F. copy, on V. F. cover with corner card, tied with blue town canc. LYNCHBURG VA. ....	5.00
399		V. F. copy, tied on V. F. cover with blue town canc. ALBANY GA. ....	5.00
400		V. F. copy, tied on V. F. small cover with blue town canc. PETERSBURGH VA. ....	5.00

**BLOCKS OF FOUR, STRIPS.**

401		V. F. block of four, lightly tied on face of cover with black town canc..	35.00
402		Two V. F. pairs, tied on cover with RICHMOND VA. canc. ....	—
403		Four V. F. pairs, different shades, lightly tied on home made cover with STAUNTON VA. town canc. ....	—

- 404 Fine strip of four, tied on V. F. cover with blue RALEIGH N. C. town  
canc. ....
- 405 Fine strip of four, lightly tied on cover with black TEN. town canc. ....
- 406 Fine pair and a single, all used on fine cover from ATHENS GA. ....

## ODDITIES.

- 407 Superb pair, LEFT BOTTOM CORNER SHEET margins, lightly canc.  
RICHMOND VA. ....
- 408 Superb pair, VERY RARE DEEP SHADE, tied on cover with RICH-  
MOND VA. town canc. ....
- 409 Two singles, Local print, of different shades, tied with SPARTEN-  
BURGH S. C. town canc. Rare ....
- 410 V. F. pair, London print, tied on with TULEPO MISS. Also hand-  
stamped CHARLESTON S. C. PAID 10c ....
- 411 Two V. F. singles, one on each top corner of the env., both tied with  
blue LYNCHBURG VA. town canc. Very odd ....

## WHITE CRAVAT.

- 412 V. F. pair, tied on cover with RICHMOND VA. town canc., on env. with  
blue corner card ....
- 413 Two V. F. pairs, one over the other, top one has cravat, tied with two  
towns canc. RICHMOND and CHATTANOOGA. Very rare ....

## CANCELLATIONS.

- 414 V. F. PAIR, TIED ON SMALL COVER WITH SOUTHERN EXPRESS  
LYNCHBURG. A GEM ....
- 415 Two fine copies, tied on V. F. cover with rare ESTELL SPRINGS N. &  
C. R. R. canc. ....
- 416 V. F. pair, tied on cover with PINE BUFF ARK. town canc. ....
- 417 Fine pair, tied on V. F. cover with rare STRAWBERRY PLAINS TENN.  
town canc. ....
- 418 V. F. pair, left sheet margin, canc. with the rarest of Straight Line  
cancs. HATCHECKUBBEE ALA. ....
- 419 V. F. pair, deep shade, tied on cover with RED, BLACK & WHITE VA.  
town canc. ....
- 420 Superb pair, tied on V. F. cover with RED PETERSBURG VA. town  
canc. ....
- 421 Superb pair, London print, tied on V. F. cover with RED CAMDEN S. C.  
town canc. ....
- 422 V. F. pair, on V. F. cover with rare ADINGDON VA. STAR ....
- 423 Fine pair, tied on V. F. cover with GREEN TOWN canc. Very rare ....
- 424 V. F. pair, on V. F. cover canc. PAID, from JANESVILLE N. C. Rare ....
- 425 V. F. pair, on thick, hard paper canc. PAID. Very rare ....
- 426 V. F. pair, tied on cover with rare PATTERSON N. C. PAID ....
- 427 V. F. pair, greenish blue, tied on cover with Target canc. ....
- 428 Fine pair, tied on cover with RECTANGULAR FORWARDED 10. Rare ....
- 429 V. F. pair, tied with CHAPEL HILL N. C. grid ....
- 430 V. F. pair, tied on cover with RICHMOND VA. town canc. Also pmk.  
in blue, MARTINSBURG W. VA. and due 3 also in blue ....
- 431 V. F. pair, tied on with two towns canc. One in black. One in blue ..
- 432 V. F. pair, attached to cover with sealing wax, tied with CAMDEN S. C.  
canc. Very rare ....

- 433 V. F. pair, on folded letter, pen canc. Pmk. in red PAMARIA S. C. .... —  
 434 Two superb pairs. One inside. One on face. Both lightly tied with  
 different town canc. Very attractive ..... —  
 435 Two V. F. pairs. One inside. One on face of CONF. WAR DEPT. ENV. .... —  
 436 V. F. pair on face of cover, tied with ATLANTA GA., inside 10c #210.  
 Pen canc. .... —

## ON U. S. ENTIRE ENVELOPES.

- 437 Two V. F. singles over 3c 1853 env., tied with town canc. BENNETTS-  
 VILLE S. C. .... —  
 438 Fine pair, thick, hard paper over 3c 1860 env., tied with RICHMOND  
 VA. .... —  
 439 V. F. pair on 3c 1860 entire env., tied with RICHMOND VA. .... —

## COMBINATIONS.

- 440 Fine copy, used in combination with 5c green #200, stone 1, both tied  
 on cover with GREENVILLE TENN. town canc. .... —  
 441 Fine copy, slightly damaged, used in combination with 5c blue #203,  
 tied on Davidson College picture cover ..... —

## ON WALL PAPER ENV.

- 442 V. F. pair, tied on wall paper env. Rare with this stamp ..... —  
 443 Superb pair, deep shade, tied on V. F. wall paper env. with RARE  
 CANTON MISS. GRID ..... —

## ON PATRIOTIC COVER.

- 444 Fine pair, tied on U. S. Pat. env. .... —

## 2c BROWN RED 1863.

- 445 ★ COMPLETE UNUSED SHEET OF 200 ..... —  
 446 ○ Fine strip of five, used on piece of cover with CARTHAGE N. C. town  
 canc. .... 200.00  
 447 ○ V. F. strip of three, canc. RICHMOND VA. .... —  
 448 ○ V. F. strip of four, tied on piece of cover ..... —  
 449 ○ Fine strip of three, tied on piece of cover ..... —  
 450 ○ V. F. single, tied on piece of cover with RICHMOND VA. .... —

## ON COVER.

- 451 Fine strip of five, on cover with ABERDIEN town canc. .... 200.00  
 452 V. F. single, tied on cover with RICHMOND VA. town canc. .... 100.00  
 453 V. F. single, tied on cover with blue GREENSBOROUGH N. C. town  
 canc. .... 100.00  
 454 Fine strip of four and a single from same strip, tied with ATLANTA  
 GA. on U. S. entire env. 1c blue 1860. Very rare ..... —  
 455 Fine strip of five, tied on cover with RICHMOND VA. town canc. .... 200.00  
 456 BLOCK OF FIVE, TIED ON COVER, WITH A BLOCK OF FOUR IN  
 FINE CONDITION, AND A STAMP TORN IN HALF. VERY RARE ..... —  
 457 V. F. pair, tied on cover with TUSCALOOSA ALA. town canc. Very rare ..... —  
 458 Fine O. G. copy, cut in at right, but tied on cover with RED RALEIGH  
 N. C. town canc. The only red canc. in this collection ..... —  
 459 V. F. copy, tied on back of small env. with CHARLESTON S. C. town  
 canc. .... 100.00



**TEN. No. 208.**

460	★ V. F. UNUSED STRIP OF THREE. RARE .....	—
461	★ V. F. unused pair .....	75.00
462	★ Fine unused pair .....	75.00
463	★ V. F. unused copy .....	35.00
464	★ V. F. unused copy .....	35.00
465	★ V. F. unused copy .....	35.00
466	○ V. F. copy, canc. with rare grid .....	45.00
467	○ V. F. copy, tied on face of cover with CHATTANOOGA TENN. town canc. ....	45.00
468	○ V. F. copy, tied on piece of cover with blue RICHMOND VA. town canc. ....	45.00
469	○ V. F. copy, tied on piece of cover with rare town canc. BOTETOURT SPRINGS VA. ....	45.00
470	○ V. F. copy, tied on piece of cover with TULLAHOMA TENN. town canc. ....	—

**TEN ON COVERS.**

471	V. F. copy, tied on folded letter with town canc. ....	85.00
472	Superb copy, tied on V. F. cover with ROME GA. town canc. ....	85.00
473	V. F. copy, tied on V. F. cover with blue town canc. ENFIELD N. C. ...	85.00
474	Superb copy, tied on V. F. cover with RICHMOND VA. canc. ....	85.00
475	FINE PAIR, tied on cover with POLLARD ALA. town canc. Very rare	—

**10c OUTER LINE No. 209.**

476	★ V. F. O. G. STRIP OF THREE. EXTREMELY RARE .....	—
477	★ Fine O. G. pair, one stamp slightly stained. Very rare .....	—
478	★ Fine copy, frame line complete on three sides .....	200.00
479	○ V. F. PAIR, LIGHTLY CREASED, SMALL TEAR ON LEFT STAMP IN BOTTOM MARGIN. VERY RARE .....	500.00
480	○ V. F. copy, tied on piece of cover with RICHMOND VA. canc. ....	85.00

**ON COVER.**

481	V. F. copy, frame line complete on three sides, tied on cover with MOBILE ALA. town canc. ....	125.00
482	V. F. copy, tied on cover with MOBILE ALA. town canc. ....	125.00
483	V. F. copy, tied on cover with RICHMOND VA. town canc. ....	125.00

**ARCHER & DALY 1863 10c BLUE.****Two Dies Were Used in the Manufacture of These Stamps.**

484	★ Two blocks, a block of six DIE A, showing scrolls at the corners. A block of four DIE B, encircled by heavy outer lines parallel to the design .....	—
485	★ Beautiful lot of shades DIE A, twelve blocks of four, four singles and a pair .....	—
486	★ Beautiful lot of shades DIE B, six blocks and a single .....	—
487	★ Archer & Daly, complete sheet of 200, with imprint #1 .....	—
488	★ Keating & Ball, sheet of 200, with imprint # 1 .....	—
489	★ 10c PERFORATED DIE B, A BLOCK OF 57 STAMPS. THE LARG- EST BLOCK ON RECORD. A REAL GEM .....	—

- 490 ★ V. F. block of four, perforated .....  
 491 ★ Fine single, perforated .....  
 492 ★ A SUPERB USED STRIP OF SIX, cancelled with a black town canc .....  
 493 ○ V. F. pair, ribbed paper .....  
 494 ○ Two V. F. copies, canc. with RED TOWNS GASTON and RALEIGH .....  
 495 ○ V. F. used copy, perforated lightly, tied on small piece of cover .....

**10c 1863-4 ON COVER.****STRIPS AND PAIRS.**

- 496 Superb STRIP OF FOUR, tied on back of small cover with MOBILE ALA. town canc. ....  
 497 V. F. PAIR, tied on V. F. cover, used inside with handstamp conf. ....  
 498 V. F. PAIR on ribbed paper, tied on V. F. cover with ALBANY GA. town canc. ....  
 499 V. F. PAIR, greenish blue, tied on V. F. cover used inside with V. F. single 10c 1863 .....  
 500 V. F. PAIR, tied on V. F. cover with RICHMOND VA. canc. ....

**ODDITIES.**

- 501 V. F. copy, pen canc. on cover, franked by ROBERT E. LEE GENERAL .....  
 502 Most unusual shade of this stamp I have ever seen, on V. F. cover, pen canc. ....  
 503 GREENISH BLUE, very deep color, tied on V. F. cover with target canc. Pmk. PATTERSON N. C. ....  
 504 V. F. copy, tied on back of cover, handstamp on front CHARLOTTE-VILLE VA. due 10c. A case of a Confederate stamp refused for postage .....  
 505 Superb copy, left top corner sheet margins, laid paper, tied on V. F. cover with GEORGETOWN S. C. ....  
 506 Superb copy, left sheet margin, laid paper, tied on V. F. cover .....

**ON U. S. ENTIRE ENV.**

- 507 V. F. copy, over U. S. env. 3c 1860, tied with rare town VICTORIA TEX. ....  
 508 V. F. copy over U. S. env. 3c 1860, tied with GRIFFIN GA. canc. ....

**COMBINATION AND TURN COVERS.**

- 509 Fine copy, used in combination with pair 5c #206, tied RICHMOND VA. ....  
 510 V. F. copy, tied on turn cover, inside pair 5c #206, also tied .....  
 511 Poor copy, tied on front U. S. 1c 1857 type 5, tied inside. Very rare .....  
 512 V. F. copy, tied on front U. S. 3c 1857 type 2 tied inside. Rare ....  
 513 Two copies. One used inside. One used outside, both tied with town canc. ....  
 514 V. F. copy, tied on front of cover, pair 5c #205 used inside .....

**RAILROAD CANCS.**

- 515 Fine copy, tied on cover with rare WARTRACE N & L R. R. in oval. Rare .....  
 516 Fine copy, tied on cover with rare BUMPASS VA. C. R. R., edges of cover stained .....

**CANCELLATIONS.**

- 517 V. F. copy, tied on cover with rare, straight line JACKSON MISS. .... —  
 518 V. F. copy, tied on V. F. cover with MERIDIAN MISS. Very rare .... —

**GREEN CANCS.**

- 519 V. F. copy, tied on cover with green MONTICELLO GA. .... —  
 520 V. F. copy, tied with green CHESTER C. H. S. C. .... —  
 521 Two covers with green cancs. One LYNCHBURG VA. and a GEORGIA  
     town ..... —

**PURPLE CANCS.**

- 522 V. F. copy, tied on with purple AUGUSTA GA. .... —  
 523 V. F. copy, tied on with purple AUGUSTA GA. .... —  
 524 V. F. copy, tied on with purple LYNCHBURG VA. .... —

**RED CANCS.**

- 525 V. F. copy, tied on with red GREENSBORO N. C. .... —  
 526 V. F. copy, tied on with red TUNNEL HILL GA. .... —  
 527 Fine copy, tied folded letter with red BLACKS & WHITES VA. .... —  
 528 V. F. copy, tied on with red OPELIKA ALA. .... —  
 529 V. F. copy, tied on with RARE red COLUMBIA GA. .... —  
 530 Fine copy, tied on with red WOODVILLE GA. .... —  
 531 Fine copy, tied on with red LYNCHBURG VA. .... —

**FORT.**

- 532 Fine copy, tied on with FORT GAINS GA. .... —

**TOWNS.**

- 533 Fine copy, tied on with blue green double circle. DURRAM'S N. C. .... —  
 534 Two V. F. copies on two covers canc. PETERSBURG VA. in blue and in  
     black ..... —  
 535 V. F. copy, canc. straight line PAID. Pmk. RIDGEWAY N. C., inside  
     used corner card R. R. env. .... —  
 535a V. F. copy, tied on with QUINCY FLOR. canc. .... —  
 536 V. F. copy, tied on with WASHINGTON N. C. also Pmk. WAY ..... —  
 537 V. F. copy, tied on with HUNTSVILLE TEXAS ..... —  
 538 V. F. copy, tied on with GALVESTON TEXAS ..... —

**ODD POSTMARKS.**

- 539 V. F. copy, tied with MONTGOMERY ALA. also pmk. MACON GA.  
     FORWARDED 10. .... —  
 540 V. F. copy, tied with EUTAW ALA. also pmk. RICHMOND VA. and  
     ADVERTISED 2 in odd design postmark ..... —  
 541 V. F. copy, tied with HALIFAX C. H. VA. also pmk. MACON GA. and  
     missent ..... —  
 542 V. F. copies on readdressed cover, partly on top of each other, two  
     different town cancs., also DUE 10 ..... —

**10c PERFORATED ON COVER.**

- 543 V. F. pair, tied on cover with DEMOPOLIS ALA. Very rare ..... —  
 544 V. F. copy, tied on cover with RED LYNCHBURG VA. canc. .... —

**ON WALLPAPER ENV.**

- 545 V. F. copy, on V. F. wall paper env. with TUSCALOOSA ALA. ....
- 546 V. F. copy, on V. F. wallpaper env. tied with blue ASHBORO N. C. town  
canc. ....
- 547 V. F. copy, on V. F. wallpaper env. tied with SAVANNAH GA. ....

**ON PATRIOTIC COVERS.**

- 548 V. F. copy, pen canc. on fine Patriotic cover. Laurence cat. #33. Pmk.  
in blue LENOIR N. C. ....

**ON OFFICIAL ENVELOPES.**

- 549 Fine copy, tied on official env. C. S. NITRE and MINING BUREAU. ....
- 550 V. F. copy, on official env. HEAD QUARTERS CAVALRY CORPS ARMY  
OF NORTH VA. ....
- 551 Fine copy, on official env. CONFEDERATE STATES TREASURY DEPT. ....
- 552 V. F. copy, on official env. CONF. STATES EXECUTIVE DEPT. ....
- 553 Two V. F. copies, on two different covers STATE OF GA. QUARTER-  
MASTER—GENERAL'S OFFICE ....
- 554 Two V. F. copies, on two different covers SUBSISTENCE DEPT. C. S.  
both N. C. ....
- 555 Two V. F. copies, on two covers, State of N. C. One EXECUTIVE  
DEPT. One ADJUTANT GEN OFFICE ....
- 556 Two V. F. copies, on two official envs. QUARTERMASTER DEPT. and  
COM'DNT CONSCRIPTS ....
- 557 V. F. copy, on official env. QUARTERMASTER GENERAL OF GA. ....
- 558 Two fine copies, on two official envs. CHIEF ENROLLING OFFICE and  
CHARLESTON ARSENAL ....

**20c GREEN 1863.****LINE ENGRAVED BY ARCHER & DALY.**

- 559 ★ Right pane of 100, on thin paper, double transfer on stamps #10,  
15, 25, 35 and 80. Very rare sheet ....
- 560 ★ Right pane of 100, on thick paper ....
- 561 ★ Superb block of six, right pane with imprint Archer & Daly. Richmond  
Va. ....
- 562 ★ V. F. top sheet margin O. G. block of four, double transfer variety  
EYES DOUBLE ....
- 563 ★ V. F. top sheet margin O. G. block of four, double transfer, TWENTY  
DOUBLE ....
- 564 ★ V. F. copy, shift in 20c also DOUBLE CAP over 20 ....
- 565 ○ V. F. used strip of three, lightly cancelled. Very rare ....
- 566 ○ V. F. COPY, CANCELLED IN RED GREENSBORO N. C. THE ONLY  
ONE IN THE WALCOTT'S COLLECTION OFF COVER ....
- 567 ○ V. F. PAIR, LIGHTLY CANCELLED WITH BLACK TOWN CANC.  
VERY RARE ....
- 568 ○ V. F. cover cancelled with black town canc. CHEROW S. C. ....

**ON COVER.**

- 569 Two copies. One V. F. One slightly damaged, both tied on half of env.  
with CHARLESTON S. C. also PAID 10 in circle ....

- 570 V. F. copy, tied on small neat cover with GALVESTON TEXAS canc.  
Very rare ..... —
- 571 V. F. copy, tied on V. F. cover with SAN ANTONIO TEXAS town canc.  
Very rare ..... —
- 572 V. F. copy, tied with GRIDIRON of RICHMOND, VA. This letter, by  
its contents shows that it was probably carried by boat up the river  
to Richmond and cancelled on arrival. Very rare ..... —
- 573 Fair copy, tied on cover with RED PETERSBURG VA. The only one on  
cover in the collection ..... —
- 574 V. F. copy, tied on folded letter with DANVILLE VA. town canc. .... 50.00
- 575 V. F. copy, tied on cover with RICHMOND VA. town canc. .... 50.00
- 576 Two V. F. copies, tied on cover with RICHMOND VA. .... 100.00
- 577 Top diagonal half, V. F. copy, tied on small cover with rare grid ..... 75.00
- 578 Bottom diagonal half, V. F. tied on cover with GALVESTON TEXAS 75.00

These Two Top Horizontal Halves Are the Only Ones I Have Ever Seen.

- 579 Top HORIZONTAL half, tied on small cover with CHAPEL HILL  
TEXAS -canc. .... —
- 580 Top HORIZONTAL half, tied on cover with CHAPEL HILL TEXAS  
town canc. .... —

# 1c ORANGE.

- 581 Very fine, O. G. sheet of 100, printed by De La Rue. Very rare in sheets ..... —

## EXPRESS COVERS.

- 582 V. F. express cover with a pair of 3c 1857, tied with blue LOUISVILLE  
KY. canc. Also pmk. in black ADAMS EXPRESS CO. AUG. 2, 1861.  
Letter sealed on back with rare Adams Express label giving instruc-  
tions how to forward letter from Confederate states to the north.  
Very rare item ..... —
- 583 V. F. folded letter from NEW ORLEANS to N. Y., with a pair of 3c  
1857, tied with LOUISVILLE KY. blue canc. Also pmk. in black  
Adams Express Co. LOUISVILLE KY. JULY 23, 1861. Very rare  
cover ..... —
- 584 V. F. 3c 1860 U. S. entire envelope, canc. in black Adams Express Co.  
LOUISVILLE KY. AUG. 12, 1861. Also pmk. in blue NASHVILLE  
TENN. PAID 10. Very rare ..... —
- 585 V. F. cover with embossed corner card of THE AMERICAN TELE-  
GRAPH CO Pmk. Adams Express Co. OCT 4, AUGUSTA GA. Very  
unusual and rare ..... —
- 586 V. F. American letter express cover, pmk. NASHVILLE TENN. PAID 5,  
containing a letter with the signatures of officials of the company  
JENKINS & MCGILL. Also printed circulars of how to send letters  
from the north to the south and vice versa by express. This cover  
and its contents has been completely written up by Mr. Charles J.  
Phillips in STAMPS, Oct. 13, 1934. Page 53 ..... —

## OFFICIAL ENVELOPES OF CONFEDERATE STATES OF AMERICA.

- 587 V. F. U. S. entire envelope 1853, surcharged C. S. A. P. O. Dept. Signed  
by HAMELL. Pmk. RICHMOND VA. and FREE ..... —
- 588 Fine cover C. S. of America P. O. Dept. Signed by JOE OFFRETT.  
Pmk. RICHMOND VA. FREE ..... —

- 589 3c 1860 entire envelope, surcharged C. S. A. P. O. Dept. Signed by  
JOE OFFRETT. Pmk. RICHMOND VA. FREE ..... —
- 590 Fine 3c 1860 entire envelope, surcharged C. S. A. P. O. Dept. Signed  
by A. DIMITRY ..... —
- 591 Fine orange official envelope C. S. A. P. O. Dept. Signed by B. N.  
CLEMENTS ..... —
- 592 Fine orange face of envelope, same as previous ..... —
- 593 Fine orange official envelope C. S. A. P. O. Dept. Signed by B. BAKER,  
AUDITOR'S OFFICE ..... —
- 594 Fine face of lemon envelope, same as previous ..... —
- 595 V. F. 3c 1860, surcharged Official Business Office Adjutant and In-  
specter Gen. with a pair of 5c local print #206. Also pmk. in red  
ALEXANDRIA LA. Very rare ..... —

# BID SHEET

## WALCOTT'S CONFEDERATES

**ROBERT LAURENCE,**  
30 East 42nd Street, New York, N. Y.

Please purchase for me at your auction to be held in New York, **May 23, 1935**, the lots named below, the prices annexed being my limit on each lot. I agree to remit for purchases in accordance with the terms of the sale.

### References:

Signed

_____ _____ _____ _____ _____	}	_____ _____ _____ _____ _____
---	---	---

[illegible]

**Send bids by AIR MAIL, especially from the West, when time is short.**

[illegible]



**DON'T FORGET**

**NOTICE**  
**To Every Owner**  
**Of This Catalogue**

**DON'T FORGET**

This sale being of unusual importance, and feeling assured that every owner of the catalogue would want to have his record complete, I am offering a printed price list, made to fit the catalogue, to be mailed shortly after the sale, for the price of,

**\$1.00**

---

Please send your remittance early, to

**ROBERT LAURENCE**

**30 EAST 42nd STREET**

**NEW YORK CITY**

**Phone Murray Hill 6-0726.**

---

**ROBERT LAURENCE**

**ROOM 820-821**

**30 East 42nd Street**

**New York, N. Y.**

---