

THE
A. EARL WEATHERLY
COLLECTION



Robert A. Siegel

AUCTION GALLERIES, INC.

120 EAST 56th STREET
NEW YORK CITY, N. Y. 10022
Tel.: (212) 753-6421

CONDITIONS OF SALE

1. The terms of sale are strictly cash on delivery to the highest bidder unless special arrangements have been made prior to the sale.
2. All bids are per lot as numbered in the catalogue unless otherwise announced by the auctioneer at the time of sale. The right is reserved to group two or more lots; to withdraw any lot or lots from the sale, or to act in behalf of the seller. The auctioneer shall regulate the bidding and in the event of a dispute between buyers his decision shall be final.
3. Any lot, the description of which is incorrect is returnable, but only within five days of receipt and in any case it must be received by the auctioneer within four weeks from the date of the auction. All disputed lots must be returned intact as received and the following lots may not be returned for any reason whatsoever: Lots containing ten or more stamps; Lots from buyers who have had the opportunity to examine them before the sale; Lots described as having defects or faults may not be returned because of faults. No illustrated lots may be returned because of centering, margins or other factors shown in the illustration.
4. Successful bidders, unless they are known to us or supply acceptable references are expected to make payment in full before the lots are delivered. Mail bidders will be notified of the amount of their purchases. We reserve the right in our sole and absolute discretion to demand cash payment at the time a lot is knocked down to any bidder who has not previously established credit with us or whose account is in arrears. In the event any buyer refuses to pay cash for any lot at the time it is knocked down to him, the auctioneer reserves the right to re-offer the lot immediately for sale to the highest bidder.
5. If the purchase price has not been paid within the time limit, nor lots taken up within seven days from date of sale they may be resold and any loss arising from such sale will be charged to the defaulter. Any account more than thirty days in arrears is subject to a late payment charge of 1½% per month so long as the account remains in arrears.
6. All lots are sold as genuine but should any lot be proved otherwise by written opinion of any competent, responsible authority acceptable to us, immediate refund of the full purchase price will be made, provided that such claim is made within 25 days from date of sale. If claim is not made within this period, no lots are returnable for any reason at any time. So long as we are notified within the 25 day period that an opinion is being sought the matter will remain open until such opinion is rendered. We will not be responsible for any charges incurred by the buyer for expertization fees and costs unless the opinion states the item is not genuine, in which case we will pay a maximum fee of \$10.00 for each such item.
7. Until paid in full, all lots remain the property of Robert A. Siegel Auction Galleries, Inc. in behalf of the seller.
8. All forwarding charges will be added to the purchase price. The mode of shipment shall be at our option unless we are given specific instructions.
9. Lots may be sent for inspection to buyers known to us upon written application. All such lots must be returned to us by registered mail, adequately insured and within 24 hours after receipt. The applicant assumes all responsibility and for insurance against all risks from time of receipt until they are actually received back by us, and is to pay all expenses of postage and insurance. No lots can be sent for inspection within ten days of the date of sale. Large lots and collections cannot be sent for inspection.
10. The placing of a bid shall constitute acceptance of the foregoing conditions of sale.

ROBERT A. SIEGEL

SYLVESTER COLBY, Licensed Auctioneers

DESCRIPTIONS

EXTREMELY FINE: The finest, condition for noteworthy, outstanding copies.

VERY FINE: (V. F.) In prime condition such as to satisfy the requirements of particular collectors.

FINE: (F) Perforations or margins do not touch design on issues after 1890 but in some cases may just touch in earlier issues. If used, fairly light cancellation.

VERY GOOD: (V. G.) Generally nice appearance but margins or perforations may cut in slightly.

GOOD: Average off-centering or fairly attractive with slight defects.

ORIGINAL GUM is not to be expected on 19th century stamps unless so stated in the description.

MINT: With original gum and never hinged.

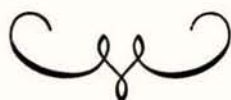
Scott 1972 Specialized Catalogue used for listing lots of U. S. & Possessions. Scott 1972 Standard Catalogue for others.

420th SALE

CONFEDERATE STATES OF AMERICA

The A. Earl Weatherly Collection

Sold by his order



AT PUBLIC AUCTION

Friday, October 20th, 1972, 1:30 P. M.

Robert A. Siegel

AUCTION GALLERIES, INC.

120 East 56th STREET

NEW YORK CITY, N. Y. 10022

Tel.: (212) 753-6421

"GENERAL" ANDREW EARL WEATHERLY

Andrew Earl Weatherly, "General" by virtue of the Board of Trustees of The Confederate Stamp Alliance for his distinguished service as President of that organization and now an Honorary Life President, is one of today's foremost students of the stamps and Postal History of The Confederate States of America. A resident of Greensboro, North Carolina since the early part of the century he has contributed greatly, in many ways, to the cultural life of his city.

A collector since boyhood, his particular interest in the stamps and Postal History of the Confederacy dates from the 1930's. By 1950 the collection had grown to major importance and since then it has won major awards at many national and international exhibitions. No less than nine Gold Medals were awarded him for his showing of the stamps and Postal History of the Confederate States of America.

The collection embraces all aspects of Confederate philately and is full of items of outstanding interest, many being unique or nearly so. It represents a lifetime of original research, including the discovery of a new and hitherto unknown Postmaster's Provisional.

To appreciate the magnitude and importance of the collection on should examine this catalogue lot by lot. One cannot overlook such items as the only known block of the 10c "Frame Line" and the unprecedented number of unique essays of proposed designs.

Covers are noteworthy and represent every phase of C.S.A. Postal History. There are Prisoner-of-War covers from both Northern and Southern Prisons. There are exceptional covers which successfully ran the blockade maintained by the U. S. Navy. There are many Postmasters' Provisionals, some of the highest order of rarity. There are Patriotic Covers and Wall Paper Envelopes. There are covers with U. S. stamps used in the Confederacy; There are Express Mail covers, some of the early "across the lines" service and also some which were literally "smuggled" across the Mississippi River in a special Express service. Also to be found are some rare railroad and river packet covers. The off cover stamps, too, present many unusual items.

In preparing this catalogue for the auction we have availed ourselves of "Gen." Weatherly's research notes which have been very helpful and valuable to the production of the catalogue. There is so much more that could be said, but we find it simplest to fall back on that old "cliche of cliches" . . . The collection speaks for itself.

Robert A. Siegel

420th SALE

OCTOBER 20th, 1972



BID SHEET

ROBERT A. SIEGEL AUCTION GALLERIES, Inc.

120 East 56th Street

New York, N. Y. 10022

Tel.: 753-6421 (Area Code 212)

Please purchase for me at your auction to be held **October 20th, 1972**, the lots named below, the prices annexed being my limit on each lot. I agree to remit for purchases in accordance with the **Conditions of Sale** and return no lots later than three days after receipt.

REFERENCES PLEASE

(if unknown to us)

SIGNED

.....

.....

.....

.....

.....

.....

New York State residents kindly include
County in address.

.....

County

Lot	Bid	Lot	Bid	Lot	Bid

VALUATIONS

Upon request, estimate of value furnished on any lots in this auction.

Lot	Bid	Lot	Bid	Lot	Bid

ESTIMATES

Our sales offer many covers, cancellations, varieties and other items for which there is no catalogue value or where catalogue value does not reflect the actual value. In order to assist our clients, we are placing a fair net valuation on such lots as a guide to bidders. The chart below will be used. For example, E. IV means that our estimated net value on the lot is \$30.00 to \$40.00. Lots may actually realize more or less than our estimates, which are under no circumstances to be considered reserves but merely a guide to bidding.

E. I	up to \$10.00	E. IX	\$150.00 to \$200.00
E. II	\$10.00 to \$20.00	E. X	\$200.00 to \$250.00
E. III	\$20.00 to \$30.00	E. XI	\$250.00 to \$350.00
E. IV	\$30.00 to \$40.00	E. XII	\$350.00 to \$500.00
E. V	\$40.00 to \$50.00	E. XIII	\$500.00 to \$750.00
E. VI	\$50.00 to \$75.00	E. XIV	\$750.00 to \$1000.00
E. VII	\$75.00 to \$100.00	E. XV	\$1000.00 to \$2500.00
E. VIII	\$100.00 to \$150.00	E. XVI	over \$2500.00

CONFEDERATE STATES OF AMERICA

ESSAYS AND PROOFS

Many are from the August Dietz Collection and are unique.

ESSAYS

- 501 E **5c Green & Black, Model**, Card mounted sections to form a complete stamp, Dietz Fig. 1, Washington Portrait, Attributed to American Bank Note Co., Very Fine, Unique (Photo) **E. XIV**
- 502 E **5c Red & Green, Model**, Card mounted sections to form a complete stamp design, Dietz Fig. 2, Cotton Boll, Attributed to American Bank Note Co., Very Fine, Unique (Photo) **E. XIV**
- 503 E **2c, 5c, 10c Black**, Picturing Corn, Wheat & Cotton, respectively, Dietz Fig. 3, 4, 5, Lithographed Essays by A. Stoen & Co., Richmond, Va., Complete Set, Card mounted, minor thins under card, otherwise Very Fine, Very Rare (Photo) **E. XIV**
- 504 E **2c, 10c Black, Pictorial Essays**, Wash drawings by Manouvrier of New Orleans, **2c Cotton Planting Scene, 10c River Scene & Steamboat**, Both on one 2¼ x 3¼" card, or card-mounted, small flaw far from design, Very Fine, Unique, Dietz Fig. 6 & 7 (Photo) **E. XIV**
- 505 E **10c Dark Blue**, Engraved, Die Essay on India, Card mounted, Dietz Fig. 8, Jefferson portrait, Attributed to American Bank Note Co., Small faults, Unique (Photo) **E. XIV**
- 506 E **10c Lake Red**, Engraved, Die Essay on India, Card mounted, Dietz Fig. 8, Attributed to American Bank Note Co., small faults, Unique (Photo) **E. XIV**
- 507 E **10c Black, Essay**, Stone Lithograph, C. S. A. Flag, Dietz Fig. 9, Ample to large margins, thin, otherwise Very Fine (Photo) **E. VIII**
- 508 E **10c Blue, Essay**, Stone Lithograph, C. S. A. Flag, Dietz Fig. 9, Ample to Large margins, thin, otherwise Very Fine (Photo) **E. VIII**
- 509 E **5c Black, Essay, Engraved Liberty Head in Circle**, mounted on card, Spandrels drawn in in pencil, signed "New Orleans, Manouvrier", Dietz Fig. 10 Essay type, but in partial stage, Very Fine, Unique (Photo) **E. XIV**

PROOFS

- 510 P **5c Green, 10c Blue (1P, 2P)**. Proof Impressions from the original engraving on stone, on thin, soft paper, Full margins, Sharp Impressions, Shows detail never found on stamps, 5c thin, other Very Fine, Rare (Photo) **E. XI**
- 511 P **10c Black (2P)**. Proof of Ludwig's Engraving on wove paper, slightly toned & minor thin, Large margins, Very Fine appearance, Rare (Photo) **E. IX**

LOTS ON VIEW FROM OCTOBER 12th, 1972
OFFICES OPEN SATURDAY BEFORE SALE



501



502



503



505



506



507



508



511



504



510



514



515



516



518



517



519



520



512



509



513

512 P	5c Blue, Large Die Proof on Glazed Card (6P). Rich color, Very Fine & Rare (Photo)	E. IX
513 P	5c Black, Large Die Proof on Glazed Card (6TC). Very Fine, on the back is "Presented to August Dietz by De La Rue & Co." at the time of writing his book — "The Postal Service of the C. S." in pencil. A Rare memento of a Great Philatelist (Photo)	E. IX
514 P	5c Rose, Trial Color Proof on thin card (7TC). Large margins, slightly toned, minor thin, Richmond proof, Very Scarce (Photo)	E. VIII
515 P	2c Black, Die Proof with Frame Line (8TC). Large margins, pin-head thin speck, otherwise Very Fine, Very Rare (Photo)	E. IX
516 P	20c Red Brown, Trial Color Die Proof, on Bond paper (13TC). Large margins, Very Fine & Rare (Photo)	E. IX
517 P	20c Dark Green, Large Die Proof on Bond (13P). Shows complete frame line around design, tiny thin, also minor toning in extreme margins which can be easily trimmed off (Photo)	E. IX
518 P	1c Light Yellow, Proof on Glazed Cardboard (14P). Very Fine & Scarce (Photo)	E. VIII
519 P	1c Black, Proof on Glazed Cardboard (14TC). Sharp impression, possibly a Die Proof, Very Fine & Rare (Photo)	E. VIII
520	10c Rose, Portrait of "Stonewall" Jackson, Basic design of the 5c #6; Purely a fantasy with no standing as a stamp or even a proof, Interesting curiosity	—

GENERAL ISSUES

521 ★	5c Olive Green, St. A (1c). Fresh, unused, Very Fine (Photo)	50.00
522 ★	5c Green, St. 1 (1). Block, Fresh, o. g., Large margins, Tiny gum thin in one, otherwise Extremely Fine (Photo)	140.00
523	5c Green, St. 1 (1). Huge margins, peculiar early impression short transfer at top, early state of plate, Very Fine	15.00
524	5c Dark Green (1b). Variety "Spur on Scroll" Pos. 21 St. 2, On small piece, Grid cancel, not tied, Incredible, Gigantic Margins all around, showing next stamps R. & B. An absolutely Fantastic "Gem" (Photo)	14.50+
525	5c Green, St. 1 (1). Horiz. Pair, pos. 97-98 St. 1, Partly severed, B. Sheet margin, slightly in at L. "Southern Express Co. Richmond, Va." cancel, Fairly clear, Attractive & Very Scarce (Photo)	200.00+
526 ★	10c Dark Blue, Hoyer (2b). Fresh, large part o. g., Very Fine (Photo)	40.00
527 ★	10c Dark Blue, Paterson (2b). Beautiful color, margins all around, Very Fine	25.00
528 ★	10c Dark Blue, Hoyer (2b). Block, Fresh, o. g., Three Huge margins, Least bit in at bottom, Pinhead thin speck in one, Very Handsome Block (Photo)	185.00
529 ★	10c Light Blue, Paterson (2a). Block, Large margins, Vertical crease, Very Fine appearance (Photo)	120.00
530	10c Dark Blue, Hoyer (2b). Huge margins, incl. bit of next top stamp, Tiny, insignificant thin speck, Extremely Fine appearance (Photo)	25.00
531	10c Blue, Paterson (2). Wide margins, incl. B. sheet margin, Most of neat "Forestville" pmk., faint, barely visible crease, otherwise Extremely Fine	21.00+
532	10c Dark Blue, Hoyer (2b). Horiz. Pair, Huge margins, Rich Color, Fine Impression, Bold "Georgetown, S. C." pmk. Tiny pin-point toned speck in B. margin, A Wonderfully Fine & Handsome Pair (Photo)	200.00
533 ★	2c Green (3). Rich color, Very Fine (Photo)	82.50
534 ★	2c Green (3). Block, Fresh, o. g., Large margins to barely touched at left, Pinhead thin speck, Faint crease across top pair, A Handsome & Rare Block (Photo)	500.00
535	2c Green (3). Ample to Large margins, part of "Richmond, Va." pmk., tiny crease at tip of corner, otherwise Very Fine (Photo)	130.00
536 ★	5c Blue, St. 2 (4). Huge margins, Extremely Fine	13.00

537	★	5c Blue, St. 2 (4). Block, Large margins, Fresh, o. g., tiny hinge thin in one, otherwise Extremely Fine	(Photo)	65.00
538		5c Blue, St. 2 (4). Large margins, Bold "Flower" cancel. (8 diamonds in circle) perfect strike, Extremely Fine Showpiece	(Photo)	E. VII
539		5c Light Milky Blue, St. 3 (4b). Vertical Pair, Large margins, Tied by neat Blue Grids on small piece, Very Fine	(Photo)	E. VI
540	▣	5c Blue, St. 2 (4). Block, Clear to Large margins all around, "Richmond, Va. Jul. 11, 1863" pmk., Creased, mostly at Bottom of the top pair, otherwise Very Fine, Scarce & Very Attractive	(Photo)	200.00
541	★	10c Deep Rose (5). Gorgeous Color, Fresh, o. g., Huge margins & includes half of next stamp below, showing "Scratched Stone" pos. 39 & 49, Tiny negligible thin speck, otherwise Extremely Fine	(Photo)	150.00+
542	★	10c Rose (5). Block, Splendid color, Fresh, nearly full o. g., Large margins all around, Unusual printing var. in lower pair, A Gorgeous Block, Very Fine, Rarely seen in such choice condition	(Photo)	1,000.00
543		10c Deep Rose (5). Bright color, Ample to large margins, neat "Mobile, Ala." Double circle, small thin spot, Very Fine appearance	(Photo)	70.00
544	★	1c-20c Balance of General Issues (6-8, 11-14). All Very Fine		49.50
545	★	5c Blue, London, Local Prints (6, 7). Each in Block, Fresh, o. g., Extremely Fine		27.00
546		5c Blue, London Print (6). Large margins, Blue oval cancel. in Spanish (not clearly readable) indicating use on Blockade Run letter, probably via Mexico, or via Cuba, Very Fine, Rare	(Photo)	E. VII
547		5c Blue, London Print (6). Horiz. Pair, Bold "Buck Eye (Ga.)" cancel. in Red Double Circle, perfect strike, ms. date "Sept. 30, 1862", Extremely Fine, A "Stunning" pair	(Photo)	E. V
548		5c Blue, London Print (6). Horiz. Strip of Four, Clear to Large Margins all around, "Chattanooga, Ten., Aug. 30, 1862" pmk., Trivial faults, Extremely Fine appearance		E. III
549	▣	5c Blue, London Print (6). Block of Six, Margins nearly all around, two top stamps barely touched, 4-Ring Concentric cancels, tiny inconsequential flaws, Unusually Fine for such a scarce block	(Photo)	E. VI
550		5c Blue, Local Print (7b). Printed on Both Sides, Vert. Pair, Large margins to touched, neat Nov. 1862 pmk. The other side, with full design was also used and bears a light ms. cancel., Fine, A Very Rare & Attractive Showpiece	(Photo)	370.00+
551	▣	5c Blue, Local Print (7). Block, Three large margins, narrow to barely touched at left, Light "Auburn, Ala." pmk., one stamp has small toned spot, Fine & Handsome, Very Scarce	(Photo)	65.00
552	★	2c Pale Red (8a). Block, with Vertical Gutter Between, Fresh, o. g., Very Fine	(Photo)	E. V
553	★	2c, 10c, 20c Engraved Issues (8, 11, 12, 12d, 13). Blocks, incl. K. & B. #12d in corner block, Fresh, nearly all o. g., Very Fine		97.50+
554		2c Red Brown (8). Large to Huge margins, Red Town cancel. (Greensboro, N.C.) partly clear, Extremely Fine	(Photo)	70.00
555		2c Red Brown (8). Large margins, Tied on small piece by "Richmond, Va., May 3, 1862", Early use, Very Fine	(Photo)	35.00
556		2c Red Brown (8). Three huge margins, narrow at R., Tied by Bright Red "Raleigh, N.C." pmk. on small piece, Very Fine	(Photo)	70.00
557		2c Red Brown (8). Three large margins, bit in at upper right, Tied by Blue "Charlottesville, Va., Apr. 28, 1863", at one time the earliest known date, Fine, signed "Dietz"		37.50+
558	▣	2c Red Brown (8). Block, Large margins, Rich, Deep color, "Griffin, Ga." pmk., perfect strike, Extremely Fine	(Photo)	E. XII
559	★	10c Blue, "T-E-N" (9). Fresh color, Large margins, Extremely Fine	(Photo)	110.00



522



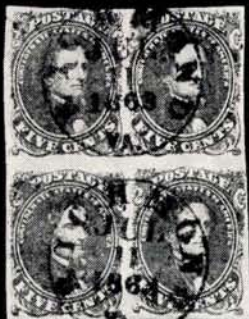
528



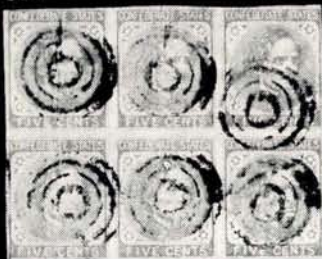
529



537



540



549



551



552



558



534



569



572



573



582



583



653

560	★	▣	10c Blue, "T-E-N" (9). Block , Fresh color, nearly full o. g., Large margins, Couple of minor toned spots, really almost negligible, otherwise Very Fine, Rare Block (Photo)	500.00
561			10c Gray Blue, "T-E-N" (9b) . Narrow margins, barely touching two points. Bold British Cancellation "W" & "35" in oval of bars , probably London. Unquestionably used on a Blockade Run cover, East bound, which got through the blockade, Fine, Very Rare (Photo)	E. IX
562			10c Gray Blue "T-E-N" (9b) . Incredibly large margins, Magnificent Color, neat light town pmk., slightly thin, otherwise Extremely Fine ... (Photo)	90.00
563	★		10c Blue, Frame Line (10) . Unused, Three full frame lines and approximately half of the fourth, a few pin-point thin specks, otherwise Exceptionally Fine (Photo)	600.00
564	★		10c Blue, Frame Line (10) . Complete line at botom, most of R. frame line, traces of line at top, cut into at left, Fresh, large part o. g., wide pre-printing fold opened out, Very unusual variety and certainly Very Rare on a "Frame Line" (Photo)	600.00
565	★	▣	10c Blue, Frame Line (10). The Famous Unique Block , Complete outer frame lines at left & bottom, Large margins except upper right stamp slightly in, upper left stamp has thin spot, minor toning spot but all these notes on condition are immaterial since this is the only block in existence. An outstanding Exhibition Piece (Photo)	E. XVI
566			10c Milky Blue, Frame Line (10a) . Full frame lines T. & B., parts on sides, Fresh color, "Mobile, Ala." Double circle pmk., slight thinning, Extremely Fine appearance (Photo)	300.00
567			10c Blue, Die A, B (11, 12) . Large margins to trifle cut in, Each tied on small piece by Brilliant Red Town pmks., Fine, Very Colorful & attractive	30.00
568			10c Dark Blue, Keatinge & Ball, Ty. A, B (11b, 12d) . Large margins, Very Fine, the Ty. A with full bottom sheet margin & "MBIA, S.C." of bottom imprint, Very Fine (Photo)	E. III
569		▣	10c Blue, Ty. A (11). Block , Large margins all around, neat "Harrisonburg, Va." pmk., on piece of album page described & signed by E. S. Knapp as genuine, Extremely Fine (Photo)	45.00
570	★		10c Deep Dark Blue, K. & B. (12d). Horiz. Pair , Bottom sheet margin with Plate "No. 3" & part Imprint, Fresh, o. g., negligible toned spot in margin, Very Fine (Photo)	E. II
571	★	▣	10c Blue (12). Block , Part of Keatinge & Ball Imprint & Pl. No. 2, Large part o. g., Very Fine (Photo)	E. IV
572	★	▣	10c Blue, Ty. B, Perforated (12e). Block , Fresh, o. g., Very Fine ... (Photo)	70.00+
573		▣	10c Blue, Ty. B (12). Block , Large margins, "Mobile, Ala." cancel. in double circle, Very Fine & Scarce (Photo)	110.00
574	★	▣	20c Green (13). Block of Eight with Full Bottom Imprint , Large margins, Fresh, part o. g., couple of pinholes in selvedge, Very Fine & Attractive (Photo)	130.00+
575			20c Green (13) . Large margins, Tied by Bright Red "Greensborough, N.C." on small piece, Extremely Fine (Photo)	85.00
576			20c Green (13) . Ample to large margins, Blue "Greensborough, N.C." pmk., on thin paper, Very Fine (Photo)	55.00
577			20c Green, Rouletted (13 var.) . Deep color, town pmk., Roulettes show all around; while unofficial, there is no doubt this was an intended means of separation and not merely torn along a ruler or knife edge, Very Fine, Very Rare (Photo)	E. VIII
578			20c Green (13) . Large, though irregular, margins all around, Tied by "Fayetteville, N.C." in Double circle, inverted "1862" year date logo, though the 20c was issued in 1863; another example of the disregard of year date in old Union postmarks, Very Fine (Photo)	40.00+



534



542



607



648



560



565



649



652



666



679

579	20c Green (13). Ample to Mostly Large margins, Brilliant Red "Greensborough, N.C." pmk., small faults, Very Fine appearance (Photo)	85.00
580	20c Green (13). Vertical Strip of Three, Large to Huge margins incl. B. sheet margin, neatly tied on small piece by "Fayetteville, N.C." pmk., trifling flaws at left from being near edge of cover, nevertheless a Remarkably Fine & Rare strip (Photo)	165.00+
581	20c Green, Bisect, Upper Right Diagonal Half Used for 10c (13c). Large margins, Well tied by "Houston, (Tex.);" pmk. on small piece, Faint crease, Very Fine appearance (Photo)	E. IX
582	★田 1c Orange (14). Block, Full R. B. Corner Sheet margin, Brilliant color, Fresh, o. g., Extremely Fine (Photo)	120.00+
583	★田 1c Orange (14). Block, Fresh, o. g., Very Fine (Photo)	120.00

AUTOGRAPHS

584	☒ R. E. Lee, Gen., Military Post Franking on small orange envelope addressed to Gen'l. Fitz Lee, Cavalry (Fitzhugh Lee, nephew of Robert E. Lee). Cover bit aged & small tears sealed, without flap, Fine, Ex-MacBride & signed by him. A Rare & Choice piece of Confederate Postal History, in better condition than usually found (Photo)	E. XII
-----	---	---------------

CONFEDERATE COVERS

U. S. Stamps Used in the C. S. A. or Independent States (Arranged Alphabetically by Towns)

585	☒ Apalachicola, Fla. May 8, 1861, Small circle, bit blurry but entirely readable ties 3c Red (26). Fine to neat cover to N. Y. City. Confederate States Usage, Fine, Very Rare, Ex-Antrim & signed MacBride who has noted that only one or two other Florida Confederate usages are known (Photo)	E. XII
586	☒ Ashville, N.C., May 27, 1861, Clear pmk. on 3c Star Die Entire (U27) to Rutherfordton, N.C., First Day Usage as a Confederate State "Gen." Weatherly claims "unique", Small mend at top, otherwise Very Fine (Photo)	E. X
587	☒ Carrollton, Miss. Feb. 4, 1861, Clear circle over stamp of 3c Star Die Entire (U27) to New Orleans. First Day postmark as a Confederate State, Very Fine & Rare (Photo)	E. X
588	☒ Charleston, S.C. Dec. 20, 1860, Secession Day, Clear Double circle on 3c Star Die Entire tied with 3c Red (26) on double weight cover to Mass., First Day Use as any Independent State, Choice, Fresh cover of utmost rarity & great historic value (Photo)	E. X
589	☒ Charleston, S.C. Jul. 20, 186- , Mostly clear pmk. ties 3c Red (26) to small local Drop Letter, overpayment of 1c. According to Dietz the "1" was dropped from the year date logo after secession. Very slight aging, Fine, Scarce Confederate usage Drop Letter (Photo)	E. IV
590	☒ Columbia, S.C., May 20 (1861), Bold Blue circle ties 3c Red (26), perf. faults, to small cover (without flap) to Col. A. P. Calhoun Pendleton, S.C., Letter, dated May 19, 1861 from John C. Calhoun, nephew of the famous statesman whose name he bears. Confederate States usage, Fine & Attractive, Ex-Kohn	E. IV
591	☒ El Dorado, Ark., May 11 (1861), Light, readable circle on 3c Star Die Entire (U27) to N.C., Used during the 12 days of Arkansas Independent Statehood, Choice cover of the utmost rarity (Photo)	E. IX
592	☒ Emory, Va., May 4 (1861). Blue pmk. ties 1c Blue, Ty. V (24) to embossed Lady's envelope, Local Drop letter, Sentimental Valentine enclosed, signed "My April Fool", Used during Virginia Independent Statehood, Fine, Scarce	E. V



521



524



525



526



530



532



533



535



53R



543



546



547



541



555



556



559



554



561



564



563



564



550



566



576



577



579



578



580



575



581

- 593 ☒ **Griffin, Ga., May 31 (1861).** Clear circle on 3c Star Die Entire (U27) to Greenville, Ga. **Last Day U. S. Stamps Legally Used in the Confederacy,** Very Fine & Rare (Photo) **E. VIII**
- 594 ☒ **Limestone Springs, S.C., Apr. 17 (1861).** Clear small circle on 3c Star Die Entire (U26) to Unionville, S.C., Few very light toned spots, Very Fine, **Rare Confederate Usage** (Photo) **E. VI**
- 595 ☒ **Mobile, Ala., May 8, 1861,** Clear double circle ties Strip of Three 1c Blue, Ty. V (24) Tiny perf. flaws, to fresh cover to Petersburg, Va. Tip of T. L. corner of cover restored, **Confederate States Usage,** Fresh & Handsome cover (Photo) **E. VII**
- 596 ☒ **Richmond, Va. May 3, 1861.** Bold circle ties 3c Red (26) to neat envelope to Cobham Depot, Va. **Independent Statehood Usage,** which lasted only 19 days, Exceptionally Fine (Photo) **E. V**
- 597 ☒ **San Antonio, Tex., Feb. 19 (1861).** Bold Blue circle ties 3c Rose Red (26) Fine, to neat cover to Bastrop, Texas. 1861 docketing & letter enclosed. **Used during the 34 days of Texas Independent Statehood,** The highly significant letter tells of the surrender of Union troops to the Texas State Military. A marvelous piece of Postal History (Photo) **E. XI**
- 598 ☒ **Savannah, Ga. May 20, 1861** Clear pmk. & grid tie Fine 3c Red (26) to Rare **Regimental Patriotic cover** of The Banks County Guards. Circular design, Symbolic Background. Small closed tear, **Confederate States usage** and, according to "Gen." Weatherly, unique usage on a Patriotic (Photo) **E. XII**
- 599 ☒ **(Holt's Store, N.C., May 20, 1861)** Heading on Bill Head of Edwin M. Holt, with original envelope, Free Franked by E. M. Holt, P.M., to Greensboro, N.C.; **Used on First Day of North Carolina Independent Statehood** which lasted only a week before becoming the 10th Confederate State. Very Fine & of utmost rarity **E. VII**
- 600 ☒ **Shreveport, La. 13 Apr. 1861,** Sharp, clear double circle on 3c Nesbitt Entire (U10) to Tennessee, **Confederate States Usage,** Very Fine & Handsome (Photo) **E. VI**
- 601 ☒ **Wartrace, N. & C. R.R., June 10, 1861.** Oval R.R. pmk., bit blurred but entirely legible, struck twice, one tying 3c Red (26) Top perfs trimmed on small envelope to Mississippi, **Used during Tennessee Independent Statehood,** Very slight nicks at top, A Great Rarity, claimed to be "Unique" by "Gen." Weatherly (Photo) **E. X**

ACROSS THE LINES EXPRESS CO. COVERS

(See also Lot No. 783)

- 602 ☒ **Adams Ex. Co., Louisville, Ky. Jul. 31, 1861** Bold circle, on cover to Conn., Two 3c Red (26) Fine, Tied by "Louisville, Ky. Aug. 1, 1861" & Blue grids. Back of cover **sealed with large Blue Adams label offering service to the Confederacy,** (See Chase, 3c 1851 Revised, P. 323) Cover opened to show both sides & reinforced at center fold, A marvelous rarity, Ex-Chase, Knapp, Emerson, Shenfield (Photo) **E. XIII**
- 603 ☒ **Adams Ex. Co., Louisville, Ky. Aug. 12, 1861** over stamp of 3c Star Die Entire (U27) to New Orleans, Blue "Nashville, Ten., Aug. 14, 1861" pmk., matching "**Paid**" & "**10**". Beautiful example of this rare North to South usage (Photo) **E. XI**
- 604 ☒ **American Letter Express,** White label claiming 15c Due (see photo for full text) affixed on cover to N. Y. City, 3c Rose (26) just tied by Blue "Louisville, Ky. Aug. 10" and matching grid, Partial impression of a then-current Dime in Wax Seal, "Due 15" in ms. under the label, seen when light shown through. Very Fine, Extremely Rare, Ex-Needham, Antrim (Photo) **E. XII**

584
G. D. Lutz
Caraly

587
PROLIT
Hoy. Ho.

585
FRI
THREE CENTS

589
W. J. Smith
Care Post Office
Charleston
June 20, 1861

586
J. C. Lenthrop
Rutherfordton
N. Carolina

595
J. T. Russell Esq
Petersburg

588
CHARLESTON
DEC 20
S. C.
M. B. Thomas

594
WESTON
THREE CENTS

593
THREE CENTS

591
THREE CENTS

598
BANKS COUNTY CLERK
SAVANNAH
Nov. Robert A.

597
THREE CENTS

596
THREE CENTS

601
THREE CENTS
Lucia A. Hester

600
THREE CENTS
To J. H. Gant Esq

604
Due the AMERICAN LETTER EXPRESS Co \$5, send the postage (if needed) on this letter. Send the amount in money to the Company at Louisville, Ky.
Messrs Tobias Hondricks & Co
New York
N.Y.

603
THREE CENTS
Wm. Carroll Esq
New Orleans
Louisiana

"U. S. STAMPS NOT RECOGNIZED" COVERS



- 605 **South'n Letter, Unpaid, Bold Block caps, Two Lines in Blue, matching large "Due 3" on 3c Star Die Entire (U26) to N. Y. City, Clear "Charleston, S.C., Jun. 11, 1861" pmk. & "Paid 10" in Circle. Cover has very tiny nick restored; One of the finest examples known of this Very Rare Civil War marking. A Showpiece! (Photo) E. XV**
- 606 **Cannot Be Forwarded, Clear strike in long box, rounded ends on 3c Pink Entire (U34). ms. pmk. of "Ridge, (Texas)" to Marshall, Tex., "New Orleans, La." pmk. on flap where the letter was stopped & forwarding denied. One of the rarest Civil War markings (Photo) E. XIII**

POSTMASTERS' PROVISIONALS

- 607 **Athens, Ga., 5c Red (5X2). Large left margin, clear to barely touched other sides, Grid cancel., Fine example of this very rare provisional, signed "Dietz" (Photo) 950.00**
- 608 **Athens, Ga. 5c Dull Purple (5X1). Even margins all around, tied by neat Grid, Clear "Athens, Ga., Paid" pmk. on fresh, small cover to Savannah, Ga., Very Fine, A Gorgeous Example (Photo) 300.00**
- 609 **Atlanta, Geo., 5c Black on White (6XU2). Clearly struck on Patriotic Cover in the Blue Canton of over-all 7-Star Flag (Dietz Ty. A-3), Neat "Atlanta, Ga. Jul. 5, 1861" pmk., without flap, sealed tear, Fine appearance and Very Rare (Photo) 750.00**
- 610 **Atlanta, Geo. 5c Black on White (6XU2). Bold Strike on Patriotic Cover, 11-star Flag (Dietz Ty. B-50). Bold "Atlanta, Ga., Jul. 4, 1861" pmk., Flap mended wth tiny restored nick at top, otherwise Very Fine, Unusually Fresh & Handsome, Letter on matching Patriotic stationery enclosed (Photo) 750.00**
- 611 **Atlanta, Geo., 2 (6XU8 var.). Perfect Bold strike on Orange envelope, 2c Circular rate to Griffin, Ga., Neat Nurseryman's corner card, Very Fine, An Extreme Rarity, (listed only on Buff, at \$500.00) A Spectacular Exhibition Piece (Photo) 500.00+**

40c
1861
KY.

ADAMS EXPRESS CO. * JUL 31 1861 * OAKSIDE OREGON

H. Williams

602

*Cluster
Conn*

Paid 3/4

PAID & FORWARDED

606

*to Henry M. Jones
Care of Dr Jos Taylor
Marshall Texas*

THE ADAMS EXPRESS COMPANY,
S. A. JONES, AGENT,
LOUISVILLE, KY.

Will forward letters to the Confederate States when the following directions are observed:

Enclose each letter in a U.S. GOVERNMENT ENVELOPE—an ordinary envelope with a stamp affixed **will not answer.** The Company will forward and deliver at any point where it has an office, or will mail as near as possible to the point of address, paying Confederate postage, for a fee of 25 cents.

The rate here given is for letters not exceeding 1/2 oz. in weight, each 1/2 oz. being charged 3 cents by U. S. Government, and 25 cents by the Express Company.

ATLANTA GEO PAID 5

610

ATLANTA GEO JUL 1 1861

*to Mrs. Jones
Columbus*

608

J. H. Brown

ATLANTA GEO PAID 10

612

ATLANTA GEO OCT 1 1861

*L. C. Beckley
of Col. W. Phillips
Flays Brigade*

DOWNING-HILL NURSERY,
ATLANTA, GEORGIA.
PETERS, HADDEN & CO., Proprietors.

611

ATLANTA GEO PAID 2

J. H. Andrews Esq

P. O.

5

615

*Samuel West
to Blackman*

609

ATLANTA GEO PAID 5

*to Dr. H. G. Blackman
Mississippi*

P. O.

5

614

*to Dr. H. G. Blackman
Mississippi*

- 612 ☒ **Atlanta, Geo. 10c Black on Orange (6XU13).** Bold strike, Clear "Atlanta, Ga., Oct. 11, 1861" pmk. on cover with military address to Floyd's Brigade, Lewisburg, Va., Small part of flap torn, Very Fine (Photo) 150.00



- 613 ☒ **Autaugaville, Ala. 5c Black on Gray Green (10XU1).** Fine impression on slightly reduced envelope to Marion, Ala., Neat "Autaugaville, Ala." pmk. in small circle; Exceptionally attractive example of this great rarity, only two claimed to be on record, Ex-Casparly, with P. F. Certificate (Photo) 1,200.00
- 614 ☒ **Baton Rouge, La., 5c Green & Carmine (11X2).** Large margins to partly touched lower right, Nicely tied by Oct. 1861 town pmk. on neat cover to Mississippi, Very Fine (Photo) 450.00
- 615 ☒ **Baton Rouge, La., 5c Green & Carmine (11X3).** Criss Cross border, Large margins to slightly in at bottom, Light town pmk. ties on neat cover to Mississippi, Fine example of this exceedingly scarce stamp, Ex-Casparly (Photo) 950.00
- 616 ☒ **Carolina City, N. C., 5 Paid, Oct. 8,** Clear circle on cover to N. C. with illustrated corner card of Hillsborough, N. C. Military Academy, Very slightly aged, Very Fine, Long recognized by Dietz as a Provisional but not listed in Scott (Photo) E. IX
- 617 ☒ **Carolina City, N. C., 5 Paid, Nov. 30,** Clear strike in irregular circle at upper right of neat envelope to Deals Mills, N. C., Very minor aging, Very Fine Provisional, Unlisted in Scott (Photo) E. VI
- 618 ☒ **Chapel Hill, N. C., 5c Black on White (15XU1). A Patriotic Cover, 10-Star Flag (Dietz B-35)** Clear impression, clear "Chapel Hill, N. C., Jan. 27" (1862) pmk. to Lenoir, N. C. A Turned Cover, second use with 10c Blue (11) ms. "Lenoir, N. C." pmk. to Cap't. Lenoir at Forks of Pigeon, N. C. Cover refolded for second use. Fine, A Sensational cover of the utmost rarity, perhaps unique (Photo) E. XIV
- 619 ☒ **Charleston, S. C., 5c Blue (16X1).** Large to Huge margins with dividing lines 3½ sides, nicely tied by town pmk. on military cover imprinted "Head Quarters, Commissary General's Department" to Columbia, S. C., Crease across cover well clear of the stamp, Choice & Handsome (Photo) 190.00+



HILLSBOROUGH, N. C.
Military Academy.

*Mrs Mary Burgess
Franklinville*

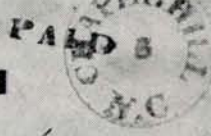
M. Blair



616



617



618



620

*Mr. Charles F. C. Catson
Capt Haskell's Company
Greys B Co*

"HEAD QUARTERS,"

Commissary General's Department.

619

H. G. De Saupure



623



621



Allen J. Green



626

627



629

*Mrs. Imogen Barron
Columbus, Ga*



631



G. M. Bradford Esq



630

I-U-K-A
PAID 5 CENTS

*Mr. W. D. McKnight
Campus & Hatcher Nashville
June*



632

*Mrs. Bettie B. Amack
Spurta Georgia*

- 620 ☒ **Charleston, S.C., 5c Blue (16X1).** Two singles, each with incredible margins showing dividing lines nearly all around. Well tied by "Charleston, S.C., Sep. 25, 1861" pmk. on cover with military address, "Capt. Haskells Company, Greggs Regiment, Suffolk, Va." Sealed tear & flap mended, Very Fine & Attractive (Photo) 255.00+
- 621 ☒ **Charleston, S.C., 5c Blue on White Entire (16XU1).** Unusually fresh, neat Aug. 21, 1861 pmk. to Columbia, S.C., without flap, Ex-Emerson, Signed Ashbrook, Very Fine (Photo) 200.00



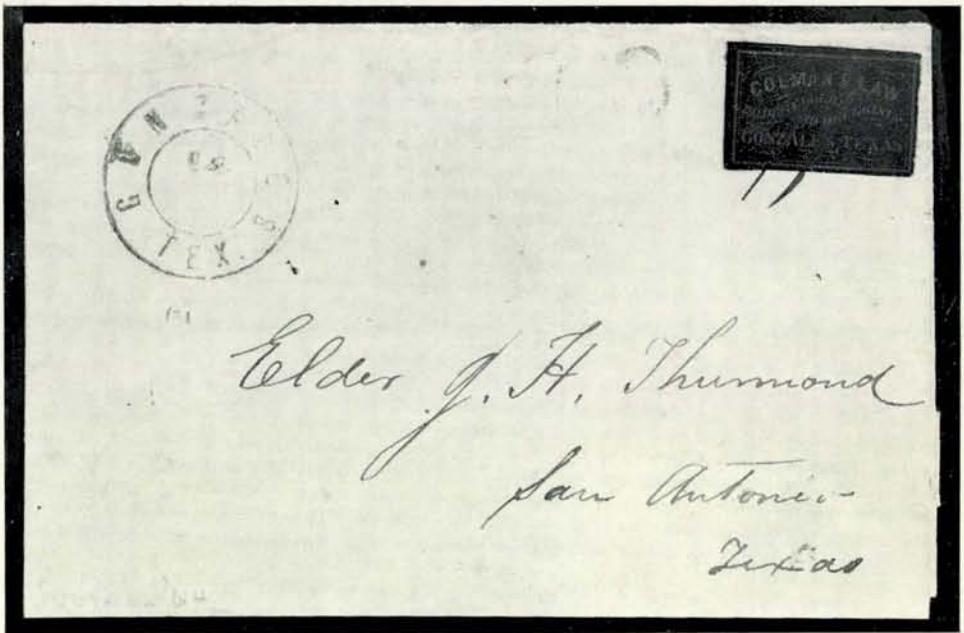
- 622 ☒ **Danville, Va., 5c Red (21X1).** Neatly cut to shape, almost entirely clear of design, Tied by Blue "Danville, Va." struck partly off the small neat cover to Petersburg, Va., Very Fine, Ex-Emerson (Photo) 1,500.00
- 623 ☒ **Danville, Va., 5c Black on Dark Buff (21XU3).** Clearly imprinted at upper left of cover to Greensboro, N.C., mostly clear "Danville, Va." pmk., slight wear & aging, still a Fine example of this rare Provisional, signed "Dietz" (Photo) 550.00

LOTS ON VIEW FROM OCTOBER 12th, 1972

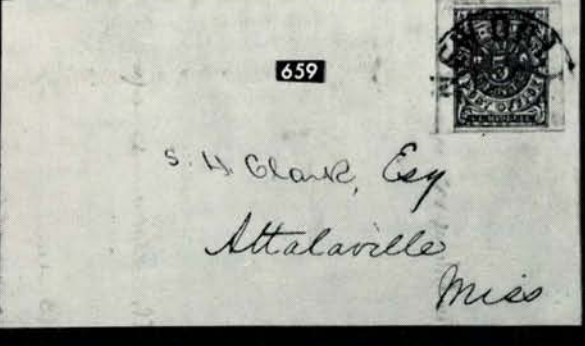
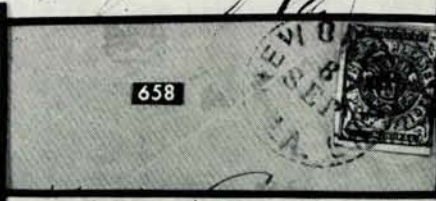
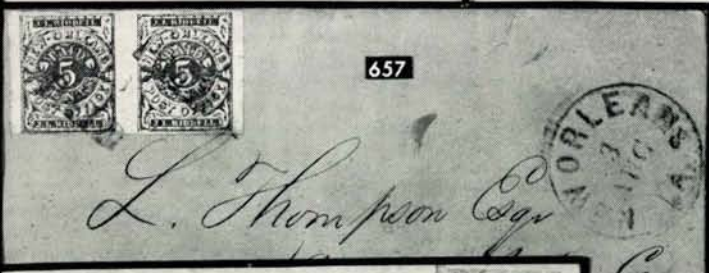
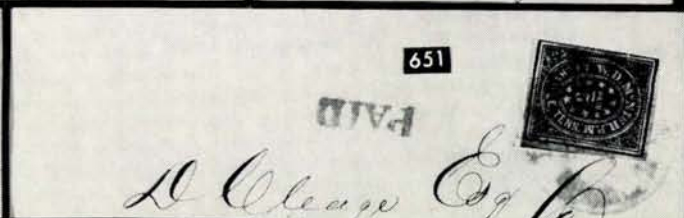
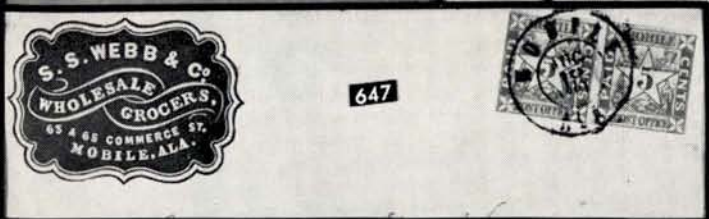
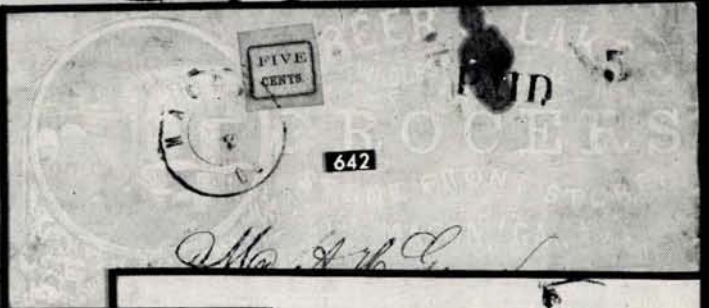
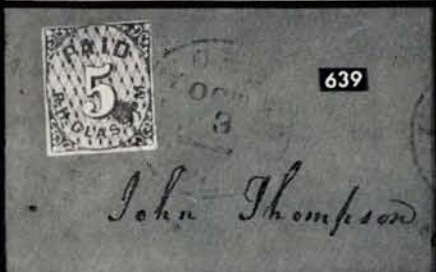
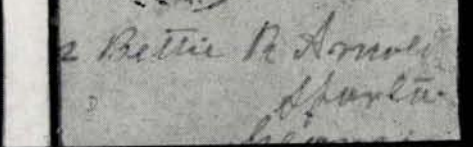
OFFICES OPEN SATURDAY BEFORE SALE

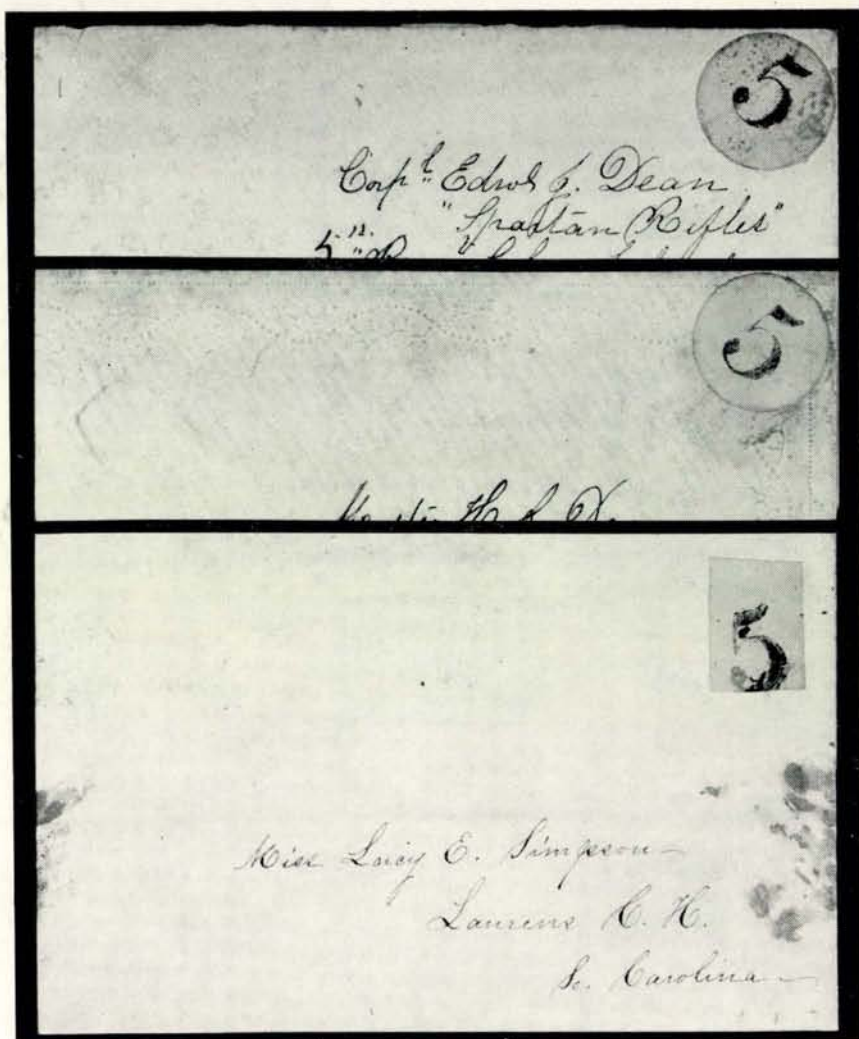


- 624 **Emory, Va. 5c Blue (24X1).** Imprinted on sheet margin of 1c Blue (24) perforated three sides, the type with "Paid" over the "5" tied by ms. cancel. on double weight cover with additional "Paid" & "5" handstamped on cover to Monterey, Va. Military address, 39th Reg't Va. Vol. Long Aug. 5, 1861 letter enclosed, strong war sentiment, also photo of addressee, who died of wounds incurred at Monterey. This cover & letter as well as the following lot were returned with his effects, A matchless rarity, Signed "Dietz" (Photo) 1,500.00
- 625 **Emory, Va. 5c Blue (24X1).** Imprinted on sheet margin of 1c Blue (24) perforated three sides, type with "5" over "Paid", "tied" by slight soiling, Bold Blue "Emory, Va." pmk., letter enclosed, same address & pedigree as preceding lot, Signed "Dietz" (Photo) 1,500.00
- 626 **Emory, Va. 5c Blue (24XU1).** Impressed at T. R. in Bold octagon, "Emory, Va." pmk. on cover to Marion, Va., Back of cover extensively restored, Very Fine appearance, Very Rare and much undercatalogued (Photo) 300.00
- 627 **Fredericksburg, Va., 5c Blue on Bluish (26X1).** Large margins nearly all around, Town pmk. well inked and a trifle oily, nicely tied on folded letter to Warrenton, Va., written & signed by the P. M., Choice & Handsome, Ex-Casparry (Photo) 650.00



- 628 ☒ **Gonzales, Tex. (10c) Gold on Garnet (30X2).** Large margins, tied by two neat pen-strokes. "Gonzales, Tex." Double circle pmk. & light "Paid" on July 1864 folded letter to San Antonio. Very Fine & of the utmost rarity, Ex-Caspary, where described "Possibly unique on cover." With P. F. Certificate which states stamp is genuine but declines an opinion as to its use on the cover (Photo) 2,750.00
- 629 ☒ **Greensboro, N.C. 10c Red on Light Buff (32XU2).** Mostly clear impression at T. R. of cover to Richmond, Va., Readable Red "Greensborough, N.C." pmk., Addressed by Samuel Barron, famous C. S. A. Naval Officer to his daughter, in care C. S. Navy Dept., Fine & Rare (Photo) 400.00
- 630 ☒ **Iuka, Miss., 5c Black on White (42XU1).** Imprinted at T. R. on cover with fancy Iuka corner card, to Nashville, Tenn., small faults in corners & on back, trifle toned, Fine for this rare provisional (Photo) 375.00+
- 631 ☒ **Knoxville, Tenn. 5c Carmine (47X2).** Three large margins, Frame line partly shaved at left, Tied by "Knoxville, Ten. 5 Paid" in circle (Provisional Type) on neat cover to Richmond, Va., with "Advertised 2" in fancy frame & Richmond pmk., A Sensational Rarity, Very choice and the usage believed unique (Photo) 850.00+
- 632 ☒ **Lake City, Fla., 10c Black (96XU1).** Control mark in black circle on flap; used in Charleston, S. C. where a B. imprint 10c Blue (11) was applied over the provisional marking & tied by clear "Charleston, S.C." pmk. on neat cover to Sparta, Ga., Very Fine, An extremely rare cover (Photo) 750.00
- 633 ☒ **Lake City, Fla. 10c Black on Buff (96XU10).** "E. R. Ives" control on back, clear pmk. on neat cover to Sparta, Ga., Very Fine, Very Rare Florida provisional (Photo) 750.00
- 634 ☒ **Lenoir, N.C., 5c Blue & Orange (49X1).** Three margins, frame line halved at left, neat ms. "X" cancel. not tied, small Blue pmk., addressed to Capt. Thomas J. Lenoir, Wilmington, N.C. as member of Clingman's Regt., Very Choice, Extremely Scarce (Photo) 850.00+
- 635 ☒ **Lenoir, N. C., 5c Blue on Amber (49XU3).** Well impressed at T. R., Clear Blue pmk. on cover to Fort Defiance, N. C., Minor aging, small flaws in corner, otherwise Very Fine (Photo) 300.00





636

637

638

LIMESTONE SPRINGS, S. C.

PROVISIONAL DISCOVERED BY "GEN." WEATHERLY

- 636 **Limestone Springs S. C. 5c Black on Light Green, Dietz Ty. I (Unlisted in Scott, See Dietz, p. 123.).** Die Cut, not cancelled, but tied by minor age spots. Military address to Tudor Hall, Va., written by sister of addressee, known to have been in Limestone Springs at that time, Dietz records four covers known. (1959) bearing five stamps. With certificate of authenticity as a genuinely used provisional from the Confederate Stamp Alliance, Very Fine (Photo) **E. XV**
- 637 **Limestone Springs, S. C., 5c Black on Light Green, Dietz Ty. I (See preceding lot)** "tied" by embossing of small Ladys' envelope to Spartanburg C. H., S. C., ms. "via Jonesville", in same handwriting as preceding lot, Very Fine, with Confed. Stamp Alliance Certificate (Photo) **E. XV**
- 638 **Limestone Springs, S. C., 5c Black on Light Blue, Dietz Ty. II (See preceding lot)** Cut Square, tied by tiny toning spot on small envelope to Laurens, C. H., S. C., Cover with toned spots at sides, in same handwriting as preceding lot, with Confed. Stamp Alliance Certificate, A Great Rarity (Photo) **E. XV**

639 **Lynchburg, Va. 5c Dark Blue (52X1b).** Clear to Large margins, prominent printing or plate flaw next to numeral, tied by light town pmk., repeated on the neat cover to Amherst C. H., Va., Very Fine & Rare (Photo) 850.00+



640 **Macon, Ga., 5c Black on Gray Green (53X2).** Clear to Large margins, incl. R. Sheet margin, nicely tied by Double circle on fresh cover to Athens, Ga., Very Fine, Ex-Caspary (Photo) 750.00

641 **Macon, Ga. 5c Black on Yellow (53X3). Horiz. Pair, Top Left Corner Sheet margins,** Large margins other sides, Lightly tied by Double circle on **Patriotic Cover** 7-Star Flag (Dietz Ty. B-9) on fresh cover to Prince Edward C. H., Va., An astounding, magnificent rarity, almost certainly unique, Ex-Caspary (Photo) 2,500.00

642 **Macon, Ga., 5c Black on Yellow (53X4).** Large to Huge margins tied by Double circle pmk., with additional "Paid" & "5" on gray over-all litho advertising cover of Macon grocer, Toned spot over the "Paid," the stamp Extremely Fine, A Choice & Very Rare piece signed "Dietz," "Ashbrook," Ex-Emerson, Brooks (Photo) 1,200.00



- 643 **Memphis, Tenn. 2c Blue (56X1).** Large margins all around, neatly tied by town pmk. on March 1862 Drop Letter, an Insurance Co. notice, Very Fine, Some very minor wrinkles show, from the very thin paper, A singularly choice example of a wonderful rarity (Photo) 1,500.00
- 644 **Memphis, Tenn., 5c Rose (56X3).** Clear to Large margins, tied on 5c Red on Orange Provisional Entire (56XU3) by Jun. 20 town pmk. to Havana, Ala., forwarded to "Nicholson's Store, Choctaw Co.," (Ala.) Blue "Havana, Ala." & "Paid 5" for forwarding., forwarder indicates "Via Mobile & Ohio R.R." in same ink as forwarding address. A wonderful combination in beautiful condition. A Marvelous, Spectacular Cover, probably unique, Ex-Emerson (Photo) E. XIV

LOTS ON VIEW FROM OCTOBER 12th, 1972
OFFICES OPEN SATURDAY BEFORE SALE



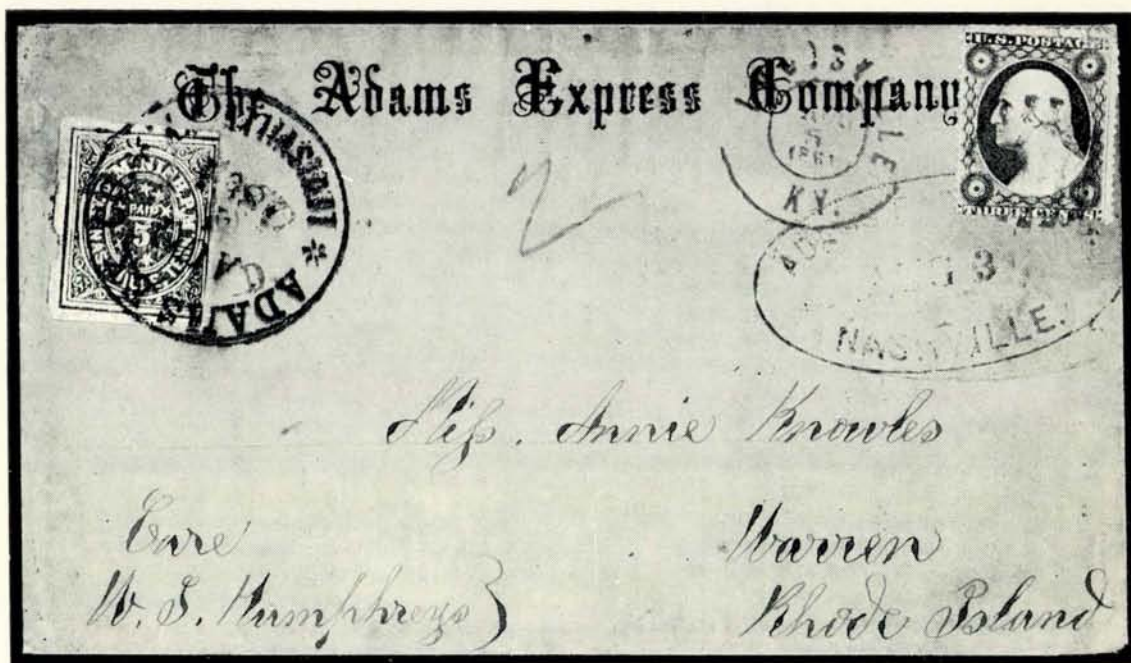
Capt. D. S. Holland.
Mobile
Ala.

- 645 ☒ **Mobile, Ala., 2c Black (58X1).** Three large margins, incl. Top sheet margin, Irregular left margin, clear except one small point, tiny fault, Tied by Bold Double circle pmk. on **Drop Letter** to a Captain, Choice example of this rare stamp on a neat cover (Photo) 1,000.00
- 646 ☒ **Mobile, Ala., 5c Blue (58X2).** Large margins, perfectly tied by town pmk. on small, embossed Ladys' envelope, bit of wear at extreme L. B. corner, Extremely Fine (Photo) 125.00
- 647 ☒ **Mobile, Ala., 5c Blue (58X2). Horiz. Pair,** Margins all around, Beautifully tied by Double circle pmk. on cover to Tally Ho, N. C., Blue embossed shield corner card, Very Fine (Photo) 350.00
- 648 ★ **Nashville, Tenn., 5c Brick Red (61X3).** Unused, Fresh, Large margins except partly touched extreme T. L. corner, otherwise Very Fine (Photo) 275.00
- 649 **Nashville, Tenn., 5c Carmine (61X2).** Large margins to trifle in, clear Blue Express Co. cancel., Fine & attractive (Photo) 100.00+

BIDDING INTERVALS

Bids are executed on a basis of the table of intervals or jumps listed below. Bids which do not conform to this table will be automatically reduced to the appropriate figure. For example a bid of \$15.25 will be entered as a bid of \$15.00.

UP TO	BID JUMPS
\$ 10.00	\$.50
30.00	1.00
75.00	2.50
150.00	5.00
300.00	10.00
750.00	25.00
2,000.00	50.00
3,000.00	100.00
5,000.00	200.00
10,000.00	250.00
20,000.00	500.00



- 650 Nashville, Tenn., 5c Carmine (61X2). Large margins to trifle in at R. on Adam Express Co. Imprinted cover to Warren, R. I. The provisional is tied by Bold "Adams Ex. Co., Louisville, Ky. Aug. 4, 1861," used with 3c Red (26) Tied by Blue oval Adams Express Co., Nashville & "Louisville, Ky. Aug. 5, 1861" & grid. Very Choice cover of utmost rarity (Photo) E. XIV
- 651 Nashville, Tenn., 5c Claret (61X2b). Three large margins, L. frame line touched, Tied by Blue "Nashville, Ten." pmk., matching "Paid" on fresh cover to Athens, Tenn., Very Choice cover, Ex-Emerson (Photo) 350.00+
- 652 Nashville, Tenn., 10c Green (61X6). Clear to large margins, part of Express Co. cancel, light creases, Very Fine appearance (Photo) 800.00+

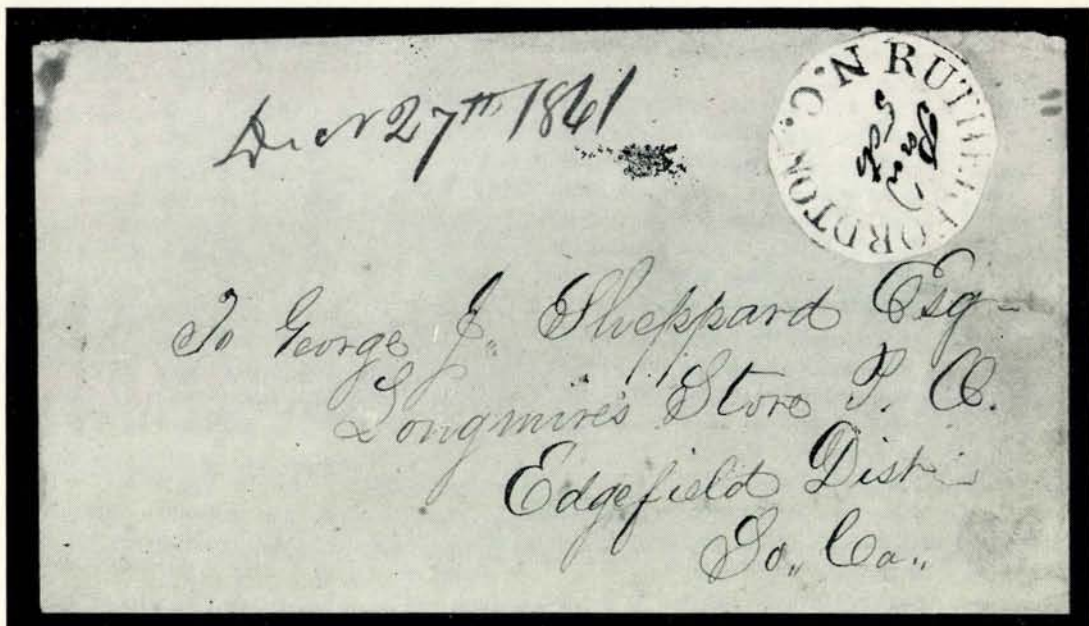
NEW ORLEANS, LA.

- 653 ★ New Orleans, La., 2c Red (62X2). Block, Fresh color, Large margins, Very Fine, Scarce in block, unpriced (Photo) E. IX
- 654 New Orleans, La., 2c Red (62X2). Large margins, Brilliant Color, tied by "New Orleans" pmk. on front only of fresh, neat Drop Letter, Very Fine, Extremely Rare, Ex-Shenfield (Photo) E. XIII
- 655 New Orleans, La., 2c Blue (62X1). Horiz. Strip of Three, Two large margins, narrow at top & trifle in at R., neat town pmk., thin spots, Fine appearance, Very Scarce, possible use in 1c overpayment of 5c rate (Photo) E. X
- 656 New Orleans, La., 2c Blue (62X1). Large margins, incl. part L. sheet margin to upper right frame line just touched; Nicely tied on Feb. 1862 prices current to Memphis, Tenn., Gorgeous cover, with content of great historic interest showing effect of war on N.O. shipping. Outstanding Postal History piece, Ex-Caspary (Photo) 750.00
- 657 New Orleans, La., 5c Brown (62X3). Horiz. Pair, Large margins except barely touched at bottom of left stamp, Tied by "Paid" "New Orleans, La." pmk. paying double rate for over 500 miles, unusual address to "Hotel, Bertie Co., N. C.", Flap mended, closing small tear, Very Fine & Scarce (Photo) 190.00+

- 658 ☒ **New Orleans, La., 5c Ochre (62X3b).** Distinctive color, Large margins to barely touched at right, Tied by town pmk. on neat cover to Laurel Hill, La., Fine (Photo) 300.00
- 659 ☒ **New Orleans, La., 5c Brown on Blue (62X4).** Three incredibly huge margins, large at bottom, probably from T. L. corner, tied by town pmk. on Nov. 1861 protest notice, Extremely Fine (Photo) 75.00
- 660 ☒ **New Orleans, La., 5c Brown on Blue (62X4).** Three huge margins showing part top inscription, barely touched at L. B. corner, Tied by Bold "Pd. 5 cts, N.O.P.O.", "New Orleans, La., Nov. 7, 1861" in double circle & Bold "J. L. Riddell, P.M." in str. line to Providence, La. Wonderfully Fine example of this rare postmark (Photo) E. XIII
- 661 ☒ **New Orleans, La., 5c Brown on Blue (62X4). Strip of Three & Single,** All with three huge margins, cut just to design at bottom, all tied by neat town pmk. on double weight, long distance cover to Charleston, S. C., A marvelous & Very Rare usage, Ex-Seybold (Photo) E. XII
- 662 ☒ **New Orleans, La., 5c Brown on Yellowish (62X5).** Large margins all around, perfectly tied by town pmk. on small neat cover to Fayette, Miss., Extremely Fine & Scarce, Ex-Emerson (Photo) 110.00
- 663 ☒ **Oxford, N. C., 5c Black on White (64XU1).** Clearly impressed at T. R. corner of Home-made envelope, made from part of a school notice, Clear pmk. to Louisburg, N. C., Very Fine, Cannot be affirmed as a provisional in this usage, yet Handsome & Rare (Photo) E. VII
- 664 ☒ **Oxford, N. C., 10c Black on White (64XU2).** Clearly imprinted at T. R., A Very Fine 20c Green (13) Large margins & deep color, affixed over the provisional marking & both tied by light, clear "Oxford, N. C." pmk. on tiny envelope to an officer at "General Hospital, Salisbury N. C." a C. S. A. Prison, A marvelous & rare cover, Ex-Stephen Brown, Shenfield (Photo) E. XII
- 665 ☒ **Petersburg, Va., 5c Red (65X1).** Large margins virtually all around, two ornaments touched T. L., nicely tied by Blue town pmk. on cover to Hillsboro, N. C., Blue oval corner card of merchant, Very Fine (Photo) 250.00
- 666 **Pleasant Shade, Va., 5c Blue (67X1).** Large to huge margins virtually all around, tied on small piece by Blue town pmk., perfect strike, barest trace of toning, still Very Fine & Handsome, Ex-Caspary (Photo) 1,000.00
- 667 ☒ **Raleigh, N. C., 5c Red on White (68XU1).** Light, clear impression on Patriotic Cover, 12-Star Flag (Dietz Ty. B-76), a small, Blue-lined envelope to Catawba Springs, N. C., without flap, Fine (Photo) 700.00
- 668 ☒ **Raleigh, N. C., 5c Red on Orange (68XU3).** Fairly clear impression on cover to Salem, N. C., the "5" deleted in ink, the cover with a regular issue 5c Olive Green (1c) small abrasions, tied by Red Grid, Blue "Raleigh, Dec. 14, 1861" pmk. With stamps on hand, the P. M. used up his provisional envelopes in this manner, Choice cover, "Gen." Weatherly says "unique" E. XI

LOTS ON VIEW FROM OCTOBER 12th, 1972

OFFICES OPEN SATURDAY BEFORE SALE



- 669 **Rutherfordton, N. C., 5c Black, Circular cut (72X1).** On cover to Longmire's Store P. O., S. C., ms. Dec'r. 27th, 1861" postmark, faint pre-impression fold in stamp. Choice example of one of the rarest provisionals, probably unique (and considered by some to be actually so) An extraordinary rarity, Ex-Stephen Brown, Caspary **(Photo)** 4,000.00
- 670 **Rutherfordton, N. C.,** Two covers demonstrating use of the Provisional handstamp as a canceller, one with uncanceled 5c Green (1); other with 5c Blue (4) both stamps used to seal backs of envelope & the #4 broken in two at opening. Each cover bears a "Paid 5" on the face. Covers opened to show both sides, Interesting collateral pieces **E. III**

SMITHFIELD, VA. POSTMASTER'S PROVISIONAL

The following four covers are from an original find, all addressed to members of the same family. According to "Gen." Weatherly, a quantity of these covers were purchased early in the war. They had been prepared in advance and when used the Postmaster applied the proper markings or stamps. The last cover in the series is an ordinary use of the 5c Blue with the Smithfield postmark.

- 671 **Smithfield, Va. 5c Black ms. on Orange (unlisted).** When used, the P. M. applied the Red "Smithfield, Va." pmk., "Paid" & "V" in circle, on neat cover to Rockingham, N. C., Very Fine **(Photo)** —
- 672 **Smithfield, Va., 5c Black ms. on Orange (unlisted).** Another, similar usage to preceding lot, Light postal markings, Very Fine —
- 673 **Smithfield, Va., 5c Black ms. on Orange (Unlisted).** A 5c Olive Green, St. A. affixed over the "Paid 5" & tied by Red "Smithfield, Va." pmk., ending provisional status, Cover restored, stamp bit cut into; of special interest to validate the two preceding lots **(Photo)** —
- 674 **Smithfield, Va.** Fairly clear **Orange** pmk. ties 5c Blue, St. 2 (4a) Large margins to barely touched, Fine, of special interest as showing the Orange pmk. and of same family Correspondence as preceding lots **E. IV**



662

Nov 7. 9.



J. L. RIDDELL, P.M.

660



with
Attention,
We will
accommodate the
The Spring Term
Monday in July of each
year. Terms, accompanied
M. Principal



663



661

Miss Ellen King

664



*Send check letter
to post office*



665



*W. Graham
Wellsboro.
N.C.*



667

*Wm. S. Dufford
Catawba*

673



671

Mrs. Sarah Martin

*PAID 50c
Capt. Charles Watlock
Reidsville*

PAID 10

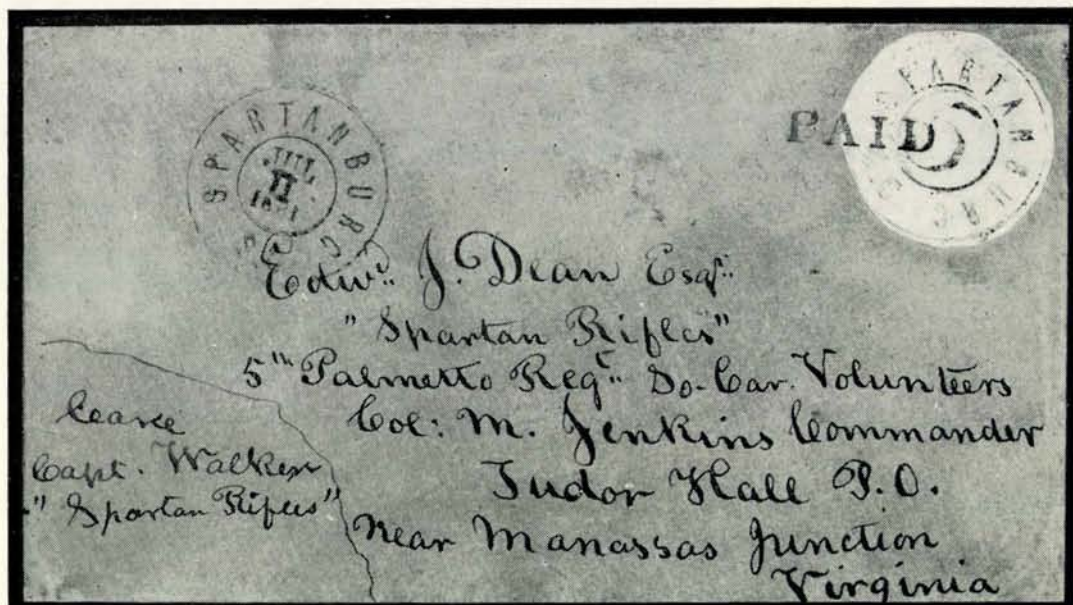
680



677

*Mrs. G. L. Nymre
Hollow Square
Ala*

*J. Colvert Esq
Eagle Hill,
N.C.*



- 675 ☒ **Spartanburg, S. C. 5c Black on White, Blue Ruled Lines (78X1a).** Cut round, with wide margins, perfectly tied by "Paid" & Clear town pmk. Jul. 11, 1861; Interesting military address in care of "Capt. Walker" Spartan Rifles, Tudor Hall, P. O., Va., negligible restoration to cover, Exceptionally Fine, Ex-Emerson, Brooks (Photo) 1,250.00
- 676 ☒ **Spartanburg, S. C., Jul. 20, 1861,** Clear double circle, "Paid" & "5" in circle on neat cover with similar military address as the adhesive provisional (Corp. Dean correspondence) Fine E. IV
- 677 ☒ **Statesville, N. C., 5c Black on Amber (79XU4).** Well impressed in T. R. corner, Clear pmk., neat cover to Eagle Mills, N. C. negligible flaws in cover, Very Fine (Photo) 100.00
- 678 ☒ **Statesville, N. C., 5c Black on Straw (79XU3).** Unused Entire, Very Fine 35.00
- 679 ★ **Tellico Plains, Tenns., 5c, 10c Red (81X1, 81X2).** Horiz. Strip of Three, comprising two 5c & one 10c stamp, Margins nearly all around, barely touched in couple of places, Fresh, o. g., tiny thin specks & very slight soiling of one, Fine, Very Rare (Photo) 1,100.00

HANDSTAMP "PAID" COVERS

ARRANGED ALPHABETICALLY BY TOWN NAME

- 680 ☒ **Chapel Hill, Tex.** Light, Barely readable strike, Clear "Paid" & "10" in circle on 3c Star Die Entire (U27) to "Hollow Square, Ala." Very Scarce & attractive (Photo) E. VII
- 681 ☒ **Charleston, S. C., Nov. 4, 1861, Paid,** In circle, Clear "Paid 2" in circle on local Drop Letter with Military O. B. Imprint of "Head Quarters, Department of So. Ca., Ga., and Fla." a large cover with sides folded over to permit mounting as a regular size envelope, Very Fine, Very Rare usage (Photo) E. X
- 682 ☒ **Chattanooga, Ten., Jul. 8, 1861.** Clear circle, Bold "Paid 5" in circle, unusual type, on cover to Kingston, Tenn., minor restoration to extreme right edge of the cover, otherwise Very Fine, Very Rare, used during the short period of Tennessee Independent Statehood, Ex-Ferrari (Photo) E. VII

CONFEDERATE STATES.
Head Quarters, Department of So. Ca., Ga. and Fla.
OFFICIAL BUSINESS.



681

Chas Vanderhorst Esq



682

Mr. W. S. McCraw



683

PAID 10

John L. G. Smith

*Secretary
S. C.*



684

Paid 5
PAID 5 CENTS

Thos Carroll, Hay, S. C.



689

PAID 5

O. B. Chang
Change Box No. 19
PAID 10

685

D. Masters Office
Lynchburg, Va.



688

PAID 10

W. H. H. H. H. H.



687

Box 46

PAID 5



693



692



Mr. R. A. P.
care McWilliam



697



696



698



699



700

Mr. Wm. J. Drisley
Omecsville
Thomas County
Georgia



694



Capt Alexander M. Davis
Co. G. 15th Va Regt
care Lieut Col. W. & Peter
Parishburg - New Dublin Depot

- 683 ☒ **Livingston, Ala.**, Neat circle, Bold "Paid" & "10" on small mourning envelope to Greensboro, N. C., missent to Greensborough, Ala. with Bold Forwarding postmark, part of flap torn, tragic 1862 letter enclosed, also black-bordered, minor cover tears, Very Fine (Photo) E. IV
- 684 ☒ **Lake Village, Ark.**, Bold circle, perfect strike, matching "Paid, 5 Cents" Two lines on fresh cover to New Orleans, Very Fine, Rare & Unbelievably Beautiful (Photo) E. X
- 685 ☒ **Lynchburg, Va.** Bold Blue circle, matching "Paid 10" two lines, ms. "O. B." Qt. Master's Office, Lynchburg, Va., Military address to Richmond, Va., Very Fine (Photo) E. V
- 686 ☒ **Monterey, Va.** Light, clear circle, "Paid 5" in circle to Emory, Va. (Another Nye cover) July 20, 1861 letter enclosed, minor aging, Fine E. III
- 687 ☒ **Mount Lebanon, La.** Bold circle, old "Union" "Paid 3" in circle altered to a "5", Gorgeous strikes on Feb. 1862 envelope to New Orleans, Extremely Fine & Scarce (Photo) E. VII
- 688 ☒ **Natchez, Miss., Jul. 9, 1862**, Clear circle, Bold "Paid" & "10" on tiny Blue envelope to Louisiana, without flap, Very Fine (Photo) E. V
- 689 ☒ **Pensacola, Fla.** Clear circle with slug below date, "Paid" in circle & "5" on fresh, small cover to Marion, Ala., Very Fine (Photo) E. VII
- 690 ☒ **Richmond, Va. Aug. 27, 1861**, Clear circle, Bold "Paid" penciled "2" on official printed circular of Adj. Gen'l. Office, to Rural Retreat, Va., ms. "Chge. Adj. Gen'l. Office," & Initials. Interesting content about privately owned guns, etc. required by the military. Very Fine, Rare usage. Great Postal History interest E. V
- 691 ☒ **Richmond, Va., Nov. 28, 1861**, Bold Circle, "Paid 2" In Italic Caps. on Military Circular to Rural Retreat, Va. Charge to A. G. office indicated at T. R. Contents relate to records of military personnel. Very Fine, the handstamp Very Scarce E. VII
- 692 ☒ **Rome, Ga.** Partly clear strike, Bold "Paid" & Bold "5" in wood-cut ovoid frame, Interesting July 1861 folded letter to Fort Defiance, N. C., Choice cover (Photo) E. V

GENERAL ISSUES ON COVER

- 693 ☒ **5c Green, St. 2 (1)**. Large margins, incl. T. Sheet margin, Pos. 1, St. 2, Beautifully tied by "Atlanta, Ga., Feb. 6, 1862" on neat yellow cover to Griffin, Ga., Fancy Green Embossed corner card, Very Fine, Gorgeous & Colorful (Photo) E. VI
- 694 ☒ **5c Green, St. 1 (1)**. Margins to touched, tied by "Abington, Va." pmk., Cover with Blue illustrated oval of **Emory & Henry College** Military address to Parisburg (Va.) via Dublin Depot; Bit reduced at top into small part of college oval, Fine, Ex-Antrim (Photo) E. VIII
- 695 ☒ **5c Green, Pos. 21 St. 2 (1)**. "Spur" variety, Large margins, tied by light Blue "Newbern, N. C." pmk. on small cover to Greensboro, N. C., Very slight toning, otherwise Very Fine E. III
- 696 ☒ **5c Green, St. 2 (1)**. Large margins to barely touched at lower left. Tied by "Wilmington, N. C. 5, Paid" the "5" made by altering the "3" of the old Union canceller, neat brown war-time envelope to Smithfield, N. C., Very Choice cover (Photo) E. IV
- 697 ☒ **5c Green, St. 1 (1). Vertical Pair**, Bottom stamp with **Part Imprint**, Irregular margins, mostly large, touched in couple of spots & top stamp sealed tear, tied by "Tudor Hall, Va., Nov. 1861" pmk. on small embossed Ladys' envelope to Greensboro, Ala., some soiling, Very attractive & Rare (Photo) E. IX

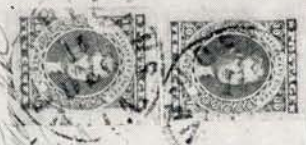
703



*Mrs. J. Nesbitt
C. S. Brown
Mo...*

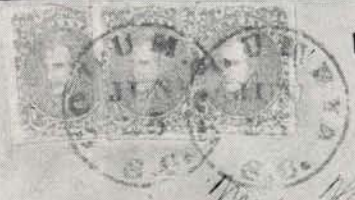
ARTHUR SAUCIER,
THIRD J. P.,
For the Parish of Orleans.

702



To the Clerk of the Hon: Judicial District
in and for the Parish of

706



Mrs. Nesbitt

Confederate States of America,
OFFICE OF ORDERS AND DETAIL,
NAVY DEPARTMENT.

705



Gen. A. M. ...

708

Harris & Pro



704

*Garth & Co
Eagle Mills*

THE LARD AND
of the No
Company.
above
Road
P
ices for
THE LARD AND

711

Mrs. Betty P. Harris



709



Lieut. ...

710



712

Mrs. C. B. Bennett



714



713

Gen. ...



717

HILLSBOROUGH, N. C.
Military Academy.
W. A. ...



718

THE PROPERTY OF
...



- 698 ☒ **5c Green, St. 1 (1). Two Horiz. Pairs**, Large margins to touched, each tied by "Augusta, Ga." in light Double circle on cover to Hon. Alexander H. Stephens, Richmond, Va." (V. P. of C. S. A.). Back of cover written over with Stephen's disposition of the matter involved, An Extremely Choice & Handsome cover, Very Scarce Combination (Photo) **E. IX**
- 699 ☒ **10c Blue, Hoyer (2)**. Huge margins, incl. T. Sheet margin, tied by light "Tudor Hall, Va." pmk. Nov. 1861 date, day not legible; From the earliest printing and used within first few days after issue, small flaw in cover, Stamp Extremely Fine (Photo) 40.00+
- 700 ☒ **10c Blue, Paterson (2)**. Large margins incl. enormous bottom sheet margin with **part Paterson Imprint**, Tied by "Savannah, Ga., Paid" on fresh, small cover to Duncanville, Ga., Extremely Fine & Rare (Photo) **E. IX**
- 701 ☒ **10c Blue, Paterson (2)**. Large margins to barely touched at right, Tied by "Raleigh, N. C." Blue Double circle on Brown envelope to Oaks, N. C., **A Turned Cover**, second use with 10c Blue, Paterson (2) L. Sheet margin, trifle in T. & R., tied by "Oaks, N. C." to Lenoir, N. C. "Gen." Weatherly classes as a school cover since the "Oaks" P. O. was located in the Bingham School there, Fine & Rare **E. VI**
- 702 ☒ **10c Deep Blue, Hoyer (2b)**. Two singles, both with incredible huge margins, one with var. "Dot in left Star"; other the "**Crescent Flaw**" (Dietz Fig. 5) which has such enormous margins it must be a T. R. corner position since it shows bit of next lower stamp. Neat Court House cover, slightly reduced, Two marvelous stamps (Photo) **E. VIII**
- 703 ☒ **2c Green (3)**. Clear to Large margins, Tied by "Richmond, Va. Nov. 1, 1862" on Oct. 22, 1862 Dept. of Justice printed circular to Macon, Ga., Very Fine, Outstanding example of this scarce circular usage (Photo) 450.00
- 704 ☒ **2c Green (2)**. Three large margins, just clear at left, Tied by "Salisbury, N. C." on large (8½ x 12½") Broadside ad. of the Purchasing Agent of the North Carolina R.R., Fine, A Spectacular Piece (Photo) 450.00+
- 705 ☒ **2c Dark Green (3)**. Margins to trifle cut in, Tied by Bold "Richmond, Va., Aug. 4, 1862" on **official Imprinted cover of C. S. A. Navy Department**, Choice local Drop Letter, "Gen." Weatherly notes this use on Navy Dep't cover is unique (Photo) **E. XIII**
- 706 ☒ **2c Green (3). Three singles**, Each slightly cut into, slightly overlapped & tied Blue "Columbia, S. C." on cover to Abbeville C. H., S. C. overpayment of 5c rate, the overlap covers the place where cut in, (except at top of left stamp) so it is of beautiful appearance. Very Rare usage (Photo) **E. XIII**

A REMINDER

Mails are often slow. After nearly every auction we receive some 25 to 50 late bid sheets, many of which would have been successful. We can only repeat . . . **PLEASE MAIL YOUR BIDS EARLY!** Use Air Mail if you are in doubt as to being on time.



- 707 ☒ **2c Green (3). Horiz. Pair & Strip of Three**, paying 10c rate, Gainesville to Lawrenceville, Ga., **All stamps with large margins & nicely tied by town pmk.**, Careful examination discloses a couple of insignificant creases, nevertheless a Wonderfully Fine cover and a beautiful example of this rare usage **(Photo)** E. XIV
- 708 ☒ **5c Light Milky Blue, St. 3 (4b)**. Large margins, tied by neat Blue Grid, "Raleigh, N.C." Blue Double circle pmk. on neat home-made cover, made from Blue legal form to Oxford, N.C. June 1862 usage, Very Fine, despite minuscule toning spot **(Photo)** E. IV
- 709 ☒ **5c Light Milky Blue, St. 3 (4b). Horiz. Pair**, Large margins, minor toning at top, Tied by neat Blue "Greensborough, N.C." pmk. on cover with military address to Chester Depot, Va., Very Fine **(Photo)** E. VI
- 710 ☒ **10c Rose (5)**. Pretty Pinkish Shade, Large margins all around, perfectly tied by Bold "Richmond, Va., Jul. 6. 1862" pmk. on neat cover to Coles Ferry, Va., Extremely Fine **(Photo)** 125.00
- 711 ☒ **10c Rose (5)**. Large margins, Fine color, Tied by unfinished Richmond, Va. Jan. 3, 1863" canceller with a heavy letter (T?) on each side of the small "VA". Part of a letter from August Dietz accompanies in which he explains how this could occur (and probably did) Prominent Plate var. under left "10" Very Fine, A marvelous specialists piece, Ex-Dietz, possibly unique **(Photo)** E. IX
- 712 ☒ **10c Carmine (5a)**. Rich color, Irregular margins, mostly large but just touched couple of places, Tied by "Chattanooga, Ten." pmk. on home-made cover, made from printed form., With Knapp original plating note "Pos. 30", used to Buttahatchie, Miss., Fine **(Photo)** 275.00+
- 713 ☒ **10c Deep Carmine (5a)**. Gorgeous, Deep Color, Huge margins, tied by light "Knoxville, Tenn." pmk. on neat brown war-time envelope to Kingston, Tenn., Indescribably magnificent, Ex-Antrim, Shenfield, note on back reads "Deepest color I ever saw. Finest copy known, L. L. S.(henfield)" What more can be said? **(Photo)** E. XIII

- 714 ☒ **5c Blue, London Print (6).** Large margins, Plate flaw shows near face, Tied by clear "Salisbury, N. C., Jun. 10, 1861". An obvious 1862 use yet a fine example of continued use of old year date logo, which was continued in a few towns, Very Fine, Unusually interesting (Photo) E. IV
- 715 ☒ **5c Blue, London Print (6). Horiz. Pair,** Margins all around, mostly huge, Tied by Bold "Charleston, S. C., Aug 25, 186" to **Brig. Gen'l J. J. Pettigrew,** Richmond, Va., forwarded to Petersburg. Bold "Richmond, Va., Aug. 27, 1862" pmk. & "Forwarded" in long str. line, Very Fine, Rare usage (Photo) E. VII
- 716 ☒ **5c Blue, Local Print (7). Horiz. Pair,** Margins nearly all around tied by partial "Charleston, S. C." pmk. on Brown war-time envelope to **Brig. Gen'l. J. Johnston Pettigrew, Goldsboro, N. C.,** also "Official Business" docketed "Gen. Beaugard" and declared to have been written by Gen. P. G. T. Beaugard, in his recognizable distinctive style (Photo) E. VIII
- 717 ☒ **5c Blue, London Print (6). Vertical Pair,** Large margins all around and Extremely Fine, Tied by perfect, Bold "Hillsboro, N. C., Aug. 9, 1862" in Blue on cover to Turkey Cove, N. C. Pictorial Corner card. of Hillsborough Military Academy, Trifle reduced at Left. Very Choice. Rare school cover, Ex-Emerson (Photo) E. VIII
- 718 ☒ **5c Blue, London Print (6) Horiz. Pair,** Large margins to just touched at B., Tied by Bold Grids on **Spectacular Home-made cover,** the inside of an ornate, pictorial school book cover, "Mt. Airy, N. C." ms. pmk., A choice "Conservation Piece" Fine (Photo) E. V
- 719 ☒ **5c Blue, Local Print (7). Horiz. Pair,** margins nearly all around, beautifully tied by three "Raleigh, N. C." Double circles in Blue on neat cover to Hon. Thos. Ruffin, Graham, N. C., Very Fine, Ex-Walcott E. II
- 720 ☒ **5c Blue, Local Print (7). Horiz. Pair,** Large margins virtually all around, tied by "Raleigh, N. C." Double Circle on Cover Imprinted "State of North Carolina, Executive Dept." to Capt. W. A. Lenoir, Forks of Pigeon, N. C., Docketed "Gov. Vance", Very Fine (Photo) E. VI
- 721 ☒ **2c Red Brown (8).** Large margins, incl. L. Sheet margin, irregular at R., just touching at one point, Well tied by "Savannah, Ga." pmk. on 1864 printed circular to Columbus, Ga., Very Fine & Rare cover (Photo) 150.00
- 722 ☒ **2c Red Brown (8).** Large margins, just tied by **Blue Target** on long home-made newspaper wrapper to Huntsville, N. C. Cover later used for a lot of figuring but folds to a nice appearance, Very Fine, Rare usage & cancel (Photo) E. VIII
- 723 ☒ **2c Red Brown (8).** Large margins to slightly in upper right, tied by "Raleigh, N. C." Double circle on Semi-Official cover Imprinted "**Quartermaster's Office, C. S. A. Raleigh, N. C.**" Addressed to Camp Holmes, Raleigh, N. C. & treated as prepaid Drop Letter, Choice cover, Rare usage (Photo) E. VIII
- 724 ☒ **2c Red Brown (8). Horiz. Pair, Vertical Pair & Single,** making up the 10c rate, the Horiz. Pair with large margins, slight toning, The Vertical Pair with lower stamp slightly cut in, the single, margins except touched at bottom, all tied by "Raleigh, N. C." Double circle on **Turned Cover** to Salisbury, N. C. First use out of the mail, to **Lt. Gen'l. Holmes, Raleigh, N. C.,** Cover neatly reduced & refolded for its second use. A Spectacular & Matchless C. S. A. Postal History Rarity (Photo) E. XII
- 725 ☒ **2c Red Brown (8). Vertical Strip of Five,** Margins nearly all around, the top stamp trifle in, tied by neat ms. cancel on **Wall Paper Cover,** Red, Green & Gray pattern, to Augusta, Ga., forwarded to Albany, Ga. & again to Newton, Ga., Flap sealed by a 10c Blue (11) tied by partial "Augusta" & clear "Albany, Ga." pmks. Cover opened to show both sides as well as Wall Paper design, Ink of address has eaten through in spots, nevertheless an Exciting & Fabulous Cover, which, in all probability is unique (Photo) E. XIII

CHRONOLOGICAL FORWARDED
AUG 25 86
WARRINGTON
715
Maj. Genl. J. J. Pettigrew

Special Business
716
Brig Genl J. J. Pettigrew

State of North Carolina
EXECUTIVE DEPARTMENT.
720
Capt. W. A.

722
u. n. b.

721

OFFICIAL BUSINESS.
Quartermaster's Office U. S. A.
RALEIGH, N. C.
723
Francis M. Johnson

724
Mrs. John W. ...

725
Anton
Baker County,

726
P. D. ...

727
WILMINGTON
1
Hon. T. L. S. M. ...

737
Josiah Shepperson Esq

733
OCT 20

735
DUE
B. P. ...

736
Mrs Nancy J. Noble
George Town

734
Ga
Mrs Mary E. Douglas
Christiansburg
Montgomery County
Virginia

- 726 ☒ **10c Gray Blue, T-E-N (9b).** Exceptional color, Large margins except irregularly close at Top, Tied by neat "Marietta, Ga." pmk. on cover to Griffin, Ga., slight abrasion at bottom, Very Fine appearance (Photo) 180.00
- 727 ☒ **10c Light Blue, "T-E-N" (9).** Huge margins, Broad (1mm) pre-printing fold, opened out before put on the neat cover, Wilmington to Elizabeth, N. C., Clear pmk., Part of flap torn, Very Fine, Striking, Obviously Very Rare (Photo) **E. IX**
- 728 ☒ **10c Bright Blue, T-E-N (9). Horiz. Pair,** Incredible Bright Color, Ample to Large margins, Tied by "Richmond, Va." town pmk. on cover (part of flap torn) with curious military address "Capt. Powhatan Ellis, fr. A. A. G., Hd. Qrs. Gen. S. Lee's Division, Meridian, Miss. Tiny scissors cut in margin should be overlooked, A fantastically attractive cover, signed "Ashbrook" & with note "The finest pair yet known, L. L. S.(henfield)" (Photo) 600.00
- 729 ☒ **10c Milky Blue, Frame Line (10).** Complete lines Top & Right, part of bottom line, wide margin at left, Well tied by clear "**Richmond, Va. Apr. 19, 1863**" The earliest known date of use. Light military address to Chaplain of 11th Va. Reg't., Negligible age toning, Wonderfully Fine and one of the most important C. S. A. covers in existence (Photo) **E. XV**
- 730 ☒ **10c Light Blue, Frame Line (10).** Pos. 30, with full, wide (18 mm) sheet margin at R., Complete lines L. & R., wide margins T. & B. tied by "Mobile, Ala." double circle to Bowling Green, Va., small tear in cover, A Marvelous stamp, An attractive cover, one of the most outstanding "Frame Line" covers known, Ex-Dietz (Photo) **E. XIII**
- 731 ☒ **10c Blue, Frame Line (10).** Three complete frame lines & nearly all (80%) of the fourth, Tied by "Mobile, Ala." double circle on Brown war-time envelope to Shubuta, Miss. A Turned Cover, second use with "Shoobota, Miss." pmk. & "**Paid 10**" in fancy dotted box, An incredibly Fine stamp in a startling & spectacular use. One of the greatest "Frame Line" covers in existence (Photo) **E. XIV**
- 732 ☒ **10c Blue, Frame Line (10). Horiz. Pair,** Left stamp three complete frame lines, R. stamp two complete lines, Tied by "**Sumter, S. C., Jul. 3, 1861**" on brown home-made envelope to Darlington, S. C. with enclosure on fancy stationery, Knife cut shows along frame line, an apparent effort to facilitate separation at the line itself, Very Fine & Rare pair, the Sumter usage very rare (Photo) 1,200.00
- 733 ☒ **10c Dark Blue (11).** Beautiful color & Impression, Margins all around, Tied by Bold, Clear "**Paid**" & "**10**" enclosed in a hollow "C" all in circle, "Patterson, N. C." pmk., Cover to "Oaks, N. C.". Exceptional example of this rare & unusual cancel, seldom used on adhesive stamps (Photo) **E. IX**
- 734 ☒ **10c Blue (11).** Three huge margins, barely touched at R., Tied by Bold Str. Line "**Goodson**" (Va.) & "**Oct**", neat Brown home-made cover to Christiansburg, Va., Splendid example of this scarce pmk. (Photo) **E. VI**
- 735 ☒ **10c Blue (11).** Large to Huge margins, tied by "Richmond, Va." pmk. to Abington, Va., forwarded to Emory, Va. with Bold Blue Fancy Shield, with "Due" unusual design, not shown in Dietz. Undoubtedly Very Rare being known only from Emory, which was never a large P. O. Cover bit aged, yet choice example (Photo) **E. VII**
- 736 ☒ **10c Blue, Perforated (11d).** Centered to R., tied by "Griffin, Ga." on coarse Brown home-made envelope to Georgetown, Ga., Fine example of this scarce variety (Photo) 100.00
- 737 ☒ **10c Deep Blue, K. & B. Print (12d).** Large margins, Wonderful color tied by "Lynchburg, Va." pmk. in **Bright Brown** on small cover to Campbell C. H., Va., Very Fine & Scarce (Photo) **E. VI**



728

City of Washington D.C. N.Y.



729



730

Mr Jordan Wood



732



731



*James Hayes
Luta
Clark Co
Miss*

No 84

- 738 ☒ **20c Green (13).** Large margins except irregularly close at one point on right, Tied by "**Marshall, Tex.**" on cover to San Antonio, Tex. on cover with large pictorial corner card of wagon maker, least bit reduced extreme left, still Very Fine, Rare usage **E. XI**
- 739 ☒ **20c Green (13).** Large margins, tied by **Red** "Petersburg, Va." pmk. on cover to Salem, Va., Couple of small stains, Very Fine stamp, Handsome & Rare with Red cancel., Ex-Emerson **(Photo) E. XI**
- 740 ☒ **20c Green, Bisect, Bottom Half used for 10c (13d).** Tied by "Shreveport, La." Double circle, but not across the cut, used to San Antonio, Tex., used in March or May 1863, Cover nicks neatly restored, Very Fine appearance **(Photo) 650.00**
- 741 ☒ **20c Green, Bisect, Upper Left Half used on 10c (13c).** Large margins, Tied by "**Selma, Ala.**" on Turned Cover, to Talladega, Ala. Second usage "Talladega" pmk. & "Paid 10" below letters "I E." Initials of Isaac Estell, P. M. at Talladega. A Sensational & Thrilling Rarity in beautiful condition. **(Photo) E. XIII**
- 742 ☒ **1c Orange (14).** Front only of Union Soldier's Letter made from part sheet of the #14. Approximately 60 stamps were needed to make the envelope of which only this front remains. Endorsed "Soldiers Letters" to Indiana. "Old Point Comfort, Va." pmk. & "Due 3" Cover bit wrinkled & with faults, immaterial since it is considered unique **(Photo) E. XIII**

WALL PAPER ENVELOPES

- 743 ☒ **Charleston, S. C.** Bold circle, matching "Paid 10" in circle, on **Wall Paper Cover**, Buff & Lilac Floral Pattern, Very Fine & Handsome **(Photo) E. VIII**
- 744 ☒ **Flat Rock, N. C.**, Clear circle, Bold "Paid" over "10" on **Wall Paper Envelope**, Multicolor floral design on white enamel background, to Wateree, S. C., Very Fine, Scarce **(Photo) E. VIII**
- 745 ☒ **5c Light Milky Blue, St. 3 (4b). Vertical Pair**, Large margins, Tied by Richmond, Va., Jul. 7, 1862" on **Wall Paper Envelope**, Bold Ultramarine & Brown floral design, to Judesville P. O., N. C., without lower back flap, Very Fine & Handsome **(Photo) E. VIII**
- 746 ☒ **5c Blue, Local Print (7). Horiz. Pair**, Margins all around, incl. L. Sheet margin, tied by "Hardeeville, S. C. on **Wall Paper Envelope** Brilliant Blue & Brown Floral pattern, to 5 Mile P. O., S. C. bit of toning in margin of stamps, Very Choice cover **(Photo) E. VIII**
- 747 ☒ **10c Blue (11).** Ample to Large margins, tied by light "Fayetteville, N. C." pmk. on **Wall Paper Envelope**, Red, Green & Gray Geometric pattern, Very Fine **(Photo) E. VIII**
- 748 ☒ **10c Blue (11). Two singles**, Large margins, Tied by Blue "Columbia, S. C." pmk. on small **Wall Paper Cover** Multicolor Floral Pattern on Gray, to Flat Rock, N. C., stamps also tied by bit of address, Very Fine **(Photo) E. VIII**
- 749 ☒ **10c Blue (12).** Three Large margins, narrow at Left., Thin bar grid cancel. & tied by "**Flat Rock, N. C.**" pmk. on **Wall Paper Cover**, Pink & Gray Green Floral pattern; small neat cover to Columbia, S. C., Very Fine **(Photo) E. VIII**
- 750 ☒ **10c Blue (12).** Ample to Large margins, tied by "**Greenville, S. C.**" town pmk. on **Wall Paper Cover**, Pink & Gray Green pattern exactly similar to the preceding lot & from same correspondence. This is the only time we recall seeing the same Wall Paper design cover used from two different towns **(Photo) E. VIII**

740

Henry Rada (S)

739

Mrs E. C. Ashtat

742

Due 3

Mrs Ellen Hunt
Carmichael
Parselle County
Indiana

741

PAID 10

743

CHARLES TON
NOV 10
1862

Mrs Emily S. Cobble
Care of Mrs Mansfield
Columbia

744

PAID 10

Winters

746

OHIO MOND
JUL 10
1862
V2

745

Nathan
Indestville po
Savz county
N.C.

747

Southampton
just
The people C.
L. C.

749

Middletown
Columbia
S. Carolina

748

Mrs M. Shaver
Savannah
Anderson County
North Carolina

750

Middletown
Savannah
Columbia
South Carolina


PATRIOTIC COVERS


- 751 ☒ **Charleston, S. C., Feb. 15, 1861**, Bold double circle on 3c Star Die Entire (U26) **Confederate States usage and a Confederate Patriotic Cover** Blue "Palmetto Flag" (Dietz, D-SC-1) Inscribed **"The Mercury."** Charleston, S. C." to Pittsburg, Penn. Used while mails still legally crossed the lines. A magnificent rarity, An Exhibition Showpiece, Ex-Brown (Photo) **E. XII**
- 752 ☒ **Greensborough, N. C.** Blue circle, ms. **"Due 2" on Local Drop Letter.** A Soldier's Letter on Coarse Brown **Patriotic Cover**, Shooting Cannon & 12-Star Flag over Verse "Our father's faith let us keep till death" etc., "Bonitz Imprint (Dietz, Ty. E-A-3) Fine, Extremely Rare, "Gen." Weatherly says "unique as far as known" (Photo) **E. IX**
- 753 ☒ **Guineys, Va.**, Pencil "Due 10" on Soldier's Letter to Greensboro, N. C. A coarse Brown **Patriotic Cover**, Two Colonial Soldiers & Verse starting "Men of the South, Arise, arise", "Bonitz" Imprint, (Dietz Ty. F-B-1) minor cover wear, Fine, Scarce (Photo) **E. VII**
- 754 ☒ **Guineys, Va.** in circle, penciled "Due 10" on Soldier's Letter to Greensboro, N. C., A coarse Brown **Patriotic Cover**, 10-star Flag & Steamer, Verse begins "Stand by that flag", "Bonitz" Imprint (Dietz, Ty-B-44) one corner trifle rounded, Fine, Very Scarce (Photo) **E. VII**
- 755 ☒ **Marion Station, Miss.** Clear circle, Red Crayon "Due 5" on Officer's Letter to Paulding, Miss. with multicolor Confederate Patriotic Label, Soldier nailing 11-Star Flag to Mast (Dietz Ty. J-B-1) Very Fine & Rare cover (Photo) **E. VIII**
- 756 ☒ **Richmond, Va., May 29, 1861** Bold circle ties U. S. 3c Red (26) Perfs. touch, on **Patriotic Cover** 8-Star Small Flag, on small envelope (4¼x2½") to Smithfield, N. C., part of flap missing. Beautiful & Very Choice Example of **Confederate usage of U. S. stamp on a C. S. A. Patriotic** (Photo) **E. VIII**
- 757 ☒ **Richmond, Va. Feb. 16, 1862**, Bold circle, matching "Due 5" on Soldiers' Letter to Mountgilead, N. C. A **Patriotic Cover** Red Portrait of Jeff'n Davis & Flags, Scenic Background in Blue (Dietz Ty. G-A-1R) Very Fine & Fresh, A particularly Gorgeous Patriotic (Photo) **E. XII**
- 758 ☒ **Staunton, Va.**, Clear circle **"Paid" & "5"** on **Patriotic Cover**, 12-Star Flag (Dietz Ty. B-76) June 18, 1861 letter enclosed, bit worn extreme right (letter of James Nye of Emory, Va. to his wife, see Emory covers) Fine (Photo) **E. VI**
- 759 ☒ **Staunton, Va.** Light, clear circle, "Paid" & "5" on **Patriotic Cover**, 12-Star Flag, (Dietz, Ty. B-76) June 8, 1861 letter enclosed, from Nye correspondence (see preceding lot) Bit cut in at left, otherwise Fine **E. IV**
- 760 ☒ **Tudor Hall, Va., Nov. 5** (1861) matching "Paid 5" in arc, Bold strikes on Small (4x2½") **Patriotic Cover**, Ten Star Flag (Dietz, Ty. B-35) with an apparent eleventh star outside the circle, which we believe to be a printing variety, A Patriotic Letter Sheet with similar 10-Star Flag and a flaw, similar to the one on the cover but in a different position, Very Fine, An Extremely unusual & Rare cover (Photo) **E. VIII**
- 761 ☒ **Wilmington, N. C., Paid 5** (the "5" altered from the old Union "3") Bold Strike on Patriotic Cover, Shooting Cannon, 12-Star Flag & Verse (Dietz Ty. E-A-1G) In Red on Yellow to Sherrills Ford. P. O. N. C., Fresh & Very Fine, A Striking Cover (Photo) **E. IX**
- 762 ☒ **5c Green, St. 1 (1).** Large margins, tied by **"Rapidan Station, Va."** on **Patriotic Cover**, Large 12-Star Flag (Dietz Ty. B-77) on cover to Dobson, N. C. Very minor aging, barely affecting stamp, Very Fine & Striking. (Photo) **E. X**
- 763 ☒ **10c Blue, Paterson (2).** Bright color, Huge margins, small tears in left margin, tied by Bold **"Proctor's Creek, Va."** on **Patriotic Cover**, Dragoon on Horseback, with verse starting "To Arms, to arms" etc. (Dietz Ty. F-A-1) Very Fine despite the tiny faults in the stamp (Photo) **E. IX**




Men of the South arise, arise—
Hurl back the invading foe,
The sunny land must—aye—be free
(The blood of thousands flow)

753






751



754


Stand by that flag, men of the South,
Of noble patriot sires,
Your cause is just, you'll safely pass
Through Abolition fires.



Our father's faith let us keep all death,
Their lips in its chancel's altar;
As men who stand for their mother land,
And die, but never surrender.
With the Cannon's flash, with the Cannon's
crash,
With the Cannon's roar and rattle:
Let Freedom's sons, with their glancing
guns

752


Mr. Emmsley
Gullah
Greenberry



755

From Capt. A.S.

Mrs. J. S. ...




758

Mrs. Ann, E. ...
Emory
Washington Co.



757

Stand firmly by your country!
Let your faith and courage rise
Trust in GOD and DAVIS,
But—keep your powder dry!



761

Mr. Levi M. ...
Shenandoah Co. Va.




To arms! to arms! quick, be ready,
Think of what the South has leered
Onward, onward! stout and steady
Drive the vandals to their den,
On, and let the watch-words be
Country, home, and Liberty!

763

PROVIDENCE R.I. FEB 18 1862

Mr. C. ...



764

Mr. ...



762

General ...



760

Miss Mary ...



756

Mr. A. G. ...
Smithfield
Johnston Co.
S. C.

- 764 ☒ **5c Blue, St. 2 (4).** Irregular margins, touching in spots, ms. cancel., not tied, ms. "Clayton, N. C." pmk. on **Patriotic Cover**, Colonial Soldier with musket, Same type as Dietz F-B-1 but one soldier only, with verse starting "Our flag shall proudly stream", Bonitz Imprint, on coarse Brown envelope; This type unlisted in Dietz and called "Unique" by "Gen." Weatherly **(Photo)** **E. X**
- 765 ☒ **5c Blue, London Print (6). Vertical Pair,** Large margins all around, tied by "Goodson, Va." on **Patriotic Cover**, 7-Star Flag, C. S. A. Imprint (Dietz B-17) on cover to Christiansville, Va. Extremely slight reduction at L. just touching flag-staff, still Very Fine **(Photo)** **E. VIII**
- 766 ☒ **5c Blue, Local Print (7). Horiz. Pair,** Clear to large margins, ms. cancel., not tied on coarse Brown **Patriotic Cover**, 10-Star Flag & Streamer, Verse starting "Bright Banner of Freedom", Bonitz Imprint, (Dietz Ty. B-44) 1863 letter enclosed headed "Camp near Brandy Station", Interesting war comment. Small restoration in corner, Fine appearance **(Photo)** **E. V**
- 767 ☒ **5c Blue, Local Print (7). Vertical Pair,** Margins all around, tied on back of very small **Valentine Envelope**, by "Richmond, Va., Feb. 12, 1863" to Mocksville, N. C., **Original Home-Made Valentine enclosed**, with sentimental verse in same handwriting as address. Very Fine, Confederate Valentines & their covers are Very Rare, According to "Gen." Weatherly only about 12 are known **(Photo)** **E. XIII**
- 768 ☒ **10c Milky Blue, "T-E-N" (9a).** Large margins all around, tied by neat "Greenville, N. C." pmk. on **Patriotic Cover**, 10-Star Flag & Streamer Verse starting "Stand By That Flag", Bonitz Imprint. Very minor toning, Very Fine **(Photo)** 450.00+

CAPTURED UNION PATRIOTICS USED IN C. S. A.

- 769 ☒ **Kingston, N. C.** almost illegible circle, "Due 10" in arc on Soldier's Letter, (1st N. C. Battalion Sharpshooters) to Huntsville, N. C. **A Spectacular Union Patriotic Cover** picturing desperate "hand-to-hand" battle, obviously from a captured Union soldier, Without flap, minor mend. Fine & Rare **(Photo)** **E. VII**
- 770 ☒ **5c Blue, Local Print (7). Vertical Pair,** Margins to bit cut in, tied by "Richmond, Va." to Friendship P. O., N. C. **A Union Patriotic Cover**, multicolor, Soldier with musket, Cannon & tents in background, obviously from a captured Union soldier, Trifle reduced at R., minor aging, Fine & Scarce **(Photo)** **E. VI**
- 771 ☒ **5c Blue, Local Print (7). Horiz. Pair,** Margins all around, Tied by "Richmond, Va." on **Union Patriotic Cover**, Rare multicolor Regimental, Soldier Carrying Flag of 51st Reg't, P. V. (Penn. Volunteers) & Verse; Sent to Dawson, Ga., obviously from a captured Union Soldier, Very Fine **(Photo)** **E. IX**
- 772 ☒ **10c Light Blue (11).** Ample to Large margins, tied by "Winchester, Va." pmk. to Hogan's Creek, N. C., An unusual hand-made Patriotic Cover & Enclosure, Sender has cut a panel in the envelope to frame a portrait of Gen. Milroy on a Union pictorial letter sheet. The letter states "This is the Union General we defeated at Winchester," etc. Least bit age toned. Almost certainly unique **(Photo)** **E. VIII**

RAILROAD COVERS

- 773 ☒ **Richmond, Va. Jan. 7, 1863** Bold circle, Bold "Due 10" & "Way" Choice strikes on officer's letter addressed in the care of the Ass't Sect'y of War, the "Way" marking is Very Rare, indicating it was posted en Route, Very Fine **(Photo)** **E. VIII**



765

M
Mr. Edward Keen



772



766

Mr. Thomas Hunt
Friendship



WAY DUE TO

773



768

Miss Catharine



774



769

Miss S. Mear
Capt. C. B. Patton
Sharpshooters

767



775



770

Mr. Thomas



777



779



STEAMBOAT

778



Miss John T. ...

781



Miss Carole Hoy
New York

Don't
L.H.H. ...



771

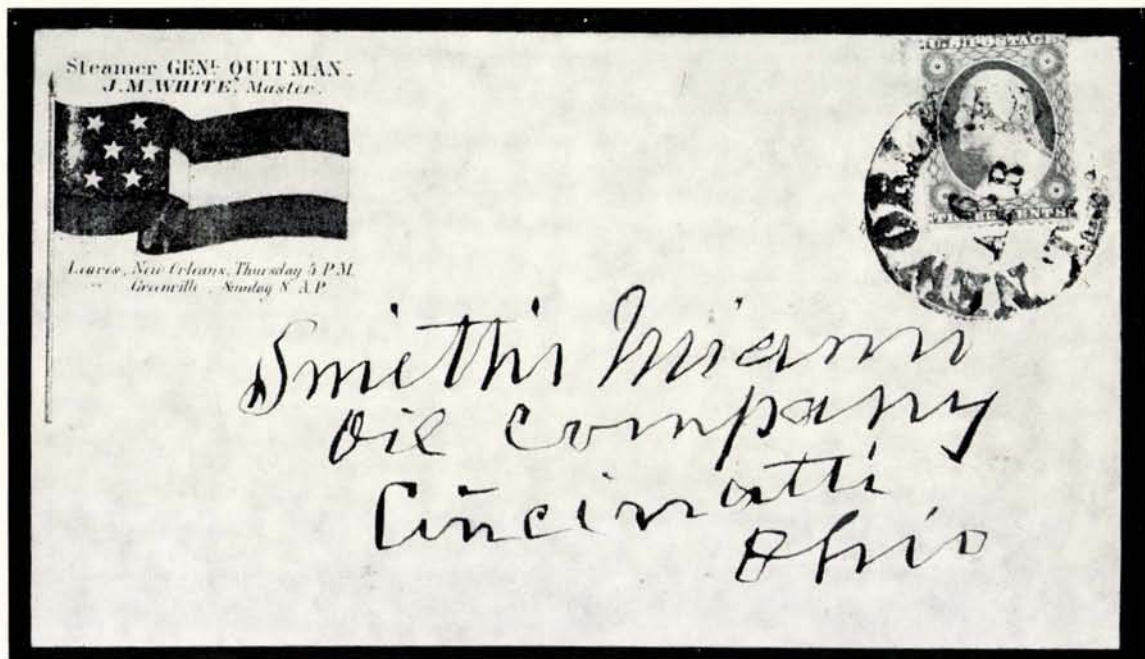


The above illustration is not to be used for the purpose of light on the flag of the United States.

- 774 ☒ **Ala. & Tenn. R.R.** Clear, large circle ties 5c Green, St. 1 (1) to May 1862 folded letter headed "Shelby" to "Selma", Very Fine, Very Scarce & undervalued in Scott at \$90.00 (Photo) **E. IX**
- 775 ☒ **Company Shops, N. C. (North Carolina R.R.)** Bold circle, no date logos, ties 10c Milky Blue (11a) to neat Brown war-time envelope to Hillsboro, N. C., Extremely Fine (Photo) **E. V**
- 776 ☒ **(North Carolina R.R.)** Official R.R. business envelope franked "P. C. C. Pres." (P. C. Cameron, Pres.) to R.R. Co. attorney at Greensboro, N. C., Sept. 16, 1861 letter enclosed written & signed by Cameron, headed "Company Shops" relates to legal matter of the R.R. Carried outside the mail, Very Fine —
- 777 ☒ **Estell Springs, N. & C. R.R.** (Nashville & Chattanooga) Bold dated oval ties 10c Milky Blue (11a) to neat Brown war-time envelope to Greensboro, N. C., Very Fine, An outstanding Showpiece (Photo) **E. X**

PACKET COVERS

- 778 ☒ **Mobile, Ala. Mar. 8, 1861**, Bold Double circle, struck twice on 3c Star Die Entire (U27) to New Orleans, La., "Steamboat" in sans-serif caps, Bold strike also; **Confederate States Usage**, Very Fine, Extremely Scarce (Photo) **E. X**
- 779 ☒ **New Orleans, La., Mar. 25, 1861**, Clear Double circle, Blurry "Steam 6" (5c Unpaid rate + 1c Way Fee) **Confederate States Usage of packet cover**, but before C. S. A. rate in effect, Fine & Rare (Photo) **E. VII**



- 780 ☒ **Steamer Gen'l. Quitman, J. M. White, Master, Imprinted on Patriotic Cover, 7-Star Flag, (Dietz, Ty. B-12).** Used to Cincinnati, Ohio, 3c Red (26) tied by Bold "New Orleans, La., 6 Apr. (1861) Confederate States usage across the lines well into Union territory. This service was permitted until June 1, 1861. A marvelous & spectacular rarity, Ex-Antrim (Photo) **E. XIV**

- 781 ☒ **Vicksburg & Greenwood Mail Packet "Dew Drop"** Over all litho design in Pink with Steam Boat picture. "Vicksburg, Miss., Aug. 2 (1861)" & "Paid" "5" to New Orleans. The "U" of "U. S." has been changed to read "C", & names of ship's officers also changed, Magnificent **Confederate Packet Cover** of the Greatest Rarity (See Dietz, p. 239) **(Photo)** E. XIII
- 782 ☒ **Pr. St. Vicksburg**, In ms. on 3c Star Die Entire (U27) Turned cover first use to Camden, Miss., then to New Orleans, with postal charge paid by a 5c Brown on White New Orleans Provisional (62X3) Three margins, just touched one side & tied by N. O. Double circle Sep. 4, 1861. A **Turned Packet Cover**, Wonderful Postal History piece, signed "Ashbrook" **(Photo)** E. XI

TRANS-MISSISSIPPI EXPRESS MAIL

- 783 ☒ **Cushing's Trans-Mississippi Express Mail**. Large Label (Dietz Ty. 2) used as seal on brown envelope to Liberty, Miss., No postmark but some evidence of a stamp having been removed from the cover. Fine example of a Rare Emergency Service. No postage may have been necessary since Liberty might have been reached directly by Cushing's messenger **(Photo)** E. X
- 784 ☒ **10c Blue, Ty. B (12). Horiz. Strip of Four, Trans-Mississippi Express Mail**, Tied "Richmond, Va. Nov. 11, 1863" to Alexandria, La., endorsed "Via Brandon, Miss." in ms. box. Both stamps & cover are remarkably Fine, Very Early use, Signed "Ashbrook", Ex-Emerson, A Wonderful example of this rare & historic emergency service **(Photo)** E. XIII
- 785 ☒ **20c Green (13)**. Two singles, Large margins to one a trifle cut in, tied by "Sherman, Tex.", repeated on the cover, a **Trans-Mississippi Express Mail** cover to Demopolis, forwarded to Jefferson, Ala. Endorsed "**Express Mail - Via Shreveport**", ms. "Due 10" for forwarding, and to add to the importance of this wonderful cover, it is a **Wall Paper Cover**, Brown geometric pattern. One of the most outstanding C. S. A. covers in existence ... **(Photo)** E. XIV

BLOCKADE RUN COVERS

- 786 ☒ **Blockade Run Cover**, Matamoros, Mexico to New Orleans. Folded cover, docketed July 1861, Blue "**A. Uhde & Co., Matamoros**" in Double oval, Forwarders' mark, "**Brownsville, Tex. 15, July**" pmk. & Bold "**Paid 10**". A cover which successfully ran the Gulf Coast Blockade via Berwick's Bay (ms. on the cover) before the fall of New Orleans, Fine, Rare ... **(Photo)** E. XII
- 787 ☒ **Blockade Run Cover**, sent via Nassau, Bahamas to Boston. **Carried out of the mail by the blockade runner** addressed to the care of senders' agent at Nassau where an 8d Due charge was shown, "**Nassau, Jul. 7, '64**" pmk., thence to N. Y. with 3c Rose (65) Horiz. Pair, some perfs trimmed, tied by clear "**N. York Steamship**" in circle, ms. "Due 14" payable by addressee at Boston. A Double weight cover, with the 3c pair recognized in part payment of the regular 10c rate from Nassau and the 14c Due makes up the proper 20c rate. A Choice, Historic cover of extreme rarity **(Photo)** E. XII
- 788 ☒ **Charleston, S. C., Oct. 20**, Clear circle, Large "**Steam-Ship**" in oval, "12" rate in pencil. Small Blue envelope to **Havana, Alabama, Confederate States**. Humorous note on back by the sender, Bit worn & without two flaps, Fine, Very Scarce **(Photo)** E. XII
- 789 ☒ **Wilmington, N. C., Oct. 24**, Bold circle ties 10c Blue (12) to **Blockade Run** cover to Atlanta, Ga., stamp slightly cut in. Bold "Ship" & ms. "2" for the Ship Fee., "**Due 10**" for forwarding to Atlanta. One of the very few existing covers where a Confederate stamp was recognized in payment of Blockade postage. Choice cover of the utmost rarity **(Photo)** E. XIII

- 790 ☒ **Blockade Run Cover, Liverpool, England to Petersburg, Va., 1863** folded letter, via Nassau & Wilmington, N. C., ms. "Ford'd by G. C. & Co." (Geo. Chambers & Co., Nassau), Rate mark of "24" deleted & changed to "Due 22", Double letter rate plus 2c Ship Fee., Blurry "Wilmington, N. C." pmk. & "Ship". Cover has faults & rather age stained but highly desirable and of the utmost rarity; 6 weeks in transit (Photo) **E. XI**

PRISONER OF WAR AND FLAG OF TRUCE COVERS

- 791 ☒ **Prisoner of War Cover, "Charleston, S. C." pmk. & Large Bold "10" ms. "Per Flag of Truce, via Savannah" & Red ms. "Ex"** Censor mark to Sandersville, Ga., One of the "600" Covers where 600 C. S. A. prisoners were moved to Charleston Harbor to prevent shelling of Fort Sumter & in retaliation for the Confederates confining 600 Union officers to Charleston, which was under bombardment from Port Royal. From a C. S. A. officer to his wife. Very Fine example of this rare usage (Photo) **E. VIII**
- 792 ☒ **Prisoner of War Cover, South to North, ms. "Soldier's Letter, Prisoner of War, Charleston, S. C.", at top of cover to Philadelphia. At left is "Ex'd" C. S. A. Censor mark & over it is "Soldiers letter, Stewart L. Wordford., Lt. Col. & Agent of Exchange. "Port Royal, S. C., Oct. 6, 1864" pmk. & Due 3. Col. Wordford was agent at Ruper Hospital, one of four military prisons in Charleston, Very Fine, A very important P. O. W. cover (Photo) **E. XI****
- 793 ☒ **Prisoner of War Cover, South to North, Light pencil Censor mark, Confederate States 10c Blue (10) Tied together with U. S. 3c Rose (65)** by large geometric cork, "Old Point Comfort, Va." pmk. to a P. O. W. at Point Lookout, Md., The 3c has bottom perfs. trimmed, not affecting the beauty or value of this exceptionally fine cover, Signed "Ashbrook" (Photo) **E. X**
- 794 ☒ **Prisoner of War Cover, North to South, Neat fresh cover, Boston, Mass. to Richmond, Va., U. S. 3c Rose (65). Nicked, Tied by "Paid" in frame & by Blue "Norfolk, Va., Jan. 29, 1862", Red "Boston, Mass., Jan. 14" on the cover which has the Blue "5" of Norfolk, ms. "Xd, DMC" Censor mark. Though addressed "Via Fortress Monroe" it is one of the very few covers which was sent Via Norfolk, Va. the "5" being the C. S. A. Due and is C. S. A. usage since Norfolk was not occupied by Union forces until May 10, 1862. The prison is obviously Fort Warren, in Boston Harbor. Choice cover, Very Rare. Antrim records show only 5 or 6 covers known from there (Photo) **E. XI****
- 795 ☒ **"Prisoner's Letter, Johnsons Island, O., Examined, G. S. B."** Unusually clear oval on fresh neat cover to Mt. Pleasant, N. C., U. S. 3c Rose (65) tied by target, C. S. A. 10c Blue (12) affixed over "Sandusky, Ohio" pmk. & tied by Richmond, Va. pmk. A Remarkably Fine & Rare cover; could easily be termed as ideal P. O. W. cover for better examples are seldom seen (Photo) **E. X**
- 796 ☒ **Prisoner of War Cover, North to South, 3c Rose (65) Perfs cut in, tied by target, "Delaware City, Del." pmk. to Mount Jackson, Va., C. S. A. postage paid by 10c Blue (11) mostly large margins, nicked in corner, ms. "Per Flag of Truce, via Fortress Monroe", Cover slightly aged but a Fine example of this rare usage (Photo) **E. X****

LOTS ON VIEW FROM OCTOBER 12th, 1972
OFFICES OPEN SATURDAY BEFORE SALE



782

Mrs. Canell May 10th 1865



via Berwick Bay

d. 10



786

PAID 70

Mrs. Avendano Bro.

FORWARDED BY E. H. FISHING.

783

Notice, April 2, 1864. We have the honor to inform you that...

DUE 10

2

789

SHIP



Express mail - 3
via New Orleans
d. 10



785

J. J. Lewis & Co.
New Orleans

Via Berwick Bay
Miss



784

Mrs. A. M. Salomon

J. J. Lewis & Co.
New Orleans

788



May 14

787



Carroll Hammond & Co.

Per flag of Trade
via Savannah Ga.

790

Mrs. G. W. Roughton
Sandusville
Garcia

Johns Island
Charleston S.C.

792



793



791

Mrs. G. W. Roughton
Sandusville
Garcia

Johns Island, Ga.

796



794

Mrs. G. W. Roughton
Sandusville
Garcia

795



Confederate States of America
POST OFFICE DEPARTMENT
OFFICIAL BUSINESS
FREE
CHIEF OF THE FINANCE DEPARTMENT

800

Confederate States of America
POST OFFICE DEPARTMENT
OFFICIAL BUSINESS
B. N. Colburn
CHIEF OF THE APPOINTMENT BUREAU
FREE
Mr. J. J. Lewis
New Orleans
La.

802



Confederate States of America
POST OFFICE DEPARTMENT
OFFICIAL BUSINESS
FREE
B. N. Colburn
CHIEF OF THE APPOINTMENT BUREAU

801

Port Defiance
Washington Co.
Va.

QUAKER PRISONER-OF-WAR COVERS

Because of their refusal to bear arms, a number of Quakers, conscripted to act as guards at the Salisbury, N. C. Military Prison were themselves made prisoners-of-war and incarcerated there until the end of the war. The conscripts were first sent to Lexington, N. C. for training as guards and it was from there they were sent Salisbury Prison.

- 797 **5c Blue, St. 2 (4). Horiz. Pair**, Large margins, incl. top sheet margin, tied by Blue "Charlottesville, Va., July 4, 1864" on cover to a known Quaker conscript at military address in Lexington, N. C., Very Fine, sent prior to his imprisonment **E. VII**
- 798 **Salisbury, N. C., Dec. 26, 1864** Clear circle, small "Paid" (Evidently no stamps available at the prison) Letter enclosed, from a known Quaker to his brother was probably uncensored since it treats of atrocities practiced on the sender, Slight soiling & part of flap torn, Very Unusual **E. VII**
- 799 **10c Dark Blue, K. & B. (12d)**. Clear to Huge margins with bit of bottom imprint, tied by "Salisbury, N. C.", Feb. 1865 letter enclosed to wife of a known Quaker tells of furloughs granted & some escapes, evidently a relaxation of prison harshness as war nears end **E. VII**

OFFICIAL IMPRINTED COVERS

- 800 **C. S. A. Post Office Dep't, Franked "A. Dimitry" Chief of the Finance Bureau**, Bold "Richmond, Va." pmk., matching "Free" on 3c Star Die Entire (U27) to Fort Defiance, N. C., small ink blot in T. R. corner, otherwise Very Fine **(Photo) E. VI**
- 801 **C. S. A. Post Office Dep't., Franked "B. N. Clements" Chief of the Appointments Bureau**, Bold "Richmond, Va." pmk., matching "Free" on 3c Nesbitt Entire (U10) to the P. M., Fort Defiance, N. C., Very Fine **(Photo)** **E. VII**
- 802 **C. S. A. Post Office Dept., Franked B. N. Clements" Chief of the Appointments Bureau**, Bold "Richmond, Va. Apr. 29, 1863" pmk., matching "Free" on 3c Star Die Entire (U27) to Fort Defiance, N. C. Very Fine **(Photo)** **E. VII**
- 803 **Newbern, N. C., 5 Paid**, Blue circle on cover Imprinted "**Quarter-master's Department, District of Pimlico**", O. B. to Fayetteville, N. C., Very minor wear, Fine, Very Scarce **E. V**

COLLATERAL

- 804 **Limestone Springs, S. C.** The extensive file of reference material and letters relating to the "find" by "Gen." Weatherly of the Limestone Springs, S. C. Postmaster's Provisional. There is an 1851 folded letter, dated July 2nd with Red postmark and the identical "5" used on the provisional. There are a few unstamped covers of the Dean correspondence, from which most of the known provisionals were found, including one cover with a tiny fragment of an adhesive stamp. There is considerable research material about the Dean family and a great deal of correspondence with leading students and specialists in Confederates. The late August Dietz was of the opinion it is a genuine provisional; the late Van Dyke MacBride was of the same opinion. Lawrence Shenfield was skeptical until he found a pair in the Luff Reference Collection after which he changed his opinion to favoring its status as a genuine postmaster's provisional. While Scott has never given it recognition there is not the slightest doubt that virtually all the leading students of C. S. A. Postal History are satisfied with the status as genuine postmaster's provisionals and they have been so certified by the Confederate Stamp Alliance, copies of the certificates being in the file while the original certificates accompany the stamps. This is a very important piece of research and deserves to be kept intact even though a couple of the covers could rate individual lot status

- 805 **Emory, Va.** Postal History Collateral, leading to the issue of the rare C. S. A. Provisionals. There are five covers: One with U. S. 3c Red (26) with blue **illustrated Corner Card of Emory & Henry College**, stamp tied "Emory, Va."; another with U. S. 1c Blue (9) bit cut into on small cover with invitation to a social function; another 1c Blue (9) large margins, ms. cancel, with gold invitation to a college function, and a block of U. S. 1c Blue, Ty. V (24) showing the full sheet margins on which the provisionals were subsequently made. (The block has become separated horizontally) Confederate items include two covers to Emory from the Nye correspondence; one a "Richmond, Va" and "Paid 5" June 3, 1861, Third day of function of the C. S. A. Postal Service; the other with pair of 5c Local Print #7, defective, addressed to "Emory & Henry" with March 1864 letter written on part of a printed form to list "Deserters", letter speaks of wartime problems and the shortage of stationery speaks for itself. The "Nye" letters tie on with the Provisionals. A very important historic group of covers, neatly written up on album pages **E. VII**
- 806 **THE LAST SHOT OF THE WAR.** Collateral material relating to the Confederate Ship "Shenandoah" which was in the Far Pacific at the fall of the Confederacy. Her last shot was fired June 28th 1865 after learning of the end of the war. She then sailed for Liverpool and surrendered to British authorities. The material consists of a picture of the "Shenandoah", a picture of James Iredell Waddell, her Commander, a picture of his home and a photo of a letter he wrote to the British Foreign Secretary offering to surrender his ship to British authorities. Also is a cover front addressed to a Confederate Prisoner at the U. S. Prison Hospital, Point Lookout, Md. with a 3c Rose #65 (faulty) tied by fancy geometric and clear "Richmond, Va., June 27th" postmark, the same day (because of the International Date Line) that the "Shenandoah fired the last shot of the War." —
- 807 **Guilford County, N. C. Bond,** A Post-War Reconstruction Bond of \$100.00 printed on both sides of a sheet of defunct paper money issued by Farmer's Bank of Greensboro, Four se-tenant bills of \$3.00, \$4.00, \$5.00 & \$10.00. Imprinted on both sides, the back showing all details, Minor aging, Scarce Collateral Piece **E. V**
- 808 **Guilford County, N. C. Bond.** Similar to preceding lot, the two, mounted front & back make an unusually interesting piece, suitable for framing **E. V**

END OF SALE — THANK YOU

LOTS ON VIEW FROM OCTOBER 12th, 1972

OFFICES OPEN SATURDAY BEFORE SALE

IS YOUR COLLECTION FOR SALE?

REALIZE IMMEDIATE CASH
PLUS THE ADDED ADVANTAGE OF
SELLING THROUGH OUR AUCTIONS

We will advance immediate cash up to 75% of our appraisal value, of what your collection should realize at auction. There is no interest charge.

Your collection will then be sold in one of our coming auction sales. All stamps are expertly and advantageously lotted in attractive, well illustrated catalogs. Lotting is meticulously planned under our personal supervision. Commission is 20% of the gross realization. There is no lotting fee or any other charges. Final settlement is made within five weeks after the sale. We have been continuously conducting stamp auctions in the United States for over forty-two years.

Valuable collections and stamp holdings are especially wanted, but we will accept properties valued from \$500 upwards. Send all stamps direct for appraisal. Auction advance will be remitted shortly after receipt. If not entirely pleased, stamps will be returned at our expense. If circumstances warrant due to bulk or value, we will travel anywhere to inspect important properties.

ROBERT A. SIEGEL
AUCTION GALLERIES, Inc.

(Licensed and Bonded Auctioneer)

120 EAST 56th STREET
NEW YORK, N. Y. 10022

(Tel. 753-6421)

ROBERT A. SIEGEL AUCTION GALLERIES, Inc.

120 EAST 56TH STREET
NEW YORK, N. Y. 10022

420TH SALE

PRICES REALIZED

OCTOBER 20TH, 1972

THE
A. EARL WEATHERLY
COLLECTION

GROSS REALIZATION \$127,006.00

501	525.00	541	230.00	581	100.00	621	210.00	661	450.00
502	700.00	542	900.00	582	120.00	622	1750.00	662	225.00
503	425.00	543	35.00	583	67.50	623	450.00	663	80.00
504	800.00	544	42.50	584	450.00	624	1750.00	664	550.00
505	475.00	545	36.00	585	475.00	625	1300.00	665	425.00
506	475.00	546	115.00	586	350.00	626	260.00	666	1500.00
507	75.00	547	67.50	587	220.00	627	550.00	667	425.00
508	50.00	548	35.00	588	525.00	628	1850.00	668	160.00
509	800.00	549	85.00	589	21.00	629	270.00	669	6250.00
510	180.00	550	300.00	590	37.50	630	450.00	670	35.00
511	350.00	551	50.00	591	425.00	631	1500.00	671	65.00
512	230.00	552	52.50	592	67.50	632	500.00	672	65.00
513	280.00	553	70.00	593	140.00	633	1050.00	673	65.00
514	67.50	554	160.00	594	32.50	634	850.00	674	32.50
515	375.00	555	57.50	595	50.00	635	400.00	675	1500.00
516	150.00	556	85.00	596	90.00	636	600.00	676	95.00
517	270.00	557	35.00	597	270.00	637	600.00	677	85.00
518	80.00	558	475.00	598	475.00	638	600.00	678	35.00
519	80.00	559	120.00	599	180.00	639	550.00	679	725.00
520	11.00	560	675.00	600	70.00	640	1200.00	680	47.50
521	45.00	561	130.00	601	375.00	641	3250.00	681	280.00
522	115.00	562	75.00	602	1050.00	642	1150.00	682	115.00
523	20.00	563	550.00	603	325.00	643	2700.00	683	42.50
524	52.50	564	180.00	604	800.00	644	1650.00	684	230.00
525	85.00	565	5750.00	605	2300.00	645	800.00	685	90.00
526	40.00	566	200.00	606	750.00	646	210.00	686	45.00
527	27.00	567	26.00	607	500.00	647	500.00	687	110.00
528	170.00	568	25.00	608	725.00	648	260.00	688	45.00
529	100.00	569	72.50	609	525.00	649	75.00	689	130.00
530	24.00	570	18.00	610	850.00	650	1150.00	690	140.00
531	26.00	571	20.00	611	800.00	651	600.00	691	300.00
532	180.00	572	135.00	612	170.00	652	280.00	692	24.00
533	75.00	573	115.00	613	1450.00	653	350.00	693	160.00
534	280.00	574	170.00	614	625.00	654	950.00	694	280.00
535	62.50	575	125.00	615	1250.00	655	190.00	695	37.50
536	28.00	576	55.00	616	210.00	656	725.00	696	50.00
537	47.50	577	47.50	617	42.50	657	325.00	697	325.00
538	105.00	578	45.00	618	750.00	658	190.00	698	230.00
539	72.50	579	52.50	619	325.00	659	160.00	699	75.00
540	170.00	580	160.00	620	400.00	660	500.00	700	425.00

701	62.50	723	260.00	745	250.00	767	230.00	789	1300.00
702	145.00	724	850.00	746	135.00	768	850.00	790	475.00
703	525.00	725	475.00	747	130.00	769	60.00	791	210.00
704	525.00	726	67.50	748	105.00	770	120.00	792	210.00
705	500.00	727	145.00	749	110.00	771	270.00	793	290.00
706	1000.00	728	850.00	750	100.00	772	145.00	794	425.00
707	1800.00	729	1150.00	751	800.00	773	210.00	795	500.00
708	37.50	730	700.00	752	250.00	774	350.00	796	280.00
709	85.00	731	500.00	753	180.00	775	50.00	798	160.00
710	180.00	732	850.00	754	180.00	776	60.00	799	67.50
711	150.00	733	120.00	755	170.00	777	400.00	800	105.00
712	250.00	734	85.00	756	260.00	778	375.00	801	115.00
713	625.00	735	50.00	757	500.00	779	57.50	802	50.00
714	52.50	736	150.00	758	150.00	780	2200.00	803	50.00
715	160.00	737	105.00	759	90.00	781	700.00	804	50.00
716	150.00	738	300.00	760	260.00	782	150.00	805	135.00
717	220.00	739	250.00	761	325.00	783	325.00	806	400.00
718	85.00	740	450.00	762	450.00	784	1000.00	807	40.00
719	25.00	741	575.00	763	350.00	785	1800.00	808	35.00
720	47.50	742	1100.00	764	150.00	786	450.00		
721	200.00	743	72.50	765	500.00	787	725.00		
722	80.00	744	72.50	766	90.00	788	675.00		