

"BLOCKADE POSTAGE"

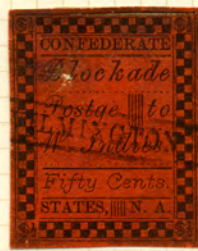
BOGUS



"GALVESTON"

"WILMINGTON"

TYPE 1A - ROOKE - "WINDIES" - "#14" - "25 CENTS"



"WILMINGTON"

"GALVESTON"

"WILMINGTON"

TYPE 1B(a) - ROOKE - LINE OF DOTS BELOW "BLOCKADE"



"MORILE"

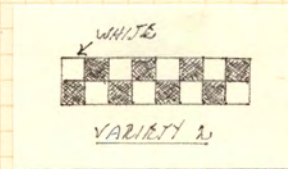
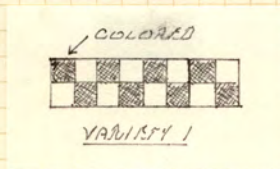
"GALVESTON"

"CHARLESTON"

TYPE 1B(b) - ROOKE - LINE OF DOTS ABOVE "BLOCKADE"

TYPE 1B - ROOKE - "WINDIES" - "#14" - "FIFTY CENTS"

VARIETY 1 (P.S.F.) - SEE SKETCH



TYPE 1A

TYPE 1B(a)

VARIETY 2 (P.S.F.) - SEE SKETCH



"BLOCKADE POSTAGE"  
BOGUS



"GALVESTON"



"MOBILE"



"WILMINGTON"



"GALVESTON"



"WILMINGTON"

TYPE C - ROOME - "EUROPE" - "#1" - "ONE DOLLAR"  
VARIETY 1 (P.B.F.)



"WILMINGTON"

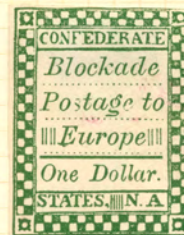
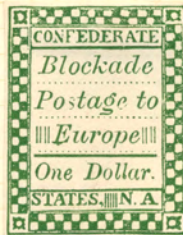
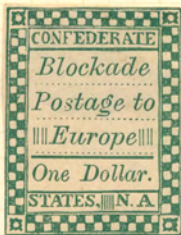
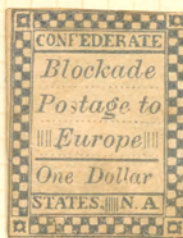
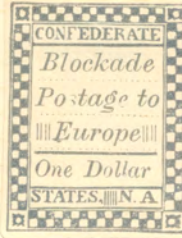
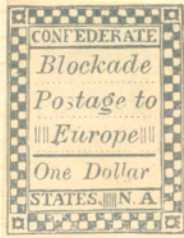
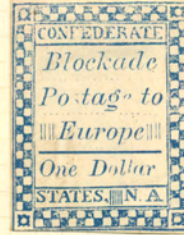
TYPE D - ROOME - "W.INDIES" - "#1" - "ONE DOLLAR"  
VARIETY 1 (P.B.F.)



"BLOCKADE POSTAGE"  
BOGUS



TYPE 2 - ROONE.

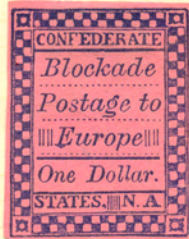
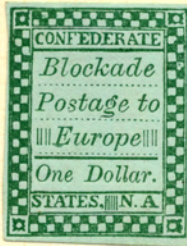


TYPE 3 - BY S. ALLAN TAYLOR ROONE

(CONT.)



"BLOCKADE POSTAGE"  
BOGUS

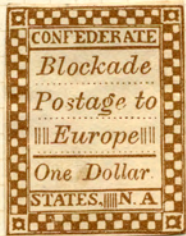
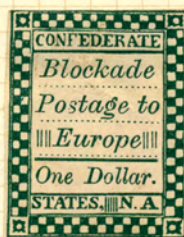
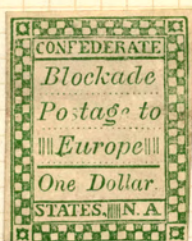


— TYPE 3. BY S. ALLAN TAYLOR 'ROOKIE' —



"BLOCKADE POSTAGE"

BOGUS



TYPE 3 BY S. ALLAN TAYLOR ROOPE

"NEW CONFEDERATE STATES"

ENTIRELY BOGUS.



EX - ROBSON HOWE  
SEE "GARRY CONFEDERATES" N.H.



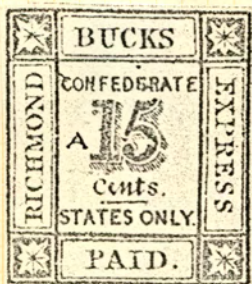
BUCKS RICHMOND EXPRESS  
BOGUS

#54 PAT PARAGRAPHS

1823

BUCKS RICHMOND EXPRESS

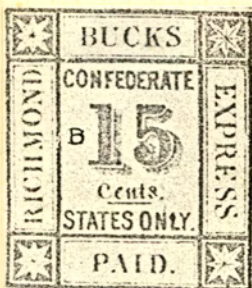
Regarding this fraudulent emission, August Dietz' magnificent work on the postal service of the Confederate States lists a set consisting of 1c, 2c, 5c, 10c, 15c, 20c and 50c, mentions later printings in colors other than those listed for those values, and illustrates a 15c, 25c, and 50c. That is bad enough, but the whole story is even worse. Altho the 49 varieties listed below have all been seen, even this list is not believed to be complete.



Title in large letters

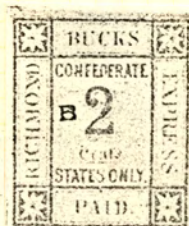
SERIES I - TYPE 2a  
- RORKE

Numerals shaded with diagonal lines  
A;—Narrow "U" and topheavy "S" in "BUCKS"—stem of "5" slants; 1c black, 2c red brown, 5c brown, 10c blue, 15c green, 20c vermilion.

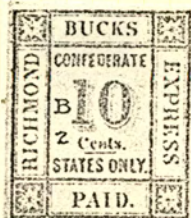


SERIES I - TYPE 1 - RORKE

B;—Wide "U" in "BUCKS" and "S" too tall, stem of "5" vertical; 1c black, 2c rose, 5c brown, 10c black, 10c blue, 15c yellow green, 20c vermilion. (15c illustrated by Dietz)



SERIES I - TYPE 6 - RORKE  
(LISTS ONLY 2c DULL RED)  
(5c BROWN)

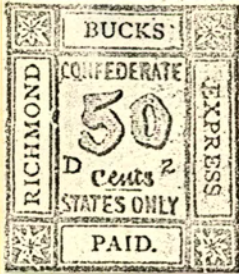


B-2;—Similar to B but many minor differences in the inscriptions in the central rectangle; well-formed "S" in "BUCKS." 10c blue.



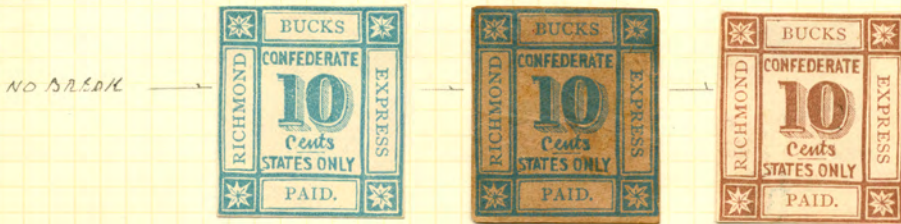
BUCKS RICHMOND EXPRESS

BOGUS



SERIES II TYPE C - ROOKS  
 (LISTED ONLY 50¢ BLACK OR BLUE GREEN) etc.

D-2;--Numerals differ from Type D; 50c dark green on pale green.



(1 TO ROOKA LSA)

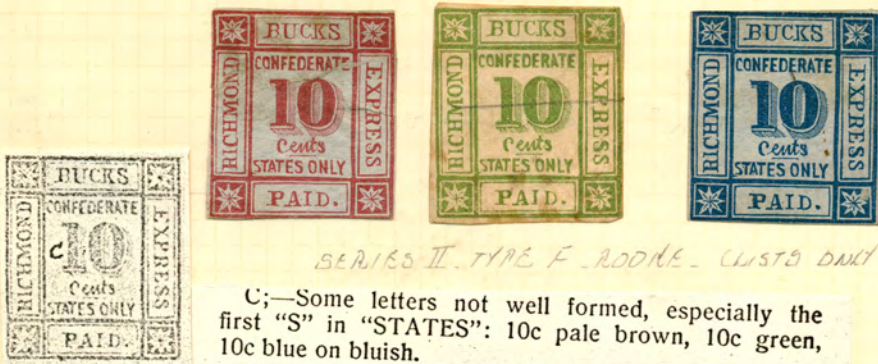
D-3 (P.S.F.) - DIFFERENT NUMERALS FROM D-2

SERIES II TYPE E - ROOKS



CONFEDERATE  
POSTMASTERS PROVISIONALS

BUCKS RICHMOND EXPRESS  
BOGUS

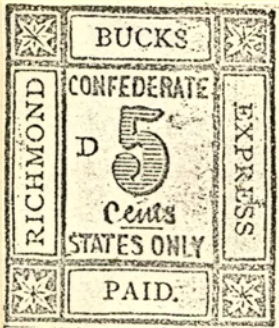


SERIES II. TYPE F. BOOKS. LISTED ONLY 10¢ RED ON BLUE etc.

C;—Some letters not well formed, especially the first "S" in "STATES": 10c pale brown, 10c green, 10c blue on bluish.



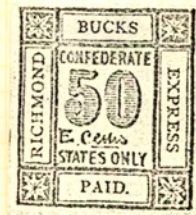
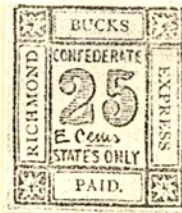
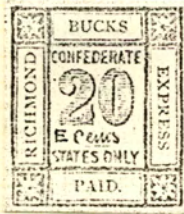
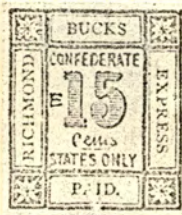
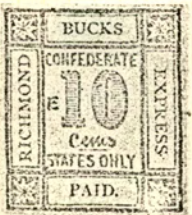
SERIES II. TYPE A. BOOKS



Title in smaller letters  
D;—"CONFEDERATE STATES" as on Type C; 5c black, 10c pale brown, 10c pale blue, 10c pale blue on pinkish, 15c carmine, 20c violet, dark violet, and violet black, 20c red, 20c red on yellow, 20c black on yellow, 25c green, 25c buff, 50c green.



BUCKS RICHMOND EXPRESS  
BOGUS

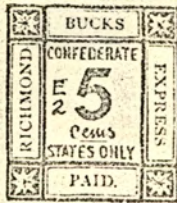


"ts" of "Cents" incomplete

SERIES II, TYPE A - BOONE

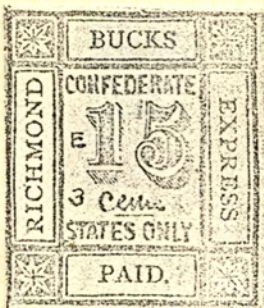
Otherwise same as Type D

E;—2c blue, ultramarine; 5c black; 10c red, purple, red on buff, black on lilac; 15c green; 20c black, purple; 25c bistre, red; 50c rose. (25c illustrated by Dietz)



SERIES II, TYPE (D) - BOONE

E-2;—Numeral "5" is solid and unshaded. 5c black.

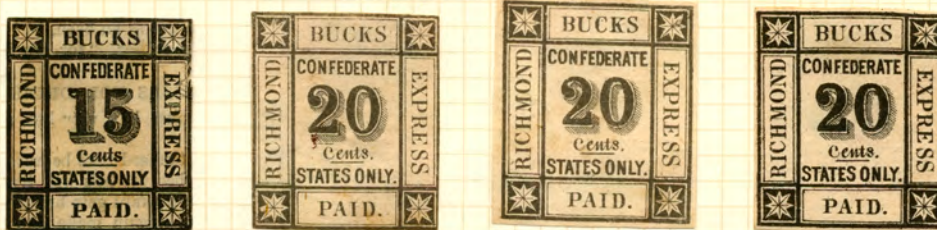
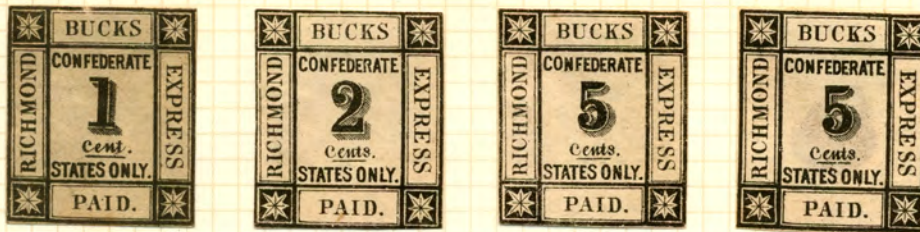


E-3;—Numerals differently shaped from Type E, but are shaded as on Types A, B, C; 5c red on pale green; 15c carmine.

SERIES II, TYPE D - BOONE



BUCK'S RICHMOND EXPRESS  
BOOKS



ILLUSTRATIONS  
PRINTING ON  
BACK.  
SIMILAR TO  
74. I I - BUT  
TYPEFACE  
DIFFERS.

BLACK IMPRESSIONS ARE "REPORTED PROOFS" BOOKS



COMPLETE SET - C. WALSH - NOV. 7, 1974



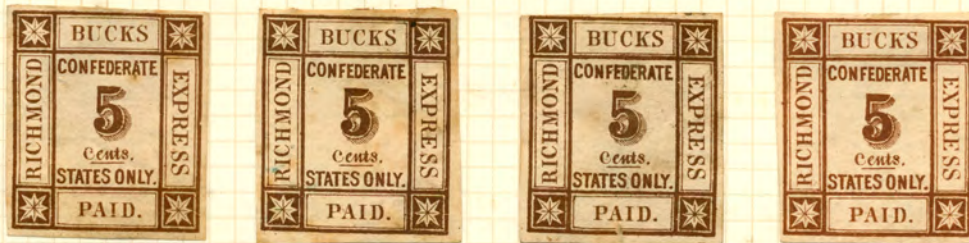
FINE, HARD, TRANSPARENT PAPER

SERIES I TYPE I BOOKS



BUCK'S RICHMOND EXPRESS

BOGUS



SERIES I, TYPE 1 - BOGUS



BUCK'S RICHMOND EXPRESS  
BOOKS



ENGRAVED

SERIES I, TYPE 2, BOOKS



CARD STOCK

AS MOENS' "GOLD SHEET"

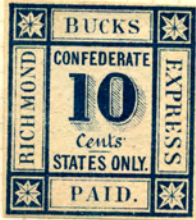
SERIES I, TYPE 5, BOOKS



UNLISTED COLOR



UNLISTED COLOR



SERIES I, TYPE 3, BOOKS



UNLISTED COLOR

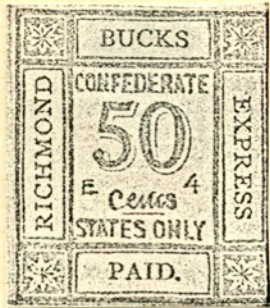


UNLISTED COLORS

SERIES I, TYPE 6, BOOKS



BUCKS RICHMOND EXPRESS  
BOGUS



E-4;—Numerals different again, and with single shading line; 50c green, (illustrated by Dietz).

SERIES II. TYPE B. BOOK  
(LISTS ONLY 50c GREEN)

ADDITIONAL SPECIMENS  
SECTION II. TYPES A, B, C, D, E, F.

NO BREAK



TY. E. PAT. PAR.  
"TS" INCOMPLETE



TY. D. PAT. PAR.  
"TS" COMPLETE



TY. E. PAT. PAR.  
"TS" INCOMPLETE

SECTION II. TYPE A. BY S. ALLAN TAYLOR BOOK



BUCKS RICHMOND EXPRESS  
BOGUS



TY. D. PAT. PAID.  
"15" COMPLETE

SECTION II - TYPE A - BY S. ALLAN TAYLOR ROOKE



TYPE E. PAT. PAID.  
"15" INCOMPLETE

SECTION II - TYPE A - BY S. ALLAN TAYLOR ROOKE



BUCK'S RICHMOND EXPRESS  
BOARDS



TYPE D. PAT. PAA.  
"15" COMPLETE



TYPE E. -  
PAT. PAA.  
"10" IN COM-  
PLATE

SECTION II TYPE A. BY S. ALLAN TAYLOR. ROOM 11.



BUCKS RICHMOND EXPRESS  
BOGUS



TYPE II B. ROOK



TYPE II C. ROOK

BREAK →

"75" INCOMPLETE



"75" INCOMPLETE.

TYPE II D. ROOK



TYPE II E. ROOK



TYPE II F. ROOK

ALL SECTION II TYPES BY S. ALLAN TAYLOR



TYPE II F



"C.A. LYFORD & Co. - BOSTON  
LYFORD WAS AN ASSOCIATE OF  
SAYRE, ALLAN TAYLOR



"FLAG ESSAY"  
BOGUS



TYPE I BY S. ALLAN TAYLOR ROOKE



"FLAG ESSAY"  
BOGUS



TYPE 2. BOGUS



TYPE 3 (C.M.F.). NOT IN BOGUS  
GIBBONS' CATALOGUE, 1888



TYPE 4a. "10" CENTS



TYPE 4b. "X" CENTS

TYPE 4. SIMILAR TO TYPE 1 - CRUDE,  
MODERN REPRODUCTIONS. C. 1940-1960  
(MENTIONED BY BOGUS)



"FLORIDA EXPRESS"

BOGUS ISSUES



TYPE 1 - ROOKIE



TYPE 2 - ROOKIE - MOENS' CATALOGUE, 1892



TYPE 3 - ROOKIE

ALL WOVE  
PAPER



TYPE 4 - BY S. ALLAN TAYLOR - ROOKIE

(SEE SPECIAL PAGES)



TYPE 5 - ROOKIE - AS PATTON'S "GOLD SNIPPER" (MOENS?)



"FLORIDA EXPRESS"  
BOGUS ISSUE



TYPE 4 - BY S. ALLAN TAYLOR - ROORE

ALL WOVE PAPER.

REFERENCE:  
"THE PHILATELIST". JAN. 1968  
(P. 25 CRIPPED)

SEE ALSO S. A. TAYLOR CO.  
(E.P.)<sup>2</sup> - 8 SPECIMENS,  
6 OR 7 DIFFERENT.

(CONT.)



"FLORIDA EXPRESS"  
BOGUS ISSUE



THICK PAPER



HOVER LAID

TYPE 4 BY S. ALLAN TAYLOR BOGUS

(CONT.)

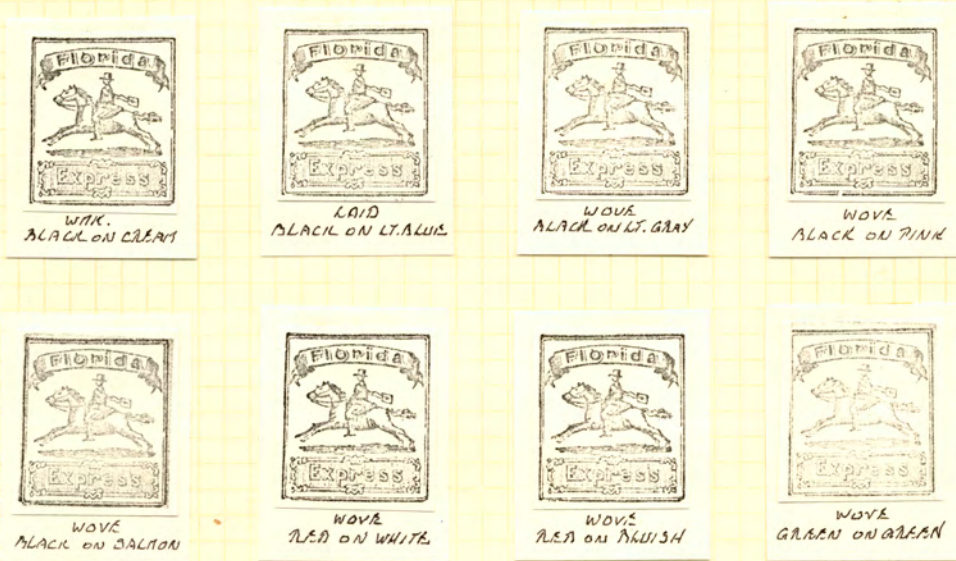


"FLORIDA EXPRESS"  
BOGUS ISSUE



ALL WOVE PAPER

TYPE 4 - BY S. ALLAN TAYLOR - ROOKIE



XEROX OF TYPE 4 SPECIMENS IN S. ALLAN TAYLOR  
COLLECTION FROM ELLIOT PERRY - E.P.<sup>2</sup>



RICHMOND, VA.  
BOGUS "FLAG" ISSUE



TYPE 1A ROOKIE



TYPE 1B ROOKIE



RICHMOND, VA.  
BOGUS "FLAG" ISSUE.



FRAME LINE  
COMPLETE.

LARGE PRINTS



FRAME LINE  
BROKEN  
& ALL BELOW

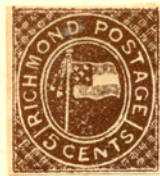
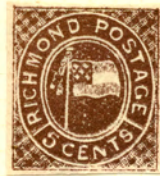


TYPE I C. BY S. ALLAN TAYLOR - BOOKS  
TYPE II (CENT)

(CONT.)



RICHMOND, VA.  
BOGUS "FLAG" ISSUE.



TYPE 1E - ROORE



"3 CENTS" - UNLISTED - TYPE 1F (P.A.F.)  
VARIETY OF MOENS' "GOLD SHEET" RETOUCHEE,  
AND WITH BOGUS VALUE.



TYPE 1G (P.A.F.) - MODERN PRODUCT



RICHMOND, VA.  
BOGUS "CANNON" ISSUE



TYPE 2A - PROOF  
AS TOWN'S CATALOGUE 1892



TYPE 2B - BY S. ALLAN TAYLOR - PROOF  
(CONT.)







THE "STONEWALL" JACKSON, TEN CENTS.

**Sloane's Column**

Weekly column conducted by George B. Sloane, 116 Nassau St., New York 38, N. Y., recognized philatelic expert and authority.

**Confederate, 10c Stonewall Jackson**

Much has been written about this stamp since it was first reported in *The Stamp Collector's Magazine* (London), late in 1867. Its history is veiled in mystery and these notes are not likely to contribute much to the story, but I do believe the stamp was prepared under proper supervision and probably by De La Rue & Co., of London, who furnished the 5c stamps of 1862 in similar design portraying Jefferson Davis.



It was a typographed printing and the copy I have is in dull red on white paper. It is extremely rare, only a very few copies being known.

After it had been noted in the London magazine, the report was ridiculed in *The American Stamp Mercury* (Dec. 25, 1867), edited by F. Trifet, Boston, and considerable controversy and correspondence began to develop. H. St. George Offutt, who had been Chief of the Contract Bureau, Confederate Post Office Department, was consulted and in a long letter dated April 14, 1868, to the *Mercury* characterized the stamp as a fraud. In my own opinion I feel that Offutt was mistaken and had been unaware that such a stamp had been worked up in London as a design for a possible issue, never used as an "essay," never brought to Offutt's attention.

The stamp illustrated at the left above is the original. To the right is the fake, occasionally seen, circulated by S. Allan Taylor and which he marketed at once in the midst of the controversy. It was printed from the identical electrotype used to illustrate the stamp in the *Mercury*, of July 1868. Taylor and Trifet, both in Boston, were co-editors of the journal and quite friendly, but the friendship blew up less than a year later. Taylor's counterfeit is usually seen in a bright red on white.

There is one more incident in the story. The last letter in the series of several that were published appears in the *Stamp Collector's Magazine*, October 1, 1868. It is from James M. Chute, Boston, who takes time out from his discussion of another subject to report that he has been informed by "Mr. Ludwig, of Hoyer & Ludwig, Richmond," that the Jackson stamp "was never engraved for the Confederate government" and that it was "in fact, a trick of certain New York dealers." Chute's contribution was worthless—he was a "front" for Taylor, but the editors didn't know that.



FROM LEONARD H. HARTMAN.

TYPE 1A - ROOKIE

PHOTO OF "ORIGINAL", OWNED BY ROBSON HOWE, LONDON.

Now in PBF collection - PRECEDING PAGE



TYPE 2 - ROOKIE

COUNTERFEIT BY S. ALLAN TAYLOR



TYPE 3 - ROOKIE

MODERN IMITATIONS

OFFSET



BOGUS CONFEDERATES

THE "STONEWALL" JACKSON, TEN CENTS.



TYPE 1B



TYPE 1B - ROOKIE



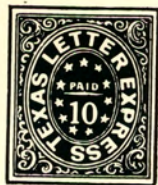
EX-ROBSON LOWE COLLECTION  
(FROM H.F. ROOKE .8/8/69)

TYPE 1A - ROOKIE

Original Essay: Damaged  
impression, showing fine  
printing.



MODERN CARAICA STRIPS  
 "WITH A CONFEDERATE FLAVOR"  
 - H.F. ROORIE



EXPRESS



WORTH TEXAS

TEXAS LETTER EXPRESS  
 LOCAL POST



FIRST ANNIVERSARY OF OPERATION  
 25 NOVEMBER 1969  
 FORT WORTH, ARLINGTON, GRAND PRAIRIE, & DALLAS  
 ★ T E X A S ★

"TEXAS LETTER EXPRESS"  
 1969

FROM H.F. ROORIE  
 JUNE 3, 1970

SEE THE CINDERELLA PHILATELIST  
 VOL. 9 NO. 3 - JULY, 1969