

THE "SPRINGFIELD" C.S.A. "FACSIMILES"

THESE CONFEDERATE FORGEAIES, PRODUCED BY THE TATHAM STAMP & COIN CO., OF WEST SPRINGFIELD, MASS., WERE FIRST OFFERED IN 1934 AS "REPRINTS". ACTUALLY THEY WERE DERIVED FROM AUGUST DIETRICH'S "FAC-SIMILES DIE-PROOFS", METICULOUSLY DRAWN ENLARGEMENTS OF C.S.A. POSTAGE STAMPS.

THE FIRST EDITION CONSISTED OF 12 STAMPS, WITH #7 (#206). 5¢. 1862. LOCAL PRINT, AND #12. 10¢. 1863. TYPE II, LACKING; THESE WERE LATER ADDED TO COMPLETE THE SET.

ORIGINALLY NO MARKINGS WERE PLACED ON THE BACK, (TYPE A), SUBSEQUENTLY THE DESIGNATION "FACSIMILE" WAS HANDSTAMPED ON THE REVERSE OF EACH STAMP IN THE SHEET OF 25 (5X5). PRINTED VERSIONS APPEARED LATER WITH "FACSIMILE", FOLLOWED BY "FACSIMILES/NO. 100", ETC.,

TYPES OF "FACSIMILE" IN PROBABLE ORDER



TYPE A - NO "FACSIMILE".



TYPE B - "FACSIMILE"
11/2 - 12 MM. HANDSTAMPED
VIOLET - GRAY



TYPE D - "FACSIMILES"
11/2 MM. PRINTED - BLACK

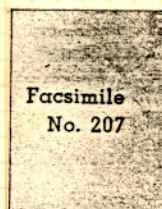


TYPE C - "FACSIMILE"
11/2 - 12 MM. HANDSTAMPED
VIOLET - GRAY.
(COLORATED VERSION OF TYPE B.)



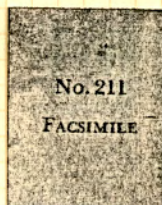
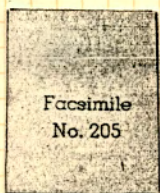
TYPE E - "FACSIMILES"
11/2 MM. PRINTED - BLACK

"SPRINGFIELD" - TYPES OF "FACSIMILE" (CONT.)



TYPE F. "FACSIMILE/NO. 2--"
1 1/2 MM. PRINTED - WHITE
TYPE Fa. SAME - GRAY

TYPE Fb. "FACSIMILE/NO. 2--"
1 1/2 MM. PRINTED - BLACK



TYPE G. "FACSIMILE/NO. 2--"
1 1/2 MM. PRINTED - GRAY

TYPE H. "NO. 211 / FACSIMILE"
1 MM. PRINTED - LIGHT BLUE
(OCCURS ONLY ON #R. 109. 1813. T. II.)



TYPE A ³

TYPE C ⁴

TYPE D ¹

THE TATHAM BOOKLET

THE TATHAM STAMP & CO. CO. DISTRIBUTED A BOOKLET CONTAINING A COMPLETE SET OF 14 "SPRINGFIELDS", © 35¢, ENTITLED "THE POSTAGE STAMPS OF THE CONFEDERATE STATES OF AMERICA" BY ROBERT W. BARRENT. WITH DESCRIPTIVE AND HISTORICAL TEXT, ILLUSTRATED, ONE OF THE "JASCO EDUCATIONAL BOOKLETS - VOL. 16"; COPYRIGHTED IN 1941 BY H. E. MACINTOSH.

1ST EDITION. HAS AUTHOR'S NAME ON FRONT COVER, AND HIS INITIALS ON BACK COVER.

CONTAINS "FACSIMILE" TYPES C, E, F, Fa, Fb, G & H.

2ND EDITION. AUTHOR'S NAME AND INITIALS OMITTED. CONTAINS "FACSIMILE" TYPES F, Fa, Fb, G & H.

THE "SPRINGFIELD" CONFEDERATE "FACSIMILES"



8



14

NO "FACSIMILE" TYPE A



1



2



3



4



5



6



8



9



10



11



13



14

ALL ABOVE:
USPICK 1966

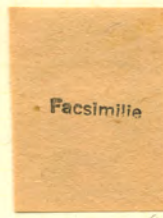
EARLY SET - 12 STAMPS

TYPE C "FACSIMILE" IN VIOLET OR GRAY - ON BACKS



3

TYPE C
"FACSIMILE"



8

TYPE D
"FACSIMILE"



5

TYPE E
"FACSIMILE"



9

TYPE E



6

TYPE D "FACSIMILE" IN BLOCK LETTERS, ALACH
ONLY COPY - 4 ONLY COPY IN LIGHT BLUE

THE "SPRINGFIELD" CONFEDERATE "FACSIMILES"

TYPE Fa

Facsimile
No. 205

6



1

3



4



5



11

ALL ABOVE TYPE Fa



COLOR VARIETY 2



10

ALL C. W. H. S. L. E.
NOV. 7, 1874

TYPE F "FACSIMILE/NO. 201"
(WHITE)

TYPE F "FACSIMILE/NO. 209"
(WHITE)

THE "SPRINGFIELD" CONFEDERATE "FACSIMILES"



1



2



3



4



5



6



7



8



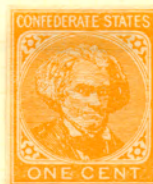
9



10



11



12

SET: PHW

THE "FIRST EDITION"

TYPE A - NO "FACSIMILE" ON BACKS

PRINTED ON ROUGH, WOOD-PULP PAPER

ONLY 12 STAMPS IN SET -

- LACKS #7, 8, RICHMOND PRINT
AND #12, 13, TYPE II.

THIS SET WAS KEPT BY PHILIP H. WARD IN AN
ENVELOPE WITH THE ADVERTISEMENT ON THE PRECEDING
PAGE. PROBABLY BOTH WERE RECEIVED IN 1934

THE "SPRINGFIELD" CONFEDERATE "FACSIMILED"



EARLY SET - NO "FACSIMILE" - INCOMPLETE
TYPE A



EARLY SET - LACOS #74#12
"FACSIMILE" - AS SHOWN - TYPE B

ALL C. W. WALKER
NOV. 7, 1874

THE "SPRINGFIELD" CONFEDERATE "FACSIMILES"



TYPE FB⁰¹

C.W. 174
56

8



12



14



11



12

TYPE H
OCCURS ONLY ON #12
"AN FACSIMILE"

ALL - C. WOLSKEL
NOV. 7, 1974

THE "SPRINGFIELD" CONFEDERATE "FACSIMILES"



1



2



3



4



5



6



8



9



10



11



13

THE "WILCOX" SET - 11 STAMPS - LACKS #7, #12, #14
TYPE B - "FACSIMILE" - LIGHT GRAY ON BACKS



UPPER - 74 B6
LOWER - 74 B.

THE TATHAM FACSIMILES

"FACSIMILES" ON BACK
NO NUMBERS -

CARL WALSH HAD "SPRINGFIELDS"
IN SHEETS 5x2 (Nov. 20, 1960) - SEE SHEET OF #11

WELL - N.C.
MARCH 9, 1962
8 31 G. 19, 1962



75773
M.Y.C.

W.H.L. "B"

"FACSIMILES" ON BACK
NO NUMBERS " "

THE TATHAM FACSIMILES
"SPRINGFIELD"

WEILL, N.C.
MARCH 9, 1962
& DEC. 19, 1962





C. WALSH. 2.50. NOV. 7. 1974

#1

THE "SPRINGFIELD" FORGERY

NO "FACSIMILE" OR NUMBER ON THE BACK



C. W. K. S. R. 150. NOV. 7. 1974

#2

THE "SPRINGFIELD" FORGERY

NO "FACSIMILE" OR NUMBER ON THE BACK



D. WALSHE - 2.50 - NOV. 7. 1974

#3

THE "SPRINGFIELD" FORGERY

NO "FACSIMILE" OR NUMBER ON THE BACK



O. WALSKE - 2.50 - NOV. 7, 1974

#4

THE "SPRINGFIELD" FORGERY

"FACSIMILE NO. 203" IN BLACK ON REVERSE
TYPE 76



C. WALKER 2.50 NOV. 7. 1874

#7

THE "SPRINGFIELD" FORGERY
NO "FACSIMILE" OR NUMBER ON THE BACK



C. WALSH - 250 - NOV. 7, 1974

#5

THE "SPRINGFIELD" FORGERY

NO "FACSIMILE" OR NUMBER ON THE BACK



C. WALTON - 2.50. NOV. 7. 1974

#6

THE "SPRINGFIELD" FORGEY

NO "FACSIMILE" OR NUMBER ON THE BACK



C. W. WASKIE 2.50 - NOV. 7, 1974

#8

THE "SPRINGFIELD" FORGERY

NO "FROSMILE" OR NUMBER ON THE BACK



C. W. WALKER - 2.50 - NOV. 7, 1974

#8

THE "SPRINGFIELD" FORGE.

"FACSIMILE NO. 207" IN BLACK ON REVERSE.
TYPE 76.



C. WALSLEY 2.50 - NOV. 7, 1974

#9

THE "SPRINGFIELD" FORGERY
NO "FACSIMILE" OR NUMBER ON THE BACK



C. WAGNER. 250. NOV. 7. 1974

#10

THE "SPRINGFIELD" FORGERY

NO "FACSIMILE" OR NUMBER ON THE BACK



C. VALSKE - DEC. 6, 1925 - L. 50

#11

THE "SPRINGFIELD" FORGERY
NO "FACSIMILE" OR NUMBER ON THE BACK



C. WALKER 2.50. NOV. 7. 1974

#11

THE "SPRINGFIELD" FORGE
NO "FACSIMILE" OR NUMBER ON THE BACK



C. WALKER. 2.50. NOV. 7. 1974

#13

THE "SPRINGFIELD" FORGERY.

NO "FACSIMILE" OR NUMBER ON THE BACK



C. W. B. K. - 250 - Nov. 7, 1974

#14

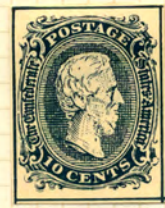
THE "SPRINGFIELD" FORGE

NO "FACSIMILE" OR NUMBER ON THE BACK

Facsimile
No. 1



BECKNT (1961) GERMAN PRODUCT
"FACSIMILE / NO. 1" ETC. ON BACKS



BECKNT (1962) GERMAN PRODUCT
"FACSIMILE / NO. 1" ETC. ON BACKS

ALL - C. W. WALSLEY
NOV. 7, 1974



CONFEDERATE "FACSIMILES"
 SET OF 14 - LOINED IN A SINGLE BLOCK
 ADVERTIZED AT \$1.00 PER SET ON WWL. NEW
 ORLEANS. LA. BY FRANK S. NICHOLS.
 1603 30TH AVE. GULFPORT. MISSISSIPPI.

ENVELOPE
 CONTAINING
 CONFEDERATE
 "FACSIMILE" SET
 FROM
 CLYDE JENNINGS
 (MISSISSIPPI)
 1961

1ST SET MOUNTED ABOVE

GIFT OF CLYDE JENNINGS
 OCT. 16, 1961



SET - CINDERELLA STAMP CLUB
AUCTION - MAR. 31, 1961 - \$1.10.

"FACSIMILE NO. 1" (NOS. 1-14)
PRINTED ON BACK OF EACH STAMP

MADE IN GERMANY (?)

3RD SET - FROM ENGLAND

CONFEDERATE "FACSIMILES"

ENVELOPE
CONTAINING
CONFEDERATE
"FACSIMILE" SET
FROM -
WYANT -
EUGENE, OREGON
1962

ENVELOPE
CONTAINING
CONFEDERATE
"FACSIMILE" SET
FROM -
CINDERELLA STAMP CLUB
ENGLAND
1961

2ND SET - ORIGINALLY IN
"PAGE" AS ABOVE - SEPARATED
AND MOUNTED INDIVIDUALLY ON
PAGES FOR EACH STAMP NUMBER;
"RECENT GERMAN PRODUCT"

3RD SET - MOUNTED ABOVE