

## Aberdeen, Mississippi

### Handstamped Envelopes

ABE-MS-E01 [IA] black PAID + 5 inside ABERDEEN / Mi. postmark

IA.	SEP 12, [1861]	(File Note)	DIXIE, WINTER, 1863 P
IA.	JAN 20, [1862]		" " "
IA.	REVAL. 10 (Ms)	DEC 27, [1861]	CYD
IA.	SEP 13, [1861]		SAB 3/78 P

# Abingdon, Virginia

## Reference

Abingdon Provisional CD 4/86 P

## Handstamped Envelopes

ABI-VA-E01 [?]\* black PAID / 2 / CENTS.

III. PAID / 2 / CENTS, DEC 13, 1861 CD 4/86 P

\* Not listed in the 1986 New Dietz Catalog.

ABI-VA-E02 [?]\* black PAID / 5 / CENTS.

IV	July 27, 1861	SA. + R. KAUF. "1/81
IV	Oct. 20, 1861 (200 strikes, orinca films,	Frankla "1/86 P
IV	JUL 22, 1861	Siegel 9/65 P
IV	JUL, 1861	MB 10/81 P
IV	SEP 4, 1861	MB 2/82 P
IV	AUG. 17, 1861	BAII 2/73 D
IV	Oct 15, 1861 (same, A KAUF 42)	BAII 5/76 P
IV	Oct. 22, 1861	F. FIELD 10/58 P
IV	SEP. 28, 1861	FOX 2/58
IV	JUL 11, 1861	FOX 6/57 P
IV	on 7 star Nat., July 22, 1861 (F7-7)	ME
IV	July 21, 1861	Hart Survey
IV	Oct 3, 1861	JUDS " "
IV	Oct. 1, 1861	" "
IV	Oct. 4, 1861	" "
IV	Oct. 15, 1861	Frankla "1/86 P
IV	+ Adhesive Jun 11, 1861	CD, Ant. 1966
IV	Nov 29, 1861	Siegel 6/86 P
IV	Oct 23, 1861	Apfelbaum 3/72 P

\* Not listed in the 1986 New Dietz Catalog.

ABI-VA-E02 [?]\* (continued)

<u>IV</u>	NOV 9, 1861	(VF, BAD, LT STAIN) 950 + 108 KAUF	12/87 P
<u>IV</u>	DEC 2, 1861		FOX 7/63 P
<u>IV</u>	SEP 24, 1861		FULLER 11/49 P
<u>IV</u>	SEP 24, 1861		" 10/50 P
<u>IV</u>	NOV 11, 1861		HARRIS 1/71 P
<u>IV</u>	OCT 15, 1861	350 Net R. KAUF # 2 P	
<u>IV</u>	OCT 11, 1861	(MORNING OVER) # 325 +	12/81 P
<u>IV</u>	SEP 01, 1861	(Reduced, Partial strike, # 325)	6/85 P
<u>IV</u>	JUL 22, 1861	ON PAT.	KELLETTER 2/56 P
<u>IV</u>	JUL —, 1861		" " P
<u>IV</u>	NOV 11, 1861	arr. in Harry 1/71	" " P
<u>IV</u>	SEP 2, 1861		HARRIS 1/71 P
<u>IV</u>	AUG 27, 1861		MULHART 4/60 P

\* Not listed in the 1986 New Dietz Catalog.

ABI-VA-E03 [?]\* black PAID / 10 / CENTS.

<u>V</u>	UNPAID # 11 AD, MAR 7, [1864]	CD 4/66 P
<u>V</u>	UNUSED	ADB 5/81 P

## Albany, Georgia

### References

Albany Georgia, Provisionals	CD 8-1, '63
Cont'd. Postmarked	CD "172

### Handstamped Envelopes

ALB-GA-E01 [II] blue-green 5 inside ALBANY GA / PAID postmark

II, Aug. 19, 1861	FOX 7/68 P
II, UNDER CGA #1, MAY 21, 1862	HAAR 11/50 P
II, Oct. 19, 1861	HAMLEN 5/76 P
II, Sep 1, 1861	" 10/75 P
II, MAR. 19, 1862	Q. KAUF. #5 P
II, Sep 7, 1861	" " #14 P
II, MAR. 16, 1862	LAMMIE 5/40 P
II, Aug. 8, 1861	2.44 4/62 P
II, Dec. 10, 1861	FRANK 7/62 P
II, Aug. 21, 1861	Q. LOWE 4/63 P HES
II, UNDER REG. ASSOC #2, MAR. 15, 1862	EVY 10/62 P
II, REVAL. TYPE IV 4/5, Dec. 30, 1861	HIND 11/106 P
II, JUN 15, 1861	DIETR P
II. USED UNDER REG. ASSOC (#2) MAR. 15, 1862	CD 1/63
II. USED UNDER REG. ASSOC (#1) MAY 21, 1862	CD 1/63
II. REVAL. with TY IV. 4/5, Dec. 30, 1861	CD 1/63
II (GREENISH-GRAVE) Aug 3, 1861	2.44 4/62 P
II, Sep 3, 1861	P
II, Aug. 8, 1861	FOX 3/59 P
II, Jan. 30, 1862	BAH 3/74 P
II, Aug. 19, 1861	BAH 5/76 P
II, Aug 20, 1861	CHARLIE 6/61 P
II, Dec 29, 1861	FOX 3/61 P

ALB-GA-E02 [III] blue-green 5 inside ALBANY GA<sup>A</sup> / PAID postmark

III. UNDER CSA #2, MAR 15, [1862] M.B.  
III, BKA, UNDER CSA #1, MAY 21, 1862 M.E.

ALB-GA-E03 [V] blue-green 10 inside ALBANY GA. / PAID postmark

V DEC 31, 1861 DOCKETING LAURENCE 5/63 P  
V, JAN 1, 1862 (FRONT) (D) FOX 7/72 HES

ALB-GA-E04 [IV] blue-green 10 / PAID inside ALBANY / Ga. postmark

IV. m - blue, SEP 17, 1861 FOX 1/63 P  
same LGS 1/63 P

## Anderson Court House, South Carolina

### Handstamped Envelopes

**AND-SC-E02 [IB]** black PAID / 5 inside ANDERSON C. H. / S. C. postmark

*IB., INSIDE TOWN MARK, - 2, - , FULLER 11/14 P*

**AND-SC-E03 [I]** black PAID / 10 (ms) inside ANDERSON C. H. / S. C. postmark

*{ I, 10 (ms) AUG 22, [1861] → Feltman 5/66 P  
I, 10 (ms) AUG 23, [1861] → Christie 6/61 P  
I, 10 (ms), NO VISIBLE COS LAUMAN 5/35 P  
I, NO RATE, INSIDE MARK, NE 20 " 5/40 P  
I, NO RATE, UNUSED (P) FOX 4/50 HOS*

## Athens, Georgia

### Reference

Athens, Georgia Provisionals	CD 7-12,	12/62
Athens, GA Postmasters Adv.	CD	1/73
" " " " CONT.	CD	3/73

### Adhesives

#### ATH-GA-A01 [AG-1a] 5c purple, Type I

Single on cover, Jan. 13, [1862]	Kauf 12/87D
Hor. pt., 1a + 1b, Oct. 30, [1861]	Fox 3/61D
Single on cover, Jan 30, [1862]	Fox 7/66D
" " " " Mar. 12, [1862]	Har. 11/50P
" " " " Feb. 4, [1862]	Harmon 7/6D
" " " " Sep. 28, [1861]	R. Kauf 6/82D
Hor. pt. 1a + 1b, Lucy Co. Eastgate	Charles 3/66D
Single on cover, Mar. 22, [1861]	L.S. 4/43P
Single on cover Jan 13, [1862]	Ward 10/39P
Hor. pt., 1a + 1b, Nov. 30, [1861]	SAB 3/76P
Single, on V26 Stan Die	1D) Fox 4/50 HES
Hor. pt., 1a + 1b, Nov. 21, [1861]	Har. pt. # 108

#### ATH-GA-A02 [AG-1b] 5c purple, Type II

Pair, Ty I+II on College cover, Jan 10, 1862	CD 12/62
Hor. strip of four, Oct 25, [1861]	CD 12/62
Single, on 3c Stan Die	Fox 3/61D
Hor. pt. on cover, Ty I+II, Oct. 14, 1861	P
Hor. pt. on cover, Ty I+II, Oct. 1, [1861]	Franklin 11/66D
Single " " " Oct. 21, [1861]	W. Fox 5/87D
Single on cover, Nov. 7, [1861]	Fox 3/59P
" " " " Dec. 7, [1861]	Harmon 10/80P
" " " " Jan. 16, [1862]	" " P
" " " " Dec. 20, [1861]	" 2/64P

**ATH-GA-A02 [AG-1b] (continued)**

HAMMEN 2/78 P  
HAM - DATE 10/47 P  
SAB 4/79 P

**ATH-GA-A03a [AG-1c]** 5c purple, vertical pair

Vert. page on cover, Jan. 6, (1862) CD 12/62  
 Vert. page on cover, Tete-Bache, Dec. 2, 1861 P  
 Vert. page, used, Mrs. Galt Gilchrist 6/576  
 Hor. page, on cover, Dec. 25, [1861] Har. "150 P  
 Vert. p. USED Har. 7/76 P

**ATH-GA-A04 [AG-2a]** 5c red, Type I

Single, on COVER, MAR. 28, (1862) CD 12/62 D  
Single, on " APR. 16, [1862]

**ATH-GA-A05 [AG-2b] 5c red, Type II**

single on cover, with collage C.C. (Athens, TY I) CD 12/62<sup>b</sup>



## Atlanta, Georgia

### References

*ment* Atlanta Provisionals CD 7-11, "1/62  
 > NOTICE: SOUTHERN CONFEDERACY, MAY 31, 1861 CD 5/71 19.45  
 by ATLANTA P.M. RE. H/S PROV. ENVELOPES  
 PMP ATLANTA, GA. CD 5/73  
 " " " (CONT.) CD 7/73  
 THIRD TYPE ATLANTA PROV. ENVELOPE SCOTT'S 5/55

### Handstamped Envelopes

ATL-GA-E01 [II] black PAID inside ATLANTA, GEO. postmark

II. with NURSERY C.C. CD "1/62 P  
 II. with COMM. MERCHANTS C.C. JAN, 1861 P

ATL-GA-E02 [III] black PAID / 2 inside ATLANTA, GEO. postmark

III. circular EX 10/53 P  
 III. NO COS, circular, NURSERY CC HAMMON 1/53 P  
 II, circular, (54.74) LGS 4/43 P

IV	Jun 28, 1861	(Harris) 3/90 P
IV	Nov 15, 1861	Frankola 12/87 P
IV	Nov 22, 1861	R. Kaut 2/82 P
IV	Nov 29, 1861 (Secret Photo)	" 1/84
IV	Jun 26, 1861	" Not Seen. 21 P
IV	Jul 27, 1861	" 4/86 P
IV	Oct 30, 1861	LSS 4/83 P
IV	Dec. 17, 1861 on Pat. (FBI-9)	" " P
IV	Dec. 1, 1861	Lazarus 4/84 P
IV	Oct 16, 1861	Winter 2/73 P
IV	Nov 16, 1861	SAB 10/79 P
IV	Jul 22, 1861 on Pat. (TF-1)	" " P
IV	on USG, Jan 3, 1861	(10) Robbins 12/85 Hes
IV	July 9, 1861	FUG 10/82 P
IV	Sep 21, 1861	Fex 7/63 P
IV	Oct 25, 1861	Fex 7/68 P
IV	Jul 24, 1861	Hammes 2/63 P
IV	Nov 20, 1861	" 10/75 P
IV	Jan 3, 1861	" " P
IV	Nov 18, 1861	" 1/71 P
IV	Sep 7, 1861	" 7/76 P
IV	Nov 20, 1861	" " P
IV	Oct 24, 1861	" " P
IV	Jun 26, 1861	Heiman 2/65 P
IV	Jun 3, 1861	R. Kaut #14
IV	Sep 5, 1861	" " #16
IV	Jun 17, 1861	" " 2/82 P

ATL-GA-E03 [IV] (continued)

<del>IV</del>	Oct 18, 1861	Dietz D
<del>IV</del>	Jul 27, 1861	Kaut. 8/88P
<del>IV</del>	Nov 8, 1861	FRABOLA 9/88P
<del>IV</del>	on Pat. (Ty. Fil-1) July 4, 1861	CD 12/82D
<del>IV</del>	AUG 2 (?) 1861	P
<del>IV</del>	JUN 24, 1861 (College Cover)	P
<del>IV</del>	Jul 18, 1861 (Fancy CC)	P
<del>IV</del>	Jul 9, 1861 (College Cover)	P
<del>IV</del>	JUN 24, 1861 (Hotel C.C.)	P
<del>IV</del>	Nov 9, 1861 (Merchants C.C.)	CSA 1642
<del>IV</del>	Jul 3, 1861	Siegel 2/87D
<del>IV</del>	Dec 4, 1861	Siegel 2/87D
<del>IV</del>	SEP 13, 1861	R. Kaut 3/87D
<del>IV</del>	Nov. 1, 1861	Siegel 5/87D
<del>IV</del>	Oct 11, 1861	FRABOLA 3/87D
<del>IV</del>	Nov. 18, 1861 (Fancy CC)	Fox 12/61P
<del>IV</del>	Oct 30, 1861	Fox 3/59D
<del>IV</del>	on Pat. (Fil-1) Jul 4, 1861	WEATHERLY D
<del>IV</del>	UNUSED	ADP 6/79D
<del>IV</del>	Nov. 9, 1861 (Williams & Remont)	BAH 4/73D
<del>IV</del>	Nov. 8, 1861	BAH 5/76D
<del>IV</del>	AUG 30, 1861	CHRISTIE 6/84D
<del>IV</del>	Dec 18, 1861	Fox 3/61D
<del>IV</del>	Nov 1, 1861	" 1/63P

ATL-GA-E03a [IV] black PAID / 5 inside ATLANTA GEO postmark revalued 10

~~IV~~ REVAL. with TY A TEN Nov. 7 1861 D

ATL-GA-E04 [IV] red PAID / 5 inside ATLANTA GEO postmark

~~IV~~ (Red) Jul 15, 1861 D

ATL-GA-E05 [VI] black PAID / 5 inside ATLANTA / Ga. postmark

<u>VI</u>	Jun 15, 1861	MCB
<u>VI</u>	Jun 15, 1861	SCOTT 5/55 P

ATL-GA-E06 [V] black PAID / 5 inside ATLANTA, GEO. postmark

<u>V</u>	used on ADAMS EXP. COVER	CD 11/62 P
<u>V</u>	AUG. 2, 1861 (ADAMS EXP CO)	P
<u>V</u>	July 21, 1861	CALL 11/72,
<u>V</u>	- 21, 1861	HANSEN 1/53 P
<u>V</u>	AUG. 20, 1861	R. KAUF 1/84 P

ATL-GA-E06a [V] black PAID / 5 inside ATLANTA, GEO. postmark revalued 10

<u>V</u>	REVAL 10 (TYOA) NOV. 8, 1861	CD 11/62 P
<u>V</u>	REVAL 10 (TYA)	FRANKA 3/62 P
<u>V</u>	REVAL 10 (TYA)	FOX 1/63 P

ATL-GA-E06b [V] black PAID / 5 inside ATLANTA, GEO. postmark used under general issue

<u>V</u>	used under reg. issue #1 (Dec. 2?)	CD 11/62 P
<u>V</u>	under reg. issue #1, Dec 28, [1861]	F. F. F. 1/60 P

ATL-GA-E07 [VII] black PAID / 10 inside ATLANTA / Ga. postmark

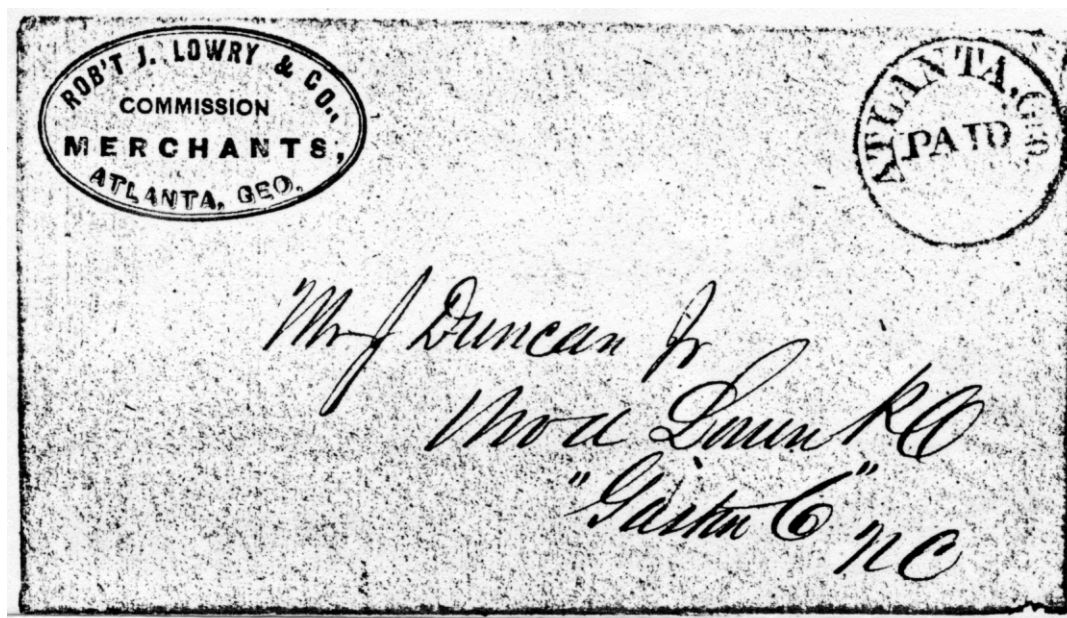
<u>VII</u>	Sept 29, 1861	CD 11/62 P
<u>VII</u>	Nov 5, 1861	AKC 3/74
<u>VII</u>	Jul. 9, 1861	SPB 3/78 P

ATL-GA-E08a [VIII] black PAID / 10 inside ATLANTA, GEO. postmark

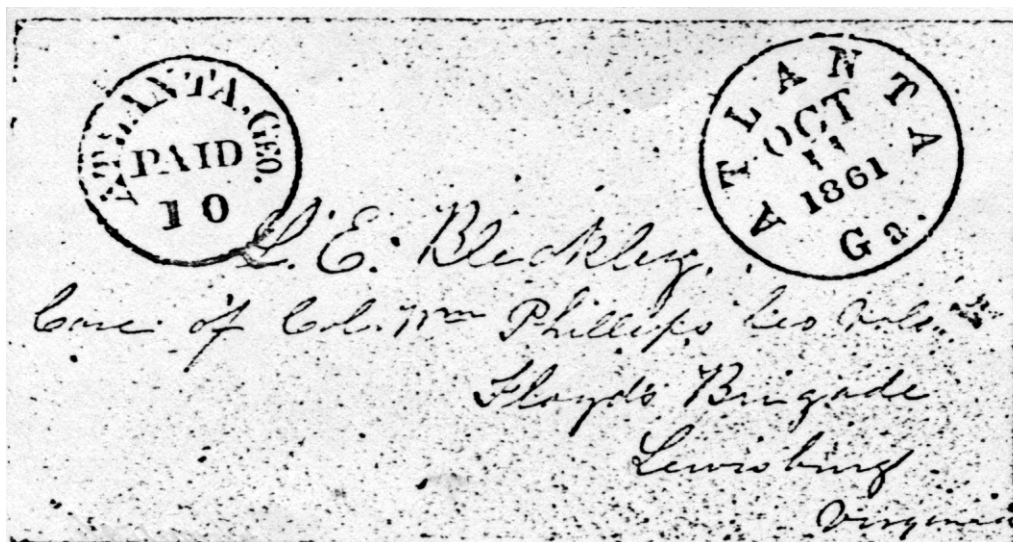
<u>VIII</u>	Nov. 29, 1861	R. KAUF 6/85 P
<u>VIII</u>	Oct. 11, 1861 (same, weekly)	CP 1/62
<u>VIII</u>	Aug. 18, 1861	P
<u>VIII</u>	Aug. 26 [1861] (NO YD in date)	P
<u>VIII</u>	Nov. 12, 1861	P
<u>VIII</u>	Nov. 5, 1861	KAUF 2/87 P
<u>VIII</u>	Oct. 20, 1861	Siegel 2/87 P
<u>VIII</u>	AUG. 12, 1861 (Fuerstent)	" " P
<u>VIII</u>	Oct. 16, 1861	Fox 12/61 P
<u>VIII</u>	Oct. 10, 1861	Fox 12/61 P
<u>VIII</u>	Sep. 11, 1861	R. KAUF 6/66 P
<u>VIII</u>	Nov. 12, 1861	Klein 12/46 P
<u>VIII</u>	Sep. 7, 1861	LAURENCE 1/40 P
<u>VIII</u>	Sep. 22, 1861	CGS 4/43 P
<u>VIII</u>	Nov. 21, 1861	FARLEY 5/86 P
<u>VIII</u>	Oct. 8, 1861	" " P
<u>VIII</u>	Sep. 10, 1861	R. Lowe 4/83 P ACS
<u>VIII</u>	Dec. 14, 1861	GH. # 7 P
<u>VIII</u>	Nov. 6, 1861	" " P
<u>VIII</u>	Aug. 14, 1861	David Hufford P
<u>VIII</u>	Sep. 21, 1861	Fox 12/61 P
<u>VIII</u>	Oct. 26, 1861	R. KAUF 6/87 P
<u>VIII</u>	Nov. 9, 1861	Siegel 1/62 P
<u>VIII</u>	— 14, 1861 (on back)	BALL 5/76 P
<u>VIII</u>	Oct. 7, 1861	CHASTON 6/84 P
<u>VIII</u>	Oct. 31, 1861	Fox 1/55 P
<u>VIII</u>	Sep. 29, 1861	Fox 6/57 P
<u>VIII</u>	Dec. 14, 1861	Fox 1/63 P
<u>VIII</u>	Sep. 12, 1861	R. KAUF # 14 P
<u>VIII</u>	Dec. 14, 1861	" 2/87 P
<u>VIII</u>	Oct. 1, 1861	" 1/84 P

ATL-GA-E08a [VIII] black PAID / 10 inside ATLANTA, GEO. postmark used under general issue

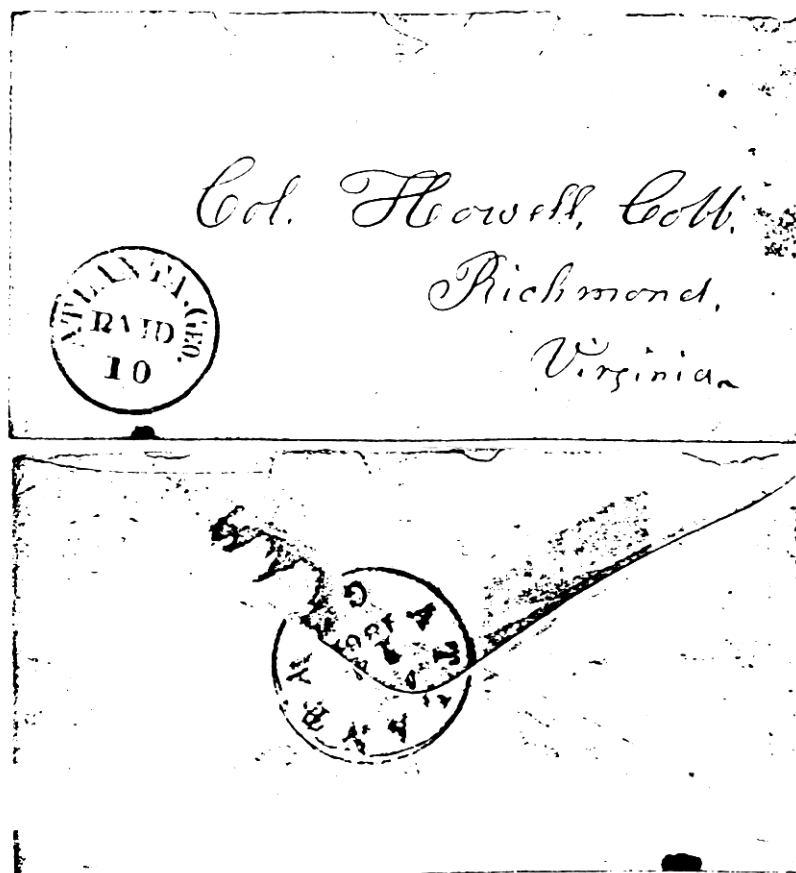
VIII, Under CSA #2, MAR 20, 1862 MCB  
VIII Under #2, (Stedmans) GIBERT 6/57 D  
VIII. Used, under Reg. Issue (#2) CB "1/62 D  
VIII Under CSA #2, MAR 20, 1862 IVY 10/62 D



ATL-GA-E01 (no rate)



ATL-GA-E08 (11 Oct 61)



ATL-GA-E08 (14 --- 61)

## Augusta, Georgia

### Reference

Augusta, Ga. DMP CD 9/73

### Handstamped Envelopes

None [IC]\* black PAID + 5 inside AUGUSTA / Ga. postmark

IC, Red (?) under CSA #1 P. KAUF 3/87 D

\* This is pre war marking, not a Confederate use.



## Austin, Mississippi

### Handstamped Envelope

**AUS-MS-E01 [AM-E1]** Red 5 surrounded by AUSTIN / MISS inside circle of "X's".  
Black "PAID" struck to left.

AM-EI	Dec 2, 1861	DIXIE, winter, 1863
SAME	5010 525-	HAMMON '53 P

## Austin, Texas

### Adhesives

**AUS-TX-A02 [AT-2]\*** 10c black on orange

Single on cover, Aug 23, 1862  
Spartan

SAB 3/78 P  
CASPARY

\* Actually black on buff

**AUS-TX-A02 [AT-3]\*** 10c black on buff

Single, tied to max, 1862 Lockington (FBI) & Kauf 2/62

\* AT-3 is not listed in the 1986 New Dietz Catalog. Number should be AT-2

### Handstamped Envelopes

**AUS-TX-E02 [III]** black PAID / 10 inside AUSTIN / TEX double circle postmark

III, Aug 10, 1862  
III, Jul 12, 1862  
III, Aug 19, 1862  
III, Jul 18, 1862  
III, Aug 8, 1862  
III, Aug 1-1862  
III, Sep 6, 1862  
III, Sep 19, 1862  
III, Aug 12, 1862  
III, Dec 2, 1862

Aug 2/78 P  
P  
SAB 5/76 P  
FOX 6/54 P  
HARMEN 11/50 P  
P. KAUF. #3  
" 9/85  
LAURENIE 5/35 P  
for storage 19. 233  
CASPARY P

## Autaugaville, Alabama

### Handstamped Envelopes

**AUT-AL-E01 [II]** black 5c in form of stamp

II.	Nov 27, [1861]	P
II.	Nov 28, [1861]	P
II.	Jan 10, [1862]	P
II.	Nov 28, [1861]	P
II,	Nov. 28 [1861]	SPB 3/78 P

**AUT-AL-E02 [III]** black PAID 5 in star inside circle containing postmaster's name

III.	at 8, [1861]	P
------	--------------	---

## Balcony Falls, Virginia

### Handstamped Envelopes

None\* [II] black/blue 10 inside a star within a circle with PAID / CS

II. FEB 6, [1862] → blue      BAH 3/7d  
II, AUG 31, (1864) -      "      Ecx 3/61 P

\* Not recognized as a provisional in the 2012 CSA Catalog.

# Baton Rouge, Louisiana

## Adhesives

### BAT-LA-A01 [BA-1] 2c green

Sing. on cover	PAAD	Full photo	CASPARY
" " "	Nov 30, 1861	" "	"
Sing. on cover	(FEBRUARY)		P
" " "	SEP 27, 1861		CEK P
" " "	MAY 19, [1862]		FRANK 11/1860
Stone			HARPER 11/50 P
Sing. on cover	AUG 5, 1861 (DROP)		HARPER 10/50 P
unused sing.			2/43 P
used sing.	PAAD cancel	Hand OH. # 110	
unused single			CASPARY P
Sing. on cover	Oct 27, 1861 (photo)		" P

### BAT-LA-A01a [BA-1a] 2c green, McCormick error

unused single	color photo	Sing. 5/67 P
Sing. on cover	Nov 30, 1861	P
unused single		HARPER 11/44 P
used single	PAAD cancel, Great photo	HARPER 10/50 P
Sing. on OH. Ltr.	MAY 19, [1862]	GH #37 P

### BAT-LA-A02 [BA-2] 5c green and carmine, Type I

single on cover	Nov. 01, 1861	CASPARY P
" " "	Dec. 22, 1861	" P
" " "	Nov. 22, 1861	" P
" " "	Oct. 10, 1861 (J.L. Hill)	" P
" " "	Dec. 18, 1861	" P
" " "	N.O. DC COS, Jan. 31, 1862	" P
" " "	Nov. 2, 1861	B. Green
" " "	Dec. 17, 1861	Howard Green

BAT-LA-A02 [BA-2] (continued)

Sing. on cover	Dec. 7, 1861	Siegel 5/67
Single " "	Aug. 20, 1861 (Pike)	Feldman 5/66
" " "	Dec. 19, [1861]	W. Fox 5/67
" " "	Nov. 18, 1861	B. Kauf. 11/67
" " "	July 25, 1861	Bail 11/72
" " "	Sept. 19, 1861	" " P
" " "	Oct. 7, 1861	CSA # 1704
" " "	Sept. 16, 1861	Kauf. 12/87
" " "	Dec. —, [1861] (Pike)	Fox 9/78
" " "	Oct. 1, 1861	Hamer 2/42
Two Singers on cover	Nov. 19, 1861 (Pike)	Hamer 11/50
Sing. on cover	Aug. 19, 1861	Hamer 10/50
" " "	Nov. 7, 1861 (Pike)	" 2/64
Sing. on cover	Oct. —, [1861] (Pike) (Pike)	Hamer 7/60
" " "	Sept. 16, 1861	Hamer 10/47
Hor. on cover	Oct. 3, 1861	Lamine 10/36
Sing. on cover	Sept. 26, 1861	" 11/40
Sing. , Nov. 18, 1861		B. Kauf. 11/67
Sing. on cover	Feb. 3, 1862	Ref. # 51
Used Sing.		Casman P
" " "		" P
" " ON Piece	Jan. 2, 1862	" P
" Vert Pl. Re joined		" P
" Hor. str. 3, Used	Dec. 14, 1861	" P
Used Hor. str. 5 Sing. on Piece		" P
Sing. on cover	Nov. 7, 1861 (J.A. Hall)	P
" " "	Oct. 10, 1861	P
" " "	Oct. —, 1861	P
" " "	Nov. 21, 1861 (J.A. Hall)	P
" " "	Aug. 29, 1861 (J.A. Hall)	P
" " "	Sept. 26, 1861	P
" " "	Sept. 23, 1861 (THEMER)	Franklin 11/66
" " "	Dec. 7, 1861	Kauf. 12/66
" " "	Aug. 25, 1861 (same, CSA 1692)	Siegel 5/87
" " "	Aug. 13, 1861	" " P

**BAT-LA-A02a [BA-2a] 5c carmine and green, Type I, McCormick error**

Sing. on cover, (Gro. A. Pike)	Nov 22, 1861	EX 3/6 P
" " " "	Aug. 29, 1861	GILBERT 6/57 P
USED Sing. on Piece	JAN. - [1862]	HAMMER 11/50 P
Sing. on cover, Feb. 20, [1862]		HAMMER 10/50 P
" " " "	Oct. 21, 1861 (Pike)	HAR-LUCK 6/58 P
" " " "	Feb 20, [1862]	SAB 3/78 P
" " " "	Dec. 26, 1861	CASPARY P
" " " "	Aug. 29, 1861	" P

**BAT-LA-A03 [BA-3] 5c carmine and green, Type II**

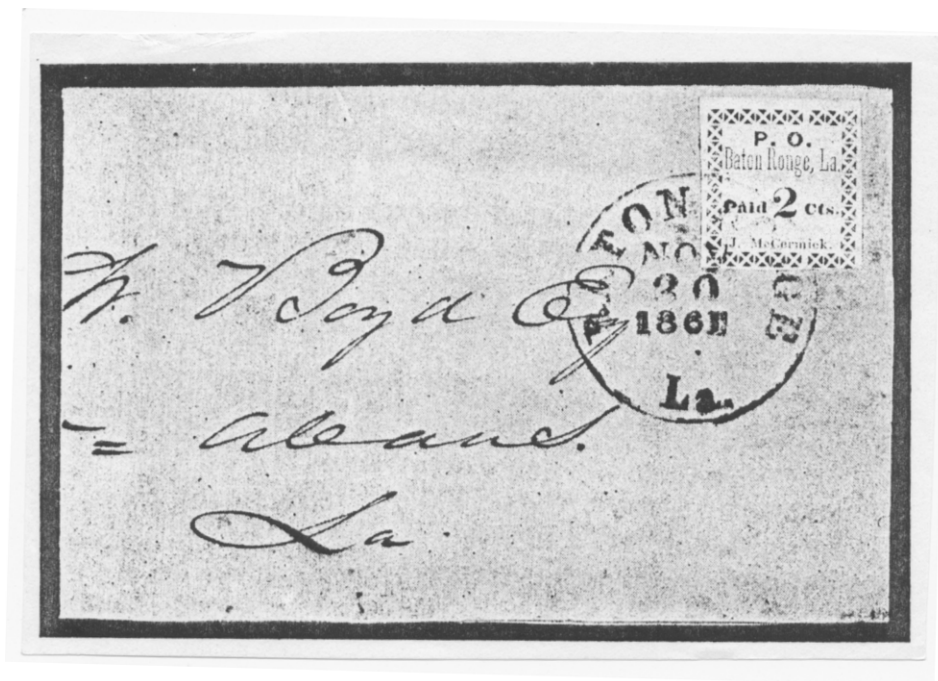
Sing. on cover (Mott)		CASPARY P
Sing. on cover Dec. - , 1861		CASPARY P
Sing. on cover Dec. 3, 1861		CASPARY P
Sing. on cover, Dec. 17, 1861	(J.R. Holt)	P
Sing. on cover, Dec. 3, 1861		GILBERT 6/57 P
Sing. on cover, Dec. 12, 1861		HAMMER 11/50 P
UNUSED single		" 7/76 P
Sing. on cover, Dec. 3, 1861		CHRISTIE 3/66 P
" " " " , Nov. 26, 1861		CHRISTIE 11/60 P
" " " " , Dec. 12, 1861		ISS 2/43 P
" " " " , Dec. 17, 1861	(CHRISTIAN 1/61)	SAB 3/78
UNUSED Sing.		CASPARY P
Sing. on cover (FAVROT)		CASPARY P

**BAT-LA-A03a [BA-3a] 5c carmine and green, Type II, McCormick error**

used single , Nov. 20, 1861	CASPARY P
-----------------------------	-----------

**BAT-LA-A04 [BA-4] 10c blue**

USED single, Oct 3, 1861 (5<sup>th</sup> note) G. LEAT 6/57 P  
 " " , OCT, — " HARVEN "/50 P  
 " " , Oct. 3, 1861 HAND M. # 113  
 " " , Oct. 3, 1861 (BANK note) ASPRAY P  
 Sing. on Exch., Dec. 7, 1861 " P



**BAT-LA-A01** (20 Nov 1861)



# Beaumont, Texas

## Adhesives

**BEA-TX-A01 [BE-1] 10c black on yellow**

July 2		
Sing. tied on cover by MARE.	DEC. 11 [1861]	P
Sing., not tied, MS CANAL, MS MAR		503 3/4 P
Sing. on cover, ANT-9, 1864		Hand M #114
Sing., uncanceled, on cover (NORAN)		CASARY P
Sing on cover, JUN. 11, — (WATSON)		" P

**BEA-TX-A02 [BE-2]** 10c black on pink

Sing. on cover, Jun 30, (1864) - LGS 1/43 P  
 same, Full photo SPB 3/78 P  
 Sing. on cover, Jul. 16, — (Great photo) Fanta 2/86 P  
 Sing. on cover, Jul. 2, — (An. Anel) 10) Sing. 3/68 HES  
 Sing. on cover, Jun. 18, — (Hand OH. # 115  
 Used single, Ms. Anel, CASARY P  
 unused single on cover " P  
 single on cover, Ms. Anel, Dec. 18, — " P  
 Sing. on cover, JUL 5, [1861] SAIL 5/76 P  
 Sing. on cover, no mark, June 25 FOX 1/55 P  
 Used sing, Ms. Anel (photo) GREAT 6/57 P  
 Sing. on cover no mark, June 25 (MS) HANSEN 1/50 P  
 Sing. on cover, Jul. 2, [1861] → " " P  
 " " " " Jul — [1861] → " 10/75 P  
 " " " " Ms. Anel, Jun 18 (MS) " 4/64 P  
 Used sing, Ms. Anel, Great photo " 7/76 P  
 Sing. on cover, Jul. 2, [1861] → (Full photo) " 7/76 P  
 Sing. on cover, Oct 25, [1862] → LGS 4/43 P

BEA-TX-A03 [BE-3] 10c black on yellow Type II

CAVEAT EMPTOR, II	C.P. 3/70
Single on cover, Jul 16, —	Dietz Color Set.
Single on cover. no color, (duncan)	For Harkle 19. 106
Space (Full Photo)	Cassidy R

## Bluffton, South Carolina

### Handstamped Envelopes

BLU-SC-E01 [IB] black PAID / 5 inside BLUFFTON / SO. CA. postmark

I + O	oct 8, [1961]	P
SAME		LAURENCE 5/35 P

## Bridgeville, Alabama

### Adhesive

BRI-AL-A01 [BR-1] 5c black pair

*16c. pr. on cover, vol. 31, —*

*SIB 3/28P*

## Camden, South Carolina

### Handstamped Envelopes

**CAM-SC-E04\*** [III] black PAID / 10 in circle

II, UNUSED, MANUFACTURED LOT 17 KAUF 6/73 NO PHOTO

\* Provisional only when unused or used under a general issue.

**CAM-SC-E03a\*** [III] black PAID / 10 in circle used under general issue

III, UNDER NO. # 7 #16, KAUF 6/73 P  
III, " " JAN. 16 P KAUF 9/81 P

\* Provisional only when unused or used under a general issue.

## Canton, Mississippi

### Handstamped Envelopes

CAN-MS-E01 [II] black PAID / 5 outside star within circle

II.	JUN 5, 1861	(Lot 1004)	Siegel 5/74
II.	JUL 2, [1861]	(CARROLL HAY)	BAIL 6/77
II.	JUL 2, [1861]	(E. N. DAVIS)	Phillips
II.	JUL 4, [1861]		FOX 11/52
II.	JUL 24, [1861]		CEK
II.	AUG 8, [1861]		KAUF 6/81
II.	AUG 17, [1861]		Siegel 3/79
II.	AUG 26, [1861]		Hart
II.	AUG 28, [1861]		Phillips
II.	JAN 9, [1862]		WINTER 2/73
II.	JAN 13, [1862]		Hart
II.	JAN 15, [1862]		HAMMER 5/76
II.	JAN 17, [1862]		Siegel 4/83
II.	MAR 1, [1862]		KRESSMAN
II.	OCT 11, 1861		P
II.	JUL 25, 1861		" " P
II.	DEC. 18, 1861		KAUF 12/87D
II.	NO COS. to CARROLL HAY		HAMMER 10/88D
II.	AUG 26, 1861		LCS 4/43P
II.	AUG 8, 1861		LAROUS 6/66P
II.	NOV. 15, 1861		WALL 10/39D
II.	AUG 31, [1861]		LCS 4/43P
II.	SEP 13, [1861]		R. KAUF 2/82
II.	SEP 20, [1861]		FOX 1/63
II.	OCT 1, 1861	(File Note)	Hart
II.	OCT 8, [1861]		Stolow 6/63

CAN-MS-E01 [II] (continued)

II.	Oct. 26, [1861]	Siegel 5/76
II.	Nov. 4, [1861]	Fox 7/65
II.	Nov. 6, [1861]	Siegel 4/63
II.	Nov. 8, [1861]	Siegel 10/58
II.	Nov. 15, [1861]	Park's
II.	Dec. 8, [1861]	Siegel 5/76
II.	Dec. 18, [1861]	Siegel 5/76
II.	Jan. 7, 1862	Siegel 5/83

CAN-MS-E01b [IIa] black PAID / 5 outside star within circle revalued 10

II.	REVAL. 10 (45) Jul. 22, [1861]
-----	--------------------------------

CAN-MS-E01x [IIx] black PAID / 5 outside star within circle revalued 10 used from another town

II.	+ 5 (45) Livingston, Miss. Sep. 23, [1861] Dixie, winter 83
same,	not recognized as demand Siegel 5/870

None\* [V] black 10 / PAID inside CANTON / MI. postmark

II.	not 10, [1862]	P
II.	same	P. KAUF 11/860

\* Not recognized as a provisional in the 2012 CSA Catalog.

## Cartersville, Georgia

### Handstamped Envelopes

CAR-GA-E01 [III] red PAID inside CARTERSVILLE / Ga. postmark

III. Red, #379 1V4 11/82 #



## Chapel Hill, North Carolina

### Handstamped Envelopes

CHA-NC-E01 [IB] black PAID 5 + CHAPEL HILL / N. C postmark

I + B	SEP 19, [1861]	CP "1/84 P
I + B	JAN 27, [1862] (PAT. F10-3)	P
I + B	JAN 25 (?) [1862] (PAT.)	D
I + B	SEP 26, [1861]	CSA # 1666
I + B	JAN 26, [1862] ON PAT. (F10-2)	BALL "1/50 P

NOTE: PERIOD AFTER "C" MISSING  
(SEP 26, 1861). Left leg of "A" is  
light & shows break at 6th cross  
bar of "H" very thin. HOR. LINE  
ON FIRST TAB L.S. IS THIN.

## Charleston, South Carolina

### References

A CONFED. FORD OF FIRST IMPORTANCE (CH-EB) NSA VI-6  
 Charleston, S.C. PHD CD 3/80  
 Last day of Sale, Dec. 6, 1861 CD 9/82 pg 52

### Adhesives

CHA-SC-A01 [CH-1] 5c blue

Sing. on cover, Oct. 23, 1861	H.M. - Lake 10/47 P
" " " Oct 6, 1861	" " 10/49 P
" " " Nov. 4, 1861	" " 10/50 P
" " " Sep 12, 1861	" " 6/58 P
" " " Sep 6, 1861, uncanceled	Heiman 2/65 P
" " " Sep 16, 1861	" " P
" " " Sep 13, 1861	R. KAUF 6/82 P
" " " Oct 1, 1861	CHAISTRE 3/80 P
" " " Sep 7, 1861	R. KAUF 11/81 P
" " " Nov. 25, 1861	L.S.S. 11/83 P
Half pt on cover, Sep. 21, 1861	Pe/ander 4/52 P
Sing on cover, Dec. 6, 1861	" 9/58 P
" " " Oct. 1, 1861	SAB 4/79 P
Sing. on cover, Oct. 15, 1861	Fox 3/66 P
" " Sep 13, 1861	" 3/59 P
" " Dec. 5, 1861	" " P

CHA-SC-A01 [CH-1] (continued)

Sing. on cover, Oct 22, 1861	Ball 3/24
" " " Nov 5, 1861	" "
" " " Nov 2, 1861	Kauf 10/87D
" " " Oct 11, 1861	Ball 5/76D
" " " Nov 7, 1861	Christies 6/84D
" " " Oct 27, 1861	Fox 10/53D
" " " Cancelled due to 10 (Turn Hall)	Fox 6/44D
" " " Jun 19, 1862	" " P
" " " Sep 17, 1861	Fox 2/58D
" " " Oct 10, 1861	Kauf 12/87D
" " " Jun 29, 1861	Fox 3/61D
Har. Mar., Nov 2, 1861	Fox 3/61D
Sing. on cover, Sep 28, 1861	Fox 1/63D
Two sing. on cover, Oct 27, 1861	Fulton 1/49D
Har. Mar., unused	F. Hart 6/57D
Sing. on cover, Nov 1, 1861	Harmon 1/53D
" " " Jun 30, [1861]	Harmon 5/52D
" " " Sep 1, [1861]	" " P
" " " Oct 7, 1861	Har. Lake 5/43D
" " " Nov 14, 1861	Harmon 1/50D
" " " Sep 24, 1861	" 10/75D
" " " Oct 5, 1861	" " D
" " " Nov 6, 1861 (OC DRK)	" " P
" " " Feb 8, 1861 (OC " )	" 4/64D
" " " Oct 9, 1861	" 1/71D
Har. Mar., unused	" 7/76D

CHA-SC-A01 [CH-1] (continued)

Sing on Can, Nov. 14, 1861	Frakla 7/61
Sing. on Can, Nov 12, 1861	Frakla 3/66D
Sing. on Can, Oct. 14, 1861	Frakla 1/61D
Sing. on Can, Nov. 28, 1861	SAB 10/79D
Sing. on sing. off envelope, Sep 11, 1861	P
Two sing, Sep. 25, 1861	P
Sing. on cover, Oct. 29, [1861]	Frakla 11/61P
" " " , Nov 24, 1861	R. KAUF. 3/87D
Sing. on stamp etc, Jan. 16, [1861]	Frakla 11/61P
Sing. on cover, Oct. 6, 1861	R. KAUF. 2/87D
Sing., used with Aug issue #6	Frakla 8/87D
Sing. on cover, Dec 24, [1861]	Bail 9/73D
Sing. on cover, Jan 23, [1862]	FOX 7/68P

Printed Envelopes

CHA-SC-E01 [CH-E1] 5c blue on white

Aug 21, 1861	P
Aug 26, 1861 (Hagood)	P
Aug 22, 1861	P
Sep 23, 1861	Frakla 8/87D
Oct. 10, 1861	" " P
Oct. 7, 1861	HAAMEA 11/56P
Sep. 6, 1861	HAAMEA 5/76
Oct 3, 1861	" 10/75P
Oct 10, 1861	" 4/64D
Sep. 9, 1861	FOX 2/61D
Sep 3, 1861	APB 8/62P
Aug 23, 1861	SAB 10/78D
Sep. 6, 1861 Great Ache	Frakla 2/66D
Sep. 16, 1861	" 3/66D
Aug 28, 1861	" " P
Nov 12, 1861	KAUF 8/68P
Sep 17, 1861	J.R. Hill
Oct 4, 1861	" "

CHA-SC-E01 [CH-E3] 5c blue on orange

ENTIRE, SEP 6, 1861  
 " , SEP 25, [1861]  
 " , DEC. 22, 1861  
 " , SEP 1, [1861]  
 " , OCT 3, 1861

BAII 3/74  
 FEX 7/68P  
 HAMMER 10/50  
 " 1/71P  
 FA 46A 3/68P

CHA-SC-E01 [CH-E2] 5c blue on amber

ENTIRE, SEP 5, 1861  
 " , OCT 18, 1861  
 " , SEP 4, 1861  
 " , SEP 29, 1861  
 " , NOV 2, 1861

BAII 11/72P  
 FEX 5/59P  
 FEX 1/63P  
 HAMMER 10/50  
 " " P

CHA-SC-E05 [CH-E4] 5c blue on bluff

SEP 6, 1861  
 AUG 16, [1861]  
 SEP 26, 1861  
 SEP 23, 1861  
 AUG 30, 1861  
 AUG 20, 1861, + MAR 15 (C)  
 SEP 8, 1861

FEX 6/56P  
 FULLER 11/65P  
 HAMMER 4/64P  
 LSS 4/43P  
 SDB 10/74P  
 FEX 12/61P  
 FEX 12/61P

**CHA-SC-E01 [CH-E5] 5c blue on bluish**

Oct 23, 1861

Sep 23, 1861

Sep 26, 1861

Sep 23, 1861

Sep 18, 1861

Dec. 25, 1861

Oct. 10, 1861

Call 5/26

Fex 1/55 D

Fex 10/53 D

Fex 3/61 D

Fex 1/63 D

Hammer 11/5 D

" 1/71 D

**CHA-SC-E02 [CH-E6] 10c blue on dark orange**

blue on dark orange, July 11, (1862)

NSD VI-6 D

**Unknown [CH-E?]**

plus CSA #6 & due 5/ars), Sep 9 [1862] → Ann 10/60 D

**Handstamped Envelopes**

**None\* [V] 10c black (palm tree design)**

V. July 11, [1862]

Fulton 11/09

\* Not recognized as a provisional in the 2012 CSA Catalog.

**None [Unk Type] 10c**

The Charleston Nov 10c Handstamped NSD VII-6

## Charlottesville, Virginia

### Handstamped Envelopes

CHA-VA-E01 [IA] black PAID 5 with control initials

*IA, blue, signed was as R (ms) BH/ 5/76*

## Chattanooga, Tennessee

### Handstamped Envelopes

CHA-TN-E01 [IV] black PAID / 2 inside CHATTANOOGA / TEN postmark

<u>IV</u>	Oct 13, 1861	P
	same	SP I-3
<u>IV</u>	Oct 21, 1861	M.E.
	same	LAURENCE 5/55 P

CHA-TN-E02 [V] black PAID 5 inside CHATTANOOGA / TEN postmark

<u>V</u>	Aug. 1, 1861	P
<u>V</u>	Oct 6, 1861	P
	same	(HARTIG) 3/87 P
<u>V</u>	Jul. 17, 1861	M.E.
<u>V</u>	SEP - , [1861]	HAMMON 2/63 P
<u>V</u>	Jul. 23, [1861]	P. KAUF 4/86 P
<u>V</u>	Jul. 9, 1861	FRADOLA 5/88 P



## Christiansburg, Virginia

### Handstamped Envelopes

**CHR-VA-E02 [CR-E1]\*** 5c blue on white

CR-E1	Nov 7, 1861	Siegel 7/86 P
CR-E1 (blue on white)	SEP 12, [1861]	GA 11 3/94
CR-E1	SEP 16, [1861]	FOX 10/53
CR-E1, blue	SEP 14, [1861]	ME
CR-E1, blue on white	AUG 13, [1861]	A. KAUF. 6/90
CR-E1, " " "	Oct 5, [1861]	SAB 7/78 P

**CHR-VA-E02 [CR-E5]\*** 5c blue on orange

entire	JUL —, [1861]	KELCHER 11/55 P
--------	---------------	-----------------

**CHR-VA-E02 [CR-E7]\*** 5c blue on manila

entire	Dec. 2, —	SAB 7/78 P
--------	-----------	------------

\* These were listed as printed envelopes in the 1986 *New Dietz Catalog*. Evidence shows they were actually handstamped and are listed as such in the 2012 *CSA Catalog*.

## Clarksville, Texas

### Handstamped Envelopes

CLA-TX-E01a [II] black PAID / 10 in circle

*II, under CSA Reg issue # 7 (2) FEB 6/54 P  
1940/40 (C) under # 7 (2), Vol 18, — Alice Lee White*

## Colaparchee, Georgia

### Reference

Colaparchee, Ga. PMP

CD 9/73

### Handstamped Envelopes

COE-GA-E01 [I] black PAID / 5 (ms) in circle

I, 5 (ms) UNRECOGNIZED, used at SAVANNAH, GA  
with Post # 7 C.A. Vol 4, No. 5, 5/59 D  
Colaparchee, Ga. PMP CD 9/73

# Columbia, South Carolina

## Handstamped Envelopes

COL-SC-E01 [IV] blue 5 in double oval with COLUMBIA S. C. / PAID

IV	blue	NO COS		Ex 3/61 P
IV	blue	Oct 13, [1861]		" 7/63 D
IV	blue	SEP. 19, [1861]		HANNA 2/63 D
IV	blue	Oct 10, [1861]		" 5/76
IV	"	Oct 18, [1861]		" 10/75 D
IV	"	Dec. 27, [1861]		" " P
IV	"	NO COS		" " P
IV	"	Oct. 24, [1861]		" 4/64 D
IV	"	Nov. 5, [1861]		" 1/71 P
IV	"	Dec. 27, [1861]		" 7/76 D
IV	"	Oct 8, [1861]	Full photo	P. KAUF. #11
IV	"	Dec. 7, [1861]		" 2/82 D
IV	"	Dec. 4, [1861]		" 6/66 D
IV	blue	Aug. 31, [1861]		LAMAR 6/66 D
IV	blue	Nov 1, [1861]		P. KAUF. 4/81 P
IV	blue	Nov. 8, [1861]		SPB 3/78 P
IV	blue	Dec. 18, [1861]		" " P
IV	"	Dec. 15, [1861]		P. Lane 4/83 P Aes
IV	blue	Nov. 14, [1861]		H McDowell
IV	blue	SEP. 3, [1861]		" "
IV	blue	Dec. 16, [1861]		" "
IV	blue	Nov. 28, [1861]		" "
IV	blue	Nov. 21, [1861]		Frajola 3/88 P
IV		Oct 21, [1861]		CHILMAN 12/38 P
IV		SEP. 9, [1861]		P
IV		SEP. 17, [1861]		P
IV		Dec 15, [1861]		Frajola 1/88 D

COL-SC-E01 [IV] (continued)

<u>IV</u>	9 Sep, [1861]	FOX 12/61 P
<u>IV</u>	Aug 20, [1861]	" " P
<u>IV</u>	Oct 21 [1861] (color)?	OHLMAN 12/35 P
<u>IV</u>	SEP 20, [1861], blue	BAIL 5/76 P
<u>IV</u>	SEP 1 [1861]	HARMER 10/75 P
<u>IV</u>	SEP 24, [1861], blue	H. McDOWELL
<u>IV</u>	blue, Feb 23, [1862]	FRANKA 3/88 P
<u>IV</u>	blue, Sep 2, [1861]	R KAUF 5/88 P
<u>IV</u>	9 Sep, [1861]	FOX 12/61 P
<u>IV</u>	13 DEC, [1861]	" P
<u>IV</u>	blue, DEC. 12, [1861]	" 3/59 P
<u>IV</u>	blue, Dec. 5, [1861]	104 12/85 P
<u>IV</u>	blue, Nov 4, (1861)	AAB 2/82 P
<u>IV</u>	blue, Sep 20, [1861]	BAIL 5/76 P
<u>IV</u>	blue, Sep 24, [1861]	CHARLES 6/61 P
<u>IV</u>	blue, Sep 19, [1861]	FOX 2/58 P
<u>IV</u>	blue, Oct 30, [1861]	KAUF 12/67 P

COL-SC-E01a [IV] blue 5 in double oval with COLUMBIA S. C. / PAID with "PAID"

IV, + PAID (TY I) Oct 29, [1861] P

COL-SC-E01c [IV] blue 5 in double oval with COLUMBIA S. C. / PAID with "PAID" and "10"

<u>IV</u>	blue, "10" over 5 ALL PAID, Dec 19, [1861]	H. McDowell
<u>IV</u>	REVAL "10" TYR IH	KAUF. 10/88 P
<u>IV</u>	REVAL "10" TY IH, DEC 13, [1861]	P
<u>IV</u>	REVAL "10" TY IH, DEC 19, [1861]	P

COL-SC-E01x [IV] blue 5 in double oval with COLUMBIA S. C. / PAID with "PAID", "10" and "10"

IV, REVAL. "10" TYR IH (blue) with add  
strike TY IG (blue) KAUF. 10/88 P



COL-SC-E013 [IIH] PAID (circle) 10 (small) with Seal

IIH. OV SEAH ON REV. JUL. 16 [1861] P

## Columbia, Tennessee

### Handstamped Envelopes

COL-TN-E01 [III] red PAID / 5 inside COLUMBIA / Ten. postmark

(Red)  
II. oct. 19, [1861]  
same  
II, oct. 19, (1861)  
II. Red, oct. 19, [1861]

Heiman 2/65 P  
L&S 4/43 P  
NASSAU 2/38  
P



# Columbus, Georgia

## Reference

Columbus, Ga.

notice in Columbus Daily Times Re. <sup>19.58</sup> ~~PAID~~ CP 5/12

## Handstamped Envelopes

COL-GA-E01 [II] blue PAID / 5 inside COLUMBUS / G<sup>a</sup>

II	AUG. 17, [1861]	P
II	(wvett & 300)	P
II	(Flag of TRUCE)	P
II	JUN. 10, [1861]	FRANKLA 11/86 P
II	JAN. 28, [1862] (Flag of TRUCE)	KAUF 10/86 P
II	Nov 28, [1861]	FRANKLA 3/87 P
II	NO PAID (CITY MILLS) CC	NOB 10/86
II	Dec 31, [1861]	BAIL 3/76 P
II	JUN 21, [1861]	BAIL 5/76 P
II	Nov 23, [1861]	BAIL 5/76 P
II	AUG 9, [1861]	" " P
II	JUL 8, [1861]	FOX 3/61 P
II	Nov 23, [1861]	FOX 7/63 P
II	OCT 3, [1861]	FOX 7/68 P
II	JUN 10, [1861]	LAUREN 11/71 P
II	Nov 16, [1861]	" 7/76 P
II	Dec 6, [1861]	R KAUF #2
II	Nov 23, [1861]	FRANKLA 12/87 P
II	OCT 3, [1861]	R KAUF 11/81 P
II	JUN 10, [1861]	LAUREN 5/66 P
II	OCT 14, [1861] + OVE/51C	LSS 4/63
II	OCT 3, [1861]	GH. #27 P

COL-GA-E01b [II] blue PAID / 5 inside COLUMBUS / G<sup>a</sup> with "DUE / 5"

II Oct. 14, [1861] + DUE/5/c) 235 4/43

COL-GA-E02 [III] red PAID / 10 inside COLUMBUS / G<sup>a</sup>

III Oct - , (a. Keton)

III

III Oct 22, [1861] →

III Nov 20, [1861] →

III , Nov 1<sup>st</sup>, (1861)

R. KAUF 6/87

ADP 5/76 P

HANMER 1/71 P

HAN-ROCK 6/58 P

R. KAUF 6/81 P