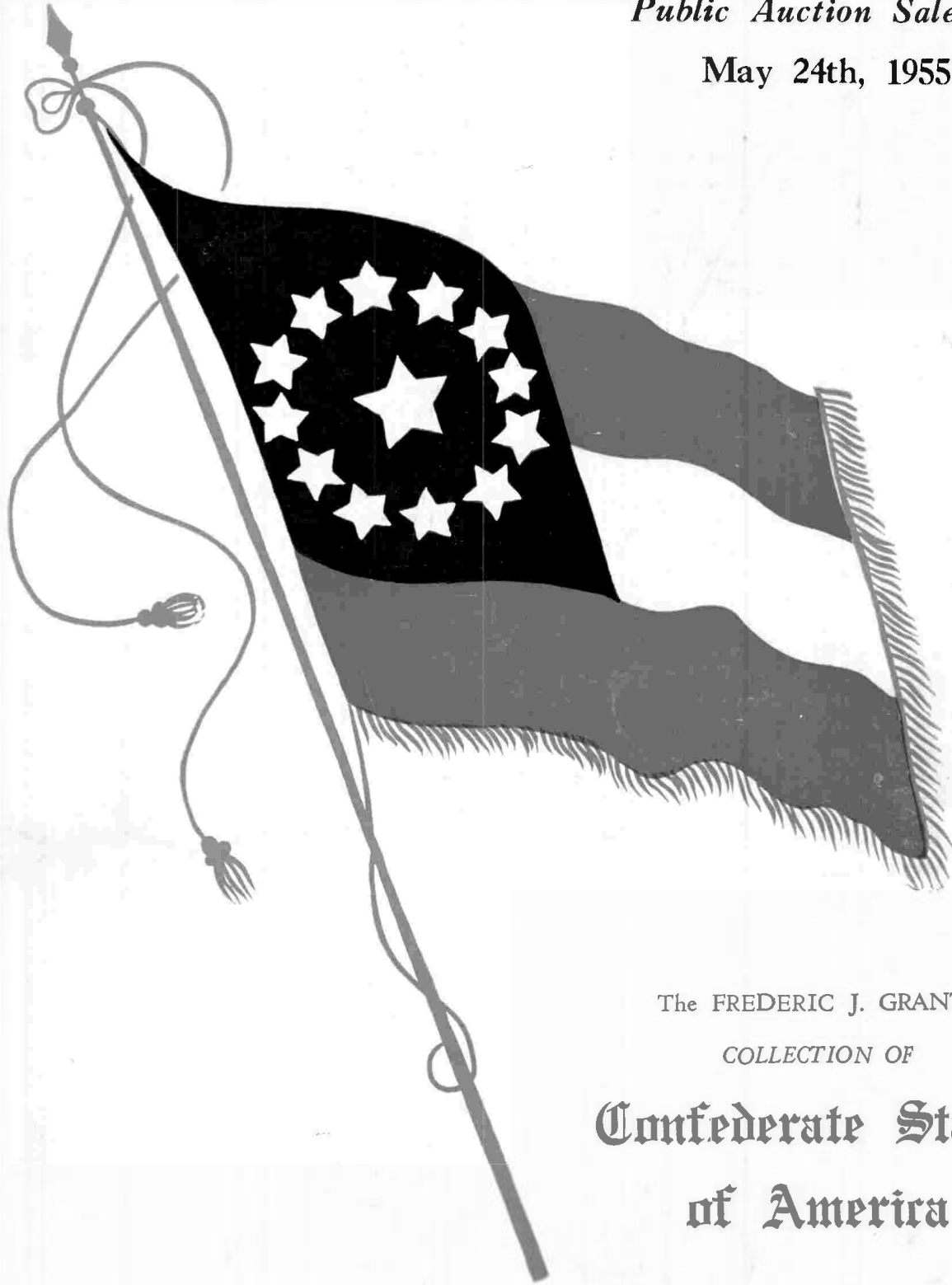


Public Auction Sale

May 24th, 1955



The FREDERIC J. GRANT

COLLECTION OF

**Confederate States
of America**

JOHN A. FOX

TERMS OF SALE

1. All lots are sold to the highest bidder at a slight advance over the second highest bid.
2. Terms of sale are strictly cash and all lots must be paid for within ten days of receipt unless arrangements are made prior to the sale for deferred payment.
3. Persons known to me will have their lots forwarded immediately. All others will be notified and the lots will be forwarded upon receipt in full.
4. All bids are per lot as numbered in the catalogue. The right is reserved to withdraw any lot prior to sale, to divide a lot, or to group two or more lots.
5. The highest bidder shall prevail. Should any dispute arise between bidders the decision of the auctioneer as to the successful bidder and the reoffering or resale of the lot under dispute shall rest entirely on the judgement of the auctioneer. Title shall remain in John A. Fox until payment is received and delivery made to the buyer. The auctioneer shall regulate the bidding and reserves the right to refuse any bid believed by him not to be made in good faith.
6. Each lot is sold as genuine but when in the opinion of any competent authority acceptable to John A. Fox, the lot is declared otherwise, the purchase price will be refunded in full, provided that such is received by John A. Fox, within a period of twenty-one days from the date of the auction.
7. Any lot, description of which is incorrect, is returnable only within three days of receipt. All disputed lots must be returned intact, as received. Lots containing five or more stamps are not returnable at any time. No lots may be returned by purchasers who have had an opportunity to examine them before the sale, or who have an agent represent them at the sale. Stamps described as having defects are not returnable on account of their condition. Stamps cannot be returned on account of centering when such stamps are illustrated.
8. Scott's Standard Catalogue and Sanabria's Air Mail Catalogue have been used to classify the stamps and covers.
9. Original gum is not to be expected on 19th Century stamps unless so stated.

DEFINITION OF TERMS

Extremely Fine and Superb — Excellent condition, mathematically centered and truly all that can be desired in stamp or cover.

Very Fine — Perfect in every respect but not as well centered as an extremely fine item.

Fine — A sound copy not damaged and perforations clear of design.

Good — A sound copy but the perforations may cut into design.

Damaged — All stamps classified as damaged have their defects accurately described.

ABBREVIATIONS USED

★ —Mint
○ —Used
▣ —Block
⊠ —Cover

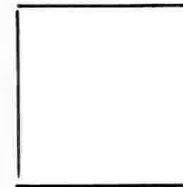
O. G.—Original Gum
N. H.—Never Hinged
S. E.—Straight Edge
T. B.—Top or Bottom
L. R.—Left or Right

O. C.—Off Center
V. F.—Very Fine
F. —Fine
△.—On piece
E.—Essay
P.—Proof

JOHN A. FOX, Licensed Auctioneer

Public Auction Sale #138

JOHN A. FOX
173 Tulip Avenue
Floral Park, N. Y.



Please purchase for me at the above sale to be held **Tuesday, May 24th, 1955**, the lots enumerated below. The prices listed are my limit on each lot and I understand that you will purchase for me as much below this price as possible. I have read the terms of sale carefully and agree to same.

References:

Very truly yours,

.....

.....

.....

Lot	Bid	Lot	Bid	Lot	Bid

List of Prices Realized Free to all Bidders.

Public Auction Sale



**CONFEDERATE STATES
of AMERICA**

STAMPS AND COVERS



TUESDAY, MAY 24th, 1955

2:00 P. M.

AT OUR NEW YORK OFFICE

116 NASSAU STREET

Room 902

LOTS ON VIEW AT 116 NASSAU ST.

Room 902

WEDNESDAY, MAY 18th — 11 A. M. — 3 P. M.

ALL OTHER TIMES

at FLORAL PARK — TO DATE OF SALE

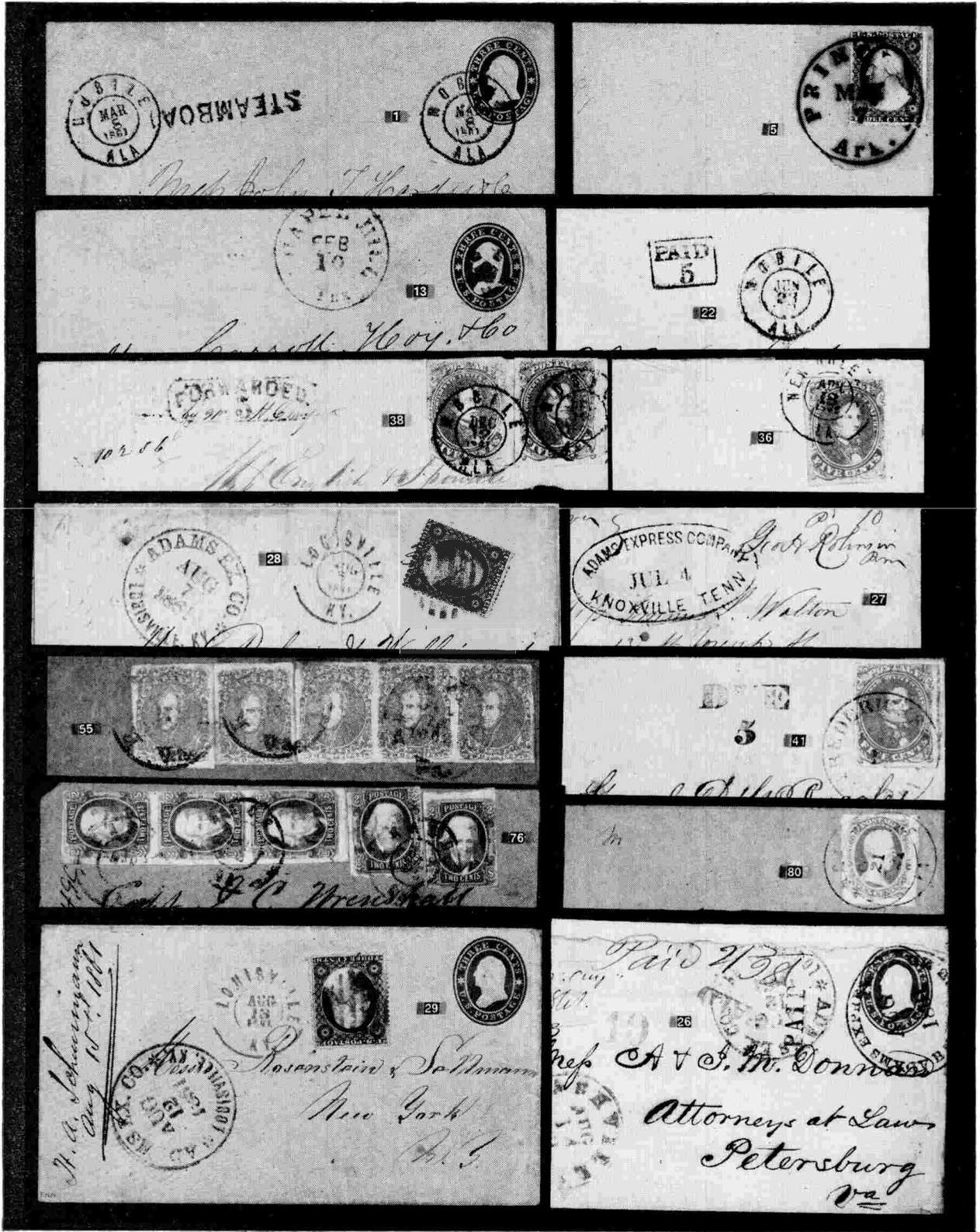
JOHN A. FOX

173 TULIP AVENUE

New York Phone: BA 7-4943

FLORAL PARK, N. Y.

Floral Park Phone: FL 4-4636



JOHN A. FOX

MAY 24th, 1955

CATALOGUE

TUESDAY, MAY 24th, 1955 — 2 P. M.

CONFEDERATE STATES OF AMERICA

USE OF UNITED STATES STAMPS AND ENVELOPES IN THE SOUTHERN STATES AFTER SECESSION

The United States continued its postal service in the South after secession until June 1, 1861. United States stamps and stamped envelopes were used, and mail was carried in the seceded States, between the South and the North and abroad. On June 1, 1861 the Confederacy put its rates into effect, and use of its handstamps or stamps was required. United States stamps then became invalid, and interchange of mail ended. Mail was sent by private express Companies for a short while, but thereafter the only mail between South and North was delivered via Flag of Truce.

- 1 **Mobile, Ala. Mar. 8, 1861 tied 3c star die entire, straight line Steamboat,** immaculate Cover. The port blockades were not decreed until April, Extremely fine (Photo) (U27) —
- 2 **Mobile, Ala. Apr. 12, 1861. Ties 3c 1857, date of the bombardment of Fort Sumter,** immaculate Cover (26) —
- 3 **Mobile, Ala. May 30, 1861 ties 3c red entire, last day on which mail was Carried under Federal Service, Cover small stain** (U10) —
- 4 **Montgomery, Ala. Jan. 30, (1861) ties 3c star die, immaculate Cover, rare use as Independent Republic** (U27) —
- 5 **Princeton, Ark. May 7 (1861) 3c 1857, rare use as Independent Republic (Photo)** (26) —
- 6 **Dalton, Ga. April 9, 1861 on 3c star die tied grid, Extremely fine** (U27) —
- 7 **Savannah, Ga. Feb. 23, 1861 ties 3c 1857, use as Confederate state, cover repaired at top** (26) —
- 8 **Carrolton, Miss. Jan. 14, 1861 Cover slight nick at top, rare use as Independent Republic on immaculate Cover** (U27) —
- 9 **Carrolton, Miss. Feb. 4, 1861 ties 3c star die entire, The First day of the Confederacy, Extremely fine** (U27) —
- 10 **Charleston, S. C. Dec. 20, 1860 3c 1857 and 3c Star die entire tied grid, Date of birth of a lost cause, the day South Carolina seceded from the Union** (26, U26) —
- 11 **Charleston, S. C. Jan. 14, 1861 3c 1857 tied grid on extremely fine cover, use as Independent republic** (26) —

- 12 **Wartrace, T & N. C. R. R. June 10, 1861** ties 3c 1857 to small cover, back flap missing, use in Tennessee a Independent Republic, rare (26) —
- 13 **Chapel Hill, Tex. Feb 10 (1861) fancy open five pointed star ties 3c star die, immaculate Cover, use as Independent Republic (Photo) (U27)** —
- 14 **Richmond, Va. April 24, 1861** ties 3c Star die entire on immaculate cover, use as an Independent republic (U26) —
- 15 **Richmond, Va. May 19, 1861** ties 3c Star die entire, the Capitol of the Confederacy was moved from Montgomery to Richmond on this date, Cover has two minor tears (U27) —

REJECTED MAIL

- 16 **Alexandria, Louisiana June 2, 1861 Paid 5 in red 3c 1857** defaced, two days after Federal postal service ceased (Ex Chase) (26) —
- 17 **Dead Letter Office, P. O. Dept. July 31, 1861, Due 3cts** Extremely fine cover, rare (U10) —
- 18 **Southern Letter Unpaid Due 3 and Louisville Ky. in blue, small cover Pmk. Salem, Va., rare (Photo) (U26)** —
- 19 **Stamp no good in mss. 3c 1857, tied Memphis, Ten. June 1, cover Pmk due 5, Day Confederate Mail Service started. U. S. stamp could not do duty (26)** —
- 20 **Cannot be Forwarded in rectangle, 3c 1861 tied on Cover Pmk Mount Pulaski Ill. flap Pmk New Orleans, La. rare (U27)** —

THE HANDSTAMPED PAID MARKINGS

Where Provisional stamps and envelopes were not available or had not been purchased in advance of use, Confederate Postmasters handstamped "Paid" and the amount of postage on citizens letters as they were brought to the Post Office for mailing. Required postage was then either paid in cash or charged to the citizens account.

- 21 **Mobile, Ala. Jun 1, 1861 Paid 5 in rectangle, The First Day Mail was Carried by the Confederate Government Extremely fine (U26)** —
- 22 **Mobile, Ala. Jun. 23, 1861 blue Paid 5 in small rectangle, Extremely fine (Photo) (U27)** —
- 23 **Alexandria, La. Jun 16 (1861) Paid 5 in red Extremely fine (U26)** —
- 24 **Columbia S. C. Paid and large 5, in blue on immaculate cover (U27)** —
- 25 **Paid 2 in small Circle on neat cover, Mss. Little Hattie, drop letter, Little Hattie was the ferryboat plying between the fort and Charleston City V.F. (U26)** —

MAIL CARRIED BY EXPRESS IN LIEU OF U. S. POSTAL SERVICE

- 26 **Adams Express Co. Baltimore, Md. Aug. 9, 1861 on 3c Star die entire, also Pmk. Adams Ex. Co. Louisville, Ky. and blue Nashville, Tenn. and Paid 10, cover repaired at top (Photo) (U26)** —
- 27 **Adams Express Company Knoxville, Tenn. Jul 4 in black oval on cover from within the Confederacy (Tudor Hall, Va. Mss.) to New Orleans which was in the hands of the Union armies V. F. (Photo) (U27)** —

- 28 Adams Ex. Co. Louisville, Ky. Aug. 7, 1861 in black, 3c 1857 tied blue grid, Louisville Ky. Aug. 7, 1861, from New Orleans to New York, V.F. (Photo) (26) —
- 29 Adams Ex. Co. Louisville, Ky. in black on 3c star die bearing 3c 1857 tied blue grid, Louisville Ky. Aug 13, 1861, South to North immaculate cover, Ex Shenfield (photo) (26-U27) —

THE GENERAL ISSUE STAMPS

More than four months elapsed after the Confederate Government commenced operating its own postal service before it succeeded in producing stamps for general use. On October 16, 1861, the lithographed 5c Green stamps were first placed on sale, and the 10c Blue and 2c Green followed. Later these colors were changed to Blue for the 5c and Rose for the 10c. Then came the 1c and 5c stamps from typographed plates made in England, and finally, the engraved 2c, 10c and 20c stamps which were produced in the Confederacy.

5c GREEN

- 30 ★ 5c Green, 4 margins, nice color, Extremely fine (1) —
- 31 ○ 5c Deep Green, 4 huge margins, Canc. grid, spur variety 21S2 a gem (Photo) (1) —
- 32 ○ 5c Green, 4 large margins, Extremely fine (1) —
- 33 ○ 5c Olive Green, Stone A Canc grid, V. F. (1c) —
- 34 5c Pale Olive Stone A tied Richmond, Va. Oct. 16, 1861 on cover bearing State Seal of Va and Executive Dept., V. F. Early date (1c) —
- 35 5c Green, 4 large margins, sheet margin at top, tied Mobile, Ala. Feb. 3, 1862 Stone A, Extremely fine (1) —
- 36 5c Green, 4 margins privately perforated, tied New Orleans, La. to immaculate cover, Pos. 21-S-1, Extremely fine, rare (Photo) (1) —
- 37 5c Green, 4 margins, sheet margin at bottom tied Charleston, S. C. Dec. 12, 1861 to neat cover, Pos. 43-S-1, Extremely fine (1) —
- 38 5c Green, 2 singles, V. F. Pos. 28, 30-S-1 tied Mobile Ala. Dec. 12, 1861 on cover also Pmk. Richmond, Va. Dec. 18, 1861 and Forwarded 5 in truncated rectangle V. F. (Photo) (1) —
- 39 5c Green, Horizontal strip 3, Pos. 13, 14, 15-S-1, V. F. tied Abington, Va. to reduced cover, slight crease, rare rate (1) —
- 40 5c Deep Green, 4 large margins, tied Richmond, Va. Oct. 30, 1861, stamp and cover, Extremely fine (1) —
- 41 5c Green, close at top, tied rare Fredericksburg, Va. Paid on cover Pmk. Due 5 because of insufficient postage, rare and extremely fine (Photo) (1) —

10c BLUE

- 42 10c Deep Blue, Hoyer, 4 huge margins, tied Corinth, Miss., on immaculate cover (Photo) (2) —
- 43 10c Blue, Hoyer, 4 margins privately rouletted, the only cover of record, tied Chattanooga Tenn. rare and V. F. (2) —
- 44 10c Blue, Hoyer, 4 margins, slight crease, tied Mobile, Ala. Jan. 5, 1862 on printed protest (2) —

- 45 ☒ 10c Blue, Paterson, 4 huge margins tied Uniontown, Ala., cover small repaired tear (2) —
- 46 ☒ 10c Dark Blue, sheet margin copy, tied Mobile, Ala. Sep. 25, 1862, Extremely fine (2) —
- 47 ☒ 10c Blue, Paterson, Stone Y., 4 large margins, tied Tullahoma Ten May 25, 1863 to immaculate cover (Photo) (2) —
- 48 ☒ 10c Blue, Stone "Y", 4 margins tied Holly Springs Miss. Nov. 22, and Little Rock, Ark. Nov. 30 on neat cover, Extremely fine (2) —
- 49 ☒ 10c Light milky blue, Stone "Y", 4 margins tied Thomasville, Ga. to immaculate cover, extremely fine (2) —
- 50 ☒ 10c Light Milky Blue, Stone "Y", 4 margins, tied San Antonio, Tex to immaculate cover, extremely fine (2) —

2c GREEN LITHOGRAPH

- 51 ○ 2c Green, 4 large margins, light canc. Extremely fine (Photo) (3) 45.00
- 52 ○ 2c Green, 4 margins, close top, tied to piece, Mobile Ala. May 15, 1863 (Photo) (3) 45.00
- 53 △ 2c Green, 4 margins, tied to piece, Macon Ga. Nov. 1 1862, V. F. (Photo) (3) 45.00
- 54 ☒ 2c Green, 4 margin copy, tied blue Raleigh, N. C. to Cover repaired at top (3) —
- 55 ☒ 2c Green, strip of 3 and two singles, all 4 margins tied Richmond, Va. on V. F. cover (Photo) (3) —

5c BLUE LITHOGRAPH

- 56 ★ 5c Deep Blue, 4 margins, Extremely fine —
- 57 ○ 5c Blue, 4 huge margins, Pos. 49S2 Extremely fine (Photo) (4) —
- 58 ○ 5c Light Milky Blue, Stone 3, 4 margins, Extremely fine (Photo) (4) —
- 59 ☒ 5c Blue, light shade, 4 margins, tied perfectly struck Wilmington, N. C. on V. F. cover (4) —
- 60 ☒ 5c Light Milky Blue, Horiz. pair, 4 margins, tied blue Raleigh, N. C. on neat cover, rare and Extremely fine (4b) —
- 61 ☒ 5c Blue, Horiz. Pair, 4 margins, tied St. Martinsville, La. on neat cover also Pmk. Vernon, Mi. and Mss. Due 10, Extremely fine (5) —

10c ROSE LITHOGRAPH

- 62 ○ 10c Carmine Rose, 4 margins canc. Selma, Extremely fine (Photo) (5) —
- 63 ○ 10c Rose, 4 margins, V. F. (Photo) (5) —
- 64 ○ 10c Light Rose, 4 margins, Canc. Savannah, Extremely fine (5) —
- 65 ○ 10c Deep Rose, 4 margins, tied to piece Vicksburg, Miss, Extremely fine (Photo) (5) —
- 66 ○ 10c Salmon, 4 large margins, rare shade, canc. Richmond Jun. 11, 1862, from the Shenfield collection (Photo) (5) —
- 67 ☒ 10c Rose, touches lightly top right, tied blue Petersburg Va. to neat cover (5) —
- 68 ☒ 10c Light Rose, 4 margins tied Atlanta, Ga. Aug. 13, 1862 to immaculate cover (5) —



31



51



52



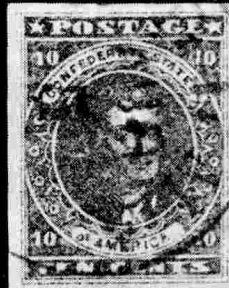
53



57



58



62



63



65



66



82



111



226



227



229

JOHN A. FOX

MAY 24th, 1955

5c BLUE TYPOGRAPH

London and Local Printings.

- 69 ★ 5c Blue, London print on local paper, Blk. 4, Extremely fine, o. g. (6) —
 70 ★ 5c Blue, 2 four margin blocks 4, Local & London print, V. F. (6, 7) 10.00
 71 ☒ 5c London Print, tied unusual date, Richmond, Va. Jun. 20, 1862, Extremely fine (6) —
 72 ☒ Southern University illustrated college cover, repaired at top, 5c Blue, Horiz. pair left stamp in slightly at bottom, tied neat Greensborough, Aja. (6) —
 73 ☒ 5c Blue, Local print Horiz. pair, 4 margins tied Spartanburg, S. C., corner card in black oval, back flap missing, Extremely fine appearance (7) —

2c RED BROWN ENGRAVED

- 74 △ 2c Brown Red, in bit at upper right, tied blue Charlottesville Va. Apr. 11, 1863 earliest known date of usage, rare, signed Dietz (8) —
 75 ☒ 2c Brown Red, tied indistinct blue cane. to neat cover (8) 75.00
 76 ☒ 2c Brown, Vert. strip 3 and 2 singles, tied Macon, Ga. on neat cover (Photo) (8) —

"TEN" CENTS BLUE ENGRAVED

- 77 ★ T-E-N, 10c Blue, 4 margins Extremely fine, o. g. (9) 35.00
 78 ★ T-E-N, 10c Blue, 4 margins, o. g., magnificent impression, Extremely fine (9) 35.00
 79 ★ T-E-N, 10c Blue, Horiz. pair, 4 margins, creased, V. F. impression (9) 80.00
 80 ☒ T-E-N, 10c Blue, 4 margins, nicely tied Va. Pmk. to neat cover, portion of back flap missing (Photo) (9) —

10c BLUE FRAMELINE

- 81 ○ 10c Blue, Frameline, tiny thin spot, 4 margins, shows complete line on 3 sides, mss. cane. (10) 80.00
 82 ★ Frame Line, 10c Blue, Horizontal pair, o. g., Extremely fine, a great rarity (Photo) (10) 500.00
 83 ☒ Frame Line, 10c Blue, Earliest known use, tied Apr. 19, 1863, to Extremely fine cover (Photo) (10) —
 84 ☒ Frame Line, 10c Blue, showing complete frame top and bottom and portions left and right nicely tied Mobile, Ala. Jul 4, 1863 to neat cover, small defect at corner (Photo) (10) —

ARCHER & DALY PRINTS

- 85 ★ 10c Blue, Imprint strip 6 right pane, Imprint No. 2 Archer & Daly crossed out by Horiz. lines, Bank Note Engravers, Richmond, Va., V. F. o. g. (11) —
 86 ★ 10c Blue, Type I, Blk 4, large margins, o. g. Imprint No. 1, Extremely fine, o. g. (Photo) (11) —
 87 ★ 10c Blue, Type I, Blk 4 Large margins, Imprint No. 2, Extremely fine, o. g. (Photo) (11) —

- 88 ○ 10c Blue, types I & II, 10 copies all V.F., a nice array of shades (11, 12) —
- 89 ★ 10c Blue, Type I & II, five Extremely fine blocks of 4 shades, o.g. (11, 12) —
- 90 ★ 10c Blue, Type I, full sheet of 100, Right Pane, Imprint "No. 1", First state with numbers only by Archer & Daly folded once between stamps V.F., o.g. (11) —
- 91 ★ 10c Blue, Type I, left Pane of 100, Imprint Archer, Bank Note Engravers Richmond, Va. No. 1, sheet folded once, V.F., o.g. (11) —
- 92 ★ 10c Blue, Type I, right pane of 100, folded once, Imprint No. 1, Archer & Daly Bank Note Engravers, Richmond, Va., V.F. o.g. (11) —
- 93 ★ 10c Blue, Type I, right pane of 100, Imprint No. 2 Archer & Daly, Bank Note Engravers Richmond, Va. Extremely fine, o.g. (11) —
- 94 ★ 10c Milky Blue, Type I, First state Plate, "No. 2", sheet of 190, full pane at left, 90 at right folded between stamps, small thin spot, o.g. (11) —
- 95 ○ 10c Blue, Type II, Vert, strip 3, four large margins, black Pmk., V.F. (Photo) (11) —
- 96 ○ 10c Blue, Type I, Horiz. strip 6, four huge margins, from the Walcott collection (Photo) (11) —
- 97 ○ 10c Blue, Type I, Blk of 8 Canc. Mobile, Ala., from the Baer Collection, rare and Extremely fine (Photo) (1) —
- 98 ○ 10c Blue, Type I, sheet margin block of 6, tied on piece of cover by Chalk Springs, Fla., 4 large margins, rare and Extremely fine (Photo) (11) —
- 99 ○ 10c Blue, Type II, three blocks forming a reconstructed block of 14, Cancelled West Point, Ga. Margins all around Extremely fine (Photo) (11) —
- 100 ○ 10c Milky Blue, block of 14, one stamp cut into slightly, the block Extremely fine, the largest known and of the greatest rarity, Canc. Goldsborough, N. C. Sep 8 (Photo) (11a) —
- 101 ⊠ 10c Blue, Type I, 4 margins tied Richmond, Va. Apr. 23, 1863 to neat cover, Earliest known use Extremely fine (Photo) (11) —
- 102 ⊠ 10c Blue, Type I, 4 margins tied Richmond, Va. Apr. 28, 1863 2nd earliest known date, "only 2 known used in April", Extremely fine (11) —
- 103 ⊠ 10c Blue, Type I, four jumbo margins, nicely tied Meridian, Miss. on neat cover a super copy (Photo) (1) —
- 104 ⊠ 10c Blue, Type I, 4 huge margins, tied nicely struck Gordonsville, Va., Extremely fine (11) —
- 105 ⊠ Littlerockfish, N. C. exceptionally clear strike ties 10c blue, type I, 4 margins to neat cover (11) —
- 106 ⊠ 10c Blue, tied cork canc. on folded letter, Contents refer to Two Exemption Acts. "The 20 Negro Law" and "The Meat Law" rare (11) —
- 107 ⊠ 10c Blue, type I, 4 margins tied Newberry C. H. S. C. Sep. 9, 1864, rare year date, Extremely fine (11) —
- 108 ⊠ 10c Blue, Horiz. pair Type I, stained, tied Albany Ga. Sep 4, 1864, scarce year date (11) —
- 109 ⊠ 10c Blue, Type I, Vert. Pair, huge margins, tied Richmond, Va. tied to neat cover (11) —
- 110 ⊠ 10c Blue, Type I, block 4 huge margins, tied Watkinsville, Ga. to home-made cover, made from printed legal form (Photo) (11) —
- 111 P 10c Blue, Die Proof, rare and extremely fine (Photo) (12P) —
- 112 ★ 10c Blue, Imprint strip 6 right pane, Imprint "No. 3 Archer Bank Note Engravers Richmond, Va., V.F., o.g. (12) —
- 113 ★ 10c Blue, Imprint strip 6, left pane, Imprint, Bank Note Engraver Richmond, Va. No. 4. This is last use of the plate and is very rare, o.g. (12) —

- 114 ★田 10c Blue, Type II, Blk 4 Rare Imprint "No. 3" V. F., o. g. (Photo) (12) —
- 115 ★田 10c Blue, Type II, Blk 4, Imprint "No. 4" creased between stamps, V. F. o. g. (Photo) (12) —
- 116 ★ 10c Blue, Type II, full sheet of 100, right pane 1st State, Pl "No. 4", folded once between stamps, Extremely fine, o. g. (12) —
- 117 ○ 10c Blue, Type II, Horiz. strip 3, cane. black Pmk., V. F. (12) —
- 118 ○田 10c Blue, Type I, Blk 4, huge margins, canc. Harrisonburg, Va. Extremely fine (Photo) (12) —
- 119 ○田 10c Blue, Type II, used block of 4, rare, from the Ferrari Collection, Mobile Ala., Extremely fine (Photo) (12) —
- 120 田 10c Blue, Type II, 4 margins, tied Richmond, Va. May 1, 1863, Earliest known use V. F. (12) —
- 121 田 Overpaid Drop Letter, 10c Blue, Type II, 4 margins, tied Richmond, Va. to Richmond V. F. (12) —
- 122 田 10c Blue, Type II, 4 Margins, Magnificent impression tied Albany, Ga. Jul 12, 1864 Extremely fine (12) —
- 123 田 10c Blue, type II, tied Albany, Ga. Nov. 14, 1864, rare year date, V. F. (12) —
- 124 田 10c Blue, Horiz Pair type II, tied Albany Ga. Aug. 27, 1864, stamps small defect (12) —
- 125 田 Charlottesville, Va. Sep. 7, 1865 and Due 10, on reverse 10c blue Type II canc. but not recognized, Extremely fine cover (12) —
- 126 田 10c Milky Blue, Horiz. pair, Marvelous impression 4 margins, tied Athens, Tenn. Legal size cover, mss. Election returns, V. F. (12a) —

KEATINGE & BALL PRINTS

- 127 ★ 10c Blue, Type I, Imprint strip 6, "No. 1 Keatinge & Ball Bank Note Engravers, Columbia," S. C., V. F., o. g. (11) —
- 128 ★ 10c Deep Blue, Type I, Imprint strip 6, "Keatinge & Ball Bank Note Engravers Columbia S. C. No. 2," slight thinning at left, o. g. (11) —
- 129 ★ 10c Deep Blue, Type II, strip 6, Imprint "No. 3 Keatinge & Ball Bank Note Engravers, Columbia S. C.," Extremely fine, o. g. (12) —
- 130 ★ 10c Deep Blue, Type II, strip six, Imprint "Keatinge & Ball Bank Note Engravers Columbia S. C. No. 4," K of imprint cut away margins all around some stains (12) —
- 131 田 10c Deep Blue, Type I K & B, huge 4 margins tied Petersburg, Va. Jan 15 (1865) Extremely fine (11) —
- 132 田 10c Deep Blue, Type I sheet margin copy, K & B, tied Vienna, Ga. April 9, 1865, "The Day that Lee Surrendered," stamp a jumbo copy (11) —
- 133 田 10c Deep Blue, Type I, 4 large margins, tied Richmond, Va. Feb. 26 (1865) to neat cover (11) —
- 134 田 10c Deep Blue, Type I, K & B, 4 margins, tied Petersburg, Va. to neat cover Extremely fine (11) —
- 135 田 10c Blue, type I, K & B 4 margins, tied Petersburg Va. on immaculate cover, stamp paper yellowish tone (11) —
- 136 田 10c Deep Blue, type I, 4 margins, corner sheet margin, tied Salisbury, N. C., cover age stains (11) —
- 137 田 10c Blue, type I, 4 margins, tied Va. canc., Fine (11) —
- 138 田 10c Deep Blue, K & B 4 margins, tied Raleigh, N. C. to neat cover, V. F. (11) —
- 139 田 10c Deep Blue, type I, 4 huge margins, tied Social Circle, S. C. to immaculate white cover (11) —



86



87



114



115



98



95



118



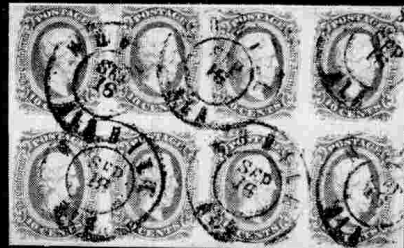
119



96



100



97



99

JOHN A. FOX

MAY 24th, 1955

- 140 ☒ 10c Deep Blue, type II, K & B, 4 margins, tied Richmond, Va., V. F. (12) —
 141 ☒ 10c Blue, type II, K & B sheet margin copy, tied black Petersburg, Va. to neat cover (12) —
 142 ☒ 10c Blue, type II, K & B 4 margins tied Monticello, Flor. V. F. (12) —
 143 ☒ 10c Blue, Type II, 4 margins, tied Monticello, Flor., K & B. Extremely fine (12) —
 144 ☒ 10c Deep Blue, Clear Impression, tied La Grange, Ga. Apr. 9, 1865 (The day Lee surrendered) Extremely fine cover (12) —
 145 ☒ 10c Blue, type II, K & B 4 large margins, tied Morgantown, N. C. to Extremely fine cover (12) —
 146 ☒ 10c Deep Blue, Horiz Pair K & B, 4 margins tied Richmond, Va. to repaired cover. Rare (12) —

PERFORATED STAMPS

- 147 ★ 10c Blue, Type I, sheet of 98, Perforated the largest known piece, found by Major J. Lawson in Greensboro, Ala. in 1899. From the Knapp Collection, a great rarity (Photo) (11d) —
 148 ☒ 10c Blue, type I, Perforated tied Mobile, Ala. to cover, small stain ... (11d) —
 149 ☒ 10c Blue, type I, Perforated tied Selma, Ala. to immaculate cover (11d) —
 150 ☒ 10c Blue, type I, Perforated tied Mobile, Ala. to neat cover (11d) —
 151 ☒ 10c Blue, type I, Perforated tied Demopolis, Ala. V. F. (11d) —
 152 ☒ 10c Blue, Type I, Perforated tied Navassa, Tex. on repaired cover, V. F. appearance, rare (11d) —
 153 ☒ 10c Blue, Type I, Perforated tied Newnan, Ga. Extremely fine (11d) —
 154 ☒ 10c Blue, Type I, Perforated four huge margins, Corner sheet margin, tied by indelible Cane. to neat cover (11d) —
 155 ☒ 10c Blue, Type I, Perforated, V. F., tied Columbus, Ga. to neat cover (11d) —
 156 ☒ 10c Blue, Type I, unofficially perforated, tied blue Charlottesville, Va. Extremely fine (11d) —
 157 ☒ 10c Blue, Type I, unofficial roulette, 4 margins tied Mount Crawford, Va. Extremely fine (11d) —
 158 ★ 10c Blue, Perforated, V. F. o.g. (12e) 15.00
 159 ★ 10c Blue, Type II, Perforated, Strip 3, Imprint, Richmond Va. No. 4, rare & Extremely fine, o. g. (12e) —
 160 ○ 10c Blue, Type I, Perforated Pmk Mobile, Ala., rare in pair, V. F. (12e) —
 161 ☒ 10c Blue, Type II, Perforated but by Private Party not official, tied Atlanta, Ga. Extremely fine (12e) —
 162 ☒ 10c Blue, type II, Perforated, nicely tied Mobile, Ala., cover Clipped at corner (12e) —
 163 ☒ 10c Blue, type II, Perforated tied Macon, Ga., fine (12e) —

USE ON U. S. ENTIRES

- 164 ☒ 10c Blue, Type II, 4 margins, tied Madison, C. H., Va on 3c U. S. Entire, V. F. (12-U9) —
 165 ☒ Overpaid Drop Letter, 10c Blue, Type I, four margins, tied Richmond Va. used over U.S. 3c Entire to Richmond, V. F. (11, U9) —
 166 ☒ 10c Blue, Type I, 4 margins tied Wytheville, Va., used over 1c Blue U. S. Entire, Extremely fine (11-U19) —
 167 ☒ 10c Blue, Type II, cut in right, tied Atlanta, Ga. used over 3c star die entire small defect at top (12-U27) —



JOHN A. FOX

Lot 147

MAY 24th, 1955

COLORED CANCELLATIONS

- 168 △ **Buckingham, C. H. Va.**, in red, tied 10c blue, 4 margins, to piece of cover (11) —
- 169 △ **Columbia, S. C. in blue** ties 10c blue, sheet margin single to piece, V. F. (11) —
- 170 △ **Petersburg, Va. in blue**, ties 10c blue, V. F. sheet margin single to piece of cover (11) —
- 171 △ **Lynchburg, Va. in green** ties 10c blue to piece of cover, V. F. (11) —
- 172 △ **Lynchburg, Va. in vivid green** ties 10c blue, 4 margins to piece, Extremely fine (11) —
- 173 △ **Chester C. H. S. C.** in green ties 10c blue, Type I to piece of cover, V. F. (11) —
- 174 △ **Crawfordsville, Miss.** in red ties 10c blue to piece (11) —
- 175 △ **Dunn's Rock, N. C.** in red ties 4 margin 10c blue, type I to piece, V. F. (11) —
- 176 △ **Chester C. H. S. C.** in red ties Vert pair 10c blue, 4 margins to piece of cover, Extremely fine (11) —
- 177 ☒ **University of Va.** in blue different type, large letters, ties 10c blue, 4 margins, Extremely fine (11) —
- 178 ☒ **University of Va. and grid in blue ties 10c blue** 4 margins to neat cover V. F. (11) —
- 179 ☒ **Morgantown, N. C. in green, ties 10c blue**, 4 margins to Extremely fine cover (11) —
- 180 ☒ **Augusta, Ga., in Violet** ties 10c blue, 4 margins to Extremely fine (11) —
- 181 ☒ **10c Blue, type I, 4 margins, tied rare blue Richmond Va., May 18, 1863 to neat cover Extremely fine** (11) —
- 182 ☒ **Greensborough, N. C.** in blue ties 10c blue, 4 margins to Extremely fine cover (11) —
- 183 ☒ **Petersburg, Va. in blue** ties 10c blue, 4 margins, to neat cover, V. F. (11) —
- 184 ☒ **Augusta, Ga.** in violet ties 10c blue, 4 margins to neat cover (11) —
- 185 ☒ **Greensborough, N. C.**, in red ties 10c blue, Close at right on neat cover (11) —
- 186 ☒ **Yanceyville, Ga.** in red ties 4 margin 10c blue to neat Cover, Extremely fine (11) —
- 187 ☒ **Adairsville, Ga.** in red ties 10c blue, 4 margins to neat cover (11) —
- 188 ☒ **Blacks & Whites, Va.** in red ties 10c blue to Cover, several small tears (11) —
- 189 ☒ **Smithfield, Va.** in red ties 10c blue, 4 margins to neat cover, Extremely fine (11) —
- 190 ☒ **10c Milky Blue, Type I, Vert. pair huge margins tied blue Raleigh, N. C.** Extremely fine (11a) —
- 191 ☒ **10c Deep Blue, Type I 4 huge margins, tied brilliant green Pmk. Lynchburg Va. on immaculate cover a gem** (11) —
- 192 ○ **10c Deep Blue, 4 margins, Canc. green Lynchburg, Va.** Extremely fine (12) —
- 193 △ **Manassas, Ga.** in blue ties 10c blue to piece of cover, V. F. (12) —
- 194 △ **Petersburg, Va. in blue** ties 10c blue, 4 margins to piece of cover, V. F. (12) —
- 195 ○ **10c Blue, Type II, Vert. strip 3 Cane. blue N. C. Pmk., V. F.** (12) —
- 196 ☒ **Lynchburg, Va.** in Violet, ties 10c blue, 4 margins to neat cover (12) —
- 197 ☒ **Columbia, S. C.** in blue ties 10c blue, 4 margins, to Extremely fine cover (12) —

- 198 ☒ **Troup Factory, Geo.** in blue ties 10c blue, 4 margins to immaculate cover, Extremely fine (12) —
- 199 ☒ **Chester, C. H. S. C.** in red small double circle ties 10c blue, 4 margins to immaculate cover, Extremely fine (12) —
- 200 ☒ **Gaston, N. C.**, brilliant red cane., ties 10c blue, corner sheet margin copy, stamp, cane. and cover Extremely fine **(Photo)** (12) —
- 201 ☒ **Social Circle, Geo.** in brilliant red ties 10c blue, 4 margins to immaculate cover, Extremely fine (12) —
- 202 ☒ **Kosciusco, Miss. in red ties 4 margin 10c blue type II to neat cover** (12) —
- 203 ☒ **Buckingham, C. H. Va., in red ties 10c blue, 4 margins** to reverse of neat cover, Extremely fine (12) —
- 204 ☒ **10c Blue, type II, 4 margins nicely tied blue Hillsboro N. C. Jan 2, 1864, rare year date, V. F.** (12) —
- 205 ☒ **10c Deep blue, Type II, K & B 4 margins, tied red Greensborough, N. C. to neat cover, Extremely fine** (12) —

FORWARDED COVERS

- 206 ☒ **Forwarded Cover, 10c Blue, type I, jumbo corner sheet margin copy tied Selma, Ala., cover mss. Forwd due 10 V. F.** (11) —
- 207 ☒ **Forwarded Cover, damaged 10c blue tied Richmond, Va., 10c type II, tied Fisherville, a station on Va. C. R. R., rare** (11, 12) —
- 208 ☒ **Forwarded Cover, 10c Milky blue tied Marietta, Ga. 10c blue affixed directly over it tied Savannah, Ga., to neat cover, Extremely fine** (11, 11a) —
- 209 ☒ **Forwarded Cover 10c Blue, Type II tied blue Hillsboro, N. C., cover also Pmk black Mocksville, N. C. V. F.** (12) —

ODDITIES

- 210 ○ **10c blue, type I, badly smudged print "Printers Waste" 4 Margins** (11) —
- 211 ○ **10c Blue, Type I, smudged print "Printers Waste"** (11) —
- 212 ☒ **10c Blue, Vignette only cut to shape tied Atlanta Ga. to immaculate cover** (11) —
- 213 ☒ **10c Blue, Vignette cut to shape in octagonal form tied Charleston, S. C. to neat cover, V. F.** (11) —
- 214 ☒ **10c Blue, Type I, Parts of two separate stamps placed together and passed through the mail as a single stamp tied Savannah, Ga. Paid (Photo)** (11) —
- 215 ☒ **10c Blue, Type I, strip 4, cut in right and left Plate 3, Pos. #62, 63, 64, 65, The big shift, tied on Cover, front only, rare** (11) —
- 216 ☒ **10c Blue, stamp torn in two and tied blue Canc. on neat cover V. F. oddity** (12) —
- 217 ☒ **10c Blue, Type II Ory plate print, tied rare Nelson Station, WM** (12) —
- 218 ☒ **10c Blue, Type II tied Winchester, Va., stamp shows tremendous printing flaw** (12) —
- 219 ☒ **10c Blue, Type I, sheet margin copy, tied Raleigh, N. C. and mss. Paid if the Damn thing sticks, This cover written up in the Saturday Evening Post 1934, scarce (Photo)** (11) —
- 220 ☒ **10c Blue, large line of color, plate defect, four margins tied Charleston, S. C., V. F.** (12) —
- 221 ☒ **10c Blue, 4 margins, Creased paper variety, tied Washington, Ga. V. F.** (12) —

RAILROAD CANCELLATIONS

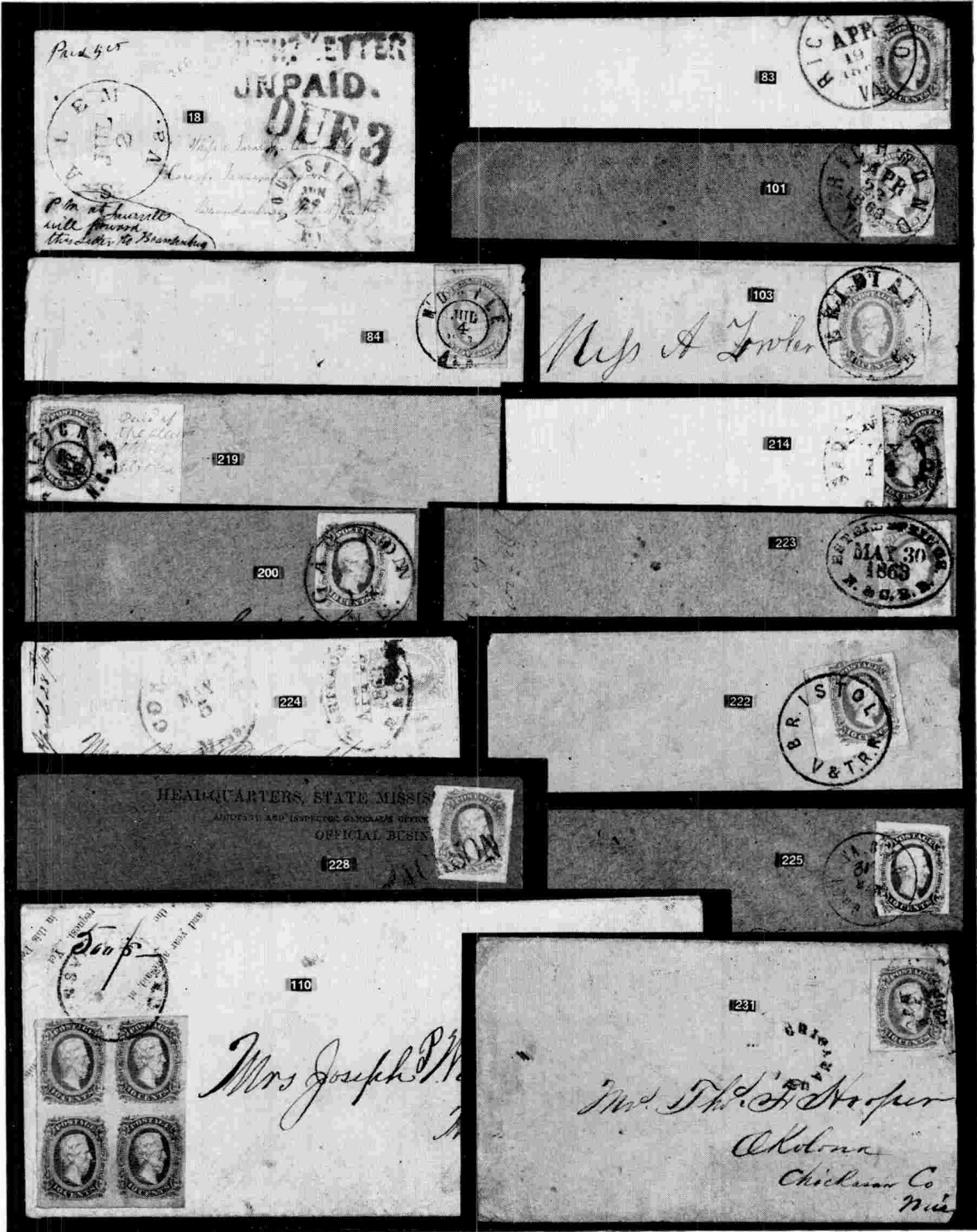
- 222 ☒ Bristol, V. & T. R. R. superb strike ties sheet margin Copy 10c Blue, type I to immaculate cover (Photo) (11) —
- 223 ☒ Estill Springs, N. & C. R. R. May 30, 1863, superb strike in oval ties 10c blue, type I 4 margins to immaculate cover, a marvelous cover (Photo) (11) —
- 224 ☒ Wartrace, N. & C. R. R. Apr. 28, 1863, in oval ties 10c blue type I, very early date on neat cover, also Pmk. Columbus, Miss., rare, V. F. (Photo) (11) —
- 225 ☒ Pond Gap Va. Central R. R., ties 10c Blue type II, Close at bottom, to neat Cover, V. F. (Photo) (12) —

STRAIGHT-LINE CANCELLATIONS

- 226 ○ Jackson (Miss), straight line canc. on 10c blue, type I 4 large margins, Extremely fine (Photo) (11) —
- 227 ○ Ravens Nest, Va. May 8th 1864, superb strike on 10c blue, type I, 4 margins, a great rarity (Photo) (11) —
- 228 ☒ Straight line Jackson ties 10c blue, type I, 4 margins to neat cover, Imprint Headquarters, State Mississippi Adj. & Inspector Genls office, V. F. (photo) (11) —
- 229 ○ Goodson (Ala.) straight line Cane. 10c blue type II, creased (Photo) (12) —
- 230 ☒ Goodson (Ala.), Straight line ties 10c blue, type I, lower right corner clipped, neat, clean cover. (Photo) (12) —

ODD CANCELLATIONS

- 231 ☒ Chicamagua in small open circle, 10c blue, type I, tied Logo, Oct 25, 1863, rare, stamp and cover, V. F. (Photo) (11) —
- 232 ☒ Crossroads Canc., 10c blue type I, 4 margins, canc not tied, cover Pmk Mount Crawford, Va., V. F. written up in C. C. Philatelist (Photo) (11) —
- 233 ☒ 6 Bar grid, Canc. 10c blue 4 margins, tied mss. Ga. Campaign, Tenn. Army, V. F. (11) —
- 234 ☒ Turned cover, 10c blue, type I, tied 5 bar grid in Circle and Pmk. Center, Ala. other side Canc. Shelbyville Te. and Due 10, V. F. (Photo) (11) —
- 235 ☒ Canton, Miss. on cover 10c blue type I, 4 margins, tied rare 4 bar grid, Extremely fine (Photo) (11) —
- 236 ☒ 7 Bar grid ties 10c blue type I, to neat cover Pmk clear Winnsborough S. C. V.F. (11) —
- 237 ☒ Numeral 5 ties 10c Blue, type I, 4 large margins to immaculate cover, probably from Griffin, Ga. (11) —
- 238 ☒ Paid 10, straight line ties defective 10c blue, type I to neat cover (11) —
- 239 ☒ 10c Blue, type I, 4 margins tied rare Paid 10 in horseshoe design to immaculate Cover Pmk Patterson, N. C., a beauty (Photo) (11) —
- 240 ☒ Fort Gaines, Ga. ties 10c blue, type I, in a bit at top, clean neat cover (11) —
- 241 ☒ Chatanooga, Ten., 10c blue 4 margins, dated, Oct 19, (1863) As Chatanooga was abandoned by the Confederates Sep. 8, 1863, this must be an army canc., the Confederates took the Cancelling devices with them (11) —
- 242 ☒ Chatanooga, Ten. 10c Blue type II, 4 margins, canc. Dec. 4, (1863) same as previous lot, army mail (12) —



JOHN A. FOX

MAY 24th, 1955

243	⊠	Chatanooga, Ten. 10c blue 4 margins tied to neat cover, Jan 22 (1864), similar situation to previous lots	(11)	—
244	○	10c Blue, Horiz. pair, Canc. rare army canc., Chatanooga Ten., V. F.	(12)	—
245	⊠	Forsyth, Ga. and Paid plus additional Paid 10 which was evidently a provisional handstamp from an earlier period not recognized as stamp was affixed and canc. mss. V. F.	(12)	—
246	⊠	10c Blue, Type II, 4 large margins, tied target to neat cover Pmk. Ivy Depot, Va. Extremely fine	(12)	—
247	⊠	Army of Tenn. on 10c blue not tied, 4 margins, Cover Fwd and Pmk. Eutaw, Ala. Extremely fine, rare (Photo)	(12)	—
248	⊠	Army of Tenn. ties 10c blue, cut in top, cover V. F.	(12)	—
249	⊠	Numeral 10, ties 10c Blue, type I, stamp damaged	(12)	—
250	⊠	Guyton, Ga. May 10, 1864 superb strike, rare type year date in center, 10c Blue type II, 4 margins, Extremely fine (Photo)	(12)	—
251	⊠	10c Milky blue, type II 4 huge margins, tied rare 8 bar grid to immaculate cover, from the Brown Collection	(12a)	—

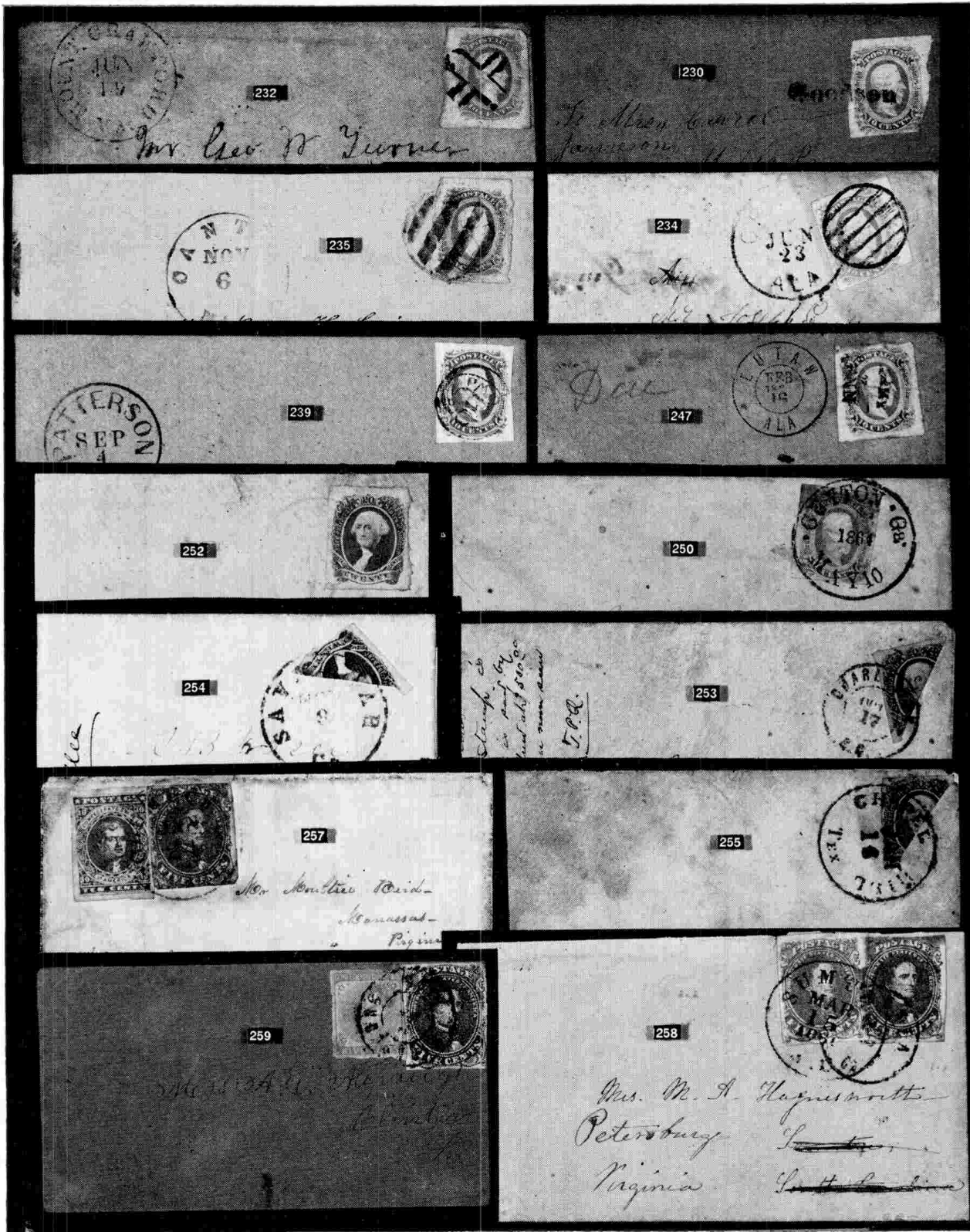
20c GREEN ENGRAVED

252	⊠	20c Green, 4 margins, tied purple Augusta, Ga. to portion of cover front rare (Photo)	(13)	—
253	⊠	20c Green diagonal bi-sect, tied Charleston, S. C. mss. notation on cover by previous owner (Photo)	(13c)	150.00
254	⊠	20c Green, diagonal bi-sect tied Savannah, Ga. to neat cover, Extremely fine (photo)	(13c)	150.00
255	⊠	20c Green, Diagonal Bi-Sect tied Chapel Hill, Tex., cover age stained (Photo) (13c)	(13c)	150.00
256	★	Genl. issues, Mint 4 margins, V. F.	(6, 7, 8, 11, 12, 13, 14)	15.00

COMBINATION COVERS

The change in Postal Rates caused people to use lower value stamps in multiples. Many times different issue stamps were used resulting in interesting covers.

257	⊠	5c Green, 10c blue Hoyer tied Columbus, Ga., to cover, Northern Patriotic border on reverse (photo)	(1, 2)	—
258	⊠	5c Green, 5c blue tied Augusta Ga., and Sumter, S. C. on neat cover (Photo) (1, 4)	(1, 4)	—
259	⊠	5c Green, 5 London tied Vicksburg, Miss., Extremely fine (Photo) (1, 6)	(1, 6)	—
260	△	5c Green, 5c London, each 4 margins, tied Chattanooga, Ten. on piece (1, 6)	(1, 6)	—
261	⊠	5c Green, 10c blue, latter defective, tied Watrace, Tenn. rare (Photo) (1, 11)	(1, 11)	—
262	⊠	2c Green, two copies and single of 5c blue local print stamps cut in, tied in combination by blue Columbia, S. C. on neat cover underpayment of 1c (Photo) (3, 7)	(3, 7)	—
263	⊠	5c Blue, 10c Carmine rose 4 margins, tied Society Hill S. C. to legal cover, Extremely fine (Photo) (4, 5)	(4, 5)	—
264	⊠	5c Blue London, Horiz pair in bottom left and 10c blue tied Richmond Va. on V. F. cover (Photo) (6, 11)	(6, 11)	—



JOHN A. FOX

MAY 24th, 1955

- 265 ☒ 5c Blue London, tied Washington, Ga., 10c blue tied Macon, Ga. to neat cover (photo) (6, 12) —
- 266 ☒ 5c Blue, Local, and strip of three 2c brown, tied Atlanta, Ga., overpayment of 1c, 5c stamp creased, a rare cover (Photo) (7, 8) —
- 267 ☒ 5c Blue Local, Blk 4 and 10c blue tied Richmond Va., on large cover, portion of address cut away, mss. Treasury Dept 2nd Auditors office (Photo) (7, 12) —
- 268 ☒ 10c Blue, tied Georgetown, Va. Was advertised for 2c and 2c brown affixed and tied Charleston S. C., cover has large 2 blotted out with grid. a very rare cover subject of an article by Stanley B. Ashbrook (Photo) (8, 11) —
- 269 ☒ 10c Blue, 20c rate, type 1 and 2, 4 margins tied Charleston, S. C. on repaired cover (11, 12) —
- 270 ☒ 10c Blue, Type II, single type I strip 3 type II tied Jackson Miss. to Columbus, Ga., V. F. (11, 12) —
- 271 ☒ 10c Blue, 20c Green tied Staunton, Va., cover small repair (Photo) (11, 13) —
- 272 ☒ 10c Blue, Type I, unofficial perforation, tied Summerville N. C. on forwarded cover, 10c Blue Type I tied Raleigh N. C. Extremely fine, a combination of great rarity (11d, 12) —

THE OFFICIAL, SEMI-OFFICIAL, AND STATE OFFICIAL ENVELOPES

Only the official correspondence of the Post Office Department was carried FREE in the Confederacy, and then only when enclosed in specially imprinted envelopes, each signed by an authorized official. Supplies of United States stamped envelopes were overprinted and used as well as regular commercial envelopes. When used for private correspondence postage was required.

Semi-Official envelopes were those imprinted by the other Government Departments, Military units, various Bureaus and Offices, as well as those of the several State Governments and their divisions, on which payment of postage was required for all usages.

POST OFFICE DEPARTMENT — FREE

- 273 ☒ C. S. A. Post office Dept. Chief of the appointment Bureau B. N. Clements, 3c U. S. star die Pmk. Richmond, Va. and Free Extremely fine (Photo) (U27) —
- 274 ☒ C. S. A. Post office Dept. B. N. Clements, Chief of the appointment Bureau, cut down legal cover Pmk. Richmond, Va. and free, V. F. —
- 275 ☒ C. S. A. Post office Dept. Signed B. N. Clements Chief of the Finance Bureau on 3c Star die Pmk. Richmond, Va. and Free V. F. (U27) —
- 276 ☒ C. S. A. Post office Dept. A. Dimitry, Chief of the Finance Bureau, on 3c U. S. Entire, Pmk. Richmond, Va. and Free, Extremely fine (Photo) (U10) —
- 277 C. S. A. Post office Dept. Finance Bureau, printed form which accompanied shipment of 1000-10c Stamps to Hales Ford, Va. Dec. 1, 1864, signed A. Dimitry, pristine —
- 278 ☒ C. S. A. Post office Department Chief of the Contract bureau altered Imprint on 3c U. S. star die, unused, V. F. (U27) —



JOHN A. FOX

MAY 24th, 1955

- 279 **C. S. A. Auditors office imprint on legal cover, 10c blue 4 margins tied Marshall, Tex., Signed D. F. SHALL, rare signature of auditor of Trans-Miss. Post office Dept. V. F.** (11) —
- 280 **C. S. A. Agency Post Office Dept., Trans-Miss. official Business, signed Jas. H. Starr agent, addressed, not Pmk. Extremely fine (Photo) (U27)** —

SEMI-OFFICIAL ENVELOPES

- 281 **Confederate States of America Presidents office, rare imprint, 10c Blue, Type I, canc. grid, addressed to Genl. R. E. Lee by Pres Davis highly historical, a great rarity, V. F.** (11) —
- 282 **Confederate States of America Executive Dept., stamp torn off cover, Pmk Richmond, Va. Addressed by Jefferson Davis** —
- 283 **10c Blue Hoyer, 4 margins tied Richmond, Va. to cover bearing imprint Confederated States of America Treasury Dept., addressed to Govr. of Tenn, V. F.** (2) —
- 284 **Confederate States of America Treasury Department, Imprint on legal cover, 10c blue in at bottom, tied Richmond, Va.** (11) —
- 285 **10c Deep blue, Type I, K & B Huge margins, tied Richmond, Va. Mar 15 (1865) Imprint Treasury Department C. S. A. Treasurers office, Extremely fine** (11) —
- 286 **Treasury Department Second Auditors office, in mss., covers front only, 10c blue, 4 margins tied Richmond, Va.** (11) —
- 287 **Confederate States of America, Treasury Department Imprint on small cover, 10c blue, 4 margins, tied Richmond Va.** (12) —
- 288 **War Department, Signal Bureau, 10c blue, 4 huge margins, tied Richmond, Va. cover small repair** (11) —
- 289 **Confederate States of America Adjutant and Inspector Generals office, Imprint on legal size cover, 10c blue tied Richmond Va., V. F.** (11) —
- 290 **C. S. Central Laboratory (ordn). Macon, Ga. 10c blue, tied Macon, Ga. Extremely fine** (12) —
- 291 **Confederate States of America Surgeon Generals offices, Imprint on legal cover, 10c blue tied Richmond, Va., V. F.** (11) —
- 292 **C. S. Nitre and Mining Service, imprint on cover, 10c blue, Type I, 4 margins tied Salisbury, N. C., Extremely fine** (11) —
- 293 **Christiansburg Va. in brown ties 10c blue, 4 Margins to cover bearing imprint Confederate States of America Nitre & Mining Service, V. F. (11)** —
- 294 **Paymasters office, Naval Station, Marion. C. H. S. C. unlisted Imprint, 10c blue, 4 margins tied Marion C. H. S. C. cover small defect.** (12) —
- 295 **Office of Ordnance and H'd'y, Virginia Navy State Seal of Virginia, cover Pmk. Richmond Va. Jul 3, 1861 and Paid 10, V. F. (Photo)** —
- 296 **Office of the Commissioner of Taxes, Imprint in Old English, 10c blue, 4 margins, tied Richmond, Va., V. F.** (11) —
- 297 **Confederate States, Head Quarters, Dept. of South Ca. Ga. & Fla., imprint on legal size cover, 10c blue, 4 margins, tied Charleston, S. C., V. F. (11)** —

STATE SEMI-OFFICIAL ENVELOPES

- 298 **State of Georgia Quartermaster-General's Office Imprint on immaculate entire, 10c blue, 4 margins tied Columbus, Ga.** (11) —
- 299 **Head-Quarters Georgia State Guard, imprint on repaired cover, 10c blue, 4 margins, tied Macon, Ga.** (12) —

- 300 ☒ Head-Quarters Georgia State Guard, Imprint on neat cover, 10c blue, 4 margins, tied Atlanta, Ga. (11) —
- 301 ☒ Conscript office, Camp Holmes, N. C. Imprint on neat cover, 10c blue tied blue Raleigh, N. C., Stamp gum stain (Photo) (11) —
- 302 ☒ State of North Carolina Executive Department, Imprint on blue cover, 10c blue, 4 margins tied Raleigh, N. C., stamp and cover stained (12) —
- 303 ☒ State Printing office Richmond, Va., State Seal 10c Blue, Cover addressed, not cancelled (11) —

THE FLAG-OF-TRUCE, PRISONER-OF-WAR,
AND SOLDIER'S COVERS

Under certain strict rules, letters were permitted to pass "through-the-lines" between the North and the South. Whether sent by or to Civilians or prisoners-of-war they were subject to examination, and had to be addressed via Fortress Monroe, Va. endorsed "per Flag of Truce". Often enclosed in outer envelopes bearing postage of the side from which sent, the inner envelopes bore the stamp of the other side, or were sent through postage due. Sometimes only one cover was used, bearing both stamps. Prisoner-of-war letters were usually endorsed "Examined" or so handstamped by the prison censor upon sending or receipt. "Through-the-lines" letters occasionally went by other routes or were secretly passed through. Soldiers letters could be sent "due" when endorsed with sender's rank and regiment.

- 304 ☒ P. O. W. Cover used to Germany via New York, 5c Green Confed. torn off, Pmk Salisbury N. C., Old Point Comfort, Va., numerous transit marks front and back, a famous cover (Photo) —
- 305 ☒ P. O. W. cover, Union Soldier, 5c green partly torn away tied Columbia S. C., Pmk. Old Point Comfort, Va. and due 3, Censor markings, V. F. (Photo) (1) —
- 306 ☒ 5c Local Print, 4 margins slight corner crease, tied Richmond, Va., mss. Flag of truce (7) —
- 307 ☒ Flag of Truce, Via Vicksburg, Miss., 10c blue, 4 margins, tied Jackson, Miss. Back of cover bears military permit for passing under Flag of Truce, rare & Extremely fine (12) —
- 308 ☒ P. O. W. Letter by Flag of Truce Boat, Mss. Marking, 10c Blue Type I, 4 margins, tied Savannah Ga., Paid and Pmk Port Royal, S. C. Sep. 5, 1864, Due 3, Extremely fine (Photo) (11) —
- 309 ☒ Union Soldiers Letter from the South, U. S. 3c 1861 tied Old Point Comfort, Confed. #12 tied mss. Captured from Rebs at Petersburg June 1, From the Knapp Collection (Photo) (65, 12) —
- 310 ☒ P. O. W. Cover, 3c 1861 and Confed 10c blue, tied Delaware City, Del. and Richmond, Va., North to South, mss. By Flag of Truce Boat via Fortress Monroe, cover immaculate (Photo) (65-11) —
- 311 ☒ P. O. W. cover, 3c 1861 slight defect and 10c blue Keatinge & Ball tied blue Patrick Va. and Old Point Comfort Va. cover slight stain used to Fort Delaware Rare use of K & B (Photo) (65-11) —
- 312 ☒ U. S. 3c 1861, Confed. 10c Blue tied Richmond, Va. to Extremely fine cover used to Columbus, Ga. (Photo) (65-12) —

- 313 Prisoners Letter, Elmira, N. Y. in oval, U. S. 3c 1861 and Confed. 20c green 4 margins, tied Elmira, N. Y. and Richmond, Va. mss. Flag of truce Rare use of 20c, Court of Honor Cover 1947 show (Photo) (65-13) —
- 314 P. O. W. Cover from Confed. Soldier 10c blue tied Richmond Va. and blue Martinsburgh, W. Va. and due 3 in Circle, rare (Photo) (12) —
- 315 P. O. W. Cover, Union Soldier in Castle Pinckney, 10c blue tied Charleston, S. C., Union postal Clerk tried to obliterate stamp (12) —

SOLDIERS COVERS

- 316 Lot Withdrawn
- 317 Andersonville and Due 10 a rare marking in black Circle (Photo) —
- 318 Soldier's Letter, Pmk orange C. H. Va. and due 10, mss. marking "no stamps to be had here", V. F. —
- 319 Soldiers Letter, Pmk. Rapid Ann Station Va. and Due 10, V. F. —
- 320 Soldiers Letter 10 in Circle V. F. Cover, A. N. Va. (army of Northern Va.) Longstreets Corp. —

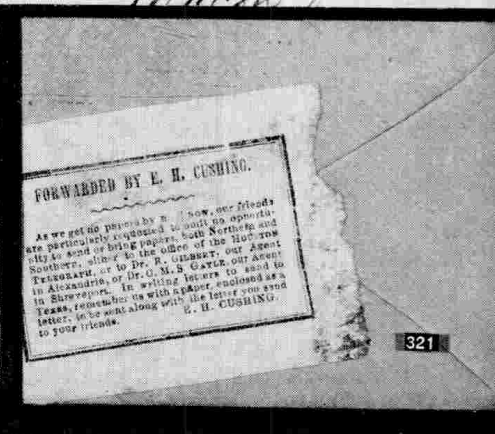
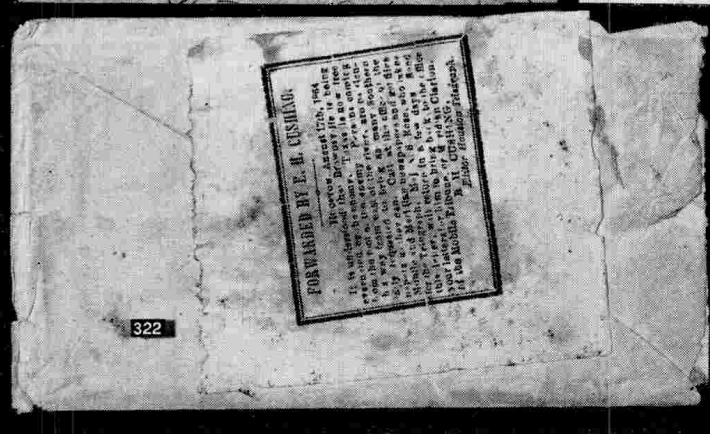
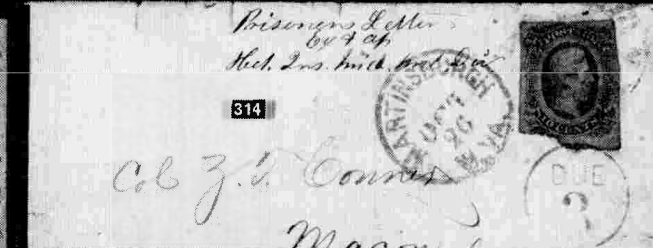
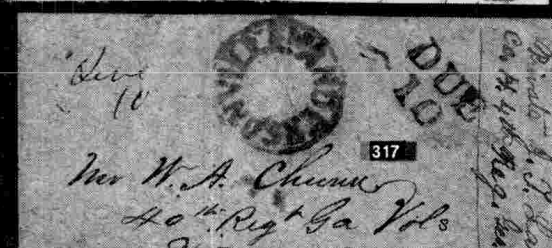
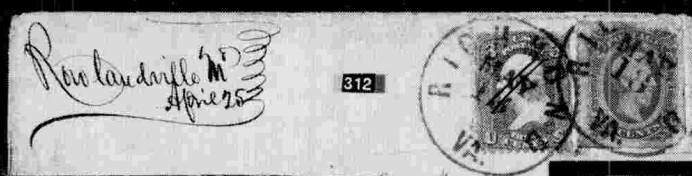
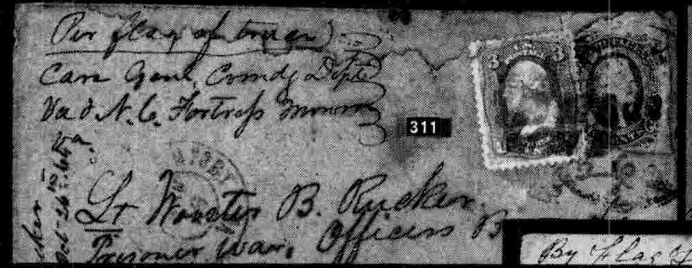
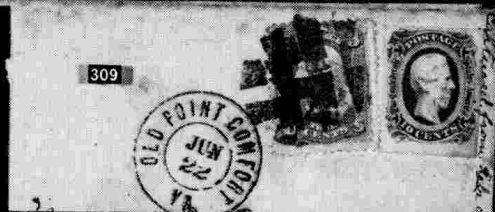
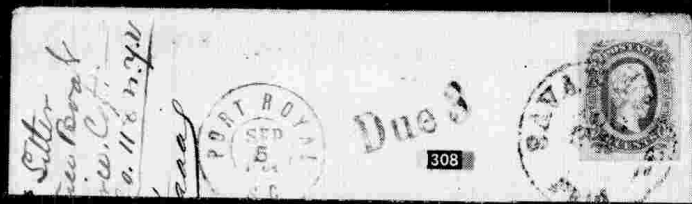
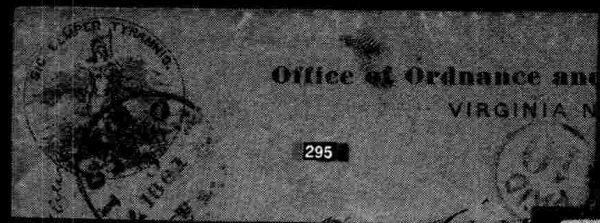
CUSHINGS-EDEYS EXPRESS

- 321 Cushings Express, Label Dietz type 1, on reverse of cover bearing horiz. pair 5c Local print, 4 margins tied Jackson, Miss. Extremely fine cover of great rarity (photo) (7) —
- 322 Cushings Express, Label Dietz type 4 on reverse of cover, 20c green defective not tied cover addressed to army Capt. at Richmond rare (Photo) (13) —
- 323 Cushings Express, Label Dietz type V on reverse of cover, 10c Blue 4 margins tied Selma, Ala., rare and Extremely fine (Photo) (11) —
- 324 Edey's Express, Label on reverse of cover to Washington City, Tex., 5c blue, damaged and 5c blue London print, not Canc. Rare cover (Photo) (4, 6) —

BLOCKADE COVERS

Mail to or from abroad went on blockade-runners, chiefly through the seaports of Charleston, Wilmington and Mobile. Such covers were usually postmarked STEAM or STEAM SHIP and an additional ship fee of 2c was charged. Mail also went across the blockaded Mississippi River by Government express at a special rate of 40c, some was secretly run out of captured cities such as New Orleans to Confederate points, and some went via Mexico, Cuba or the West Indies to or from the North or Europe.

- 325 Blockade Cover, from England via Nassau and New Orleans. Horizontal pair 5c green affixed at New Orleans, apparently did not do postal duty, cover canc. rare South Western Express Co. New Orleans, and carried to destination, a famous cover from the Knapp Collection (Photo) (1) —
- 326 Blockade Cover, Canc. oval Steam Ship, mss. 22 and Charleston, S. C. Mar. 12, 1863 from Liverpool England, Extremely fine (Photo) —
- 327 Mailed in Mexico, Pmk. Matamoros June 10 in rectangle 10c Blue, 4 margins tied Concrete, Tex. Carried across the border and mailed by regular mail. Extremely fine, Very rare (Photo) (11) —



TRANS-MISSISSIPPI EXPRESS MAIL

- 328 Trans-Miss., two pair 5c blue, single 10c blue type I, single 10c blue type II making 40c rate, tied Shreveport, La., cover mss. via Shreveport & Meridian, stamps cut in a rare cover (Photo) (6, 11, 12) —
- 329 Trans-Miss.-10c Blue, 4 singles one defective, canc. mss. Shelby Springs, Ala, 30th Oct. 1863, tied Meridian, Miss., mss. to be forwarded by the Trans Miss Express Mail to Shreveport La., cover repaired tear, V. F. appearance (Photo) (11) —
- 330 Trans-Miss, Horiz. strip 10c blue, 4 Margins, tied Hicksford, Va. and Brazoria, Texas on overall design advertising cover, mss. Express mail via Shreveport or Alexandria, From the Curtis Collection a magnificent cover (Photo) (11) —
- 331 Trans-Miss., 10c blue, strip of 3 and single, 4 margins, tied Columbus, Miss., one stamp small surface scrape, Cover used to Texas, V. F. (Photo) (12) —
- 332 10c Deep blue, Type II, Keatinge & Ball, Vert. strip of 4, tied Richmond, Va. on Trans Mississippi Cover, Mss. By Express mail via Meridian plus Trans-Mississippi, cover slight repair one of the outstanding rarities of the sale (photo) (12) —
- 333 Trans-Miss., 20c Green, 2 copies tied Richmond, Va., mss. Per Express via Brandon, Miss., V. F. (Photo) (13) —
- 334 20c Green, Horiz. pair, tied Mobile, Ala., stamps and cover show defects, rare mss. marking Trans Miss. Depot (Photo) (13) 250.00
- 335 10c Blue, Type I, tied Shreveport, La. Apr. 22, 1865 to Tyler, Texas, late use of Trans-Miss. Mail after fall of the Confederate Govt., rare & V. F. (11) —

WHEN THE RAILWAY EXPRESS WAS THE U.S. MAIL

General Lee surrendered on April 8th, 1865, and soon thereafter came the breakup of the Southern Confederacy. It ceased to function as a political unit and Northern armies were scattered throughout its territory. The Post Office Department was totally obliterated and for some unknown reason the U. S. mail service failed to take its place, even as late as the middle of 1866.

This breakdown of the communications system worked a great hardship throughout the South for families and friends had become separated. The only means of transporting letters was by Express Companies which maintained their offices and continued to function. The largest of these companies was the Southern Express Company, an affiliate of the Adams Express Co. which had been formed at the beginning of the war with headquarters at Memphis and with branch offices in the larger cities. Other companies were the Pioneer Express, the American Express, the Parker Express, and one or two very small ones that operated in conjunction with Southern in limited areas. These companies offered the only safe method of sending mail. The rate for a letter was two shillings, or twenty-five cents in the South and four shillings on letters from Northern points. It is a curious fact that the rate was in English shillings even to following the English method of writing it.

Even the Express companies could not always find the addressee. In the year 1869 the head Office of the Southern Express of Memphis recalled all letters and packages that had not been delivered. There were three gatherings

FORWARDED BY E. H. CUSHING.

Boston, Sept 13, 1866

The P. O. Department has not time to die, feeling that postage stamps, as they interfere with its business. We shall accordingly send no more at present. We respectfully ask all who can to bear no responsibility on paper, as we get none at all by mail. Soldiers and others using this may send on for a long time by holding out the paper, they can send forwarding to the place their arrival in the river. The French are in possession of Baltimore and Annapolis.

FORWARDED BY
ARTHUR H. EDEY, Agent, Fifth Reg't Texas Volunteers.

150

EXPRESS

CHARLESTON

REVERE

AUG 27 1866

REVERE

AUG 27 1866

100

EXPRESS

93

EXPRESS

To be forwarded by the Trade
Ward Express Mail to
Shrewport La
P.M. at Shrewport will
please forward immediately.

Shelby Springs
La

Major Charles B. Moore

333

333

Major W. H. Keating

By Express mail via Meridian Miss

E. H. Martin Exp

334

Ben Allston

E. Kirby Smith

West India Steamer

Messrs J. C. & A. G. North

Wilmington

N.C.

327

CONCERN

JUN 10

John G. Stock

100 Washington

Texas

of these "Unclaimed Valuables", the first on May 18, 1869, the second June 10, and the last one on August 10. As these letters were returned the cashier posted on the back a large label showing the addressee and the office from which returned. The labels were different for each gathering—the first in white, and the latter two in red but with a different inscription.

Thus in 1869 all these mute witnesses of the chaos of the Great War and the days of the Express Mail were garnered into one place. How long they were stored and their eventual disposition is not known, but fortunately a few reached the hands of philatelists interested in the history of this troublesome period.

The following lots contain the finest collection of these covers ever offered at public sale.

- 336 10c Blue, Keatinge & Ball and U. S. 3c 1861, each tied June 7 (1865) Marshall, Tex., sender used both not knowing which would carry. Extremely fine (Photo) (65-12) —
- 337 Mails Suspended in oval plus cannot be found in rectangle, cover cancelled target 3c Entire, cover front only (Photo) (U34) —
- 338 Adams Express Co. Brownsville Texas, 3 straight lines in deep blue, possibly only recorded example, 3c 1861 tied Cambridge Mass. Sep. 27 (1865) contents dated Harvard University, a magnificent cover, mss. 2/- Col. (Photo) (65) —
- 339 Adams Express Co. Mobile, Ala. in black oval mss. Sep. 15, 1865, and 2/-Paid V. F. (Photo) (U58) —
- 340 Pioneer Express, Mobile, Ala. Oct. 11, 1865 on 3c Pink entire V. F. (U58) —
- 341 Southern Express Co., Richmond Va., Aug. 16, 1865 in small double circle, mss. Paid 2/-, Extremely fine —

FIRST GATHERING MAY 18, 1869

- 342 Southern Express Co. Memphis May 18, 1869, large label on reverse of 3c entire, ms. Paid 2/- (U58) —

SECOND GATHERING JUNE 10, 1869

- 343 Adams Express Co. from Galveston, Texas on small red label, ms Paid 2/-, 12/21/65, reverse of cover large red Label, Southern Express Co. Memphis June 10, 1869, V. F. (Photo) —
- 344 Adams Express Company Galveston, Tex. Aug. 13, 1865 Paid 2/-, reverse red Label Southern Express Co. Memphis June 10, 1869 V. F. (Photo) (U59) —
- 345 Adams Express Co. Bowling Green Ky. Paid 2/- in small double circle and small oval Southern Express Co. Jul 31, 1866 Nashville, Tenn reverse red Label Southern Express Co. Memphis, June 10, 1869 rare V. F. (Photo) (U59) —
- 346 Parker's Express Co. Cairo, Ill. Paid 1/4, reverse of cover red Label Southern Express Co. June 10, 1869, rare, V. F. (Photo) (U59) —
- 347 Southern Ex. Co. New Orleans, La. May 9, 1866 in small blue double circle and Paid 2/-, reverse bears label Southern Express Co. June 10, 1869, Memphis, Extremely fine (U58) —

337
Richard A. Day
Baton Rouge

2/ Coll
ADAMS EXPRESS CO 338
BROWNVILLE
TEXAS

2/ Paid
ADAMS EXPRESS CO 339
Sep 15/05
MOBILE, ALA.

336
Gen. Heron

Paid 2/2
2070 1/2
343

ADAMS EXPRESS COMPANY,
MOBILE, ALA.
Gamberton Tex 344
3370/Jan'y 13/05

Pd. 25
Recd June 5/05
349

Paid 1/4
346

ADAMS EXPRESS COMPANY,
NEW ORLEANS, LA.
Recd June 16/05
352

Henry Jennings
U.S. Secy

Paid 1/4
351

Paid 4/4
Mr George W. Hill
Battery
348
Recd July 20/05

345
William Birch
U nice
Chicot la
Arb
Care
John Connor
at Saffington place

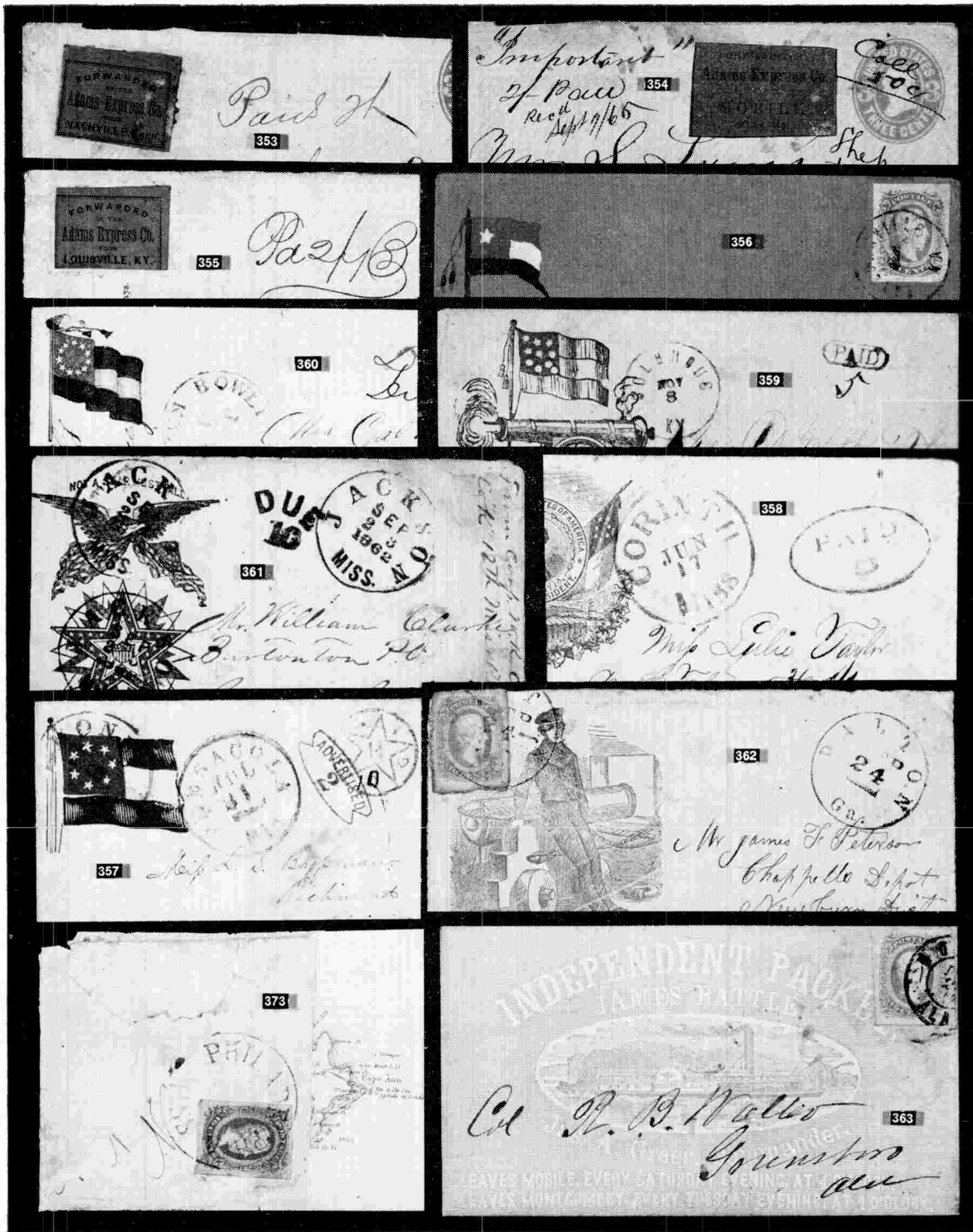
THIRD GATHERING AUGUST 10, 1869

- 348 Adams Express Co. St. Louis Mo. small yellow label plus mss. Paid 4/-, Jul. 20, 1865 reverse red Label Southern Express Co. Memphis, August 10, 1869, V. F. (Photo) (U58) —
- 349 Adams Express Co. New Orleans Louisiana in small red label, ms. Pd. 25, June 5, 1865, reverse red label, Southern Express Co. Memphis Aug. 10, 1869, Extremely fine (Photo) (U58) —
- 350 Adams Exp. Co. New Orleans, La. May 3, 1865 in small double circle, mss. Pd 2/- May 4, 1865 reverse red label Southern Express Co. Memphis Aug. 10, 1869, V. F. (U58) —
- 351 Southern Ex Co. Richmond Va. Apr 6, 1866 in small double blue circle, mss. Paid 2/-, red label on reverse Southern Express Co. Memphis, Aug. 10, 1869 Extremely fine (Photo) (U59) —
- 352 Adams Express Company New Orleans, La., mss. 2/- Pd., Southern Express, Memphis, August 10, 1869 red label on reverse (Photo) (U58) —
- 353 Adams Express Co. Nashville, Tenn. small label and mss. Paid 2/-, reverse red label Southern Express Co. August 10, 1869, V. F. (Photo) (U59) —
- 354 Adams Express Co. Mobile, Alabama small red label Mss 2/- Paid, Sep. 7, 1865 and Coll 50c, reverse red label Southern Express Co. Memphis Aug. 10, 1869 (Photo) (U59) —
- 355 Adams Express Co. Louisville, Ky., yellow label mss Pd. 2/-, label in red on reverse Southern Express August 10, 1869, Extremely fine (Photo) (U58) —

PATRIOTIC COVERS

Covers manufactured in the Confederacy bearing Patriotic designs, are far rarer than their Northern counterparts, largely because of shortage of supplies and manpower in the South. As many envelopes bearing Confederate designs were printed in the North and sold as "Rebel souvenirs", very few other than covers showing actual postage usage in the Confederacy can be accepted as genuine. Matching Patriotic lettersheets are rarely found, but home made Patriotic covers are occasionally seen, as are Patriotic labels or stickers. Covers bearing Confederate flags are the commonest, with their stars reflecting the growing number of the seceded states, while Cannon, Soldiers, Tents, Portraits, and other Patriotic designs also exist. Captured Northern Patriotic covers postally used in the Confederacy, are occasionally found.

- 356 Patriotic Cover, Handpainted in color, on neat cover, 10c blue, 4 large margins tied Taylorsville, Va. Extremely fine (Photo) (11) —
- 357 Pensacola, Fla. Provisional on seven star Patriotic in full color, Dietz Type 1, plus Advertised 2, a rare cover in Extremely fine condition (Photo) —
- 358 Eight stars, Jeff Davis, Patriotic slight defect at left. Pmk. Corinth, Miss. Jun 17, and large oval Paid 5 (Photo) —
- 359 Ten Star Flag, Cannon and verse in purple in Extremely fine cover pmk. Columbus, Ky. and Paid 5 (Photo) —
- 360 11 Star Patriotic in Full Color, neat Cover Pmk. rare blue Bowling Green, Ky. (Photo) —



JOHN A. FOX

MAY 24th, 1955

- 361 ☒ Captured Union Patriotic in full color, Pmk. Jackson, Miss. Sep. 23, 1862 and due 10 canc. also used to obliterate Union design, V. F. Historical (Photo) —
- 362 ☒ Captured Northern Patriotic Naval design in blue, 10c blue, Type I, tied Dalton, Ga. rare and V. F. (Photo) (11) —

PACKET BOAT

- 363 ☒ Independent Packet, James Battle, overall design, 10c Blue, Type I, four margins tied Mobile, Ala., Extremely fine (Photo) (11) —

TURNED and HOMEMADE COVERS

Shortage of paper in the Confederacy was the cause of turning envelopes inside-out for re-use a second and sometimes a third time. It also resulted in envelopes being made at home out of any available paper. Wall-paper, book pages, maps, checks, forms and wrappers of all kinds, if printed only on one side, were often so used.

TURNED COVERS

- 364 ☒ 10c Paterson, Stone "Y" 4 margins, tied blue Columbia, S. C. on turned cover, other side Horiz. pair 5c London, 4 margins nicely tied Georgetown, S. C. V. F. (2, 6) —
- 365 ☒ Turned Cover, 10c Blue, strip of 3 huge margins, tied Montgomery, Ala., other side single 10c Blue, in at bottom tied Richmond, Va. V. F. (11, 12) —
- 366 ☒ Turned Cover, Used three times, Stamps tied Dublin, Va. and Fairfield, Va., First sent to Rockbridge, Va., reversed and sent back, then reversed and remailed to Rockbridge V. F. (11, 12) —
- 367 ☒ Turned Cover, 10c Blue, Type I, four margins, tied Savannah, Ga., other side 10c blue, Type II, 4 margins, tied Villa Rica, Va., early impressions, Extremely fine (11, 12) —
- 368 ☒ Turned Cover, Livingston, Ala. Paid 10, inside, 10c blue type II, 4 margins, tied Staunton, Va. Extremely fine (12) —
- 369 ☒ 10c Blue, Type II, Horiz. strip of 4, full margins tied green Lynchburg on turned cover, inside is a Printed Southern Express cover, rare and V. F. (12) —

HOMEMADE COVERS

- 370 ☒ Homemade Cover, made from a sheet from an account book of C. "F", 13th Carolina Volunteers, 10c Blue tied blue Columbia, S. C., 4 margins, Fwd. Cover also canc. red canc., V. F. (11) —
- 371 ☒ Homemade Cover, made from printed timetable, 10c blue, type II, canc. grid not tied, V. F. (photo) (12) —
- 372 ☒ Homemade Cover, made from Circular advertising religious books and papers, 10c blue type I, 4 margins, tied Sumter, S. C. Extremely fine (Photo) (11) —
- 373 ☒ Homemade Cover, made from printed map, 10c blue, type I, 4 margins, tied Philadelphia, Miss. Extremely fine (Photo) (11) —
- 374 ☒ Homemade Cover, made from printed handbill, 10c blue 4 margins tied Adams Run, S. C. Extremely fine (Photo) (11) —



JOHN A. FOX

MAY 24th, 1955

- 375 ☒ Homemade Cover, from printed Check, 10c blue, 4 margins tied on reverse of cover by Branchville, S. C. V. F. (Photo) (1) ---
- 376 ☒ Homemade Cover, made from broadside advertising River Steamers showing picture of Steamer Calhoun 2 singles 10c blue, 4 margins, tied Rome, Ga. (Photo) (11) ---
- 377 ☒ Homemade Cover, made from front of southern song sheet, in vivid colors, 10c blue type I, 4 margins tied Richmond, Va., a magnificent specimen (Photo) (11) ---
- 378 ☒ Homemade Cover, 10c blue, K & B, type I, 4 margins, tied Charleston, S. C., Cover made from ledger sheet, Extremely fine (11) ---

WALLPAPER COVERS

- 379 ☒ Wallpaper Cover, fancy design in color, 10c Blue, type I, 4 margins tied Sparta, Ga. Extremely fine (Photo) (11) ---
- 380 ☒ Wallpaper cover, brilliant colors, 10c blue, type I, 4 margins tied Wilson, N. C. Extremely fine (Photo) (11) ---
- 381 ☒ Wallpaper Cover, figured design, 10c Blue, type II, 4 margins, tied La Grange, Ga., Extremely fine (Photo) (12) ---
- 382 ☒ Wallpaper Cover, fancy figured design, 10c blue type II, 4 margins, tied bright red Greensborough, N. C., Extremely fine (Photo) (12) ---
- 383 ☒ Wallpaper Cover, fancy figured design in color, 10c Blue type II, 4 margins tied Statesville, N. C. Extremely fine (Photo) (12) ---
- 384 ☒ Wallpaper Cover, Figured design, 10c Blue cut close, tied Uniontown, Ala. V. F. (Photo) (12) ---
- 385 ☒ 10c Dark Blue, K & B, 4 large margins, tied Hazlehurst, Miss. on Wallpaper Cover, Extremely fine (12) ---

END OF SALE — THANK YOU

Please Use Airmail

MEMORANDUM

COMING SALES!

JUNE

A magnificent array of United States Stamps and Covers including 1847s, 1869 Issue, Re-issues, Special Printings, 1869 Inverts, Blue Papers complete and rare Coil Pairs.

An Old Time Dealer's stock of Foreign, cataloguing well over \$100,000.00



SEPTEMBER

The A. P. S. Convention Sale at Norfolk, Va.



OCTOBER

The Ernest R. Jacobs Collection of United States in Superb Condition.

Catalogs now in preparation

JOHN A. FOX

116 NASSAU STREET

NEW YORK 38, N. Y.