

H.R. HARMER



EST · 1940



FINE STAMP AUCTIONS

Sale 3045

The Ing. Pietro Provera Collection
of United States Stamps and Postal History
Part II



June 22, 2021
New York City

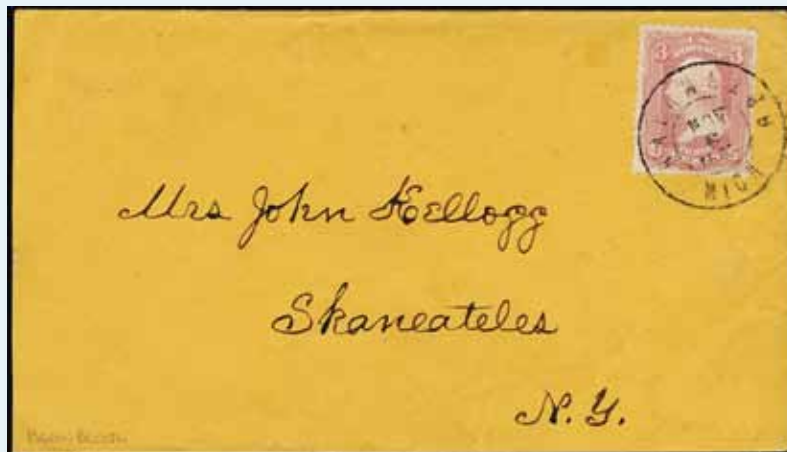
H.R. HARMER

EST • 1940

FINE STAMP AUCTIONS

Sale 3045

The Ing. Pietro Provera Collection
of United States Stamps and Postal History (part II)



Exhibition of Lots

By Appointment
H.R. Harmer, GPN, Inc.
45 Rockefeller Plaza, Suite 2607
New York, NY 10111
929.436.2800

Attendance by appointment only

Please contact our office if you would like to arrange viewing or in-person bidding.

Auction Date

Tuesday
June 22, 2021
10:00 AM Eastern
Lots 1001 to 1321

H.R. HARMER

EST · 1940

FINE STAMP AUCTIONS



Alfred H. Caspary



Franklin D. Roosevelt



Alfred F. Lichtenstein

Great collectors put their trust in H.R. Harmer...



The H.R. Harmer Auction Organization

CEO/Philatelist/Auctioneer

Charles Epting
NY License #2086265

Administration

Angela Linsinbigler
Alison Sullivan

Philatelists

Bill Bergstrom

Graphic Design

Thomas Rhein & Tonya Rhein

H.R. HARMER

EST · 1940

FINE STAMP AUCTIONS

H.R. Harmer · Global Philatelic Network · USA
45 Rockefeller Plaza, Suite 2607 · New York · NY 10111

www.hrharmer.com

Phone 929.436.2800

Introduction

The second part of the Ing. Pietro Provera Collection of United States Stamps and Covers picks up where we left off in December, with another superb offering of (primarily) 19th-century covers and 20th-century stamps. And, once again, it is the quality of this collection that resonates with me. A cover becomes much more than just an envelope when the stamp, cancel, and overall appearance work together in perfect harmony—the Pigeon Blood cover on the title page being a perfect example.

The Provera material, along with several other collections that have come into our office recently, have gotten me thinking about the importance of purchasing with your eye and your heart. The vast majority of this collection was purchased in the days before grading, and many demonstrate intangible qualities which cannot be distilled into a number. These stamps and covers simply speak to you.

The results of the first part of the Provera Collection spoke to the high quality of this material, and we anticipate that this catalogue will inspire similarly strong bidding. It has been a privilege to handle these stamps and covers, and we thank everyone who has helped make these sales successful through your participation.

Charles Epting
New York City
May 2021

Condition of Collections And Large Lots

OBVIOUS REPRINTS

Forgeries, fake cancels, and badly defective stamps are normally not included in catalog totals unless noted. However, as with any large group of stamps, some stamps may prove to be bogus, misidentified, or defective. Descriptions of quality are meant to apply to the overall condition of the lot. Lots described as being "mixed" quality or condition should be expected to contain some faulty material.

OWNER'S CATALOG VALUE

In some cases an "owner's catalog value" is given. Such a figure is just that. An owner's value may be useful as a guide but H.R. Harmer does not guarantee the accuracy of such a figure.

GUM

Stamps described as "mint" can be expected to have original gum (OG), but should be expected to be hinged unless specifically noted as never hinged (NH).

EXPERTIZING MARKS

We sometimes mention an expert's signature or guarantee mark on a stamp. However, while we believe that the vast majority of stamps so described are genuine, H.R. Harmer implies no warranty to that effect.

VALUATIONS

A Start Price is given for each lot. We do not accept any bids below the start price. All collection lots or lots containing in excess of 10 stamps offered in this auction are sold "as is" and are not returnable for any reason whatsoever. Please be certain to read the full Terms & Conditions of Sale at the rear of the catalog. All bidders will be bound by those Terms & Conditions of Sale.

SYMBOLS

- A – Autograph
- E – Essay
- P – Proof
- S – Specimen
- ★ ★ – Mint, never hinged
- ★ – Mint, hinged, or without gum as issued
- (★) – Mint, no gum (unused)
- ★, ⊙ – Mint & used
- ⊙ – used
- △ – on piece
- ✉ – cover

All bids are in U.S. dollars.

No bids below the Start Price will be accepted.

H.R. HARMER

EST · 1940

FINE STAMP AUCTIONS

H.R. Harmer · Global Philatelic Network · USA
45 Rockefeller Plaza, Suite 2607 · New York · NY 10111

www.hrharmer.com
Phone 929.436.2800

Bidding Bidding Increments

Bids of	Increase by
Up to \$100	\$5
\$100 to \$250	\$10
\$250 to \$750	\$25
\$750 to \$1,000	\$50
\$1,000 to \$2,500	\$100
\$2,500 to \$5,000	\$250
\$5,000 to \$10,000	\$500
\$10,000 to \$25,000	\$1,000
\$25,000 to \$50,000	\$2,500
\$50,000 to \$100,000	\$5,000
\$100,000 and up	Auctioneer's discretion

Bids that do not conform to the above increments will be reduced to the next appropriate bid. No bids accepted below the start price.

Limit Bids

Individuals who wish to restrict their total purchases to a fixed amount (not less than \$1,000) in any given auction may do so by advising us of the maximum amount they wish to spend. We will execute bids only until lots in the indicated limit are secured. The buyer's premium will be added to the total, after the limit has been reached. All estimates are in U.S. Dollars. All times listed are Eastern time (unless noted). A Buyer's Premium of 18% will be added to the hammer price of each lot.

Absentee Bidding

Bid directly on www.hrharmer.com and also by phone, fax, email or mail. Register now to start bidding at www.hrharmer.com.

Telephone Bidding

Telephone bidding for our auction is on a limited and priority basis only. If you are interested in telephone bidding, please contact our office at 929-436-2800 no later than 72 hours before the day of the sale, with your contact information and a list of the lots that you wish to bid on

Live Internet Bidding

We invite you to utilize live internet bidding via www.stampauctionnetwork.com for our sales. In order to bid during our live auction, you must be registered and approved for bidding with both Stamp Auction Network & H.R. Harmer. If you are registered at Stamp Auction Network, have been approved for bidding by H.R. Harmer and are ready to start bidding: Login at www.stampauctionnetwork.com, go to the Table of Contents for our sale, and select "Join the Public Auction in Progress." You will be assigned a paddle number and are ready to start bidding. Lastly, if you are bidding actively on a lot and the bidding has passed your maximum bid, kindly use the "Pass" button to help expedite the sale. Please note: Once a lot is announced as sold by the auctioneer on the floor, no late Internet bids will be accepted, nor will lots be reopened to the Internet once they have been sold on the floor. If you have any questions or concerns about Internet bidding or the registration process please do not hesitate to contact our office at 929-426-2800 or you can email us at info@hrharmer.com.

H.R. HARMER

EST · 1940

FINE STAMP AUCTIONS

H.R. Harmer · Global Philatelic Network · USA
45 Rockefeller Plaza, Suite 2607 · New York · NY 10111

www.hrharmer.com
929.436.2800

AUCTION AGENTS

US Auction Agents

Charles E. Cwiakala
1527 Fairview Ave.
Park Ridge, IL 60068-5211
Tel./Fax: 847-823-8747
CECwiakala@aol.com

Frank Mandel
P.O. Box 157
New York, NY 10014
Tel: 212-675-0819
Fax: 212-366-6462
busybird1@me.com

Nick Martin
Station Road
Sutterton
BOSTON
Lincolnshire PE20 2JH, England
Tel: 01205 460968
Fax: 07703 766477

Purser & Associates, LLC
P.O. Box 369
Bronxville, NY 10708
Tel: 857-928-5140
Fax: 781-658-2567
info@pursers.com

Overseas Auction Agents

Trevor Chinery BA
United Kingdom
Tel: 01205-330026
Fax: 01572-813226
trevortrilogy@aol.com

Jochen Heddergott
Bauerstrasse 9D-8000
München 40 Germany
Tel: 089-272-1683
Fax: 089-272-1685
mail@philagent.com

Lorenz Kirchheim GBR
Op de Höh 21
22395 Hamburg, Germany
Tel: 040-645-322-41
lorenz.kirchheim@t-online.de

H.R. HARMER

EST · 1940

FINE STAMP AUCTIONS

H.R. Harmer · Global Philatelic Network · USA
45 Rockefeller Plaza, Suite 2607 · New York · NY 10111

www.hrharmer.com
Phone 929.436.2800

Sale 3045
will be held online and at our H.R. Harmer office
Attendance by RSVP only

June 22, 2021



45 Rockefeller Plaza, Suite 2607 New York, NY 10111

H.R. HARMER

EST · 1940

FINE STAMP AUCTIONS

H.R. Harmer · Global Philatelic Network · USA
45 Rockefeller Plaza, Suite 2607 · New York · NY 10111

www.hrharmer.com
Phone 929.436.2800

Postmasters' Provisionals




1001

1003



LotNo

Start Price

- 1001**  **New York, NY, 9X1, 1846 5c Black, Signed ACM Connected**, pos 39 with portion of sheet margin at bottom, tied on a folded letter sheet addressed to Philadelphia by red square grid cancel with arced “PAID” handstamp and faint strike of “New-York/ 5 cts” 21 Jan cds, light strike of red “**Forwarded by Goodhue & Co. New-York**” oval handstamp (Rowe rarity 3), stamp full to large margins, Very Fine in every respect; *signed Holcombe*
Provenance: Alfred H. Caspary

250

View of New York City

- 1002**  **New York, NY, 9X1, 1846 5c Black, Signed ACM Connected**, pair, pos 3-4, tied by red arched “PAID” cancel on 1849 folded letter addressed to Cleveland, also canceled by two light strikes of red grid cancels with an accompanying “New-York 10cts 2 Feb” cds, pair with ample to large margins, a Very Fine and choice cover showing a late use of the provisionals; *signed Holcombe and with his 1992 certificate* (Scott \$2,000)
- 1003**  **New York, NY, 9X1e, 1845 5c Black, Without signature**, canceled by black pen strokes and just tied on an envelope addressed to East Windsor, Connecticut by a nice strike of the red arced “PAID” handstamp, accompanying red “New-York/ 5 cts” 3 Aug (1845) cds, ms “Paid” bottom left corner, stamp with full balanced margins, Very Fine; *signed Colla and with his 1992 certificate* (Scott \$1,375)

450**200**



LotNo

Start Price

1004 **

Providence, RI, 10X1, 1846 5c Black, rich color, full to large margins, o.g., NH, light natural gum bend, Very Fine and choice; *photocopy of 1991 Philatelic Foundation certificate for the block from which this single originated* (Scott \$350 for o.g.)

250



1005 ☒

Providence RI, 10X1, 1846 5c Gray black, margins large to very large including portion of adjacent stamp at top, neatly pen-cancelled, red "Providence R.I. Aug 25" cds (contents indicate 1847 sending) with usual matching straightline "Paid" and numeral "5", on cover addressed to New Bedford, Massachusetts, Extremely Fine, a choice example of the 5c Providence provisional on cover in sound condition and with four margins, Slater census number 48, *Philatelic Foundation certificate #14821 does not accompany* (Scott \$7,000)

*Provenance: Alfred Caspary
John R. Hill, Jr.*

2,500

1847 Issue (1-2)



View of New York City

LotNo

Start Price

- 1006 △ 1, 1847 5c Brown, tied on cover front addressed to Utica NY by red square grid with accompanying "New York Jan 30" cds, with Bouton's City Dispatch Post, New York NY, 2c Black on gray blue, Dots in corners (18L2) in the bottom left corner tied by light red "Paid/ Bouton" two-line handstamp, gins, tied by red square grid, stamps well-margined, front slightly trimmed around edges, Very Fine, one of five recorded 1847 and 18L2 combinations
Provenance: Guido Craveri

1,000



1007

1008

- 1007 ☒ 1, 1847 5c Red brown, two singles canceled together on a folded letter datelined "New York, May 31. 1850" and addressed to Iowa City, Iowa by red square grid with matching "New-York May 31" cds, manuscript "Paid" at lower left, each single ample to large margins, cover with couple trivial foxing spots, Very Fine cover to a scarce destination
Provenance: Guido Craveri
- 1008 ☒ 1, 1847 5c Red brown, tied by bold blue "Troy N.Y. 5 cts 16 Apr" cds on a blue envelope addressed to South Easton, NY, 1849 docketing at left; wax seal partly removed from reverse, stamp clear impression with ample to large margins, Very Fine cover from the McKie correspondence (Scott \$550)
Provenance: Guido Craveri

400

200



1009



1010

LotNo

Start Price

- 1009 ☒ 1, 1847 5c Red brown, deep shade tied on folded letter sheet addressed to Philadelphia (Ludlow Beebe) by blue circular grid with an accompanying blue "Baltimore Md. Aug 15" (1848) cds, stamp full to wide margins, Very Fine and choice; signed Ashbrook
Provenance: Philip Rust, "Como" Collection

200

- 1010 ☒ 1, 1847 5c Red brown, four full margins in a true "Brown" shade, struck by attractive blue "Philadelphia 5 May 26" cds (second strike alongside), addressed to Bellefonte, Pennsylvania, datelined 1849, vertical filefold well away from stamp, Extremely Fine gem with a particularly choice stamp, 1992 Colla certificate (Scott \$425 plus \$125 for blue town cancel)

150



1012



1011

- 1011 ☒ 1, 1847 5c Red brown, lovely four-margin single tied by red diamond grid with matching "New-York Apr 2" cds alongside, letter datelined April 2, 1850 and addressed to Naugatuck, Connecticut, Very Fine and attractive, 1990 Holcombe certificate (Scott \$425)

100

- 1012 ☒ 1 var, 1847 5c Red brown, Dot in "S" variety, tied on folded letter datelined "Keesville Feby 26 1849" and addressed to Windsor, Vermont by blue centrally struck "Keesville NY Feb. 27" cds with an additional strike at the left edge, stamp crisp impression and mostly large margins, letter with a central vertical file fold, Very Fine and rare as just four 1847 issue covers from Keesville are recorded
Provenance: Guido Craveri

300



1013



1014

LotNo

Start Price

- | | | | |
|------|---|---|-----|
| 1013 | ✉ | 1a, 5c 1847 Dark brown, tied to cover with small blue double-octagon "PAID" handstamp, blue "Philadelphia Pa. 5cts Sep 11" cds, neatly addressed to lawyer H. N. McAllister in Bellefonte, stamp well margined except just in at upper right, Very Fine, 1981 Dott. Enzo Diena certificate (Scott \$900) | 300 |
| 1014 | ✉ | 1a, 5c 1847 Dark brown, tied on folded letter datelined "Boston Nov 20th 1848" and addressed to Proctorsville, Vermont by red circular grid cancel, "Boston/ 5 Cts" 21 Nov cds adjacent, stamp rich color, large balanced margins, cover a light central vertical file fold, Very Fine and choice (Scott \$500) | 200 |

Battle Monument
in Baltimore


- | | | | |
|------|---|---|-----|
| 1015 | ✉ | 2, 1847 10c Black, four very large margins including portion of adjoining stamp at top and sheet margin at bottom, tied by blue "Baltimore Md. ? May" cds to cover to Providence, Rhode Island, matching blue "10" in oval at right, Extremely Fine and choice (Scott \$1,100)
Provenance: Jack Dick | 500 |
|------|---|---|-----|



LotNo

Start Price

1016

2, 1847 10c Black, tied by red circular grid on a folded letter sheet boldly addressed to Philadelphia, accompanying red "Pittsburgh Pa. May 24" cds, 1850 docketing on back side, neat "R" blue handstamp at center, manuscript "12" at bottom, stamp ample to large margins, cover refolded at bottom, still Very Fine.

500

Pratt General Store
in Spring Prairie



1017

2, 1847 10c Black, tied on folded letter datelined "New York 5th Oct 1847" addressed to "Spring Prairie W.T." (Wisconsin Territory) by strikes of red square grid, matching "New-York Oct. 5" cds, stamp full to large margins and with tiny internal wrinkles from wax particles underneath it, Very Fine appearance, scarce destination

Provenance: Guido Craveri

500



Mobile's Harbor

LotNo

Start Price

- 1018 ☒ 2, 1847 10c Black, position 42R, tied on commercial folded letter by red grid cancel, red "Mobile Ala. Aug 14" cds, originated in New Orleans and addressed to Philadelphia, stamp well margined each side, Very Fine and choice; 1992 Peter Holcombe certificate (Scott \$1,050)

350

Panorama of New Haven



- 1019 ☒ 2, 1847 10c Black, tied on cover by red grid cancel, red "New-Haven Ct 9 Aug" cds, enclosed correspondence from Benjamin Martin to his wife and child, including discussion of stamp purchase and mail schedule, stamp full margins incl a wide margin at left, F-VF; 1981 Dott. Enzo Dina certificate (Scott \$1,050)

350



LotNo

Start Price

1020



2, 1847 10c Black, cancelled with red grid handstamp, red "Macon Ga 10 Oct 19" cds, on folded letter to Charleston, SC, addressed to the agent of the packet ship "Sutton" care of E. Lafitte, the enclosed letter docketed *October 18, 1848* and containing shipping directions for merchandise; F-VF; 1999 *Philatelic Foundation* certificate (Scott \$1,050)

300



Eastport and Passamaquoddy Bay

1021



2, 1847 10c Black, tied on cover by two red grid cancels, red "Eastport Me. May 31" cds, "May 28, 1851" manuscript docketing within, addressed to dry goods merchants Smith & Boynton of New York, stamp showing all four framelines but cut close at top margin; 1998 *PSE* certificate (Scott \$1,050)

300



1022



2, 1847 10c Black, stamp with ample to large margins apparently tied on an 1848 folded letter sheet addressed to Wilkes-Barre Pennsylvania by red circular grid cancel, New York May 18 cds, stamp small tear at right, Fine appearance, stamp did not originate on this cover

100

1851 Issue (5-17)



LotNo

Start Price

- 1023 ✉ 7, 1851 1c Blue, Type II, strip of three tied to cover with black grid cancel, black "Baltimore MD Oct 29" cds, 1851 manuscript docketing; F-VF; 2000 Wolfgang Jakubek certificate

100




- 1024 ✉ 10, 1851 3c Orange brown, Type I, just tied on an oversized c.1850s Valentine envelope (255x218mm) by circular grid with an accompanying "Harrisburg Pa Feb 26" cds, intricate all-over design in bronze, with original enclosure showing elaborate "lace work" and a multicolor floral design (some age spots), some typical wear incl tiny nick at top but overall Very Fine and attractive

200



LotNo

Start Price

1025 

10, 1851 3c Orange brown, Type I, pos 97L1E, just tied on small ladies envelope addressed to Boston by black circular grid with a light strike of red "New London N.H. Jul 1" (1851) **date of issue double oval cancel**, numerous notations on the back side including (from the recipient) "*Nellies letter received July 2nd 1851, Answered July 4*", also (in Chases' hand) "*Paid in manuscript under thew stamp to indicate to the postmaster that the letter was to be sent prepaid. This was a common practice*", and (in the same handwriting) "*I remember no other July 1st 51 cover with a fancy postmark*", stamp clear to large margins, tiny portion of backflap missing, Very Fine and choice; 43 July 1 covers are known franked with the 3c issue (Scott \$12,500) 1989 Philatelic Foundation certificate
Provenance: Dr. Carroll Chase

4,000



1026



1027

LotNo

Start Price

1026 ☒ 10, 1851 3c Orange brown, Type I, two singles on folded letter sheet datelined "March 11th 1852" and addressed to New Orleans, each single with a black "Way" cancel, strong strike of red oval **Steamer S.W. Downs** handstamp (Milgram 1340), additional manuscript "Steamer S.W. Downs" diagonally at lower left, stamps just clear to large margins, letter with many h.r. incl some as reinforcement, light horizontal file fold at bottom, Fine

100

1027 ☒ 10, 1851 3c Orange brown, Type I, rich color and crisp impression, with large margins all around including portions of adjacent stamps at top and bottom, tied by lovely strike of "Cumberland Md. Oct 12" cds to folded letter to Hagerstown, Maryland, Extremely Fine and choice, the combination of stamp, cancel, and cover makes for a delightful item (Scott \$260)

75



1028



1029

1028 ☒ 11, 1855 3c Dull red, Type I, two singles tied on envelope addressed to Newark, New Jersey by nice strike of the **green Taunton, New Jersey** cds, stamps just clear to large margins, Very Fine; 1992 *Philatelic Foundation* certificate
Provenance: Theodore Gore
Marc Haas

100

1029 ☒ 11, 1855 3c Dull red, Type I, pos. 19L3, tied by sharply struck "Skaneateles N.Y. Jul 3" cds on 3c entire (U1) addressed to Newburyport, Massachusetts, stamp ample to full margins all around, backflap tear and portion missing, still Very Fine and quite attractive

60



1030



1031

LotNo

Start Price

1030 ☒

11, 1855 3c Dull red, Type I, tied to small ladies envelope with a floral design border on the address side and additional floral designs on three of the flaps on the back, tied by Lowell, Mass cds, stamp clear to ample margins, Very Fine and attractive

50

1031 ☒

11A, 1855 3c Dull red, Type I, pos 71R2L, tied on cover by blue Claremont, New Hampshire cds, stamp with fresh color and ample margins, Very Fine; 2000 Philatelic Foundation certificate

60



1032 ☒

12, 1856 5c Red brown, Type I, tied on folded prices current addressed to Intra, Italy by crisply struck "New Orleans, La. Jan 21 1857" cds, additional blue sender's handstamp, manuscript "per Atlantic via France", nice strike of black "N. York Am. Pkt/ 23/ Jan 31" debit postmark voided by black circular grid, re-directed via British packet noted by red "New York/ Feb 1/ Br Pkt" exchange office cds, indistinct red British transit cancel plus a black "GB/ 40c" accountancy marking applied in London, Calais entry cds, backstamped Torino transit and Intra 20 Feb 57, stamp a particularly attractive single with large to wide margins all around and rich color, cover with backflap slight tears, still an Extremely Fine and eye-catching cover and an excellent use during the short-lived "Three Months Rate" period; 2000 Philatelic Foundation certificate

Provenance: Saul Newbury
David Baker
Marc Haas
John R. Hill, Jr.
Michael Rubin

1,000



1033



1034

LotNo

Start Price

1033 ☒ **13, 1855 10c Green, Type I**, incredible single with large margins all around including sheet margin at bottom, tied by stocked-on-the-nose "San Diego Jul 9" cds to cover to Dorchester, Massachusetts, Extremely Fine, a superlative stamp on a fresh cover, a true gem

600

1034 ☒ **13, 1855 10c Green, Type I**, pair with enormous margins all around (apparent sheet margin at top), tied by crisp November 20 San Francisco cds to cover to Sherburne, New York, Extremely Fine and rare, particularly with such a beautiful pair of stamps, 1990 Philatelic Foundation certificate (Scott \$1,800 for used pair)

400

Scott Brothers Bankers in Yankee Jim's



1036



1035

1035 ☒ **14, 1855 10c Green, Type II**, single with four large margins tied by bold "Columbia Cal. Jan 10 1857" cds, on small cover to Bangor, Maine, Extremely Fine, scarce so nice

200

1036 ☒ **14, 1855 10c Green, Type II**, single with extraordinarily large margins, tied by crisp strike of "Yankee Jims Cal Feb 18" cds, on cover to Hanover, New Hampshire, Extremely Fine and attractive cover with a desirable California cancel (Scott \$190)

150



1037



1038

LotNo

Start Price

1037 ☒ **14, 1855 10c Green, Type II**, tied on an envelope addressed to Staples Ranch, California by "No Abington Mass Jun 16" double circle date stamp, stamp with large to wide margins, Very Fine in every respect; 1981 Philatelic Foundation certificate (Scott \$190)

75

1038 ☒ **15, 1855 10c Green, Type III**, pos 27L1, large to very large margins and wonderful bright color, tied by socked-on-the-nose "San Francisco Cal. 20 Dec" cds, on cover to Washington, DC, 1857 docketing at left, very slightly reduced at left, Extremely Fine and choice

75



1040



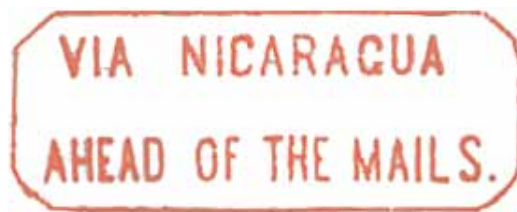
1039

1039 ☒ **15, 1855 10c Green, Type III**, single tied on envelope addressed to Royalston, Massachusetts by "Sonora Cal Jul 18 1857" cds, stamp full to large margins, envelope with a trivial bit of wear in the top right corner, Very Fine (Scott \$190)

50

1040 ☒ **17, 1851 12c Black**, pair tied on a yellow envelope addressed to Manchester, England by "Thompson Station NY" cds (indistinct date), red "America Liverpool Paid AU 11 56" transit, red "19" credit handstamp, stamps with clear to full margins, envelope a light vertical bend at right edge not affecting stamps, Very Fine (Scott \$750)

250




Transit route across Nicaragua 1851-1857



LotNo

Start Price

- 1041  **17a, 1851 12c Gray black, Diagonal half used as 6c on cover**, the top right half tied on a folded letter datelined "San Francisco 15 Aug 1853" and addressed to Boston by bold "New-York Sep. 9" cds, very lightly struck red octagonal "VIA NICARAGUA/ AHEAD OF THE MAILS" handstamp, manuscript "Via Nicaragua" which is also repeated in the dateline, stamp clear to full margins, letter a couple of vertical file folds, Very Fine (Scott \$5,000)


750

1857 Issue (18-39)

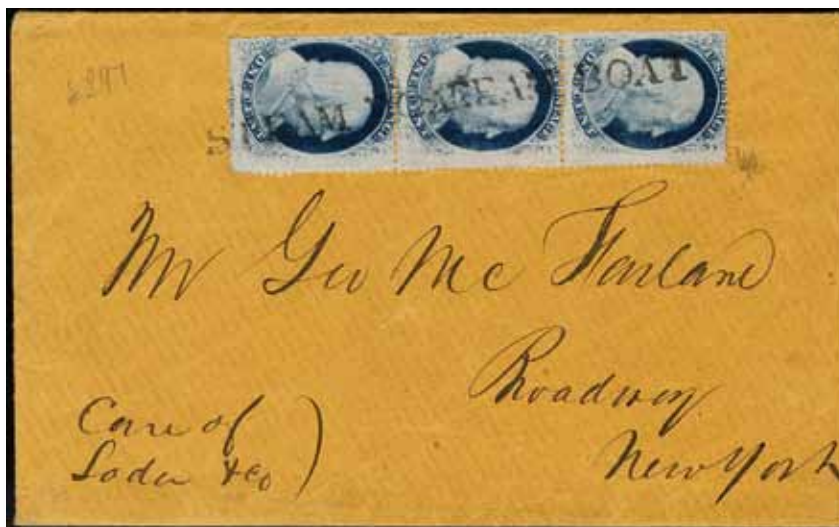


LotNo

Start Price

- 1042  **21, 1857 1c Blue, Type III**, well-centered single with a lovely deep color, full perforations showing wide breaks at both top and bottom, tied by neat small blue “Balto. Paid” postmark on December 1, 1857 circular to Providence, Rhode Island, Extremely Fine, a choice cover in every regard, 1980 *Philatelic Foundation* certificate (Scott \$2,000)



400



1044



1043

- 1043  **22, 1857 1c Blue, Type IIIa**, position 20L4, right margin single with wonderful centering for this difficult issue, beautiful color and impression, tied by a perfect strike of red “Bridgewater Feb 2 1859 Ms.” cds, addressed to St. Mary's, Ohio, Extremely Fine and remarkable in every regard, signed Ashbrook and 1987 *Philatelic Foundation* certificate (Scott \$525)
- 1044  **24, 1857 1c Blue, Type V**, vertical strip of three tied by black straightline “Steam Boat”, the stamps with enormous bottom and right margins, on cover to New York City, original contents datelined “Troy, New York December 9, 1859”, slightly reduced at right, still Very Fine and attractive especially with this lovely cancel, 1991 *Holcombe* certificate

200

200



1045



1046

LotNo

Start Price

- | | | |
|------|---|----|
| 1045 | 24, 1857 1c Blue, Type V, single with 1857 3c Dull red strip of three (26) canceled by black targets on lemon envelope addressed to Hanover, New Hampshire, clear "Woodside, Cal Apr 1" cds, envelope touch of edge wear, Very Fine | 75 |
| 1046 | ✉ 24, 1857 1c Blue, Type V, particularly well-centered single with large to huge margins, tied by lovely red "Providence R.I. Jul 11 1860" cds to locally-addressed drop cover, Extremely Fine, difficult to imagine a nicer 1857 1c Type V cover than this | 50 |



1047



1048

- | | | |
|------|--|----|
| 1047 | ✉ 26, 1857 3c Dull red, Type III, single tied on an envelope by crisp strike of blue "Burlington Vt. Jun 15" cds, nice ad for the "American Hotel" at upper left, Very Fine in every respect | 75 |
| 1048 | ✉ 26, 1857 3c Dull red, Type III, struck by blue grid with matching "Keene N.H. May 27 1861" cds, on flawless patriotic cover to Blackstone, Massachusetts, red and blue design of Lady Liberty holding a flag and sword at left, Extremely Fine, a choice cover for the most discerning of collectors, 1991 Philatelic Foundation certificate | 75 |



1049



1050

Start Price

LotNo

1049 ☒ 26, 1857 3c Dull red, Type III, tied by blue grid with matching "De Witt Mich Jul 18" cds at left, on patriotic cover to St. Johns, Michigan, with female with flag red and blue patriotic design, original contents on letterhead with matching design, Extremely Fine, a pristine and wonderful cover, particularly so with an 1857 issue (Weiss F-F 9, Walcott 2371)

75

1050 ☒ 26, 1857 3c Dull red, Type III, single tied by perfect strike of "Reed's Landing M.T. Apr 1" balloon-type cds, addressed to Adamsville, Pennsylvania, cover slightly reduced at left, still a Very Fine example of this rare town marking

60



1052



1051

1051 ☒ 26, 1857 3c Dull red, Type III, just tied by circular grid cancel on patriotic envelope with accompanying "Lowell Ms. Jul 11 1861" cds, waving flag design at left with "No Union with Traitors" vertical caption, trace of aging in lower corner, still Very Fine and quite attractive (Walcott 2954, Bischel 5333)

50

1052 ☒ 28, 1857 5c Red brown, Type I, single and pair tied folded letter sheet addressed to France by red circular grid cancels, a red "New York Paid 12 Sep 12" credit cds alongside, black French transit and large framed "P.D.", manuscript "p Africa", backstamped French transit and Nantes 25 Sept 60 arrival, stamps with fresh color, sheet with horizontal file fold, small vertical edge break at top between the single and pair and some trivial aging, Fine use; signed Holcombe and with his 1991 certificate

200



1053



1055

LotNo

Start Price

- 1053 ☒ **30A, 1860 5c Brown, Type II**, three singles tied by black grids, with matching "Peoria Ills. Jan 2 1860" cds alongside, cover addressed to Oldenburg, Germany and endorsed "per Hamburg Steamer", red "Paid N. York Brem. Pkt." cds, various backstamps, few small tears mostly confined to reverse, Very Fine and attractive, the 1860 year date is almost certainly in error as the 5c Brown Type II was not in use until several months later, 1988 Holcombe certificate
Provenance: Henry C. Gibson

150

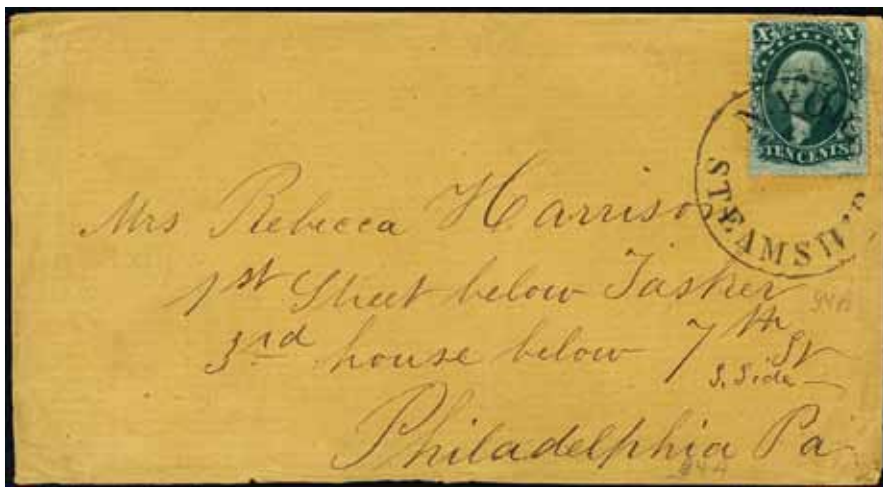


View of Hamilton

- 1054 ☒ **31, 1857 10c Green, Type I**, particularly choice single (position 95R1) with nice centering and bright color, tied by "Detroit Mich. Nov 6" cds to cover to **Hamilton, Canada West**, manuscript and red straightline "Paid" and matching "United States 6d" oval handstamp, various Canadian transit markings on reverse indicating an 1857 use (confirmed by dateline), Extremely Fine and choice cover from just a few months after this stamp was issued (Scott \$1,300 for domestic cover)
- 1055 ☒ **31, 1857 10c Green, Type I**, tied on small ladies" envelope with embossed design around the edges by partially struck cds, addressed to Nevada City, California, 1858 docketing on back side, opened and slightly reduced at right, envelope some light aging spots, Fine use (Scott \$1,300)
Provenance: Mortimer Neinken

500

150



1056



1057

LotNo

Start Price

- | | | | |
|------|---|--|----|
| 1056 | ✉ | 32, 1857 10c Green, Type II , fresh single tied by crisp and nearly-complete strike of "N. York Steamship" circular handstamp, addressed to Philadelphia, some light edge wear but still Very Fine and attractive | 75 |
| 1057 | ✉ | 32, 1857 10c Green, Type II , attractive single tied by near-perfect strike of Grass Valley, California cds, addressed to Machias, Maine, Very Fine, a wonderful early California cover | 50 |



1059



1058

- | | | | |
|------|---|---|-----|
| 1058 | ✉ | 33, 1857 10c Green, Type III , lovely single with attractive centering, tied by bold strike of blue "Cincinnati O. Jul 18" cds to cover to Alcatraz Island, San Francisco, Very Fine, a cover of exceptional quality in all respects
<i>Provenance: M. Hubert Judd</i> | 75 |
| 1059 | ✉ | 35, 1859 10c Green, Type V , two singles, including one with a large straddle pane margin (sliver of adjoining stamp, small pre-use tear at bottom), rich color and unobtrusive grid cancel, on pristine cover to Canada with matching "Detroit Mich. Aug 20 1861" cds, red "Paid" and numeral "20" handstamps, couple of backstamps, Extremely Fine, a wonderful double-rate cover | 200 |



LotNo

Start Price

1060

35, 1859 10c Green, Type V, single with a brilliant impression situated between exceptional margins, particularly at the left and right, tied by "Sacramento City Cal Aug 20 1860" cds to orange cover to Vermont, endorsed "Via Panama" at top left, reduced at left and ever so slightly at right, tear at bottom into address panel (sealed with tape on reverse), still Very Fine appearance and bearing an Extremely Fine stamp

100



1061

36, 1857 12c Black, Plate 1, pair tied on envelope addressed to England by "Fall River Ms. Jan 13 1860" cds, red "Paid Liverpool US Packet 60 JA 26" transit, bold "3" credit handstamp, backstamped Leeds JA 27 60, fresh and Very Fine; signed Jakubek and with his 2000 certificate (Scott \$850)

200



1062

36, 1857 12c Black, Plate 1, pair tied by red grids and matching July 10 New York cds to cover to Brechin, Scotland (receiver on reverse), cover with a bit of minor toning, still Very Fine and attractive

150



Alfred H. Caspary

LotNo

Start Price

1063 ☒

38, 1860 30c Orange. horizontal pair tied on 1864 folded letter sheet addressed to Lyon France (Payen correspondence with attractive calligraphic lettering) by red square grids, matching "New York Paid 48 Mar. 13" credit date stamp and French octagonal transit cancel, small framed "PD", backstamped French transit and arrival, left stamp a tiny sealed edge break at top, still Very Fine quadruple-rate cover to France

Provenance: Alfred H. Caspary

750



1064 ☒

38, 1860 30c Orange. canceled by circular grid on envelope addressed to Ziellhausen, Wurttemberg with a bold blue "Cincinnati O. Feb 2" (1861) double-circle date stamp alongside, red "N York Br Pkt Paid 7" exchange cds, manuscript "Prussian Closed Mail", and boxed "Aachen 19.2/ Franco" date stamp, backstamped Stuttgart 21 Feb 1861, well centered single, Very Fine; signed Holcombe and with his 1992 certificate (Scott \$1,350)

250

1861 Issue (63-78)



1066



1065

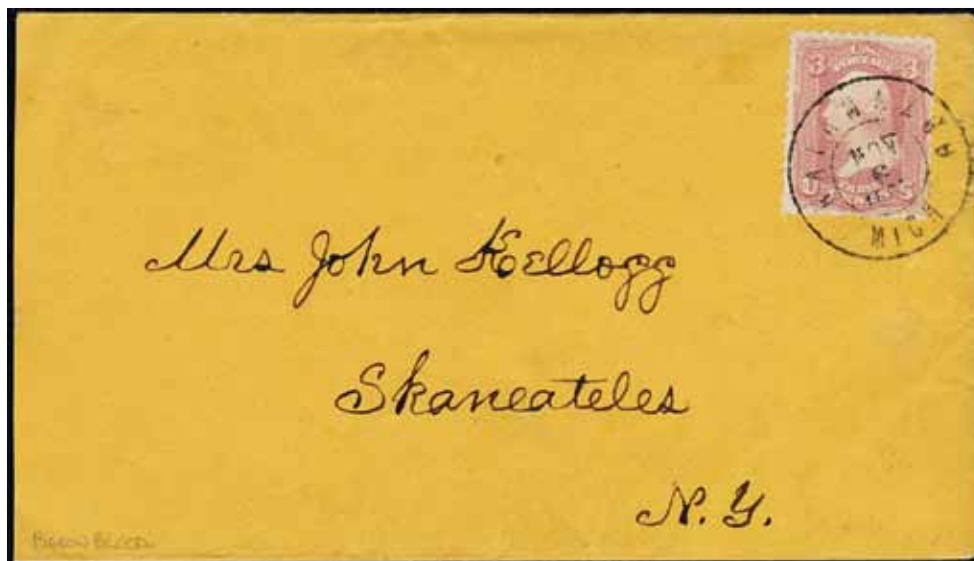
LotNo

Start Price

- 1065 ☒ **63, 1861 1c Blue**, canceled with 1861 3c Rose (65) by target cancels on "Liberty Bell" patriotic envelope, Magee imprint at left and backside with the 13-line text of "Memorial to Congress", cover with bit of discoloration lower left corner, otherwise Very Fine, a scarce carrier use (Walcott 2710)
Provenance: Jon E. Bischel
- 1066 ☒ **64, 1861 3c Pink**, vivid and fresh single in the true Pink shade tied by sharp "Galena Sep 17 Md" cds to orange cover addressed to Baltimore, as fresh and clean as if mailed yesterday, Extremely Fine, a delightful cover, 2004 *Philatelic Foundation certificate* (Scott \$775)

100

250



- 1067 ☒ **64a, 1861 3c Pigeon blood pink**, bright and vibrant stamp in the true "Pigeon blood" shade, very well-centered and tied by neat "Kalamazoo Nov 6 1861 Mich" cds to orange cover addressed to Skaneateles, New York, barely reduced at left, still Extremely Fine in every regard, a lovely stamp on a pristine cover, 1968 and 2000 *Philatelic Foundation certificates* (Scott \$5,000)
Provenance: Creighton C. Hart

1,000



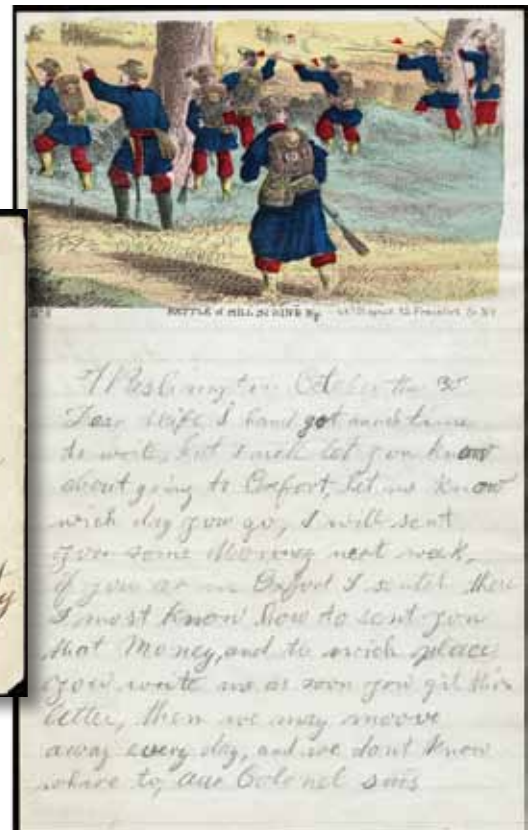
LotNo

Start Price

1068 ☒

64b, 1861 3c Rose pink, pair tied on large orange “Soldier’s Farewell” Civil War Valentine envelope with “New Orleans La Feb 11 1863” double circle cds below, addressed to Connecticut, couple of insignificant moisture spots in the address panel, overall Very Fine and wonderful cover

500



1069 ☒

65, 1861 3c Rose, tied by partially struck “Washington DC” postmark on multicolored Magnus Dual Panel patriotic envelope with Female, Flag and Triton plus Rhode Island seal, addressed to Belvidere, New Jersey, includes original enclosure (a Magnus patriotic letter sheet showing “Battle of Mill Spring Ky”), envelope with tiny bit of lower right corner clipped and some light aging along the bottom edge, still Very Fine and colorful.

On January 19, 1862, Confederate and Union forces clashed in the Battle of Mill Springs (near present day Nacy, Kentucky). When the smoke cleared, 150 Confederates and 50 Federal soldiers lay dead on the field and the Union had its first significant victory of the Civil War.

Provenance: Jon E. Bischel

400



1070



1071

LotNo

Start Price

1070 ☒ **65, 1861 3c Rose**, tied by "Washington DC Sep 1 1862" double circle date stamp to **Magnus multicolor 2-panel patriotic design** with Lady Liberty and the Smithsonian Institution, stamp with deep color, overall fresh and Very Fine, a rare and desirable Magnus patriotic (Walcott 676)
Provenance: George Walcott

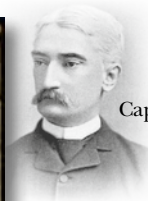
250

1071 ☒ **65, 1861 3c Rose**, stamp with bright color and exceptional margins all around, tied by wonderful strike of Albany, New York "U.S. in Wreath of Stars" fancy cancel (Skinner-Eno PT-C 17), on remarkably clean cover to Townsend, Mass, Extremely Fine, a stunning combination of stamp, cancel, and cover in such high quality, a true gem

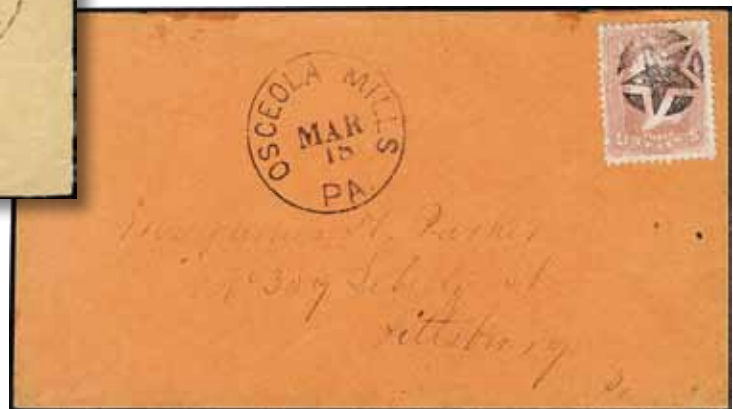
250



1073



Captain John Lathrop



1072

1072 ☒ **65, 1861 3c Rose**, crisp and complete strike of decorative star of Osceola Mills, Pennsylvania with matching March 18 cds alongside, bright stamp on clean orange cover to Pittsburgh, insignificant adhesive residue at top, still Extremely Fine and attractive (Skinner-Eno ST-S 10)

100

1073 ☒ **65, 1861 3c Rose**, tied on patriotic envelope addressed to "Capt John Lathrop/ Co J 35th Mass V/ Washington DC" by "Keedysville Md" cds (indistinct date), design shows a soldier with the British "Union Jack", cover a little bit of edge wear, Fine, described in the Bischel sale as "the only recorded example".
John Lathrop gave up a promising law practice to sign up with the Massachusetts Volunteers and was commissioned as a first lieutenant. He fought at South Mountain, at Antietam, and at Fredericksburg. He was promoted to a captaincy but in the autumn of 1863, he contracted malarial fever, which compelled him to resign for disability; and there upon he returned to Boston to resume his law practice. He was appointed a justice of the Supreme Judicial Court of Massachusetts in 1891 and served until resigning due to poor health in 1906.
Provenance: Jon E. Bischel

100



1075



1074

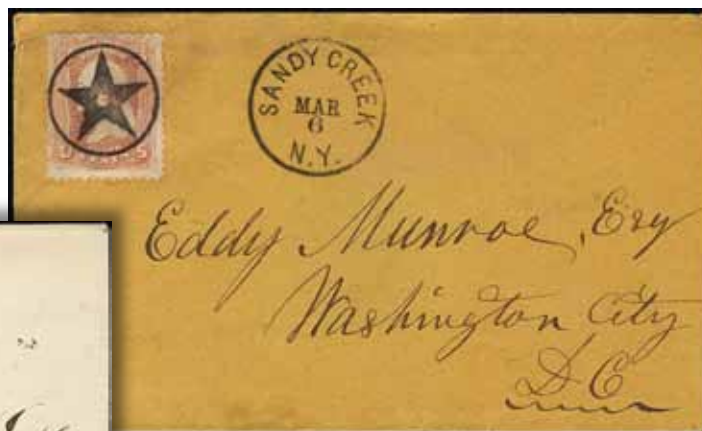
LotNo

Start Price

- | | | | |
|------|---|---|----|
| 1074 | ✉ | 65, 1861 3c Rose, beautiful stamp with excellent margins, struck by perfect impression of "ring of pearls" fancy cancellation (Skinner-Eno GE-C 4), similarly bold "Stillwater Aug 30 1861 Min." cds, cover addressed to Piqua, Ohio, Extremely Fine in every regard | 75 |
| 1075 | ✉ | 65, 1861 3c Rose, perfectly-centered single with bright and fresh color tied by bold blue "Baltimore Md. Sep 27" cds to patriotic cover addressed to Freedom Plains, New York, attractive Magee pillar and banner design, Extremely Fine (Weiss O-M 62, Walcott 1758 var) | 75 |



1076



1077

- | | | | |
|------|---|--|----|
| 1076 | ✉ | 65, 1861 3c Rose, tied on small envelope with multicolor Eagle and Shield design patriotic cover addressed to Philadelphia by centrally struck "Palmyra Pa Jan 28" cds, S.C. Rickards & Co imprint, Very Fine and choice (Walcott 2487) | 75 |
| 1077 | ✉ | 65, 1861 3c Rose, single tied by perfect strike of star in circle fancy cancel with matching "Sandy Creek N.Y. Mar 6" cds alongside, on orange cover to Washington, DC, slightly reduced at right, Extremely Fine and striking cover (Skinner-Eno ST-D 29) | 50 |



1078



1079

LotNo

Start Price

- 1078 ☒ 65, 1861 3c Rose, single tied by target with matching Lowell, Massachusetts March 2 cds, on dramatic "Our Cause Is Just, Fight On, Remember Ellsworth." patriotic cover addressed to New York City, Very Fine and attractive
- 1079 ☒ 65, 1861 3c Rose, tied by "Philadelphia Pa. May 2 1862" cds to spectacular advertising cover for "China, Glass and Queensware", with a pretty vase-shaped design at left, cover addressed Milroy, Pennsylvania, slightly reduced at left, still Very Fine and lovely

50

50



View of Podensac

- 1080 ☒ 67, 1861 5c Buff, with 1861 10c Green, 30c Orange (68, 71) on folded letter sheet addressed to Podensac, tied or canceled by black circular grids with an accompanying "San Francisco Cal Jan 3 1862" double circle postmark, additional red "New York Paid 21/ Feb 8" exchange postmark plus French transit and framed "P.D.", back side with several French transit and arrival postmarks, stamps with fresh colors, letter sheet a small sealed break at bottom, an otherwise Very Fine and attractive 3-color franking paying the triple 15c rate to France; 1990 Alex Rendon certificate (mistakenly identifies the 5c as #65)

500



SS 'City of Manchester'

LotNo

Start Price

- 1081 ☒ 68, 1861 10c Green, pair plus 1861 1c Blue (63) tied on envelope addressed to Mons, Belgium by Philadelphia Aug 12 (1864) cds, target cancel and light strike of a red Philadelphia Paid 12 exchange marking, black framed "P.D." and French transit cancel, backstamped "France Par Mouscron" transit and Mons 29 Aout 64 arrival, small backflap faults, fresh and Very Fine; 21c rate to Belgium via French mails, carried on the Inman Line "City of Manchester"

150



1083



1082

- 1082 ☒ 68, 1861 10c Green, two slightly overlapping singles plus 1861 1c Blue straddle-pane single (63) tied on folded letter sheet addressed to Grandson, Switzerland by black circular grid cancels, additional red New York Paid 12 exchange cds, French transit and framed "PD", manuscript "pr Hansa", backstamped Paris A Belfort, Neuchatel and Grandson 25 Avr 63 arrival, light horizontal file fold, small foxing spot in address, Very Fine, proper 21c rate to Switzerland via French mail; signed "ED" (Enzo Diena) and with his 1980 certificate

150

- 1083 ☒ 68, 1861 10c Green, well-centered single tied by fancy star in circle with dots, matching "Union Springs N.Y. Aug 13" cds alongside, on cover to "Oil Springs, Lambton Co., CW", backstamped with rare "G.W.R. West/ Sarnia Branch" railroad postmark, Very Fine (Skinner-Eno ST-D 51)

75



Augustine Heard



LotNo

Start Price

1084 ☒

70a, 1862 24c Brown lilac, two well-centered singles alongside 1861 3c Rose (65), neatly tied by two crisp strikes of large Boston "Paid" in circle to cover to **Hong Kong**, endorsed "*p Str Niagara Via Marseilles*", red London transit handstamp, manuscript "*30*" rate marking, red "Boston Am. Pkt. Paid May 28" backstamp alongside black Hong Kong arrival, professionally cleaned, an Extremely Fine and wonderful cover from the Augustine Heard correspondence, 1993 Holcombe certificate

500



1085 ☒

70a, 1862 24c Brown lilac, two slightly overlapping singles tied with 3c Rose (65) on folded letter datelined "*Boston Sept 24th 1862*" and addressed to **Shanghai, China** (Augustine Heard correspondence) by light strikes of large Boston "Paid" cancels, manuscript "*Overland via Marseilles*" routing, red London transit, penciled "*30*" rate and "*1*" colonial credit markings, back side with red "Boston Am Pkt Paid Sep 26" exchange cds and Hong Kong NO 23 62 arrival cds, light soiling along a central horizontal file fold, overall Very Fine and attractive cover paying the 51c rate by British mail via Marseille

Provenance: Alfred H. Caspary
Ryohei Ishikawa

300



Ships off the coastline



LotNo

Start Price

1086 ☒

71, 1861 30c Orange, two singles alongside two 1861 3c Rose (65), all tied by black grids, on cover from New Orleans to Zofingen, Switzerland, black "New Orleans La Jul 10 1863" and red "Paid N. York Hamb. Pkt. July 12" cds, various European transit/arrival handstamps, a Very Fine and interesting cover, accompanied by a letter from Melvin W. Schuh to Mortimer L. Neinken (June 19, 1962) discussing this cover, *1984 Philatelic Foundation certificate*

This cover was prepaid 66c to cover double the 33c rate by Prussian Closed Mail. This was the highest possible rate so that it could be sent by the earliest available steamer, which ended up being a Hamburg Packet. This letter was overpaid by 28 cents, as the rate via Hamburg was 19c (38c for double rate). Of the 38c the United States retained 10c for internal postage, so the manuscript "28/2" indicates 28c credited to Hamburg for a double rate letter. The majority of mail sent to Switzerland was carried by Prussian Closed Mail or French mail, making this a particularly interesting specimen.

Provenance: Edward S. Knapp

500



1087



1088

LotNo

Start Price

1087 ☒ **71, 1861 30c Orange**, tied by bold waffle grid to fresh cover to Paris, with red "Boston 0 Jan Paid 24" cds and red French exchange cds and boxed "PD", Very Fine and choice (Scott \$380)

100

1088 ☒ **71, 1861 30c Orange**, tied with 1861 3c Rose (65) on envelope addressed to Switzerland by cork cancels, bold "St Louis Mo. Jul 30" (1866) double circle postmark, red "New York Am Pkt" transit and "12" credit handstamp, magenta manuscript "12" credit, boxed "Aachen Franco" transit date stamp, backstamped various transit and an Ambri arrival cancel, the 3c single light corner crease, cover bit reduced at top with backflap missing, Fine use showing the 33c Prussian Closed Mail rate

100



1089



1090

1089 ☒ **71, 1861 30c Orange**, bold strike of quartered cork on an attractive stamp with balanced margins, red "New York Paid 24 May 4" also ties stamp to 1867 cover to Allier, France, red May 3 embarkation datestamp applied in New York Harbor, several transit backstamps, Very Fine and fresh cover (Scott \$380)

75

1090 ☒ **71, 1861 30c Orange**, single tied on small envelope addressed to France by black waffle cancel, red "Boston Paid 12" (1865) exchange cds, red French transit and boxed "PD", backstamped several French transit plus Orleans arrival, Fine and attractive; signed Colla and with his 1992 certificate (Scott \$380)

75



1091



1093

LotNo

Start Price

1091 ☒

73, 1863 2c Black, single tied by geometric cancel on envelope with ornate all-over ad in gray for "Try The French Breakfast and Dinner / Real American Tea Company" ad, design features a figure in a turban serving "Superfine Old Government Coffee Arabica", Reagles imprint on backflap, Very Fine, one of the scarcest designs of this company's advertising series
Provenance: Steven Metzger

100



1092 ☒

73, 1863 2c Black, tied on locally addressed oversized **Valentine's envelope** (200x132mm) by "Carlisle Pa Feb 14 65" double circle postmark, ornate embossed design surrounds the address panel, few trivial age spots and a small scuff on the back side, overall Very Fine

100

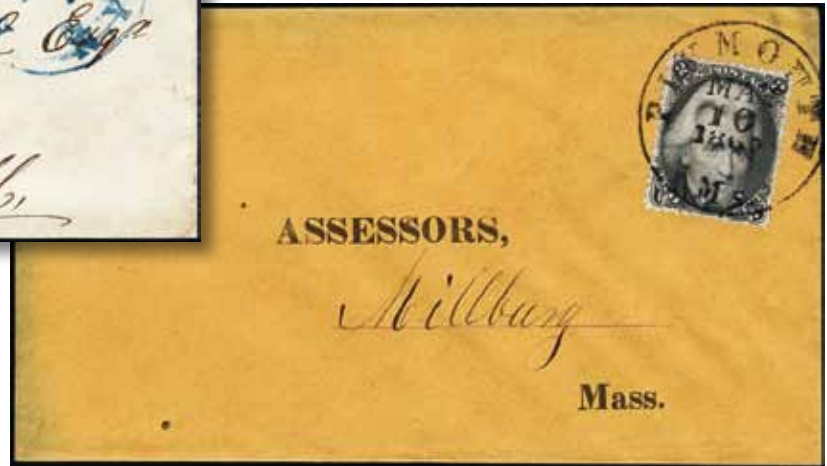
1093 ☒

73, 1863 2c Black, well-centered stamp tied by bold and attractive New York geometric to unsealed all-over advertising cover for "Clothiers & Importers - Goods for Men's Wear", addressed to Ithaca, Michigan, Extremely Fine and lovely
Provenance: Steve Metzger

100



1094



1095

LotNo

Start Price

1094 ☒ **73, 1863 2c Black**, horizontal pair with crisp impression and excellent centering, tied by blue "Auburn N.Y. Mar 7" cds and matching grid on cover to Chicago, barely reduced at left, Extremely Fine, pencil notation on reverse reads "4c rate must have been a carrier rate - scarce thus", 1988 Philatelic Foundation certificate

60

1095 ☒ **73, 1863 2c Black**, incredibly well-centered single (considering the tight margins on this issue) tied by bold strike of "Plymouth Ms. May 10 1862" cds to orange preprinted cover to Millbury, Massachusetts, Extremely Fine and choice

50



1096



1097

1096 ☒ **73, 1863 2c Black**, nicely-centered with particularly strong perfs, deep and striking color, tied by crisp "Middletown Ct. Jun 9" cds, on unsealed cover to New Haven, Connecticut, Extremely Fine and choice
Provenance: Steve Metzger

50

1097 ☒ **73, 1863 2c Black**, single cancelled by clear "15" with matching "Sacramento Cal Sept 6 1863" cds alongside, on small locally-addressed ladies cover (embossing on flaps), Very Fine and rare

50



1098

1099

LotNo

Start Price

- 1098 ☒ **75, 1862 5c Red brown**, horizontal pair with cogwheel cancels, tied by "San Francisco Cal. Feb 21 1863" cds, on small cover to Carthage, New York, several strikes of straightline corner card handstamp, light toning and missing backflap, still Very Fine
- 1099 ☒ **75, 1862 5c Red brown**, single used alongside 1861 10c Green (68), both extraordinarily fresh with rich color, stamps tied by large Boston "Paid" grid to cover to **Paris, France**, "Boston Paid 12 Jul 15" credit cds at left, red July 27 French entry handstamp and boxed "PD", Paris backstamp, Extremely Fine and choice, a pristine cover

200

200



1100



1101

- 1100 ☒ **77, 1866 15c Black**, single tied on envelope addressed to Germany by square of black wedges cancel, lightly struck red "NY Hamb Pkt/ 12" exchange postmark, manuscript "*via Bremen or Hamburg*", backstamped Hamburg, envelope slightly reduced at top with backflap missing, Fine use via Hamburg packet (Scott \$225)
- 1101 ☒ **78a, 1863 24c Grayish lilac**, horizontal pair tied by San Francisco cogwheel to 1866 double weight cover to Worcestershire, England, matching June 6 San Francisco cds, July 12 London paid in red, Bewdley backstamps, Very Fine and attractive cover

75

200

1867 Grilled Issue (79-101)



1102



1103

LotNo

Start Price

1102 ☒ **87, 1868 2c Black, "E" Grill**, large and balanced margins for this difficult issue, tied by black circle of wedges to locally-addressed orange cover, sender's handstamp at top left, Extremely Fine use (Scott \$275)

75

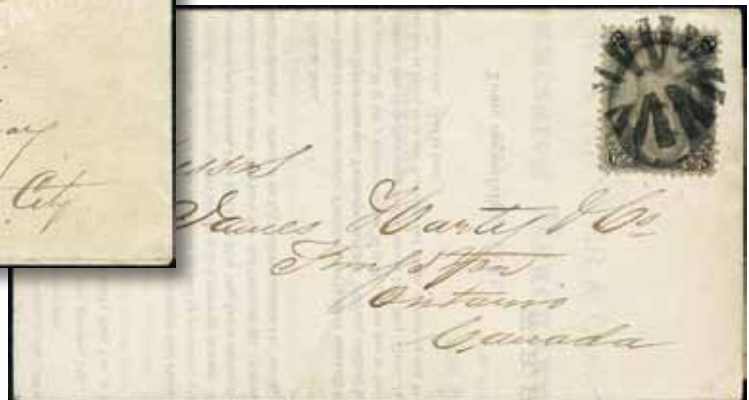
1103 ☒ **92, 1868 1c Blue, "F" Grill**, horizontal strip of three tied by "Washington D.C. Mar 26" cds and segmented cork killer, on small cover to Kendall's Mills, Maine, embossed backflap, Extremely Fine and attractive, a wonderful multiple of the 1c "F" grill on cover

*Provenance: William West
Marc Haas
Ryohei Ishikawa*

150



1104



1105

1104 ☒ **93, 1867 2c Black, F Grill**, single with three full margins, tied by bold geometric with matching "New-York City Oct. 3" cds, on delightful all-over advertising cover for **Andrew's Centrifugal Pumps, Engines, and Boilers** in bistre, reverse with large vignette of boiler in dark bronze, Extremely Fine and choice

75

1105 ☒ **93, 1867 2c Black, F Grill**, well-centered single tied by bold and attractive circle of arrows on April 1869 prices current from New York to **Canada**, Very Fine in every regard

75



1106



1107

LotNo

Start Price

1106 ☒ **93, 1867 2c Black, F Grill**, single with well-defined grill points tied to envelope by wedges cancel with "Carrier Jun 24 1st" cds alongside, well centered stamp on a Very Fine cover

40

1107 ☒ **93, 1867 2c Black, F Grill**, used alongside 1861 1c Blue (63), 2c with exceptional centering, each stamp tied by bold geometric killer, matching "Rockland Me Oct 13" double circle datestamp, addressed to Concord, New Hampshire, Extremely Fine in every regard, a gem

*Provenance: Edward Worden
Steve Metzger*

Offer



1109



1108

1108 ☒ **94, 1868 3c Rose, "F" Grill**, large-margined single tied by "China, Me Nov 30" cds and matching target, on beautiful red and black Pomeroy "New American Heat Regulator" advertising cover to Orange, Massachusetts, slightly reduced at right, still Very Fine and attractive

50

1109 ☒ **97, 1868 12c Black, F Grill**, beautiful stamp with large balanced margins, tied by neat black cork cancel to folded lettersheet to Dundee, Scotland, red "Boston Paid. Nov 10" cds alongside, manuscript "Steamer Cuba, Nov 11, 1868", horizontal file fold well away from stamp, Extremely Fine, a choice stamp on a lovely cover, 1985 Philatelic Foundation certificate (Scott \$300)

100



View along the Seine in Paris



LotNo

1110 ☒

100, 1868 30c Orange, "F" grill, single with clearly defined grill tied by circle of wedges cancel and blue French transit cancel on envelope addressed to Paris, red "Boston Paid 12 May 4" exchange cds, red framed "PD", Very Fine and attractive; signed Holcombe and with his 1992 certificate (Scott \$1,800)
Provenance: Ryohei Ishikawa

Start Price

500

1869 Issue (112-122)



1111

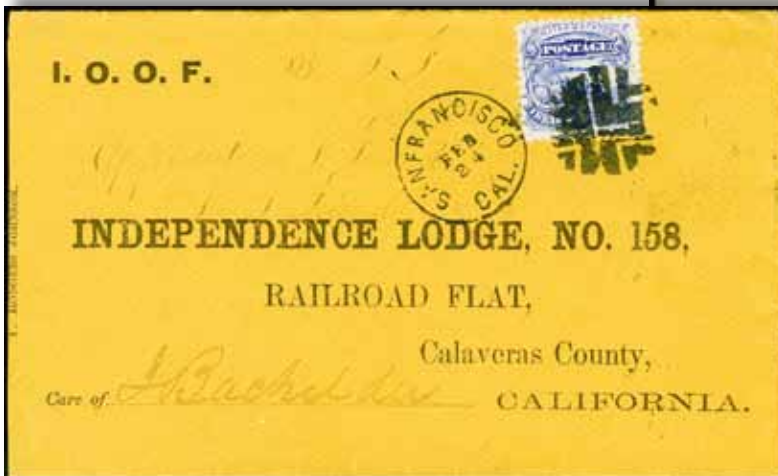


1112

LotNo

Start Price

- 1111 ☒ 114, 1869 3c Ultramarine, tied by geometric cancel on yellow envelope with red cameo "Metropolitan Mills, Trusdell & Phelps/ Coffees, Teas, Spices, etc" cc, New York Jun 11 cds, opened and slightly reduced at left, Very Fine 75
- 1112 ☒ 114, 1869 3c Ultramarine, canceled by circle of wedges with a Gallipolis, Ohio cds alongside, on illustrated cover for "HW & AL Langley/ Manufacturers Fancy & Family Flours" with image of the factory at the left, envelope a tiny corner defect upper right not affecting stamp, still Very Fine and attractive 40



1113



1114

- 1113 ☒ 114, 1869 3c Ultramarine, bright and fresh single tied by black geometric cork and "San Francisco Cal. Feb 24" cds, orange cover with I.O.O.F. corner card, addressed to Independence Lodge, No. 58 in Railroad Flat, Calaveras County, includes attractive enclosure from the Office of the Grand Secretary, very slightly reduced at left, still Very Fine and attractive Offer
- 1114 ☒ 114, 1869 3c Ultramarine, tied on envelope with dove and ribbon address panel by target cancel, "Canton Md" (?) cds alongside, with original ornate multicolor "Forget Me Not" enclosure with fancy lace and floral design, Very Fine Offer



LotNo

Start Price

1115 ☒

116, 1869 10c Yellow, tied by black circle of wedges cancel on an envelope addressed to Elizabeth, Pennsylvania with a lightly struck "P.O.D. U.S. Con. Genl. Shanghai Apr 12" cds, manuscript "Via San Francisco" at upper left with accompanying light strike of "San Francisco Paid All May 14" transit cancel, Fine stamp on envelope opened and slightly reduced at right, Fine use from China

200

S.S. 'Lafayette'



1116 ☒

118, 1869 15c Brown and blue, Type I, remarkable single with unusually large margins all the way around, cancelled by quartered cork on cover to Paris, bold red "New Paid York June 26 12" exchange office postmark, manuscript "per steamer Lafayette" and red entry cds and boxed "PD", July 8 merchant's receiving backstamp, Extremely Fine in every regard and certainly amongst the most attractive 1869 15c Type I covers in existence, a true showpiece, 1981 Philatelic Foundation certificate (Scott \$1,800)
Provenance: Watt White

500



LotNo

Start Price

1117 ☒

118, 1869 15c Brown and blue, Type I, single just tied on envelope addressed to Bordeaux, France with black "New Orleans La Dec 24" cds alongside, red "New York Paid 6 Dec 30" exchange cds ("DEC" reversed), blue French transit and red framed "PD", backstamped Paris A Bordeaux and Bordeaux 13 Janv 79 arrival, Fine single on lightweight envelope opened at right and partially open the other sides, Fine use; signed Ashbrook (Scott \$1,800)

200

1870-71 National Banknote Grills (134-144)



1118 ☒

139, 1870 10c Brown, H Grill, single tied on folded letter datelined "San Francisco 2 Julio 1872" and addressed to San Jose, Costa Rica (Millet correspondence) by black crossroads cancel with a magenta "San Francisco Cal Paid Jul 9" cds alongside, blue sender's dated handstamp, manuscript "pr Steamer", stamp hinged in place to reveal grill, horizontal file fold, Very Fine; Jack Molesworth notations on back (Scott \$1,000)

200

1870-71 National Banknote Without Grill (145-155)



LotNo

1119 ☒

145, 1870 1c Ultramarine, pair cancelled but not tied on an unsealed envelope with printed "Choice Fancy Poultry" merchant cc, addressed to Fort Wayne Ind, ms "#281" at bottom left, right stamp a pulled perf, Fine circular rate use charged an extra 1c for pick-up

Start Price

Offer

1120 ☒

146-48, 1870 2c-6c Banknotes, slightly overlapping singles canceled by black targets on cover addressed to Muncie, Indiana, embossed seal of "Fairview Grange, Aroma, Ind." at left, envelope opened and slightly reduced at right, Very Fine, nice 3-color franking

50

1121 ☒

148, 1870 6c Carmine, pair tied on folded letter sheet addressed to London by crossroads cancels and an indistinct red New York transit, red London Paid, backstamped London JA 25 72, stamps with fresh color, letter sheet small faults, Fine double-rate use

75



LotNo

Start Price

1122 ☒

149, 1871 7c Vermilion, tied on folded letter sheet addressed to Frankfurt a/Main and forwarded to Zurich by NYFM 8-point star (Weiss ST-8P10), red "New York Paid All Br Transit Aug 2" transit cds, sender's blue double oval handstamp, backstamped Frankfurt 14/8 73, Zurich the following day, Very Fine

100



1123 ☒

150, 1870 10c Brown, fresh single tied by black grid with matching "Santa Cruz Cal. Oct 25" cds alongside, red "New York Paid All Nov 2" cds, on cover addressed to **Gordola, Switzerland**, Swiss receiving backstamp, small piece out of backflap, still Very Fine and attractive

50



1124 ☒

150, 1870 10c Brown, cancelled on an envelope addressed to Paris by blue target cancel with "Cincinnati O Feb 17" cds in blue alongside, just tied by a red "New York Feb 20/ Paid 6" credit date stamp, red London and black French 1873 transit cancels plus red oval "PD", envelope small paper adherence top center, Fine use

Offer

1873-75 Continental Banknote (156-66, 178-79)



LotNo

Start Price

- 1125 ☒ 156 var., 1873 1c Ultramarine on silk paper, well centered horizontal strip of three cancelled by black cork on envelope with Cossachie NY cds, left stamp couple short perfs, otherwise Very Fine and scarce

Offer



- 1126 ☒ 157, 1873 2c Brown, tied on Valentine's envelope with ornate design around the edges by cork cancel with an adjacent "New York NY City Delivery 19 Feb" cds, with the original enclosure featuring an ornate lacy overleaf with multicolor elements, Very Fine

50




- 1127 ☒ 157-59, 1873 2c-6c Banknotes, 2c (2 singles), canceled/ tied by circled star cancels on registered envelope addressed to Litchfield, Connecticut, accompanying "Bridgewater Conn Jun 15" cds, some manuscript docketing at left edge along with a partial paper clip impression, Fine use

40




LotNo

Start Price

- 1128  **158, 1872 3c Green**, fresh and well-centered single tied by bold strike of negative “OK” fancy cancel with matching “Beloit Wis Mar 16” cds alongside, on cover to Chicago, blue Chicago carrier backstamp, slightly reduced at left, Extremely Fine, lovely strike of this attractive design (similar to Cole OK-3 although the “OK” cancels of Beloit all exhibit a degree of variety)


50



- 1129  **159, 1873 6c Dull pink**, two singles tied by cork cancels on envelope addressed to Wellington, New Zealand, adjacent “Station B Philad. Mar. 6” (1879) cds, printed corner card for wood working machinery, backstamped Wellington 12 AP 79, light edge toning does not affect stamps, a Fine use to a desirable destination

100



- 1130  **160, 1873 7c Orange vermillion**, delightful single with a bold impression nestled between four large margins, unobtrusive cancel with “San Francisco Cal. Mar 16” cds alongside, addressed to Biebrich, Germany, red New York transit handstamp and Biebrich arrival cds on reverse, cover with some insignificant internal wrinkles, Extremely Fine and attractive cover with a remarkable stamp, 2000 Philatelic Foundation certificate (Scott \$160)

150



1131

1132

LotNo

Start Price

- 1131 ☒ **161, 1873 10c Brown**, bright and fresh single tied by black grid with matching "Santa Cruz Cal. Jan 9" cds alongside, stamp also tied by red "New York Paid All Via Eng. & Ostd. Jan. 17" transit datestamp, on orange cover to **Gordola, Switzerland**, proper Swiss transit and arrival backstamps, Very Fine and attractive
- 1132 ☒ **163, 1873 15c Yellow orange**, with 1870 2c Vermilion (183), each tied to cover by black vertical 6-bar "3" ellipse and large "10" handstamp paying appropriate 17c rate from New York to **Valparaiso, Chile**, clear strike of red January 20, 1879 New York datestamp, blue "Fred K. Probst & Co." forwarding agent circular datestamp (Rowe rarity 2), manuscript "via Panama" in upper left, February 21 backstamp, fresh and quite attractive, an early foreign use of 183; 1998 APS certificate

50

100



Guadalajara Cathedral

- 1133 ☒ **165, 1874 30c Gray black**, jumbo stamp with perfectly balanced margins, tied by New York duplex to 1875 triple rate cover to **Guadalajara, Mexico**, blue sender's handstamp and endorsed "Str. City of Merida", backstamped Vera Cruz, stamp with barest traces of perf tip toning (mentioned for strict accuracy only), Extremely Fine, a wonderful stamp on a lovely cover (Scott \$700)

400

1879 American Banknote Soft Paper (182-191)



LotNo

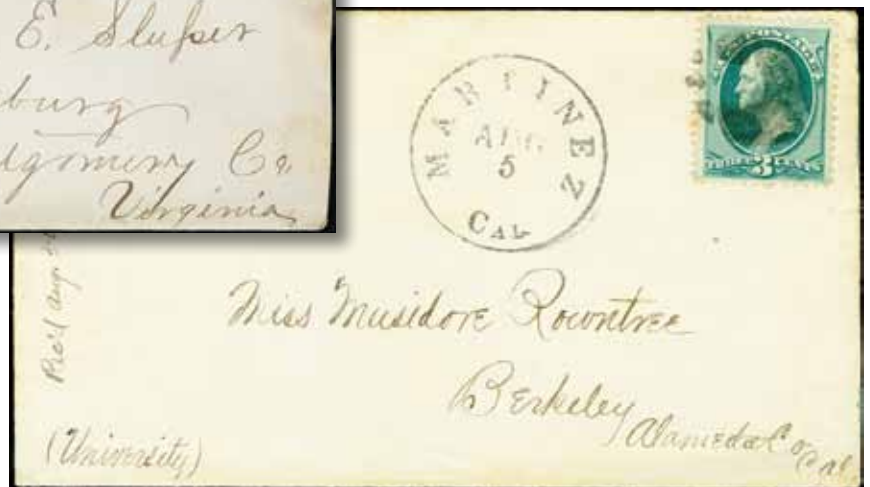
Start Price

- 1134 ☒ 184, 1879 3c Green, tied by perfect strike of fancy negative "M" with October 9 Worcester, Massachusetts cds alongside, cover addressed to New Haven, Connecticut, 1879 1c and 2c postage dues at top left with circle handstamp although there is no indication of postage due, cornercard for the Worcester Silk Company, Very Fine example of one of the most attractive fancy cancels used by Worcester (Cole Lw-85)

100



1135



1136

- 1135 ☒ 184, 1879 3c Green, canceled by black target cancel with near-perfect strike of "Percyl Wyo. Oct 1 1883" territorial period cds, addressed to Blacksburg, Virginia, Very Fine
- 1136 ☒ 184, 1879 3c Green, tied on an envelope addressed to Berkeley Cal by black cork cancel, nice strike of "Martinez Cal Aug 5" cds alongside, ms 1879 docketing at left, envelope neatly opened at right, Very Fine cover from small California town

75

Offer


1881-88 Re-engraved American Banknote (205-218)

The Old Depot
in Bloomington



LotNo

Start Price

1137 

210, 1883 2c Red brown, well centered “jumbo margined” single tied by fair strike of blue “Bloomington Kansas Jan 1 A.M.” cds, addressed to Osborne City, Kansas, Very Fine

30



1138 **

214, 1887 3c Vermilion, well centered with sharp impression, o.g., NH; 2020 PSE graded XF 90 certificate (SMQ \$475)

220

1890-93 Small Banknotes (219-229)



LotNo

Start Price

- 1139 ☒ 220, 1890 2c Carmine, single (natural s.e. at top and right) tied by New York duplex to **Spencer Repeating Shot Gun** advertising cover addressed to Branford, Connecticut, all-over text on the back lauding the product's merits, Extremely Fine and attractive, a scarce design

75



1140



1141

- 1140 * 224, 1890 6c Brown red, very well centered, o.g., 2020 PSE graded XF-S 95 certificate (SMQ \$325)
- 1141 * 225, 1893 8c Lilac, sharp impression, o.g. with the barest trace of hinging (previously certified by PSE as NH), a nice stamp, 2020 PSE graded VF-XF 85 (SMQ \$80)

120

40

1893 Columbian Exposition Issue (230-245)



LotNo

Ex 1142

Start Price

- 1142 ** 230-34, 1893 1c-5c Columbians, all NH and fresh, each with graded 2020 PSE certificate: 1c VF 80J, 2c VF-XF 85J, 3c VF-XF 85J, 4c VF 80 (small natural inclusion), and 5c VF 80 (SMQ \$570)

250



1143



1144

- 1143 ☒ 231, 1893 2c Columbian, single tied on envelope with all-over ads front and back in red for "E.C. Meacham Arms Co., St. Louis Mo.,/ Winchester Repeating Rifles, Single Shot Rifles, Shot Guns and Tools", envelope light bend through the stamp and tiny bit reduced at top, some ink figures at left, Fine
- 1144 ☒ 232, 1893 3c Columbian, tied by "World's Fair Station/ Chicago Oct 30 1893" machine cancel on an envelope with a multicolor all-over view of Fredericksburg, Va, unaddressed, Very Fine and attractive

75

75



- 1145 ☒ 232-33, 1893 3c, 4c Columbian, striking oversized registered cover addressed to Germany franked with 3c (6) and 4c (11, one with natural straight edge) singles all tied by boldly struck "New York A" double oval cancels, NY registry label overlaps one of the 4c values, backstamped NY Regy Div 8-1 1893 double oval plus boxed registry dated handstamp, German 11 8 93 arrival date stamp, envelope a trivial bit of postal wear as expected but an overall Fine and impressive cover

100



LotNo

Start Price

1146 **

234, 1893 5c Columbian, well centered with large margins, o.g., NH; 1996 Philatelic Foundation (for margin single from which margin has been removed) and 2020 PSE graded VF-XF 85J certificates (SMQ \$350)

120



Rowland B. Mahany



1147 ☒

234, 1893 5c Chocolate, well-centered single tied by June 4, 1893 Washington, DC machine cancel to cover to "Mr. Rowland B. Mahany, United States Legation, Ecuador", Extremely Fine and choice, a most unusual destination

Rowland B. Mahany (1864–1937) served as Envoy Extraordinary and Minister Plenipotentiary to Ecuador from February 24, 1892 until his resignation on June 12, 1893. He later served as a congressman for New York's 32nd district from 1895 to 1899, and went on to serve on the War Labor Board under President Wilson and was a delegate to the 1924 and 1928 Democratic National Conventions.

75



1148



1149

1148 **

235, 1893 6c Columbian, left margin single, nicely centered, NH; 2000 Philatelic Foundation and 2020 PSE graded VF-XF 85 certificates (SMQ \$225)

100

1149 *

235a, 1893 6c Columbian, Red violet shade variety, vibrant coloring and ample margins, o.g., 1999 Philatelic Foundation and 2020 PSE graded VF-XF 85J certificates (SMQ \$80)

40



LotNo	1150	1151	1152	1153	Start Price
1150 **	236, 1893 8c Columbian , nicely centered amidst oversized margins, o.g., NH; 1999 Philatelic Foundation and 2020 PSE graded VF-XF 85J certificates (SMQ \$275)				120
1151 **	236, 1893 8c Columbian , o.g., NH, natural gum crease, 1989 Philatelic Foundation and 2020 PSE graded 75J certificates (SMQ \$120)				40
1152 **	237, 1893 10c Columbian , wonderful crisp impression, NH, fresh and choice, 2020 PSE graded VF 80J certificate (SMQ \$290)				140
1153 **	239, 1893 30c Columbian , fresh color, o.g., NH; reperforated at top, Very Fine appearance; 1988 Philatelic Foundation and 2020 PSE certificates (Scott \$675)				100



1156

1154 **	240, 1893 50c Columbian , bottom margin single with plate #77, PO fresh, o.g., NH, 1993 Philatelic Foundation and 2020 PSE graded VF 80 certificates (SMQ \$1,500)	600
---------	---	------------



1155 ☒	240, 1893 50c Columbian , tied with 1893 8c Columbian (236) on registered cover to Germany by "Kings Bridge Station NY" double oval cancels, NY registry exchange label slightly overlaps the 8c value, framed registry handstamp, backstamped NY City Reg'y Div. 3-10 1899, Lichtenthal 19.3.99 arrival, 50c some perf tip toning, envelope some minor faults, a Fine use; Jack Molesworth notations on the back	100
1156 **	241, 1893 \$1 Columbian , warm color and better-than-average centering, NH, reperforated at left (not mentioned on 1995 certificate), despite the reperf an attractive original gum example of this dollar-value Columbian, 1995 Philatelic Foundation and 2020 PSE certificates (Scott \$3,400 for NH)	300



LotNo

Start Price

1157 **

243, 1893 \$3 Columbian, bright and fresh color, NH, a rare post office fresh and well-centered dollar-value Columbian, *copy of 1997 Philatelic Foundation certificate for block of four from which this originated and 2020 PSE graded F-VF 75 certificate (SMQ \$3,250)*

1,500

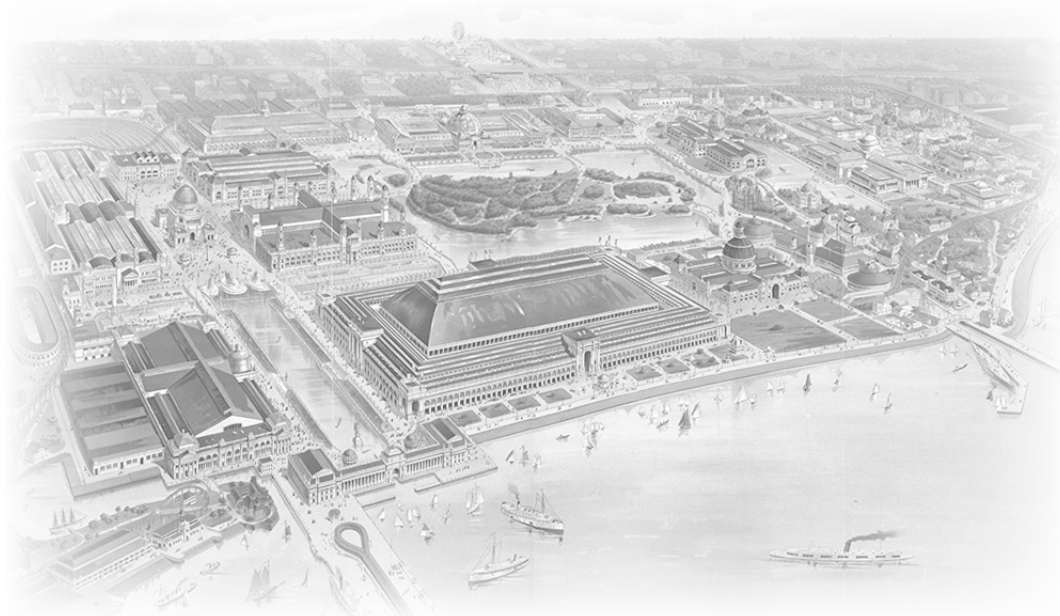
Steamer 'La Gascogne'



1158 ☒

244, 1893 \$4 Columbian, tied along with 1890 5c Chocolate (223) by strong strikes of "New York P. Oct. 13, '93" duplex cancels on **registered cover with printed address to Paris, France**, 5c also tied by blue Paris receiving cancel, printed and handstamped corner cards, sender's ship routing "La Gascogne", New York Exchange registry label, couple faint stain spots and light file folds, some scuffing to backflap, Fine foreign use of \$4 Columbian; Jack Molesworth notations on back side (Scott \$4,000 for domestic use)
Provenance: Jack Rosenthal


500



Bird's-Eye view of the Columbian Exposition in Chicago



LotNo

1159 

245, 1893 \$5 Columbian, tied by bold New York oval postmark to registered cover to New Market, New Hampshire, light purple boxed Station J registry handstamp, backstamped New Market January 1, 1894, light tape on reverse, still Very Fine, a choice single franking, *Molesworth notation on reverse and 1982 Philatelic Foundation certificate which does not accompany* (Scott \$4,750)

Start Price

1,500

1894 Bureau Unwatermarked (246-263)



Bureau of Engraving and Printing



LotNo

Start Price

1160 **

261A, 1894 \$1 Black, Type II, sharp proof-like impression, rich color, and near-perfect margins, immaculate gum, NH, one of the finest example of this difficult stamp we have ever encountered, *2020 PSE certificate graded XF 90 and 1993 Philatelic Foundation certificate*, PSE population report records five NH singles at this exceptional grade and only two grading higher, a magnificent stamp (SMQ \$14,500)

5,000

1894 Bureau Watermarked (264-278)



1161



1162

LotNo

Start Price

- 1161 ✉ **267, 1895 2c Carmine, Type III**, tied by Washington, New Jersey Jun 1900 machine cancel on cover with multicolor lithographed ad for "The Cornish American Pianos and Organs" showing an upright pedal organ, backstamped Beverly NJ Jun 23, cover bit of edge wrinkling and a light horizontal bend across the top through the stamp, opened and tiny bit reduced at right, Fine and attractive.
- 1162 ** **270, 1895 5c Chocolate**, bottom margin plate no. 357 and imprint strip of three, NH, fresh and choice, 2020 PSE graded F 70 certificate (Scott \$375)

75

60

1898 Bureau UPU Colors (279-284)



1163



1164

- 1163 ✉ **279B, 1899 2c Red, Type IV**, single (natural s.e. at bottom) tied by Manasquan, New Jersey September 15, 1898 duplex to two-color "Colonel Roosevelt" Spanish-American War patriotic, with eagle and flag above portrait and buffalo at lower right, addressed to Frenchtown, New Jersey, Very Fine and attractive cover showing the future president
- 1164 ✉ **279B, 1899 2c Red, Type IV**, single tied by Manasquan, New Jersey September 22, 1898 duplex, on beautiful two-color Spanish American War patriotic depicting President William McKinley with an American flag and the Capitol dome, addressed to Frenchtown, New Jersey, Very Fine

50

50



1168



1165

LotNo

Start Price

1165



279B, 1899 2c Red, Type IV, tied by August 28, 1898 Washington, DC Barry machine cancel, beautiful red and blue design of Commodore W.S. Schley (fresh off the heels of the Battle of Santiago de Cuba) with Lady Liberty holding a shield and flag, addressed to Frenchtown, New Jersey, a remarkably fresh and Very Fine Spanish-American War patriotic

50



1166



1167

1166

**

280b, 1898 4c Orange brown, right margin single with part arrow, o.g., NH, fresh and Fine; 1991 *Philatelic Foundation* and 2020 PSE certificates (Scott \$80)

30

1167

**

281, 1898 5c Dark blue, bottom margin single with part imprint, nicely centered within oversized margins, NH, 1996 *Philatelic Foundation* certificate (for pair from which the single originated), 2020 PSE grade VF-XF 85J certificates (SMQ \$175)

75

1168



281, 1898 5c Dark blue, tied on envelope addressed to Bombay, India by Seneca Falls, NY Mar 15 99 duplex, detailed ad for "The Seneca Falls Mfg Co." in blue showing "Indian, Water Falls & Factory Buildings", backstamped "Sea Post Office AP 10 99", some ink smudging in the address and slightly reduced at left, Fine and attractive

40

1898 Trans-Mississippi Exposition Issue (285-293)



Ex 1169

LotNo

Start Price

1169 * 285-90, 1898 1c-10c Trans-Mississippi, o.g., 8c NH, 4c bit of oxidation, 10c natural straight-edge, VG-VF (Scott \$832)

150



1170



1171



1172

1170 ** 285, 1898 1c Trans-Mississippi, bottom margin single with part imprint, PO fresh, o.g., NH, 2020 PSE graded VF-XF 85 certificate (SMQ \$115)

50

1171 ** 286, 1898 2c Trans-Mississippi Exposition imprint and plate number pair #639 bottom, brilliant color and nicely centered, o.g., NH; 2020 PSE graded VF-XF 85 certificate (Scott \$160)

50

1172 ** 286, 1898 2c Trans-Mississippi Exposition top margin single with plate #743, o.g., NH, small tear in selvage not affecting stamp; 2020 PSE graded VF 80 certificate (SMQ \$70)

Offer



1173 ** 288, 1898 5c Trans-Mississippi, deep, dark blue color, o.g., NH, 2020 PSE graded VF-XF 85 certificate (SMQ \$425)

200




1174



1176


LotNo

Start Price

- 1174  **288, 1898 5c Trans-Mississippi**, single tied by "Denver, Colo Sep 13 1899" machine cancel on envelope addressed to Sweden, light even aging, Fine cover to a scarce destination

Offer



- 1175 ** **289, 1898 8c Trans-Mississippi Exposition**, top left corner margin single, o.g., NH, fresh and Very Fine; 1993 Philatelic Foundation and 2020 PSE certificates (Scott \$430)
- 1176  **290, 1898 10c Trans-Mississippi**, tied by "Tremont Station" mute double oval to locally-addressed cover, with matching boxed violet June 22, 1898 branch post office registry handstamp, several different backstamps, small edge faults at top, Very Fine and attractive, very early use only five days after the Trans-Mississippi issue was released (Scott \$750)

180

75



- 1177 * **291-93, 1898 50c-\$2 Trans-Mississippi**, all fresh and o.g., \$1 with small hinge thins and light creases, \$2 two tiny hinge thins, still F-VF, attractive group of the three high values, each with 2020 PSE certificate (Scott \$4,000)

600

Fine Art Building at the Trans-Mississippi Exposition in Omaha



LotNo

1178 **

292, 1898 \$1 Trans-Mississippi Exposition, gem example with particularly nice centering and rich color; o.g., NH; 1980 Philatelic Foundation and 2020 PSE graded XF 90 certificates (SMQ \$8,850)

Start Price

4,000

1901 Pan American Exposition Issue (294-299)



1179



1180

1179 **

296, 191 4c Pan-American, PO fresh, NH, 2020 PSE graded F-VF 75 certificate (SMQ \$120)

40

1180 *

299, 1901 10c Pan-American, bottom margin single with part imprint and plate #1151, very well centered, o.g.; 1997 Philatelic Foundation and 2020 PSE graded XF 90 certificates (SMQ \$200)

75

1901-08 Regular Issue (300-322)



1181



1182

LotNo

Start Price

- | | | |
|---------|--|-----|
| 1181 ** | 305, 1903 6c Claret, proof-like impression and brilliant color, spectacular margins, NH, as fresh as the day it was printed, <i>copy of 2002 Philatelic Foundation certificate (for block from which this single originated) and 2020 PSE graded XF 90 certificate (SMQ \$450)</i> | 200 |
| 1182 ** | 308, 1902 13c Purple black, left margin single, crisp impression with sharp details, NH; <i>1997 Philatelic Foundation (for block of six from which this single originated) and 2020 PSE graded VF 80 certificates (SMQ \$100)</i> | 40 |

1904 Louisiana Exposition Issue (323-327)



- | | | |
|--------|---|----|
| 1183 ☒ | 324, 1904 2c Louisiana Purchase, tied by May ?, 1904 East St. Louis, Illinois machine cancel to gorgeous multicolor Louisiana Purchase Expo illustrated cover ("Building of Varied Industries"), addressed to Detroit with May 8 receiver on reverse, Extremely Fine and attractive early use of this stamp | 50 |
|--------|---|----|



1184



1185



1186

- | | | |
|---------|---|-----|
| 1184 ** | 325, 1904 3c Louisiana Purchase, rich color and crisp impression, NH and PO fresh, <i>1996 Philatelic Foundation and 2020 PSE graded XF-Sup 95 certificates (SMQ \$1,200)</i> | 600 |
| 1185 ** | 326, 1904, 5c, Louisiana Purchase, nicely centered, PO fresh, NH; <i>2020 PSE graded VF-XF 85 certificate (SMQ \$325)</i> | 150 |
| 1186 ** | 327, 1904 10c Louisiana Purchase, right margin single, warm color and attractive margins, NH, <i>1988 Philatelic Foundation and 2020 PSE graded VF-XF 85 certificates (SMQ \$450)</i> | 220 |

1907 Jamestown Exposition issue (328-330)



1187



1188

LotNo

Start Price

1187 **	329, 1907 2c Jamestown , bright color, NH, 1997 Philatelic Foundation and 2020 PSE graded VF 80 certificates (SMQ \$90)	40
1188 **	330, 1907 5c Jamestown , lush color and attractive centering, NH (rare thus), copy of 1997 Philatelic Foundation certificate for block from which this stamp originated and 2020 PSE graded VF-XF 85 certificate (SMQ \$500)	250

1908-09 W-F Perf 12 Dbl Line Watermark (331-342)



1189



1190



1191

1189 **	339, 1909 13c Blue green , left margin single with plate #4948, vibrant color, NH, 1997 Philatelic Foundation and 2020 PSE graded VF-XF 85 certificate (SMQ \$135)	60
1190 *	341, 1909 50c Violet , top margin single with part imprint, well centered with vibrant color, mint, o.g., 1990 Philatelic Foundation and 2020 PSE graded VF 80 certificates (SMQ \$300)	75
1191 (*)	342, 1909 \$1 Violet brown rich color, regummed; 2020 PSE graded F-VF 75 certificate (Scott \$450 for o.g)	75

1909 W-F Bluish paper (357-366)



1192 **	358, 1909 2c Carmine on bluish , deep and vibrant color, NH; 1995 Philatelic Foundation and 2020 PSE graded VF-XF 85 certificates (SMQ \$250)	100
---------	--	-----

1909 Commemoratives (367-373)



1193

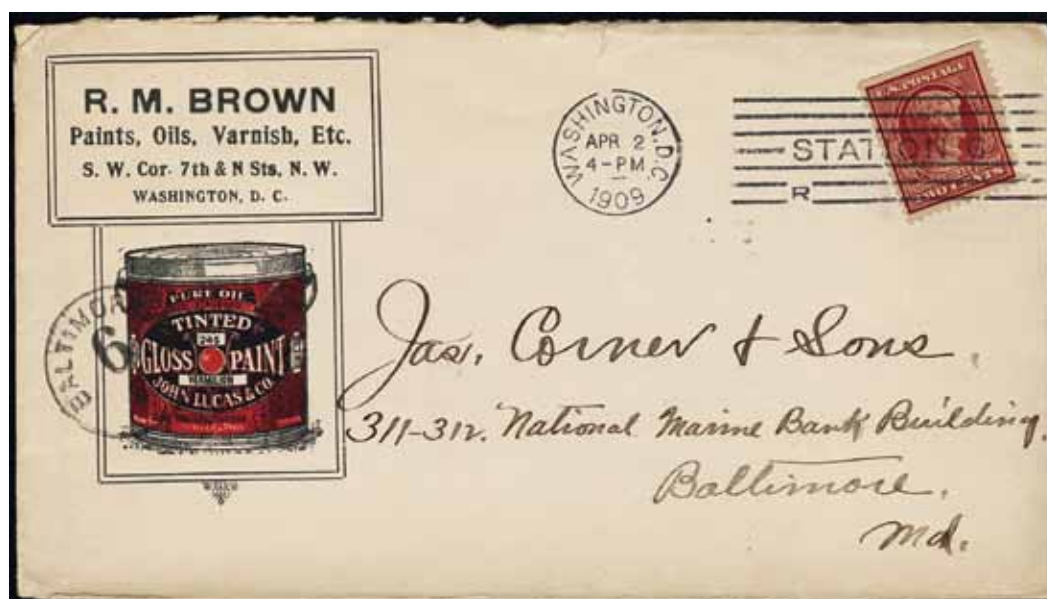


1194

LotNo

Start Price

- | | | |
|---------|--|-----|
| 1193 ** | 369, 1909 2c Carmine on bluish, very nicely centered, NH; 2020 PSE graded VF-XF 85 certificate (SMQ \$400) | 150 |
| 1194 ** | 369, 1909 2c Carmine on Bluish paper NH, reperforated at bottom; Fine appearance; 1996 Philatelic Foundation and 2020 PSE certificates (Scott \$300) | 50 |



- | | | |
|--------|---|-----|
| 1195 ☒ | 369, 1909 2c Carmine on bluish, single (natural s.e. at top) tied by April 2, 1909 Washington, DC Station C machine cancel, on attractive illustrated advertising cover for Paints, Oils, Varnish, Etc., addressed to Baltimore with "Baltimore 6" handstamp at left, opened at top, Very Fine and especially desirable on such a nice ad cover (Scott \$375) | 100 |
|--------|---|-----|

1910-11 W-F Perf 12 Single Line Wmk (374-382)



1196



1197

- | | | |
|---------|---|-----|
| 1196 ** | 377, 1911 4c Brown, top margin single with partial star and plate #5576, well centered with large margins, NH; 1993 Philatelic Foundation and 2020 PSE graded XF 90J certificates (SMQ \$210) | 90 |
| 1197 ** | 378, 1911 5c Blue, rich color, large nicely balanced margins, NH; 1996 Philatelic Foundation and 2020 PSE graded 90J certificates (SMQ \$240) | 110 |

1910-13 W-F Imperfs and Coils (383-396)



LotNo

Start Price

1198 ** 390, 1910 1c Green coil, pair, very nicely centered, NH; 2020 PSE graded XF 90 certificate (SMQ \$115) 50

1913-15 Panama-Pacific Exposition Issue (397-404)



1199



1200



1202



1203

1199 ** 397, 1913 1c Panama-Pacific, design nestled amongst four wide margins, NH, fresh and choice, 1996 Philatelic Foundation and 2020 PSE graded XF 90J certificates (SMQ \$145) 70

1200 ** 398/401, 1913-14 1c/10c Panama-Pacific, includes 398 NH, reperforated at right (2020 PSE certificate), 400A NH, reperforated at top (1996 Philatelic Foundation and 2020 PSE certificates), and 401 NH, reperforated at left and bottom (2000 Philatelic Foundation and 2020 PSE certificates), a Very Fine-appearing group of stamps (Scott \$485) 80



1201 ✉ 398, 1913 2c Carmine, stamp tied by Kewanee, Illinois machine cancel to spectacular multicolored advertising cover for the Kewanee Brewing Company, showing an aerial view of the brewery, reverse of cover with attractive "Try Our Beer Bottled" ad, Extremely Fresh and choice 50

1202 ** 400, 1913 10c Panama-Pacific Exposition, nicely centered with wide margins, NH, touch of oxidation, F-VF; 1994 Philatelic Foundation certificate (Scott \$250) 50

1203 ** 404, 1915 10c Panama-Pacific Exposition, Perf 10, nicely centered, NH, bit of oxidation, F-VF; 1996 PSE certificate (Scott \$1,600) 250

1912-14 W-F Perf 12 (405-423)



LotNo

Start Price

1204



406, 1912 2c Carmine, Type I, single tied by Salina, Kansas machine cancel to cover to Chicago, beautiful multicolored "DuPont Sporting Powders" ad cover with quail and cornfield design, all-over text design on reverse, Extremely Fine and choice ad cover

50



1205



1206



1207



1208

1205 **

414, 1912 8c Pale olive green, top margin single with plate #5722, strong color, PO fresh, NH; 1995 Philatelic Foundation (for strip of three from which this single originated) and 2020 PSE graded VF 80J certificates (SMQ \$120)

50

1206 **

418, 1912 15c Gray, well centered and PO fresh, NH, reperforated at right, Very Fine appearance, 2020 PSE certificate (Scott \$175)

40

1207 *

419, 1914 20c Ultramarine, vibrant color, wide margins, o.g.; 1997 Philatelic Foundation and 2020 PSE graded VF-XF 85J certificates (SMQ \$250)

75

1208 *

423, 1912 \$1 Violet brown, intense color, nicely centered, o.g.; 1979 and 1988 Philatelic Foundation certificates, 2020 PSE graded VF-XF 85 certificate (SMQ \$500)

200

1913-15 W-F Perf 10 Watermarked (424-461)



1209



1211



1210

LotNo

Start Price

1209 **	427, 1914 4c Brown , nicely balanced margins, NH; 2020 PSE graded VF-XF 85 certificate (SMQ \$115)	45
1210 **	428, 1914 5c Blue , well centered within large margins, NH, 1981 Philatelic Foundation (for the block from which this single originated) and 2020 PSE graded XF 90 certificates (SMQ \$190)	80
1211 **	428, 1914 5c Blue , top margin single with plate #7236, wide margins, NH, 1996 Philatelic Foundation and 2020 PSE graded VF-VF 85J certificates (SMQ \$135)	60



1212



1213

1212 **	430, 1914 7c Black , vivid impression, NH and elusive, 2020 PSE graded VF 80 certificate (Scott \$200)	100
1213 **	431, 1914 8c Pale olive green , right margin single with part imprint, unusually well centered, NH, 1986 Philatelic Foundation and 2020 PSE graded XF 90 certificates (SMQ \$210)	100



1214



1215



1216

1214	432, 1914 9c Salmon red , bottom plate #6901 single, large margins, NH, 1997 Philatelic Foundation and 2020 PSE graded 80J certificates (Scott \$95)	50
1215 **	434, 1915 11c Dark green , very well centered with deep, clear impression, NH, 1994 Philatelic Foundation and 2020 PSE graded XF 90 certificates (SMQ \$125)	50
1216 **	437, 1914 15c Gray , well centered in a dark shade, NH, 1981 Philatelic Foundation and 2020 PSE graded VF-XF 85 certificates (SMQ \$400)	180



1217



1218

LotNo

Start Price

1217 **	439, 1914 30c Orange red, PO fresh and wonderfully well centered, NH, 1997 Peter Holcombe and 2020 PSE graded XF 90 certificates (SMQ \$1,050)	500
1218 **	440, 1917 50c Violet, fresh and well centered, NH, 1996 Philatelic Foundation and 2020 PSE graded VF-XF 85 certificates (SMQ \$1,350)	600



1219



1220

1219 **	459 var, 2c 1914 Carmine imperforate coil, Type I, pair with perforated 10 leader strip tab attached at right, NH, 1984 Philatelic Foundation and 2020 PSE certificates (Scott \$650)	300
1220 **	465, 1916 4c Orange brown, particularly well centered, PO fresh, NH, 2020 PSE graded XF 90 certificate (SMQ \$200)	100

1916-19 W-F Perf 10 Unwatermarked (462-497)



1221



1222



1223



1224



1225

1221 **	467, 1916 5c Carmine error of color, vibrant color, NH, 2000 Philatelic Foundation and 2020 PSE graded F-VF 75 certificate (SMQ \$575)	150
1222 **	469, 1919 7c Black, excellent centering, NH; 1996 Philatelic Foundation and 2020 PSE graded VF-XF 85 certificates (SMQ \$350)	160
1223 **	469, 1916, 7c Black, bottom margin single with plate #7719, large margins, NH; 2020 PSE graded F-VF 75J certificate (Scott \$250)	60
1224 **	472, 1916 10c Orange yellow, well centered, NH, insignificant perf disc indent at bottom, 1988 Philatelic Foundation and 2020 PSE graded VF-XF 85 certificates (SMQ \$350)	120
1225 **	473, 1916 11c Dark green, PO fresh, nicely centered, NH; 1995 Philatelic Foundation and 2020 PSE graded VF-XF 85 certificates (SMQ \$150)	65



1226



1227



1228

LotNo

Start Price

1226 **	479, 1917 \$2 Dark blue, nicely centered, pristine o.g., NH, 1997 Philatelic Foundation and 2020 PSE graded VF-XF 85 certificates (SMQ \$575)	200
1227 **	480, 1917 \$5 Light green, very well centered, NH; 1997 Philatelic Foundation and 2020 PSE graded XF 90 certificates (SMQ \$650)	300
1228 **	480, 1917 \$5 Light green, PO fresh, unblemished o.g., NH, 1994 PSE and 2020 PSE graded VF-XF 85 certificates (SMQ \$450)	200

— 1917-19 W-F Perf 11 (498-524) —



1229 ☒	500, 1919 2c Deep rose, Type Ia, tied by February 17, 1920 New York Hudson Terminal Station machine cancel to immaculate cover to West Morris, Connecticut, Extremely Fine and choice, as nice a cover with the 2c Type Ia as we can recall handling (Scott \$650)	150
--------	--	-----



1230



1231



1232

1230 **	505, 1917 5c Rose, rich color between four gorgeous margins, NH, a pristine and choice example of this popular stamp, 1997 Philatelic Foundation and 2020 PSE graded XF 90 certificates (SMQ \$1,050)	500
1231 **	507, 1917 7c Gray black, nicely centered amongst oversized margins, PO fresh, NH, 1991 Philatelic Foundation and 2020 PSE graded XF 90J certificates (SMQ \$225)	110
1232 **	507, 1917 7c Gray black, particularly well centered and with unblemished o.g., NH, 2020 PSE graded XF 90 certificate (SMQ \$150)	60



LotNo		Start Price
1233 */**	508, 1917 8c Olive bister, plate number and imprint block of six #A 5725 top, top center stamp o.g., others NH, Fine; 2020 Professional Stamp Experts certificate (Scott \$170)	50
1234 **	515, 1917 20c Light ultramarine, bottom margin single with oversized margins, NH, 1998 Philatelic Foundation and 2020 PSE graded VF-XF 85 certificates (SMQ \$150)	50
1235	515, 1917 20c Light ultramarine, bottom margin single, clear and vibrant impression, nicely centered, NH, 2020 PSE graded VF 80 certificate (SMQ \$90)	45
1236 **	516, 1917 30c Orange Red well centered within wide margins, NH; 1992 Philatelic Foundation and 2020 PSE graded 90J certificates (SMQ \$250)	120
1237 **	518, 1917 \$1 Violet brown, top margin single with part "A" imprint and plate #5782, PO fresh and excellent centering, NH, 1981 Philatelic Foundation and 2020 PSE graded 90J certificates (SMQ \$275)	140
1238 **	523, 1918 \$2 Orange red & black, wonderfully balanced and large margins all around, fresh and NH, stamp has unfortunately succumbed to the oxidation that so often impacts this issue, regardless this is a stamp that could someday once again grace the highest-level collection, Extremely Fine, 1997 Philatelic Foundation certificate (Scott \$1,100)	150
1239 **	524, 1918 \$5 Deep green and black, well centered within balanced margins, NH, reperforated at the left; 1997 Philatelic Foundation and 2020 PSE certificates (Scott \$340)	50

1918-20 Offset Issues (525-536)



1240



1242

LotNo

Start Price

1240 **

528, 1920 2c Carmine, well centered with vibrant color, NH, two small creases, XF appearance; 1986 and 1997 Philatelic Foundation certificates, 2020 PSE graded XF 90J certificate (SMQ \$100)

Offer

1241 ☒

533, 1918 2c Carmine, Type V, horizontal pair with gigantic margins all around (including portions of seven adjoining stamps), tied by December 14, 1920 Chicago slogan cancel to cornercard cover to Benton Harbor, Michigan, Extremely Fine and choice, difficult to imagine a much nicer cover (Scott \$225 for single on cover, \$350 for used pair)

100

1242 **

536, 1919 1c Gray green, PO fresh, NH, 2020 PSE graded XF 90 certificate (SMQ \$125)

60

— 1919-21 Issues (537-550) —



1243



1244



1245

1243 **

537, 1919 3c Victory, very well centered, lovely color, NH; 2020 PSE graded XF-S 95 certificate (SMQ \$100)

50

1244 **

548, 1920 1c Pilgrim Tercentenary, absolutely enormous margins, NH, 1992 Philatelic Foundation and 2020 PSE graded XF-Sup 95J certificates (SMQ \$200)

100

1245 **

549, 1920 2c Pilgrim Tercentenary, bright color, NH and post office fresh, 2020 PSE graded XF 90J certificate (SMQ \$105)

50

1922 Regular issue (551-573)



1246



1247



1248



1249

LotNo

Start Price

1246	**	560, 1923 8c Olive green, exceptionally well centered within large margins, NH; 1996 Philatelic Foundation and 2020 PSE graded 90J certificates (SMQ \$250)	120
1247	**	566, 1922 15c Light gray, exceptionally well centered, PO fresh, NH, 2020 PSE graded XF-S 95 certificate (SMQ \$190)	90
1248	**	572, 1923 \$2 Deep blue, nicely centered, PO fresh, NH; 2020 PSE graded VF-XF 85 certificate (SMQ \$150)	65
1249	**	572, 1923 \$2 Deep blue, nicely centered, NH; 2020 PSE graded VF-XF 85 certificate (SMQ \$150)	60



1250	** 田	573, 1923 \$5 Carmine and blue, centerline block of four, vibrant color, NH; 2020 PSE graded F 70 certificate (Scott \$825)	120
------	------	---	-----

1923-29 Issues (575-657)



1251	*	622, 1926 13c Green, bottom margin single with huge well balanced margins, fresh color, o.g.; 1987 Philatelic Foundation and 2020 PSE graded Superb 98J certificates (SMQ \$60)	30
------	---	---	----

1938 Presidential Issue (803-34, 839-51)



LotNo			Start Price
1252 **	834, 1938 \$5 Coolidge, NH, small natural gum skip, 2020 PSE graded VF-XF 85 certificate (SMQ \$90)		40
1253 **	834a, 1938 \$5 Coolidge, Red brown and black shade variety, top margin single with "TOP" imprint, NH, a choice example of this rare shade; 1997 Peter Holcombe and 2020 PSE graded XF 90 certificate (SMQ \$3,250)		1,600
1254 **	834a, 1938 \$5 Coolidge, Red brown and black shade variety, PO fresh with excellent centering, NH, a remarkable stamp in every regard; 2020 PSE graded XF 90 certificate (SMQ \$3,250)		1,600

Air Post Issues



1255 **	C2, 1918 16c Green, PO fresh, unusually well centered, NH; 1996 Philatelic Foundation and 2020 PSE graded XF-S 95 certificates (SMQ \$425)	180
1256 **	C3, 1918 24c Carmine rose & blue, brilliant color and attractive centering, NH, 2020 PSE graded XF 90 certificate (SMQ \$225)	110
1257 **	C5, 1923 16c Dark blue, bold color, nicely centered, NH; 1996 Philatelic Foundation and 2020 PSE graded XF 90 certificates (SMQ \$225)	100
1258 **	C6, 1923 24c Carmine, well centered with vibrant color, NH; 2020 PSE graded VF-XF 85 certificate (SMQ \$175)	75



1259 **	C13, 1930 65c Graf Zeppelin, fresh and NH, a choice stamp, 2020 PSE graded VF-XF 85 certificate (SMQ \$350)	150
1260 **	C14, 1930 \$1.30 Graf Zeppelin, post office fresh, NH, 2020 PSE graded VF 80 certificate (SMQ \$650)	300
1261 **	C15, 1930 \$2.60 Graf Zeppelin, bottom plate number single, fresh and NH (cert mentions short gummed at bottom), 2020 PSE graded F-VF 75 certificate (SMQ \$675)	300

Special Delivery Issues



LotNo

Start Price

1262 **

E5, 1895 10c Blue, bottom left corner margin single, sharp impression, NH, small gum scrape; 1996 *Philatelic Foundation* and 2020 PSE certificate (Scott \$210)

50



1263



1265

1263 **

E5, 1895 10c Blue, bottom margin single with part imprint, o.g., NH, reperforated at right; Very Fine appearance; 1997 *Philatelic Foundation* and 2020 PSE certificates (Scott \$210)

40



1264 **

E5, 1895 10c Blue, top margin plate number and imprint strip of three plate #77, o.g., NH, tiny tear at bottom of left stamp o/w F-VF; 1991 *Philatelic Foundation* and 2020 PSE certificate (Scott \$900)

250

1265 **

E6, 1902 10c Ultramarine, bottom margin single with part imprint and plate #5240, PO fresh, large margins, NH; 1982 *Philatelic Foundation* and 2020 PSE graded VF 80J certificate (Scott \$225)

90



LotNo

Start Price

- 1266 ** E7, 1908 10c "Merry Widow", a brilliant stamp with crisp vibrant color, neat centering with even margins, NH; 2020 PSE graded XF-Sup 95 certificate (SMQ \$600)

300



1267



1270

- 1267 ** E8, 1911 10c Special Delivery, PO fresh, oversized margins, NH; 1992 and 2020 PSE graded VF 80J certificates (SMQ \$265)

100



- 1268 ** E9, 1914 10c Ultramarine, deep rich color, well centered with large margins, NH; 2001 Philatelic Foundation and 2020 PSE graded Superb 98 certificates; only 5 stamps with this desirable grade with no NH single grading higher (SMQ \$2,800)

1,500



1269



1271

- 1269 ** E9a, 1914 10c Blue, top margin single with plate #6049, well centered with wide margins, NH; 1989 Philatelic Foundation and 2020 PSE graded XF 90J certificate (SMQ \$1,100)

450

- 1270 ** E10a, 1916 10c Blue, right margin single, well centered with wide margins, NH; 2020 PSE XF 90J certificate (SMQ \$1,300)

500

- 1271 ** E11b, 1917 10c Gray violet, top margin single with plate #10275, well centered with wide margins, NH; 2020 PSE graded 90J certificate (SMQ \$350)

150

Registration Issue and Registry Exchange Labels



LotNo

Start Price

1272 **

F1, 1911 10c Ultramarine, top margin single with plate #5720, well centered with vibrant color, NH; 2020 PSE graded VF-XF 85 certificate (SMQ \$220)

80

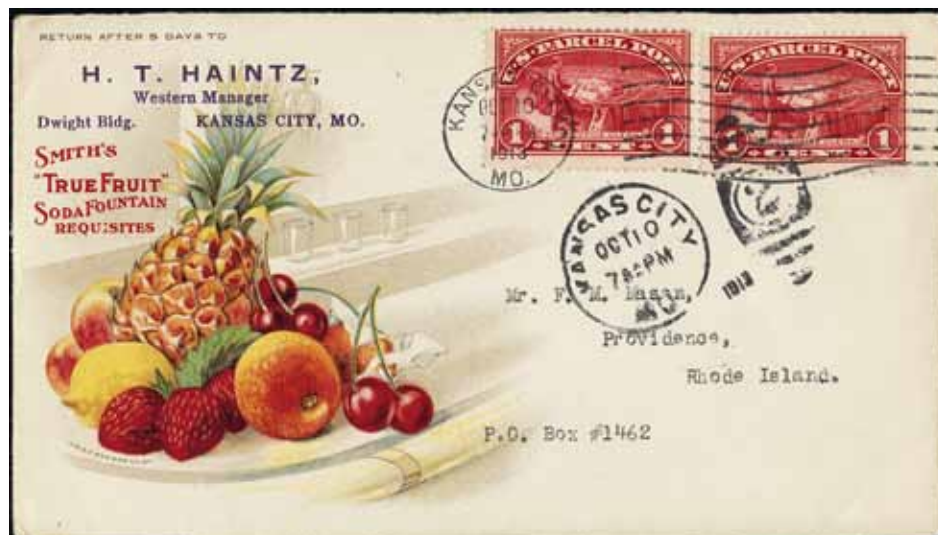
Parcel Post Issues



1273 **

Q1, 1913 1c Carmine rose, bottom margin single with plate #6377, excellent centering with wide margins, rich color, NH; 2020 PSE graded XF-S 95J certificate (SMQ \$300)

140



1274 ☒

Q1, 1913 1c Carmine rose, two singles tied by October 10, 1913 Kansas City, Missouri duplex and machine cancel, on immaculate soda fountain advertising cover to Providence, Rhode Island, exquisite design with multicolored fruit, Extremely Fine, one of the most attractive advertising covers we can remember handling for some time

100



LotNo

Start Price

- 1275 ** Q3, 1913 3c Carmine rose, top margin "THREE" and plate #6254 block of eight, NH, trivial perf disc indent top right stamp, fresh and Very Fine, 2020 PSE certificate (Scott \$268 as hinged plate block with imprint plus two singles)

120



1276



1277



1278

- 1276 ** Q5, 1913 5c Carmine rose, bottom margin single with plate #6212, well centered with large margins, NH; 2020 PSE graded 90J certificate (SMQ \$325)

150

- 1277 ** Q8, 1913 20c Parcel Post unusually well centered with bright color, NH; 2020 PSE graded XF 90 certificate (SMQ \$650)

275

- 1278 ** Q9, 1913 25c Carmine rose, unusually well centered, PO fresh, NH; 2020 PSE graded XF-Sup 95 certificate (SMQ \$925)

400



1279



1280



1281

- 1279 ** Q10, 1913 50c Carmine rose, wonderfully well centered, bright color, NH; tiny natural paper inclusion at top; 2020 PSE graded XF 90 certificate (SMQ \$1,250)

500

- 1280 ** Q11, 1913 75c Carmine rose, excellent centering, bright color and unblemished o.g., NH; 2020 PSE graded XF 90 certificate (SMQ \$425)

200

- 1281 ** Q12, 1913 \$1 Carmine rose, right margin single with plate #6264, wide margins, NH; 2020 PSE graded VF-XF 85J certificate (SMQ \$1,000)

400

Special Handling Issues



LotNo

Start Price

1282 **

QE4a, 1928 25c Yellow green, beautiful centering with wide margins, lovely color, NH; 2020 PSE graded XFS 95 certificate (SMQ \$160)

70

Local Stamps



1283 ☒

15L13, Blood's City Despatch, Philadelphia, PA, 1850 1c Bronze on black glazed, tied by perfect strike of blue "Philadelphia 5cts Oct 31" cds, with equally crisp "Blood's Despatch Oct. 31 8 A.M." double circle handstamp alongside, addressed to Orwigsburg, Pennsylvania, Extremely Fine in every respect, as immaculate a local cover as we've ever seen, Judd said it best when he wrote "very, very attractive"
Provenance: M. Hubert Judd

100



1284 ☒

87L4, Hussey's Post, New York N.Y., 1858 1c Brown red, tied on buff envelope with "Adams Express Company/ 59 Broadway, NY" embossed cc by "Hussey 50 Wm. St. 1ct Paid" cancel (date indistinguishable), stamp ample to large margins, portion of backflap missing, Very Fine (Scott \$450)

150



LotNo

Start Price

- 1285 **136L9, Swarts' City Dispatch Post, New York N.Y., (1c) Red on wove**, tied on small locally addressed envelope by nice strike of oval "Swart's Post Office Chatham Square Jan 30" oval date stamp, equally nice framed "Paid/ Swarts" handstamp, stamp clear to large margins, envelope with a hint of a horizontal bend not affecting stamp, Fine and attractive (Scott \$350)

150

Postal Stationery Entires and Wrappers



1286



1287

- 1286 **U26, 1860-61 3c Red**, entire with Wells Fargo & Co. black company frank at top and a nicely struck "San Jose, Sep 2" oval date stamp, addressed to San Francisco, bit of back side right side flap removed during opening, still Very Fine
- 1287 **U27, 1860-61 3c Red on buff**, with 1857 3c Dull red (26) and printed Wells Fargo frank at top, indicia canceled by blue Wells, Fargo San Francisco double circle date stamp, the 3c tied by scarce blue-framed "COLLECT" handstamp, addressed to San Jose, torn backflap, still Very Fine and attractive

75

150



- 1288 **U82, 1870 3c Green**, with added strip of three 1870 1c Ultramarine (145), all tied/ canceled by black geometric with a light strike of "Portland Ore Oct 5" (1874) cds adjacent, Very Fine stamps, entire with some minor faults, nice trans-continental use

25

U.S. Stamps and Stamped Envelopes Used in the Independent and Confederate States



1289



1290

LotNo

Start Price

- 1289 ☒ **U9, 1854 3c Red on white**, bold “Port Lavaca Tex. Apr 13 1861” cds and matching grid on cover to Bastrop, Texas, contemporaneous docketing on reverse, barely reduced at left, Extremely Fine, Texas seceded from the Union on February 1, 1861, and was admitted to the Confederate States of America on March 23, a choice example of US postage used in the Confederacy
Provenance: A. Murl Kimmel
- 1290 ☒ **U27, 1860 3c Red on buff**, boldly struck “Velasco Tex. Dec 82” balloon type cds (date reversed) entire addressed to Galveston, cover opened and bit reduced at left, professionally restored with repaired tears, Very Fine appearance

100

75

General issues



1291

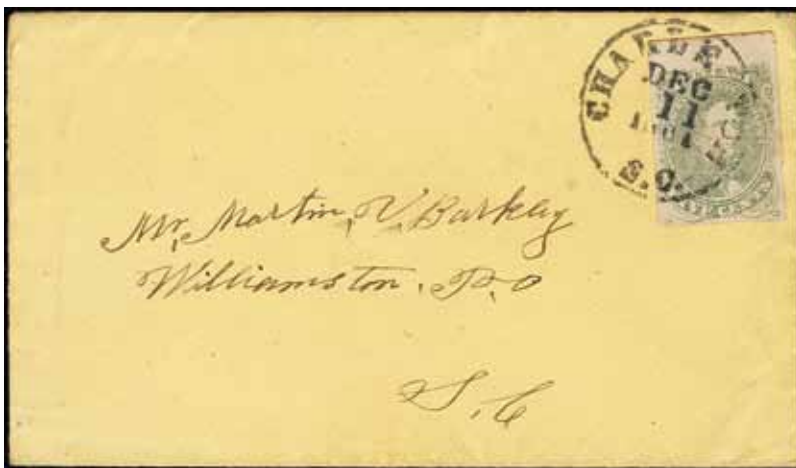


1292

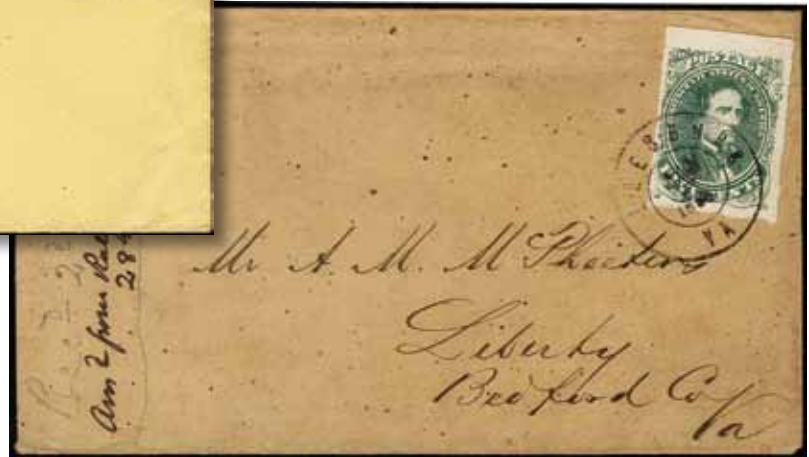
- 1291 ☒ **1, 1861 5c Green Stone 2**, single tied on yellow cover addressed to Savannah, Georgia by nicely struck “Augusta Ga 31” double circle date stamp (month removed from date slug), stamp ample to large margins, cover with 1862 docketing at left, Very Fine and choice
Provenance: James P. Myerson
- 1292 ☒ **1, 1861 5c Green**, enormous margins including portion of adjacent stamp at top and sheet margin at right, tied by “Richmond Va Jan 25 1862(?)” cds to pristine cover to Lynchburg, Virginia, Extremely Fine and choice (Scott \$300)

150

150



1293



1294

LotNo

Start Price

- | | | | |
|------|---|--|------------|
| 1293 | ✉ | <p>1, 1861 5c Green, pretty pale shade with four large balanced margins with sheet margin at top, tied by "Charleston S.C. Dec 11 1861" cds to yellow cover to Williamston, S.C., Extremely Fine and choice in every respect (Scott \$300)</p> <p><i>Provenance: James P. Myerson</i></p> | 150 |
| 1294 | ✉ | <p>1, 1861 5c Green, wonderful single with four large margins including sheet margin at top, tied by sharp "Leesburg Va Jan 31 1862" cds to cover to Liberty, Virginia, docketing at left, Extremely Fine (Scott \$300)</p> <p><i>Provenance: James P. Myerson</i></p> | 150 |

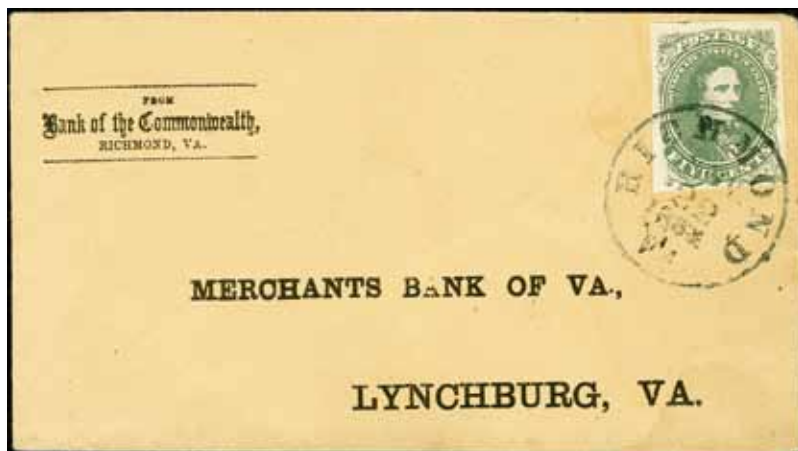


1295



1296

- | | | | |
|------|---|---|------------|
| 1295 | ✉ | <p>1, 1861 5c Green, gem single with large margins including left sheet margin, tied by wonderful strike of "Mobile Ala Mar 2 1862" cds to cover to New Providence, Alabama, slightly reduced at left, still an Extremely Fine and clean cover (Scott \$300)</p> | 150 |
| 1296 | ✉ | <p>1, 1861 5c Green, large margins, beautifully tied by blue "Norfolk Va. Mar 24 1862" double circle datestamp to cover to Lexington, Va, Extremely Fine and attractive</p> <p><i>Provenance: James P. Myerson</i></p> | 75 |



1297



1298

LotNo

Start Price

- | | | | |
|------|---|---|-----|
| 1297 | ✉ | 1c, 1861 5c Olive green, Stone A-B, stamp with large even margins, rich color, tied by crisp "Richmond Va. Nov 22 1861" cds to cover with printed cornercard of the Bank of the Commonwealth in Richmond, printed address to Lynchburg Va, trivial water stain next to stamp, Extremely Fine and attractive, 2004 Philatelic Foundation certificate | 250 |
| 1298 | ✉ | 1c, 1861 1c Olive green, single tied on a yellow envelope addressed to Blakeley, Georgia by "Montgomery Ala. Dec 7 1861" cds, stamp with sharp early impression typical of stones A or B and with full to large margins, choice Very Fine; Mac Bride description on backflap (Scott \$400) | 150 |



1299



1300

- | | | | |
|------|---|--|-----|
| 1299 | ✉ | 1c, 1861 1c Olive green, Stone 1, bottom margin single tied on envelope addressed to Yancy Hill, Virginia by on-the-nose "Winchester Va. Feb. 7" cds, stamp full balanced margins, envelope with light printing crease, Very Fine. | 150 |
| 1300 | ✉ | 2, 1861 10c Blue, Paterson printing, single tied on envelope addressed to Courtland, Alabama by centrally struck "Mobile Ala." double circle date stamp (indistinct date), manuscript "Via Tuscaloosa", stamp large balanced margins, Very Fine in every respect; MacBride description on backflap | 200 |



1301



1302

LotNo

Start Price

- | | | | |
|------|---|---|-----|
| 1301 | ✉ | 2, 1861 10c Blue, Paterson printing , single tied on small brown envelope addressed to Slabtown P.O., South Carolina by partially struck "Tudor Hall Va." cds (date indistinct), stamp with large well-balanced margins, envelope some insignificant light aging spots, Very Fine; "R.H.W. Co." (Weill Brothers) handstamp on back, 1984 Philatelic Foundation certificate (Scott \$325) | 150 |
| 1302 | ✉ | 2a, 1861-62 10c Light blue, Paterson printing , single tied on envelope addressed to Saltville, Virginia by partially struck "Knoxville Tenn Nov 23 1862" cds, stamp ample to huge margins, fresh and Very Fine; signed "AD" (Diena) | 150 |



1303



1304

- | | | | |
|------|---|--|-----|
| 1303 | ✉ | 2b, 1861-62 10c Dark blue, Hoyer and Ludwig printing , single with malformed "T" in "TEN" tied on envelope addressed to "Hon Alexander H Stephens/Vice President/Richmond Va" by well-struck "Crawfordsville Ga Mar 25" cds, docketing line at left edge and on back side, stamp with strong color and large even margins, envelope a bit roughly opened at top but still Very Fine and choice (Scott \$1,000)
Provenance: James P Myerson | 250 |
| 1304 | ✉ | 2b, 1861-62 10c Dark blue, Paterson printing , single tied on brown envelope addressed to Athens, Georgia by "Quincy Flor Apr 10" cds, stamp full to large margins, Very Fine in every respect; signed "L.L.S." (Larry Shenfield)
Provenance: Frank E. Hart | 250 |



1305



1306

LotNo

Start Price

- 1305 **2e, 1861-62 10c Light milky blue, Stone Y**, single tied on homemade envelope addressed to Mt Pleasant, North Carolina by "Richmond Va. Dec 20 1862" cds, stamp with large balanced margins, envelope opened at left, choice Very Fine, a lovely cover (Scott \$400)
- 1306 **4, 1862 5c Blue**, margins large to huge all around, tied by blue "Norfolk Va. Apr 14(?)" cds to small cover to Richmond, Virginia, Extremely Fine and fresh (Scott \$275)

200

75



Alfred H. Caspary



1308

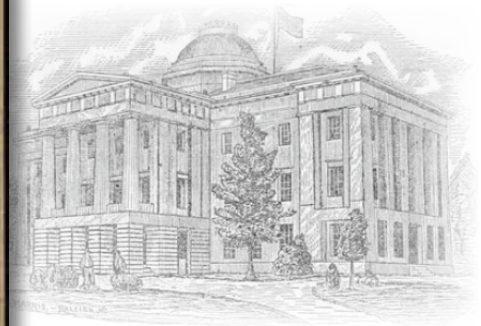


1307

- 1307 **4, 1862 5c Blue**, tied with 1862 5c Light blue (6) on envelope addressed to Richmond By lightly struck "Charleston S.S. Apr 1 1862" cds, stamps clear to full margins, envelope with central vertical bend, a Fine and unusual combination
- 1308 **5, 1862 10c Rose**, left margin single with large margins the other sides tied on cream envelope addressed to Jetersville, Virginia by partially struck "Natchez Miss. Oct. 6, 1862" cds, stamp with deep rich color, cover with tiny stain at top edge, an Extremely Fine stamp on an attractive cover. (Scott \$750)
Provenance: Alfred H. Caspary

60

350



State Capitol at Raleigh

LotNo

Start Price

- 1309** ✉ **5, 1862 10c Rose**, eye-catching single tied on envelope addressed to Salem, North Carolina by "Raleigh N.C. Aug 11 1863" double circle cancel with another strike alongside, stamp with lovely color and wide even margins, choice Very Fine; signed Holcombe and with his 1999 certificate (Scott \$750)
Provenance: August Dietz

350

1310



1311

- 1310** ✉ **5, 1862 10c Pale rose**, tied on envelope addressed to "Camp Randolph Garden County, Ga/ Through the care of Capt/ Gipson G.S.A." by well-struck "Griffin Ga. Jul 9" cds, stamp with full balanced margins, Very Fine and choice (Scott \$750)
Provenance: M. Hubert Judd

250

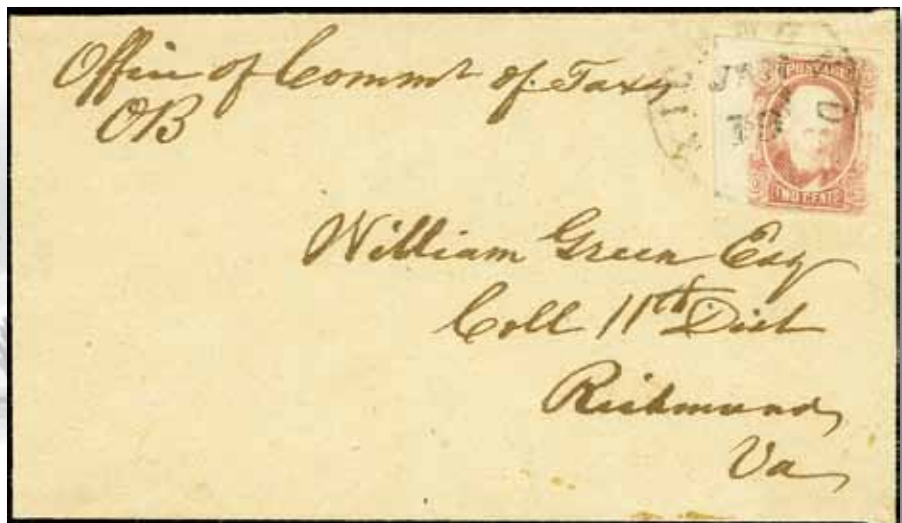
- 1311** ✉ **7, 1862 5c Blue**, Archer & Daly, remarkable bottom sheet margin pair with large margins, just tied by "Charleston S.C. Apr 30 63" cds to homemade cover to Harrington, NC, exceptionally clean and fresh, Extremely Fine, a gem in every respect

120

- 1312** **No lot**




State Capitol at Richmond



LotNo

Start Price

- 1313  **8, 1863 2c Brown red**, striking left margin single, other sides large to full, tied by "Richmond Va. Jan 19" cds on homemade drop cover, endorsed "Office of Commr. of Taxes / OB" at top, Extremely Fine and attractive, *Weill handstamp on reverse*
Provenance: James P. Myerson



400



1315



1314

- 1314  **11, 1863 10c Blue**, four huge and well-balanced margins, tied by blue "University of Virginia, Va" cds (date not legible) to neat orange cover to Charlottesville, Extremely Fine, an ideal combination of a gem stamp with a desirable cancel
- 1315  **12 var, 1863 10c Deep blue, Keatinge and Ball printing**, right margin single with wide margins the other three sides tied on envelope addressed to Richmond by "Charleston S.C. Feb 3" cds, Very Fine in every respect

75

75



Graniteville Mill



LotNo

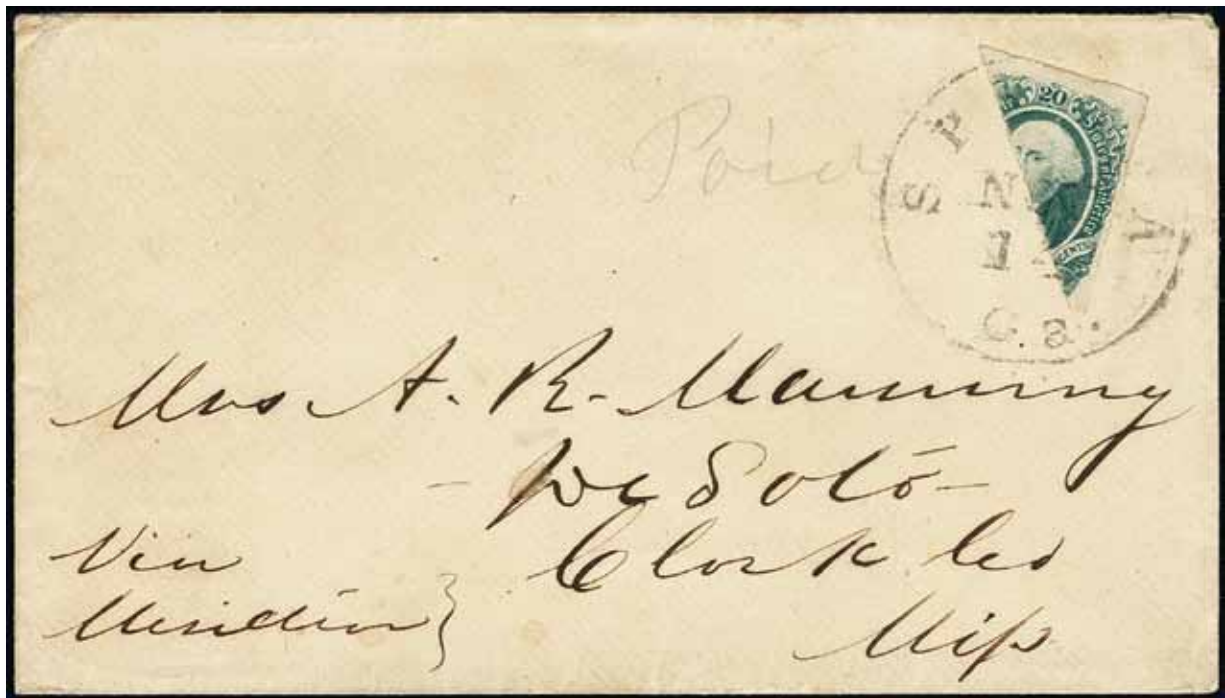
Start Price

1316



13, 1863 20c Green, single with enormous margins including portion of adjacent stamp at right, tied by Graniteville, South Carolina cds to homemade cover addressed to Greenville, South Carolina, September 1, 1864 docketing at left, Extremely Fine, this stamp alone would be one of the nicest singles we have handed in some time, the fact that it is still on cover is even more remarkable, *1998 Philatelic Foundation certificate* (Scott \$1,250)
Provenance: Judge Robert S. Emerson

500



LotNo		Start Price
1317	✉ 13d, 1863 20c Green, Diagonal half used as 10c , upper right half tied by "Sparta Ga Nov 14" (1864) on envelope addressed to DeSoto, Mississippi, manuscript "Paid" next to stamp, cover some light edge wrinkling, Very Fine (Scott \$1,400) <i>Provenance: Lawrence Shenfield</i> <i>John R. Hill, Jr</i>	250





U.S. Collections, Groups and Balances

1318	*/** Definitive Stamp Graded Balance , includes (each with 2020 PSE certificate unless otherwise noted): 213 mint (F-VF 75J), 302 mint (VF-XF 85), 303 mint (XF 90), 377 NH (VF 80J), 378 NH (VF-XF 85J), 426 NH (VF-XF 85), 428 regummed (XF 90), 429 NH (1999 PF certificate), 470 NH (F70J, tiny thin), 503 NH (XF 90J), 508 mint (VF 80), 518 NH (small tear), 561 NH (XF 90), 564 NH (VF-XF 85J, small natural gum skip), 634(CF3) (1992 Holcombe certificate), 701 mint (VF-XF 85J), a useful and attractive group (SMQ \$725+)	350
1319	Commemorative Stamps Graded Balance , includes (all with 2020 PSE certificates): 230 NH (VF-XF 85J), 235 mint (F-VF 75J), 294 NH (F 70), 295 NH (F-VF 75), 323 NH (reperforated at right), and 550 mint (VF 80J), clean group (SMQ \$195+)	80
1320	Back of the Book Graded Stamp Balance , includes (all with 2020 PSE graded certificates): C4 NH (VF-XF 85), C11 NH (XF 90J), C18 (two, NH F-VF 75J and mint VF 80), Q2 NH (XF 90), Q6 regummed (VF-XF 85), CSA 12 imprint pair no gum (XF 90), CSA 12a mint (XF-Sup 95J), attractive group (SMQ \$387+)	160
1321	*/** Oxidized Stamp Balance , group of better orange stamps which exhibit varying degrees of discoloration: 183 NH (1998 PF certificate), 287 NH (two, one with 1987 PF certificate, one with 1987 and 1997 PF certificates), 379 NH (two, one with photocopy of 1992 PF certificate for block of four, one with 1995 certificate for block of four), 429 NH (1999 PF certificate), 433 NH (1996 PF certificate), 506 NH (plate number single, 1986 PF certificate), 523 NH (1984 PF certificate), and C1 NH (two, one with 1992 PSE certificate), all Very Fine or better with some true gems, a bit of attention could bring these stamps back to life, well worth a close inspection (Scott \$2,635)	250



The Global Philatelic Network

Sell your stamps where your stamps sell best

	Auction	Auction Dates	Consignment Deadline
	Corinphila Auctions, Switzerland <i>The oldest stamp auction house in Switzerland, founded in 1919.</i>		
	International Auction	7-12 June 2021	–
	International Auction	22-27 November 2021	15 September 2021
	John Bull, Hong Kong <i>The oldest stamp auction house in Hong Kong, founded in 1975.</i>		
	Spring Auction	18-20 June 2021	–
	Autumn Auction	December 2021	15 October 2021
	H.R. Harmer, USA <i>Fine Stamp Auctions, founded in 1940.</i>		
	Spring Auction II, incl. The ERIVAN Collection – USA 5	21-24 June 2021	–
	Autumn Auction	November 2021	15 September 2021
	Corinphila Veilingen, Netherlands <i>Fine Stamp Auctions, founded in 1974.</i>		
	Autumn Auction	16-18 September 2021	15 June 2021
	Spring Auction	17-19 March 2022	15 December 2021
	Heinrich Köhler, Germany <i>The oldest stamp auction house in Germany, founded in 1913.</i>		
	Autumn Auction, incl. The ERIVAN Collection – German States 6	21-25 September 2021	15 July 2021
	Spring Auction, incl. The ERIVAN Collection – German States 7	March 2022	15 January 2022



H.R. HARMER

45 Rockefeller Plaza, Suite 2607
New York, NY 10111
U.S.A.
phone +1 929 436 2800
www.hrharmer.com



CORINPHILA VEILINGEN B.V.

Mortelmolen 3
1185 XV Amstelveen / Amsterdam
Netherlands
phone +31 20 6249740
www.corinphila.nl



HEINRICH KÖHLER AUKTIONSHAUS GMBH & CO. KG

Hasengartenstr. 25
65189 Wiesbaden
Germany
phone +49 611 341490
www.heinrich-koehler.de



CORINPHILA AUKTIONEN AG

Wiesenstr. 8
8032 Zurich
Switzerland
phone +41 44 3899191
www.corinphila.ch



JOHN BULL STAMP AUCTIONS LTD.

7/F, Kwong Fat Hong Building
1 Rumsey Street
Sheung Wan, Hong Kong
phone +852 2890 5767
www.jbull.com

The Global Philatelic Network

Sell your stamps where your stamps sell best!



The partners of The Global Philatelic Network are among the leading in stamp auction houses in Europe, United States and Asia:

HEINRICH KÖHLER AUKTIONSHAUS GMBH & CO. KG

– Germany's oldest stamp auction house, founded in 1913.

CORINPHILA AUKTIONEN AG – The oldest stamp auction house in Switzerland, founded in 1919

H.R. HARMER – Fine Stamp Auctions since 1940

CORINPHILA VEILINGEN BV – Fine stamp auctions since 1974.

JOHN BULL STAMP AUCTIONS – Hong Kong's oldest philatelic auction house, founded in 1975.

The Global Philatelic Network features decades of experience in the most relevant philatelic markets internationally, with expertise in stamps at international and national levels. The network partners are comprised of over 25 philatelic specialists from different countries, some are world renowned experts on national panels or members of the international experts group 'Association Internationale des Experts de Philatelie' (A.I.E.P.) They have access to the most important philatelic libraries, compiled over decades, where relevant publications and technical books can be found. All experts of The Global Philatelic Network have an extensive amount of experience in their profession and speak all the necessary languages.

To maximize results for your stamps: If it makes sense and is your will to auction your stamps on different continents in their 'home countries' The Global Philatelic Network will take care of all the necessary arrangements.



H.R. HARMER

45 Rockefeller Plaza, Suite 2607
New York, NY 10111
U.S.A.
phone +1 929 436 2800
www.hrharmer.com



CORINPHILA VEILINGEN B.V.

Mortelmolen 3
1185 XV Amstelveen / Amsterdam
Netherlands
phone +31 20 6249740
www.corinphila.nl



HEINRICH KÖHLER AUKTIONSHAUS GMBH & CO. KG

Hasengartenstr. 25
65189 Wiesbaden
Germany
phone +49 611 341490
www.heinrich-koehler.de



CORINPHILA AUKTIONEN AG

Wiesenstr. 8
8032 Zurich
Switzerland
phone +41 44 3899191
www.corinphila.ch



JOHN BULL STAMP AUCTIONS LTD.

7/F, Kwong Fat Hong Building
1 Rumsey Street
Sheung Wan, Hong Kong
phone +852 2890 5767
www.jbull.com

The Global Philatelic Network

Sell your stamps where your stamps sell best!



EDITION D'OR®

Successful selling begins long before consigning...



Ask for details !



**H.R.
HARMER**

45 Rockefeller Plaza, Suite 2607
New York, NY 10111
U.S.A.
phone +1 929 436 2800
www.hrharmer.com



**CORINPHILA
VEILINGEN B.V.**

Mortelmolen 3
1185 XV Amstelveen / Amsterdam
Netherlands
phone +31 20 6249740
www.corinphila.nl



**HEINRICH KÖHLER
AUKTIONSHAUS GMBH & CO. KG**

Hasengartenstr. 25
65189 Wiesbaden
Germany
phone +49 611 341490
www.heinrich-koehler.de



**CORINPHILA
AUKTIONEN AG**

Wiesenstr. 8
8032 Zurich
Switzerland
phone +41 44 3899191
www.corinphila.ch



**JOHN BULL
STAMP AUCTIONS LTD.**

7/F, Kwong Fat Hong Building
1 Rumsey Street
Sheung Wan, Hong Kong
phone +852 2890 5767
www.jbull.com

Terms and conditions

BIDDING

1. Unless announced otherwise by the auctioneer, all bids are per lot, as numbered in the printed Catalog. H.R. Harmer, as agent for the consignor or vendor, shall regulate the bidding and shall determine the manner in which the bidding shall be conducted. Harmer reserves the right to withdraw any lot prior to sale (without liability to any potential purchaser or agent), to re-offer any withdrawn lot, to divide a lot or to group two or more lots belonging to the same consignor or vendor, and to refuse any bid believed not made in good faith.
2. The highest bid acknowledged by the auctioneer shall prevail. Should a dispute arise between bidders (including a dispute between a floor bidder and the auctioneer acting on behalf of a mail bidder, consignor or vendor), the auctioneer alone shall determine who is the successful bidder and whether to reoffer the lot in dispute. Should a dispute arise after the sale, the auctioneer's sale records shall be conclusive. On all lots sold, a commission of 18% on the hammer price is payable by the buyer.
3. (a) The auctioneer reserves the right to bid on behalf of clients (and consignors or vendors) but shall not be liable for errors and omissions in executing instructions to bid, however received, and whether such errors or omissions be those of the bidder or agent or those of the auctioneer.
(b) All lots are offered subject to a reserve price. The auctioneer may implement such reserve price. The auctioneer may implement such reserve price by bidding on behalf of the consignor vendor.
(c) It may also be assumed that all consignors have been advanced monies against the sale of their stamps and Harmers therefore has a security interest over and above the normal auction commission.
(d) Purchases made by a consignor or vendor or his agent on his own lots shall be considered as a sale subject to commissions and sales tax as applicable.
(e) Agents are responsible for all purchases made on behalf of their clients, unless other arrangements have been confirmed in writing prior to the auction.
(f) HRHarmer further reserves the right to ban any bidder from participation in its' sales for any reason deemed appropriate in its' sole discretion.
(g) HRHarmer retains the right to demand a cash deposit from anyone prior to bidder registration and/or to demand payment at the time the lot is Hammered down to the highest bidder, for any reason whatsoever. In the event that any buyer refuses or fails to make payment in cash for any lot at the time it is knocked down to him, the auctioneer reserves the right to reoffer the lot for sale to the highest bidder.

PAYMENT FOR PURCHASES

4. (a) Subject to any extension of credit (which shall be made in accordance with Harmers' credit policies and requested prior to the commencement of the auction), payment for lots shall be as follows:
 - (i) Floor Bidders. All floor bidders must register prior to the beginning of sale. All invoices to Floor Bidders shall be due on the day of the auction.
 - (ii) Mail Bidders. A successful mail bidder will be notified of lots purchased. Payment is due within ten (10) business days of auction. Mailed delivery will be to the address on the bid sheet and proof by Harmers of receipt of a sending at the advised address shall constitute delivery. All charges for handling and delivery shall be added to your invoice. All shipments sent by Harmers are fully insured against loss in transit unless otherwise requested.
 - (iii) Where an opinion of a generally recognized authority is desired, payment is still due within ten (10) business days of auction. We will hold the funds while we send the items to the recognized authorities.
- (b) Payment is accepted in the form of
 - (i) Check in U.S. dollars drawn on a U.S. bank. If payment is made by check, Harmer's reserves the right to hold shipment/delivery for up to ten (10) business days while it clears.
 - (ii) By wire transfer. Harmers will credit your account with the actual USD credited to our account net of any fees.
 - (iii) By credit card (MasterCard, Discover or Visa). Payment by credit card is accepted as payment but will be subject to a 3% Convenience fee. This fee will be added to the total of the invoice including hammer price, buyer's premium, shipping and other applicable taxes and fees.

TITLE; DEFAULT

5. (a) Subject to the fulfillment of all of the conditions set forth herein, on the fall of the auctioneer's hammer, title to the offered lot will pass to the highest bidder acknowledged by the auctioneer, and such bidder thereupon (a) assumes full risk and responsibility therefore, and (b) will pay the purchase price as set forth in Conditions of Sale 4.
(b) In addition to other remedies available to us by law, we reserve the right to impose from the date of sale a late charge of 2% per month if payment is not made in accordance with the conditions set forth herein. Unless otherwise agreed by Harmers, all property must be removed from our premises by the purchaser at his expense not later than 10 business days following its sale.
(c) If any applicable conditions herein are not complied with by the purchaser, the purchaser will be in default and in addition to any and all other remedies available to us and the Consignor by law, including, without limitation, the right to hold the purchaser liable for the total purchase price, including all fees, charges and expenses more fully set forth herein, we, at our option, may (x) cancel the sale of that, or any other lot or lots sold to the defaulting purchaser at the same or any other auction, retaining as liquidated damages all payments made by the purchaser, or (y) resell the purchased property, whether at public auction or by private sale, or (z) effect any combination thereof. In any case, the purchaser will be liable for any deficiency, any and all costs, handling charges, late charges, expenses of both sales, our commissions on both sales at our regular rates, legal fees and expenses, collection fees and incidental damages. We may, in our sole discretion, apply any proceeds of sale then due or thereafter becoming due to the purchaser from us or any affiliated company, or any payment made by the purchaser to us or any affiliated company, whether or not intended to reduce the purchaser's obligations with respect to the unpaid lot or lots, to the deficiency and any other amounts due to us or any affiliated companies. In addition, a defaulting purchaser will be deemed to have granted and assigned to us and our affiliated companies, a continuing security interest of first priority in any property or money of or owing to such purchaser in our possession or in the possession of any of our affiliated companies, and we may retain and apply such property or money as collateral security for the obligations due to us or to any affiliated company of ours. We shall have all of the rights accorded a secured party under the New York Uniform Commercial Code (UCC).
(d) Payment will not be deemed to have been made in full until we have collected good funds. Any claims relating to any purchase, including any claims under the Conditions of Sale, must be presented directly to Harmer. In the event the purchaser fails to pay any or all of the total purchase price for any lot and Harmer nonetheless elects to pay the Consignor any portion of the sale proceeds, the purchaser acknowledges that Harmers shall have all of the rights of the Consignor to pursue the purchaser for any amounts paid to the Consignor, whether at law, in equity, or under these Conditions of Sale.

EXHIBITION AND INSPECTION OF LOTS; QUALITY AND AUTHENTICITY

7. (a) On Premises Inspection and Postal Viewing. Ample opportunity is given for on premises inspection prior to the auction date, and, upon written request and at Harmers discretion, for inspection by postal viewing (all as detailed elsewhere in this Catalog).
(b) Each lot is sold as genuine and correctly described, based on individual description as modified by any specific notations in this Catalog, including but not restricted to the section entitled "Key to Cataloguing".
(c) Quality. Any lot which a purchaser considers to be incorrectly described may be returned to Harmers within two weeks of its receipt by such purchaser ("Returning Purchaser"), provided, however, that the same is received by Harmers within four weeks of the date of the auction; however, Harmers may, in its discretion, refuse acceptance of such returned lot. If an opinion of a generally recognized authority is desired, the period of time within which a lot must be received by Harmers will be extended in accordance with Condition of Sale 8. In the event that a dispute cannot be resolved by reference to a generally recognized authority, and Harmers thereupon undertakes to re-offer the lot with a description identical to the description disputed, the Returning Purchaser shall be liable for the deficiency, if any, between the proceeds of the sale to the Returning Purchaser and the proceeds of a sale to a subsequent purchaser, as well as for all costs and expenses of the re-sale, including commission, and all incidental damages. Any lot, the description of which is disputed, must be returned intact in the condition received by the purchaser. The following lots are not returnable except at the discretion of Harmers: (i) lots from purchasers who attended the exhibition of the lots; (ii) lots examined by postal viewers; (iii) lots on account of their appearance, if they are

illustrated in this Catalog; (iv) lots described as having repairs, defects or faults— for any reason; (v) U.S. stamps (through 1918) for reasons of paper inclusions, (vi) no encapsulated stamps unless originally offered in this condition. (vii) Multiple stamp/item lots including sets of 15 or more stamps, collections, large lots and group lots, whether certified or not, as sold "As Is" and are not returnable for any reason.

(d) Authenticity. Any lot which is declared otherwise than genuine by a generally recognized authority is returnable, provided such lot is received by Harmers within four weeks of the date of the auction. Proof that a generally recognized authority declines to express an opinion is not grounds for the return of a lot.

(e) Expenses incurred in the submission and the return of a lot under Conditions of Sale 7-9 are not refunded.

EXTENSION OF TIME

8. All lots to be sent out on extension must be paid in advance and submitted by H.R. Harmer.
 - (a) If a lot is certified by a generally recognized authority to be other than as described:
 - (i) the sale (and the invoice with respect thereto, if outstanding) will be cancelled; and
 - (ii) to the extent set forth in Condition of Sale 9, payment of the expense of certification will be made to the purchaser.
 - (iii) in the event any item "not as described", the buyer will be refunded the purchase price and certification fee up to \$500 unless otherwise agreed.
 - (b) Any lot with a P.F. or PSE certificate issued in the last six years is not eligible for extension.

EXPENSES OF CERTIFICATION

9. Expenses of certification shall be borne by the purchaser except where a lot is certified other than as described and is returned to Harmers in accordance with Condition of Sale 8.

SALES TAX

10. All lots sold are subject to any applicable sales tax (or customs duty for non-U.S. buyers) unless a valid resale permit is presented.

SHIPPING OF PURCHASED LOTS TO ADDRESSES OUTSIDE THE UNITED STATES

11. Lots will be shipped by Federal Express (street addresses) or by USPS-Express Mail (PO boxes) with a minimum fee of US\$50 per shipment. If you wish to have your purchases delivered by another method, you must make your request in writing before the sale. You will need to prepay your invoice in full and guarantee that once the package is accepted by the postal service or other courier that HR Harmer, GPN Inc. is not liable for any loss or damage to the package, and that should any loss or damage take place, HR Harmer, GPN Inc. is not obligated to make refund or restitution.

JURISDICTION, VENUE, CHOICE OF LAW:

12. (a) Dispute resolution shall occur in New York County, New York, USA. The provisions of the Conditions of Sale will be construed and disputes determined by application of New York Law.
(b) Notice, Service of Process: Buyers agree to accept all notices and service of process relating to dispute resolution at the address provided by Buyer on any registration forms required to be executed as a condition of bidding in our auction.

(c) Dispute Resolution: All disputes and claims arising out of or relating to events and actions covered herein, brought by or against us, shall be resolved by mediation or binding arbitration in accord with the procedures set forth below. This provision does not apply to claims brought by the Buyer directly against the Consignor, including, but not limited to any action brought pursuant to the rescission provisions noted above.

MEDIATION AND ARBITRATION PROCEDURES

13. (a) Within 30 days of written notice that there is a dispute, the parties or their representatives may meet at a time and place mutually agreed upon, to mediate their differences. If the parties agree, a mediator acceptable to the parties shall be selected. The mediator shall be an attorney, trained in mediation techniques and familiar with commercial law and the UCC. The mediator's fees shall be shared equally and paid by all parties. At the mediation, all parties shall have actual authority to settle the dispute. Any statements made during, and all aspects of, the mediation process shall be kept confidential and shall not be admissible in any subsequent arbitration or judicial proceeding. Any resolution shall be confidential.
(b) If the parties cannot agree to mediation, or if mediation does not resolve the dispute, or in any event no longer than 60 days after receipt of written notice referred to above, the parties shall submit the dispute for binding arbitration before a single neutral arbitrator jointly selected, or absent agreement, selected from the panel of Arbitrators provided by the American Arbitration Association (AAA). If, within 15 days, the parties cannot agree on an arbitrator, then AAA shall select one (1) person as arbitrator in accord with AAA rules. The arbitrator shall be an attorney, experienced in commercial law and with the UCC. The arbitrator shall be required to follow the law in making his award, and the award shall be in writing and shall set forth findings of fact and legal conclusions.
(c) The arbitration shall occur within 60 days of the selection of the arbitrator, in New York County, New York, unless the parties agree to another location. Discovery and the procedure for the Arbitration shall, unless otherwise agreed to by the parties, follow the procedures and policies of AAA governing commercial arbitration, subject however to the following modifications:

All arbitration proceedings shall be confidential. None of the parties nor the arbitrator may disclose the existence, content or results of the arbitration without the written consent of all parties.

The parties shall attempt to agree on the issues to be arbitrated, or identify the disputed issues in writing no later than 45 days prior to arbitration.

Unless otherwise agreed by the parties, discovery, if any, shall be limited as follows:

- (a) Requests for no more than 10 clearly identified categories of documents, to be provided to the requesting party within 14 days of written request therefore;
- (b) Depositions: No more than two (2) per party, provided however, the deposition(s) are to be completed within one (1) day; (c) Compliance with the above shall be enforced by the arbitrator in accord with New York law.

Each party shall have no longer than eight (8) hours to present its position. The entire hearing before the arbitrator shall not take longer than three (3) consecutive days, unless all parties agree otherwise in writing. (d) The award shall be made in writing no more than 30 days following the end of the proceeding. Judgment upon the award rendered by the arbitrator may be entered by any court having jurisdiction thereof. Each party shall bear its own attorney's fees and costs in connection with the proceedings and shall share equally the fees and expenses of the arbitrator.

H.R.HARMER

EST. 1940

FINE STAMP AUCTIONS

June 22, 2021
Public Auction 3045

H.R. HARMER

45 Rockefeller Plaza, Suite 2607

New York, NY 10111

Phone: (929) 436-2800

Fax: 714.389.9189

Email: info@hrharmer.com

Website: www.hrharmer.com

Please limit my total purchases to:

\$

(not including Buyer's Premium)

Note: Limits of less than \$1000 are respectfully declined.

**BIDS BELOW THE LISTING START
PRICE WILL NOT BE ACCEPTED**

Name _____

Customer No. _____ Paddle No. _____

Address _____

City _____

State _____ Zip _____

Phone Day _____

Phone Evening _____

Email _____

Dealer References _____

New York Resale Number _____

Please supply shipping address if different from above.

Please bid for me in accordance with your Terms and Conditions of Sale, which I have read and agree to. I have indicated below my maximum bid for each lot. I understand that you will execute my bids at one bid increment over the next highest bid and that you will not use my maximum bid unless necessary to secure the lot.

I agree to pay for all purchases immediately upon notification.

I understand a buyer's premium of 18% will be added to the total of my purchases.

Signed _____

Please charge my purchases to my Master/Visa/Discover Card

Credit card payments will be subject to a 3% convenience fee.

Exp. _____ CCV# _____

Billing Zip Code: _____

LOT	BID	LOT	BID	LOT	BID	LOT	BID	LOT	BID

A Buyer's Premium of 18% will be added to the hammer price of each lot.

REMOVE OR MAKE PHOTOCOPY FOR ADDITIONAL BIDS

[illegible]

Bidding Increments

Up to \$100	Increase by \$5	\$5,000 to \$10,000.	Increase by \$500
\$100 to \$250	Increase by \$10	\$10,000 to \$25,000.	Increase by \$1,000
\$250 to \$750	Increase by \$25	\$25,000 to \$50,000.	Increase by \$2,500
\$750 to \$1,000	Increase by \$50	\$50,000 to \$100,000	Increase by \$5,000
\$1,000 to \$2,500.	Increase by \$100	Above \$100,000	Auctioneer's discretion
\$2,500 to \$5,000.	Increase by \$250		

A Buyer's Premium of 18% will be added to the hammer price of each lot.

H.R. HARMER



EST · 1940



FINE STAMP AUCTIONS

www.hrharmer.com · info@hrharmer.com

Phone 929.436.2800

H.R. Harmer · Global Philatelic Network · USA
45 Rockefeller Plaza · 630 Fifth Avenue Suite 2607
New York · New York 10111



H. R. HARMER

Global Philatelic Network, Inc.

PHILATELIC AUCTIONEERS

2680 Walnut Ave Suite AB
Tustin, CA 92780-7052
EMAIL: info@hrharmer.com
Phone: 714-389-9178

Sales #3043-46

June 21, 2021 - June 25, 2021

lot	sold	lot	sold	lot	sold	lot	sold	lot	sold	lot	sold
1001	1,700.00	1039	140.00	1077	275.00	1117	350.00	1155	375.00	1193	230.00
1002	575.00	1040	550.00	1078	725.00	1118	750.00	1156	1,100.00	1194	110.00
1003	275.00	1041	1,200.00	1079	210.00	1119	10.00	1157	2,750.00	1195	110.00
1004	300.00	1042	1.20	1080	800.00	1120	140.00	1158	1,500.00	1196	160.00
1005	5,750.00	1043	3,000.00	1081	230.00	1121	160.00	1159	2,200.00	1197	160.00
1006	1,700.00	1044	1,200.00	1082	650.00	1122	250.00	1160	6,500.00	1198	130.00
1007	575.00	1045	85.00	1083	75.00	1123	80.00	1161	75.00	1199	120.00
1008	1,300.00	1046	275.00	1084	950.00	1124	70.00	1162	140.00	1200	625.00
1009	900.00	1047	110.00	1085	1,300.00	1125	85.00	1163	250.00	1201	210.00
1010	625.00	1048	575.00	1087	200.00	1126	50.00	1164	65.00	1202	375.00
1011	300.00	1049	1,100.00	1088	120.00	1127	70.00	1165	65.00	1203	1,100.00
1012	575.00	1050	60.00	1089	120.00	1128	65.00	1166	85.00	1204	300.00
1013	300.00	1051	80.00	1090	180.00	1129	190.00	1167	130.00	1205	110.00
1014	350.00	1052	1,100.00	1091	180.00	1130	275.00	1168	55.00	1206	130.00
1015	2,100.00	1053	750.00	1092	170.00	1131	110.00	1169	190.00	1207	190.00
1016	625.00	1054	500.00	1093	170.00	1132	425.00	1170	70.00	1208	325.00
1017	675.00	1055	275.00	1094	170.00	1133	550.00	1171	140.00	1209	110.00
1018	575.00	1056	100.00	1095	50.00	1134	1,500.00	1172	45.00	1210	140.00
1019	550.00	1057	150.00	1096	85.00	1135	75.00	1173	275.00	1211	110.00
1020	900.00	1058	110.00	1097	210.00	1136	10.00	1174	55.00	1212	110.00
1021	1,200.00	1059	300.00	1098	275.00	1137	300.00	1175	475.00	1213	160.00
1022	400.00	1060	100.00	1099	375.00	1138	275.00	1176	120.00	1214	150.00
1023	650.00	1061	600.00	1101	500.00	1139	190.00	1177	1,800.00	1215	160.00
1024	350.00	1062	210.00	1102	180.00	1140	250.00	1178	6,500.00	1216	250.00
1025	8,500.00	1063	1,400.00	1103	400.00	1141	130.00	1179	120.00	1217	675.00
1026	350.00	1064	350.00	1104	220.00	1142	325.00	1180	150.00	1218	850.00
1027	220.00	1065	275.00	1105	230.00	1143	130.00	1181	375.00	1219	450.00
1028	220.00	1066	300.00	1106	90.00	1144	75.00	1182	70.00	1220	180.00
1029	350.00	1067	2,750.00	1107	170.00	1145	275.00	1183	60.00	1221	400.00
1030	180.00	1068	1,300.00	1108	50.00	1146	275.00	1184	850.00	1222	325.00
1031	275.00	1069	1,800.00	1109	350.00	1147	110.00	1185	230.00	1223	190.00
1032	3,000.00	1070	750.00	1110	625.00	1148	160.00	1186	250.00	1224	230.00
1033	1,100.00	1071	300.00	1111	75.00	1149	70.00	1187	55.00	1225	120.00
1034	1,600.00	1072	80.00	1112	75.00	1150	230.00	1188	600.00	1226	350.00
1035	240.00	1073	400.00	1113	55.00	1151	65.00	1189	120.00	1227	400.00
1036	300.00	1074	100.00	1114	55.00	1152	220.00	1190	275.00	1228	275.00
1037	180.00	1075	350.00	1115	1,100.00	1153	150.00	1191	120.00	1229	160.00
1038	120.00	1076	150.00	1116	2,000.00	1154	950.00	1192	170.00	1230	750.00

All prices in USD

AUCTIONEERS OF "FRANKLIN D. ROOSEVELT," "CASPARY,"
"DALE," "HIND" and OTHER MAJOR COLLECTIONS



H. R. HARMER

Global Philatelic Network, Inc.

PHILATELIC AUCTIONEERS

2680 Walnut Ave Suite AB
Tustin, CA 92780-7052
EMAIL: info@hrharmer.com
Phone: 714-389-9178

Sales #3043-46

June 21, 2021 - June 25, 2021

lot	sold	lot	sold	lot	sold	lot	sold	lot	sold	lot	sold
1231	180.00	1269	800.00	1308	1,400.00	2030	100.00	2070	450.00	2112	140.00
1232	95.00	1270	2,100.00	1309	650.00	2031	130.00	2071	150.00	2114	500.00
1233	85.00	1271	275.00	1310	725.00	2032	150.00	2072	800.00	2115	240.00
1234	230.00	1272	160.00	1311	300.00	2033	230.00	2073	150.00	2116	75.00
1235	95.00	1273	250.00	1313	525.00	2034	240.00	2075	300.00	2117	80.00
1236	160.00	1274	350.00	1314	110.00	2035	140.00	2076	100.00	2118	450.00
1237	275.00	1275	220.00	1315	120.00	2036	1,600.00	2078	300.00	2119	650.00
1238	900.00	1276	300.00	1316	1,100.00	2037	4,000.00	2079	525.00	2120	50.00
1239	80.00	1277	525.00	1317	850.00	2038	1,400.00	2080	50.00	2121	130.00
1240	35.00	1278	750.00	1318	1,000.00	2040	400.00	2081	50.00	2122	750.00
1241	450.00	1279	500.00	1319	90.00	2042	625.00	2083	95.00	2123	120.00
1242	110.00	1280	275.00	1320	170.00	2043	900.00	2084	85.00	2124	325.00
1243	90.00	1281	600.00	1321	1,600.00	2044	625.00	2085	70.00	2125	75.00
1244	210.00	1282	95.00	2001	210.00	2045	1,200.00	2086	10.00	2126	85.00
1245	180.00	1283	3,750.00	2002	85.00	2046	475.00	2087	375.00	2127	110.00
1246	120.00	1285	230.00	2003	95.00	2047	300.00	2088	210.00	2128	1,100.00
1247	140.00	1286	75.00	2004	200.00	2048	2,750.00	2089	50.00	2129	1,200.00
1248	65.00	1287	200.00	2005	200.00	2049	2,500.00	2090	60.00	2130	275.00
1249	70.00	1288	30.00	2006	1,000.00	2050	575.00	2091	400.00	2131	300.00
1250	325.00	1289	300.00	2007	210.00	2051	275.00	2092	100.00	2132	300.00
1251	45.00	1290	230.00	2010	160.00	2052	475.00	2093	500.00	2133	2,750.00
1252	55.00	1291	170.00	2011	150.00	2053	650.00	2094	100.00	2134	220.00
1253	2,300.00	1292	400.00	2012	120.00	2054	2,100.00	2095	150.00	2135	250.00
1254	2,100.00	1293	150.00	2013	2,100.00	2055	725.00	2097	150.00	2136	75.00
1255	275.00	1294	170.00	2016	150.00	2056	2,100.00	2098	50.00	2137	110.00
1256	160.00	1295	150.00	2017	325.00	2057	2,500.00	2099	1,100.00	2138	150.00
1257	140.00	1296	200.00	2018	350.00	2058	120.00	2100	425.00	2139	300.00
1258	95.00	1297	350.00	2019	220.00	2059	525.00	2101	300.00	2140	1,200.00
1259	230.00	1298	190.00	2020	110.00	2060	375.00	2102	100.00	2141	575.00
1260	325.00	1299	180.00	2021	170.00	2061	900.00	2103	170.00	2142	2,200.00
1261	425.00	1300	230.00	2022	130.00	2062	550.00	2104	1,600.00	2144	425.00
1262	110.00	1301	275.00	2023	200.00	2063	425.00	2105	350.00	2145	575.00
1263	140.00	1302	150.00	2024	140.00	2064	675.00	2106	325.00	2146	575.00
1264	250.00	1303	350.00	2025	275.00	2065	1,600.00	2107	550.00	2147	475.00
1265	220.00	1304	350.00	2026	130.00	2066	85.00	2108	500.00	2148	400.00
1266	400.00	1305	160.00	2027	275.00	2067	75.00	2109	95.00	2149	275.00
1267	160.00	1306	110.00	2028	140.00	2068	160.00	2110	500.00	2150	475.00
1268	2,200.00	1307	150.00	2029	100.00	2069	210.00	2111	300.00	2151	550.00

All prices in USD

AUCTIONEERS OF "FRANKLIN D. ROOSEVELT," "CASPARY,"
"DALE," "HIND" and OTHER MAJOR COLLECTIONS



H. R. HARMER

Global Philatelic Network, Inc.

PHILATELIC AUCTIONEERS

2680 Walnut Ave Suite AB
Tustin, CA 92780-7052
EMAIL: info@hrharmer.com
Phone: 714-389-9178

Sales #3043-46

June 21, 2021 - June 25, 2021

lot	sold	lot	sold	lot	sold	lot	sold	lot	sold	lot	sold
2152	425.00	2201	190.00	2245	60.00	2284	210.00	2324	2,200.00	2361	100.00
2153	475.00	2202	220.00	2246	275.00	2285	600.00	2325	3,000.00	2362	210.00
2154	150.00	2204	275.00	2247	450.00	2286	1,000.00	2326	180.00	2363	350.00
2156	150.00	2205	110.00	2248	170.00	2287	200.00	2327	2,000.00	2364	50.00
2159	150.00	2206	80.00	2249	240.00	2288	325.00	2328	2,200.00	2365	10.00
2160	150.00	2207	50.00	2250	75.00	2289	100.00	2329	650.00	2366	60.00
2163	170.00	2208	85.00	2251	120.00	2290	230.00	2330	475.00	2367	50.00
2165	350.00	2210	50.00	2252	1,200.00	2291	575.00	2331	2,750.00	2368	220.00
2166	500.00	2211	75.00	2253	350.00	2292	700.00	2332	220.00	2369	120.00
2167	100.00	2214	400.00	2254	450.00	2293	75.00	2333	240.00	2370	500.00
2168	1,600.00	2215	425.00	2255	750.00	2295	55.00	2334	210.00	2371	150.00
2171	150.00	2216	90.00	2256	220.00	2296	350.00	2334A	130.00	2372	130.00
2172	500.00	2217	50.00	2257	350.00	2297	150.00	2335	325.00	2373	220.00
2173	60.00	2218	75.00	2258	275.00	2298	210.00	2336	400.00	2374	65.00
2174	50.00	2219	210.00	2259	575.00	2299	450.00	2337	50.00	2375	50.00
2175	50.00	2220	100.00	2260	575.00	2300	150.00	2338	220.00	2376	250.00
2176	375.00	2221	180.00	2261	275.00	2301	50.00	2339	450.00	2377	85.00
2177	200.00	2222	250.00	2262	350.00	2302	85.00	2340	450.00	2378	210.00
2179	120.00	2223	120.00	2263	275.00	2303	110.00	2341	425.00	2379	230.00
2180	75.00	2224	425.00	2264	3,500.00	2304	75.00	2342	475.00	2380	550.00
2181	200.00	2225	400.00	2265	1,500.00	2305	160.00	2343	350.00	2381	160.00
2182	250.00	2227	75.00	2266	210.00	2306	1,200.00	2344	400.00	2382	60.00
2183	75.00	2228	50.00	2267	475.00	2307	9,500.00	2345	220.00	2383	220.00
2184	75.00	2229	1,300.00	2268	350.00	2308	60.00	2346	275.00	2384	85.00
2186	1,600.00	2230	55.00	2269	325.00	2309	275.00	2347	120.00	2385	425.00
2187	75.00	2231	180.00	2270	130.00	2310	500.00	2348	350.00	2386	220.00
2188	500.00	2232	220.00	2272	325.00	2312	110.00	2349	120.00	2387	275.00
2189	275.00	2233	50.00	2273	400.00	2313	170.00	2350	160.00	2388	200.00
2190	200.00	2234	180.00	2274	75.00	2314	110.00	2351	325.00	2389	190.00
2191	60.00	2235	110.00	2275	210.00	2315	275.00	2352	500.00	2390	150.00
2192	75.00	2236	300.00	2276	525.00	2316	240.00	2353	900.00	2391	170.00
2193	75.00	2237	60.00	2277	425.00	2317	80.00	2354	210.00	2392	220.00
2194	300.00	2238	85.00	2278	210.00	2318	160.00	2355	375.00	2394	180.00
2196	275.00	2239	160.00	2279	325.00	2319	140.00	2356	275.00	2395	170.00
2197	190.00	2240	110.00	2280	70.00	2320	2,100.00	2357	900.00	2397	100.00
2198	60.00	2241	240.00	2281	100.00	2321	2,000.00	2358	600.00	2398	50.00
2199	220.00	2242	50.00	2282	220.00	2322	3,000.00	2359	170.00	2401	475.00
2200	120.00	2244	50.00	2283	600.00	2323	800.00	2360	275.00	2402	275.00

All prices in USD

AUCTIONEERS OF "FRANKLIN D. ROOSEVELT," "CASPARY,"
"DALE," "HIND" and OTHER MAJOR COLLECTIONS



H. R. HARMER

Global Philatelic Network, Inc.

PHILATELIC AUCTIONEERS

2680 Walnut Ave Suite AB
Tustin, CA 92780-7052
EMAIL: info@hrharmer.com
Phone: 714-389-9178

Sales #3043-46

June 21, 2021 - June 25, 2021

lot	sold	lot	sold	lot	sold	lot	sold	lot	sold	lot	sold
2403	160.00	2544	200.00	2629	1,100.00	3024	100.00	3066	100.00	3112	80.00
2404	40.00	2545	160.00	2630	800.00	3025	75.00	3068	375.00	3113	80.00
2405	325.00	2548	350.00	2631	1,100.00	3026	575.00	3069	100.00	3114	160.00
2406	50.00	2550	50.00	2632	425.00	3027	170.00	3070	75.00	3115	170.00
2407	100.00	2552	50.00	2634	375.00	3028	90.00	3071	240.00	3116	190.00
2408	275.00	2554	300.00	2637	150.00	3029	210.00	3072	400.00	3117	70.00
2409	450.00	2555	300.00	2638	350.00	3030	120.00	3074	240.00	3118	150.00
2410	160.00	2561	230.00	2641	1,400.00	3032	50.00	3075	300.00	3119	275.00
2411	300.00	2562	375.00	2662	100.00	3033	80.00	3076	375.00	3121	160.00
2412	3,250.00	2563	100.00	2669	625.00	3035	90.00	3077	300.00	3122	190.00
2503	500.00	2565	100.00	2670	300.00	3036	475.00	3078	210.00	3123	180.00
2504	50.00	2566	325.00	2671	300.00	3037	110.00	3079	525.00	3124	180.00
2506	750.00	2567	150.00	2673	200.00	3038	180.00	3080	100.00	3125	230.00
2507	600.00	2568	240.00	2675	50.00	3039	3,250.00	3081	725.00	3126	100.00
2508	150.00	2570	200.00	2677	50.00	3041	55.00	3082	800.00	3127	160.00
2510	200.00	2571	200.00	2700	250.00	3042	300.00	3083	475.00	3128	15.00
2512	200.00	2580	150.00	2704	85.00	3043	750.00	3084	400.00	3129	725.00
2513	100.00	2583	150.00	2705	1,000.00	3044	300.00	3085	1,600.00	3130	1,300.00
2514	75.00	2584	350.00	3001	160.00	3045	190.00	3086	210.00	3133	275.00
2515	120.00	2585	210.00	3003	100.00	3046	950.00	3087	65.00	3134	230.00
2516	500.00	2586	100.00	3004	100.00	3047	140.00	3088	50.00	3135	275.00
2517	150.00	2587	170.00	3005	200.00	3048	240.00	3089	130.00	3136	150.00
2518	150.00	2588	150.00	3006	150.00	3049	250.00	3090	95.00	3137	200.00
2519	150.00	2595	950.00	3008	150.00	3050	1,300.00	3091	350.00	3138	275.00
2520	75.00	2599	200.00	3009	140.00	3051	180.00	3092	500.00	3139	230.00
2522	100.00	2600	100.00	3010	130.00	3052	85.00	3096	110.00	3140	100.00
2523	150.00	2601	200.00	3011	120.00	3053	180.00	3097	130.00	3141	160.00
2524	75.00	2602	200.00	3012	180.00	3054	300.00	3099	230.00	3142	120.00
2525	100.00	2603	300.00	3013	50.00	3055	75.00	3101	15.00	3143	210.00
2526	120.00	2605	750.00	3014	210.00	3056	425.00	3102	50.00	3144	150.00
2527	100.00	2606	300.00	3015	100.00	3057	160.00	3103	130.00	3145	100.00
2530	200.00	2608	300.00	3016	110.00	3058	2,200.00	3104	80.00	3146	120.00
2532	150.00	2611	130.00	3017	130.00	3059	400.00	3105	250.00	3147	100.00
2533	190.00	2612	100.00	3018	110.00	3060	230.00	3106	130.00	3148	675.00
2536	300.00	2615	1,000.00	3019	230.00	3061	130.00	3107	30.00	3149	70.00
2539	100.00	2621	850.00	3021	120.00	3063	75.00	3109	150.00	3150	120.00
2540	150.00	2622	800.00	3022	100.00	3064	200.00	3110	160.00	3151	100.00
2541	700.00	2628	1,200.00	3023	75.00	3065	75.00	3111	2,500.00	3152	150.00

All prices in USD

AUCTIONEERS OF "FRANKLIN D. ROOSEVELT," "CASPARY,"
"DALE," "HIND" and OTHER MAJOR COLLECTIONS



H. R. HARMER

Global Philatelic Network, Inc.

PHILATELIC AUCTIONEERS

2680 Walnut Ave Suite AB
Tustin, CA 92780-7052
EMAIL: info@hrharmer.com
Phone: 714-389-9178

Sales #3043-46

June 21, 2021 - June 25, 2021

lot	sold	lot	sold	lot	sold	lot	sold	lot	sold	lot	sold
3153	140.00	3235	200.00	3280	800.00	3324	100.00	3367	120.00	3406	75.00
3154	130.00	3236	375.00	3281	1,200.00	3325	400.00	3368	150.00	3407	1,200.00
3155	2,200.00	3237	50.00	3282	150.00	3326	600.00	3369	210.00	3409	200.00
3156	160.00	3238	450.00	3283	150.00	3327	850.00	3370	120.00	3410	160.00
3157	180.00	3239	230.00	3284	575.00	3329	45.00	3371	180.00	3411	60.00
3158	250.00	3240	220.00	3285	200.00	3330	75.00	3372	3,250.00	3412	80.00
3159	275.00	3241	425.00	3286	120.00	3331	550.00	3373	60.00	3413	95.00
3201	190.00	3243	140.00	3287	160.00	3332	800.00	3374	40.00	3414	75.00
3202	160.00	3244	275.00	3288	95.00	3333	65.00	3375	350.00	3416	50.00
3203	350.00	3245	850.00	3289	210.00	3334	130.00	3376	2,750.00	3418	90.00
3204	130.00	3248	300.00	3294	160.00	3335	160.00	3378	45.00	3419	45.00
3205	850.00	3250	170.00	3295	140.00	3336	375.00	3379	55.00	3420	60.00
3206	500.00	3251	140.00	3296	170.00	3338	170.00	3380	60.00	3421	50.00
3207	275.00	3252	425.00	3297	75.00	3339	40.00	3381	120.00	3422	110.00
3208	160.00	3253	500.00	3299	275.00	3340	350.00	3382	300.00	3423	110.00
3209	500.00	3254	375.00	3300	375.00	3341	160.00	3383	575.00	3424	90.00
3210	425.00	3255	230.00	3301	325.00	3344	170.00	3384	200.00	3425	275.00
3211	425.00	3256	1,600.00	3302	10.00	3345	275.00	3385	50.00	3426	60.00
3212	450.00	3258	140.00	3303	120.00	3346	130.00	3386	85.00	3427	150.00
3214	75.00	3260	100.00	3304	180.00	3347	725.00	3387	550.00	3428	475.00
3216	250.00	3261	750.00	3305	65.00	3348	50.00	3388	85.00	3429	75.00
3217	85.00	3262	750.00	3306	110.00	3349	170.00	3389	50.00	3430	100.00
3218	120.00	3263	65.00	3307	325.00	3350	750.00	3390	120.00	3431	160.00
3219	95.00	3264	170.00	3308	85.00	3351	220.00	3391	95.00	3432	1,200.00
3220	300.00	3265	170.00	3309	120.00	3352	80.00	3392	150.00	3433	150.00
3221	200.00	3266	650.00	3310	210.00	3353	230.00	3393	110.00	3434	160.00
3222	120.00	3267	500.00	3311	130.00	3354	200.00	3394	45.00	3436	50.00
3223	120.00	3268	60.00	3312	75.00	3356	80.00	3395	100.00	3437	250.00
3224	300.00	3269	55.00	3313	60.00	3357	80.00	3396	100.00	3439	275.00
3225	240.00	3270	950.00	3314	110.00	3358	90.00	3397	50.00	3440	200.00
3227	210.00	3271	140.00	3315	190.00	3359	60.00	3398	95.00	3441	110.00
3228	500.00	3272	150.00	3316	140.00	3360	220.00	3399	220.00	3442	180.00
3229	50.00	3273	425.00	3317	275.00	3361	190.00	3400	20.00	3443	120.00
3230	1,100.00	3274	130.00	3318	900.00	3362	200.00	3401	150.00	3444	375.00
3231	525.00	3275	1,700.00	3319	75.00	3363	190.00	3402	90.00	3445	150.00
3232	160.00	3276	425.00	3320	625.00	3364	275.00	3403	90.00	3446	300.00
3233	700.00	3278	180.00	3321	75.00	3365	100.00	3404	85.00	3447	475.00
3234	275.00	3279	300.00	3322	80.00	3366	130.00	3405	40.00	3448	210.00

All prices in USD

AUCTIONEERS OF "FRANKLIN D. ROOSEVELT," "CASPARY,"
"DALE," "HIND" and OTHER MAJOR COLLECTIONS



H. R. HARMER

Global Philatelic Network, Inc.
PHILATELIC AUCTIONEERS

2680 Walnut Ave Suite AB
Tustin, CA 92780-7052
EMAIL: info@hrharmer.com
Phone: 714-389-9178

Sales #3043-46

June 21, 2021 - June 25, 2021

lot	sold	lot	sold	lot	sold	lot	sold	lot	sold	lot	sold
3449	1,500.00	3492	350.00	3532	400.00	3574	90.00	3613	35.00	3658	75.00
3450	75.00	3493	160.00	3533	60.00	3575	140.00	3614	300.00	3659	230.00
3451	210.00	3494	140.00	3534	200.00	3576	35.00	3615	325.00	3660	170.00
3452	250.00	3496	240.00	3535	120.00	3577	45.00	3616	220.00	3661	85.00
3453	200.00	3497	220.00	3536	150.00	3578	35.00	3617	475.00	3662	525.00
3454	160.00	3499	350.00	3537	400.00	3579	130.00	3618	160.00	3663	525.00
3455	65.00	3500	170.00	3538	210.00	3580	75.00	3619	275.00	3664	1,200.00
3456	170.00	3501	50.00	3539	75.00	3581	120.00	3620	45.00	3665	275.00
3457	100.00	3502	30.00	3540	525.00	3583	180.00	3621	35.00	3666	220.00
3458	250.00	3503	160.00	3541	210.00	3584	150.00	3622	160.00	3667	55.00
3459	400.00	3504	100.00	3542	200.00	3585	60.00	3623	250.00	3669	110.00
3461	250.00	3505	40.00	3543	325.00	3586	110.00	3625	120.00	3670	75.00
3462	50.00	3506	30.00	3544	170.00	3587	300.00	3626	180.00	3672	275.00
3463	850.00	3507	110.00	3545	110.00	3588	300.00	3627	160.00	3673	110.00
3464	120.00	3508	50.00	3546	100.00	3589	250.00	3628	275.00	3674	150.00
3467	160.00	3509	160.00	3547	275.00	3590	675.00	3629	1,200.00	3676	130.00
3468	130.00	3510	130.00	3549	210.00	3591	150.00	3630	85.00	3677	120.00
3469	180.00	3511	120.00	3551	90.00	3592	220.00	3631	100.00	3678	200.00
3470	120.00	3512	100.00	3552	90.00	3593	110.00	3632	65.00	3679	350.00
3471	80.00	3513	170.00	3553	500.00	3594	300.00	3633	230.00	3680	1,600.00
3472	300.00	3514	240.00	3554	400.00	3595	200.00	3634	525.00	3681	1,300.00
3474	100.00	3515	70.00	3555	110.00	3596	120.00	3635	200.00	3682	150.00
3475	55.00	3516	130.00	3556	300.00	3597	400.00	3636	425.00	3683	160.00
3476	180.00	3517	140.00	3557	375.00	3598	450.00	3638	75.00	3684	130.00
3478	250.00	3518	300.00	3558	425.00	3599	120.00	3642	950.00	3686	80.00
3479	170.00	3519	130.00	3559	240.00	3600	75.00	3644	300.00	3687	350.00
3480	160.00	3520	95.00	3560	500.00	3601	375.00	3645	350.00	3688	60.00
3481	120.00	3521	75.00	3561	350.00	3602	350.00	3646	950.00	3689	120.00
3482	120.00	3522	300.00	3563	85.00	3603	50.00	3647	60.00	3690	300.00
3483	200.00	3523	240.00	3564	750.00	3604	375.00	3648	100.00	3691	60.00
3484	300.00	3524	95.00	3565	200.00	3605	90.00	3649	110.00	3692	160.00
3485	180.00	3525	300.00	3566	1,600.00	3606	140.00	3650	65.00	3693	130.00
3486	40.00	3526	90.00	3567	210.00	3607	150.00	3652	80.00	3694	140.00
3487	150.00	3527	100.00	3568	65.00	3608	200.00	3653	65.00	3695	400.00
3488	75.00	3528	200.00	3569	50.00	3609	850.00	3654	400.00	3696	180.00
3489	100.00	3529	200.00	3570	100.00	3610	350.00	3655	85.00	3697	120.00
3490	250.00	3530	90.00	3571	75.00	3611	350.00	3656	45.00	3698	180.00
3491	90.00	3531	190.00	3573	170.00	3612	50.00	3657	40.00	3699	150.00

All prices in USD

AUCTIONEERS OF "FRANKLIN D. ROOSEVELT," "CASPARY,"
"DALE," "HIND" and OTHER MAJOR COLLECTIONS



H. R. HARMER

Global Philatelic Network, Inc.

PHILATELIC AUCTIONEERS

2680 Walnut Ave Suite AB
Tustin, CA 92780-7052
EMAIL: info@hrharmer.com
Phone: 714-389-9178

Sales #3043-46

June 21,2021 - June 25,2021

lot	sold	lot	sold	lot	sold	lot	sold	lot	sold	lot	sold
3700	120.00	3744	230.00	3793	130.00	4014	90.00	4067	250.00	4117	80.00
3701	90.00	3745	750.00	3794	375.00	4016	120.00	4068	85.00	4118	85.00
3702	160.00	3746	325.00	3795	85.00	4017	700.00	4069	150.00	4121	500.00
3703	65.00	3747	190.00	3796	170.00	4018	20.00	4070	130.00	4122	230.00
3704	80.00	3748	80.00	3798	110.00	4019	180.00	4071	100.00	4123	325.00
3707	55.00	3749	300.00	3799	75.00	4020	210.00	4072	210.00	4124	90.00
3708	275.00	3751	230.00	3800	35.00	4022	1,000.00	4074	75.00	4125	350.00
3709	75.00	3752	140.00	3802	325.00	4025	50.00	4075	80.00	4126	250.00
3710	650.00	3753	85.00	3803	80.00	4026	130.00	4076	1,200.00	4127	190.00
3711	250.00	3754	275.00	3804	550.00	4027	90.00	4079	800.00	4128	350.00
3712	375.00	3755	180.00	3805	350.00	4028	180.00	4081	850.00	4129	75.00
3714	85.00	3756	100.00	3806	2,100.00	4029	80.00	4082	190.00	4130	230.00
3715	100.00	3757	375.00	3808	325.00	4030	220.00	4084	350.00	4131	150.00
3717	150.00	3758	100.00	3809	75.00	4031	130.00	4085	75.00	4132	450.00
3719	200.00	3759	240.00	3810	100.00	4032	1,000.00	4087	230.00	4133	275.00
3720	120.00	3760	300.00	3811	200.00	4033	200.00	4089	200.00	4134	130.00
3721	100.00	3761	200.00	3813	120.00	4034	325.00	4091	160.00	4135	200.00
3722	120.00	3762	100.00	3814	230.00	4035	180.00	4092	160.00	4136	190.00
3723	160.00	3763	300.00	3815	160.00	4036	110.00	4093	80.00	4137	130.00
3724	120.00	3764	220.00	3816	120.00	4037	275.00	4094	30.00	4138	130.00
3726	65.00	3765	275.00	3817	375.00	4038	525.00	4095	10.00	4139	210.00
3727	55.00	3766	300.00	3818	110.00	4039	130.00	4096	10.00	4140	130.00
3728	85.00	3767	800.00	3819	1,100.00	4040	550.00	4097	180.00	4141	75.00
3729	525.00	3768	45.00	3820	140.00	4041	5,500.00	4099	200.00	4142	160.00
3730	250.00	3769	45.00	3821	140.00	4042	85.00	4100	140.00	4143	130.00
3731	80.00	3770	85.00	3822	170.00	4043	75.00	4101	140.00	4144	400.00
3732	70.00	3771	100.00	3823	325.00	4044	2,200.00	4102	20.00	4145	650.00
3733	160.00	3772	100.00	3824	30.00	4047	625.00	4103	240.00	4146	500.00
3734	150.00	3773	625.00	3858	150.00	4048	1,200.00	4104	75.00	4147	130.00
3735	190.00	3774	3,500.00	4001	325.00	4052	525.00	4105	200.00	4148	230.00
3736	600.00	3785	3,000.00	4002	200.00	4054	70.00	4106	65.00	4149	160.00
3737	50.00	3786	625.00	4003	100.00	4055	400.00	4108	250.00	4150	130.00
3738	120.00	3787	425.00	4004	150.00	4056	50.00	4111	140.00	4151	450.00
3739	350.00	3788	725.00	4007	75.00	4058	500.00	4112	240.00	4152	300.00
3740	425.00	3789	75.00	4008	75.00	4060	70.00	4113	65.00	4153	450.00
3741	150.00	3790	300.00	4010	250.00	4063	250.00	4114	130.00	4154	130.00
3742	210.00	3791	100.00	4011	200.00	4064	500.00	4115	65.00	4155	250.00
3743	230.00	3792	425.00	4012	60.00	4065	130.00	4116	190.00	4156	350.00

All prices in USD

AUCTIONEERS OF "FRANKLIN D. ROOSEVELT," "CASPARY,"
"DALE," "HIND" and OTHER MAJOR COLLECTIONS



H. R. HARMER

Global Philatelic Network, Inc.

PHILATELIC AUCTIONEERS

2680 Walnut Ave Suite AB
Tustin, CA 92780-7052
EMAIL: info@hrharmer.com
Phone: 714-389-9178

Sales #3043-46

June 21,2021 - June 25,2021

lot	sold	lot	sold	lot	sold	lot	sold	lot	sold	lot	sold
4157	210.00	4195	130.00	4233	75.00	4286	300.00	4340	80.00	4397	70.00
4158	140.00	4196	1,200.00	4234	130.00	4288	180.00	4341	2,000.00	4398	160.00
4159	130.00	4197	130.00	4235	140.00	4289	200.00	4342	150.00	4401	625.00
4160	240.00	4198	130.00	4236	170.00	4290	210.00	4343	75.00	4403	40.00
4161	95.00	4199	130.00	4237	200.00	4291	180.00	4344	40.00	4405	50.00
4162	75.00	4200	130.00	4238	160.00	4293	180.00	4345	150.00	4409	575.00
4163	150.00	4201	130.00	4239	150.00	4295	200.00	4346	100.00	4410	150.00
4164	120.00	4202	75.00	4240	210.00	4296	120.00	4347	100.00	4411	100.00
4165	130.00	4203	150.00	4241	130.00	4298	200.00	4349	80.00	4412	130.00
4166	325.00	4204	170.00	4242	200.00	4301	130.00	4350	50.00	4413	160.00
4167	400.00	4205	190.00	4243	180.00	4302	450.00	4351	120.00	4414	240.00
4168	210.00	4206	130.00	4244	160.00	4305	120.00	4356	180.00	4415	120.00
4169	130.00	4207	130.00	4245	190.00	4307	950.00	4357	190.00	4416	240.00
4170	130.00	4208	75.00	4246	130.00	4308	200.00	4358	325.00	4417	130.00
4171	350.00	4209	130.00	4247	90.00	4309	100.00	4359	120.00	4418	100.00
4172	275.00	4210	130.00	4248	200.00	4310	160.00	4360	180.00	4419	160.00
4173	75.00	4211	130.00	4249	250.00	4313	90.00	4364	15.00	4420	100.00
4174	160.00	4212	140.00	4250	230.00	4314	50.00	4367	40.00	4421	100.00
4175	130.00	4213	140.00	4251	30.00	4315	95.00	4368	150.00	4422	150.00
4176	275.00	4214	95.00	4252	210.00	4316	275.00	4370	1,600.00	4423	150.00
4177	210.00	4215	75.00	4253	100.00	4317	300.00	4371	120.00	4424	130.00
4178	300.00	4216	170.00	4254	75.00	4319	200.00	4372	250.00	4426	75.00
4179	75.00	4217	200.00	4255	75.00	4320	200.00	4373	600.00	4427	275.00
4180	130.00	4218	170.00	4258	75.00	4321	1,000.00	4376	150.00	4428	180.00
4181	130.00	4219	130.00	4259	180.00	4322	40.00	4377	2,500.00	4429	110.00
4182	130.00	4220	160.00	4267	10.00	4323	50.00	4378	1,500.00	4430	150.00
4183	130.00	4221	130.00	4268	60.00	4324	425.00	4379	200.00	4431	100.00
4184	1,000.00	4222	160.00	4270	75.00	4325	120.00	4380	700.00	4432	95.00
4185	220.00	4223	325.00	4272	75.00	4326	230.00	4382	2,000.00	4433	170.00
4186	180.00	4224	130.00	4273	170.00	4327	475.00	4383	100.00	4434	250.00
4187	130.00	4225	130.00	4274	85.00	4328	2,200.00	4385	350.00	4435	50.00
4188	170.00	4226	150.00	4275	130.00	4329	170.00	4388	100.00	4437	400.00
4189	950.00	4227	75.00	4277	130.00	4330	110.00	4391	20.00	4439	100.00
4190	130.00	4228	170.00	4279	85.00	4335	1,200.00	4392	25.00	4447	550.00
4191	130.00	4229	150.00	4280	190.00	4336	1,400.00	4393	675.00	4448	50.00
4192	130.00	4230	75.00	4281	90.00	4337	1,200.00	4394	275.00	4449	75.00
4193	220.00	4231	250.00	4282	150.00	4338	110.00	4395	160.00	4450	575.00
4194	130.00	4232	75.00	4285	120.00	4339	525.00	4396	150.00	4451	3,000.00

All prices in USD

AUCTIONEERS OF "FRANKLIN D. ROOSEVELT," "CASPARY,"
"DALE," "HIND" and OTHER MAJOR COLLECTIONS



H. R. HARMER

Global Philatelic Network, Inc.
PHILATELIC AUCTIONEERS

2680 Walnut Ave Suite AB
Tustin, CA 92780-7052
EMAIL: info@hrharmer.com
Phone: 714-389-9178

Sales #3043-46

June 21,2021 - June 25,2021

lot	sold	lot	sold	lot	sold
4452	200.00	4520	350.00	4558	120.00
4453	150.00	4521	475.00	4559	170.00
4454	600.00	4522	130.00	4560	200.00
4460	110.00	4523	1,600.00	4561	120.00
4461	240.00	4524	1,400.00	4562	50.00
4462	160.00	4525	850.00	4563	90.00
4463	160.00	4526	850.00	4564	75.00
4464	160.00	4527	300.00	4565	240.00
4465	120.00	4528	250.00	4566	95.00
4467	80.00	4529	240.00	4567	525.00
4468	75.00	4530	240.00	4568	1,200.00
4469	75.00	4531	230.00	4569	800.00
4470	35.00	4532	180.00	4572	170.00
4471	60.00	4533	350.00	4574	750.00
4475	180.00	4534	425.00	4575	450.00
4476	35.00	4535	230.00	4576	210.00
4477	120.00	4536	500.00	4577	625.00
4478	50.00	4537	800.00	4578	85.00
4479	500.00	4538	675.00	4579	1,100.00
4501	22,000.00	4539	675.00	4580	500.00
4502	2,400.00	4540	325.00	4581	800.00
4503	3,500.00	4541	400.00	4582	300.00
4504	2,400.00	4542	200.00	4583	550.00
4505	3,250.00	4543	200.00	4584	110.00
4506	3,500.00	4544	150.00	4585	50.00
4507	375.00	4545	250.00	4587	475.00
4508	475.00	4546	210.00		
4509	450.00	4547	3,750.00		
4510	700.00	4548	120.00		
4511	120.00	4549	150.00		
4512	275.00	4550	75.00		
4513	210.00	4551	400.00		
4514	190.00	4552	230.00		
4515	325.00	4553	130.00		
4516	240.00	4554	50.00		
4517	500.00	4555	90.00		
4518	500.00	4556	17,000.00		
4519	500.00	4557	575.00		

All prices in USD

AUCTIONEERS OF "FRANKLIN D. ROOSEVELT," "CASPARY,"
"DALE," "HIND" and OTHER MAJOR COLLECTIONS