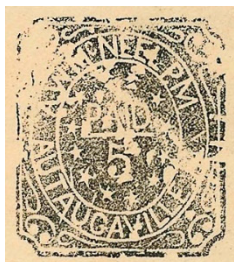


# Census of Autaugaville, Alabama, Postmasters' Provisionals

Compiled by Francis J. Crown, Jr.

## Description



**AUT-AL-E01**



**AUT-AL-E02**

### The Autaugaville provisionals

There are two different types of the Autaugaville provisional marking, both apparently made of brass. The first is an imitation of either the Athens, Georgia, Knoxville, Tennessee or Nashville, Tennessee 5-cent provisionals. The second is quite different with a plain circle with "A W McNeel / PM (the postmaster) around the inside of the circle and a star in the center. The star has a "5" in the center and "P", "A", "I", and "D" in the points of the star.

The son of the postmaster claimed a 10-cent die was also made. However, no examples of this marking are recorded.

For further information on the Autaugaville provisionals see References in Notes.

**NOTE:** The inclusion of an item in this census is not a guarantee of authenticity.

### Count of Autaugaville provisionals

Provisional	CSA Cat No	Scott Cat No	Covers
5c black	AUT-AL-E01	10XU1	4
5c black	AUT-AL-E02	10XU2	1

## Notes

### Fakes

The die that looks like a stamp survived the war and impressions were made on envelopes and pieces of paper. An example is illustrated below.



The Autaugaville die was impressed on this prewar use from the town. Courtesy Civil War Philatelic Authentication Service.

### References

August Dietz, "The Autaugaville, Ala. Stamps," *Stamps* 56:8 (24 August 1946), pp. 294-296.

Howard Lehman, "The Autaugaville, Alabama Stamps," *The Stamp Specialist*, Yellow Book (1942), 49-52.

### Mini Census of Autaugaville, Alabama, Provisionals

<u>Pmk Date</u>	<u>Address</u>	<u>PmkPos</u>	<u>PrvPos</u>	<u>CN</u>
<b>5c black -- AUT-AL-E01 (10XU1)</b>				
21 Nov [1861]	Mr. Willis. Todd / Benton / Ala	UL	CR	005
27 Nov [1861]	J. Hodges. Golsan Esqr. / Montgomery / Ala.	UC-UR	UR	002
28 Nov [1861]	Elder H. Talbird / Marion / Alabama	UL	UR	001
10 Jan [1862]	None	UL	UR	004
<b>5c black -- AUT-AL-E02 (10XU2)</b>				
8 Oct [1861]	Dr. P. N. Cilley / Lowndesboro / Ala	UL	UR	003

## Full Census of Autaugaville, Alabama, Provisionals

Compiled by Francis J. Crown, Jr.

### 5c black -- AUT-AL-E01 (10XU1)

21 Nov [1861]

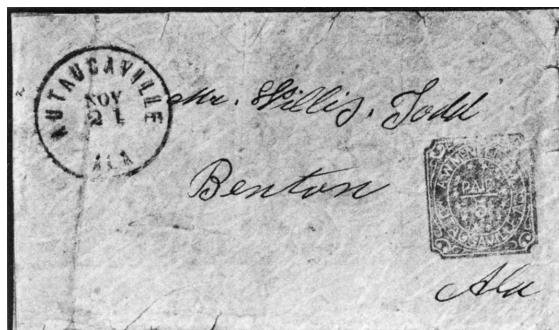
**Description:** "AUTAUGAVILLE / ALA" postmark UL, provisional marking CR. Cover crease through postmark.

**Address:** Mr. Willis. Todd / Benton / Ala

**Provenance:** Hessel.

**Source:** PF-52672; HRH-21Oct1975-139. [005]

**Image Credit:** H R Harmer Auctions



27 Nov [1861]

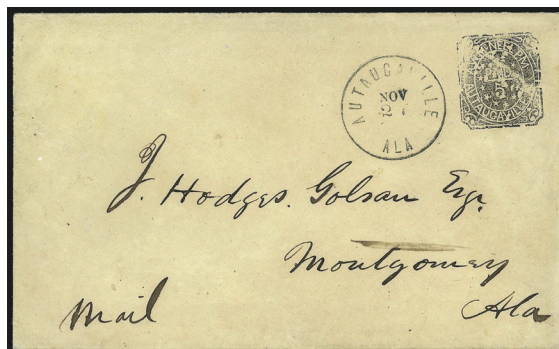
**Description:** Black "AUTAUGAVILLE / ALA" postmark UC-UR, provisional marking UR. Docketed "Mail" at LL.

**Address:** J. Hodges. Golsan Esqr. / Montgomery / Ala.

**Provenance:** Haas, Dr Green, Gross.

**Source:** PF-108709; STSP-1942(Yellow Book)-52; RCF-22Feb1986(27)-143\*; RAS-12Apr2000(822)-60\*; SPK-19Nov2009-6\*. [002]

**Image Credit:** Robert A Siegel Auctions



28 Nov [1861]

**Description:** Black "AUTAUGAVILLE / ALA" postmark UL, provisional marking UR.

**Address:** Elder H. Talbird / Marion / Alabama

**Provenance:** Carnahan, Brandon.

**Source:** PF-25731; SPB-9Mar1978-2012; RAS-24Jun2014(1073)-211\*. [001]

**Image Credit:** Robert A Siegel Auctions



10 Jan [1862]

**Description:** "AUTAUGAVILLE / ALA" postmark UL, provisional marking UR. Upper part of cover only.

**Address:** None

**Provenance:** Walcott, Lilly.

**Source:** PF-25732; RL-23 May 1935 -13; RAS-27Apr19678(317)-277. [004]

**Image Credit:** Philatelic Foundation



## 5c black -- AUT-AL-E02 (10XU2)

8 Oct [1861]

**Description:** Black "AUTAUGAVILLE / ALA" postmark UL, provisional marking UR. Docketed "box B" at UR. Cover has been cleaned.

**Address:** Dr. P. N. Cilley / Lowndesboro / Ala

**Provenance:** Caspary, Lilly, Gallagher, Agre.

**Source:** HRH-5Mar1956-31; RAS-27Apr1967(317)-278; RAS-9Jun1998(801)-347\*; RAS-25Sep2002(850)-5665; RAS-9Sep2020(1225)-65\*. [003]

**Image Credit:** Robert A Siegel Auctions

