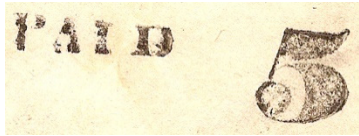


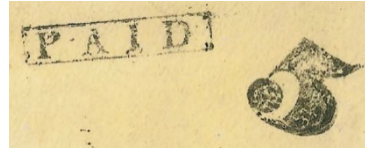
Census of Laurens C H, South Carolina, Postmaster's Provisionals

Compiled by Francis J. Crown, Jr.

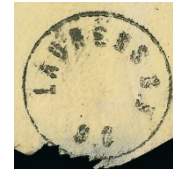
Description



LAU-SC-E01



LAU-SC-E02



Control

The Laurens C H, Provisionals

The Laurens C H provisionals were prepared by handstamping envelopes with either of two types of PAID markings and a numeral "5". An older undated postmark was struck on the reverse of the envelopes as a control.

The same markings were used on stampless covers. A provisional must have the control on the reverse.

The same handstamped markings were used as stampless markings. The only difference is the control marking on the reverse of provisionals covers.

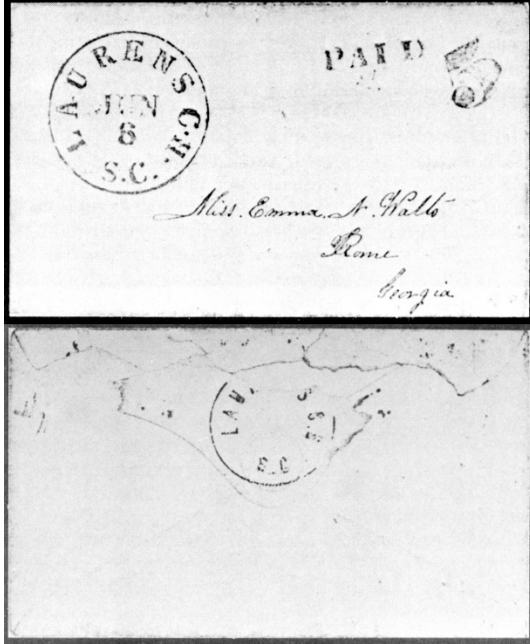
NOTE: The inclusion of an item in this census is not a guarantee of authenticity.

Count of the Laurens CH, South Carolina, provisionals

Provisional	CSA Cat No	Scott Cat No	Covers
5c black (plain PAID) w/control	LAU-SC-E01	116XU2	3
5c black (boxed PAID) w/control	LAU-SC-E02	116XU1	2

Notes

Laurens provisional covers showing the control marking



LAU-SC-E01
8 Jun 1861 (CN-002)



LAU-SC-E01
12 Jun 1861 (CN-001)



LAU-SC-E02
4 Jul 1861 (CN-003)



LAU-SC-E02
9 Dec 1861 (CN-005)

Mini Census of Laurens C H, South Carolina, Provisionals

<u>Pmk Date</u>	<u>Address</u>	<u>PmkPos</u>	<u>PrvPos</u>	<u>CN</u>
5c black with plain "PAID" and control on reverse -- LAU-SC-E01 (116XU2)				
8 Jun [1861]	Miss. Emma N. Watts / Rome / Georgia	UL	UC-UR	002
12 Jun [1861]	Capt Bozaman [Bozeman] / of the Bozaman [Bozeman] Guards / Plain P. O. / Greenville Dist / S. C.	UL	UC-UR	001
28 Jun [1861]	Henry Summer Esqr / Newbery C. H. / So. Ca	UL	UC-UR	004
5c black with boxed "PAID" and control on reverse -- LAU-SC-E02 (116XU1)				
4 Jul [1861]	Mr William A. Chunn / Cassville / Geo	UL	UC-UR	003
9 Dec [1861]	Miss Hattie R. Palmer / Echaw [LO] / Pineville [in light pencil] / Charleston District / S. C.	UL	UC-UR	005

Full Census of Laurens C H, South Carolina, Provisionals

Compiled by Francis J. Crown, Jr.

5c black with plain "PAID" and control on reverse -- LAU-SC-E01 (116XU2)

8 Jun [1861]

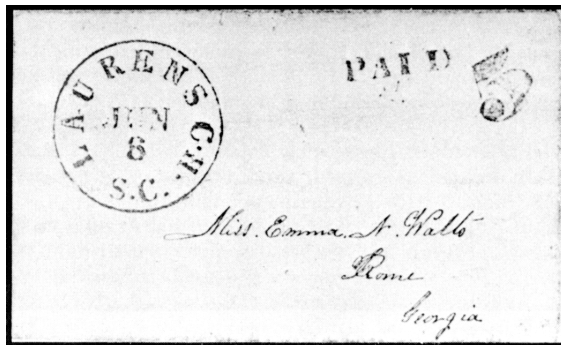
Description: "LAURENS C. H. / S. C." postmark UL, provisional marking UC-UR. Control on reverse

Address: Miss. Emma N. Watts / Rome / Georgia

Provenance: None recorded.

Source: CONP-Nov/Dec1973(18:6)-169. [002]

Image Credit: Confederate Philatelist.



12 Jun [1861]

Description: Black "LAURENS C. H. / S. C." postmark UL, provisional marking UC-UR. Black control on reverse.

Address: Capt Bozaman [Bozeman] / of the Bozaman [Bozeman] Guards / Plain P. O. / Greenville Dist / S. C.

Provenance: None recorded.

Source: Private collection. [001]

Image Credit: Private.



28 Jun [1861]

Description: Black "LAURENS C. H. / S. C." postmark UL, provisional marking UC-UR. Control on reverse.

Address: Henry Summer Esqr / Newbery C. H. / So. Ca

Provenance: None reported.

Source: CHR-13Oct1989-1150; RAS-15Dec2016(1146)-1604*. [004]

Image Credit: Robert A Siegel Auctions.



5c black with boxed "PAID" and control on reverse -- LAU-SC-E02 (116XU1)

4 Jul [1861]

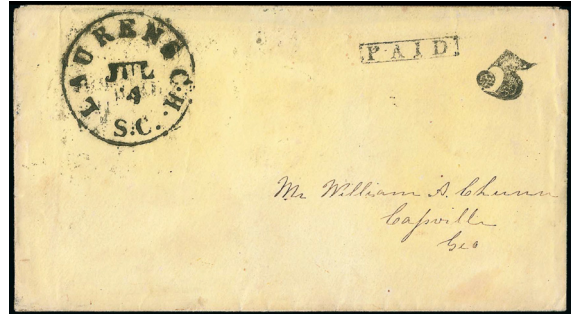
Description: Black "LAURENS C. H. / S. C." postmark UL, provisional marking UC-UR. Black control on reverse.

Address: Mr William A. Chunn / Cassville / Geo

Provenance: Brandon.

Source: CWPAS-00546; PF-541395*; CHR-13Oct1989-1150; RAS-24Jun2014(1073)-275*; RAS-9Nov2016(1139)-166*. [003]

Image Credit: Philatelic Foundation.



9 Dec [1861]

Description: Black "LAURENS C. H. / S. C." postmark UL, provisional marking UC-UR. Black control on reverse. Address apparently changed before mailing.

Address: Miss Hattie R. Palmer / Echaw [LO] / Pineville [in light pencil] / Charleston District / S. C.

Provenance: None recorded.

Source: PF-129333; RAS-22Jun2016(1132)-3128*. [005]

Image Credit: Robert A Siegel Auctions.

