

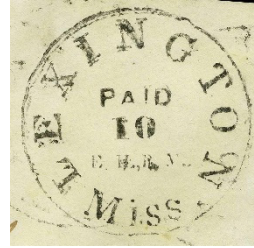
# Census of Lexington, Mississippi Postmasters' Provisionals

Complied by Francis J. Crown, Jr.

## Description



LEX-MS-E01



LEX-MS-E02

## The Lexington Provisionals

The Lexington provisionals were prepared by handstamping envelopes with the office postmark in which the date logos were replaced with "PAID," "5," or "10" rate markings and the initials "E. H. P. M." The first two initials stood for the name of the postmaster, Erastus Haskins. The last two initials stood for "Post Master."

**NOTE:** The inclusion of an item in this census is not a guarantee of authenticity.

## Count of Lexington provisionals

Provisional	CSA Cat No	Scott Cat No	Covers
5c black	LEX-MS-E01	50XU1	4
5c black – used in combination with a general issue	LEX-MS-E01a	50XU1	1
10c black – general issue used over provisional	LEX-MS-E02a	50XU2	1

## Notes

### General Issue Used Over or Added?



The actual use represented by the left side of the cover above (CN-006) is debatable. The two images show the provisional marking and the stamp on the cover.

This cover has been described as a 5c stamp added to make up the 10c rate in October 1862. This theory is acceptable because the right side of the stamp appears to be tied by portions of at least one letter of a postmark. The October 1862 docketing on the cover would also fit the 10 cent rate of the period.

However, there is evidence a stamp was actually over the provisional when cancelled. The black and white image, above right, shows a dark shadow over the central part of the provisional marking. Further the left portion of the postmark containing the "O" to the right of the "TO" in the provisional marking is missing indicating a major part of the postmark cancelled a stamp over the provisional marking. This suggests a second stamp was originally over the provisional and subsequently removed leaving only the stamp at bottom. This theory would mean 10c postage was paid two five cent stamps (the provisional not being valid for postage) when mailed. The date of use would be in October 1862 as indicated by the docketing.

## History

The earliest mention found of the Lexington provisional is a note by Charles J. Phillips that about 1896 "Messrs. Burger Bros. got a cover addressed to Col. Duncan, Jackson, Miss." In early 1900 the *Weekly Philatelic Era* carried two short items that stated, Mr. Stone, a well-known stamp dealer of Concord, N. H. discovered a Lexington provisional cover. An accompanying illustration (see below) shows it was the same cover noted by Phillips.



**The original find of the Lexington provisional postmarked 3 Oct [1861]. This cover is CN-002 in the census. Reprinted from *The Weekly Philatelic Era*, 13 January 1900.**

## References

S. E. L., "Boston Letter," *Weekly Philatelic Era* 14:15 (6 January 1900):128.

W. W. Jewett, ed., No Title, *Weekly Philatelic Era* 14:16 (13 January 1900):131.

Charles J. Phillips, "Lexington, Mississippi," in *Surveys of the Confederate Postmasters' Provisionals* (Lawrence, MA: Quarterman Publications, 1982), 179

### Mini Census of Lexington, Mississippi, Provisionals

<u>Pmk Date</u>	<u>Address</u>	<u>PmkPos</u>	<u>PrvPos</u>	<u>CN</u>
<b>5c black -- LEX-MS-E01 (50XUX1)</b>				
2 Sep [1861]	Brig Genl. A. M. West / Care of W R Sprouly / Durant / Missi	UL	UR	001
3 Oct [1861]	Miss. M. E. Godden / Care Rev. J. C. Kung, / Jackson, Miss.	UL	UR	002
23 Dec [1861]	Messrs Carroll Hoy & Co / New Orleans / La.	UL	UR	003
13 [--- 186-]	Messrs Carroll Hoy & Co / New Orleans / La.	UL	UR	004
<b>5c black, general issue used over -- LEX-MS-E01a</b>				
[-- --- 1862]	Col. John Duncan, / Jackson / Miss	CR	UR	006
<b>10c black, general issue used over -- LEX-MS-E02a</b>				
[-- --- 186-]	Asa M. Jackson / Watkins Ville / Ga	UR	UR	005

## Full Census of Lexington, Mississippi, Provisionals

Compiled by Francis J. Crown, Jr.

### 5c black -- LEX-MS-E01 (50XUX1)

2 Sep [1861]

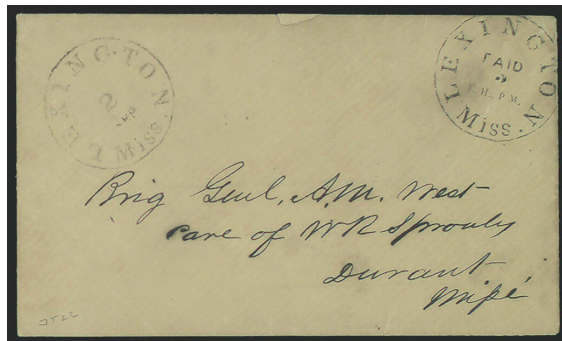
**Description:** Black "LEXINGTON / MISS." postmark UL, provisional marking UR.

**Address:** Brig Genl. A. M. West / Care of W R Sprouly / Durant / Missi

**Provenance:** Agre.

**Source:** CWPAS-03060; RAS-9Apr1997(787)-3232\*; RAS-25Sep2002(850)-5732. [001]

**Image Credit:** Robert A. Siegel Auctions.



3 Oct [1861]

**Description:** Black "LEXINGTON / MISS." postmark UL, provisional marking UR. Cover repaired above postmark, along bottom, and at UR corner.

**Address:** Miss. M. E. Godden / Care Rev. J. C. Kung, / Jackson, Miss.

**Provenance:** Walcott, Beverly Hills, Agre.

**Source:** CWPAS-04339\*; WPER-13Jan1900-131; RL-23 May 1923-79; RAS-20Apr1985(645)-396\*; JWK-20Feb1986-34; RAS-25Sep2002(850)-5733. [002]

**Image Credit:** Civil War Philatelic Society Authentication Service.





23 Dec [1861]

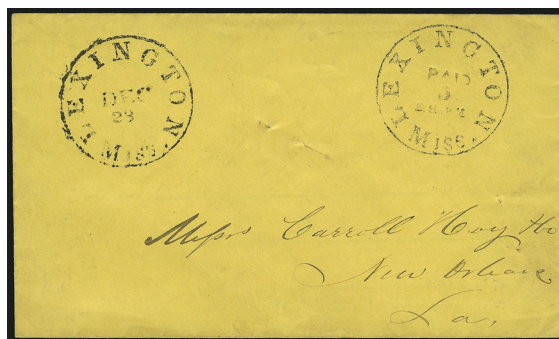
**Description:** Black "LEXINGTON / MISS." postmark UL, provisional marking UR. Filing pin holes at center of cover.

**Address:** Messrs Carroll Hoy & Co / New Orleans / La.

**Provenance:** Hall.

**Source:** RAS-12Dec2001(840)-64\*; RAS-24Jun2015(1104)-2150\*. [003]

**Image Credit:** Robert A. Siegel Auctions.



13 [--- 186-]

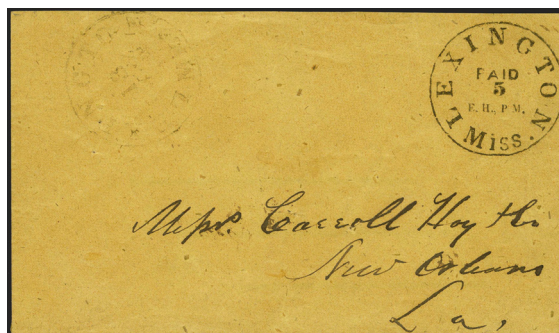
**Description:** "LEXINGTON / MISS." postmark UL, provisional marking UR. Postmark is faint.

**Address:** Messrs Carroll Hoy & Co / New Orleans / La.

**Provenance:** Brooks, Kimmel, Hill, Erivan.

**Source:** PF-56396; RAS-18May1976(492)-599; CSX-(Aug1996-19); L&S-24Apr1943(123)-85; HRH-7Aug2020(3035)-73\*. [004]

**Image Credit:** H. R. Harmer Auctions.



### 5c black, general issue used over -- LEX-MS-E01a

[-- --- 1862]

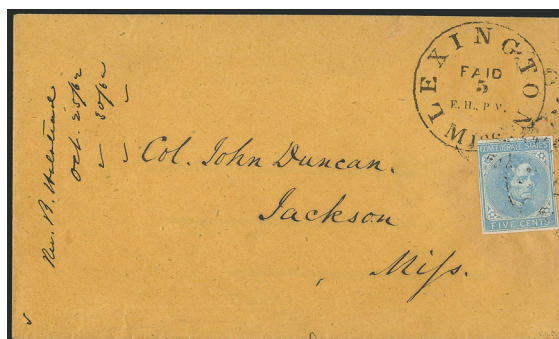
**Description:** Black "LEXINGTON / MISS." postmark CR, provisional marking UR. General issue used over provisional marking. Cover is docketed "Oct 25/62." See Notes.

**Address:** Col. John Duncan, / Jackson / Miss

**Provenance:** Caspary, Brandon, Ryterband.

**Source:** CWPAS-00436; PF-521912\*; CWPSX-Ryterband(Jan2020)-30\*; HRH-5Mar1956-182; RAS-24Jun2014(1073)-277\*. [006]

**Image Credit:** Robert A. Siegel Auctions.



10c black, general issue used over -- LEX-MS-E02a

[-- --- 186-]

**Description:** "LEXINGTON / MISS." postmark UR, provisional marking UR. Only the letters on the left side of the weak postmark are visible indicating a stamp was used over the provisional marking.

**Address:** Asa M. Jackson / Watkins Ville / Ga

**Provenance:** Hill, Erivan.

**Source:** DIXP-Spring1984-8; CSX-Aug1996-19; HRH-7Aug2020(3035)-005\*. [005]

**Image Credit:** H. R. Harmer Auctions.

