

# Census of Ringgold, Georgia Postmaster's Provisionals

Compiled by Francis J. Crown, Jr.

## Description



RIN-GA-E01

### The Ringgold provisional marking

The Ringgold provisional marking is neither a postmark nor a simple handstamped paid marking. It appears to have been specifically prepared for the purpose of handstamping provisional envelopes.

The design consists of three concentric circles. The outer ring contains the words, "C S. POSTAGE" at the top, and "FIVE CENTS" at the bottom. These are separated by a set of six small stars on each side. The second ring contains the town name, "RINGGOLD / GEORGIA" in an italic font. The inner circle contains some sort of ornament. The crudeness of the letters in "RINGGOLD" suggests the marking was a hand engraved woodcut.

**NOTE:** The inclusion of an item in this census is not a guarantee of authenticity.

## Count of Ringgold provisionals

Provisional	CSA Cat No	Scott Cat No	Cut Square Unused	Cut Square Used	Covers	Total
5c blue black	RIN-GA-E01	71XU1	1	3	4	8
5c blue black used with General Issues	RIN-GA-E01x				1	1

## Notes

### A Mystery

There is an interesting article in the *American Journal of Philately* for 31 October 1894, pages 40-50. The article states that the editor, Henry L. Calman, received a copy of the Ringgold provisional marking “impressed on a torn half of a letter head [letter sheet]” that had no other postal markings. This raises two questions. Did the other half of the letter sheet have a postmark, or was this an example of a letter sheet being handstamped as a provisional for later use on a folded letter? Since the letter sheet only had the impression of a Ringgold provisional marking, is this the unused cut square in this census (CN-009)?

### Mini Census of Ringold, Georgia, Provisionals

<u>Pmk Date</u>	<u>Address</u>	<u>PmkPos</u>	<u>PrvPos</u>	<u>CN</u>
<b>5c blue-black, cut square unused -- RIN-GA-E01 (71XU1)</b>				
Unused	NA			009
<b>5c blue-black, cut square used -- RIN-GA-E01 (71XU1)</b>				
11 Sep [1861]	NA			004
22 Jan [1862]	NA			007
4 Feb [1862]	NA			008
<b>5c blue-black -- RIN-GA-E01 (71XU1)</b>				
15 Aug [1861]	Messers Edmond & Nelson Murphey / Grocery House / Broad Way St / Augusta Ga	UL-UC	UR	001
30 Aug [1861]	John Taylor Esq. / Summerville / Georg	UL	UR	002
7 Sep [1861]	Mrs. Mar. A. Simpson. / Hamilton / Geo.	UL	UR	003
24 Oct [1861]	Mrs Mary. A. Simpson / Hamilton / Geo	CR	UR	005
<b>5c blue-black, with General Issue -- RIN-GA-E01x (71XU1)</b>				
20 Jan [186-]	Messrs R J Lowry & Co / Atlanta / Georgia	UL	UR	006

## Full Census of Ringgold, Georgia, Provisionals

Compiled by Francis J. Crown, Jr.

### 5c blue-black, cut square unused -- RIN-GA-E01 (71XU1)

#### Unused

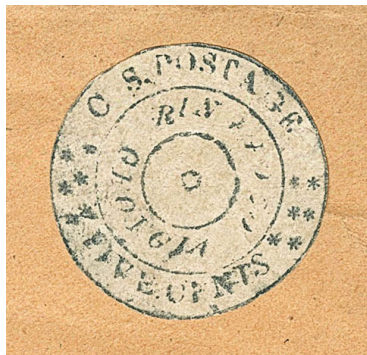
**Description:** Provisional marking cut to shape and attached to piece of non-contemporary paper.

**Address:** NA

**Provenance:** None recorded.

**Source:** RAS-22June2016(1132)-3205\*. [009]

**Image Credit:** Robert A Siegel Auctions.



### 5c blue-black, cut square used -- RIN-GA-E01 (71XU1)

#### 11 Sep [1861]

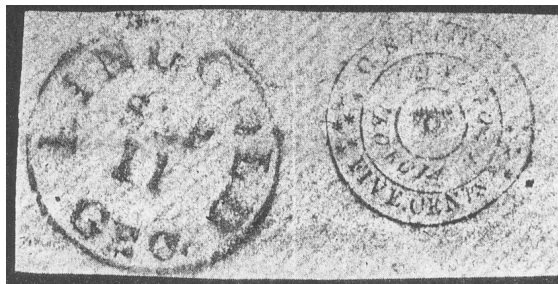
**Description:** "RINGGOLD / GEO." postmark to left of provisional marking on piece.

**Address:** NA

**Provenance:** Hind, Hill.

**Source:** CSX-Hill(Aug1996)-56; PKA-20Nov1933(1)-1578; RAS-11Dec1995(772)-3131. [004]

**Image Credit:** Robert A Siegel Auctions.



#### 22 Jan [1862]

**Description:** Blue-black "RINGGOLD / GEO." postmark cancels provisional marking on piece.

**Address:** NA

**Provenance:** None recorded.

**Source:** PF-127575; RAS-27Jun2016(1132)-3204\*. [007]

**Image Credit:** Robert A Siegel Auctions.



**4 Feb [1862]**

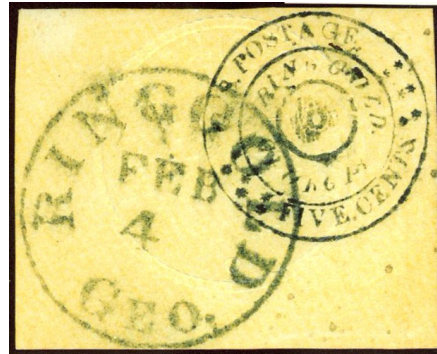
**Description:** Blue-black "RINGGOLD / GEO." postmark cancels provisional marking on piece.

**Address:** NA

**Provenance:** None recorded.

**Source:** PF-164658\*; RAS-10Jul1986(668)-516. [008]

**Image Credit:** Philatelic Foundation.



### 5c blue-black -- RIN-GA-E01 (71XU1)

**15 Aug [1861]**

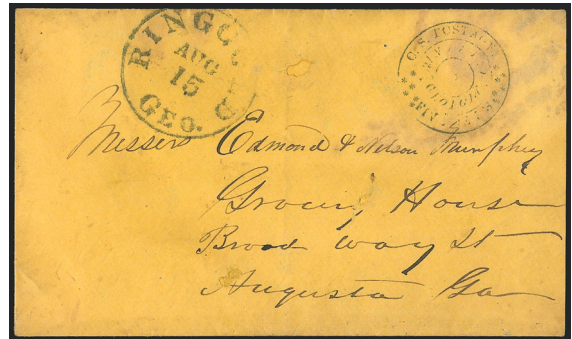
**Description:** Black "RINGGOLD / GEO." postmark UL-UC, provisional marking UR. Several small erosion holes in cover. Some staining in area of provisional marking.

**Address:** Messers Edmond & Nelson Murphey / Grocery House / Broad Way St / Augusta Ga

**Provenance:** Meroni, Kimmel, Brandon, Weinberg.

**Source:** JAF-20Mar1961-192; RAS-18May1976(492); RAS-24Jun2014(1073)-332\*; RAS-9Nov2016(1139)-169\*. [001]

**Image Credit:** Robert A Siegel Auctions.



**30 Aug [1861]**

**Description:** Blue-black "RINGGOLD / GEO." postmark UL, provisional marking UR. Left side of cover professionally restored including part of postmark. Docketed "Box 42" at UC.

**Address:** John Taylor Esq. / Summerville / Georg

**Provenance:** Brooks.

**Source:** RFA-14Dec1893(17)-924; LSA-24Apr1943(123)-144; HRH-18Feb1963-1371; RAS-24Jun2015(1104)-2278\*; RAS-31May2016(1129)-516\*; RAS-15Dec2016(1146)-1626. [002]

**Image Credit:** Robert A Siegel Auctions.



**7 Sep [1861]**

**Description:** Blue-black "RINGGOLD / GEO." postmark UL, provisional marking UR. Folded letter.

**Address:** Mrs. Mar. A. Simpson. / Hamilton / Geo.

**Provenance:** Agre.

**Source:** RAS-9Jun1998(801)-396\*; RAS-25Sep2002(850)-5779\*. [003]

**Image Credit:** Robert A Siegel Auctions.



**24 Oct [1861]**

**Description:** Black "RINGGOLD / GEO." postmark CR, provisional marking UR.

**Address:** Mrs Mary. A. Simpson / Hamilton / Geo

**Provenance:** Caspary, Ballard, Doma.

**Source:** PF-477516\*; HRH-5Mar1956-443; SR-24Apr2009(34)-2684\*; RCF5-27Nov2018-8029\*. [005]

**Image Credit:** Schuyler Rumsey Auctions.



**5c blue-black, with General Issue -- RIN-GA-E01x (71XU1)**

**20 Jan [186-]**

**Description:** "RINGGOLD / GEO." postmark ties pair of 5c locals UL, provisional marking UR

**Address:** Messrs R J Lowry & Co / Atlanta / Georgia

**Provenance:** Hind, Carnahan, Hill.

**Source:** PF-68565; CSX-Hill(Aug1996)-56; PKA-20Nov1933(1)-1579; SPB-9Mar1978-2095; RAS-10Jul1996(779)-400. [006]

**Image Credit:** Sotheby Parke Bernet Auctions.

