

Census of Madison, Georgia, Postmaster's Provisionals

Compiled by Francis J. Crown, Jr.

Description



MAD-GA-E01

The Madison Provisional

The Madison provisional was prepared by striking a red “PAID” and “5” marking on envelopes.

The same marking was used on stampless covers. Consequently the marking is considered a provisional only when unused, postally used from another town, or under a postally used general issue.

NOTE: The inclusion of an item in this census is not a guarantee of authenticity.

Count of the Madison provisional

Provisional	CSA Cat No	Scott Cat No	Covers
5c red	MAD-GA-E01	136XU1	0
5c red under a postally used general issue	MAD-GA-E01a		1
5c red postally used from another town	MAD-GA-E01b		1

Notes

Reference

Dietz, August (ed). "A Double-"Paid" Georgia and What It Contains." New Southern Philatelist 7:8 (June1931): 261.

Mini Census of Madison, Georgia, Provisionals

<u>Pmk Date</u>	<u>Address</u>	<u>PmkPos</u>	<u>PrvPos</u>	<u>CN</u>
5c red under a postally used general issue MAR-GA-E01a				
24 Nov [1861]	Col B F Ward / Corke P O / Butts Co / Ga	UC	UR	001
5c red postally used from another town -- MAR-GA-E01b				
22Aug1861	Miss Emma Wynn / Shady Dale / Joseph County / [Ga.]	UL	UR	002

Full Census of Madison, Georgia, Provisionals

Compiled by Francis J. Crown, Jr.

5c red under a postally used general issue MAR-GA-E01a

24 Nov [1861]

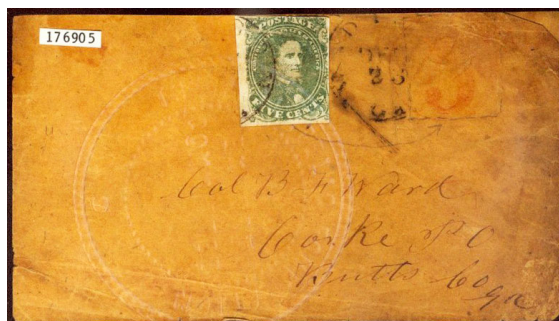
Description: Black "WASHINGTON / Ga." postmark tied 5c green #1 over provisional marking UR. Madison provisional marking is weak.

Address: Col B F Ward / Corke P O / Butts Co / Ga

Provenance: None recorded.

Source: PF-176905*; JWK-14Dec1985-295; RGK-28Mar1987(49)-161. [001]

Image Credit: Philatelic Foundation.



5c red postally used from another town -- MAR-GA-E01b

22Aug1861

Description: Black "WASHINGTON / Ga." postmark UL, provisional marking UR. Madison provisional cover with weak marking used from Washington, GA with "PAID" and "5" markings added.

Address: Miss Emma Wynn / Shady Dale / Joseph County / [Ga.]

Provenance: None recorded.

Source: CWPAS- 01310*; NSOP-Jun31-261; RGK-19Dec1991(75)-392. [002]

Image Credit: Civil War Philatelic Authentication Service.

