

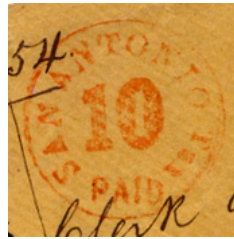
# Census of San Antonio, Texas, Postmaster's Provisionals

Compiled by Francis J. Crown, Jr.

## Description



SAN-TX-E01



SAN-TX-E02



SAN-TEX-E03

## The San Antonio Provisionals

The E01 and E02 San Antonio provisionals were prepared by handstamping envelopes with the office "PAID" postmark and striking "5" or "10" inside for the rate.

The E03 provisional was prepared by handstamping envelopes with a "PAID / 10" marking. This was the same marking used on stampless envelopes. **It is a provisional only when unused, postally used from another town, or under a postally used general issue.**

In the past San Antonio provisionals were not often illustrated in auction catalogs or other reference media. This has resulted in confusion in the identification of the individual 10c values.

There are several wannabe San Antonio provisionals. See "Notes" for more information.

**NOTE:** The inclusion of an item in this census is not a guarantee of authenticity.

## Count of the San Antonio provisionals

Provisional	CSA Cat No	Scott Cat No	Covers
5c black	SAN-TEX-E01	76XU1A	2
10c black*	SAN-TEX-E02	76XU2	0
10c red	SAN-TEX-E02x		1
10c black	SAN-TEX-E03	76XU1	2

\* This is a legacy listing in the CSA Catalog. No example was found during the preparation of this census. The black color may be an error as the marking is known in red.

## Notes

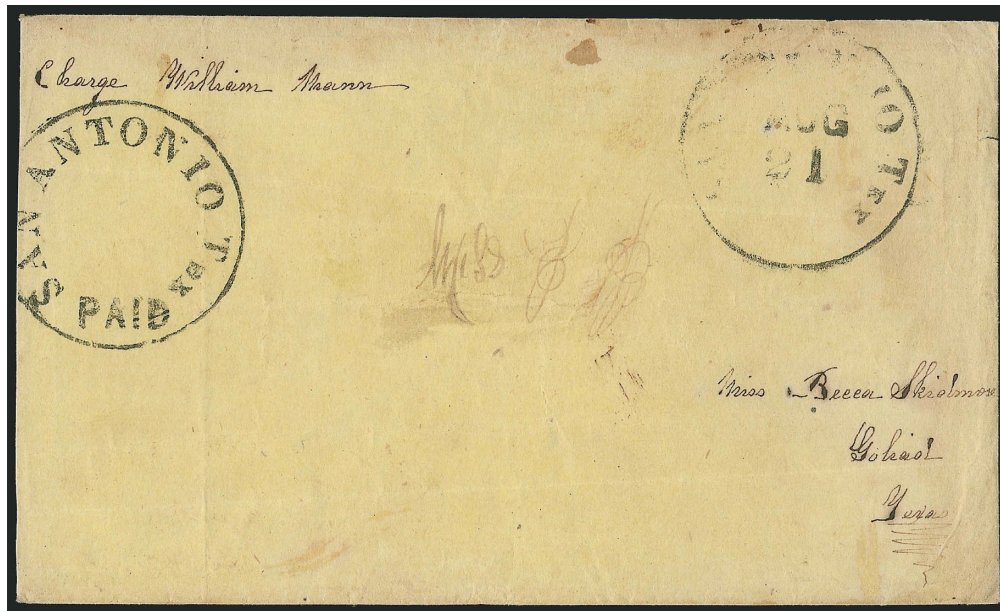
### Problematic Use

The 10 Nov (1861) cover (E02x, 10 Nov [1861], CN-004) is problematic because of the charge box marking at upper center. Such markings may be an indication that the envelope was left at the post office where the correct postage was handstamped and charged to the box number.

### Control Markings

The Dietz Catalogs, New Dietz Catalog, and the Scott Catalogs refer to control markings being used with some the provisional markings (References). No control markings were found on any covers in researching this census. However, the marking on one of the wannabe covers illustrated below has been called a control marking. There is no evidence to support this claim.

### Provisional Wannabes



**Courtesy Civil War Philatelic Authentication Service (certificate 01627).**

This cover has been described as “San Antonio, Texas Provisional, W. Control At Left, Aug. 21 Cds At Right, Without Rate” (Philatelic Foundation Certificate 172017). The “PAID” marking is nothing more than an undenominated Paid marking used after June 1862 to indicate the payment of the universal 10c rate. While some postmarks had integral rates the San Antonio postmarks did not.

There is a charge box marking at UL (“Charge William Mann”). This marking may be an indication the cover was left at the post office where the correct postage was handstamped and charged to the box holder. This cover is not included in the census.



Courtesy Robert A. Siegel Auctions, Sale 777, lot 231.

The yellow marking on this cover was cut out from another cover. The cover was given a good certificate by the Philatelic Foundation in 1995, but it could not be found in a search of the Foundation's online Certificate Archive. The stamp is not canceled and thus there is no proof it originated on this cover as a provisional. For that reason, it is not included in the census.

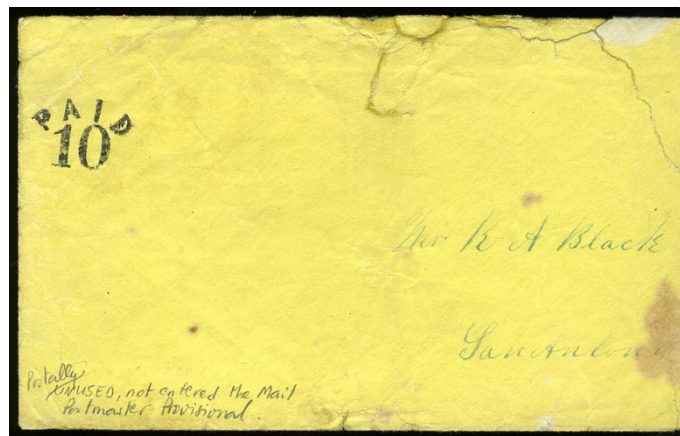


Image from a private source.

The cover above has sometimes been described as a "likely" provisional. However, it is a drop letter without a postmark, which is not unusual. **This marking is a provisional only when unused, postally used from another town, or under a postally used general issue.** This cover is not included in the census.

## Post War Use



Private collection

This is a postwar use of the E03 provisional as determined by the postmark. A stamp previously over the provisional marking has been removed.

## References

Bigalike, Jay, editor-in-chief. *Scott 2022 Specialized Catalogue of United States Stamps & Covers* (Sidney, OH; Amos Media, 2021), 1092.

Dietz Augusts, ed. *Dietz Catalog & Handbook (Specialized) of the Postage Stamps and Envelopes of the Confederate States of America* 1945 Edition (Richmond, VA: Dietz Press, 1945), 106, 122.

Dietz Augusts, ed. *Dietz Confederate States Catalog and Handbook of the Postage Stamps and Envelopes of the Confederate States of America* 1959 Edition (Richmond, VA: Dietz Press, 1959), 112, 128.

Skinner, Hubert C., Erin R. Gunter, and Warren H. Sanders. *The New Dietz Confederate States Catalog and Handbook* (Miami, FL: Bogg & Laurence, 1986), 107.

## Mini Census of San Antonio, Texas, Provisionals

<u>Pmk Date</u>	<u>Address</u>	<u>PmkPos</u>	<u>PrvPos</u>	<u>CN</u>
<b>5c black -- SAN-TX-E01 (76XU1A)</b>				
[4 Oct 1861]	Joseph H---	UR	UC	001
14 --- [186-]	Mrs A. E. Townsend / Colorado Co / Oakland p o / Texas	UR	LC	002
<b>10c red -- SAN-TX-E02x</b>				
10 Nov [1861]	To the Clerk of the District / Court of Dallas County / Dallas / Texas	UR	UC	004
<b>10c black -- SAN-TX-E03 (76XU1)</b>				
Unused	None		UL	003



## Full Census of San Antonio, Texas, Provisionals

Compiled by Francis J. Crown, Jr.

### 5c black -- SAN-TX-E01 (76XU1A)

[4 Oct 1861]

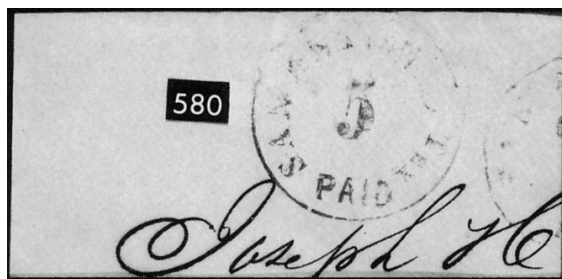
**Description:** Unknown San Antonio, Texas postmark UR, provisional marking UC. Information from partial image.

**Address:** Joseph H---

**Provenance:** None recorded.

**Source:** RAS-27Mar1982(595)-580. [001]

**Image Credit:** Robert A Siegel Auctions.



14 --- [186-]

**Description:** Black "SAN ANTONIO TEX" postmark UR, provisional marking LC.

**Address:** Mrs A. E. Townsend / Colorado Co / Oakland p o / Texas

**Provenance:** Camina.

**Source:** CWPAS-1828\*; RAS-24Feb1994(757)-655\*; RAS-22Jun2016(1132)-3209\*. [002]

**Image Credit:** Robert A Siegel Auctions.



## 10c red -- SAN-TX-E02x

10 Nov [1861]

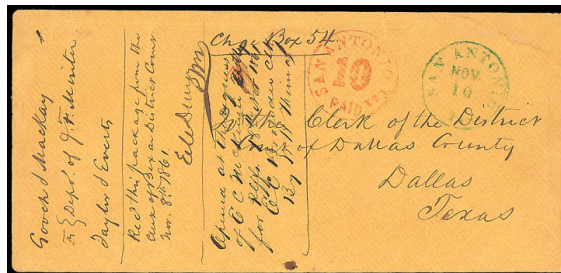
**Description:** Green "SAN ANTONIO TEX" postmark UR, provisional marking UC. Docketed "Chg Box 54" at UC. Also, multiple dockets across left half of cover. Problematic use - see "Notes."

**Address:** To the Clerk of the District / Court of Dallas County / Dallas / Texas

**Provenance:** King.

**Source:** CWPSX-King(Feb2021)-26\*; SR-10Mar2014(55)-2182. [004]

**Image Credit:** Schuyler Rumsey Auctions.



## 10c black -- SAN-TX-E03 (76XU1)

Unused

**Description:** Provisional marking UL. Docketed "G W G Browne" across center of cover.

**Address:** None

**Provenance:** None recorded.

**Source:** CWPAS-05701. [003]

**Image Credit:** Civil War Philatelic Authentication Service.

