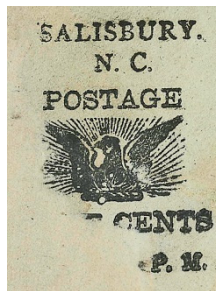


Census of Salisbury, North Carolina, Postmaster's Provisionals

Compiled by Francis J. Crown, Jr.

Description



SAY-NC-E01

The Salisbury Provisional

The Salisbury provisional was typeset using a stock cut of a phoenix with the town name and rate added in printer's type. This was then struck in the upper left corner of envelopes.

NOTE: The inclusion of an item in this census is not a guarantee of authenticity.

Count of the 5c Salisbury provisional

Provisional	CSA Cat No	Scott Cat No	Covers
5c black	NEW-LA-A02	75XU1	1

Notes

History

Some credit this cover as being from the Ferrary collection. There is no evidence to support this. Lot 90-91 in the 4th sale of the Ferrary collection contains one item described as "Salisbury (one)" without any details. Also, the Salisbury provisional cover does not bear the Ferrary trefoil in the lower right corner.

The earliest record of the Salisbury provisional is found in the 1900 (59th edition) of the Scott Catalog. The entry is text only and reads, "Envelope, 5c red." The next year the Collin and Calman Catalog (Collin – Reference) gives a few more details: "Type-set, printed on envelopes of various sizes and colors. The design is a phoenix with outspread wings, above it, "POSTAGE – SALISBURY, N. C." in two lines; below, "FIVE CENTS – P. M." and the name of the postmaster in manuscript. All of the inscriptions are in small sans-serif capitals. 5c red on white." The item is not illustrated.

It is obvious the catalog editors had only a brief verbal or written description of the cover. Further how did the single cover get listed as being on envelopes of various sizes and colors, and what about the name of the postmaster in manuscript? The brief "5c red" would continue to be the only description available to philatelist for another 30 years.

In 1931 a brief article by August Dietz appeared (Dietz – Reference). He had the opportunity to examine the copy from the collection of Judge Robert S. Emerson. He speculated that the name to the left of "P. M." in the bottom of the design would have been "M. A. Smith," the name of the Confederate postmaster.

The Ever Changing Cover

The following images show how the Salisbury provisional cover has changed over the years as the result of restoration work.



The cover as it appeared in the Caspary sale. Note the torn off left edge that took part of the provisional design.



The cover as it appeared in the Solomon sale. Note the rudimentary repair made to the left side to fill in part of the envelope that was torn off.



The cover as it appeared in the Brandon sale after expert restoration work.

Reference

Collin, Henry and Henry L. Calman, *A Catalogue for Advanced Collectors* Vol. 3 (New York, NY: Scott Stamp and Coin, [1901]), 1258.

----- *Scott's Standard Postage Stamp Catalogue* 59th ed. (New York, NY: Scott Stamp and Coin 1900), 69.

Dietz, August, "The Salisbury, N. C., Another Major Provisional," *New Southern Philatelist* 7:4 (February 1931): 117.

Mini Census of Salisbury, North Carolina, Provisionals

<u>Pmk Date</u>	<u>Address</u>	<u>PmkPos</u>	<u>PrvPos</u>	<u>CN</u>
5c black -- SAY-NC-E01 (75XU1)				
1 Sep [1861]	MRs May W. Shoher / Care of Mr. Pike Bowers Clover Depot / Halifax Co. / Va.	UC-UR	UL	001

Full Census of Salisbury, North Carolina, Provisionals

Compiled by Francis J. Crown, Jr.

5c black -- SAY-NC-E01 (75XU1)

1 Sep [1861]

Description: Black "SALISBURY / N. C." year dated postmark UC-UR, provisional marking UL.

Address: MRs May W. Shober / Care of Mr. Pike Bowers
Clover Depot / Halifax Co. / Va.

Provenance: Caspary, Lilly, Solomon, Brandon, Crumbley.

Source: CWPSX-Crumbley(Jan2020)-19*; HRH-
5Mar1956(989-3)-451; RAS-(27Apr1967(317)-
366; JWK-714Nov1981(78)-91; RAS-
24Jun2014(1073)-335*. [001]

Image Credit: Robert A Siegel Auctions.

