

Census of Sumter, South Carolina, Postmaster's Provisionals

Compiled by Francis J. Crown, Jr.

Description



SUM-SC-E01



SUM-SC-E02

The Sumter Provisionals

The Sumter provisionals were prepared by handstamping envelopes with “PAID” and “5” or “10” markings. The same markings were used on stampless covers. **They are a provisional only when unused, used from another town, or under a postally used general issue.**

NOTE: Every effort is made to ensure the accuracy of the census, but the inclusion of an item is not a guarantee of authenticity.

Count of the Sumter provisionals

Provisional	CSA Cat No	Scott Cat No	Covers
5c black	SUM-SC-E01	80XU1	NA
5c black revalued “10”	SUM-SC-E01a	80XU1a	NA
5c black mailed from another town	SUM-SC-E01b		1
5c black under postally used general issue	SUM-SC-E01c		NA
10c black	SUM-SC-E02	80XU2	NA
10c black under postally used general issue	SUM-SC-E02		1

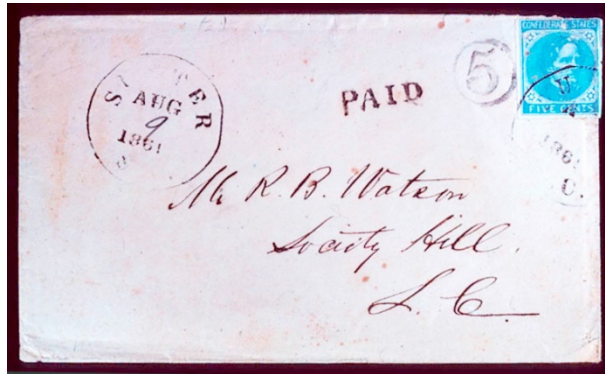
Notes

CSA Catalog Listings

The different types of provisional uses listed in the “Count of Sumter Provisionals” (above) are taken from the CSA Catalog. Unfortunately, they are not all correct. A review of the editor’s notes shows that the 5c values E01a (revalued “10”) and E01c (under postally used general issue) were not verified and should not have been listed. The listing for the 10c value is correct.

Stampless or Provisional Use?

The cover illustrated below was the basis for the unverified 5c E01c listing (under postally used general issue). As can be seen the provisional marking was not under a postally used general issue. The handstamped marking and the 5c blue stamp make up the ten cent rate which was in effect when the cover was mailed. (Sumter did not change the year date in the postmark after 1861). it is not possible to determine if the markings are provisional and the stamp added or if the stamp was applied first and the markings added to make up the 10c rate. This cover is not included in the census.



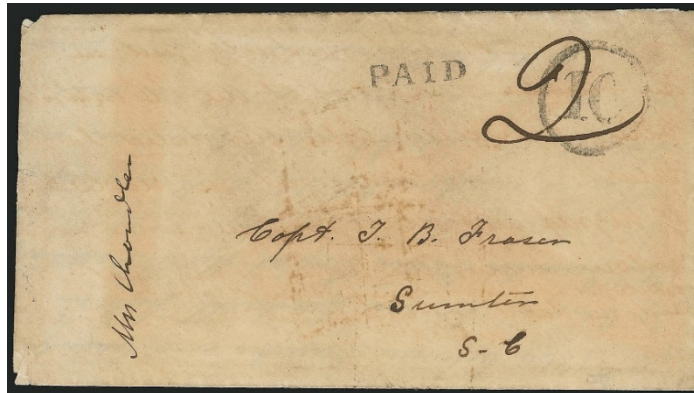
Revalued Provisional?

The cover illustrated on the next page has been described as a revalued provisional. Various reasons for this have been given from the postmaster giving credit for the 8c difference between the letter rate and the drop letter rate to nothing more than it was rerated for a drop letter.

These explanations overlook a basic fact. This rate marking is found on both stampless and provisional envelopes. In these circumstances a cover is a provisional only if it is unused, postally used from another town, or under a postal used general issue. This cover does not meet the criteria. Some may say it was a 10c provisional that was left at the post office. When sorting the mail, the clerk saw it was a drop letter and rerated it as such. This is possible but

very doubtful. The clerk was not going to take the time to re-rate a drop letter, he would just put it in the box for Capt. Fraser.

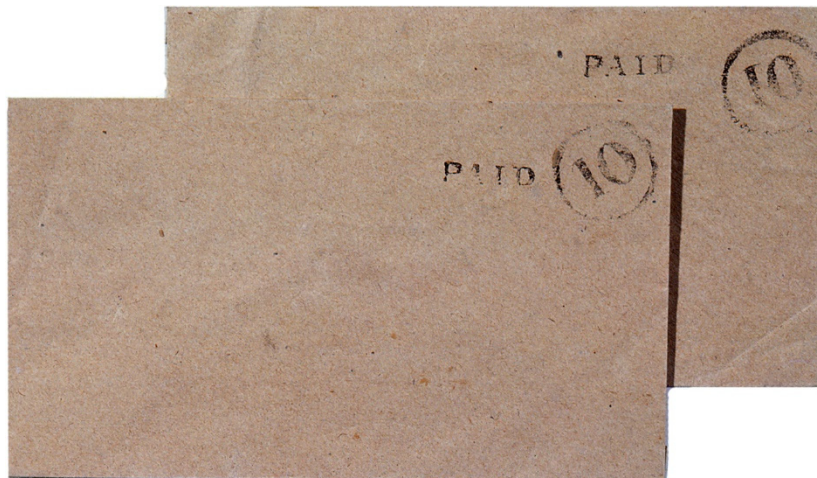
The simplest and most logical explanation is that the letter was brought to the post office by the sender who took it to the clerk to pay the postage. The clerk assuming it was an ordinary letter handstamped the "10" marking on it. Realizing it was a drop letter he revalued it to 2c. This cover is not included in the census.



Courtesy Robert A. Siegel Auctions, Sale 860

Unused Provisionals?

Illustrated below are what appear to be two unused examples of the 10c black (SUM-SC-E02) provisional. However, the envelopes do not seem to fit the period of known use of the provisionals. They require examination by an authentication service. These are not included in the census.



Reference

MacBride, Van Dyk, "A Special Article: Postmaster's Provisional or Handstamp Paid?"
Confederate Stamp Album 2:6 (June 1957): 1-2

Mini Census of Sumter, South Carolina, Provisionals

<u>Pmk Date</u>	<u>Address</u>	<u>PmkPos</u>	<u>PrvPos</u>	<u>CN</u>
5c black postally used from another town -- SUM-SC-E01b				
2 Oct [1861]	W. F. B. Haynsworth / Sumterville / So. Ca.	UL-UC	UC-UR	002
10c black under postally used general issue -- SUM-SC-E02a				
14 [--- 186-]	Miss Rufus. H. Owen / "Wolf Trap P. O / Richmond & D. R. Road / Halifax County / Virginia	UR	UR	001

Full Census of Sumter, South Carolina, Provisionals

Compiled by Francis J. Crown, Jr.

5c black postally used from another town -- SUM-SC-E01b

2 Oct [1861]

Description: Blue "COLUMBIA / S. C." postmark UL-UC. Sumter provisional marking not recognized in Columbia and lined out UL-UC. Blue Columbia "PAID 5" marking added UC.

Address: W. F. B. Haynsworth / Sumterville / So. Ca.

Provenance: Kohn, Warren.

Source: RAS-29Oct1970(382)-95; SR-27Apr2013(53)-4292*. [002]

Image Credit: Schuyler Rumsey Auctions.



10c black under postally used general issue -- SUM-SC-E02a

14 [--- 186-]

Description: Black "SUMTER / S. C." postmark ties 20c green over provisional marking UR. Docketed "Via/ Danville / Va" at LL.

Address: Miss Rufus. H. Owen / "Wolf Trap P. O / Richmond & D. R. Road / Halifax County / Virginia

Provenance: Everett, Agre.

Source: RAS-30Oct1993(754)-188; RAS-25Sep2002(850)-5791; SR-3Feb2009(32)-1253*. [001]

Image Credit: Schuyler Rumsey Auctions.

