

Census of Goliad, Texas, Off-Cover Provisionals

Compiled by Francis J. Crown, Jr.

Description



5c Type A
GOL-TX-A01 (black on white)
GOL-TX-A02 (black on gray)
GOL-TX-A03 (black on rose)



5c Type B
GOL-TX-A04 (black on gray)
GOL-TX-A05 (black on dark blue)



10c Type A
GOL-TX-A06 (black on white)
GOL-TX-A07 (black on rose)



10c Type B
GOL-TX-A08 (black on gray)
GOL-TX-A09 (black on dark blue)

Goliad Provisionals

For more information on the provisionals and their printing see Description in “GOLIAD (Cvr)” census listing.

Color descriptions are based on information in the source material (books, journals, and auctions). Color descriptions in older publications do not always correspond to those in newer publications. Where possible color illustrations are used to verify a color, but these are not always reliable. Where there is a difference in the description of a color best judgement is used to make a determination.

NOTE: Every effort is made to ensure the accuracy of the census, but the inclusion of an item is not a guarantee of authenticity.

Count of the off-cover Goliad provisionals

(A) –Type A (B) – Type B

Provisional	CSA Cat No	Scott Cat No	Total
5c black on white (A)	GOL-TX-A01	29X1	2
5c black on gray (A)	GOL-TX-A02	29X2	2
5c black on rose (A)	GOL-TX-A03	29X3	1
5c black on gray (B)	GOL-TX-A04	29X6	2
5c black on gray “GOILAD” error in right stamp (B)	GOL-TX-A04a	29X6a	1
5c black on dark blue (B)	GOL-TX-A05	29X8	--
10c black on white (A)	GOL-TX-A06	29X4	2
10c black on rose (A)	GOL-TX-A07	29X5	1
10c black on gray (B)	GOL-TX-A08	29X7	3
10c black on gray “GOILAD” error (B)	GOL-TX-A08a	29X7a	1
10c black on gray ornamental printing on reverse (B)	GOL-TX-A08b	--	--
10c black on dark blue (B)	GOL-TX-A09	29X9	3

Notes

10c Black on Dark Blue

There are only three recorded copies of the 10c black on dark blue. One is on a piece and the other two are off cover. This discussion addresses only the two off cover examples. Both are tied by a pen “X” and look the same at first (illustrations below).



The image on the left is the same stamp as CN-009 with the blue color removed. The image on the right (CN-018) is from a photograph of the Goliad provisionals Albert Steves had in his collection. The most noticeable difference between the two is seen in the bottom border. On the left example the border is clear of the margin. On the right example the margin cuts into part of the border. Steves description of the cover states the stamp is “erased in center.” As far as is known this stamp has never been on the market.

The image on the right is copied from “List of Thirty Confederate States Postage Stamps,” that Albert Steves prepared about 1900. An image of the stamp also appeared in the September 1893 issue of the *Philatelic Journal of America*, page 76. The image in the journal is poorer than the image above.

Mini Census of Goliad, Texas, Off-Cover Provisionals

<u>Pmk Date</u>	<u>Address</u>	<u>PmkPos</u>	<u>PrvPos</u>	<u>CN</u>
5c black on white (A) -- GOL-TX-A01 (29X1)				
No Date	NA			008
No Date	NA			005
5c black on gray (A) -- GOL-TX-A02 (29X2)				
No Date	NA			002
No Date	NA			003
5c black on rose (A) -- GOL-TX-A03 (29X3)				
No Date	NA			004
5c black on gray (B) -- GOL-TX-A04 (29X6)				
No Date	NA			006
No Date	NA			007
5c black on gray pair (B) (GOILAD error in right stamp) -- GOL-TX-A0-4a				
No Date	NA			001
10c black on white (A) --- GOL-TX-A06 (29X4)				
No Date	NA			014
No Date	NA			012
10c black on rose (A) -- GOL-TX-A07 (29X5)				
No Date	NA			011
10c black on gray (B) -- GOL-TX-A08 (29X7)				
No Date	NA			010
No Date	NA			013
No Date	NA			016

<u>Pmk Date</u>	<u>Address</u>	<u>PmkPos</u>	<u>PrvPos</u>	<u>CN</u>
10c black on gray (B) (GOILAD error) -- GOL-TX-A08a (29X7a)				
No Date	NA			017
10c black on dark blue (B) --- GOL-TX-A09 (29X9)				
15 Feb [186-]	NA			015
No Date	NA			009
No Date	NA			018

Full Census of Goliad, Texas, Off-Cover Provisionals

Compiled by Francis J. Crown, Jr.

5c black on white (A) -- GOL-TX-A01 (29X1)

No Date

Description: Provisional canceled by black "PAID" marking and signed "Clarke / PM" in magenta ink.

Address: NA

Provenance: Kirkland.

Source: PF-10052; PPH-92*; HRH-1Mar1962(1423)-916. [008]

Image Credit: Postmasters' Provisionals: United States and Confederate States (2016 book by Haub)



No Date

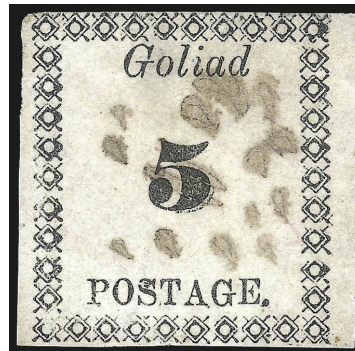
Description: Provisional canceled by black ink spots. Faint trace of magenta cancel.

Address: NA

Provenance: Hessel, West Haven, Brandon.

Source: HRH-21Oct1975(2291)-178; CHY-4Oct2006-427*; RAS-24Jun1014(1073)-246*. [005]

Image Credit: Robert A Siegel Auctions



5c black on gray (A) -- GOL-TX-A02 (29X2)

No Date

Description: Provisional signed "Clarke / PM."

Address: NA

Provenance: Weill.

Source: CWPAS-02104*; CHR-13Oct1989-1134. [002]

Image Credit: Christie's Auctions



No Date

Description: Provisional signed "Clarke / PM."

Address: NA

Provenance: Ferrary, Hind, Caspary.

Source: PF-57158; GIL-5Apr1922(96-3)-629; PKA-20Nov1933(1)-1498(118); HRH-5Mar1956-126. [003]

Image Credit: M G Gilbert (auctions)



5c black on rose (A) -- GOL-TX-A03 (29X3)

No Date

Description: Provisional canceled by black "PAID" marking and signed "Clarke / PM" in magenta ink.

Address: NA

Provenance: Steves, Caspary, Kirkland, Erivan.

Source: LTCS-14; MESC-22Jun1903(16:21)-325; PPH-92*; HRH-5Mar1956(989)-127; HRH-1Mar1962(1423)-91. [004]

Image Credit: Postmasters' Provisionals: United States and Confederate States (2016 book by Haub)



5c black on gray (B) -- GOL-TX-A04 (29X6)

No Date

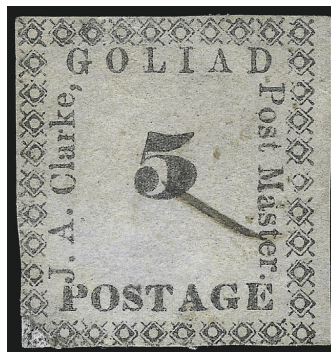
Description: Provisional canceled by black pen stroke.

Address: NA

Provenance: Steves, Hessel, Brandon.

Source: PHJA-Sep1893(10:3)-76; LTCS-10; HRH-21Oct1975-179; RAS-24Jun2014(1073)-249*. [006]

Image Credit: Robert A Siegel Auctions



No Date

Description: Provisional canceled by black pen stroke.

Address: NA

Provenance: Gorham.

Source: CWPAS-02972; PF-327084*; RAS-8May1998(800)-388*; RAS-17May2022(1255)-1175*. [007]

Image Credit: Robert A Siegel Auctions



5c black on gray pair (B) (GOILAD error in left stamp) -- GOL-TX-A0-4a

No Date

Description: Provisionals canceled by postmark rim. Left copy with GOILAD error.

Address: NA

Provenance: Ferrary, Caspary, Lilly, Erivan.

Source: PF-25681; PPH-93*; GIL-5Apr1922(96-3)-626; HRH-5Mar1956(989)-131; RAS-27Apr1967(317)-3. [001]

Image Credit: Postmasters' Provisionals: United States and Confederate States (2016 book by Haub)



10c black on white (A) --- GOL-TX-A06 (29X4)

No Date

Description: Provisional signed "Clarke / PM" in black ink. There is a blue wash over the printing.

Address: NA

Provenance: Brandon.

Source: PF-31852; RAS-26Jun2012(1025)-301*; RAS-24Jun2014(1073)-248*. [014]

Image Credit: Robert A Siegel Auctions



No Date

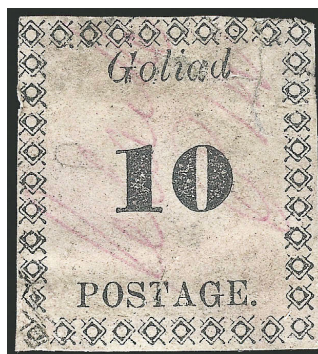
Description: Provisional signed "Clarke / PM" in magenta ink. Lower left corner restored.

Address: NA

Provenance: Steves, Caspary, Brandon.

Source: PHJA-Sep1893(10-3)-76, LTCS-15; HRH-5Mar1956(989)-129; RAS-24Jun2014(1073)-247*. [012]

Image Credit: Robert A Siegel Auctions



10c black on rose (A) -- GOL-TX-A07 (29X5)

No Date

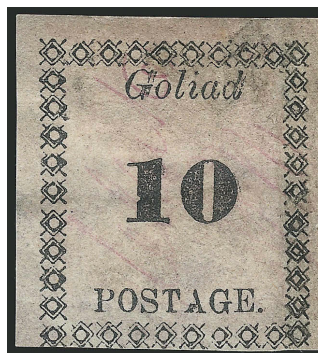
Description: Provisional signed "Clarke / PM" in magenta ink. Right edge restored.

Address: NA

Provenance: Steves, Weill.

Source: CWPAS-02077; LTCS-16; CHR-13Oct1989-1135; RAS-20Apr1991(737)-761*; RAS-5Jun1995(767)-388*; RAS-24Jun2015(1104)-2124*. [011]

Image Credit: Robert A Siegel Auctions



10c black on gray (B) -- GOL-TX-A08 (29X7)

No Date

Description: Provisional canceled by black "PAID" marking.

Address: NA

Provenance: Ferrary, Hind, Hall, Sharrer.

Source: PF-357181*; GIL-5Apr1922(96-3)-630; PKA-20Nov1933(1)-1502(122); RAS-17Apr2000(823)-404*; RAS-10Dec2012(1035)-28*. [010]

Image Credit: Robert A Siegel Auctions



No Date

Description: Provisional canceled by black "PAID" marking.

Address: NA

Provenance: Weill.

Source: CWPAS-02057; CHR-13Oct1989-1136; RAS-22Jun2016(1132)-3098*. [013]

Image Credit: Robert A Siegel Auctions



No Date

Description: Provisional canceled by black postmark rim.

Address: NA

Provenance: Steves, Caspary, Kirkland, Erivan.

Source: PHJA-Sep1893(10:3)-76; LTCS-12; HRH-5Mar1956(989)-132; HRH-1Mar1962(1423)-919; HRH-17Jan2023(3062)-95*. [016]

Image Credit: H R Harmer Auctions



10c black on gray (B) (GOILAD error) -- GOL-TX-A08a (29X7a)

No Date

Description: Provisional canceled by postmark rim. This stamp has not been on the market since the early 1900s.

Address: NA

Provenance: Steves.

Source: PHJA-Sep1893(10:3)-76; LTCS-11; MESC-22Jun1903(16:21)-325. [017]

Image Credit: List of Thirty Confederate States Postage Stamps (circular)



10c black on dark blue (B) --- GOL-TX-A09 (29X9)

15 Feb [186-]

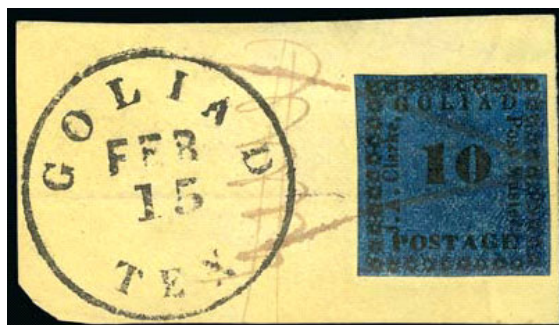
Description: Provisional canceled by black pen strokes. Used on piece.

Address: NA

Provenance: DK.

Source: CWPAS-01623*; PF-503935*; RAS-28Mar2012(1022)-1027*. [015]

Image Credit: Robert A Siegel Auctions



No Date

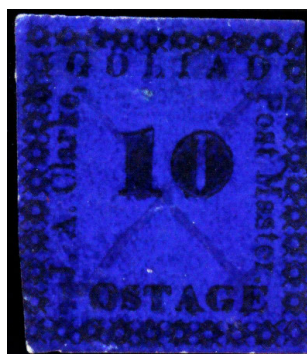
Description: Provisional canceled black "X" pen strokes. See "Notes."

Address: NA

Provenance: Steves, Hind, Lilly, West Haven, Brandon.

Source: PH-12425; PHJA-Sep1893(10:3)-76; LTCS-13; PKA-20Nov1933(1)-1501(121); RAS-27Apr1967(317)-310; CHY-4Oct2006-428*; RAS-24Jun2014(1073)-252*. [009]

Image Credit: Cherrystone Auctions



No Date

Description: Provisional canceled by "X" pen strokes. Only known image. See "Notes."

Address: NA

Provenance: Steves.

Source: PHJA-Sep1893(10-3)-76; LTCS-13. [018]

Image Credit: List of Thirty Confederate States Postage Stamps (circular)

