

Census of Patterson, North Carolina, Postmaster's Provisionals

Compiled by Francis J. Crown, Jr.

Description



PAT-NC-E01



PAT-NC-E02



Control

The Paterson Provisionals

The Patterson provisionals were prepared by handstamping envelopes with a fancy "PAID 5" or "PAID 10" marking. The envelopes were also struck with the undated town postmark as a control.

WARNING: The same markings were used on stampless covers. They are provisionals only when unused, postally used from another town, or under a postally used general issue. The control must be undated. The markings were also used to cancel stamps. Such uses are not provisionals.

NOTE: Every effort is made to ensure the accuracy of the census, but the inclusion of an item is not a guarantee of authenticity.

Count of the Patterson provisionals

Provisional	CSA Cat No	Scott Cat No	Covers
5c black w/control	PAT-NC-E01	149XU1	1
10c black w/control	PAT-NC-E02	149XU2	1

Notes

History

The earliest mention of the Patterson provisional is in the February 1948 issue of the *Confederate Bulletin* (Dietz – Reference). Mr. P. V. Critcher of Lexington, NC submitted an unused example of the 5c value to August Dietz. The only other details given were that the postmark did not have date logos and was assumed to be a control marking. This is probably the unused 5c cover listed in this census.

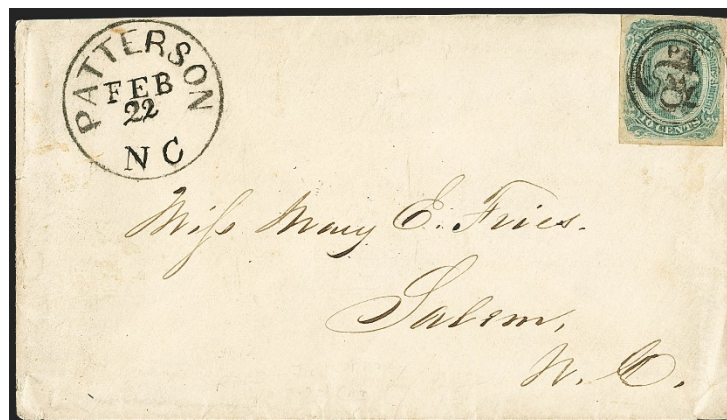
Strikes of the provisional and control markings are very light on all the recorded covers.

Same Markings Used to Cancel Stamps

The same markings used as provisionals were also used to cancel stamps. These are not provisional uses. Two examples are below.



Pair of 5c #7 just tied by Patterson fancy “PAID 10” marking. Courtesy Schuyler Rumsey Auctions (Sale 24, Lot 331).



10c #12 just tied by Patterson fancy “PAID 10” marking. Courtesy Robert A. Siegel Auctions (Sale 1151, Lot 1736).

A Similar Marking

The stampless “PAID 10” marking used by Elkin, North Carolina is similar to that used by Patterson. Examples of both are illustrated below.



Patterson Marking



Elkin Marking

The most noticeable difference between the two are the ornaments at the ends of letter “C” in the Patterson marking. These ornaments are not found on the Elkin marking.

References

Crumbley, Tony L., "Fancy Paid Markings of Patterson, North Carolina," *Confederate Philatelist* 55:1 (January-March 2001): 27-30.

Dietz, August, ed. "Patterson, N. C. Provisional Envelope," *Confederate Bulletin* 18 (February 1948): 3.

Milgram, James W. "Fancy Rating Postmarks from North Carolina," *Confederate Philatelist* 25:5 (September-October 1980): 131-133.

Mini Census of Patterson, North Carolina, Provisionals

<u>Pmk Date</u>	<u>Address</u>	<u>PmkPos</u>	<u>PrvPos</u>	<u>CtlPos</u>	<u>CN</u>
5c black w/control -- PAT-NC-E01 (149XU1)					
Unused	NA		UR	UL	002
10c black w/control -- PAT-NC-E02 (149XU2)					
No Postmark	Master Samuel L. Patterson / Oaks / Orange County / N. C.	UL	UR	UL	001

Full Census of Patterson, North Carolina, Provisionals

Compiled by Francis J. Crown, Jr.

5c black w/control -- PAT-NC-E01 (149XU1)

Unused

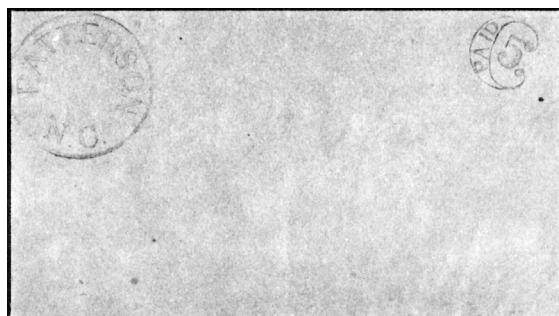
Description: Provisional marking UR, control UL.

Address: NA

Provenance: None recorded.

Source: JWK-27Mar1976(25)-129. [002]

Image Credit: John W Kaufmann Auctions.



10c black w/control -- PAT-NC-E02 (149XU2)

No Postmark

Description: Provisional marking UR, control UL. Apparently carried outside the mail.

Address: Master Samuel L. Patterson / Oaks / Orange County / N. C.

Provenance: Everett.

Source: CWPAS-02695*; RAS-30Oct1993(754)-73; RAS-22Jun2016(1132)-3190*. [001]

Image Credit: Robert A Siegel Auctions.

