

# Census of Nacogdoches, Texas, Stampless Markings

Compiled by Francis J. Crown, Jr.

## Description



Type A



Type B



Type C



Type D

Nacogdoches Stampless Markings (not to scale)

The different markings are identified by the 2012 *Confederate States of American (CSA) Catalog and Handbook* Stampless Type. The letters "X, Y, and Z," are used to designate added items not in the CSA Catalog. The absence of a CSA Catalog Type in the illustrations above indicates that item is not included in the census.

Items are presented in the census in the order of the illustrations above.

This census is based on images of covers. Only covers for which an image was obtained are listed in the census. For this reason, this census may be far from complete.

**NOTE:** Every effort is made to ensure the accuracy of the census, but the inclusion of an item is not a guarantee of authenticity.

## Count of the Nacogdoches Stampless Markings

Marking	Color	Type	Covers	Everett Count*
PAID + 2c (ms)	Black	Aa	1	1
PAID + 5	Black	B	1	1
PAID +10	Black	C	2	2
10 [due]	Black	D	2	NA

\* See "Stampless - Important Information" on Stampless Covers page for information on the Everett Count.

## Notes

### Legacy Markings

The 2012 CSA Catalog includes as a legacy listing a Type A marking without a rate (see illustration below). An example of this marking was not found in the preparation of this census.

PAID

Type A

### No Rate

The cover below was sent by a soldier as evidenced by the endorsement at lower left. However, it bears no due marking or due rate. It is not included in the census.



Union patriotic envelope used from Nacogdoches on 9 February with no due marking. Courtesy Robert A. Siegel Auctions.

## Mini Census of Nacogdoches, Texas, Stampless Covers

<u>Pmk Date</u>	<u>Address</u>	<u>PmkPos</u>	<u>PrvPos</u>	<u>CN</u>
<b>PAID + 2c (ms), black-- Type Aa</b>				
22 Oct 1861	Hon W. P. Hill / Galveston / Texas	UL	UC-UR	001*
<b>PAID + 5, black -- Type</b>				
13 Nov 1861	Abner S Laden / Rush P O / Cherokee Co / Texas	UL	UR	002*
<b>PAID + 10, black -- Type C</b>				
6 May [1863]	S. M Noble / Lieut Col C. S. Army / Little Rock / Ark	LL	UC-UR	003*
13 Apr [186-]	Dr Jas H Starr / Tyler / Smith Co / Gen [Texas]	LC-LR	LL	004*
<b>10 [due], black -- Type D</b>				
1 Feb [186-]	Mrs Affleck / ---	UL	UR-CR	005
12 Apr [186-]	Miss L. H. Moss / Willow Springs P O / Milam Co / Texas	UC-CTR	UR	006*

\* Indicates a color image

## Full Census of Nacogdoches, Texas, Stampless Covers

Compiled by Francis J. Crown, Jr.

### PAID + 2c (ms), black-- Type Aa

22 Oct 1861

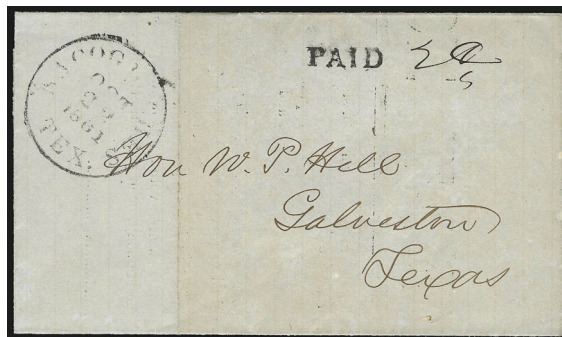
**Description:** Black "NACOGDOCHES / TEX." YD postmark UL, Type Aa marking UC-UR. Printed notice.

**Address:** Hon W. P. Hill / Galveston / Texas

**Provenance:** Zimmerman

**Source:** RAS-14May2003(860)-489\*. [001]

**Image Credit:** Robert A Siegel Auctions.



### PAID + 5, black -- Type B

13 Nov 1861

**Description:** Black "NACOGDOCHES / TEX." YD postmark UL, Type B marking UR.

**Address:** Abner S Laden / Rush P O / Cherokee Co / Texas

**Provenance:** "Camina," Agre

**Source:** RAS-23Feb1994(757)-830\*; RAS-24Sep2002(850)-5522; SR-15Feb2008(29)-3414\*. [002]

**Image Credit:** Schuyler Rumsey Auctions.



## PAID + 10, black -- Type C

6 May [1863]

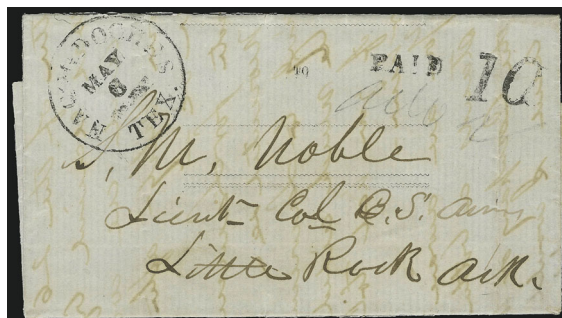
**Description:** "NACOGDOCHES / TEX." slug YD postmark LL, Type C marking UC-UR. Folded deed with May 1863 docket on reverse.

**Address:** S. M Noble / Lieut Col C. S. Army / Little Rock / Ark

**Provenance:** "Camina"

**Source:** RAS-23Feb1994(757)-831; RAS-28Oct1997(795)-218; RAS-13May2003(860)-580\*. [003]

**Image Credit:** Robert A Siegel Auctions.



13 Apr [186-]

**Description:** "NACOGDOCHES / TEX." YD postmark LC-LR, Type C marking LL. Folded letter.

**Address:** Dr Jas H Starr / Tyler / Smith Co / Gen [Texas]

**Provenance:** None recorded.

**Source:** Private\*. [004]

**Image Credit:** Private Collection.



## 10 [due], black -- Type D

1 Feb [186-]

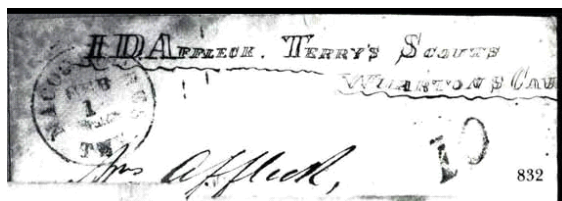
**Description:** "NACOGDOCHES / TEX." slug YD postmark UL, Type D marking UR-CR. Soldier's endorsement across top. Partial image of full cover.

**Address:** Mrs Affleck / ---

**Provenance:** "Camina"

**Source:** RAS-23Feb1994(757)-832. [005]

**Image Credit:** Robert A Siegel Auctions.



12 Apr [186-]

**Description:** Black "NACOGDOCHES / TEX." slug YD postmark  
UC-CTR, Type D marking UR.

**Address:** Miss L. H. Moss / Willow Springs P O / Milam Co  
/ Texas

**Provenance:** Kaplan

**Source:** DFU-14May2010-10194\*. [006]

**Image Credit:** David Feldman USA (auctions).

