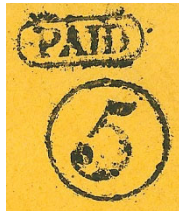


Census of Tazewell, Tennessee, Stampless Markings

Compiled by Francis J. Crown, Jr.

Description



Type B



Type C



Type D

Tazewell Stampless Markings (not to scale)

The different markings are identified by the 2012 *Confederate States of American (CSA) Catalog and Handbook* Stampless Type. The letters "X, Y, and Z," are used to designate added items not in the CSA Catalog. The absence of a CSA Catalog Type in the illustrations above indicates that item is not included in the census.

Items are presented in the census in the order of the illustrations above.

This census is based on images of covers. Only covers for which an image was obtained are listed in the census. For this reason, this census may be far from complete.

NOTE: Every effort is made to ensure the accuracy of the census, but the inclusion of an item is not a guarantee of authenticity.

Count of the Tazewell Stampless Markings

Marking	Color	Type	Covers	Everett Count*
PAID (enclosed) + 5 (in circle)	Black	B	2	2
PAID (enclosed) + 10 (in circle)	Black	C	1	1
10 (in circle) [due]	Black	D	2	--

* See "Stampless - Important Information" on Stampless Covers page for information on the Everett Count.

Notes

Legacy Markings

The 2012 CSA Catalog includes as a legacy listing a Type A marking (PAID (enclosed) + 20 (ms) – see illustration below). An example of this marking was not found in the preparation of this census. It is possible this listing was included in error as there is a Tullahoma that meets this description.



Type A

Mini Census of Tazewell, Tennessee, Stampless Covers

<u>Pmk Date</u>	<u>Address</u>	<u>PmkPos</u>	<u>PrvPos</u>	<u>CN</u>
PAID (enclosed) + 5 (in circle), black -- Type B				
20 Feb [1862]	Charles Smith / Clk & Master / Rutledge / Tenn	UL	UR	002*
-- Aug [186-]	J. A. Spring, Editor &c. / Knoxville / Tennessee	UL	UR	001*
PAID (enclosed) + 10 (in circle), black -- Type C				
1- Jun [186-]	Mr Theo Rogan / Russellville East / Tennessee	UL	UR	003*
10 (in circle), black -- Type D				
10 Aug [186-]	Mr John --- / Fra---	UL	UR	005*
20 Aug [186-]	Mr John B. Cloer / Franklin / N. C.	UR	UC	004*

* Indicates a color image

Full Census of Tazewell, Tennessee, Stampless Covers

Compiled by Francis J. Crown, Jr.

PAID (enclosed) + 5 (in circle), black -- Type B

20 Feb [1862]

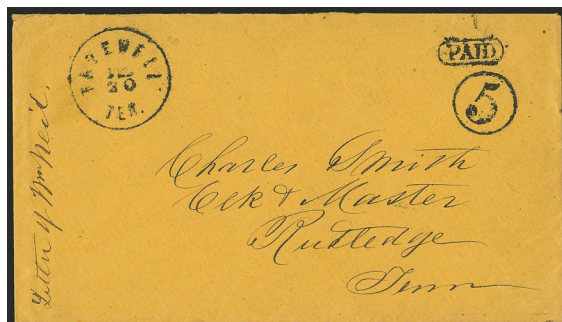
Description: Black "TAZEWELL / TEN." postmark UL, Type B marking UR.

Address: Charles Smith / Clk & Master / Rutledge / Tenn

Provenance: Rudy, Boshwit

Source: RAS-27Apr2004(874)-102*; RAS-27Sep2007(940)-285*. [002]

Image Credit: Robert A Siegel Auctions.



-- Aug [186-]

Description: Black "TAZEWELL / TEN." postmark UL, Type B marking UR.

Address: J. A. Spring, Editor &c. / Knoxville / Tennessee

Provenance: Solomon

Source: Private*; JWK-14Nov1981(78)-333. [001]

Image Credit: Private Collection.



PAID (enclosed) + 10 (in circle), black -- Type C

1- Jun [186-]

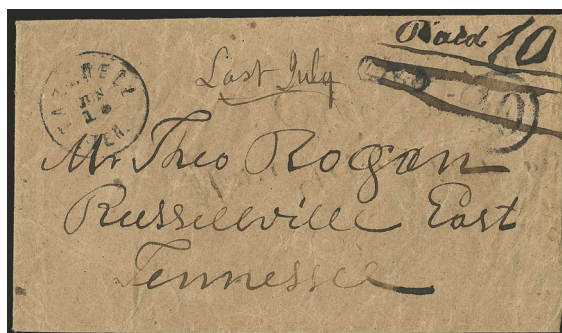
Description: Black "TAZEWELL / TEN." postmark UL, Type C marking UR. Rate markings lined out.

Address: Mr Theo Rogan / Russellville East / Tennessee

Provenance: Agre, Boshwit

Source: 24Sep2002(850)-5455; RAS-27Sep2007(940)-286*. [003]

Image Credit: Robert A Siegel Auctions.



10 (in circle), black -- Type D

10 Aug [186-]

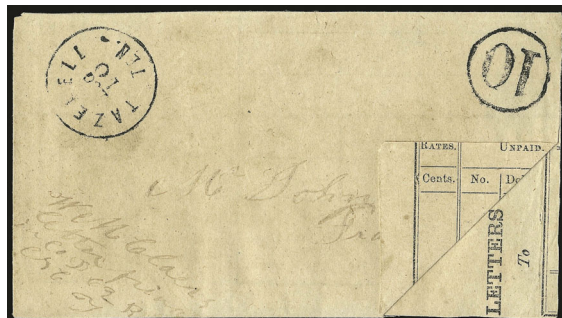
Description: Black "TAZEWELL / TEN." postmark UL, Type D marking UR. Adversity cover made from printed form. Soldier's endorsement LL.

Address: Mr John --- / Fra---

Provenance: Boshwit

Source: SR-15Apr2005(20)-2578*; RAS-27Sep2007(940)-498*; RAS-28Sep2012(1241)-1312*. [005]

Image Credit: Robert A Siegel Auctions.



20 Aug [186-]

Description: Black "TAZEWELL / TEN." postmark UR, Type D marking UC. Adversity cover made from printed form. Soldier's endorsement across left end.

Address: Mr John B. Cloer / Franklin / N. C.

Provenance: Boshwit

Source: Private*; RAS-27Sep2007(940)-499*. [004]

Image Credit: Private Collection.

