

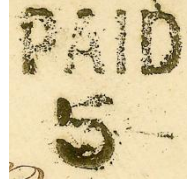
Census of Brookhaven, Mississippi, Stampless Markings

Compiled by Francis J. Crown, Jr., Jim E. Montich, and Jerry S. Palazolo

Markings



Type X



Type A



Type B



Type C



Type D

Brookhaven Stampless Markings (not to scale)

Description and Count

Marking	Color	Type	Covers	Everett Count ¹
PAID 5	Black	X	1	--
PAID 5	Black	A	4	3
PAID 10	Black	B	3	3
PAID 10, revalued 20 (ms)	Black	Ba	1	--
DUE 5	Black	C	1	--
DUE 5	Blue	Ca	-- ²	--
DUE 10	Blue	D	1	--

1. The Everett Count **is not always accurate**. For more information [click here](#).

2. No example of this marking was found while preparing this census.

NOTE: Every effort is made to ensure the accuracy of the census, but the inclusion of an item is not a guarantee of authenticity.

Notes

Union Occupation

On 29 April 1863, a Union raiding party briefly occupied the town and burned public buildings.

Types X and A

These two types look very similar, but there is a significant difference in the “5” of the markings as seen in the illustrations below.



Type X



Type A



Type X



Type A

The “5” in the X marking is narrower and taller than the “5” in the A marking.

The flag of the “5” in the X marking slants upward while in the A marking it is almost

The counter of the “5” in the X marking is terminated by a ball while the A marking has no terminal.

There is also a difference between the “PAID” in the two types. The counter of the “P” is larger in the X marking.

There is an interesting characteristic of the A marking. It appears to be a form with the “5” locked below the “PAID.” Some strikes show the “5” moving laterally indicating the locking mechanism was loose.

Mini Census Brookhaven, Mississippi, Stampless Covers

<u>Pmk Date</u>	<u>Address</u>	<u>CN</u>
Type X -- black, PAID + 5 (flag slopes upward)		
19 Aug [1861]	Miss Mary Turner / Edinburg [sic] / Mississippi	009*
Type A -- black, PAID + 5		
27 Oct [1861]	Miss Mary Turner / Edinburg [sic] / Miss	004*
12 Nov [1861]	Unknown	005
12 Dec [1861]	Capt. T. P. Chrisman / Commissary 24th Regiment Mississippi Vol / Camp Quitman Pensacola / Florida	006*
22 Apr [1862]	Capt. T. P. Chrisman / Co. "A" 36th Miss Regt / Rienzi Miss / Near Corinth	010
Type B -- black, PAID 10		
31 Jan [186-]	Miss Lizzie A Dulaney / Waterford / Loudon Co / Virginia	007*
-1 Jul [186-]	--rrell Esqr / --nd Assylum [sic] / Monticello / Miss [Printed address lined out].	008*
30 Nov [186-]	John Martin Esqr / Sheildsboro [sic] / Hancock Co / Miss	001*
Type Ba -- black, PAID 10 revalued 20 (ms)		
30 Dec [186-]	H T Cook Capt & a. q. m. / Brandon / Miss	002*
Type C -- black, DUE 5		
31 Jul [1862]	H. D. McGinnis Esq / Magnolia / Miss	011
Type D -- blue, DUE 10		
Illegible Date	[Ca]pt T. F. --- / [Knoxville] / Miss	003*

* Indicates a color image

Last Name Index Brookhaven, Mississippi, Stampless Covers

<u>Pmk Date</u>	<u>Typ</u>	<u>Last Name</u>	<u>Address</u>	<u>CN</u>
12 Nov [1861]	A	--	Unknown	005
Illegible Date	D	--	[Ca]pt T. F. --- / [Knoxville] / Miss	003*
12 Dec [1861]	A	Chrisman	Capt. T. P. Chrisman / Commissary 24th Regiment Mississippi Vol / Camp Quitman Pensacola / Florida	006*
22 Apr [1862]	A	Chrisman	Capt. T. P. Chrisman / Co. "A" 36th Miss Regt / Rienzi Miss / Near Corinth	010
30 Dec [186-]	Ba	Cook	H T Cook Capt & a. q. m. / Brandon / Miss	002*
31 Jan [186-]	B	Dulaney	Miss Lizzie A Dulaney / Waterford / Loudon Co / Virginia	007*
30 Nov [186-]	B	Martin	John Martin Esqr / Sheildsboro [sic] / Hancock Co / Miss	001*
31 Jul [1862]	C	McGinnis	H. D. McGinnis Esq / Magnolia / Miss	011
-1 Jul [186-]	B	--rell	--rrell Esqr / --nd Assylum [sic] /Monticello / Miss [Printed address lined out].	008*
19 Aug [1861]	X	Turner	Miss Mary Turner / Edinburg [sic] / Mississippi	009*
27 Oct [1861]	A	Turner	Miss Mary Turner / Edinburg [sic] / Miss	004*

* Indicates a color image

Full Census Brookhaven, Mississippi, Stampless Covers

Type X -- black, PAID + 5 (flag slopes upward)

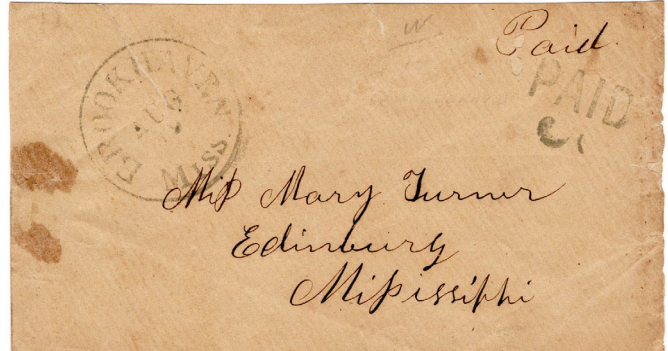
19 Aug [1861]

Pmk Black "BROOKHAVEN / MISS" (32 mm)

Notes None.

Add Miss Mary Turner / Edinburg [sic] / Mississippi

Image Courtesy Jim Montich [009]



Type A -- black, PAID + 5

27 Oct [1861]

Pmk Black "BROOKHAVEN / MISS" (32 mm)

Notes Patriotic flag envelope (CSA Type F11-11). Semi-official imprint of Camp of Instruction, Brookhaven, MS.

Add Miss Mary Turner / Edinburg [sic] / Miss

Image Courtesy Robert A Siegel Auctions [004]



12 Nov [1861]

Pmk "BROOKHAVEN / MISS" (32 mm)

Notes Patriotic flag envelope (CSA Type F11-5). Corner card of Fredonia Hards.

Add Unknown

Image Courtesy Robert A Siegel Auctions [005]



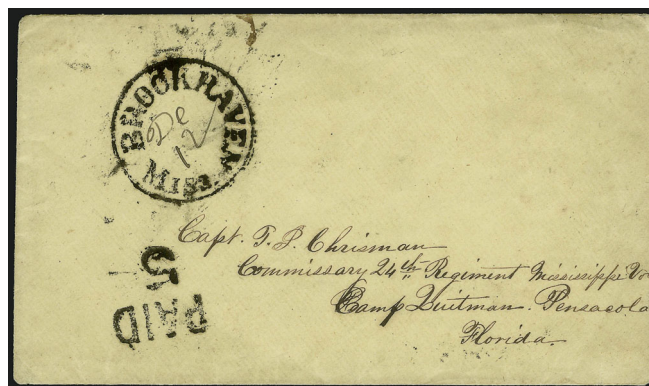
12 Dec [1861]

Pmk Black "BROOKHAVEN / MISS" (32 mm)

Notes None.

Add Capt. T. P. Chrisman / Commissary 24th
Regiment Mississippi Vol / Camp Quitman
Pensacola / Florida

Image Courtesy Robert A Siegel Auctions [006]



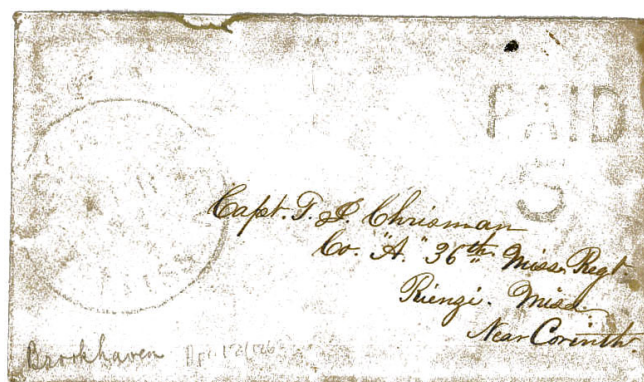
22 Apr [1862]

Pmk "BROOKHAVEN / MISS" (32 mm)

Notes None.

Add Capt. T. P. Chrisman / Co. "A" 36th Miss
Regt / Rienzi Miss / Near Corinth

Image Courtesy Robert A Siegel Auctions [010]



Type B -- black, PAID 10

31 Jan [186-]

Pmk Black "BROOKHAVEN / MISS" (32 mm)

Notes Patriotic flag envelope (CSA Type F11-5).

Add Miss Lizzie A Dulaney / Waterford / Loudon
Co / Virginia

Image Courtesy Robert A Siegel Auctions [007]



-1 Jul [186-]

Pmk Black "BROOKHAVEN / MISS" (32 mm)

Notes Turned cover.

Add --rrell Esqr / --nd Assylum [sic] /Monticello /
Miss [Printed address lined out].

Image Courtesy Schuyler Rumsey Auctions [008]



30 Nov [186-]

Pmk Black "BROOKHAVEN / MISS" (32 mm)

Notes None.

Add John Martin Esqr / Sheildsboro [sic] /
Hancock Co / Miss

Image Courtesy Don Garrett [001]



Type Ba -- black, PAID 10 revalued 20 (ms)

30 Dec [186-]

Pmk Black "BROOKHAVEN / MISS" (32 mm)

Notes Semi-official envelope of Mississippi
Assistant Quartermaster. Charge box: "Chg
Capt --" UR.

Add H T Cook Capt & a. q. m. / Brandon / Miss

Image Courtesy Schuyler Rumsey Auctions [002]



Type C -- black, DUE 5

31 Jul [1862]

Pmk Black "BROOKHAVEN / MISS" (32 mm)

Notes Date docket across left end.

Add H. D. McGinnis Esq / Magnolia / Miss

Image Private Collection [011]



Type D -- blue, DUE 10

Illegible Date

Pmk Black "BROOKHAVEN / MISS" (32 mm)

Notes Very faint Type D marking UL to UC. The images of the postmark and due marking across bottom are examples of the faint markings.

Add [Ca]pt T. F. --- / [Knoxville] / Miss

Image Courtesy Don Garrett [003]

