

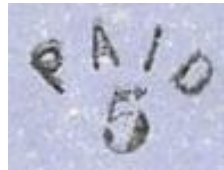
# Census of Hazle Hurst, Mississippi, Stampless Markings

Compiled by Francis J. Crown, Jr., Jim E. Montich, and Jerry S. Palazolo

## Markings



Type A



Type B

Hazle Hurst Stampless Markings (not to scale)

Manuscript markings are not illustrated. View them on the covers in the full census.

## Description and Count

Marking	Color	Type	Covers	Everett Count <sup>1</sup>
PAID (enclosed) [no rate]	Black	X	1	--
PAID (enclosed) + 5 (ms)	Black	A	2	2
PAID (enclosed) + 10 (ms)	Black	Aa	-- <sup>2</sup>	--
PAID (enclosed) + 5 (ms), revalued Due 5 (ms)	Black	Ab	1	--
PAID (enclosed), struck twice + 5 (ms)	Black	Ax	1	--
PAID (in arc) / 5	Black	B	1	--
Due 5 (ms)	--	Ms	-- <sup>2</sup>	NA

1. The Everett Count **is not always reliable**. For more information [click here](#).

2. This is a legacy listing in the 2012 CSA Catalog. No example was found while preparing this census.

**NOTE:** Every effort is made to ensure the accuracy of the census, but the inclusion of an item is not a guarantee of authenticity.

## **Notes**

### **Union Occupation During the Civil War**

Hazle Hurst was briefly occupied in late April 1863.

## Mini Census Hazle Hurst, Mississippi, Stampless Covers

<u>Pmk Date</u>	<u>Address</u>	<u>CN</u>
<b>Type X -- black, PAID (enclosed) [no rate]</b>		
20 Apr [1862]	Mr John T Hardie / New Orleans / La	007
<b>Type A -- black, PAID (enclosed) + 5 (ms)</b>		
12 Dec [1861]	Mess J. T. Hardie & Co / New Orleans / La	002*
10 Mar [1862]	Messer J. T. Hardie & Co / New Orleans / La	003*
<b>Type Ab -- black, PAID (enclosed) + 5 (ms), revalued Due 5 (ms)</b>		
19 Feb [1862]	Messer Carroll Hoy & Co / New Orleans / La	004
<b>Type Ax -- black, PAID (enclosed) struck twice + 5 (ms)</b>		
26 Aug [1861]	Rev Thomas R Markham / Fourth District / New Orleans / La	001*
<b>Type B -- black, PAID (in arc) / 5</b>		
14 Mar [1862]	Miss Sophie Jelks / Port Hudson / La	005*
10 Jun [1862]	Capt P. J. Chrisman / Co. "A" 36sth Miss. Regt. / Columbus, Miss	006

\* Indicates a color image

## Full Census Hazle Hurst, Mississippi, Stampless Covers

Type X -- black, PAID (enclosed) [no rate]

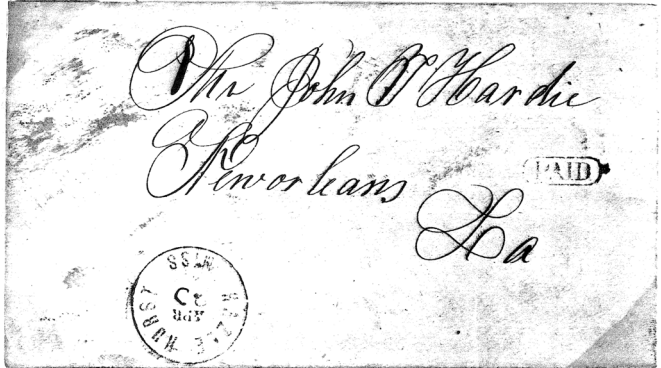
20 Apr [1862]

**Pmk:** "HAZLE HURST / MISS (25 mm)

**Notes:** None.

**Add:** Mr John T Hardie / New Orleans / La

**Image:** Courtesy Charles Miller [007]



Type A -- black, PAID (enclosed) + 5 (ms)

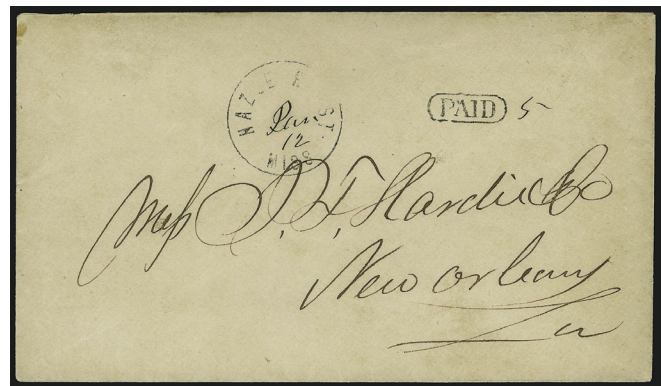
12 Dec [1861]

**Pmk:** Black "HAZLE HURST / MISS (25 mm)

**Notes:** None.

**Add:** Mess J. T. Hardie & Co / New Orleans / La

**Image:** Courtesy Robert A Siegel Auctions [002]



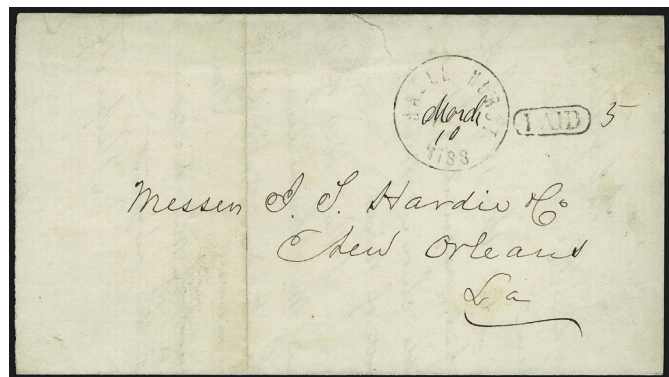
10 Mar [1862]

**Pmk:** Black "HAZLE HURST / MISS (25 mm)

**Notes:** None.

**Add:** Messer J. T. Hardie & Co / New Orleans / La

**Image:** Courtesy Robert A Siegel Auctions [003]



**Type Ab -- black, PAID (enclosed) + 5 (ms), revalued Due 5 (ms)**

**19 Feb [1862]**

**Pmk:** "HAZLE HURST / MISS (25 mm)

**Notes:** Patriotic flag envelope (CSA Type F10-16).

**Add:** Messer Carroll Hoy & Co / New Orleans / La

**Image:** Courtesy Robert A Siegel Auctions [004]



**Type Ax -- black, PAID (enclosed) struck twice + 5 (ms)**

**26 Aug [1861]**

**Pmk:** Black "HAZLE HURST / MISS (25 mm)

**Notes:** None.

**Add:** Rev Thomas R Markham / Fourth District / New Orleans / La

**Image:** Courtesy Don Garrett [001]



**Type B -- black, PAID (in arc) / 5**

**14 Mar [1862]**

**Pmk:** Black "HAZLE HURST / MISS" (YD - 31 mm)

**Notes:** "PAID / 5" marking added for overweight folded letter.

**Add:** Miss Sophie Jelks / Port Hudson / La

**Image:** Courtesy Schuyler Rumsey Auctions [005]



**10 Jun [1862]**

**Pmk:** "HAZLE HURST / MISS" (YD - 31 mm)

**Notes:** None.

**Add:** Capt P. J. Chrisman / Co. "A" 36th Miss.  
Regt. / Columbus, Miss

**Image:** Courtesy Robert A Siegel Auctions [006]

