

Census of Horn Lake, Mississippi, Stampless Markings

Compiled by Francis J. Crown, Jr., Jim E. Montich, and Jerry S. Palazolo

Markings



Type A



Type B

Horn Lake Stampless Markings (not to scale)

Manuscript markings are not illustrated. View them on the covers in the full census.

Description and Count

Marking	Color	Type	Covers	Everett Count*
PAID + 5 (ms)	Black	A	2	1
PAID + 5 (blue ms)	Black	Ax	1	--
PAID + 10 (ms)	Black	Aa	2	2
PAID + 5	Black	B	4	5
Due 5 / 10 (ms)	--	Msx	1	NA

* The Everett Count is **not always accurate**. For more information [click here](#).

Stampless Paid 5c Uses in June 1861: The last use of a stampless Paid 5c marking in this census is 3 April 1862. Therefore, any Paid 5c use in June is assumed to be 1861.

NOTE: Every effort is made to ensure the accuracy of the census, but the inclusion of an item is not a guarantee of authenticity.

Notes

Civil War Occupation

Horn Lake was not occupied in the Civil War. However, it was in an area that saw frequent raids and skirmishes.

Mini Census Horn Lake, Mississippi, Stampless Covers

<u>Pmk Date</u>	<u>Address</u>	<u>CN</u>
Type A -- black, PAID + 5 (ms)		
23 Jun [1861]	Capt E Nelms / Company B. 1st Mississippi Reg / Warrington / Florida	010*
3 Apr [1862]	Mrs Henrietta Harrell / Selma / Ark	004*
Type Ax -- black, PAID + 5 (blue ms)		
31 Oct [1861]	Mr George M. Tate / 9th Miss -- Regiment / Warrington, Florida	003*
Type Aa -- black, PAID + 10 (ms)		
13 Dec [186-]	Mrs Sarah E Davis / Montgomery / Texas	001*
8 Oct [186-]	A N Davis Esqr / Montgomery / Texas	005*
Type B -- black, PAID + 5		
16 Jul [1861]	Mr. George M. Tate / 9th Regiment Miss Volunteers / Warrington, Florida	006*
7 Oct [1861]	Capt E. Nelms / 9th Regiment Mississippi Troops / Warrington / Florida	007*
21 Oct [1861]	Mr George	008
Illegible Date	Miss Kate Holmes / Bellevue / Talbot Co / Georgia	002*
Type Msx -- Due 5 / 10 (ms)		
22 Jan [1862]	Mrs Henrietta Harrell / Horn Lake [LO] / Desoto County [LO] / Miss [LO] / Selma / Ark	009*

* Indicates a color image

Last Name Index Horn Lake, Mississippi, Stampless Covers

<u>Pmk Date</u>	<u>Typ</u>	<u>Last Name</u>	<u>Address</u>	<u>CN</u>
21 Oct [1861]	B		Mr George	008
8 Oct [186-]	Aa	David	A N Davis Esqr / Montgomery / Texas	005*
13 Dec [186-]	Aa	Davis	Mrs Sarah E Davis / Montgomery / Texas	001*
22 Jan [1862]	Msx	Harrell	Mrs Henrietta Harrell / Horn Lake [LO] / Desoto County [LO] / Miss [LO] / Selma / Ark	009*
3 Apr [1862]	A	Harrell	Mrs Henrietta Harrell / Selma / Ark	004*
Illegible Date	B	Holmes	Miss Kate Holmes / Bellevue / Talbot Co / Georgia	002*
23 Jun [1861]	A	Nelms	Capt E Nelms / Company B. 1st Mississippi Reg / Warrington / Florida	010*
7 Oct [1861]	B	Nelms	Capt E. Nelms / 9th Regiment Mississippi Troops / Warrington / Florida	007*
16 Jul [1861]	B	Tate	Mr. George M. Tate / 9th Regiment Miss Volunteers / Warrington, Florida	006*
31 Oct [1861]	Ax	Tate	Mr George M. Tate / 9th Miss -- Regiment / Warrington, Florida	003*

* Indicates a color image

Full Census Horn Lake, Mississippi, Stampless Covers

Type A -- black, PAID + 5 (ms)

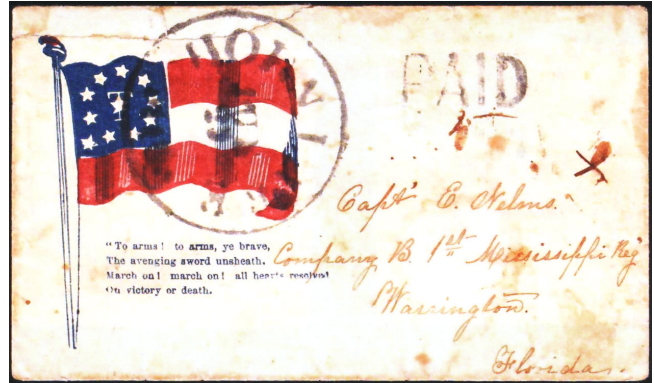
23 Jun [1861]

Pmk: Black "HORN LAKE / MISS" (36 mm)

Notes: Patriotic flag envelope (CSA Type F11-8).

Add: Capt E Nelms / Company B. 1st Mississippi
Reg / Warrington / Florida

Image: Courtesy David Feldman USA Auctions [010]



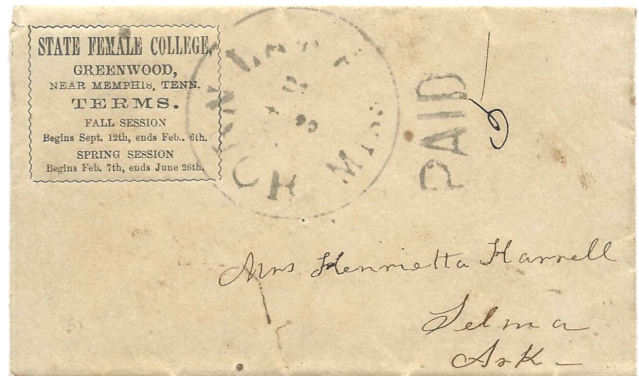
3 Apr [1862]

Pmk: Black "HORN LAKE / MISS" (36 mm)

Notes: Corner card of State Female College, Greenwood, TN.

Add: Mrs Henrietta Harrell / Selma / Ark

Image: Courtesy Jerry Palazolo [004]



Type Ax -- black, PAID + 5 (blue ms)

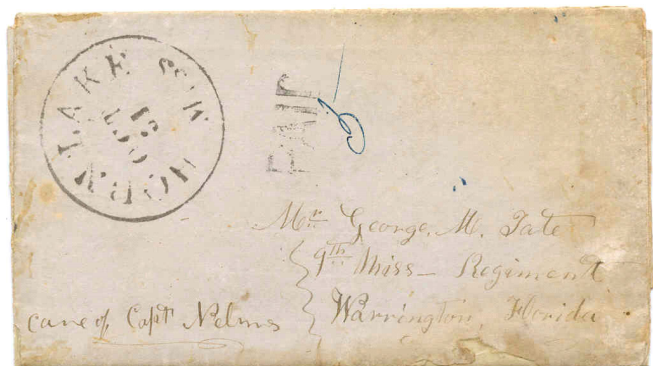
31 Oct [1861]

Pmk: Black "HORN LAKE / MISS" (36 mm)

Notes: None.

Add: Mr George M. Tate / 9th Miss -- Regiment /
Warrington, Florida

Image: Courtesy Civil War Philatelic Authentication
Service [003]



Type Aa -- black, PAID + 10 (ms)

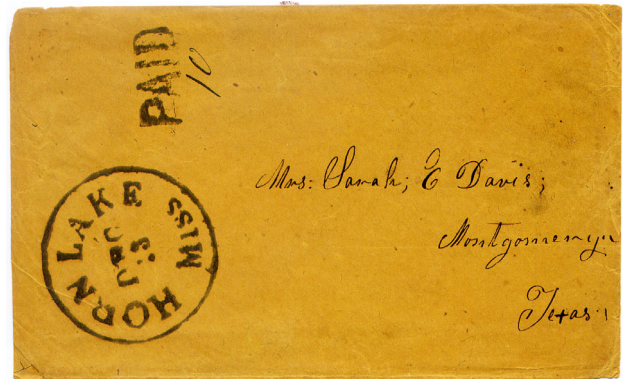
13 Dec [186-]

Pmk: Black "HORN LAKE / MISS" (36 mm)

Notes: None.

Add: Mrs Sarah E Davis / Montgomery / Texas

Image: Courtesy Don Garrett [001]



8 Oct [186-]

Pmk: Black "HORN LAKE / MISS" (36 mm)

Notes: US 3c Nesbitt postal stationery envelope.

Add: A N Davis Esqr / Montgomery / Texas

Image: Courtesy Robert A Siegel Auctions [005]



Type B -- black, PAID + 5

16 Jul [1861]

Pmk: Black "HORN LAKE / MISS" (36 mm)

Notes: Jefferson Davis medallion patriotic envelope (CSA Type JD-1B).

Add: Mr. George M. Tate / 9th Regiment Miss Volunteers / Warrington, Florida

Image: Courtesy Robert A Siegel Auctions [006]



7 Oct [1861]

Pmk: Black "HORN LAKE / MISS" (36 mm)

Notes: Jefferson Davis medallion patriotic envelope (CSA Type)

Add: Capt E. Nelms / 9th Regiment Mississippi Troops / Warrington / Florida

Image: Courtesy Jim Montich [007]



21 Oct [1861]

Pmk: HORN LAKE / MISS (36 mm)

Notes: Partial image of full cover.

Add: Mr George

Image: Courtesy Robert A Siegel Auctions [008]



Illegible Date

Pmk: Black "HORN LAKE / MISS" (36 mm)

Notes: None.

Add: Miss Kate Holmes / Bellevue / Talbot Co / Georgia

Image: Courtesy Don Garrett [002]



Type Msx -- Due 5 / 10 (ms)

22 Jan [1862]

Pmk: Black "HORN LAKE / MISS" (36 mm)

Notes: Cover forwarded from Horn Lake to Selma, AR.

Add: Mrs Henrietta Harrell / Horn Lake [LO] / Desoto County [LO] / Miss [LO] / Selma / Ark

Image: Courtesy Civil War Philatelic Authentication Service [009]

