

Census of Liberty, Mississippi, Stampless Markings

Compiled by Francis J. Crown, Jr., Jim E. Montich, and Jerry S. Palazolo

Markings

Only handstamped markings are illustrated. Manuscript markings can be viewed in the full census.

Description and Count

Marking	Color	Type	Covers	Everett Count ¹
Paid 5c (ms)	--	Ms	1	NA
Paid 10 cts (ms)	--	Msa	1	NA
Due 2c (ms)	--	Msb	-- ²	NA

1. The Everett Count **is not always accurate**. For more information [click here](#).
2. No example of this marking was found while preparing this census.

NOTE: Every effort is made to ensure the accuracy of the census, but the inclusion of an item is not a guarantee of authenticity.

Full Census Liberty, Mississippi, Stampless Covers

Type Ms -- Paid 5c (ms)

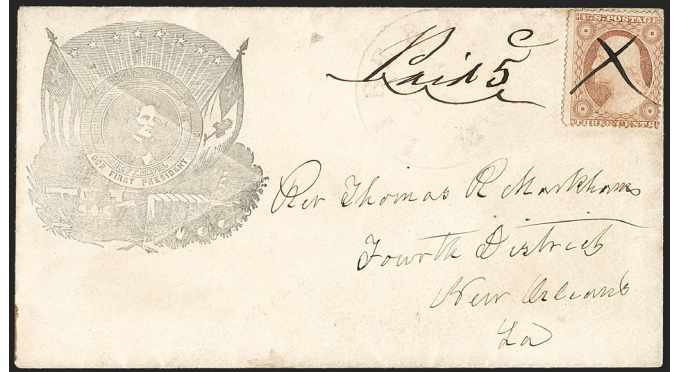
1 Jun [1861]

Pmk Black "LIBERTY / Miss."

Notes Jefferson Davis medallion patriotic envelope (CSA Type JD-4).

Add Rev Thomas R Markham / Fourth District / New Orleans / La

Image Courtesy Robert A Siegel Auctions [002]



Type Msa -- Paid 10 cts (ms)

Illegible Date

Pmk Black "LIBERTY / Miss."

Notes None.

Add Mr T R Markham / Vicksburg / Miss

Image Courtesy Jerry Palazolo [001]

