

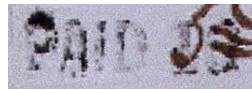
Census of Louisville, Mississippi, Stampless Markings

Compiled by Francis J. Crown, Jr., Jim E. Montich, and Jerry S. Palazolo

Markings



Type A



Type X

Louisville Stampless Markings (not to scale)

Manuscript markings are not illustrated. View them on the covers in the full census.

Description and Count

Marking	Color	Type	Covers	Everett Count ¹
PAID 5	Black	A	2	2
PAID 10	Black	X	-- ²	--
PAID 10m revalued 5 (ms)	Black	Xa	1	--

1. The Everett Count **is not always reliable**. For more information [click here](#).

2. No example of this marking was found while preparing this census.

Stampless Paid 5c Uses in June 1861: The last use of a stampless Paid 5c marking in this census is 11 February 1862. Therefore, any Paid 5c use in June is assumed to be 1861.

NOTE: Every effort is made to ensure the accuracy of the census, but the inclusion of an item is not a guarantee of authenticity.

Full Census Louisville, Mississippi, Stampless Covers

Type A -- black, PAID 5

25 Nov [1861]

Pmk: Black "LOUISVILLE / MISS" (YD - 32 mm)

Notes: Postmark struck twice. Usual Carroll Hoy filing pinholes.

Add: Messrs Carroll Hoy & Co / New Orleans / La

Image: Courtesy Robert A Siegel Auctions [003]



11 Feb [1862]

Pmk: Black "LOUISVILLE / Mi" (33 mm)

Notes: Typical Carroll Hoy filing pinholes.

Add: Mess Carroll Hoy & Co / New Orleans / La

Image: Courtesy Don Garrett [001]



Type Xa -- black, PAID 10, revalued 5 (ms)

13 Sep 1861

Pmk: Black "LOUISVILLE / MISS" (YD - 32 mm)

Notes: Folded letter.

Add: Hon John J Pettus / Jackson / Mississippi

Image: Courtesy Don Garrett [002]

