

# Census of Mississippi City, Mississippi, Stampless Markings

Compiled by Francis J. Crown, Jr., Jim E. Montich, and Jerry S. Palazolo

## Markings



Type A

### Mississippi City Stampless Markings (not to scale)

Manuscript markings are not illustrated. View them on the covers in the full census.

## Description and Count

Marking	Color	Type	Covers	Everett Count <sup>1</sup>
PAID + 5 (in circle)	Black	A	4	2
5 (in circle) [due no rate]	Black	Aa	-- <sup>2</sup>	--

1. The Everett Count **is not always reliable**. For more information [click here](#).

2. No example of this marking was found while preparing this census.

**NOTE:** Every effort is made to ensure the accuracy of the census, but the inclusion of an item is not a guarantee of authenticity.

## Full Census Mississippi City, Mississippi, Stampless Covers

### Type A -- black, PAID + 5 (in circle)

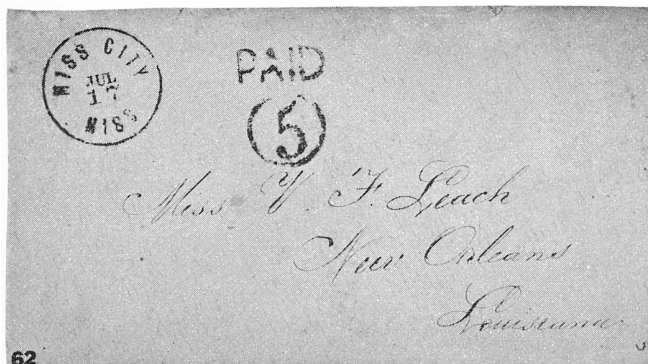
17 Jul [1861]

**Pmk:** "MISS CITY / MISS" (25 mm)

**Notes:** None.

**Add:** Miss V. F. Leach / New Orleans / Louisiana

**Image:** Private Collection [002]



29 Jul [1861]

**Pmk:** Black "MISS CITY / MISS" (25 mm)

**Notes:** None.

**Add:** Miss J R Drake / Church Hill / Miss

**Image:** Courtesy Don Garrett [003]



5 Aug [1861]

**Pmk:** "MISS CITY / MISS" (25 mm)

**Notes:** None.

**Add:** Mrs S P H Drake / Church Hill / Miss

**Image:** Courtesy Robert A Siegel Auctions [004]



**2 Sep [1861]**

**Pmk:** Black "MISS CITY / MISS" (25 mm)

**Notes:** None.

**Add:** Miss J. R. Drake / Church Hill / Miss

**Image:** Courtesy Robert A Siegel Auctions [001]

