

Census of Poplar Creek, Mississippi, Stampless Markings

Compiled by Francis J. Crown, Jr., Jim E. Montich, and Jerry S. Palazolo

Markings

Manuscript markings are not illustrated. View them on the covers in the full census.

Description and Count

Marking	Color	Type	Covers	Everett Count*
Paid 10 ct (ms)	--	Ms	2	NA

* The Everett Count **is not always accurate**. For more information [click here](#).

NOTE: Every effort is made to ensure the accuracy of the census, but the inclusion of an item is not a guarantee of authenticity.

Full Census Poplar Creek, Mississippi, Stampless Covers

Type Msa -- Paid 10 ct (ms)

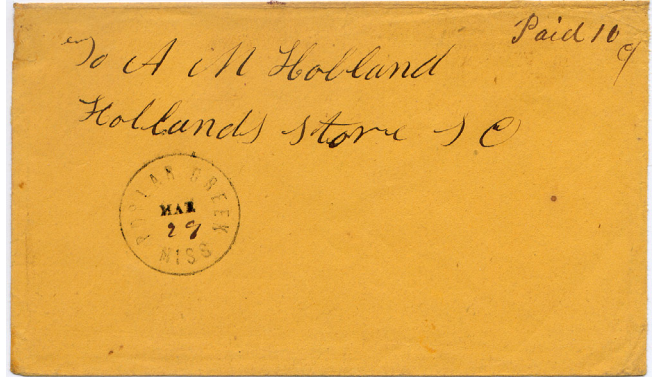
29 Mar [186-]

Pmk: Black "POPLAR CREEK / MISS" (26 mm)

Notes: None.

Add: To A M Hobland [sic] / Hollands Store, S C

Image: Courtesy Don Garrett [001]



18 Sep [186-]

Pmk: "POPLAR CREEK / MISS" (26 mm)

Notes: None.

Add: To Mr A B Hollan [sic] / Hollans [Hollands]
Store Post / Anderson District / South
Carolina

Image: Courtesy Robert A Siegel Auctions [002]

