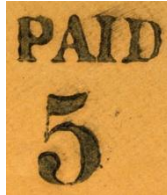


Census of Rodney, Mississippi, Stampless Markings

Compiled by Francis J. Crown, Jr., Jim E. Montich, and Jerry S. Palazolo

Markings



Type A

Rodney Stampless Markings (not to scale)

Manuscript markings are not illustrated. View them on the covers in the full census.

Description and Count

Marking	Color	Type	Covers	Everett Count*
PAID + 5	Black	A	3	3

* The Everett Count **is not always reliable**. For more information [click here](#).

NOTE: Every effort is made to ensure the accuracy of the census, but the inclusion of an item is not a guarantee of authenticity.

Full Census Rodney, Mississippi, Stampless Covers

Type A -- black, PAID + 5

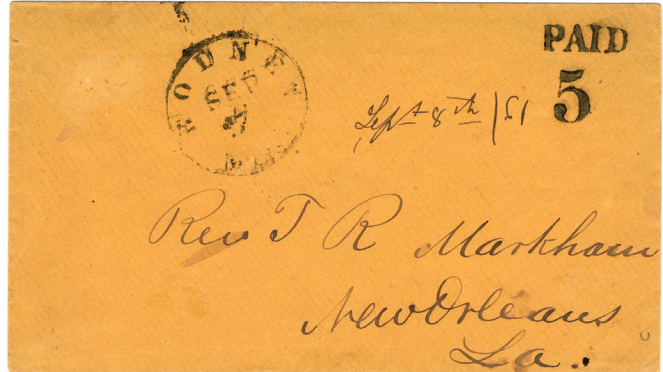
7 Sep [1861]

Pmk: Black "RODNEY / Miss." (32 mm)

Notes: None.

Add: Rev T R Markham / New Orleans / La

Image: Courtesy Jim Montich [002]



5 Jan [1862]

Pmk: Black "RODNEY / Miss." (32 mm)

Notes: Folded letter.

Add: Col. French / Chief of Ordnance / Jackson / Miss

Image: Courtesy Jerry Palazolo [001]



13 Jan [1862]

Pmk: Black "RODNEY / Miss." (32 mm)

Notes: Receiving postmark of New Orleans.

Add: Rev T R Markham / 4th District, New Orleans / La

Image: Courtesy Don Garrett [003]

