

Census of Sardis, Mississippi, Stampless Markings

Compiled by Francis J. Crown, Jr., Jim E. Montich, and Jerry S. Palazolo

Markings

Manuscript markings are not illustrated. View them on the covers in the full census.

Description and Count

Marking	Color	Type	Covers	Everett Count*
Paid (ms) [no rate]	--	Ms	-- ²	NA
Paid 5 (ms)	--	Msa	1	NA
Paid 10 (ms)	--	Msb	1	NA
Due 10 (ms)	--	Msc	1	NA

1. The Everett Count **is not always reliable**. For more information [click here](#).
2. This is a legacy listing in the 2012 CSA Catalog. No example was found while preparing this census.

NOTE: Every effort is made to ensure the accuracy of the census, but the inclusion of an item is not a guarantee of authenticity.

Note

Union Occupation During Civil War

Sardis was occupied in late 1862 through the summer of 1863 as part of General Grant's campaign against Vicksburg.

Full Census Sardis, Mississippi, Stampless Covers

Type Msa -- Paid 5 (ms)

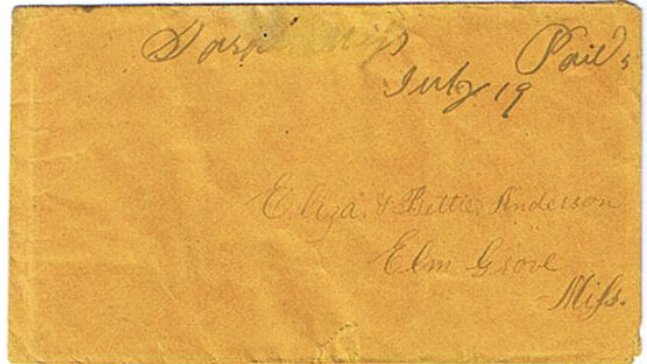
19 Jul [1861]

Pmk: "Sardis Miss (ms)

Notes: None.

Add: Eliza & Bettie Anderson / Elm Grove / Miss

Image: Private Collection [001]



Type Msb -- Paid 10 (ms)

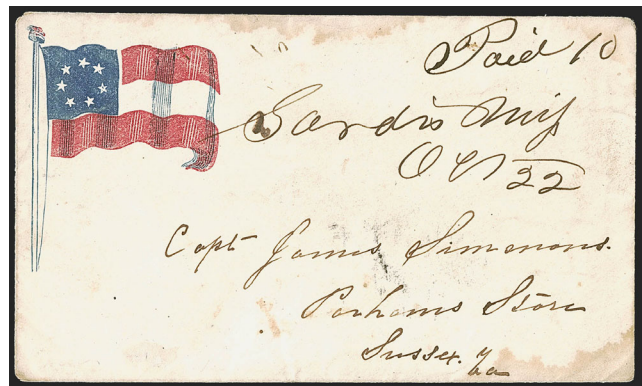
22 Oct [186-]

Pmk: "Sardis Miss (ms)

Notes: Patriotic flag envelope (CSA Type F7-5c).

Add: Capt James Simonons [sic] / Parhams Store / Va

Image: Courtesy Robert A Siegel Auctions [002]



Type Msc -- Due 10 (ms)

14 Jan [186-]

Pmk: "Sardis Miss (ms)

Notes: "DUE" marking of unknown origin.

Add: Illegible

Image: Private Collection [003]

