

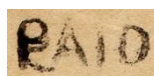
Census of Summit, Mississippi, Stampless Markings

Compiled by Francis J. Crown, Jr., Jim E. Montich, and Jerry S. Palazolo

Markings



Type A



Type B

Summit Stampless Markings (not to scale)

Manuscript markings are not illustrated. View them on the covers in the full census.

Description and Count

	Marking	Color	Type	Covers	Everett Count ¹
After Secession					
	PAID + 9 (ms)	--	Ay	1	--
Confederate					
	PAID [no rate]	Black	A	2	--
	PAID + 5 (ms)	Black	Ax	1	--
	PAID + 5	Black	B	1	1
	due 5 (ms)	--	Ms	-- ²	NA
	due 10 (ms)	--	Msx	1	NA
	due 10c (ms)	--	Msa	1	NA

1. The Everett Count **is not always reliable**. For more information [click here](#).

2. No example of this marking was found while preparing this census.

NOTE: Every effort is made to ensure the accuracy of the census, but the inclusion of an item is not a guarantee of authenticity.

Notes

Type B Marking

Only one example of this marking was found in the preparation of census. An illustration of the marking is below left. Note the "5" is partially under the "P" of "PAID." The Dietz drawing of the marking is below right. It is not known if the drawing was made from the cover in this census or another example.



PAID 5

Mini Census Summit, Mississippi, Stampless Covers

<u>Pmk Date</u>	<u>Address</u>	<u>CN</u>
After Secession - Type Ay -- black, PAID + 9 (ms)		
No Date	To The Clerk / --- Superior Court / Lagrange / Troup County / Georgia	008
Type A -- black, PAID [no rate]		
No Date	J. J. Pettus Governor / Jackson / Miss	001*
No Date	Mr J P Ca-- / Corinth / Care of Capt Murphy / Summit Rifles / --	002
Type Ax -- black, PAID + 5 (ms)		
1 Jul [1861]	Mr Charles Colton / N. O / La.	003*
Type B -- black, PAID + 5		
No Date	O. J. E. Stuart Esqr / Jackson / Miss	004*
Type Max -- due 10 (ms)		
No Date	Maj. Gen. Mansfield Lovell / Columbia S. Carolina	005*
Type Msa -- due 10c (ms)		
No Date	Miss Fannie Leverich/ Care of W. E. Leverich / Berzelia / Georgia	006*
No Date	Miss Mary McLauria / Brookhaven / ---	007

* Indicates a color image

Full Census Summit, Mississippi, Stampless Covers

After Secession - Type Ay -- black, PAID + 9 (ms)

No Date

Pmk: "SUMMIT / MISS."

Notes: Docket on reverse: May 20th 1861.

Add: To The Clerk / --- Superior Court / Lagrange /
Troup County / Georgia

Image: Courtesy Robert A Siegel Auctions [008]



Type A -- black, PAID [no rate]

No Date

Pmk: Black "SUMMIT / MISS."

Notes: Folded letter.

Add: J. J. Pettus Governor / Jackson / Miss

Image: Courtesy Pete Dunn [001]



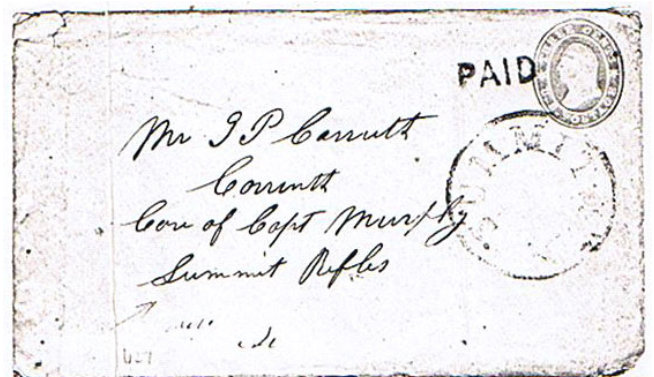
No Date

Pmk: "SUMMIT / MISS."

Notes: US 3c star die postal stationery.

Add: Mr J P Ca-- / Corinth / Care of Capt Murphy /
Summit Rifles / --

Image: Private Collection [002]



Type Ax -- black, PAID + 5 (ms)

1 Jul [1861]

Pmk: Black "SUMMIT / MISS."

Notes: None.

Add: Mr Charles Colton / N. O / La.

Image: Courtesy Robert A Siegel Auctions [003]



Type B -- black, PAID + 5

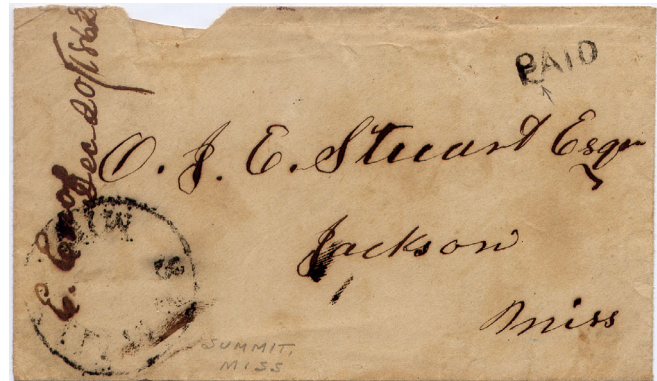
No Date

Pmk: Black "SUMMIT / MISS."

Notes: See "Notes."

Add: O. J. E. Stuart Esqr / Jackson / Miss

Image: Courtesy Don Garrett [004]



Type Max -- due 10 (ms)

No Date

Pmk: Black "SUMMIT / MISS."

Notes: Semi-official envelope of Executive Office, Shreveport, La.

Add: Maj. Gen. Mansfield Lovell / Columbia S. Carolina

Image: Courtesy Robert A Siegel Auctions [005]



Type Msa -- due 10c (ms)

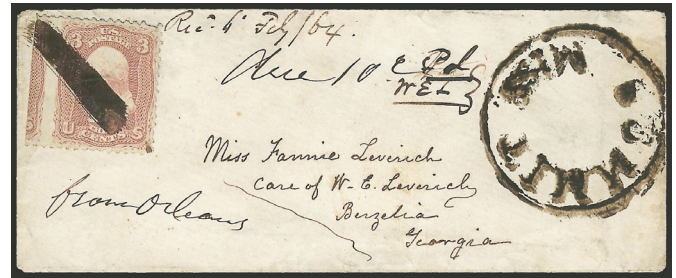
No Date

Pmk: Black "SUMMIT / MISS."

Notes: February 1864 docket UC. Cover apparently carried through the line out of New Orleans and deposited in Confederate mails at Summit.

Add: Miss Fannie Leverich/ Care of W. E. Leverich / Berzelia / Georgia

Image: Private Collection [006]



No Date

Pmk: "SUMMIT / MISS."

Notes: Image reduced at bottom.

Add: Miss Mary McLauria / Brookhaven / ---

Image: Private Collection [007]

